

**Primary Six
Science
Continual Assessment One**

Section A (30 x 2 marks)

For each question 1 to 30, four options are given. One of them is the correct answer. Make your choice (1,2,3 or 4). Write the correct answer in the box provided.

1. A group of organism of the same kind living and reproducing in a particular area is known as a/an _____.

- (1) habitat
- (2) community
- (3) population
- (4) environment

2. Algae, tiger barbs, guppies, tubiflex worms and elodea are usually found living in a/an _____.

- (1) sea
- (2) pond
- (3) ocean
- (4) swamp

3. We use the leaves of the _____ to wrap food.

- (1) water lily, lemon grass and pandan
- (2) lotus, coconut, and bamboo
- (3) water lettuce, pandan and lotus
- (4) banana, sugar cane and bamboo

4. Which part of the maize plant is used to make popcorns?

- (1) leaves
- (2) seeds
- (3) roots
- (4) stems

5. Which one of the following plants is usually found on the surface of a pond?

- (1) Hydrilla
- (2) Cabomba
- (3) Tape grass
- (4) Watermoss fern

6. When a swollen leaf stalk of a hyacinth plant is cut underwater, bubbles can be seen escaping to the surface of the water. These bubbles help the plant to _____.

- (1) float
- (2) respire
- (3) transpire
- (4) photosynthesis

7. The water boatman is able to move through the water because it has _____.

- (1) flippers
- (2) a tail fin
- (3) webbed feet
- (4) oar-like hind legs

8. Mrs Wong wants to grow a ginger plant quickly. Which method should she use?

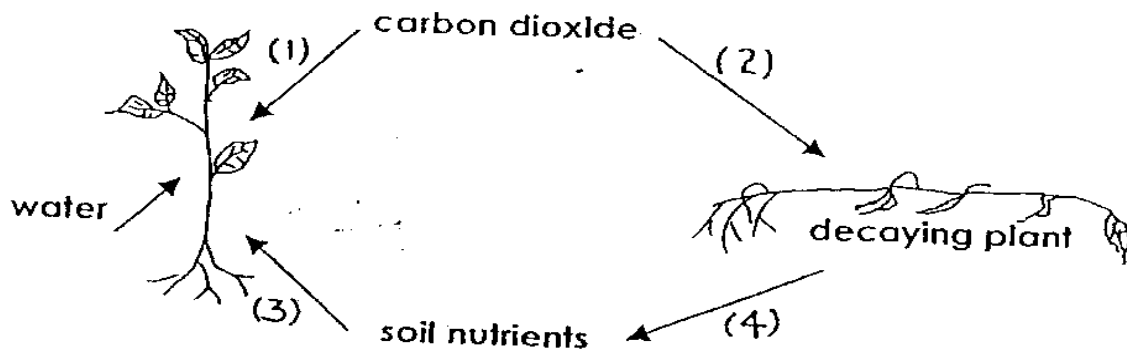
- (1) Plant a ginger root in a pot of soil
- (2) Plant some ginger seeds in a pot of soil
- (3) Plant a ginger leaf cutting in a pot of soil
- (4) Plant an underground ginger stem in a pot of soil

9. Which of the following groups is correctly classified?

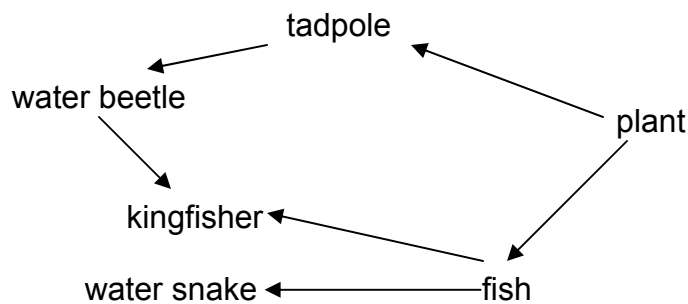
Dispersal of Seeds / Fruits

Group	By wind	By splitting	By animal	By water
(1)	Vernonia	Rubber	Mimosa	Clematis
(2)	Angsana	Saga	Tomato	Carapa
(3)	Shorea	Nipah	Guava	Lotus
(4)	Mahagony	Balsam	Coconut	Pongpong

10. The following diagram shows a cycle in a nature. Which one of the arrows is **incorrect**?

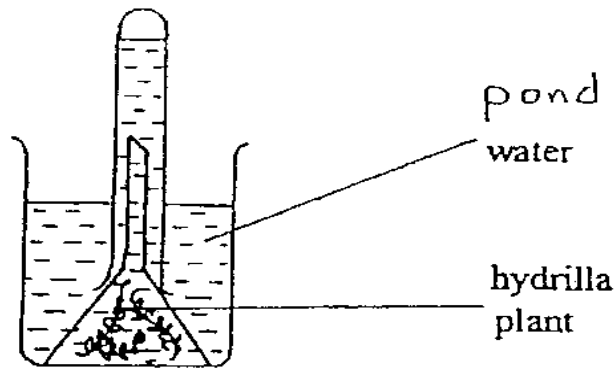


11. In the food web below, if all the kingfishes are removed, which one of the other populations might decrease?



- (1) fish
- (2) water beetle
- (3) tadpole
- (4) water snake.

12. Jack set up the experiment as shown below.



He measured the amount of oxygen collected at different periods during a fine day from dawn to dusk and recorded the results as shown in the table below. During which period was the intensity of light the strongest?

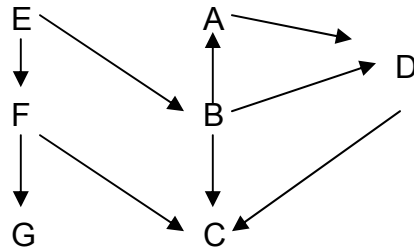
Periods	Amount of oxygen collected in cm^3
(1)	5
(2)	19
(3)	23
(4)	16

13. Mary wanted some tapioca flour to make cookies. She found four bags of white powder-like material on a shelf. She added a few drops of iodine solution to a spoonful of powder from each bag. She observed the following results.

Which bag of flour would most likely contain tapioca flour?

Bags of flour	Reaction of iodine
(1)	Turned slightly blue
(2)	Remained light brown
(3)	Remained light brown
(4)	Turned dark blue

14. Study the food web below.



Which of the organism A, B, C, D, E, F and G are both predator and prey?

- (1) A and D
- (2) B and C
- (3) E and F
- (4) F and G

15. Which one of the groups of animals below correctly shows a herbivore, a carnivore and an omnivore?

Group	Herbivore	Carnivore	Omnivore
(1)	Bee	Sparrow	Duck
(2)	Caterpillar	Dragonfly nymph	Cockroach
(3)	Zebra	Goat	Pigeon
(4)	Beetle lava	Guppy	Snakehead

16. Study the statements about decomposers below.

- Minah: They help to return nutrient to the soil.
- Alan: They require sunlight, air and water to grow.
- Jane: They break down dead organisms into simpler substances.
- John: They remove dead organisms from the environment.

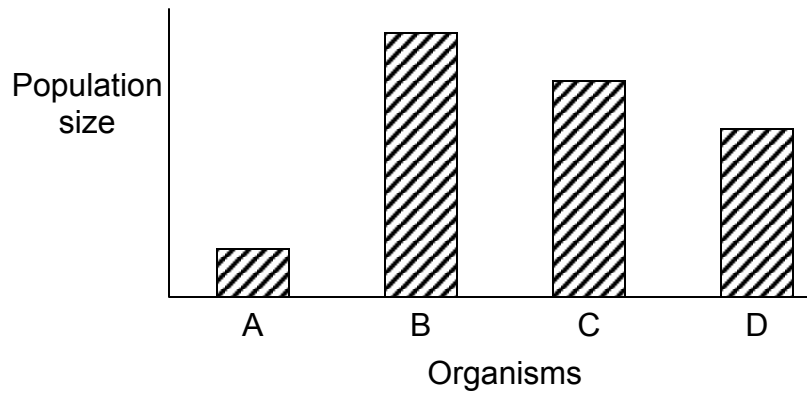
Who made the correct statement?

- (1) Alan only
- (2) Jane and Minah only
- (3) Minah and John only
- (4) Minah, Jane and John only

17. The leopards in a grassland will die if all the plants are destroyed because _____.

- (1) they are plant and animal eaters
- (2) they depend directly on plants for food
- (3) the plant-eaters will have no place to hide
- (4) the plant-eaters which they prey on will starve to death

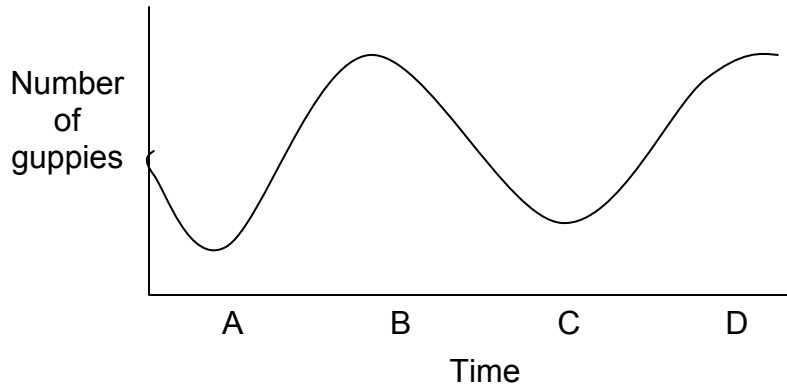
18.



Which of the following food chains is represented by the above graph?

- (1) B → C → D → A
- (2) A → D → C → B
- (3) C → B → A → D
- (4) D → A → C → B

19.



The graph above shows a number of guppies in an aquarium. A few angel fish were introduced and then taken out after a few days. When were the angel fish put in and taken out respectively?

- (1) A and B
- (2) A and D
- (3) B and C
- (4) C and D

20. Study the classification below.

Edible Plant Parts

Leaves

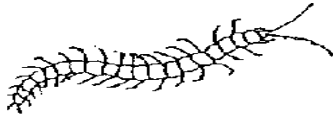
Roots

Stems

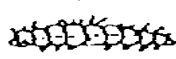
Which of the following groups represents edible leaves, roots and stems respectively?

	Leaves	Roots	Stems
(1)	Cabbage	Yam bean	Potato
(2)	Turnip	Water chestnut	Ginger
(3)	Spinach	Onion	Tapioca
(4)	Celery	Sweet potato	Lettuce

21. Which one of the following animals does not live together with all the others in the same habitat?



(1) Centipede



(2) Caterpillar



(3) Earthworm



(4) Millipede

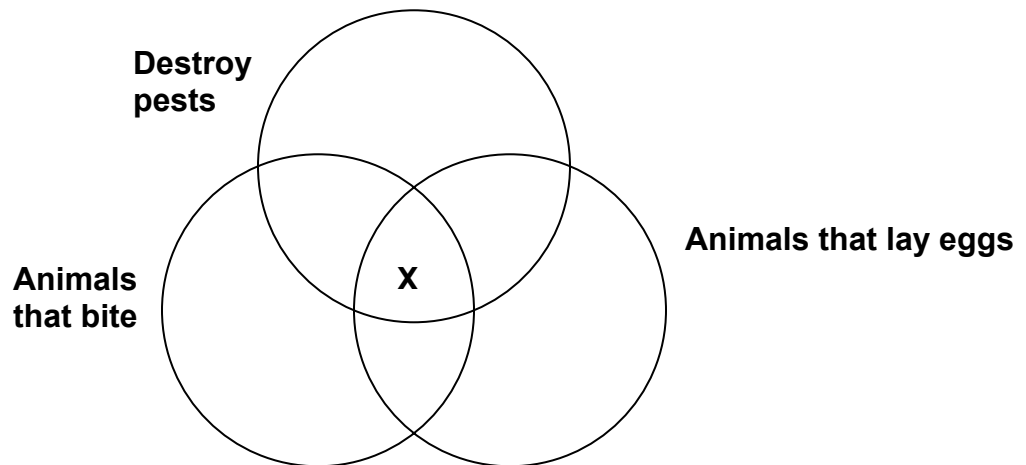
22. Which one of the following best illustrates an example of a population?

- (1) 6 bulls
- (2) 4 lions
- (3) 1 drone ant and 2 worker ants
- (4) 2 frogs and 3 tadpoles

23. The camel and goat are useful animals because they _____.

- (1) provide transport
- (2) have four legs
- (3) provide meat and milk
- (4) are herbivores

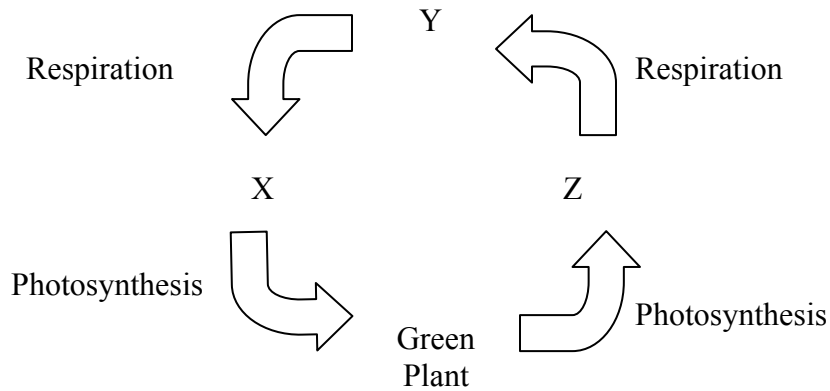
24. Study the Venn diagram below.



Which of the following animal is **X**?

- (1) Owl
- (2) Wasp
- (3) Hen
- (4) Python

25.



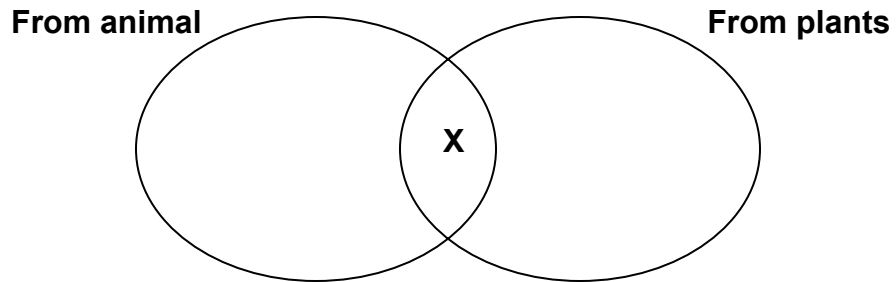
The diagram above shows the exchange of gases between living things. What do the letters X, Y and Z represent?

	X	Y	Z
(1)	Animal	Oxygen	Carbon dioxide
(2)	Oxygen	Carbon dioxide	Animal
(3)	Carbon dioxide	Animal	Oxygen
(4)	Animal	Carbon dioxide	Oxygen

26. Latex taken from the _____ of the rubber tree can be used to make _____.

- (1) branches ----- stools
- (2) trunks ----- tyres
- (3) roots ----- medicine
- (4) seeds ----- ornaments

27. Study the Venn diagram below.



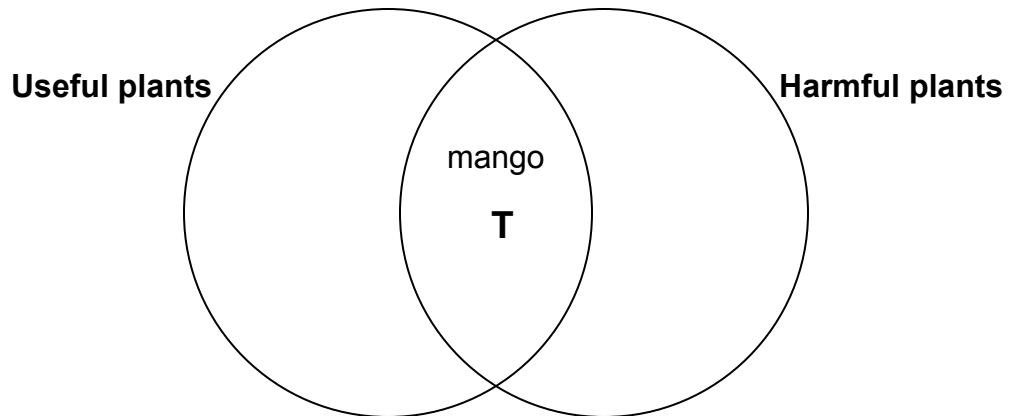
Which one of the following object does **X** best represent?

- (1) Sack
- (2) Hose
- (3) Thread
- (4) Leather bag

28. In the table below, which of the following plant is correctly matched with the useful materials it provides?

	Plant	Useful materials
(1)	Hemp	Mat and broom
(2)	Cotton	Cloth and rope
(3)	Rattan	Basket and shirt
(4)	Oil palm	Margarine and soap

29. Study the Venn diagram below carefully.



Which of the following is T likely to be?

- (1) Jute
- (2) Mushroom
- (3) Papaya
- (4) Rosewood

30. Which of the plants below have poisonous part or parts?

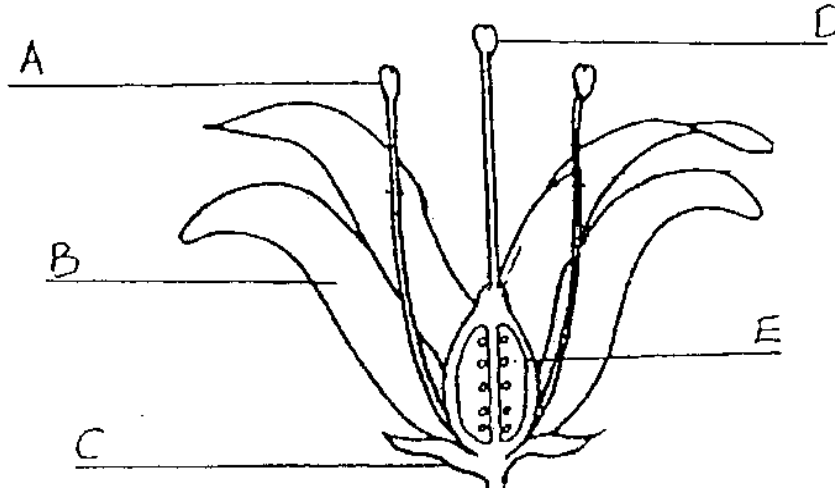
A. Lantana B. Mango C. Tapioca D. Balsam E. Tomato

- (1) A and B only
- (2) C and D only
- (3) A, B and C only
- (4) B, C, D and E only

Section B (40 marks)

Write your answers for each question 31 to 46 in the blank spaces provided.

31. Study the cross-section of the bisexual flower below.

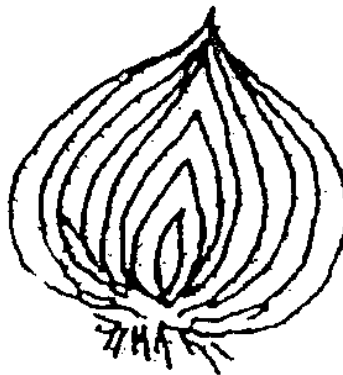


The letters A, B, C, D and E represent parts of the flower. Indicate with a letter A, B, C, D or E the part of the flower where:

a. pollen grains are found: Part (1m)

b. it will develop into a fruit after fertilization: Part (1m)

32. Look at this plant part.



a. Draw an arrow to identify a bud in the diagram (1m)

b. The bud will develop into a/an (1m)

33. Complete the classification table using the words given below. (3m)

Silverfish, Rats, Bedbug, Aphids, Rice weewils, Snakes

Harmful animals			
Garden Pest	Destroy Things	Transmit Diseases	Bite, sting and irritates

34. Put a tick (✓) in the correct column.

They breathe using their				
Animal	gills	skin	air tube	air bubbles
Tubiflex worms				
Gold fish				
Water stick insect				
Backswimmer				
Great diving beetle				
prawn				(3m)

35. State the difference between a field habitat and a seashore habitat. (2m)

Field habitat:

Seashore habitat:

36. Coleus needs water and other conditions to make food.

a. Name two other conditions necessary for this process to take place. (1m)

b. Name this process of making food by plants. (1m)

37

a. Why are garden snails, aphids and caterpillar considered garden pests?
(1m)

b. Why are termites not considered garden pests? (1m)

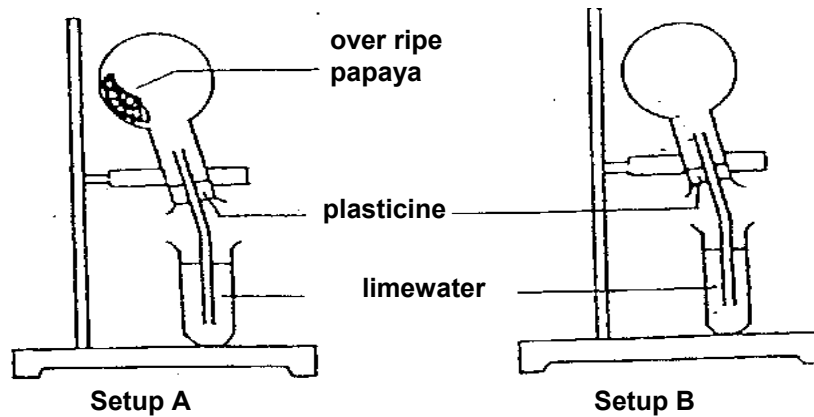
38.

Animals

Millipede	Dragonfly nymph	Praying Mantis
Woodlouse	Waterboatman	Garden snails
Centipede	Pondskater	Aphid

The above table shows that the animals are grouped according to their
(2m)

39. Sam set up an experiment as shown in the diagram below.



a. What was the aim of the experiment?

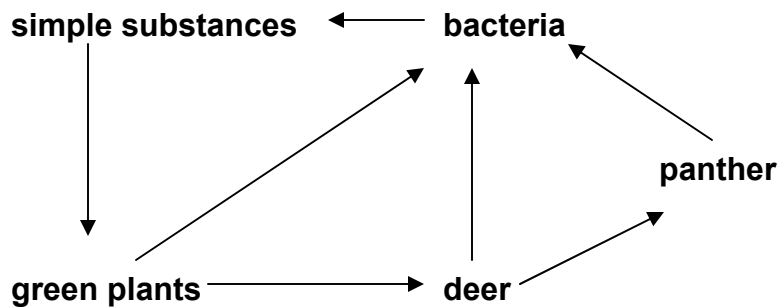
b. List 2 observations he made of the experiment after one week?

(i)

(ii)

c. What conclusion did he make at the end of the experiment? Why?

40.



a. How does the bacteria help in the above diagram? (2m)

b. What will happen to the population of deer if the population of panther decreases? (1m)

41. Water enters the roots of a plant through the root _____ and travel up the stem to the leaves. _____ from the atmosphere is absorbed through tiny openings called _____. The _____ in the leaves absorb energy from the sun which is used to combine carbon dioxide and water to make _____. (3m)

42. Both the elephant and the tractor are used to move logs in the forest. Give two reasons to explain why the elephant is sometimes better than the tractor for the job. (2m)

a. _____

b. _____

43. These animals are classified according to their usefulness.

Group A	Group B	Group C	Group D
Lizard Frog	Turkey Goose	Swordtail Hamster	Camel Buffalo

In which group would you place **horse**? Give a reason for your answer. (2m)

44. The head louse and the bed bug are both harmful to man. Give two reasons why they are considered harmful. (2m)

a. _____

b. _____

45

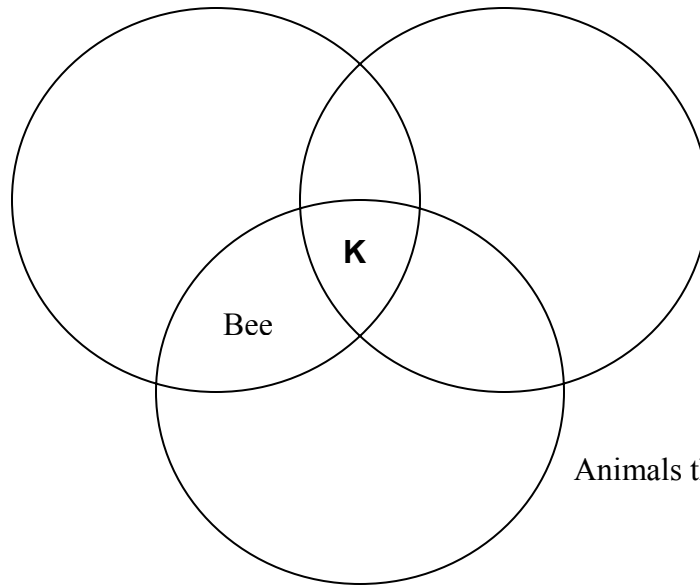
a. How are aphids harmful to plants? (1m)

b. How can aphids be got rid off without causing harm to the plant? (2m)

46.

Animals that
have wings

Animals that
spread diseases



Animals that have legs

a. From the diagram, what can you tell about the bee? (2m)

b. What is animal **K** likely to be? (1m)
