

CIA1

METHODIST GIRLS' SCHOOL

PRIMARY 5

SCIENCE

CONTINUAL ASSESSMENT 1

2004

Name: \_\_\_\_\_

Class: P5. \_\_\_\_\_

Date: \_\_\_\_\_

Marks: Section A (30 marks)

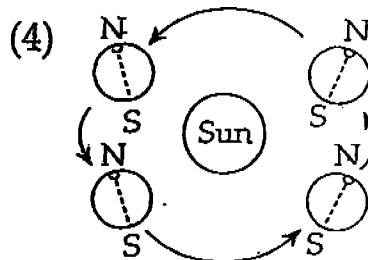
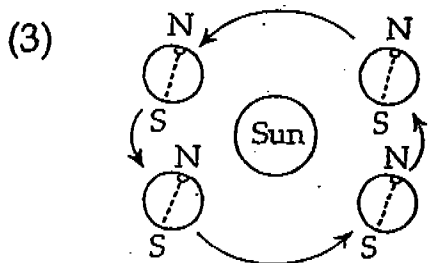
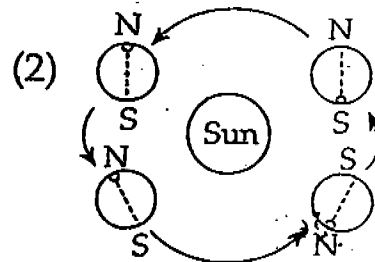
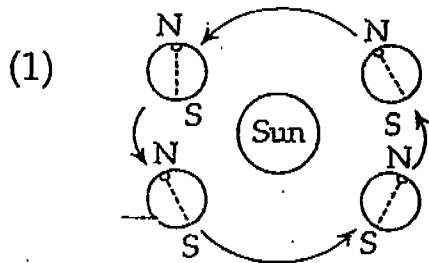
Section B (20 marks)

Total (50 marks)

**Section A (30 marks)**

**Choose the most suitable answer and write its number in the brackets provided.**

1. Which diagram shows correctly how the Earth revolves around the Sun?



( )

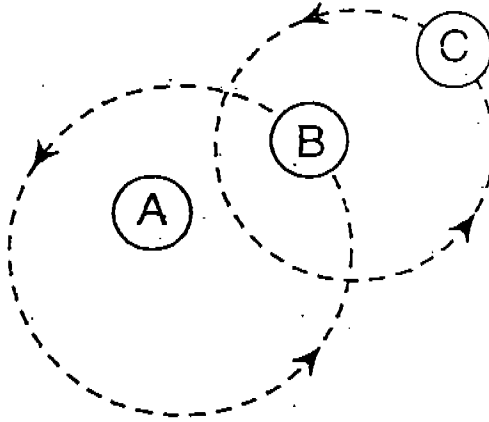
2. Which of the following statements are true about planets?

- A. They reflect light from the Sun.
- B. All planets have their own moon.
- C. They all revolve around the Sun.
- D. They take the same amount of time to make one rotation.

- (1) A and B only
- (2) A and C only
- (3) A, B and C only
- (4) A, C and D only

( )

3. In the diagram shown below, A, B and C represent three objects that are found in space, B revolves round A and C revolves round B.

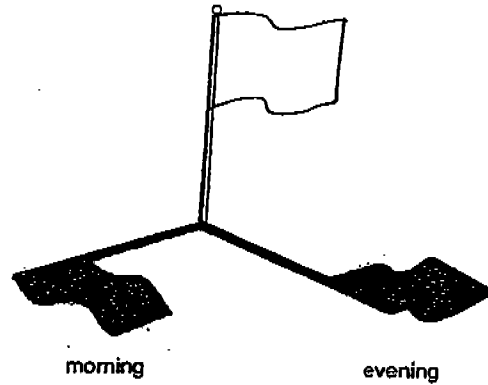


What can A, B and C be?

	A	B	C
(1)	Sun	Earth	Moon
(2)	Sun	Moon	Earth
(3)	Earth	Sun	Moon
(4)	Moon	Sun	Earth

( )

4. Emily observed the shadow of a flagpole and noticed that it is formed on one side of the flagpole in the morning, and on the other side in the evening.

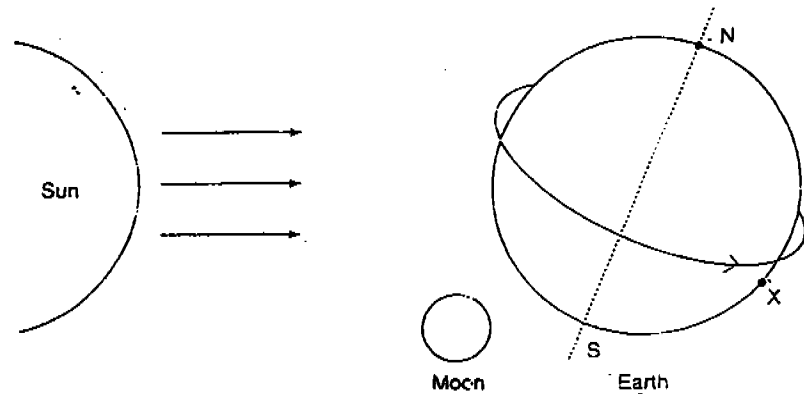


The change is a result of the \_\_\_\_\_.

- (1) rotation of the Moon
- (2) rotation of the Earth on its own axis
- (3) revolution of the Earth around the Sun
- (4) revolution of the Sun around the Earth

(     )

5. In the diagram below, Singapore is marked by the spot 'X' while the North Pole is marked 'N'.

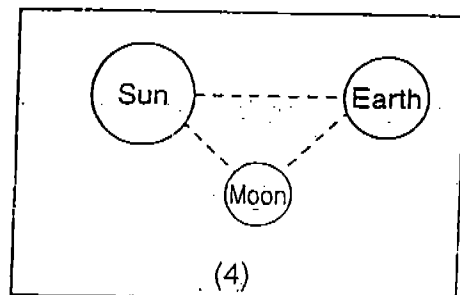
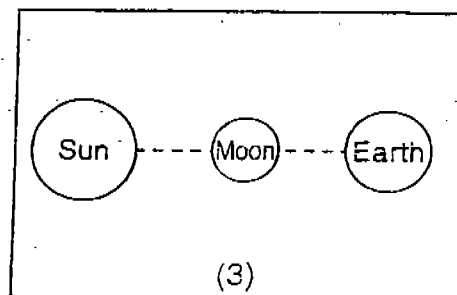
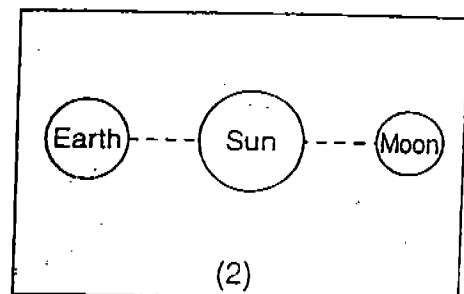
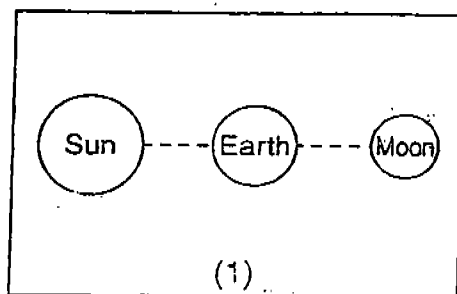


What are the Singaporeans and Eskimos experiencing?

	Singaporeans	Eskimos
(1)	Night	Day
(2)	Night	Night
(3)	Day	Night
(4)	Day	Day

( )

6. In which of the following arrangements will the Moon cast a shadow on the Earth?



5

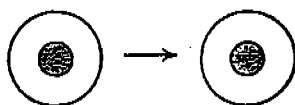
( )

7. Which one of the following has the correct arrangement starting from the largest. :

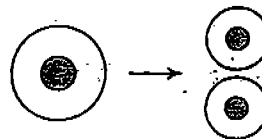
- (1) Earth, Sun, Moon, man-made satellite
- (2) Man-made satellite, Moon, Earth, Sun
- (3) Sun, Earth, Moon, man-made satellite
- (4) Moon, Sun, man-made satellite, Earth

( )

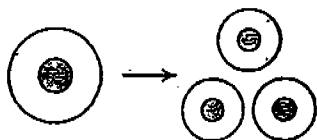
8. Which diagram shows correctly how a cell divides to form new cells?



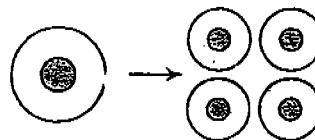
(1)



(2)



(3)



(4)

( )

9. Which cell part(s) does/do not perform the function described?

Cell part	Function
(A) Nucleus	Controls all the activities of the cell.
(B) Cell Wall	Prevents unwanted materials from entering.
(C) Cytoplasm	Contains cell parts and where new substances are formed.
(D) Chloroplast	Helps the cell to make food.

- (1) B only
- (2) B and C only
- (3) A, C and D only
- (4) All of the above

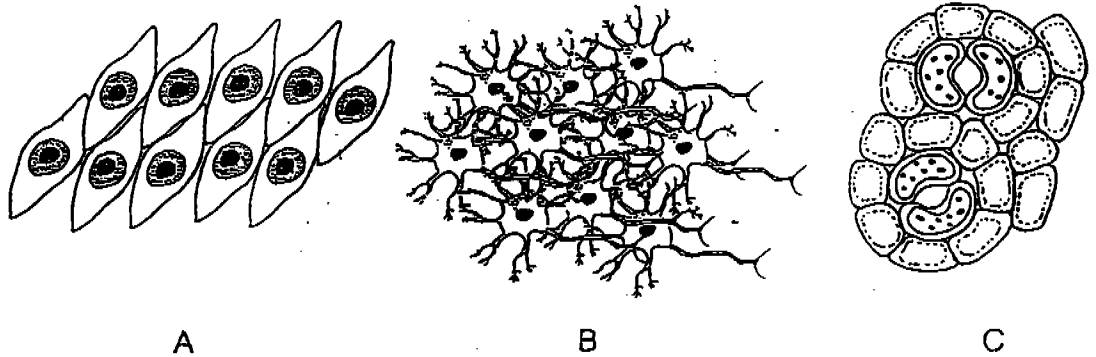
( )

10. Which of the following statements is true about cells?

- (1) All cells have the same life span.
- (2) Cells cannot repair injured parts of the body.
- (3) Cells increase in number by the process called cell contraction.
- (4) As we grow, our body increases in size due to the increase in the number of cells in the body.

( )

11.



The diagram above shows three different groups of cells. Which of these cells come from animals?

- (1) A only
- (2) C only
- (3) A and B only
- (4) All of the above

( )

12. Which of the following statements about cells is true?

- (1) An animal cell can make its own food.
- (2) A plant cell does not have a regular shape.
- (3) An animal cell does not consist of cell wall and chloroplast.
- (4) A plant cell does not consist of cell wall and cell membrane.

( )

13. The skeletal system in animals helps them to stand upright. Plants do not have skeletons, but they are able to stand upright because the

- (1) cell sap keeps the cell firm ( )
- (2) cellulose holds the cell together
- (3) cell wall allows substances to pass in and out of the cell
- (4) chloroplasts make food for the cell keeping them strong ( )

14. Which of the following are **not** found in a red blood cell?

- A. Cell wall
- B. Nucleus
- C. Cytoplasm
- D. Cell membrane

- (1) A and B only
- (2) A and D only
- (3) B and C only
- (4) B and D only

( )

15. Four students observed some cells on a slide using a microscope. Each pupil recorded the parts of the cells they could identify. The table below shows their recordings.

Name	Cell parts identified
Nikki	Cell membrane, nucleus
Tianna	Cytoplasm, cell membrane
Beatrice	Cytoplasm, nucleus, chloroplast
Eunice	Cell membrane, cytoplasm, nucleus

Whose recordings show that the cells are plants cells?

- (1) Nikki
- (2) Eunice
- (3) Tianna
- (4) Beatrice

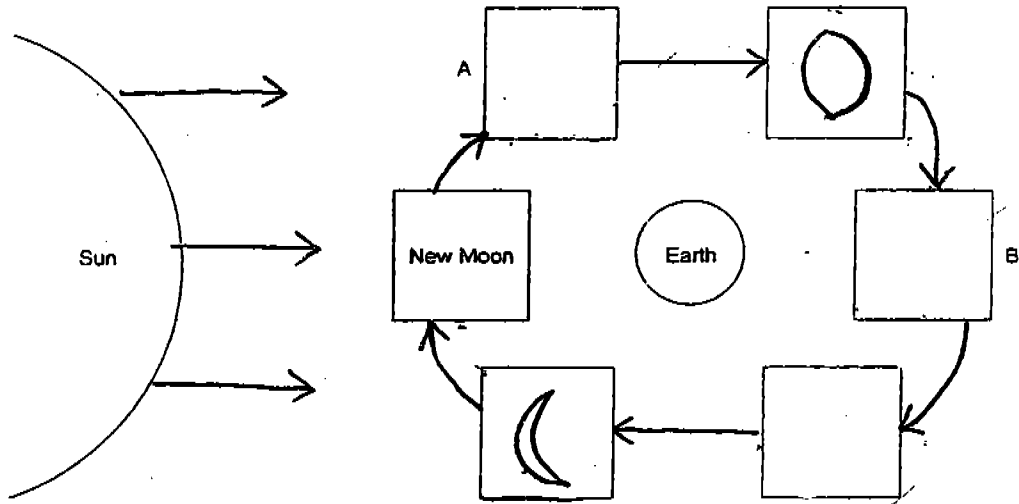
( )



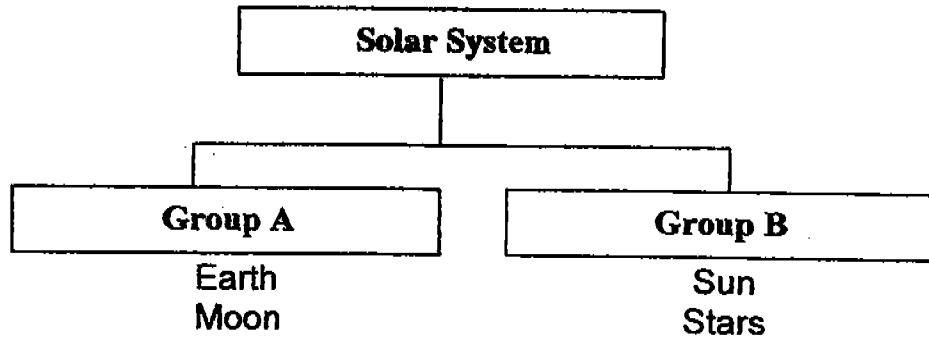
Section B (20 marks)

16. The diagram below shows the different shapes of the Moon as it revolves around the Earth.

(a) Draw the correct shape of the Moon in the empty boxes. (3 marks)



17. How are the objects in the classification table below grouped? (2 marks)



Group A: \_\_\_\_\_

Group B: \_\_\_\_\_

18. For 2-3 days every month, the moon is not visible. Why is this so?  
(2 marks)

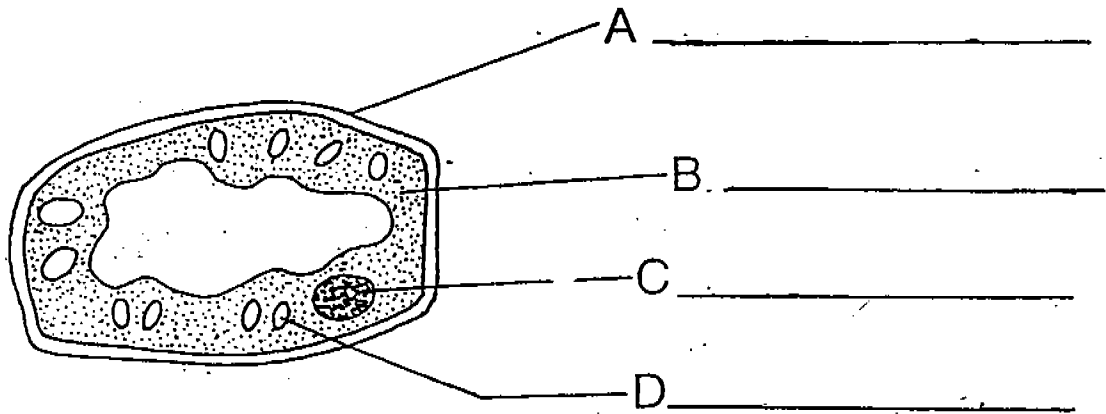
---

---

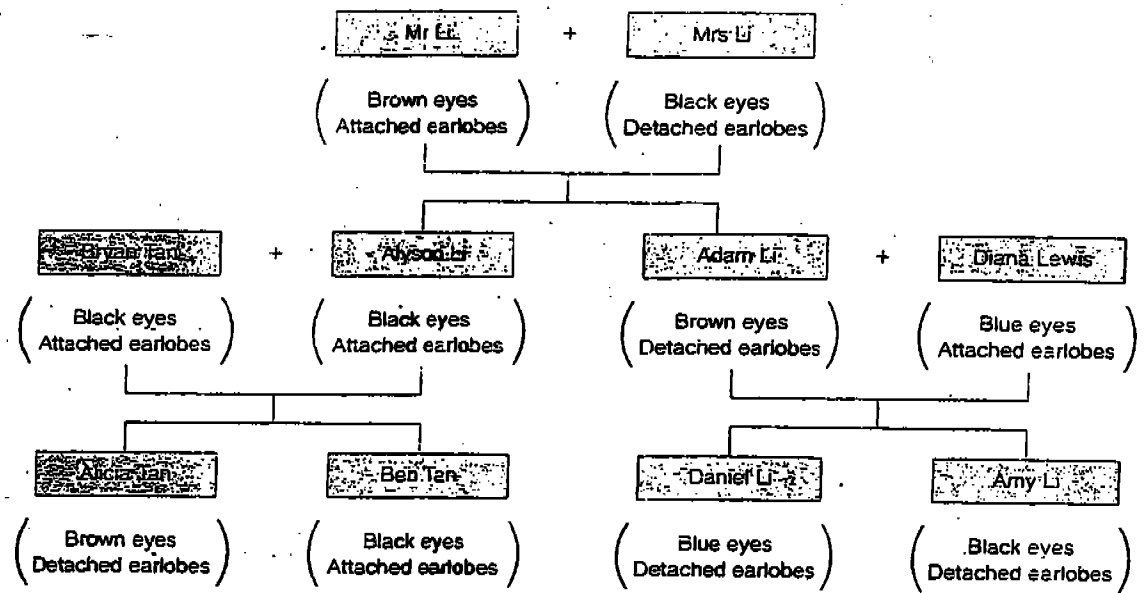
19. Fill in the blanks with the correct words. (5 marks)

Yeasts are microscopic \_\_\_\_\_ made up of only \_\_\_\_\_ cell. They can increase in number by \_\_\_\_\_. A \_\_\_\_\_ forms on the outer surface of a 'parent' cell. The \_\_\_\_\_ then doubles and divides.

20. The diagram below shows a plant cell. Label parts A to D. (2 marks)



Refer to the Li family tree below to answer questions 21 to 23.



21. Which characteristic did Amy Li inherit from her father? (1 mark)

\_\_\_\_\_

22. Why does Alicia Tan have brown eyes and detached earlobes although both her parents have black eyes and attached earlobes? (2 marks)

\_\_\_\_\_

\_\_\_\_\_

\_\_\_\_\_

23. In which part of the cell is the material responsible for these characteristics stored? (1 mark)

\_\_\_\_\_

24. The table below shows Mae's height from birth till she was 30 years old.

Age (years)	Height (cm)
0	30
3	55
6	104
7	115
10	135
12	141
15	156
18	164
21	167
25	167
30	167

(a) From the records, Mae concluded that her increase in height until the age of 21 was due to cell division. What else happened to the cells in her body that causes the increase? (1 mark)

(b) Mae lamented that cell division stopped when she reached the age of 21. Give a reason why this statement is wrong? (1 mark)

CAT

METHODIST GIRLS SCHOOL  
PRIMARY 5 SCIENCE  
2004 CONTINUAL ASSESSMENT 1

- 1) 3      16) D
- 2) 2
- 3) 1
- 4) 2
- 5) 2
- 6) 3      17) Group A : Reflect light  
Group B : Give off its own light.
- 7) 3
- 8) 2      18) This happens because there is a new moon in  
the sky and we cannot see the lighted part of  
the moon.
- 9) 1
- 10) 4      19) organisms
- 11) 3      one      budding
- 12) 3      bud
- 13) 2      cell
- 14) 1      20) A      cell wall
- 15) 4      B      cytoplasm
- C      nucleus
- D      chloroplasts
- 21) Amy inherited the detached earlobes from her father.
- 22) Alicia Tan inherited the brown eyes from her grandfather and detached earlobes from her grandmother.
- 23) It is the nucleus.
- 24) a) The process is cell growth.
- b) Cells will still divide to replace the old and damaged cells and not for growth for there will be a certain age where everyone would stop growing.