

CHONGFU PRIMARY SCHOOL

First Continual Assessment 2004

Science

Primary Five EM1 / EM2

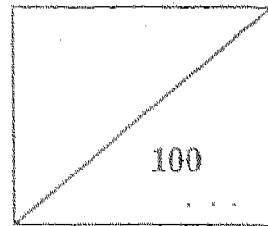
CA1

Name: _____ ()

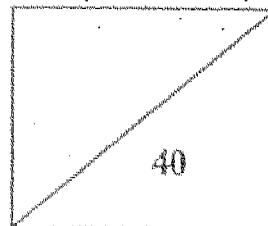
Class: Pr 5 _____

Date: 4/3/04

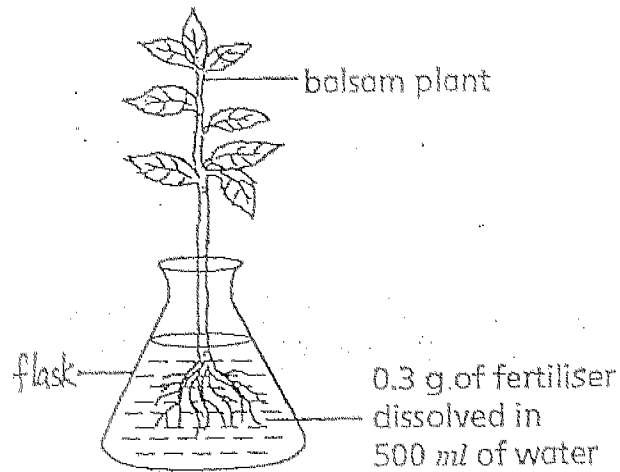
Duration: 1 Hour 45 Minutes



Booklet A



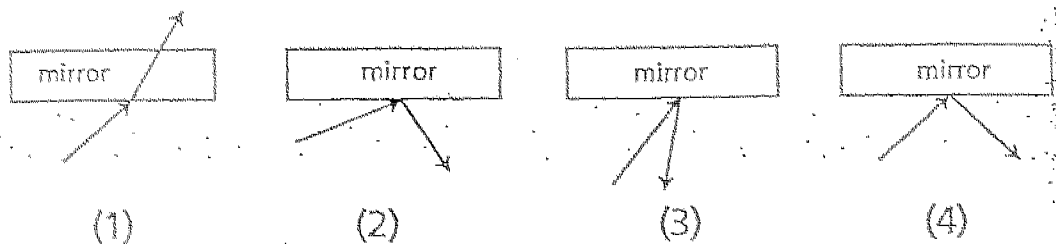
5.



A healthy balsam plant is placed in a flask containing 0.3g of fertiliser dissolved in 500ml of water. Which of the following can possibly represent the volume of water and amount of fertiliser in the flask after five days?

	Volume of water (ml)	Amount of fertilizer (g)
(1)	600	0.2
(2)	450	0.4
(3)	500	0.3
(4)	450	0.2

6. Ben used a torch to shine a ray of light onto a mirror. Which one of the following diagrams shows what happened to the ray of light?



10. The table below shows the temperature of some planets in the solar system. What conclusion can you make from the table?

Planet	Distance from the Sun (million km)	Temperature ($^{\circ}\text{C}$)
Jupiter	778	-140
Mars	228	20
Venus	108	400
Mercury	58	430

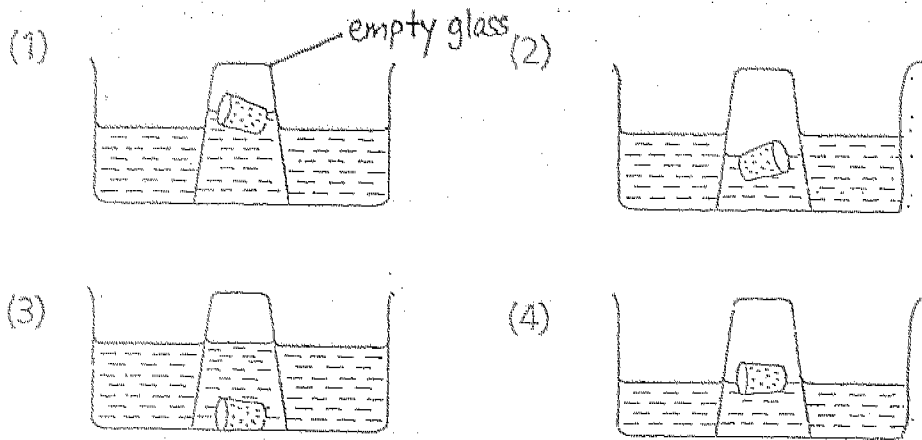
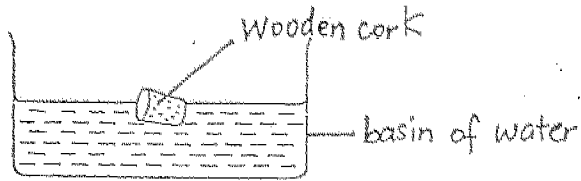
- (1) The size of the planet determines its temperature.
- (2) The nearer the planet to the Sun, the lower its temperature.
- (3) The further the planet from the Sun, the higher its temperature.
- (4) The distance of the planet from the Sun determines its temperature.

11. The table shows the cell division of an animal cell. How many cells will there be at 1 minute?

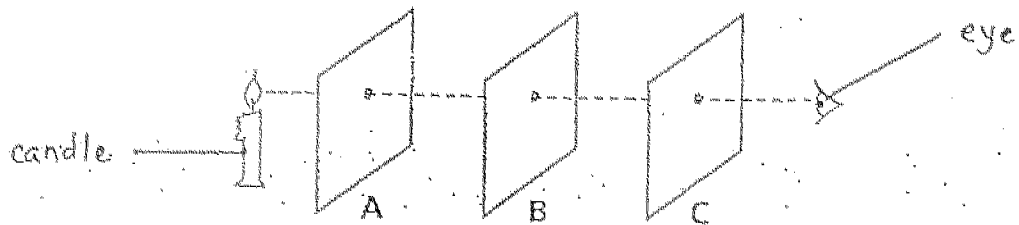
Time (seconds)	Number of cells
10	2
20	4
30	8
40	16

- (1) 28
- (2) 32
- (3) 36
- (4) 64

14. A piece of wooden cork is floating in a basin of water. Which one of the diagrams below shows what happens when an empty glass is directly inverted over it?

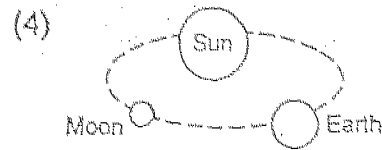
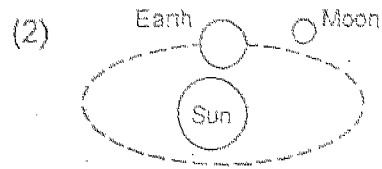
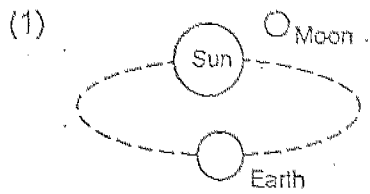


15. The diagram below shows that the light of the candle can be seen when the 3 cardboards, A, B and C were placed in such a position. When cardboard B was raised by placing a book under it, you would not be able to see the candle flame. This happened because light _____.



- (1) travels in straight lines only
- (2) travels only through air
- (3) travels in one direction only
- (4) travels only at a specific height

20. Which one of the following diagrams correctly represents the positions of the Sun, Earth and Moon in the Solar System?



Pr 5 CA1 Science Answers.

1) 3

2) 2

3) 2

4) 1

5) 4

6) 4

7) 2

8) 3

9) 1

10) 4

11) 4

12) 3

13) 2

14) 2

15) 1

16) 3

17) 4

18) 2

19) 1

20) 2

CHONGFU PRIMARY SCHOOL

First Continual Assessment 2004
Science
Primary Five EM1 / EM2

CA1

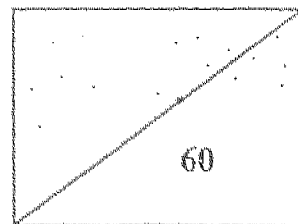
Name: _____ ()

Class: Pr 5' _____

Date: 4/3/04

Duration: 1 Hour 45 Minutes

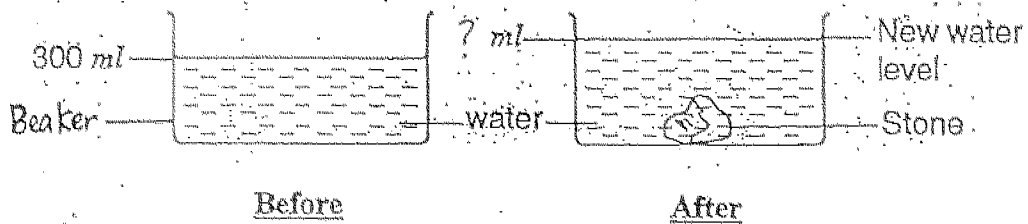
Booklet B



24. A cell is a _____ unit of life. It needs _____, water and oxygen to live. It can move, respond to changes, _____ and reproduce. A multicellular organism grows when its cells _____ (2 marks)

25. When water changes from _____ state to _____ state, we say that it freezes. The _____ at which a liquid freezes is called its freezing point. The freezing point of pure water is _____ (2 marks)

26.

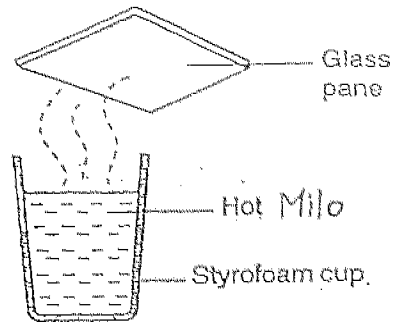


A piece of stone (40 cm^3 in volume) is put into a beaker containing 300ml of water as shown above.

(a) What will be the new water level in the beaker after the stone is put in? (1 mark)

(b) What does this experiment show? (1 mark)

28.

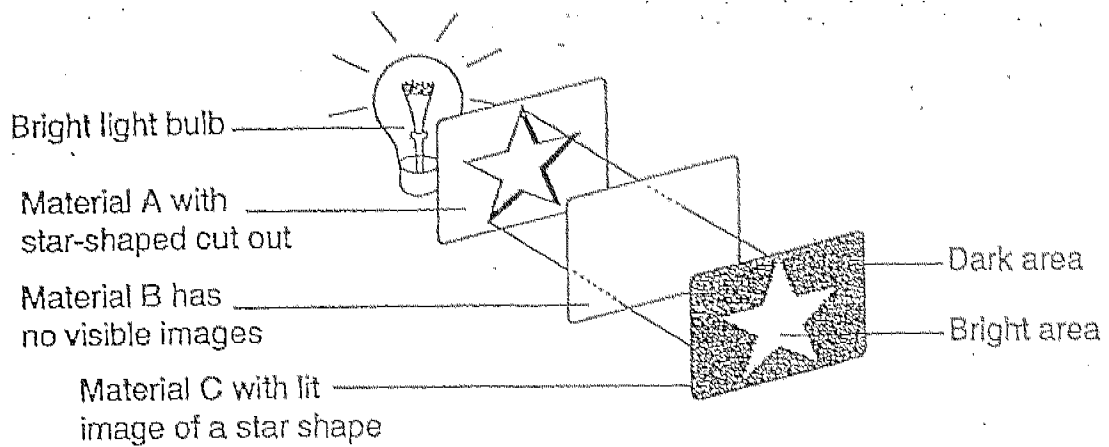


Hot Milo was poured into a styrofoam cup. A glass pane was then brought near the steam emitted by the hot Milo.

(a) What would you observe on the glass pane after a while? (1 mark)

(b) Why do you think it happened? (1 mark)

29. Study the diagram below.



Are the 3 materials used in the experiment 'opaque', 'transparent' or 'translucent'?

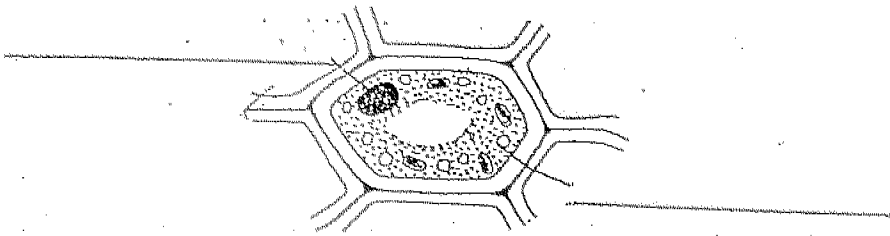
(3 marks)

(a) Material A is _____

(b) Material B is _____

(c) Material C is _____

33. The diagram below shows a plant cell. Label the nucleus and cytoplasm in the diagram. (2 marks)



34. Why is light not a form of matter? (2 marks)

35. (a) What are planets? (1 mark)

(b) Give two examples of planets. (2 marks)

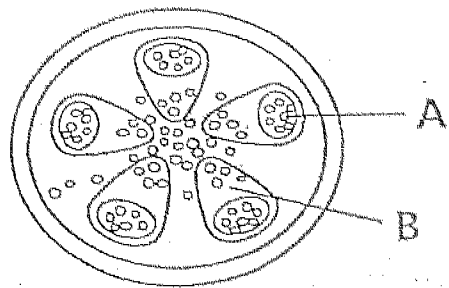
36. Tony wants to find out if hot water evaporates faster than cold water. List 3 conditions that he should keep constant in order to have a fair test. (3 marks)

(a) _____

(b) _____

(c) _____

40. Look at the cross-section of the stem shown below.



A and B represent different types of tubes found in a stem. In the table below, write down what material(s) is / are transported by A and B. (2 marks)

Part	Material(s) transported in this tube
A	
B	

41. The _____ is at the centre of our Solar System. It is the only _____ in our Solar System. It is a giant ball of hot gases. It gives out _____ and _____. (2 marks)

42. Why is the Earth able to support a great diversity of life? (2 marks)

- (a) _____

- (b) _____

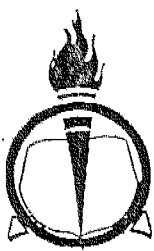
45. Yeast is a microscopic organism that increases its number by _____.
The original cell is called the 'parent' cell and the new cell is called a _____ cell. (2 marks)

46. State the functions of the following: (2 marks)

(a) Chloroplasts: _____

(b) _____

****END OF PAPER****
©CHECK THROUGH YOUR ANSWERS CAREFULLY©



崇福学校

CHONGFU PRIMARY SCHOOL

CA1

Name : _____ () Marks: _____
 Class : Pr 5 Subject: Science Answers Date: 4th March 04

- | | | | | |
|-------|-------|-------|-------|-------|
| 1) 3 | 2) 2 | 3) 2 | 4) 1 | 5) 4 |
| 6) 4 | 7) 2 | 8) 3 | 9) 1 | 10) 4 |
| 11) 4 | 12) 3 | 13) 2 | 14) 2 | 15) 1 |
| 16) 3 | 17) 4 | 18) 2 | 19) 1 | 20) 2 |

Working Column

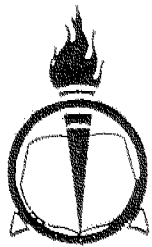
Booklet B

- 21) a) It helps in weather forecasting.
 b) It helps in communication.
 c) It helps us to know more about the Earth.

22)	solid	Liquid	Gas
	Rock	water	
	Wood	oil	Wind
	Pen		
	Sand		
	(Mercury) or	(Mercury)	

- 23) It is a living thing that is made up of many cells.
- 24) single, food, grow, divides.
- 25) liquid, solid, temperature, 0°C
- 26) a) 340ml
 b) The piece of stone occupies space.
- 27) a) The water level in Beaker A will decrease while the water-level in Beaker B will remain the same.
 b) The plants take in water through the roots.

28) a) water droplets



Name: () Marks:

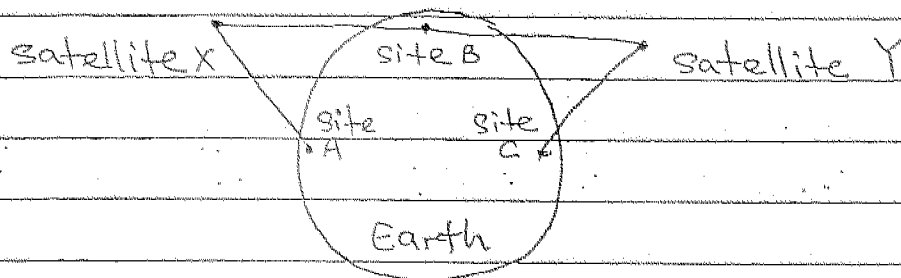
Class: Pr 5 Subject: Science Answers Date: 4th March 04

- 29) a) opaque
b) transparent
c) translucent

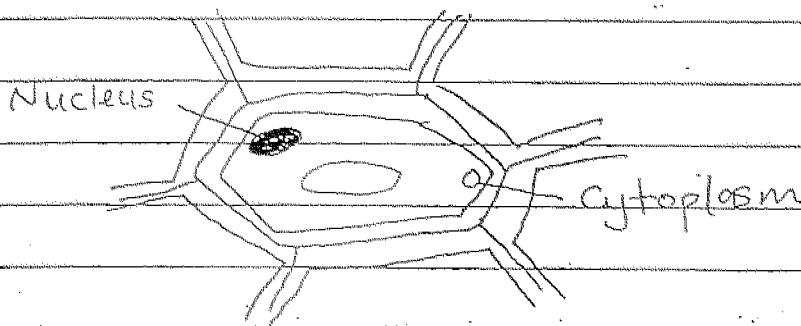
Working
Column

30) The blood that flows into the lungs contains less oxygen but more carbon dioxide than the blood that leaves the lungs.

31) full moon, gibbous, half moon.



33.



34. It has no mass and does not occupy space.

35) a) Objects that revolves around the sun.
b) Mercury, Venus.

36) a) The same amount of water.
b) The same materials of the cup.
c) The place must be the same.

37) A) objective lens

2) a) ---

38) It is essential for growth and it replaces

崇福学校
CHONGFU PRIMARY SCHOOL



Name :

(CA1) Booklet B () Marks:

Class :

Pr 5

Subject:

Science Answer

Date:

4th March 04

39) a) cell wall

b) chloroplast

Working
Column

40) A | collects food

B | collects water

41) sun, star, heat and light.

42) a) The position from the sun.

b) The right amount of atmosphere.

43) a) Movement of the Earth around the sun.

b) Tilting of the Earth's Axis.

44) A) axis

B) Equator

b) M.

45) budding, daughter.

46) a) Chloroplast contains chlorophyll which make food with the help of sunlight.

b) It supports a plant cell and gives it a regular shape.