



RED SWASTIKA SCHOOL

SAT

RED SWASTIKA SCHOOL

2004 MID-YEAR EXAMINATION

MATHEMATICS

Name : _____ ()

Class : Primary 4 / _____

Date : 11 May 2004

PART 1

20 Questions

40 Marks

Duration of Paper : 1 hour 45 minutes

Note:

1. Do not open this Booklet until you are told to do so.
2. Questions 1 - 20 are to be done on the OAS provided.
3. Read carefully the instructions given at the beginning of each part of the Booklet.
4. Do not waste time. If a question is difficult for you, go on to the next one.
5. Check your answers thoroughly and make sure you attempt every question.

Part I: Multiple-Choice Questions

Questions 1 to 20 carry 2 marks each. For each question, four options are given. One of them is the correct answer. Make your choice (1, 2, 3, 4). Shade the correct oval (1, 2, 3 or 4) on the Optical Response Sheet (ORS).

(40 marks)

-
1. 60 thousands and 5 tens is the same as _____.
- (1) 6 005
(2) 6 050
(3) 60 005
(4) 60 050
2. $70\,000 + 3\,000 + 550 =$ _____ $+ 3\,400$
- (1) 70 150
(2) 73 150
(3) 73 550
(4) 76 950
3. Look at the number pattern below. What is the missing number?
63 870, 63 905, _____, 63 975
- (1) 63 935
(2) 63 940
(3) 63 945
(4) 63 950
4. 88 700 is 1 000 less than _____.
- (1) 87 700
(2) 87 800
(3) 89 700
(4) 89 800

5. Mr Lim saves \$295 every month. How much will he save in 11 months?

- (1) \$306
- (2) \$345
- (3) \$3 245
- (4) \$3 255

6. A group of boys shared 1722 stamps equally among themselves. If each boy received 7 stamps, how many boys were there in the group?

- (1) 246
- (2) 248
- (3) 1 715
- (4) 1 2054

7. $\frac{24}{7} = 3 + \frac{\square}{7}$. What is the missing number in the box?

- (1) 14
- (2) 2
- (3) 3
- (4) 21

8. Find the difference between $\frac{5}{10}$ and $\frac{3}{5}$.

- (1) $\frac{1}{10}$
- (2) $\frac{2}{3}$
- (3) $\frac{2}{5}$
- (4) $\frac{4}{5}$

9. $\frac{1}{3} + \frac{4}{9} = \boxed{}$. What is the missing number in the box?

(1) $\frac{1}{9}$

(2) $\frac{7}{9}$

(3) $\frac{5}{12}$

(4) $\frac{4}{27}$

10. How many quarters are there in $3\frac{1}{2}$?

(1) 18

(2) 14

(3) 3

(4) 7

11. Express $\frac{12}{7}$ as a mixed number.

(1) $1\frac{1}{7}$

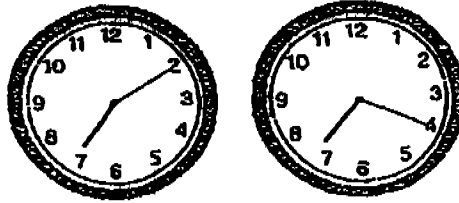
(2) $1\frac{5}{7}$

(3) $12\frac{1}{7}$

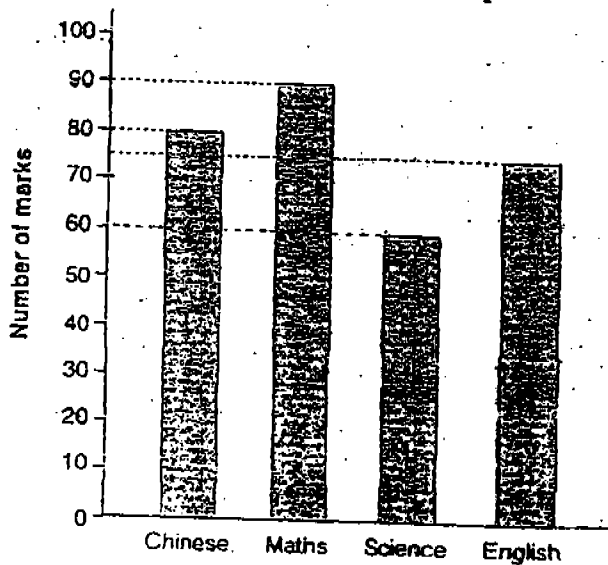
(4) $12\frac{5}{7}$

12. When the minute hand of a clock moves from 7.10 am to 7.20 am, it has moved _____ degrees.

- (1) 10
- (2) 20
- (3) 60
- (4) 120



The graph below shows the marks scored by Alicia in her examination. Study the graph carefully and use it to answer questions 13 and 14.



13. Alicia scored _____ more marks in Mathematics than in English.

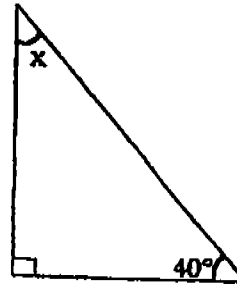
- (1) 10
- (2) 15
- (3) 20
- (4) 25

14. She scored _____ marks in the 4 subjects altogether.

- (1) 250
- (2) 300
- (3) 305
- (4) 400

15. The diagram shown below is not drawn to scale.
The sum of all the angles in the triangle below is 180° .
Find $\angle x$.

- (1) 30°
(2) 40°
(3) 50°
(4) 60°

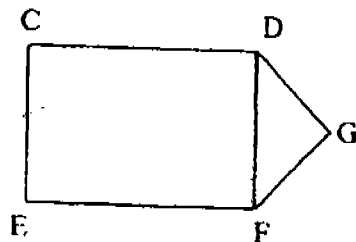


16. How many pair/s of parallel lines are there in the figure shown below?

- (1) 1
(2) 2
(3) 3
(4) 4



17. The figure below, which is not drawn to scale, is made up of a rectangle and a triangle.



The line EF is perpendicular to line _____.

- (1) CD
(2) CE
(3) FG
(4) DG

18. 26 tenths is equal to _____.

- (1) 0.26
- (2) 2.06
- (3) 2.60
- (4) 26.0

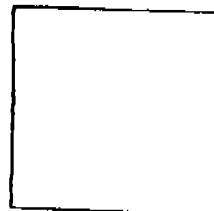
19. The diagram represents a decimal. What is this decimal?



- (1) 0.3 1.3
- (2) 1.3
- (3) 3.0
- (4) 13

20. How many right angles can you find in the square shown below?

- (1) 1
- (2) 2
- (3) 3
- (4) 4





RED SWASTIKA SCHOOL

RED SWASTIKA SCHOOL

2004 MID-YEAR EXAMINATION

MATHEMATICS

Name : _____ ()

Class : Primary 4 / _____

Date : 11 May 2004

PART 2

25 Questions
60 marks

MARKS

	OBTAINED	POSSIBLE
PART 1		40
PART 2		60
TOTAL		100

Parent's Signature : _____

Part II: Short-Answer Questions

Questions Q1 to Q20 carry 2 marks each. Show your workings clearly below each question. Write your answers in the boxes provided. Give your answer in the units stated.

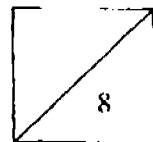
(40 marks)

Q1. Find the value of 4 ten thousands, 46 hundreds and 12 tens.

Q2. Subtract 698 from the sum of 529 and 1 286.
Round off your answer to the nearest hundred.

Q3. Tim and Andrew work 236 hours altogether. If Andrew works 14 hours less than Tim, how many hours does Andrew work?

Q4. $\times 6 = 3\,580 + 338$



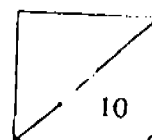
Q5. Find the difference between 4 and $\frac{2}{5}$.

Q6. Shuling started at $3\frac{2}{7}$ and moved forward in steps of $\frac{1}{7}$.
After $\frac{3}{7}$ steps, where would she be?

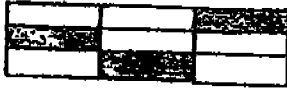
Q7. Lishan has to take 5 steps to walk from one tree to another.
How many steps does she need to take from the 5th tree
to the 17th tree?

Q8. $\frac{19}{6}$ expressed as mixed number is _____.

Q9. If $\frac{2}{5}$ of a number is 8, what is $\frac{1}{4}$ of the number?

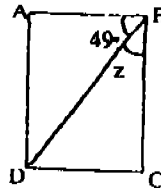


- Q10. What fraction of the figure is unshaded?
(Express your answer in its simplest form.)

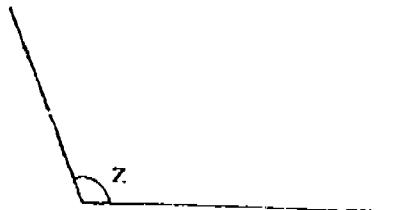


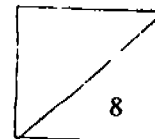
- Q11. Simon spent $\frac{1}{3}$ of his money on a watch and $\frac{2}{9}$ of it on a pen.
What fraction of his money did he spend?

- Q12. The figure below which is not drawn to scale shows a rectangle ABCD.
Find the value of $\angle z$.

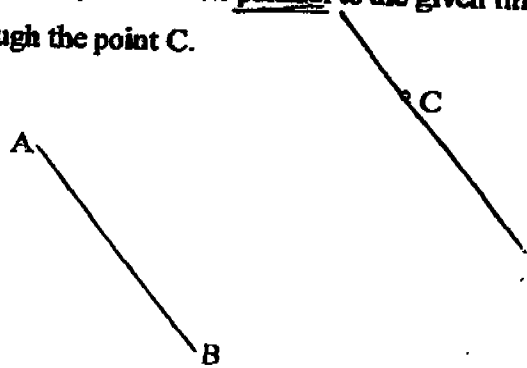


- Q13 Use a protractor to measure $\angle z$.



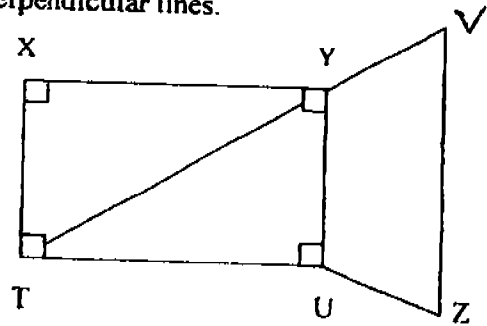


Q14. In the space below, draw a line parallel to the given line AB and passing through the point C.

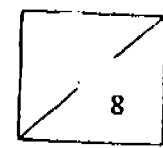


Q15. Find the value of ~~99.04 + 1.5 = 2~~.

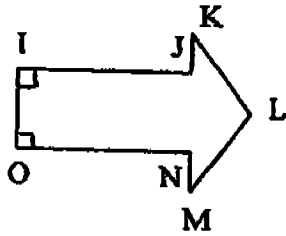
Q16. The figure shown below is not drawn to scale.
Name a pair of perpendicular lines.



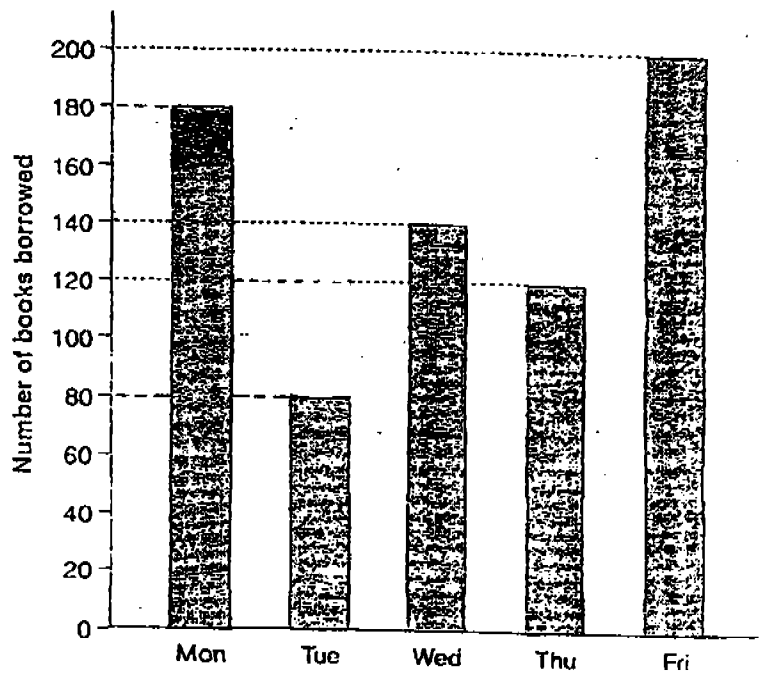
Q17. Find the product of 15. and 8.



Q18. Study the diagram below. Name a pair of parallel lines.



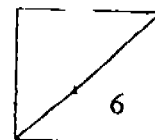
The graph below shows the number of books borrowed from the library. Study the graph carefully and use it to answer questions Q19 and Q20.



Q19. How many more books were borrowed on Friday than on Wednesday?

books

Q20. On which day were $\frac{1}{4}$ of the total number of books borrowed?



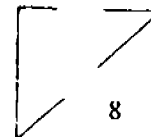
Part II: Long-Answer / Structured Questions

Questions Q21 to Q25 carry 4 marks each. Show your working clearly below each question and write your answers in the spaces provided.

(20 marks)

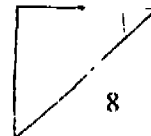
-
- Q21. Elizabeth has \$60 and she is able to buy 2 pens and a book.
She will be short of \$36 if she buys 3 pens and 2 books.
Find the cost of 1 book.

-
- Q22. Li Ling and Denise had the same number of hair clips. After Li Ling had sold 546 of her clips and Denise had bought 940 clips, Denise had 3 times as many hair clips as Li Ling. How many hair clips did Li Ling have at first?



- Q23. Anthony bought 98 boxes of oranges. There were 76 oranges in each box. He gave 28 oranges to his friends and repacked the rest into bags of 5 oranges each.
- (a) How many bags of oranges were there?
 - (b) How much money did he collect if he sold each bag for \$3?

-
- Q24. A sum of money was shared among Charlene, Germaine and Keith. Charlene received $\frac{1}{4}$ and Germaine received $\frac{5}{12}$ of the money. What fraction of the sum of money did Keith receive? (Express your answer in its simplest form.)



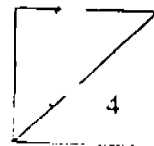
Q25. Daphne was asked to find the sum of three numbers.

The first number is 72 while the second number is $\frac{2}{9}$ of the first number.

The third number is thrice the second number.

Find the sum of the three numbers.

----- END OF PAPER -----



RED SWASTIKA SCHOOL
2004 MID YEAR EXAMINATION
PRIMARY 4 MATHEMATICS

SAT

- 1) 4 Part II
- 2) 1 1) 44720
- 3) 2 2) 1100
- 4) 3 3) 111 hours
- 5) 3 4) 653
- 6) 1 5) 3 $\frac{3}{5}$
- 7) 3 6) 3 $\frac{5}{7}$
- 8) 1 7) 35
- 9) 2 8) 3 $\frac{1}{6}$
- 10) 2 9) 5
- 11) 2 10) $\frac{2}{3}$
- 12) 3 11) $\frac{5}{9}$
- 13) 2 12) 41
- 14) 3 13) 110
- 15) 3 14) 24) $\frac{1}{3}$
- 16) 1 15) 2 $\frac{3}{4}$ 25) 136
- 17) 2 16) YX \perp XT
- 18) 3 17) 120
- 19) 2 18) IJ \neq ON
- 20) 4 19) 60
- 20) Monday
- 21) \$ 12
- 22) 1486 hair clips
- 23) \$ 4464
- 24) $\frac{1}{3}$
- 25) 136