

SA2

**SINGAPORE CHINESE GIRLS' SCHOOL  
SECOND SEMESTRAL ASSESSMENT 2005  
PRIMARY 3  
SCIENCE**

Name: \_\_\_\_\_

Date: \_\_\_\_\_

Class: Primary 3

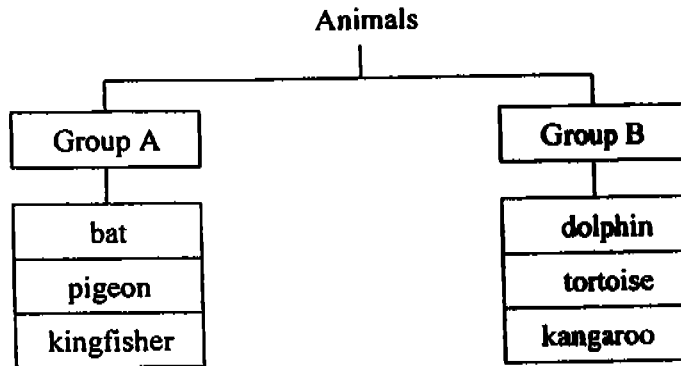
Duration: 1h 15min

**Part I (50 marks)**

For each question from 1 to 25, four options are given. One of them is the correct answer. Make your choice (1, 2, 3 or 4). Shade the correct oval (1, 2, 3 or 4) in the Optical Answer Sheet.

1. Which one of the following is **NOT** a characteristic of living things?  
They can \_\_\_\_\_.
  - (1) grow
  - (2) reproduce
  - (3) move by themselves
  - (4) survive without air, food and water
  
2. A rabbit and a table are similar in that they \_\_\_\_\_.
  - (1) are hard.
  - (2) have legs.
  - (3) can move by themselves.
  - (4) need air, food and water.
  
3. Which one of the following objects is made from an animal?
  - (1) Book
  - (2) Cotton shirt
  - (3) Pearl necklace
  - (4) Rubber slippers
  
4. The tiger, the whale and the pig are similar in their \_\_\_\_\_.
  - (1) diets
  - (2) movements
  - (3) habitats
  - (4) body coverings

Study the classification diagram below and answer Questions 5 and 6.



5. Which one of the following sets of headings is correct for Group A and B?

	Group A	Group B
(1)	Small animals	Large animals
(2)	Cannot run	Can run
(3)	Plant-eaters	Meat-eaters
(4)	Can fly	Cannot fly

6. \_\_\_\_\_ should be classified under Group A.

- |           |               |
|-----------|---------------|
| (1) Guppy | (3) Butterfly |
| (2) Snail | (4) Cassowary |

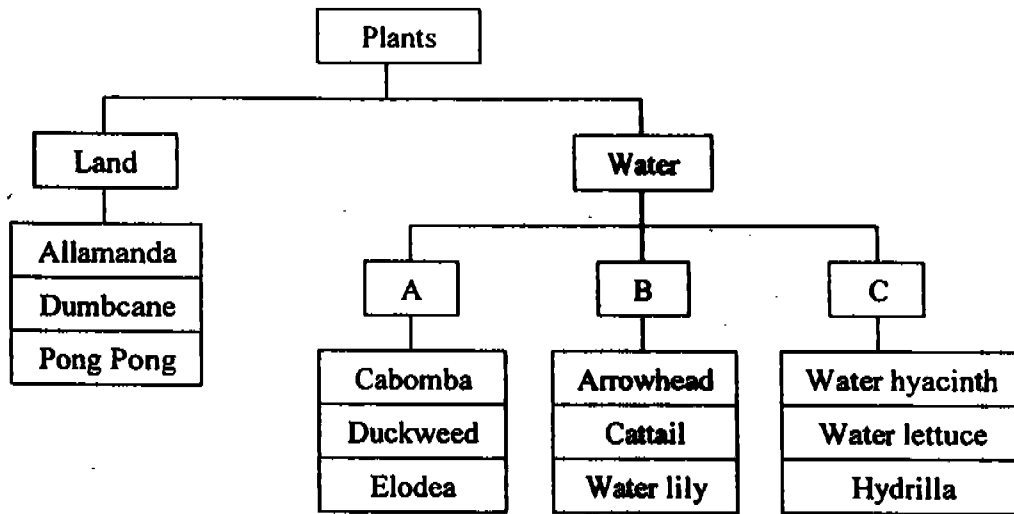
7. Which one of the following statements about plants is **false**?

- (1) They can reproduce.
- (2) They are found on land only.
- (3) They can move by themselves.
- (4) They can make food for themselves.

8. Some examples of fungi are \_\_\_\_\_ and \_\_\_\_\_.

- (1) moss, fern
- (2) mould, fern
- (3) puffball, bacteria
- (4) mushroom, mould

Study the classification diagram below and answer Questions 9 and 10.



9. The two plants that have been wrongly classified are \_\_\_\_\_ and \_\_\_\_\_.

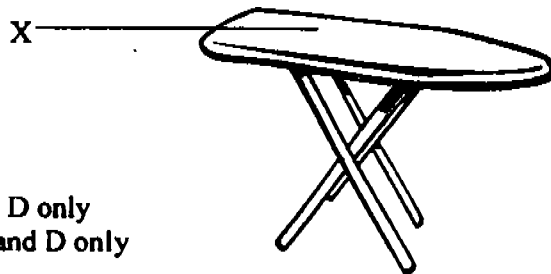
- (1) elodea, cattail                      (3) cabomba, hydrilla  
 (2) cabomba, elodea                    (4) hydrilla, duckweed

10. Which one of the following sets of headings is suitable for A, B and C?

	A	B	C
(1)	Floating plants	Half submerged plants	Submerged plants
(2)	Half submerged plants	Submerged plants	Floating plants
(3)	Submerged plants	Floating plants	Half submerged plants
(4)	Submerged plants	Half submerged plants	Floating plants

11. Look at the picture of the ironing board. If you were to choose a material to make the cover marked 'X', which of the following properties would be important?

- A: Flexible  
 B: Smooth  
 C: Breakable  
 D: High melting point



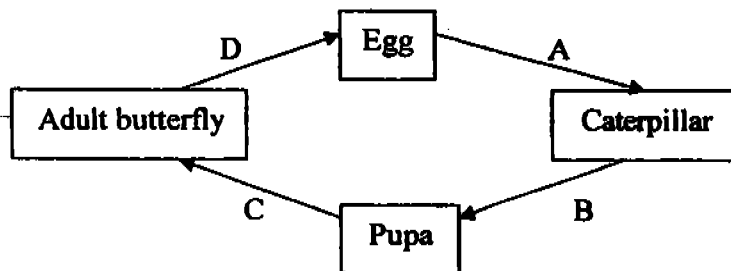
- (1) B only                                      (3) B and D only  
 (2) A and B only                            (4) A, B and D only

12. The tadpole is different from the adult toad in terms of \_\_\_\_\_.

- A: the food it eats  
 B: the way it moves  
 C: the way it breathes

- (1) A and B only                      (3) B and C only  
 (2) A and C only                      (4) A, B and C

13. The life cycle of a butterfly is shown below.



Moulting takes place at \_\_\_\_\_.

- (1) A                                      (3) C  
 (2) B                                      (4) D

14. Four identical dishes, A, B, C and D contained the same amount of cotton wool each. Five bean seeds were placed on the cotton wool inside each of the dishes.

Dish	Air	Water	Sunlight	Temperature
A	Yes	Yes	Yes	30°C
B	No	Yes	Yes	29°C
C	Yes	No	No	33°C
D	Yes	Yes	No	29°C

Given the information in the table above, which dish(es) will soon has/have seedlings?

- (1) A only                                      (3) A and D only  
 (2) B and C only                              (4) C and D only

15. The table below shows the physical characteristics of each member of the Tan family.

Short hair	Long hair	Short hair
Short eyelashes	Long eyelashes	Long eyelashes
Thick lips	Thin lips	Thick lips
Small eyes	Big eyes	Big eyes

Which characteristics has Thomas inherited from his mother?

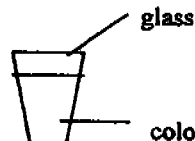
- (1) Thin lips, big eyes
  - (2) Short hair, thick lips
  - (3) Long eyelashes, big eyes
  - (4) Long eyelashes, small eyes
16. Tim was given three glasses containing some colourless liquids. He was asked to identify what those liquids were. Which of the following senses will enable him to identify the liquids?



Water



vinegar



Ice cream  
soda

- (1) sight and taste
  - (2) smell and taste
  - (3) sight and touch
  - (4) hearing and smell
17. Susan is blindfolded and given a rose. Which sense organ(s) can she make use of to identify that it is a rose?

- A: skin  
B: tongue  
C: nose  
D: eyes

- (1) C only
- (2) A, B and C only
- (3) A and C only
- (4) A, C and D only

18. Which of the following is/are found in the large intestine?

- A: Saliva
- B: Solid waste
- C: Digested food
- D: Digestive juice

- (1) B only
- (2) B, C and D only
- (3) B and C only
- (4) A, B and C only

19. The \_\_\_\_\_ help a person in his/her movements.

- (1) bones
- (2) bones and nerves
- (3) muscles
- (4) bones and muscles

20. Some bones are classified into either Groups A or B.

Group A	Group B
Thigh bone	Finger bone
Back bone	Toe bone

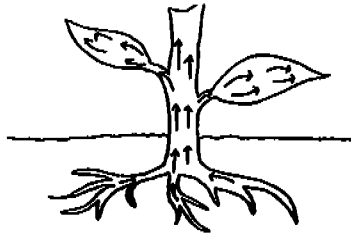
Which one of the following is a suitable heading for Groups A and B?

	Group A	Group B
(1)	Hard bones	Soft bones
(2)	Long bones	Short bones
(3)	Large bones	Small bones
(4)	Straight bones	Curved bones

21. When plants make food, the food is distributed by the \_\_\_\_\_ of the plant to the other parts of the plant.

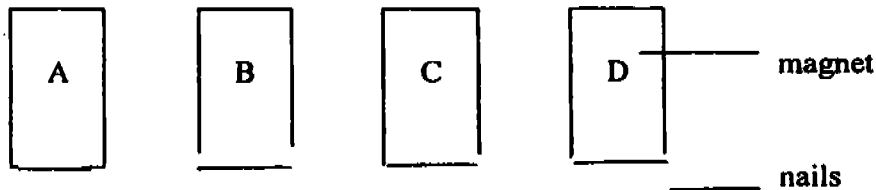
- (1) roots
- (2) flowers
- (3) stem
- (4) leaves

22. The diagram below shows a plant.



The arrows in the diagram show the path taken by \_\_\_\_\_.

- (1) food  
(2) oxygen  
(3) nutrients  
(4) carbon dioxide
23. The four magnets below have nails attracted to their ends.



Arrange the magnets in terms of their magnetic strength from the strongest to the weakest.

- (1) C, A, B, D  
(2) B, A, D, C  
(3) C, D, B, A  
(4) D, C, B, A
24. Which of the following ways are used to make an electromagnet?
- A. Coil a piece of wire around an iron nail  
B. Coil a piece of string around an iron nail  
C. Connect the ends of the wire to batteries  
D. Connect the ends of the string to batteries
- (1) A and D  
(2) A and C  
(3) B and D  
(4) B and C
25. Which one of the following groups of objects use magnets?
- (1) Nail clipper, radio, pencil  
(2) Video tape, sofa, doorbell  
(3) Microphone, helmet, amplifier  
(4) Compass, floppy diskette, refrigerator

**SINGAPORE CHINESE GIRLS' SCHOOL  
SECOND SEMESTRAL ASSESSMENT 2005  
PRIMARY 3  
SCIENCE**

Name: \_\_\_\_\_

Date: \_\_\_\_\_

Class: Primary 3 \_\_\_\_\_

Duration: 1h 15min

Practical	20
Part I	50
Part II	30
Total	100

Parent's Signature:  
\_\_\_\_\_

**Part II (30 marks)**

Answer all the following questions.

26. Study the pictures of the leaves below carefully.



Leaf A



Leaf B

a) List two similarities between Leaves A and B that you can observe. (2m)

1) \_\_\_\_\_

2) \_\_\_\_\_

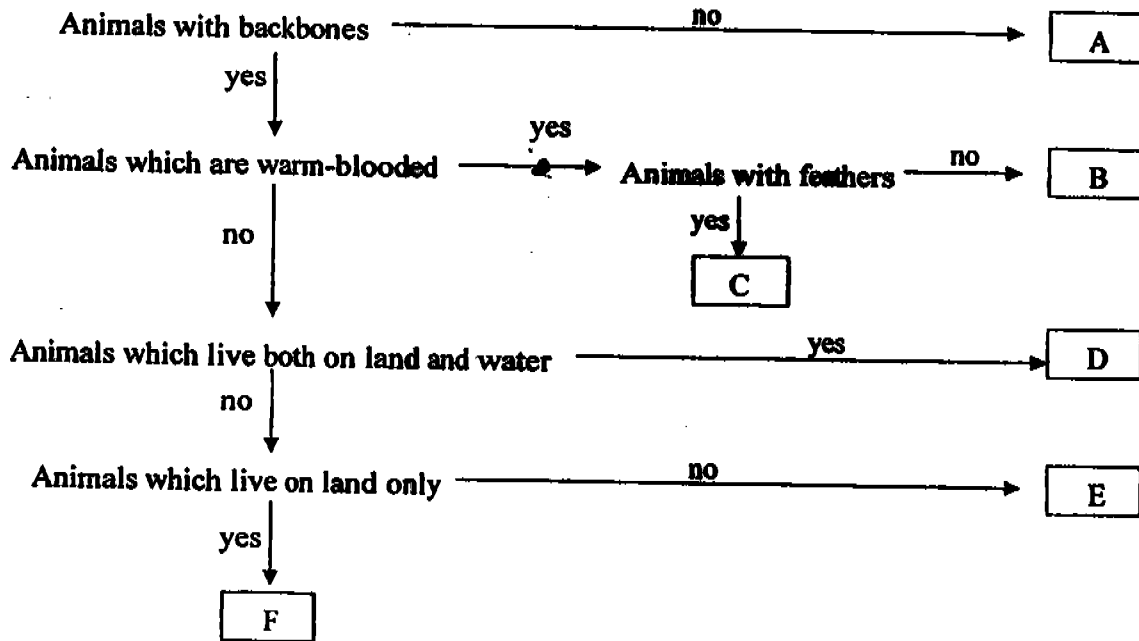
b) State one important function of leaves (1m)

\_\_\_\_\_

3



27. In the flowchart below, A, B, C, D, E and F represent six different animals.

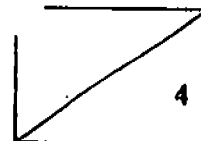


a) Identify the letter that best represents each of the following animals. (3m)

- i) Frog : \_\_\_\_\_
- ii) Gecko : \_\_\_\_\_
- iii) Goat : \_\_\_\_\_
- iv) Hawk : \_\_\_\_\_
- v) Earthworm : \_\_\_\_\_
- vi) Weedy seadragon : \_\_\_\_\_

b) Name another animal that has the same characteristics as Animal F. (1m)

\_\_\_\_\_



28. Raihanah conducted several tests on materials, A, B, C and D, and tabulated her results below.

	A	B	C	D
Bend	Yes	No	No	Yes
Stretch	Yes	No	No	Yes
Breakable	No	No	Yes	No
Waterproof	No	Yes	No	Yes

- a) Which material would you use to make a dining table? (1m)

---



---

- b) What are the properties of the material identified in (a)? (1m)

---



---

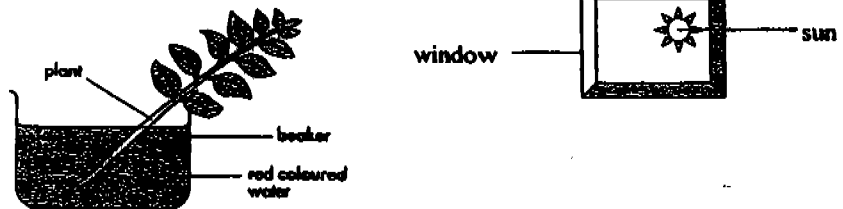
- c) Would you give a toy made of material C to a baby? Why? (2m)

---



---

29. Steven placed a plant in a beaker of red coloured water as shown in the diagram below.

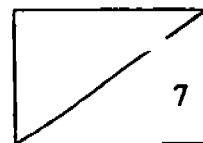


- a) What would Steven observe after three days? (1m)

---

- b) What does this experiment show? (2m)

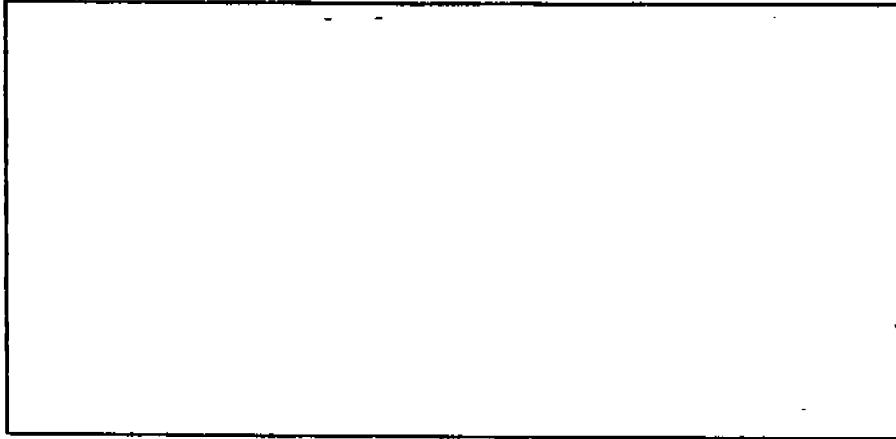
---



c) What is another function of roots? (1m)

---

30. a) Draw the life cycle of a grasshopper in the box below (2m)

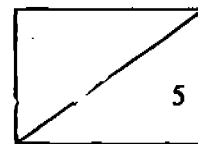


b) List two similarities between the life cycles of the grasshopper and the chicken. (2m)

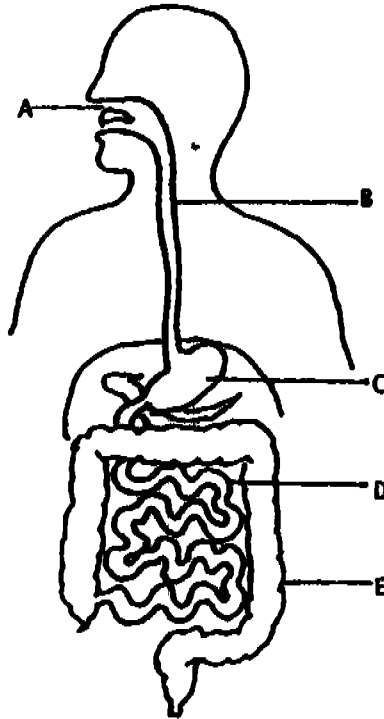
Similarities:

i) \_\_\_\_\_  
\_\_\_\_\_

ii) \_\_\_\_\_  
\_\_\_\_\_



31. The figure below represents our digestive system.



a) Identify the parts of the digestive system (A, B, C, D or E) where digestion takes place. (1 ½ m)

---

b) What is Part E known as?

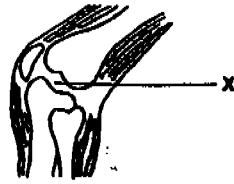
---

c) What happens at Part E? (1m)

---



32. Below is a picture of a human knee.



a) Name the part marked 'X'. (1m)

\_\_\_\_\_

b) Name another part of the body where you can find (a). (1m)

\_\_\_\_\_

33. Read the following statements. Write 'T' for every true statement and 'F' for every false statement. (3m)

a)	Nickel, copper and iron are magnetic materials.	
b)	The strength of a magnet is independent of its size.	
c)	All magnets have only two poles.	

34. Stroking a nail with a magnet can turn it into a magnet.

a) Explain the stroking process. (2m)

\_\_\_\_\_  
\_\_\_\_\_

b) State one way of de-magnetising a magnet. (1m)

\_\_\_\_\_  
\_\_\_\_\_

SINGAPORE CHINESE GIRLS SCHOOL  
SECOND SEMESTRAL ASSESSMENT 2005  
PRIMARY THREE  
SCIENCE

01. 4	11. 4	21. (3)
02. 2	12. (4)	22. (3)
03. 3	13. (2)	23. 4
04. 4	14. (3)	24. 2
05. 4	15. 3	25. 4
06. 3	16. 2	
07. 2	17. (3)	
08. 4	18. (1)	
09. (4)	19. 4	
10. (4)	20. (2)	

- 26) a) 1) They have the same vein pattern.  
 2) They both have a stalk.  
 b) It helps the plant make food.
- 27) a) i) D ii) F iii) B iv) C v) A vi) E  
 b) Lizard
- 28) a) Material B  
 b) It is unbendable, cannot be stretch and break and can get wet.  
 c) No. It will hurt the baby.
- 29) a) Plants turn red  
 b) Roots absorb water and the stem transports the red water from the roots to the leaves.  
 c) The roots hold the plant firmly to the ground.
- 30) a) egg  
 adult nymph  
 b) i) They both have three stages lifecycles.  
 ii) They both have the egg as their first stage in the lifecycle.
- 31) a) A, C, D  
 b) PART E is the large intestine.  
 c) Removes water.
- 32) a) Hinge joint  
 b) Elbow.
- 33) a) F b) T c) T
- 34) a) Using only either one of the poles, stroke the nail along its entire length in one direction.