

**Primary Three
Science
Semestral Assessment Two**

Section A (30 x 2 marks)

For each question 1 to 30, four options are given. One of them is the correct answer. Make your choice (1,2,3 or 4). Write the correct answer in the box provided.

1. The statements in the box below describe an object.

It is long and sharp.
It is hard but light.
It can be used to join two materials.

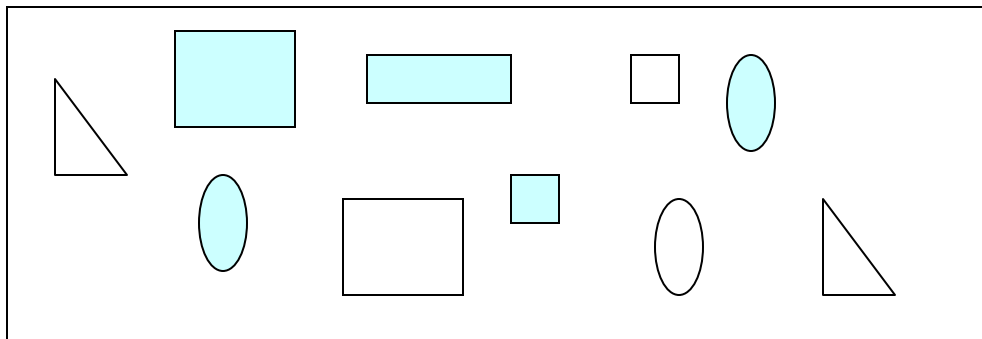
Which one of the following object best fits the description above?

- | | |
|-------------|--------------|
| (1) Stapler | (2) Needle |
| (3) Thread | (4) Scissors |

2. What similar property does a tennis ball and a marble have?

- | | |
|-----------|--------------|
| (1) Size | (2) Texture |
| (3) Shape | (4) Hardness |

3. The objects shown below can be put into 2 groups according to _____.



- | | |
|-------------|------------|
| (1) Shape | (2) Size |
| (3) Pattern | (4) Colour |

4. Which of the following non-living things were once alive?

- A. Pebble
C. Bean curd
- B. Plastic ruler
D. Toothpick

- (1) C and D only
(3) B and C only
- (2) B and D only
(4) A and B only

5. Which one of the following actions does **not** show the characteristic of a living thing?

- (1) A boy playing the piano.
(2) A rabbit hopping across the field.
(3) A deflated ball getting bigger in size.
(4) A mimosa plant closing its leaves.

6. Four jars, each containing five seeds, are placed near a window. Study the table carefully. The seeds in which jars will develop into seedlings?

Jar	Covered with black paper	Seeds on damp cotton wool
A	Yes	Yes
B	Yes	No
C	No	Yes
D	No	No

- (1) A and C only
(3) C and D only
- (2) B and D only
(4) A, B and C only

7. How are the animals below similar?



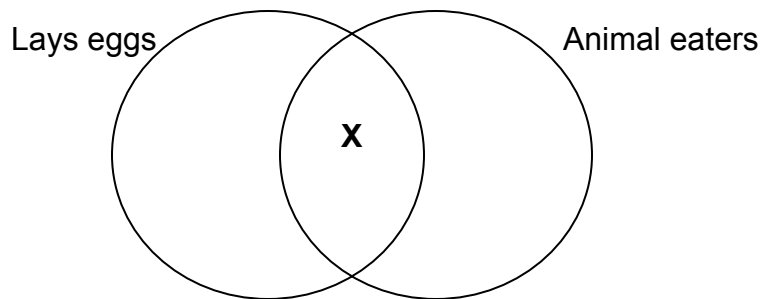
Penguin



Sparrow

- (1) They both can fly.
- (2) They are meat eaters.
- (3) They are of the same size.
- (4) They are covered with feathers.

8. Study the Venn diagram shown below.



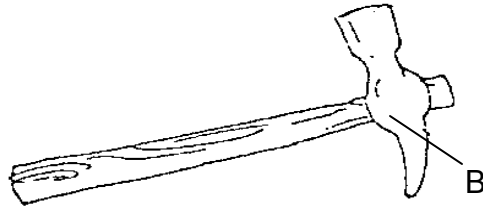
Which one of the following animals can **X** be?

- (1) Goose
- (2) Leopard
- (3) Dolphin
- (4) Crocodile

9. Which one of the following items is hard but brittle?

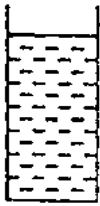
- (1) Grass jelly
- (2) Bamboo stick
- (3) Metal sheet
- (4) Porcelain vase

10. What material is part B of the object below made of?

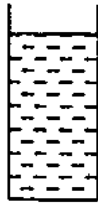


- (1) Wood
- (2) Metal
- (3) Plastic
- (4) Rubber

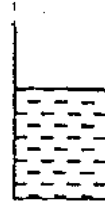
11. Four cups, A, B, C and D of the same size but made of different materials were filled with water as shown below.



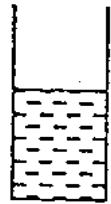
A
ceramic cup



B
plastic cup



C
metal cup



D
paper cup

Which one of the following statements is true?

- (1) Cup A is lighter than Cup B.
- (2) Cup C is as heavy as Cup D.
- (3) Cup B is heavier than Cup D.
- (4) Cups B and D are of the same weight.

12. The young of a butterfly is called a caterpillar at the _____ stage.

- (1) egg
- (2) pupa
- (3) larva
- (4) nymph

13. For a chick to be hatched from an egg on the 21st day, it needs _____.

- | | |
|-------------|------------|
| (1) light | (2) water |
| (3) shelter | (4) warmth |

14. Which of the following statements are true about a cockroach?

- A. It has a pair of wings.
- B. It has three body parts.
- C. It is found near dustbins.
- D. It gives birth to its young.

- | | |
|------------------|---------------------|
| (1) A and C only | (2) A, B and D only |
| (3) B and C only | (4) A, B and C only |

15. Which one of the following statements about identical twins is definitely **correct**?

- (1) They are equally intelligent.
- (2) They have the same height.
- (3) They have the same thumbprints.
- (4) They are of the same racial group.

16.

Mrs Tan is applying some ointment onto Serene's wound.

Which sense organs are used by Mrs Tan in the above situation?

- | | |
|--------------------|-------------------|
| (1) Eyes and hands | (2) Eyes and skin |
| (3) Ears and skin | (4) Nose and eyes |

17. In the classification table below, which fruit has been grouped **incorrectly**?

Fruits

Sour	Sweet	Rough	Smooth
lemon soursop	cherry honeydew	durian strawberry	lychee papaya

- (1) lemon
(3) strawberry

- (2) honeydew
(4) lychee

18. In which one of the following systems is the windpipe found?

- (1) circulatory
(3) respiratory

- (2) skeletal
(4) digestive

19. The joints found in the _____ do **not** allow movement.

- (1) skull
(3) knees

- (2) ankle
(4) fingers

20. Which one of the following is **not** a function of the backbone?

- (1) It protects our brain.
(2) It protects our spinal cord.
(3) It helps us to stand upright.
(4) It provides support for our ribs.

21. Muscles _____ when they contract.

- | | |
|----------|-------------|
| (1) pull | (2) bend |
| (3) push | (4) stretch |

22. The food we eat has to be _____ before our body can make use of them.

- | | |
|--------------|-------------|
| (1) melted | (2) grinded |
| (3) digested | (4) decayed |

23. Which one of the following organs does **not** belong to the digestive system?

- | | |
|-------------|----------------|
| (1) gullet | (2) intestines |
| (3) stomach | (4) diaphragm |

24. Digestion of food is completed in our _____.

- | | |
|---------------------|---------------------|
| (1) anus | (2) stomach |
| (3) small intestine | (4) large intestine |

25. Trees are planted along the roadside so that they can _____.

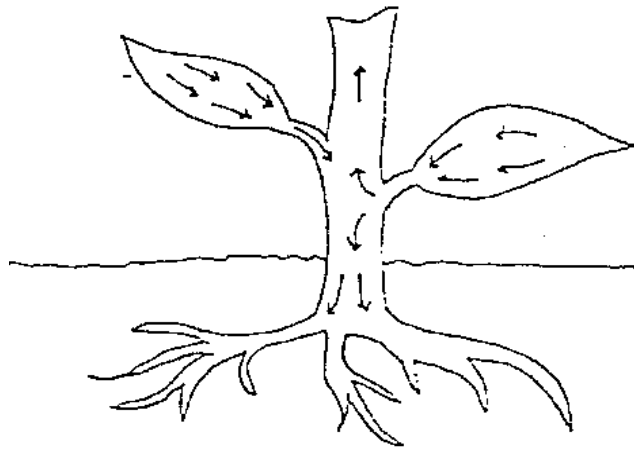
- A. purify the surrounding air
- B. make food during the day
- C. provide shade for pedestrians
- D. make the place more beautiful

- | | |
|---------------------|----------------------|
| (1) A, B and C only | (2) A, C and D only |
| (3) B, C and D only | (4) All of the above |

26. Which one of the following is the function of fruits of a plant?

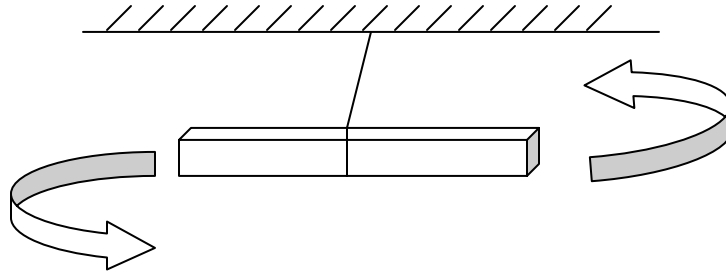
- (1) To provide food for animals.
- (2) To protect the seeds inside them.
- (3) To help the seeds inside them grow.
- (4) To make the plant look more attractive.

27. The diagram below shows a plant.
The arrows in the diagram show the path taken by the _____.



- (1) food
- (2) fertilizer
- (3) water
- (4) sunlight

28. The diagram below shows a freely-turning bar magnet.



What happens when it stops turning?

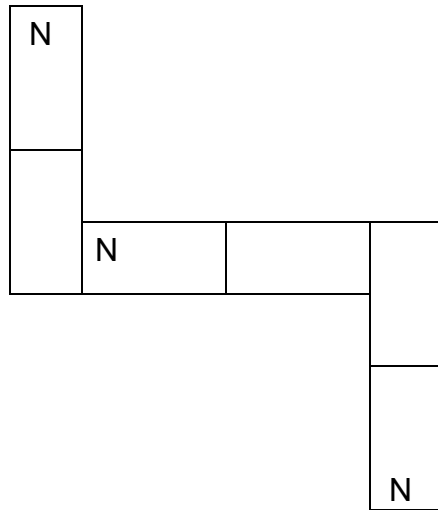
- (1) It comes to rest in a east-west direction.
- (2) It comes to rest in a north-south direction.
- (3) It drops onto the ground as it is too heavy.
- (4) It turns again when it has enough magnetic force.

29. Which one of the following actions will not cause a magnet to lose its magnetism?

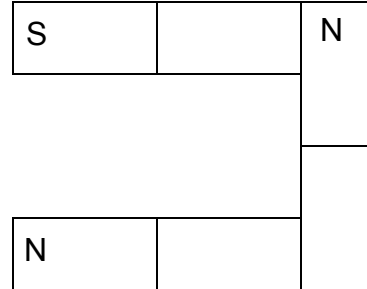
- (1) Heating
- (2) Hammering
- (3) Stroking with a magnet
- (4) Dropping from a height

30. Study the arrangement of 3 bar magnets as shown below.
Which arrangement is possible?

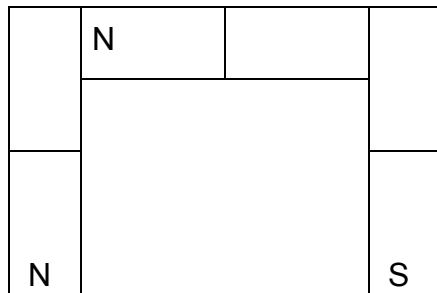
(1)



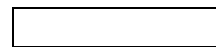
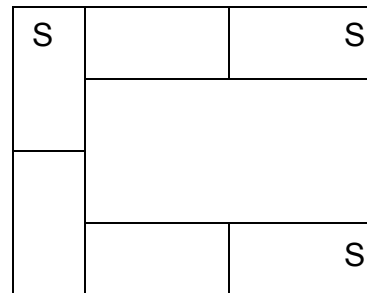
(2)



(3)



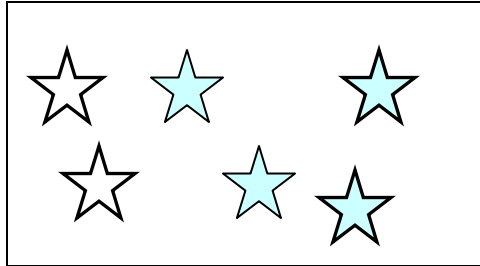
(4)



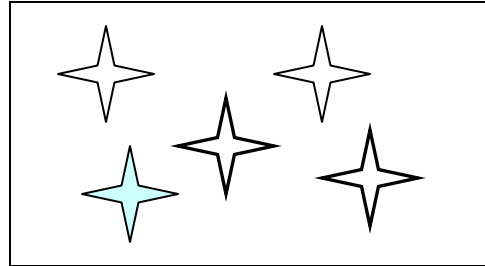
Section B (40 marks)

For each question, write the answers in the space provided below.

31. Look at the objects given below.



Group X



Group Y

(a) How are the above objects grouped? [1 mark]

Group X : _____

Group Y : _____

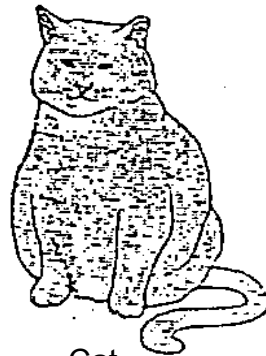
(b) Name another property that can be used to group the objects into 2 groups only. [1 mark]

Property : _____

32. Look at the two animals below.



Penguin



Cat

(a) Name the group that each of the above animals belongs to. [1 mark]

Penguin: _____ Cat: _____

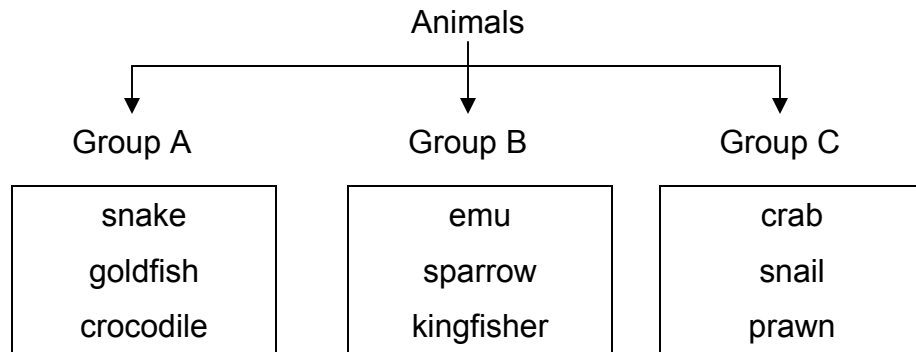
(b) Give a reason for your answer in (a). [1 mark]

33. The picture below shows a centipede.



Is it an insect? Give a reason for your answer. [2 marks]

34. The animals below are classified according to their body coverings.



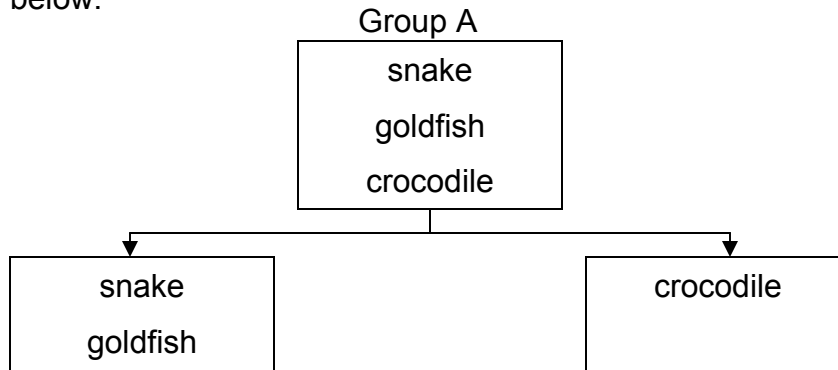
(a) Write a suitable heading for each group of animals. [3 marks]

Group A : _____

Group B : _____

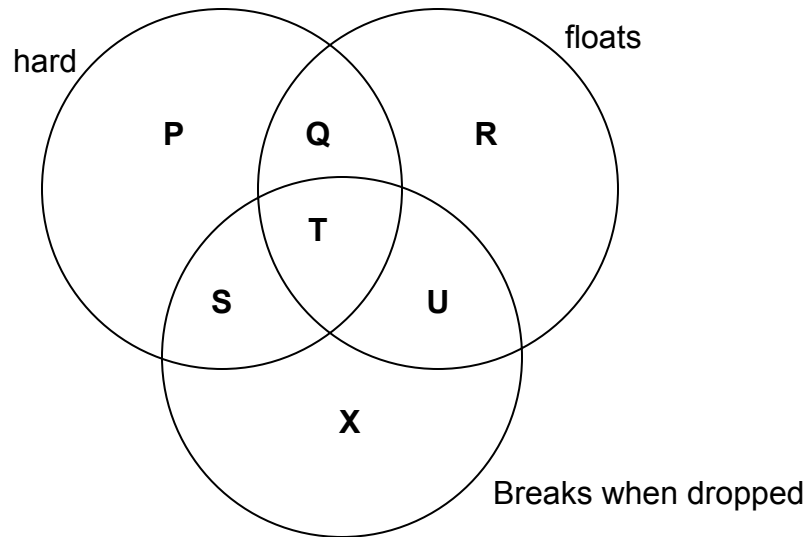
Group C : _____

(b) The animals in group A can be divided into 2 groups as shown below.



Name one similarity between the snake and the goldfish. [1mark]

35. Study the Venn diagram below.



Match the following object with the letters in the Venn diagram above.
[3 marks]

Object	Letter
Nail	
Mirror	
Sponge	

36. Study the table given below.
Based on the findings in the table, identify materials G and H. [2 marks]

Paper	Fabric	Rubber	Glass
-------	--------	--------	-------

Materials	Waterproof	Stretchable	Breakable	Hard	Soft
G		√			√
H	√		√	√	

G: _____ H: _____

37. A merchant was looking for suitable material for making school files. He tested material X and Y by placing them in water.

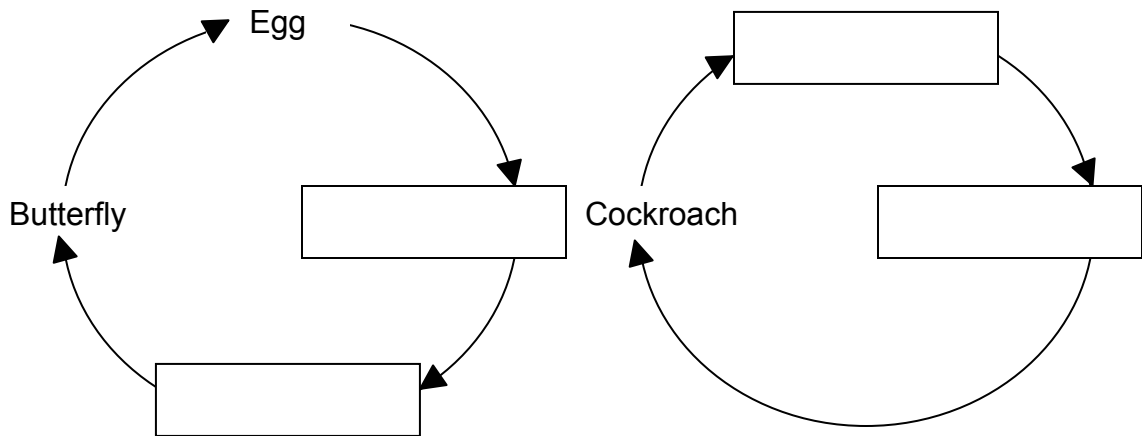
From the table of results shown below, he chose material Y.

Material X	Material Y
It sinks.	It floats.
It absorbs water.	It does not absorb water.

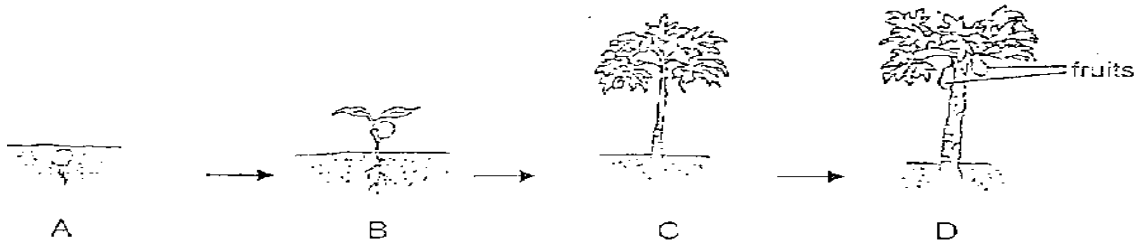
- (a) What is material Y? [1 mark]

- (b) Give one reason why he chose material Y. [1 mark]

38. The diagrams below show the life cycles of the butterfly and the cockroach. Name the missing stages in the boxes provided. [2 marks]



39. Study the diagram shown below.



(a) What characteristic of living things is shown from B to C? [1 mark]

(b) Plants need air and water to make food. What else do they need to make food? [1 mark]

40. Complete the table below by writing the sense(s) used to make each of the observations. [4 marks]

Observation	Sense(s)
(1) The coffee has turn cold.	(i)
(2) The basket of rotten apples is heavy.	(i)
	(ii)
(3) I need more sugar for my coffee.	(i)

41. The table below shows Hassan's heart beats per minute when he was engaged in three different activities A, B and C.

Activity	Number of heart beats per minute
A	85
B	75
C	120

- (a) In which activity was Hassan breathing the hardest? [1 mark]

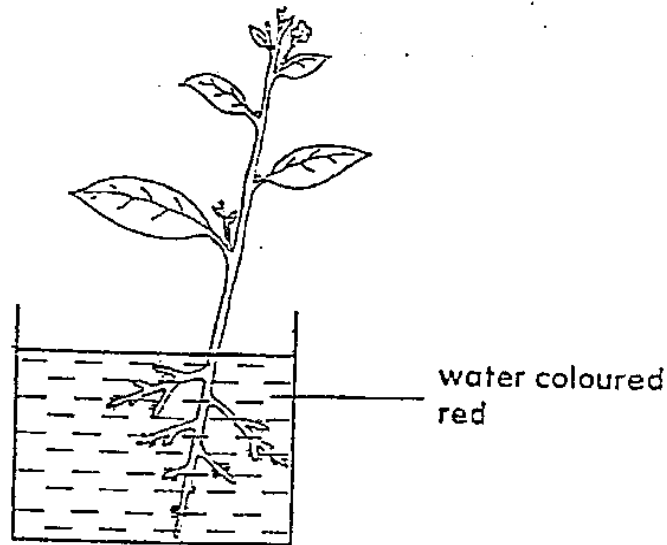
- (b) Name an activity for your answer in (a). [1 mark]

42. Yusof carries out an experiment to find out if he is stronger than Wilson. Each of them will lift up a basket with tennis balls to find out who can lift a basket with more tennis balls. For a fair test, some of their variables should be kept the same.

Put a tick (✓) in the appropriate boxes to show the variables that should be kept the same. [3 marks]

Variables	Kept the same
Material of basket	
Size of tennis balls	
Number of tennis balls	

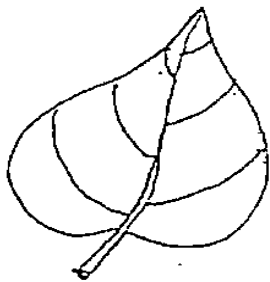
43. A plant was left in a beaker of red-coloured water. [2 marks]



A few days later, some parts of the plant turned red. This was because _____ was taken in by the _____.

Then it was transported up through the _____ in the _____ before it finally reached the leaves and the flowers.

44. Look at the leaves X and Y carefully.
Based on what you can see, state 2 differences between them.
(Do not compare their size)



X



Y

(i) _____

(i) _____

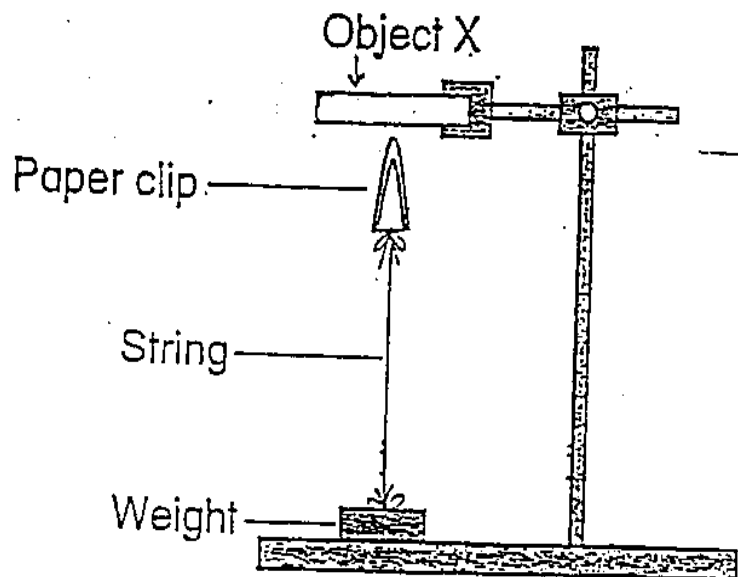
45. Write 'T' for True or 'F' for False in the boxes for the statements below.

(a) Nickel is a magnetic material.

(b) The north pole is stronger than the south pole.

(c) Unlike poles repel each other.

46. Study the diagram shown below.



(a) What is object X? [1 mark]

(b) What helps the paper clip to float in the air? [1 mark]

(c) What will happen if the paper clip is changed to a toothpick? [1 mark]
