



RAFFLES GIRLS' PRIMARY SCHOOL

SEMESTRAL ASSESSMENT ( 2 )  
2004

Your score upon 80 marks		
Highest score	<u>Class</u>	<u>Level</u>
Average score		
Parent's Signature		

Name: \_\_\_\_\_ Class: P 3 Index No: \_\_\_\_\_

4 November 2004

SCIENCE

ATT: 1h 15 min

**SECTION A: Multiple Choice (24 X 2 marks)**

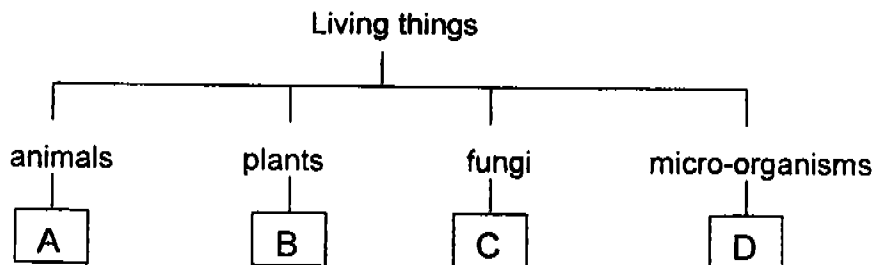
There are **24** questions in this section. Answer **all** of them. For each question, 4 suggested answers numbered 1, 2, 3 and 4 are given. Choose the **most** suitable answer and shade the correct oval on the Optical Answer Sheet (OAS).

1. All living things need \_\_\_\_\_ to stay alive.

- A. air
- B. food
- C. water
- D. sunlight

- (1) A only
- (2) B and C only
- (3) C and D only
- (4) A, B and C only

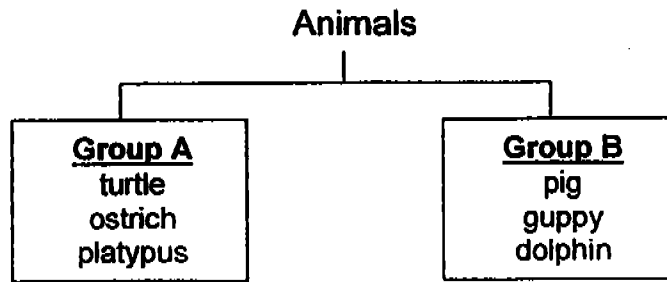
2. The classification table below shows how living things are grouped.



'Mushroom' is represented by the letter \_\_\_\_\_.

- (1) A
- (2) B
- (3) C
- (4) D

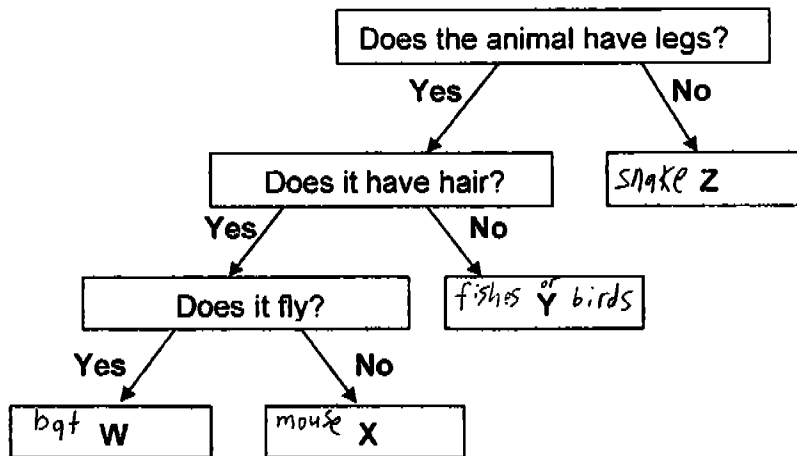
3. Study the classification table below.



How do you think the animals are classified?

	Group A	Group B
(1)	live on land	live in water
(2)	lay eggs	give birth
(3)	have scales	have hair
(4)	herbivores	carnivores

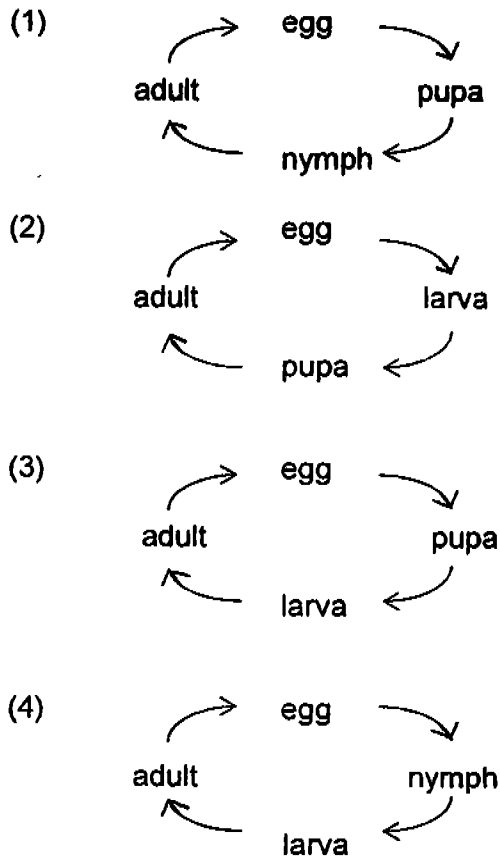
4. Study the flow chart below carefully.



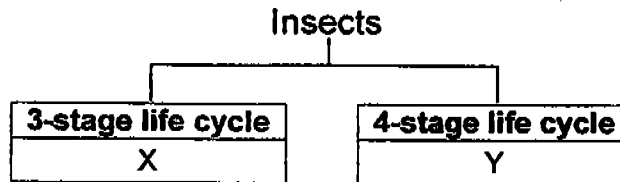
Based on the information given in the flow chart above, what animal do you think X represents?

- (1) bat
- (2) owl
- (~~3~~) eagle
- (4) mouse

5. Which one of the following shows correctly the life cycle of a butterfly?



6. Study the classification table below.



What could X and Y represent?

	X	Y
(1)	cockroach	mealworm beetle
(2)	chicken	cockroach
(3)	mealworm beetle	chicken
(4)	cockroach	chicken

7. Jane described Plant X in the following way:

- A. It has flowers.
- B. It can stand upright.
- C. It has a thin and woody stem.
- D. Its branches are close to the ground.

Plant X is \_\_\_\_\_.

- (1) grass
- (X) papaya tree
- (3) Bougainvillea
- (4) maidenhair fern

8. Which of the following is/are non-flowering plant(s)?

- A. Ixora
- B. Frangipani
- C. mango tree
- D. bird's nest fern

- (1) D only
- (2) A and C only
- (3) B and C only
- (X) B, C and D only

9. Which of the following statement(s) about how a seed grows into a new plant is/are correct?

- A. The seed shrinks as the plant grows.
- B. The seed needs light only to grow into a new plant.
- C. The root grows out of the seed first, followed by the shoot.

- (1) A only
- (2) A and C only
- (3) B and C only
- (4) A, B and C

10. Which one of the following statements is not true?

- (1) The fruits of a plant protect its seeds.
- (2) Green leaves make food for the plant.
- (3) The stem holds the plant firmly to the ground.
- (4) The roots absorb water and minerals from the soil.

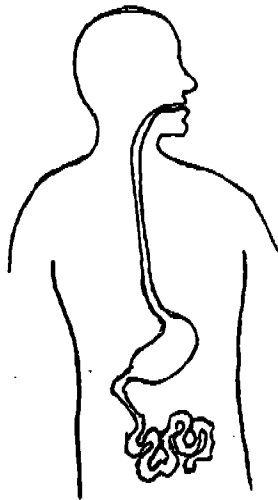
11. Micro-organisms are living things which \_\_\_\_\_.
- (1) can only be found in plants.
  - ~~(2)~~ are harmful to animals only.
  - (3) cannot be found in the human body.
  - (4) can only be seen with the help of a microscope.
12. Which of the following is/are the common reason(s) that the windows in your house are made of glass?
- A. Glass is flexible.
  - B. Glass is waterproof.
  - C. Glass is unbreakable.
- (1) B only
  - (2) A and B only
  - (3) B and C only
  - (4) A, B and C only
13. Lily felt vibrations under her feet as she walked past a construction site. Her sense of \_\_\_\_\_ caused her to feel the vibration.
- (1) sight
  - (2) taste
  - (3) touch
  - (4) hearing

14. Tim was asked to compare two leaves, A and B.  
He wrote down the following observations:  
Leaf A has a lobed edge whereas Leaf B has an entire edge  
Leaf A has a smooth surface while Leaf B has a hairy surface.

Which of his sense organs were used to compare the leaves?

- A. skin
  - B. ears
  - C. eyes
  - D. nose
- (1) A only
  - (2) A and C only
  - (3) B and C only
  - (4) B and D only

15. The diagram below shows the digestive system.



Which part of the digestive system is missing from the diagram?

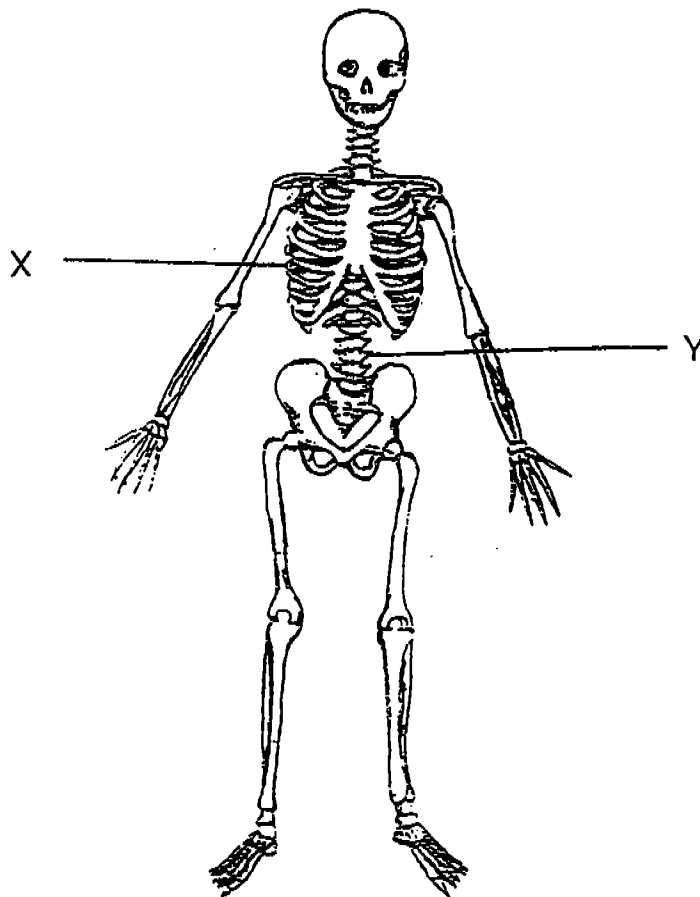
- (1) gullet
- (2) stomach
- (3) large intestine
- (4) small intestine

16. Which of the following statement(s) is/are true of digestion?

- A. Food is broken down into simpler substances.
- B. Digested food is absorbed in the small intestine.
- C. Water in undigested food is absorbed in the large intestine.
- D. Digestion of food begins in the mouth and ends at the anus.

- (1) B only.
- (2) D only.
- (3) A and D only.
- (4) A, B and C only

17. Look at the diagram below.



Which one of the following represents correctly the names for X and Y?

	X	Y
(*)	skull	hip bone
(2)	ribcage	backbone
(3)	finger bone	toe bone
(4)	upper arm bone	shin bone

18. Which of the following statements correctly describe our skeletal system?

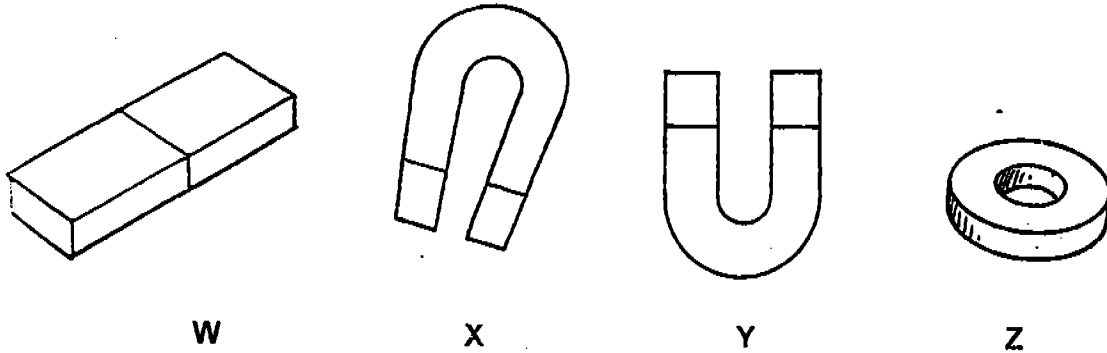
- A. The skull protects the brain.
- B. The ribcage protects the heart and lungs.
- C. Our skeletal system is made up of bones and muscles.
- D. Our skeleton supports our body and gives us our body shape.

- (1) A and B only
- (2) B and D only
- (3) A, B and D only
- (4) A, B, C and D

19. The skeletal and \_\_\_\_\_ systems must work together to enable us to move our body parts.

- (1) digestive
- (2) muscular
- (3) circulatory
- (4) respiratory

20. Look at the magnets shown below.



Which one of the following represents correctly the shapes of the magnets, W, X, Y and Z?

	W	X	Y	Z
(1)	U shape	ring	straight bar	horseshoe
(2)	horseshoe	U shape	ring	straight bar
(3)	straight bar	horseshoe	U shape	ring
(4)	ring	straight bar	horseshoe	U shape

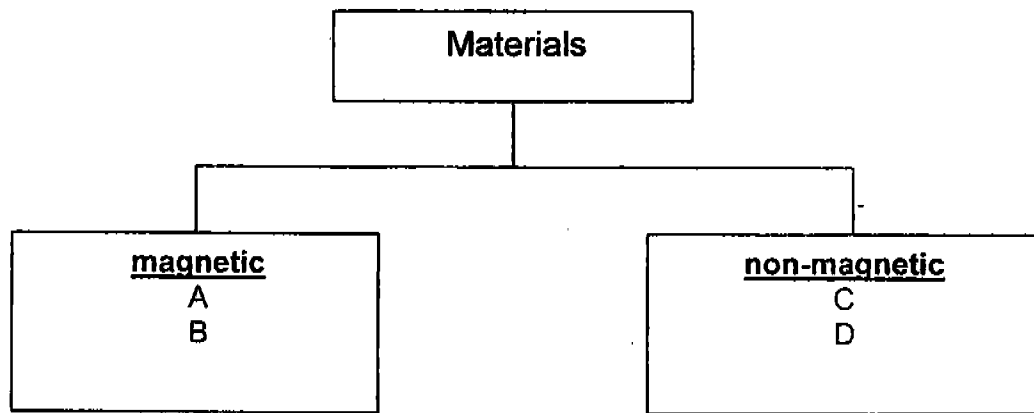


21. When a magnet is put into a box of paper clips, different numbers of paper clips are attracted to the different parts of the magnet as shown in the table below.

Parts of the magnet	No. of paper clips attracted
P	15
Q	3
R	4
S	15

Which are the poles of the magnet?

- (1) P and Q  
 (2) R and S  
 (3) Q and S  
 (4) P and S
22. Look at the classification table below.



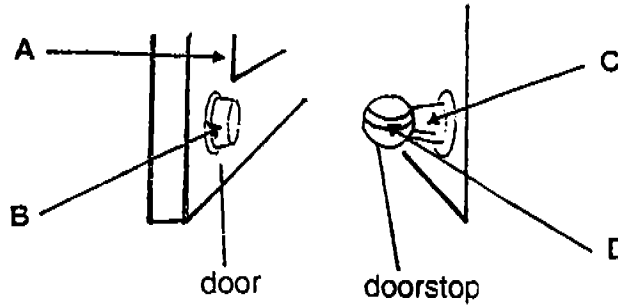
Which one of the following represents correctly what A, B, C and D are most likely to be?

	A	B	C	D
(1)	iron	gold	plastic	paper
(2)	steel	nickel	wood	iron
(3)	plastic	steel	glass	gold
(4)	nickel	iron	clay	wood

23. Which one of the following objects cannot be made into a magnet by the stroking method?

- (1) iron nail
- (2) steel plate
- (3) nickel coin
- (4) aluminium rod

24. The picture below shows a doorstop and part of a door.



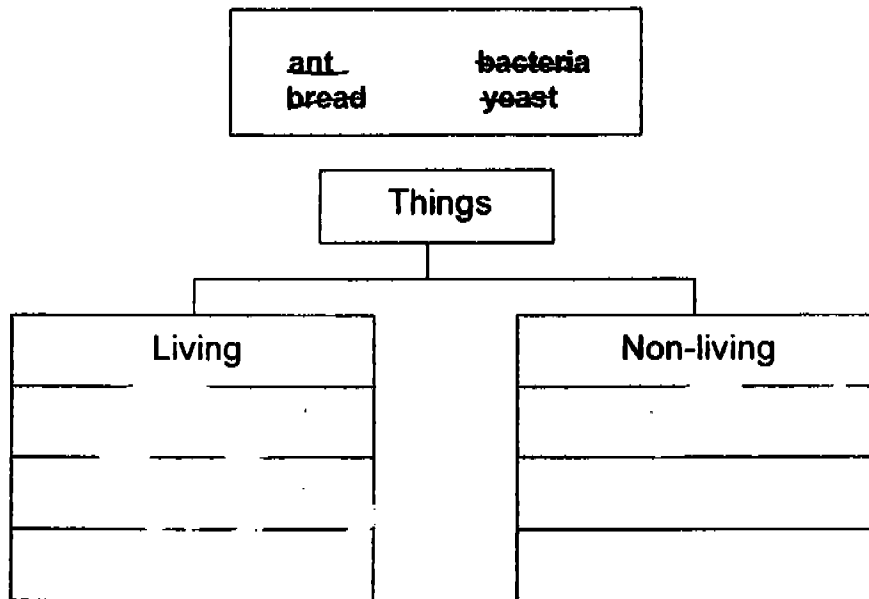
Which one of the following parts is a magnet?

- (1) A
- (2) B
- (3) C
- (4) D

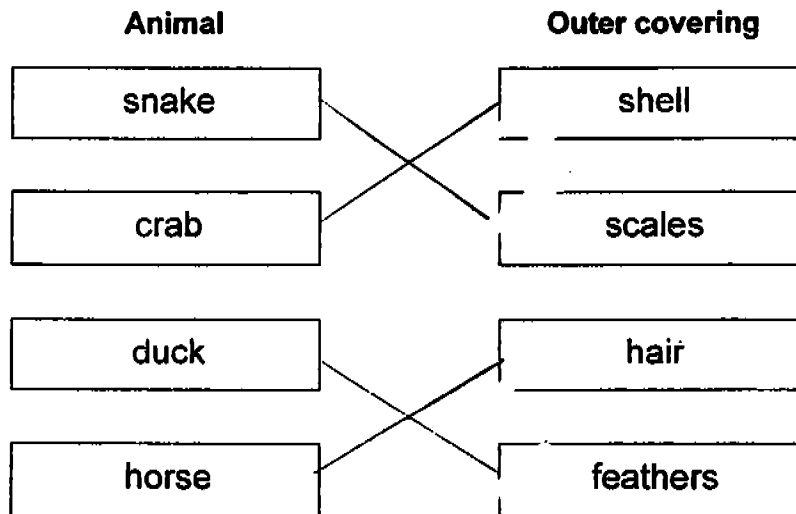
**SECTION B: Open-ended (32 marks)**

There are 16 questions in this section. Answer all of them.  
Write your answers in the spaces provided.

25. Classify the following into two groups (2 m)



26. Draw lines to match the animal with its outer covering. (2 m)



27. All of the following animals move in the same way except for one.



snake



kangaroo



rabbit



frog

(a) Which one of these animals does **not** move in the same way as the rest? (1 m)

---

(b) How does the animal you mentioned in (a) move? (1 m)

---

28. Look at the picture of the penguin below.



Siti made the following statement about the penguin:

Penguins are not birds because they cannot fly.

(a) Is this statement true or false? (1 m)

---

(b) Give a reason for your answer in (a). (1m)

---

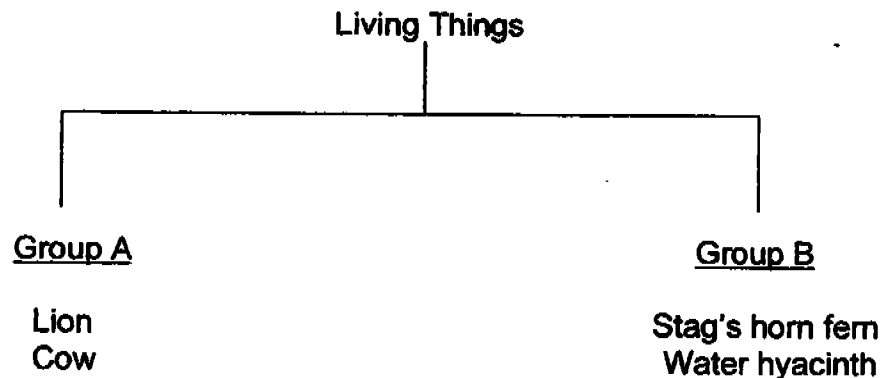
---

29. The table below shows some characteristics of the young and adult forms of Insect X.

Insect X	
Young	Adult
<ul style="list-style-type: none"> <li>eats leaves</li> <li>has many legs</li> </ul>	<ul style="list-style-type: none"> <li>feeds on nectar of flowers</li> <li>has only six legs</li> </ul>

- (a) What could Insect X be? (1 m)
- \_\_\_\_\_
- (b) State another difference, which has not been mentioned above, between the young and adult of Insect X. (1 m)
- \_\_\_\_\_
- \_\_\_\_\_

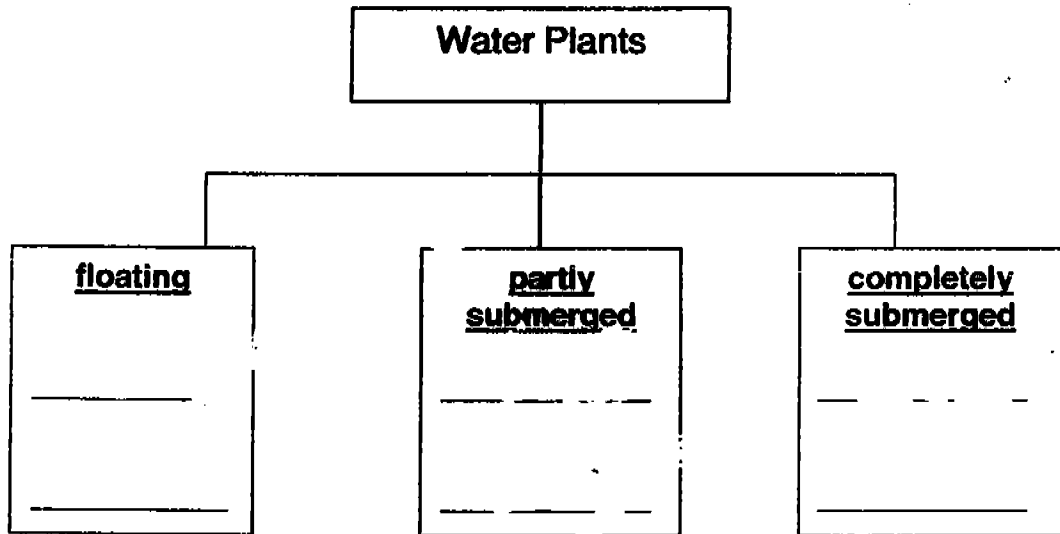
30. The classification table below shows how some living things can be classified.



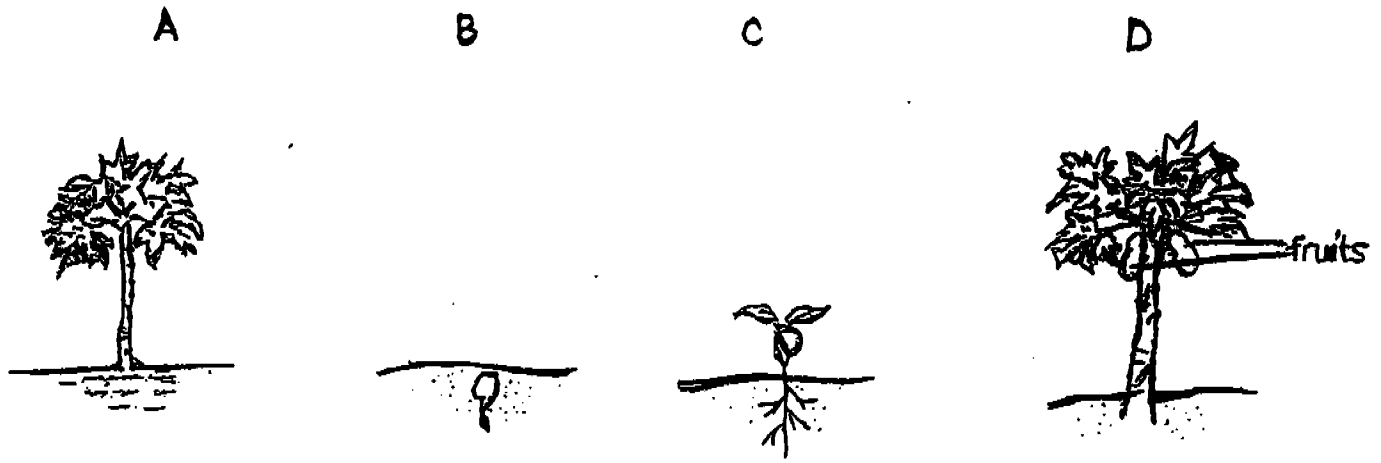
- (a) Write down suitable headings for Group A and Group B. (1 m)
- Group A : \_\_\_\_\_
- Group B : \_\_\_\_\_
- (b) Write down one difference between the living things in Group A and those in Group B. (1 m)
- \_\_\_\_\_
- \_\_\_\_\_

31. Classify the following into the correct groups. (2 m)

cattail    hydrilla    lotus    duckweed



32. The diagram below shows the different stages of growth of a papaya tree.



- (a) Re-arrange the stages of growth to show the correct order, beginning with the first stage. (1 m)

\_\_\_\_\_ (first stage)

- (b) At which stage A, B, C or D will the plant start to make its own food? (½m)

\_\_\_\_\_

- (c) At which stage A, B, C or D can reproduction take place? (½m)

\_\_\_\_\_

33. (a) What is found in the leaves of a green plant that enables the plant to make food ? (½m)

\_\_\_\_\_

(b) Besides light and the substance mentioned in (a), two other substances are needed for plants to make food. Name these two substances. (1 m)

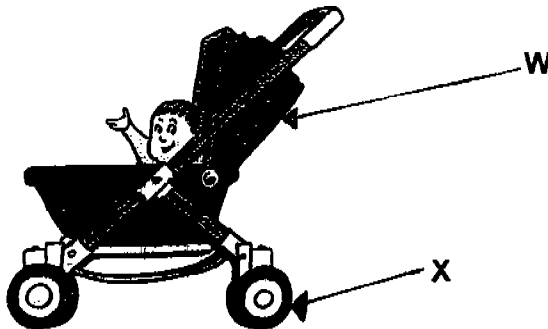
\_\_\_\_\_

\_\_\_\_\_

(c) Name the gas produced when plants make food. (½m)

\_\_\_\_\_

34. Look at the picture shown below.



(a) Give a reason why W is made of plastic. (1 m)

\_\_\_\_\_

(b) Name a material commonly used for making X. (1 m)

\_\_\_\_\_



35. Mary loves eating apples. However, when she has a cold and her nose is blocked, the apples she eats seem to lose some of their flavour.

Explain why the apples seem to have lost some of their flavour when Mary eats them when she has a blocked nose. (2 m)

---

---

36. Tom is eating a piece of bread.  
How do the following found in Tom's mouth help him to digest the bread?

(a) his teeth (1 m)

---

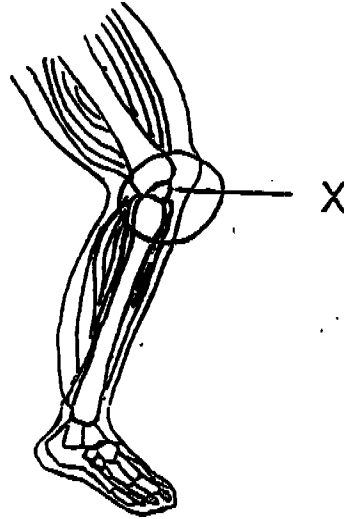
---

(b) his saliva (1 m)

---

---

37. The picture below shows a knee joint.



(a) Name the type of joint at X. (1 m)

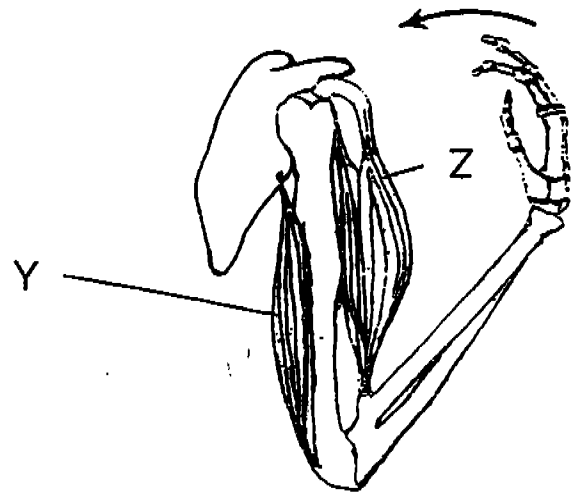
---

(b) In what way does the joint at X allow the leg to move? (1 m)

---

---

38. Sally is bending her arm at the elbow as shown in the picture below.



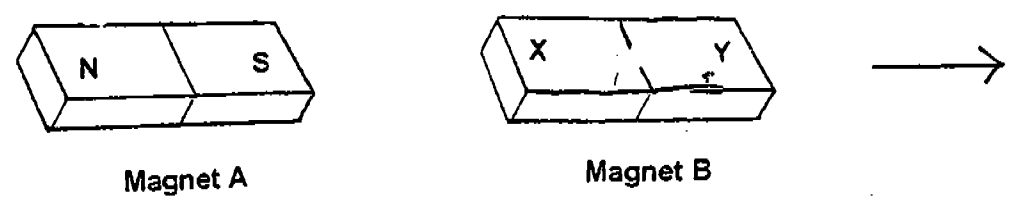
How do the muscles Y and Z enable Sally's arm to bend as shown above?  
(2 m)

---



---

39. Look at the picture below.



When Magnet A is moved towards Magnet B, Magnet B moved away in the direction shown.

(a) Write down the poles X and Y are likely to represent. (1 m)

Part	Pole
X	
Y	

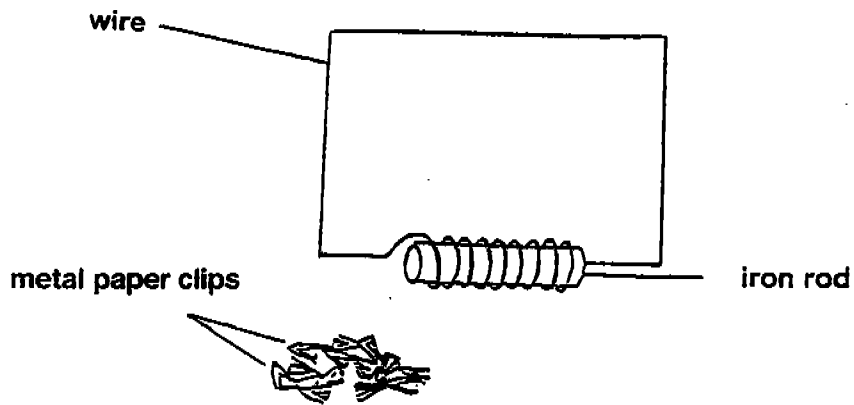
(b) Explain why the magnets interacted in this way. (1 m)

---



---

40. Jane tried to make a magnet using the electrical method as shown below.



(a) Do you think the iron rod will be able to attract the paper clips? (1 m)

---

---

(b) Explain your answer in (a). (1 m)

---

---

- END OF PAPER -

Setters: Miss Haslina  
Mr Ronald Lee  
Mdm Doris Yap

# Raffles Girls' Primary School

Date

No.

(SA2 science 2004)

SA2

1)	4	7) 3	13) 3	19) 1
2)	3	8) 1	14) 2	20) 3
3)	2	9) 3	15) 3	21) 1
4)	4	10) 1	16) 4	22) 4
5)	3	11) 4	17) 2	23) 2
6)	1	12) 2	18) 2	24) 4

## SECTION B

	Living	Non-Living	31) floating	partly submerged	complet
25)	Yeast ant bacteria	bread	duckweed	cuttail lotus	hydrill.
			32) a) B, C, A, D b) C c) D		
26)	Snake - Scales crab - shell duck - feathers horse - hair		33) a) chlorophyll b) Carbon dioxide, water c) oxygen		
27)	a) Snake b) It glides		34) a) It is waterproof, so it will protect the child inside from getting wet. b) Rubber		
28)	a) False b) Although a penguin cannot fly, it still has feathers and all birds have feathers.				
29)	a) Butterfly b) The young of Insect X moults, but the adult of Insect X does not moult.				
30)	a) (Group A) Animals / plants b) Things in Group A cannot make food but things in Group B can make food.	(Group B)			

Raffles primary school  
(SA2 Science 2004)

Date

No

35) The tongue and the nose work together.

- 36) a) Grind and chew the food into small pieces  
b) makes the food soft enough to swallow

- 37) a) Hinge joint  
b) It allows the joint to move in one direction.

38) Muscle Y will relax and muscle Z will contract

39)

	part	pole
a)	X	S
	Y	N

b) Like poles repel, so when magnet A is moved toward magnet B, magnet B will repel.

- 40) a) No  
b) It does not have any battery.