

SA2

**METHODIST GIRLS' SCHOOL (PRIMARY)
SEMESTRAL ASSESSMENT 2 – 2005
PRIMARY 3
SCIENCE**

BOOKLET A

Name : _____ ()

Class : Primary 3. __

Date : 27th October 2005

67

Section A : (30 x 2marks)

For each question, four options are given. Choose the most suitable option and shade your answer in the Optical Answer Sheet (OAS) provided.

1. Which one of the following will grow bigger in size as time passes by?

- (1) a television
- (2) a computer
- (3) a hippopotamus
- (4) a washing machine

2. Plants are different from all other forms of living things because they _____.

- (1) need air
- (2) need water
- (3) are able to make their own food
- (4) respond slowly to their surrounding changes

3. Fins are important to fish because they help the fish to _____.

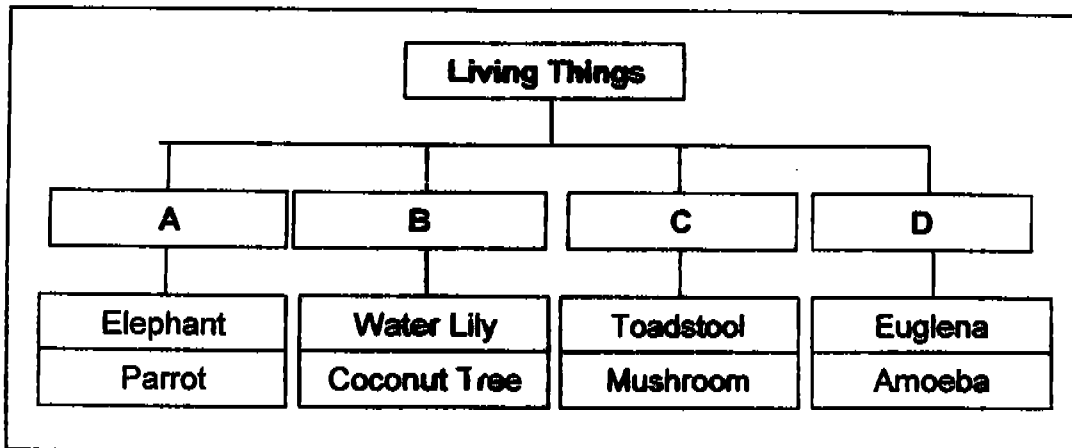
- A : swim
- B : breathe
- C : protect its body
- D : keep its balance

- (1) A and B
- (2) A and D
- (3) A, B and C
- (4) B, C and D

4. A spider is not an insect because it has _____.

- (1) no wings
- (2) jointed legs
- (3) a hairy body
- (4) four pairs of legs

5. Study the classification table below.



What are the correct headings for 'A', 'B', 'C' and 'D'?

	A	B	C	D
(1)	Bird	Plant	Micro-organism	Fungi
(2)	Animal	Plant	Fungi	Micro-organism
(3)	Mammal	Plant	Micro-organism	Fungi
(4)	Animal	Land Plant	Fungi	Micro-organism

6. Linda found an object that has the following properties.

A	It is flexible.
B	It does not break easily.

Which one of the following objects matches the properties that Linda has found?

- (1) mirror
- (2) hammer
- (3) ceiling fan
- (4) water hose

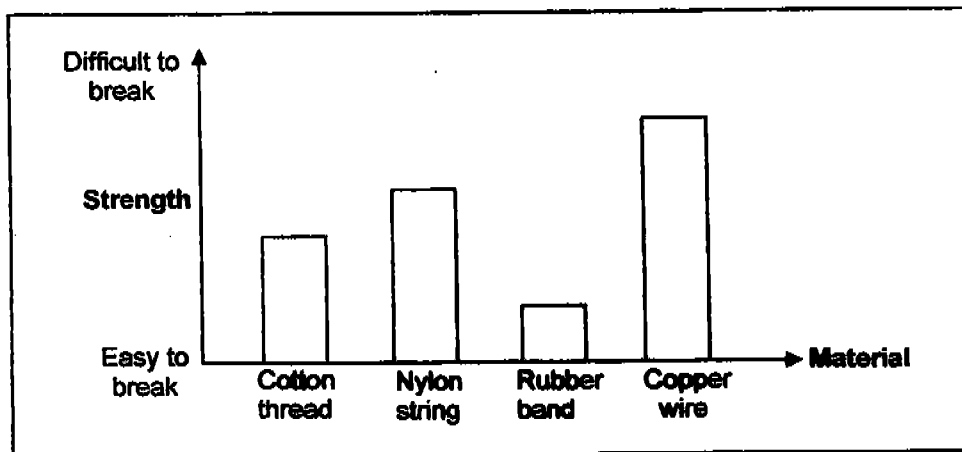
7. Study the table below.

Properties	Breaks when dropped	Hard	Floats
Object A		✓	
Object B	✓	✓	
Object C			✓

Which one of the following best matches Object B?

- (1) metal ball
- (2) plastic ball
- (3) rubber ball
- (4) ceramic ball

8. Susan did an experiment to compare the strength of different materials. She then drew a graph to show the result of her experiment as shown below.

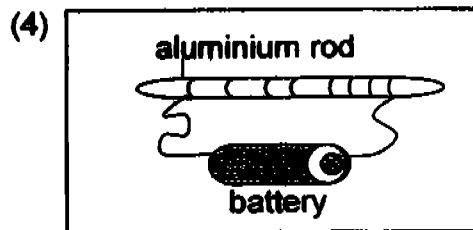
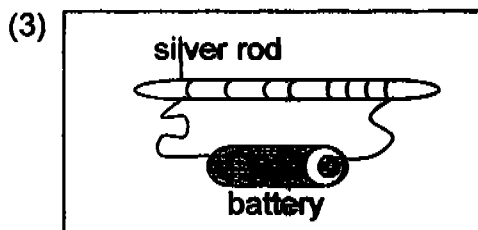
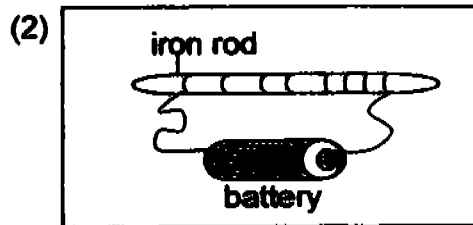
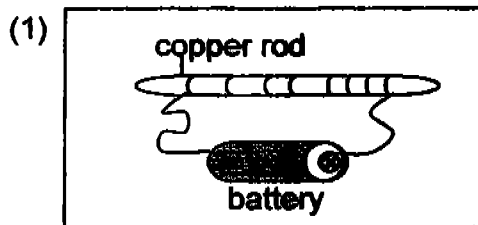


From the graph, which is the weakest material?

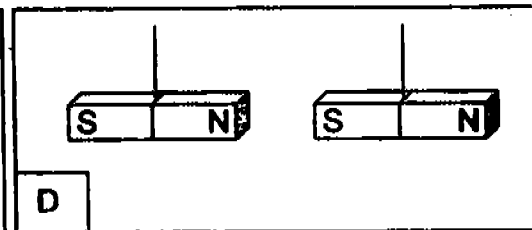
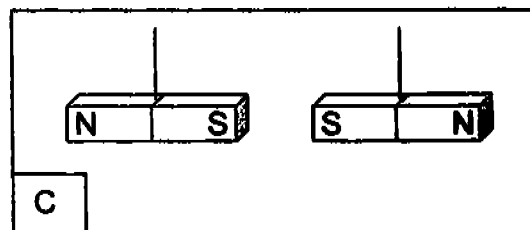
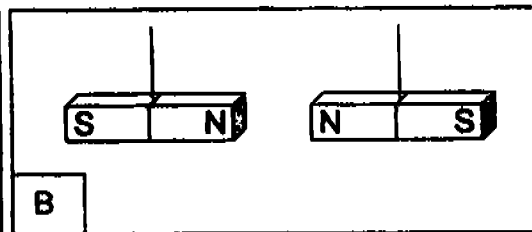
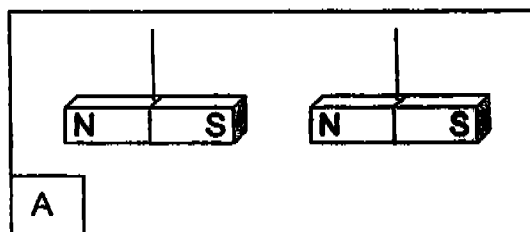
- (1) copper wire
- (2) nylon string
- (3) rubber band
- (4) cotton thread

50

9. Study the set-up carefully. Which rod will attract iron nails?



10. In which of the following arrangements do you think the magnets will repel when they are placed near each other?



- (1) A only
- (2) B only
- (3) B and C
- (4) C and D

51

11. Natural magnet is also known as _____.

- A : lodestone
- B : magnetite
- C : temporary magnet
- D : permanent magnet

- (1) A and B
- (2) B and C
- (3) C and D
- (4) A and D

12. Which one of these animals has a life cycle similar to a cow?

- (1) duck
- (2) ostrich
- (3) dolphin
- (4) grasshopper

13. The table below shows the development of a chicken's egg.

Part Formed	Age of chicken embryo in days			
	2	6	10	21
Head		√	√	√
Eyes		√	√	√
Beak		√	√	√
Wings			√	√
Legs		√	√	√
Feathers				√

How long does it take for the egg to hatch into a chick?

- (1) 2 days
- (2) 6 days
- (3) 10 days
- (4) 21 days

52

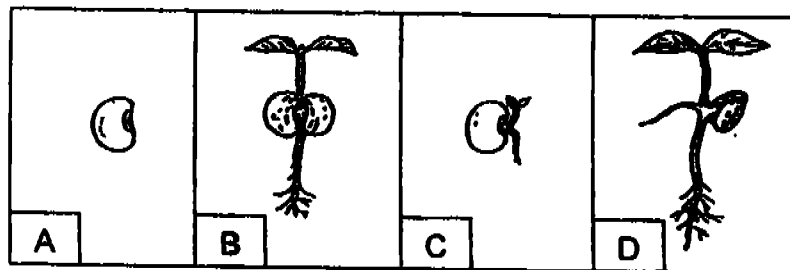
14. Stephanie did a study of Animal X and Animal Y. She drew a checklist and made the observations below.

Observation	Animal X	Animal Y
Life cycle	3 stages	4 stages
It has six legs	No	Yes
Eggs are laid in water	Yes	Yes

Which one of the following would describe Animal X and Animal Y correctly?

	Animal X	Animal Y
(1)	Toad	Cockroach
(2)	Frog	Mosquito
(3)	Mosquito	Toad
(4)	Frog	Butterfly

15. The diagrams below show the stages of growth of a bean seed.

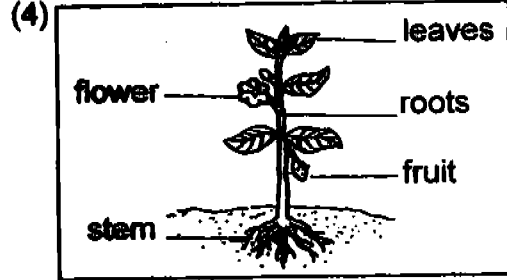
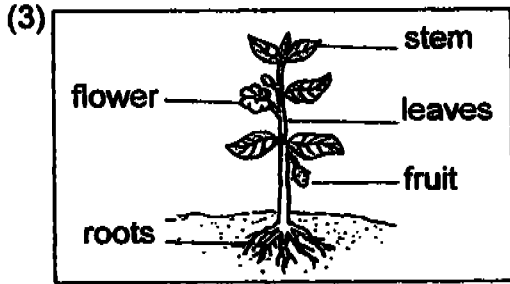
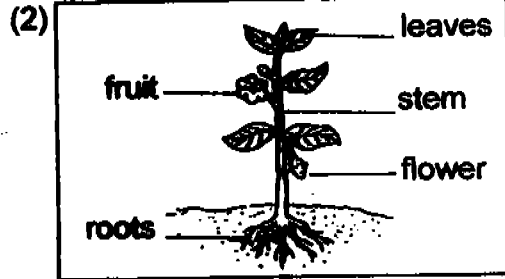
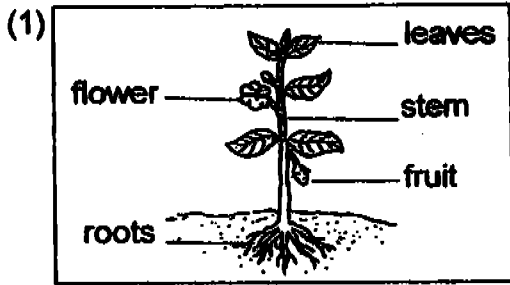


Which one of the following shows the correct order of the stages of growth?

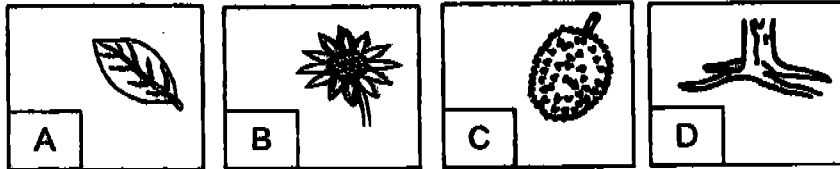
- (1) A, B, C, D
 (2) A, C, D, B
 (3) A, B, D, C
 (4) A, C, B, D
16. Which one of the following statements is incorrect about photosynthesis?
- (1) Oxygen is released into the air.
 (2) Food is produced in the process.
 (3) Carbon Dioxide is absorbed from the air.
 (4) Water is absorbed through the tiny openings under the leaves.

↓3
e.

17. Which one of the diagrams below is labelled correctly?



18. Different parts of a plant are shown below.



Which part of the plant protects the seed?

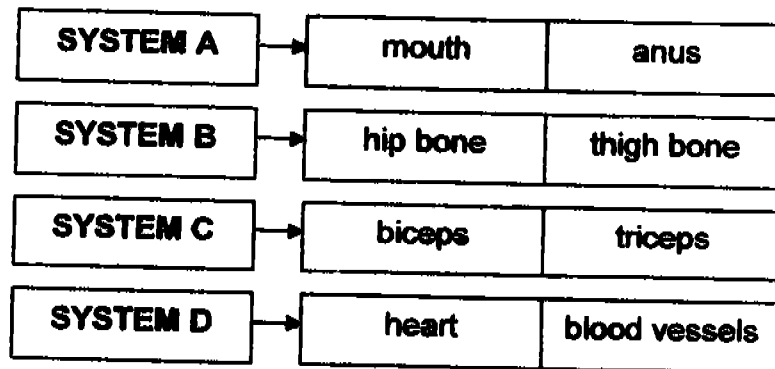
- (1) A
- (2) B
- (3) C
- (4) D

19. Which of the following statements are false?

- A : Animals respire only at night.
- B : Animals do not photosynthesise.
- C : Plants give out the most oxygen at night.
- D : Plants photosynthesise only in the day and respire only at night.

- (1) A and B
- (2) B and C
- (3) A, B and C
- (4) A, C and D

20. Study the 4 different systems below.



Which one of the systems above indicates the muscular system of a human body?

- (1) System A
- (2) System B
- (3) System C
- (4) System D

21. Which one of the following systems has similar function as that of the framework of an umbrella?

- (1) Skeletal System
- (2) Muscular System
- (3) Circulatory System
- (4) Respiratory System

22. Which of the following facts about bones are true?

Bones _____.

- A : are hard
- B : are elastic
- C : can be bent
- D : cannot move by themselves

- (1) A and B
- (2) B and C
- (3) C and D
- (4) A and D

23. The table below shows Anne's number of heartbeats in one minute when she is carrying out different activities. Which one of the following heartbeats is most likely to be wrongly recorded?

	Activity	Number of heartbeats in one minute
(1)	Sleeping	70
(2)	Walking	87
(3)	Running	102
(4)	Reading	120

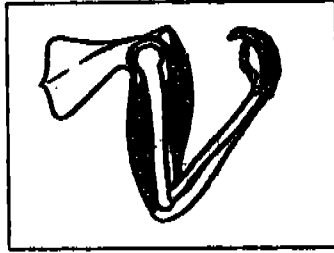
24. Muscles are found in our _____.

- A : heart
- B : gullet
- C : stomach

- (1) A only
- (2) A and B
- (3) A and C
- (4) A, B and C

56

25. What happen to our biceps when we bend our arm?



- (1) They relax and become longer.
- (2) They relax and become shorter.
- (3) They contract and become softer.
- (4) They contract and become harder.

26. Four girls have the following items for lunch.
Whose food will be digested most easily?

	Name of Pupils	Types of Food
(1)	Joan	chicken rice
(2)	Nicole	fried noodle
(3)	Sandra	porridge
(4)	Clarissa	hamburger

27. Which one of the following statements is false about what happens to the food we eat?

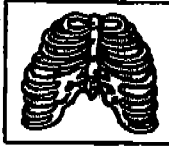
- (1) Digestive juices help to digest food.
- (2) The food is first digested in the mouth.
- (3) All the food that we eat is absorbed by the body.
- (4) The food that cannot be digested is removed from the body.

28. When someone chokes while eating, it means _____.

- (1) his stomach is small
- (2) the food has entered his gullet
- (3) the food has entered his windpipe
- (4) no more food can be digested anymore

57

29. The diagram below shows the rib cage.



Which of the following statements about the rib cage are true?

- A : It gives shape to our body.
- B : It is connected to the backbone.
- C : It is made of many curved bones.
- D : It protects our stomach and intestines.

- (1) A and B
- (2) C and D
- (3) A, B and C
- (4) A, C and D

30. David is kicking a ball into the goal post. The _____ in his legs helps him to do the work.

- A : joints
- B : bones
- C : muscles

- (1) A and B
- (2) B and C
- (3) A and C
- (4) A, B and C

METHODIST GIRLS' SCHOOL (PRIMARY)
SEMESTRAL ASSESSMENT 2 - 2005
PRIMARY 3
SCIENCE

BOOKLET B

Name : _____ ()

Class : Primary 3.

Date : _____

Part	Maximum Marks	Marks Obtained
A	60	
B	40	
Total Marks	100	

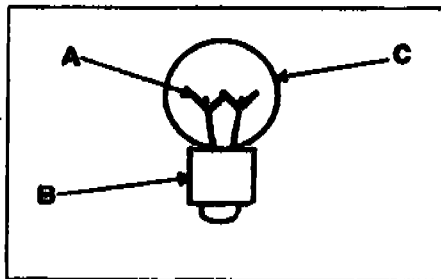
Parent's Signature : _____

59

Section B : (40 marks)

Write the answers in the blanks provided.

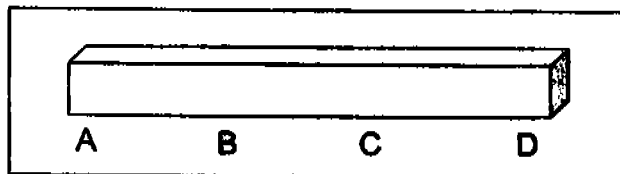
31. The picture below shows a light bulb.



(a) Which part of the bulb is made of glass? (1m)

(b) Why is glass needed to make that part? (1m)

32. Jennifer put some paper clips, one at a time, at different positions of a bar magnet as shown in the diagram below.

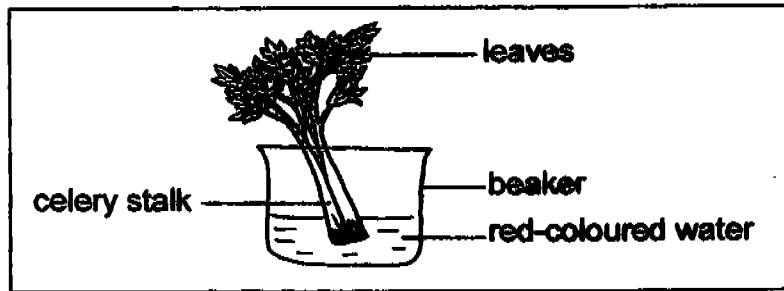


She then counted and recorded the number of paper clips that the magnet could attract at different positions.

(a) At which two positions would the most number of paper clips be recorded? (1m)

(b) When a magnet is freely suspended, which direction will it rest at? (1m)

33. A cut celery stalk was put into a beaker of red-coloured water as shown in the diagram below.



- (a) What happened to the leaves after a week? (1m)

- (b) What is the function of the stem in the experiment above? (1m)

34. Candy was studying the characteristics of a particular animal. She made notes about the animal based on her observations.

- It lays eggs.
- It has a beak.
- It has a pair of wings.

- (a) Based on her observations, which group of animals do you think this animal belongs to? (1m)

- (b) What kind of outer covering do you think this animal has? (1m)

- (c) How many stages of life cycle do you think this animal has? (1m)

35. The account below is an extract from Brenda's diary.

Date	Problems Encountered
1 st August	Suddenly my heart was beating too fast. I needed help.
9 th August	I had food poisoning.
12 th August	I had breathing difficulty due to asthma.
19 th August	I had a game of badminton and my arms were aching.
28 th August	I fell down and broke my wrist.

What are the systems in Brenda's body that are involved in each of the problem above?

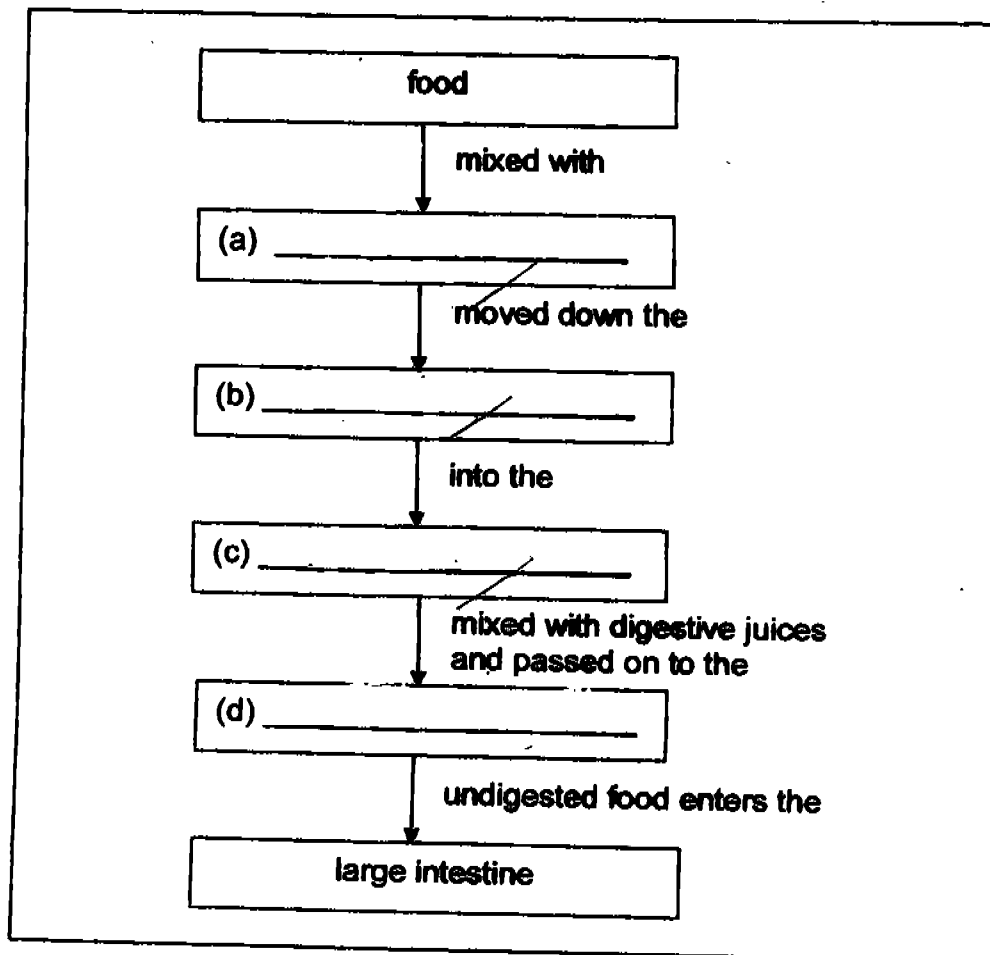
Write in the table below. (The first one is done for you.)

(2m)

	Date	Systems Involved
(e.g)	1 st August	Circulatory System
(a)	9 th August	
(b)	12 th August	
(c)	19 th August	
(d)	28 th August	

36. Complete the flow chart below using the words given in the box. (2m)

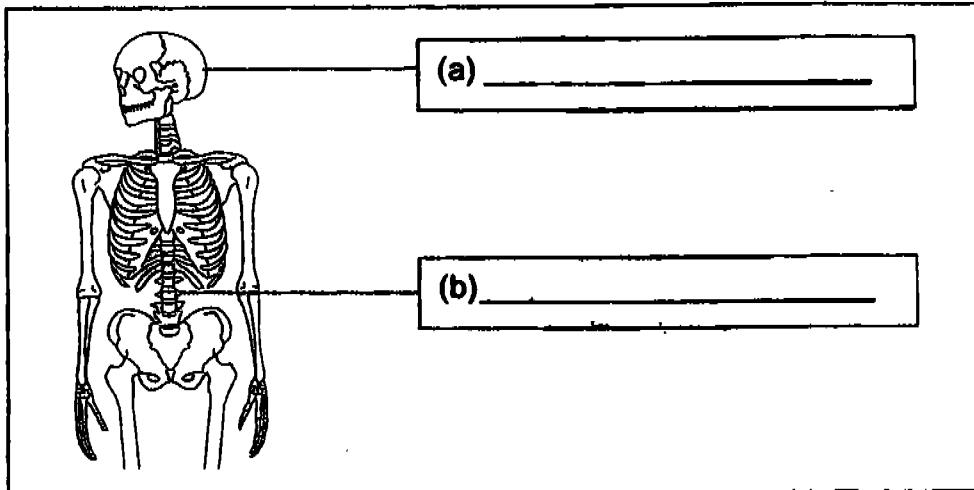
liver gullet	stomach small intestine	saliva tongue
-----------------	----------------------------	------------------



(e) What is the function of the digestive system in our body? (1m)

It _____ food into simpler substances.

37. Name the bones in the skeleton that are marked (a) and (b). (1m)



(c) Give two functions of the skeleton. (2m)

(i) _____

(ii) _____

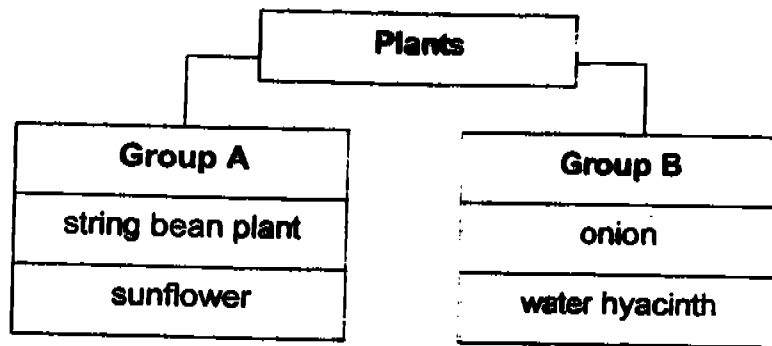
(d) Name the place where two or more bones are connected. (1m)

38. Fill in the blanks with the appropriate words from the box. (3m)

deer	moth	crocodile
beetle	whale	chicken

2 stages of life cycle	3 stages of life cycle	4 stages of life cycle

39. Study the classification table below.



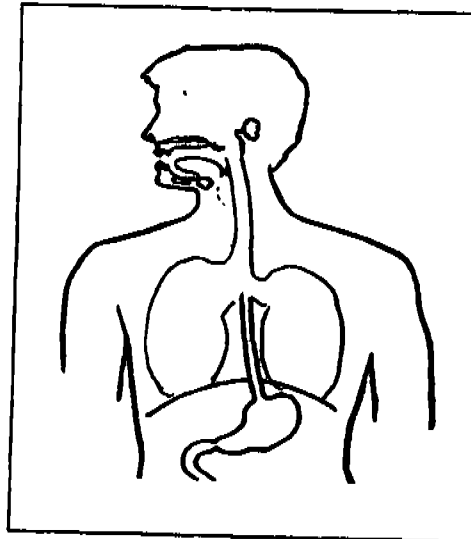
(a) How do the plants in Group A and Group B reproduce? (2m)

Group A reproduce from _____

Group B reproduce from _____

(b) Give another plant that can be placed under Group B. (1m)

40. (a) In the diagram below, colour the respiratory system blue. (1m)

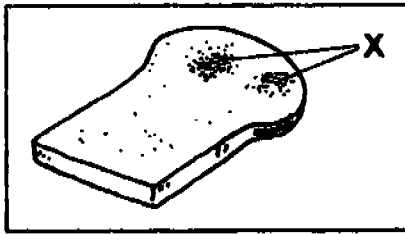


(b) Name two organs that make up the respiratory system in the body. (2m)

_____ and _____

65

41. Cindy wanted to eat some bread. As she looked at the bread, she found some organism marked X, growing on the bread as shown in the diagram below.

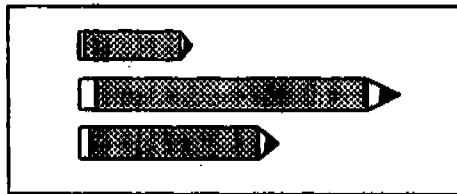


- (a) What is the organism growing on the bread marked X? (1m)
-

- (b) How does this organism reproduce? (1m)
-

- (c) Name another organism which reproduces in the same way. (1m)
-

42. The pencils shown below are different in length.



- (a) How can you tell that the pencils are different in length? (1m)

Sense used: _____

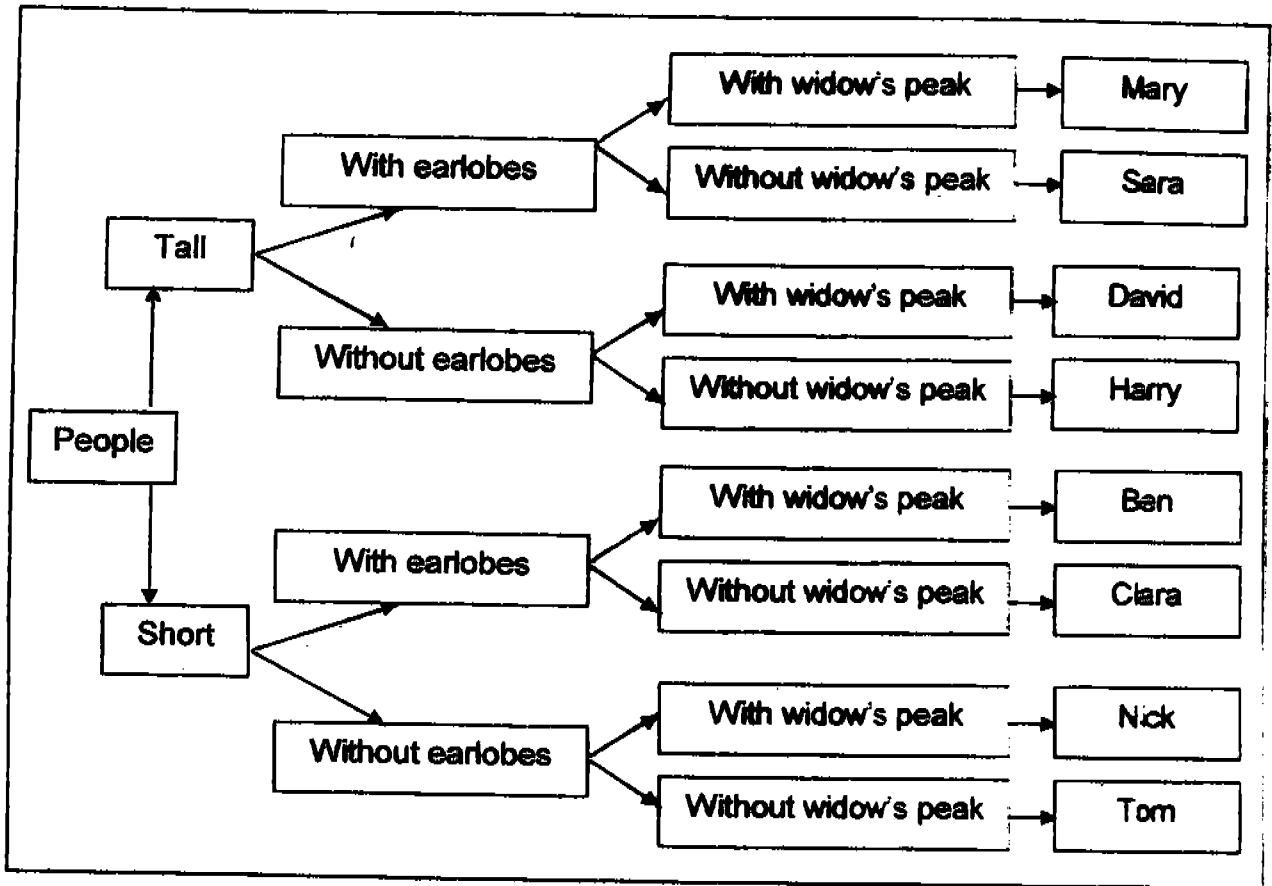
Organ used: _____

- (b) If a person is blind, how can he tell the difference in length? (1m)

Sense used: _____

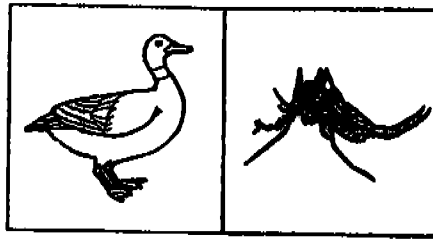
Organ used: _____

43. Study the flow chart below and fill in the blanks in the next table. (2m)



	Person	Description
(a)		A short boy without earlobes with widow's peak.
(b)		A short girl with earlobes without widow's peak.
(c)		A tall girl with earlobes with widow's peak.
(d)		A tall boy without earlobes without widow's peak.

44. The diagrams show a duck and a mosquito.



(a) Draw the life cycles of the duck and the mosquito in the boxes below. (2m)

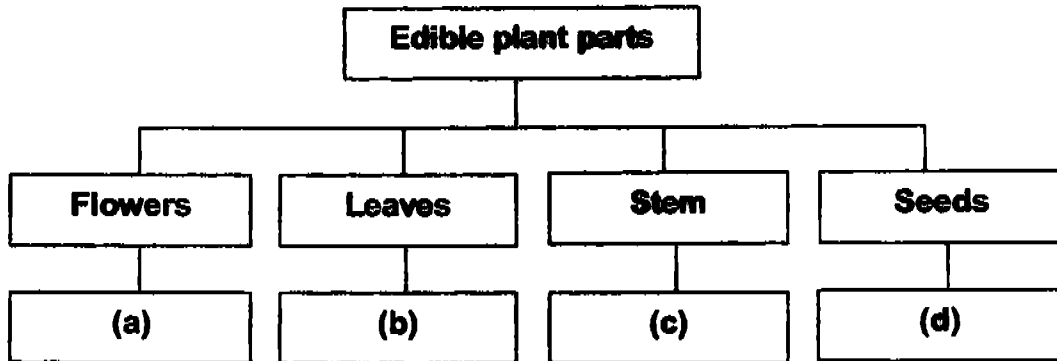
Life cycle of a duck	Life cycle of a mosquito

(b) State one difference and one similarity between the life cycle of a duck and a mosquito. (2m)

Difference : _____

Similarity : _____

45. Classify the following plants according to their edible plant parts. (2m)



- (a) _____
- (b) _____
- (c) _____
- (d) _____

End of Paper
Please check through your work!

Methodist Girls Primary School
Primary 3 Science SA2 Exams (2005)

Exam Script

Answer Sheets

Q1	Q2	Q3	Q4	Q5	Q6	Q7	Q8	Q9	Q10
3	3	2	4	2	4	4	3	2	2
Q11	Q12	Q13	Q14	Q15	Q16	Q17	Q18	Q19	Q20
1	3	4	2	4	4	1	3	4	3
Q21	Q22	Q23	Q24	Q25	Q26	Q27	Q28	Q29	Q30
1	4	4	2	4	3	3	3	3	4

- 31a. C
 31b. It is transparent and light can shine through.
- 32a. A and D
 32b. It will rest at a North-South direction.
- 33a. The leaves will turn red.
 33b. To transport water to all part of the plant.
- 34a. Birds
 34b. Feathers
 34c. Three stages
- 35a. Digestive system.
 35b. Respiratory system
 35c. Muscular system
 35d. Skeletal system
- 36a. saliva
 36b. gullet
 36c. stomach
 36d. small intestine
 36e. break down

- 37a. Skull
 37b. backbone
 37c. (i) protect our inner organs
 (ii) give our body shape
 37d. Joints

38.

deer	chicken	beetle
whale	crocodile	moth

- 39a. seeds bulbs
 39b. garlic

40a.

40b. Lungs and nose

41a. Bread mould

41b. By spores

41c. mushrooms

42a. Sense of light

42b. Sense of touch

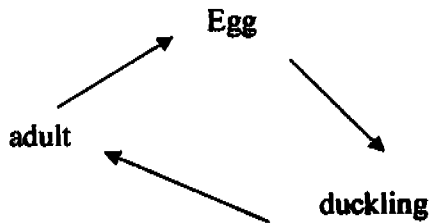
43a. Nick

43b. Clara

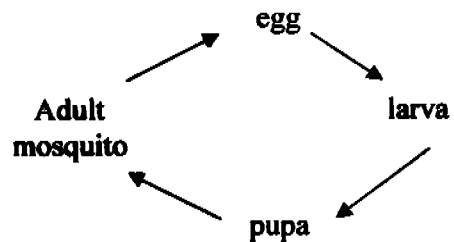
43c. Mary

43d. Harry

44a.



Life cycle of a duck



Life cycle of a mosquito

- 44b. The duck has three stages in its life cycle but the mosquito has four stages in its life cycle.
 Both the duck and the mosquito lay eggs.

- 45a. broccoli
 45b. lettuce
 45c. sugar cane
 45d. groundnut