



AI TONG SCHOOL

SIA 2

2004 SEMESTRAL ASSESSMENT (2)

PRIMARY THREE SCIENCE

DURATION : 1hr 30 min

DATE: 1 NOVEMBER 2004

INSTRUCTIONS

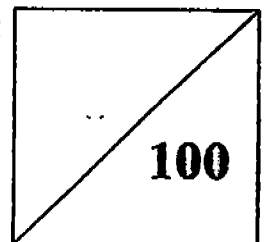
Do not open the booklet until you are told to do so.

Follow all instructions.

Answer all questions.

Name : _____ ()

Marks :



Class : Primary _____

Parent's Signature : _____

Date : _____

Section A (25 x 2 marks)

Choose the correct answer and shade in the OAS provided.

1. Living things need _____ to stay alive.

- (1) sunlight, food and air
- (2) shelter, water and air
- (3) money, food and air
- (4) food, water and air

2. One of the following statements is **not true**. Which one is it?

- (1) A toy car cannot move by itself.
- (2) A plastic container is a non-living thing.
- (3) All birds have beaks, wings and can lay eggs.
- (4) All animals reproduce by giving birth to their young.

3. The things in **one** of these groups are classified according to their similarities. Which group is classified **correctly**?

- (1) table, pen, elephant
- (2) radio, tree, computer
- (3) dress, blouse, T-shirt
- (4) sharpener, pencil, crocodile

4. All the animals given below have a similar outer covering except the _____.

- (1) horse
- (2) prawn
- (3) oyster
- (4) crab

5.

(1)	(2)	(3)	(4)
eagle	panther	butterfly	shark
sparrow	goat	ant	salmon

Study the table above carefully. In which group will you put the animal 'cow'?

6. Study the table below carefully.

<u>Group A</u>	<u>Group B</u>
Longan	Jackfruit
Strawberry	Pineapple
Grape	Watermelon

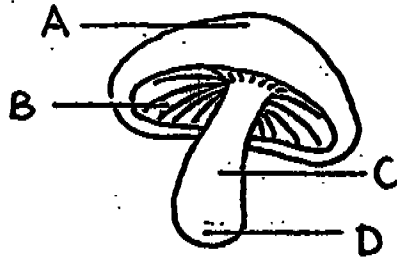
These fruits are grouped according to their _____.

- (1) size
- (2) shape
- (3) taste
- (4) colour

7. Jenny felt hungry and took a slice of bread out of the plastic bag. When she was about to spread some butter on it, she saw some dark patches on the bread. What are those dark patches? They are _____.

- (1) germs
- (2) bacteria
- (3) mould
- (4) toadstools

8. Look at the picture of a mushroom below.
At which part of the mushroom can you find its spores?

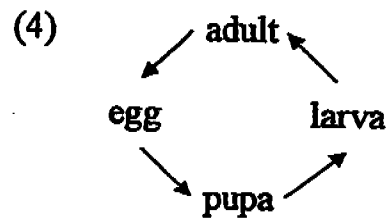
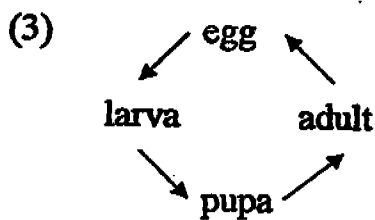
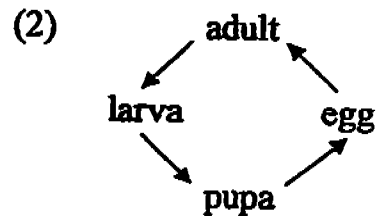
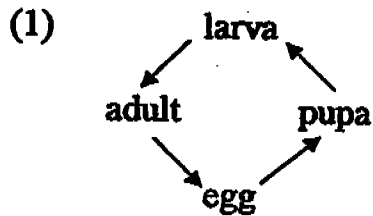


- (1) A
(2) B
(3) C
(4) D
9. Which one of these objects is made from a material which was once alive?
- (1) A paper clip
(2) A glass jar
(3) A plastic bottle
(4) A leather bag
10. The lenses of a pair of spectacles are made of glass or plastic because glass and plastic are _____.
- (1) thick
(2) breakable
(3) flexible
(4) transparent

11. Which one of the following materials is man-made?

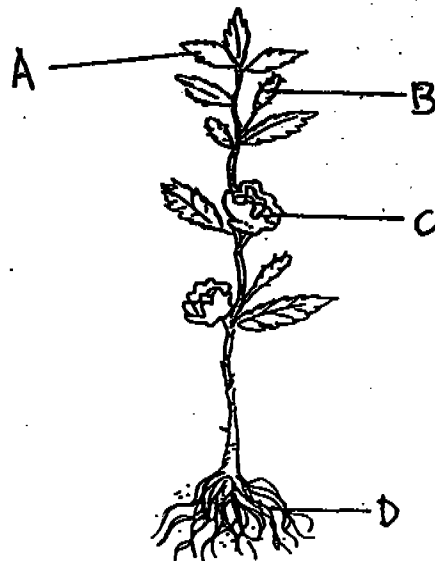
- (1) nylon
- (2) silk
- (3) wool
- (4) cotton

12. Which one of the following arrangements shows the correct order of the stages in the life cycle of a beetle?



13. Which part of the green plant helps it to make food?

- (1) A
- (2) B
- (3) C
- (4) D

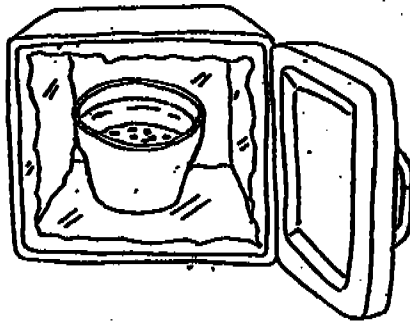


14. Some soil was placed into four flower pots, A, B, C and D. A few bean seeds were planted in each pot. The diagrams below show where each pot was placed.

In which of the pots would the seeds germinate?

(1)

In a freezer



wet soil

(2)

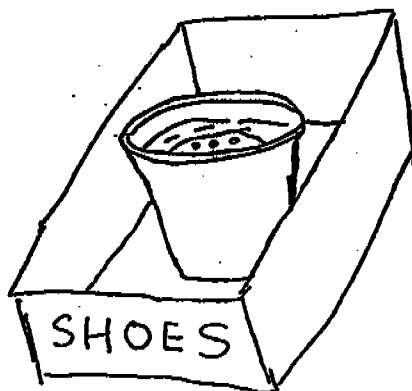
In the garden



wet soil

(3)

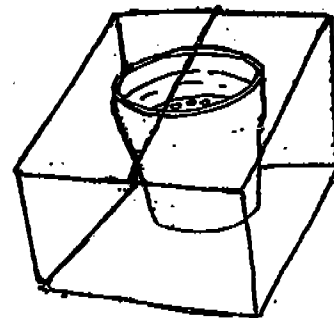
In an open box



dry soil

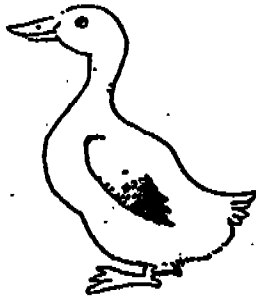
(4)

In a closed box

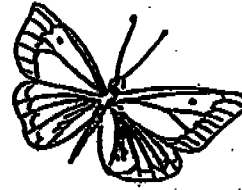


dry soil

15. Look at the two animals below.



duck



butterfly

Which one of the following statements about them is true?

- (1) They both have a beak.
- (2) They both lay eggs.
- (3) They both have six legs.
- (4) They both have 3 stages in their life cycles.

16. Study the classification table below.

Animals

<u>Group A</u> 3 3 stages	<u>Group B</u> 4 stages
dragonfly	mosquito
cockroach	beetle
X	Y

Which animals would you put in the places marked X and Y?

- (1) cat , bee
- (2) dog , housefly
- (3) chicken , butterfly
- (4) hamster , grasshopper

17. Which of the following animals has been correctly matched with its young and the number of stages of growth in the table below?

Animal	Young	Number of stages of growth
(1) Frog	Tadpole	2
(2) Chicken	Chick	4
(3) Butterfly	Cocoon	4
(4) Cockroach	Nymph	3

18. Mabel wanted to make a list of things that are attracted to a magnet. Which of these things can be added to her list?

- (A) Steel ruler
- (B) Paper clip
- (C) Aluminium foil
- (D) Copper coin
- (E) Iron nail

- (1) A, B and C only
- (2) A, B and E only
- (3) A, C, D and E only
- (4) B, C, D and E only

19. Tom found that his magnet attracted a brown paper package left on his father's table. He opened it and found some iron nails inside. This shows that the attraction of a magnet _____.
- (1) passes through his father's table
 - (2) detects any object made of metal
 - (3) passes through the brown paper wrapper
 - (4) attracts both the iron nails and paper wrapper
20. "Ouch, the cactus just pricked me!" cried Lynne. Lynne used her sense of _____.
- (1) sight
 - (2) smell
 - (3) hearing
 - (4) touch
21. Which one of the following groups of things tastes sour?
- (1) Vinegar and lime
 - (2) Pepper and lime
 - (3) Lemon and chocolate
 - (4) Honey and grape
22. Justina is listening to music while reading a story book. How many sense organs is she using?
- (1) One
 - (2) Two
 - (3) Three
 - (4) Four

23. Derek does not like the taste of medicine because it tastes bitter. He is using his _____ to taste.

- (1) lips
- (2) mouth
- (3) teeth
- (4) tongue

24. The skull is important because it _____.

- (1) gives our body shape
- (2) keeps our body upright
- (3) protects our brain
- (4) protects our muscles

25. Our _____ system starts with our nose.

- (1) circulatory
- (2) digestive
- (3) respiratory
- (4) skeletal

Section B (10 x 2 marks)

Fill in the blanks with the following helping words. You may only use each word once.

diversity	waterproof	penguin	beetle
butterfly	fungi	grasshopper	ferns
flexible	organs	materials	joint
muscles	respond	characteristics	

26. The variety of living and non-living things around us is called _____.

27. If you touch the leaves of a mimosa plant, they will _____ by closing or folding up.

28. A _____ has wings but cannot fly.

29. Mosses and _____ are example of non-flowering plants.

30. For things to be useful, suitable _____ must be chosen to make them.

31. It is possible to coil up a long piece of rope because it is _____.

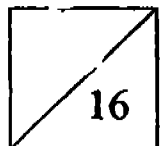
32. The mealworm will grow into a _____.

33. The babies of animals will inherit the _____ of their parents.
34. The cockroach is similar to the _____, because it has 3 stages in its life cycle.
35. The skeletal system supports our body, gives it shape and protects the delicate _____ in the body.

Section C (5 x 2 marks)

Read the following statements and write 'True' for the correct statements and 'False' for the incorrect ones.

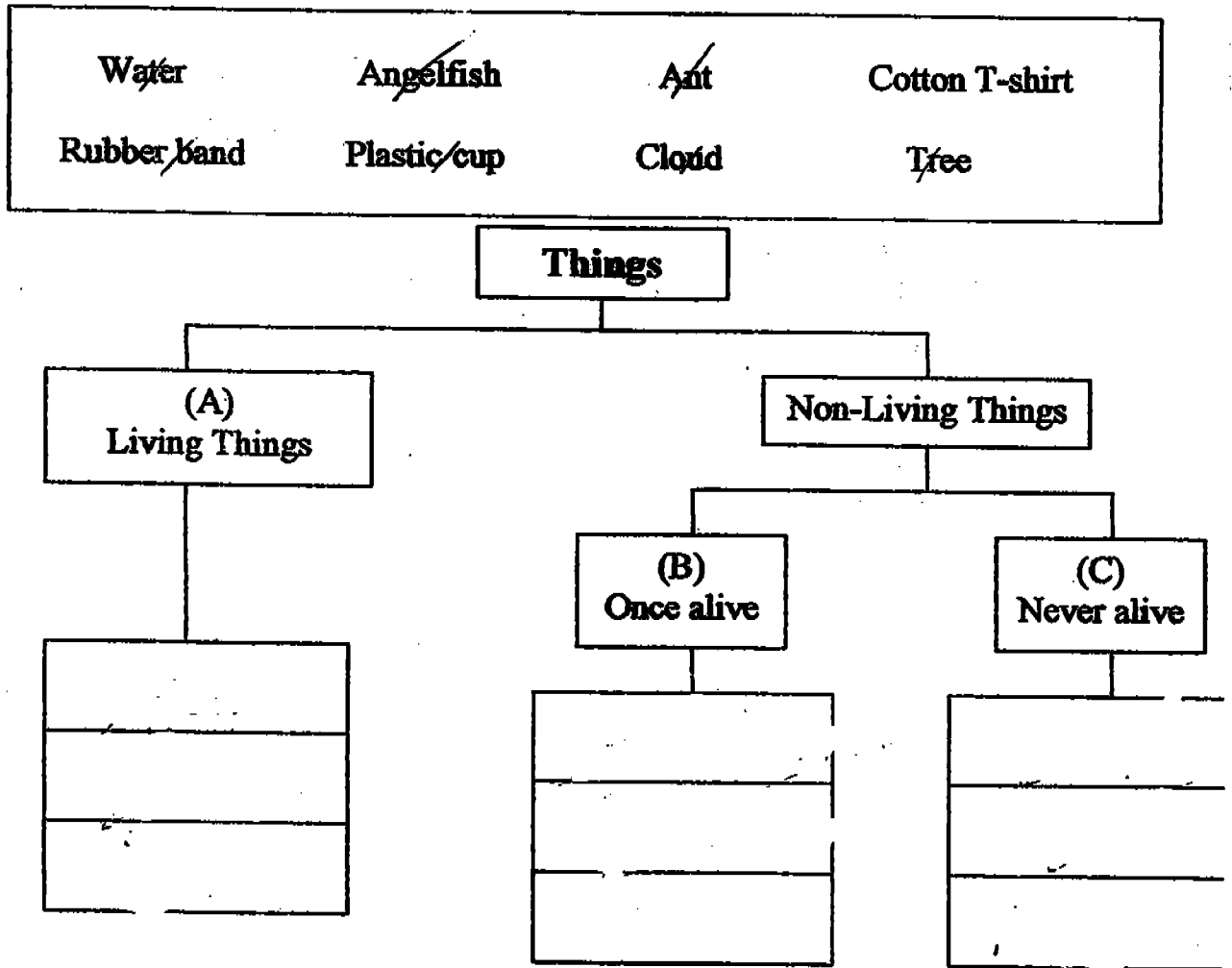
36. The seedling of a plant gets its food from the seed before the shoot appears.
37. The magnet's attraction is the strongest at its poles.
38. A joint is a place where two muscles meet.
39. In order for us to move, our bones and muscles must work together.
40. The process of digestion is completed in the large intestine.



Section D (20 marks)

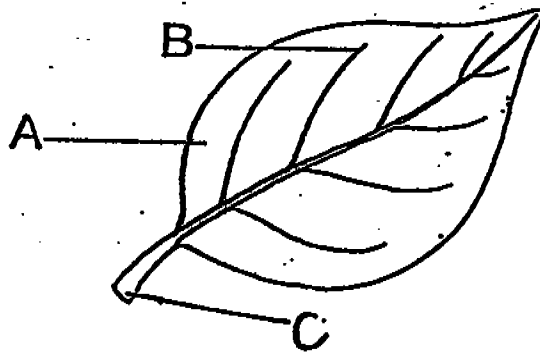
Read the following questions and answer them accordingly.

41. (a) Classify the following things under the correct heading.
(4 marks)



4

42. (a) Name the parts of the leaf shown below. (3 marks)

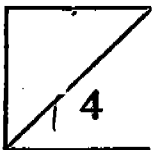


Part A : _____

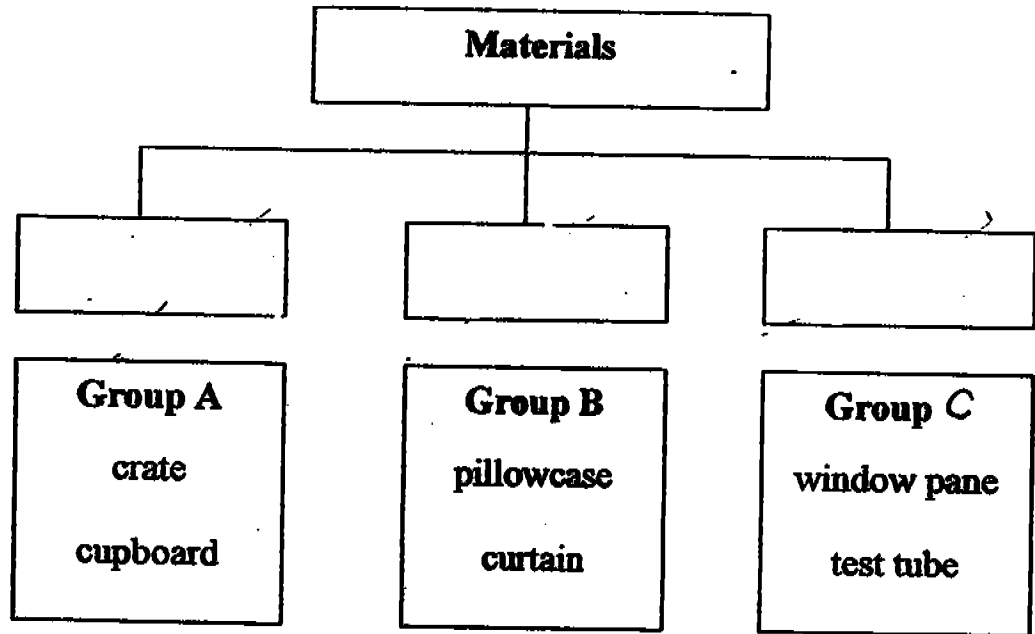
Part B : _____

Part C : _____

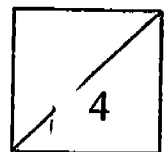
(b) Which (one of the above) parts join the leaf to the plant? (1 mark)



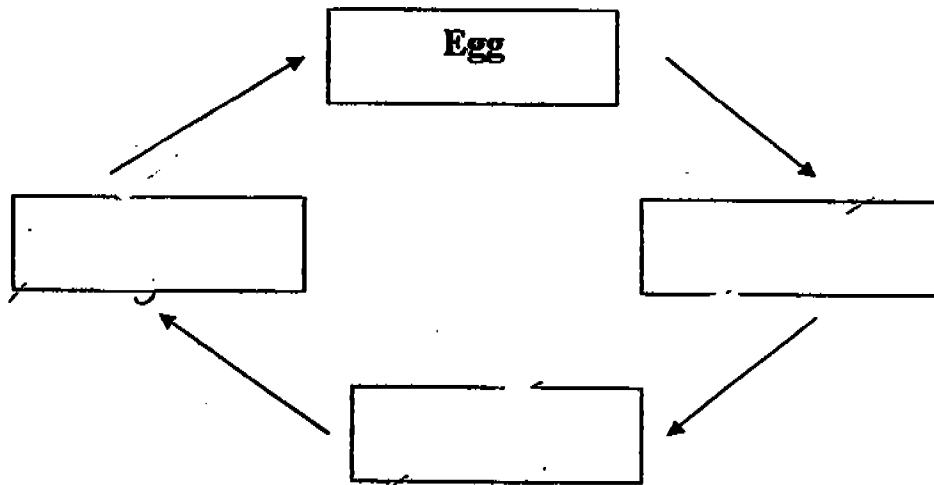
43.



- (a) In the boxes provided, name the material from which each group of objects is made.
(3marks)
- (b) Give an example of another object made of the same material as the objects in Group B.
(1mark)
-

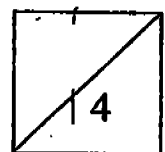


44. The diagram below shows the life cycle of a butterfly.

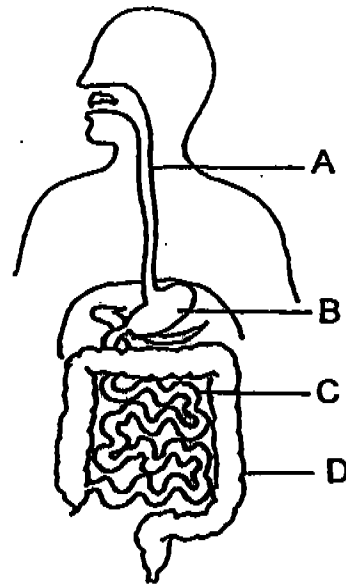


(a) Fill in the correct words in the boxes to complete the diagram. (3 marks)

(b) Name another animal with the same number of stages in its life-cycle. (1 mark)



45.



(a) Name the following parts of the digestive system.

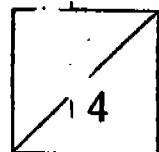
Part A - _____ (1 mark)

Part B - _____ (1 mark)

(b) What is secreted at Parts B and C to help with the digestion of food?
(1 mark)

(c) What happens at Part D of the digestive system?
(1 mark)

End of Paper



AI TONG SCHOOL
 2004 SEMESTRAL ASSESSMENT 2
 PRIMARY THREE SCIENCE

SIAZ

- | | | | |
|-------|---------------------|--|-------------|
| 1) 4 | 26) diversity | 44) a) | |
| 2) 4 | 27) respond | adult | larva |
| 3) 3 | 28) penguin | butterfly | |
| 4) 1 | 29) ferns | | pupa |
| 5) 2 | 30) materials | b) Beetle | |
| 6) 1 | 31) flexible | 45) a) gullet | |
| 7) 3 | 32) beetle | stomach | |
| 8) 2 | 33) characteristics | b) Digestive juices | |
| 9) 4 | 34) grasshopper | c) Most of the water
are taken out. | |
| 10) 4 | 35) organs | | |
| 11) 1 | 36) True | | |
| 12) 3 | 37) True | | |
| 13) 1 | 38) False | | |
| 14) 2 | 39) True | | |
| 15) 2 | 40) False | | |
| 16) 3 | 41) Angelfish | Rubber band | Water |
| 17) 4 | Tree | Cotton T-shirt | Cloud |
| | Ant | | Plastic cup |
| 18) 2 | 42) leaf blade | | |
| 19) 3 | veins | | |
| 20) 4 | stalk | | |
| 21) 1 | b) Stalk | | |
| 22) 2 | 43) Wood | cloth | glass |
| 23) 4 | b) T-shirt | | |
| 24) 3 | | | |
| 25) 3 | | | |