

# Tao Nan School

## Primary 3 Science Mid-Year Examination 2005

Name : \_\_\_\_\_ ( )

Date : 12th May 2005

Class : P3 \_\_\_\_\_

Duration: 1 h 15 min

Parent's Signature : \_\_\_\_\_

Marks : \_\_\_\_\_ / 100

### Section A ( 30 X 2 marks )

For each question from 1 to 30, four options are given. One of them is the correct answer. Make your choice ( 1, 2, 3 or 4 ). Shade the correct oval ( 1, 2, 3 or 4 ) on the Optical Answer Sheet.

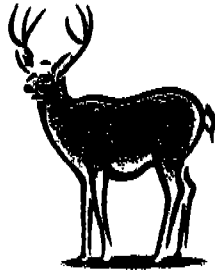
1. Which of the following about a chicken wing is true?

- ( 1 ) It is a living thing.
- ( 2 ) It is a non-living thing that was once alive.
- ( 3 ) It is a non-living thing that was never alive.
- ( 4 ) It is a non-living thing that is made from things that were once alive.

2. Which of the following animals is matched to where it lives?

	Animal	Where it lives
( 1 )	Bee	Hive
( 2 )	Shark	Pond
( 3 )	Elephant	Cave
( 4 )	Rabbit	Tree

3. Study the two animals below carefully. In what way(s) is/are they similar?



Deer



Bee

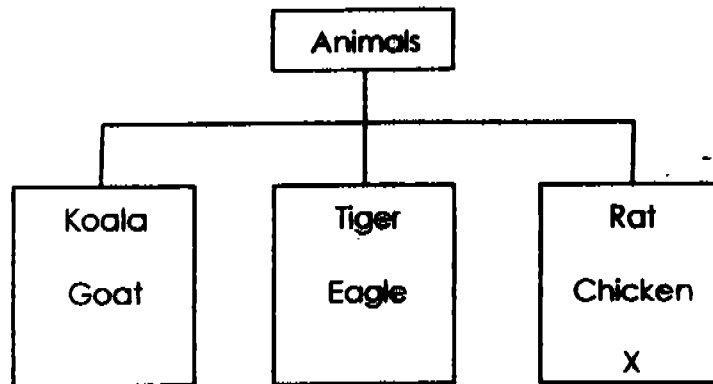
- A They have legs.
- B They have a pair of horns.
- C They have three main body parts.

- (1) A only
- (2) B only
- (3) A and B only
- (4) A and C only

4. Which of the following animals is **incorrectly** matched to its outer body covering?

	Animal	Outer Body Covering
(1)	Whale	Hair
(2)	Cobra	Scales
(3)	Peacock	Hair
(4)	Tortoise	Shell

5. The classification chart below shows how some animals are classified according to the food they eat.



Which of the following animals can X represent?

- (1) Duck
- (2) Frog
- (3) Squirrel
- (4) Elephant

6. Which part of the wasp is labelled correctly?



- (1) Leg
- (2) Wing
- (3) Thorax
- (4) Abdomen

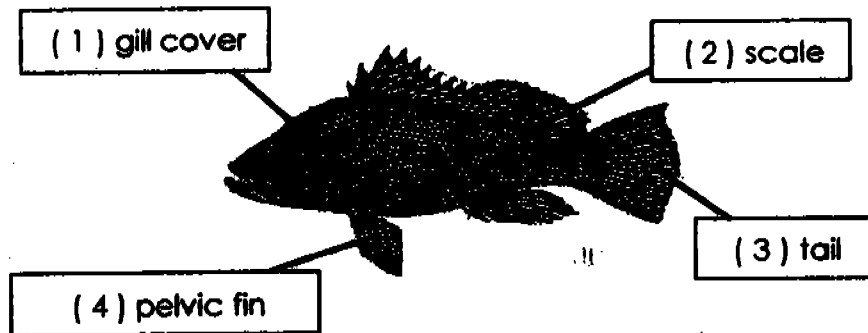
7. Which of the following animals has wings changed into flippers?

- (1) Seal
- (2) Turtle
- (3) Dolphin
- (4) Penguin

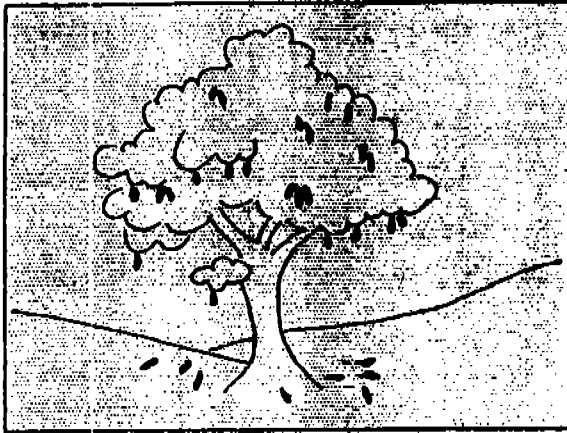
8. Which of the following is a mammal?

- (1) Seal
- (2) Frog
- (3) Guppy
- (4) Pigeon

9. Which part of the fish below protects its body?



10. Look at this picture of a mango tree in a school garden.



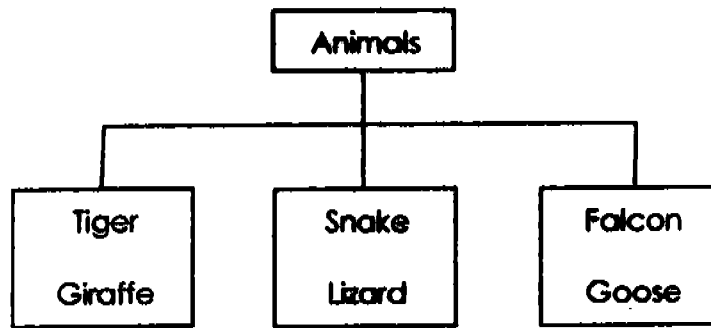
Read the statements below carefully. Which one you can be most sure is true just by looking at the picture?

- (1) The mangoes on the tree are ripe.
- (2) The mangoes on the ground are bad.
- (3) The wind has knocked some mangoes off the tree.
- (4) There are mangoes on the ground and on the tree.

11. Which of the following parts of a fish enables it to breathe in water?

- (1) Fins
- (2) Tail
- (3) Gills
- (4) Scales

12.



How are the animals in the classification chart above grouped?

- (1) The way they move.
- (2) Their outer body covering.
- (3) The type of food they eat.
- (4) Their sizes, shapes and colours.

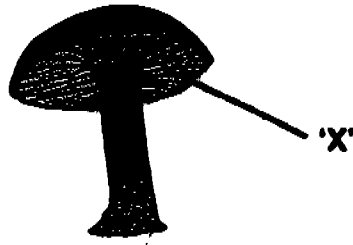
13. Which of the following can live both on land and in water?

- (1) Frog
- (2) Guppy
- (3) Parakeet
- (4) Earthworm

14. Which of the following statements about a platypus is true?

- (1) It is a bird.
- (2) It lays eggs.
- (3) It has scales.
- (4) It gives birth to young.

Study the picture of the mushroom below carefully. Use it to answer questions 15 to 17.



15. What is the part marked 'X' on the mushroom.

- ( 1 ) cap
- ( 2 ) gills
- ( 3 ) stalk
- ( 4 ) roots

16. What is the function of the spores in 'X'?

- ( 1 ) Breathing
- ( 2 ) Movement
- ( 3 ) Reproduction
- ( 4 ) Photosynthesis

17. How does a mushroom get its food?

- ( 1 ) It makes its own food.
- ( 2 ) It feeds on other plants.
- ( 3 ) It feeds on dead matter.
- ( 4 ) It feeds on other animals.

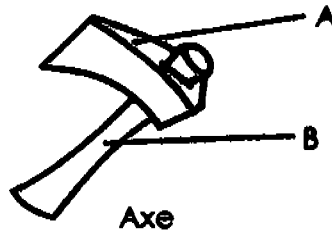
18. Which of the following crawls?

- (1) Eel
- (2) Snake
- (3) Seahorse
- (4) Cockroach

19. Which of the following statements about the crab and the prawn is true?

- (1) They are hairy.
- (2) They have shells.
- (3) They have eight legs.
- (4) They have a pair of claws.

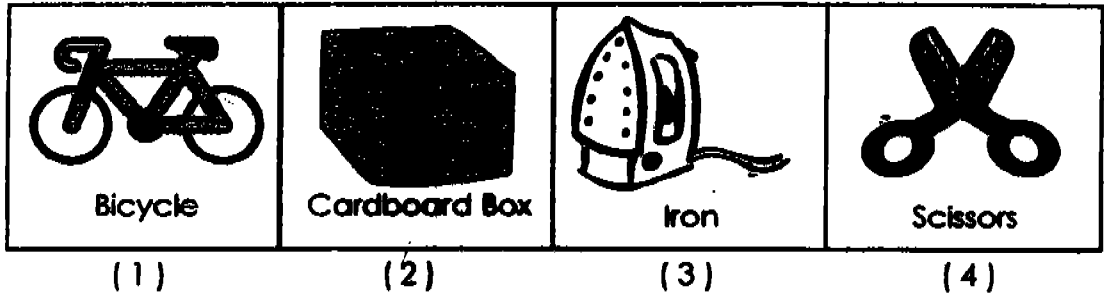
20. Study the diagram below carefully. What are the materials used to make A and B?



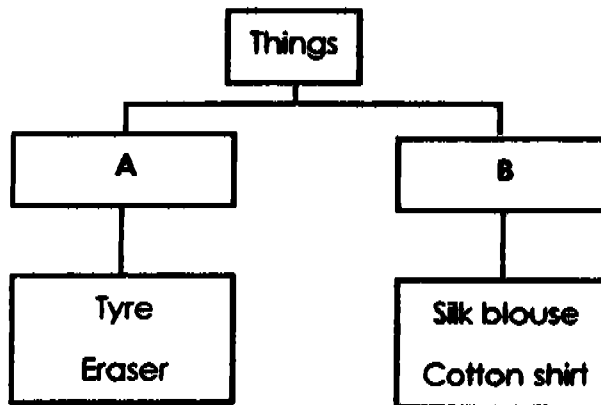
	Material A	Material B
(1)	Glass	Metal
(2)	Metal	Wood
(3)	Rubber	Aluminium
(4)	Plastic	Rubber



21. Which of the following is made using only one material?



22. Study the classification table below carefully.



Which of the following shows how the objects are grouped?

	A	B
(1)	Plastic	Cloth
(2)	Rubber	Plastic
(3)	Plastic	Rubber
(4)	Rubber	Cloth

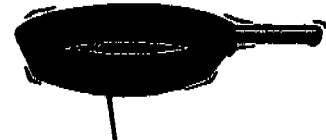
23. Ali wanted to find out where the materials for making the objects below came from. He searched his encyclopedia for the answer. He found out that the materials for making the objects are from



Clay pot



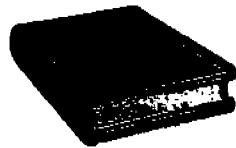
Spectacle lenses



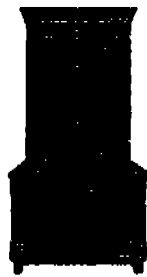
Frying pan

- (1) plants
- (2) animals
- (3) the ground
- (4) man-made materials

24. Study the objects below carefully.



Book



Cupboard

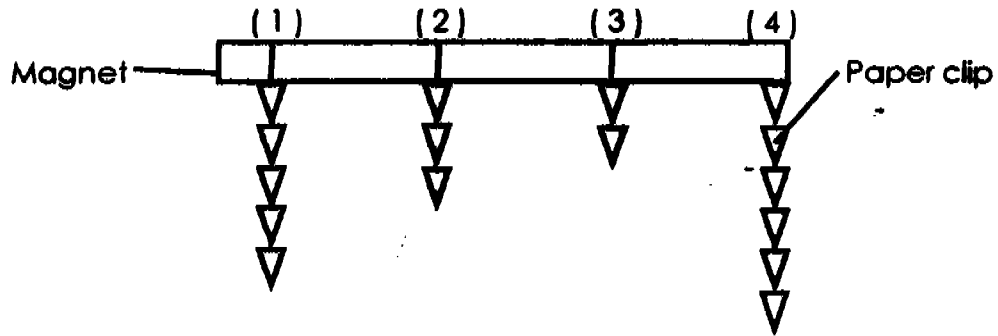


Newspaper

Identify a similarity between all the three objects?

- (1) They are paper-based products
- (2) They are wood-based products
- (3) They are plastic-based products
- (4) They are rubber-based products

25. The diagram below shows a bar magnet and some paper clips. Which part of the magnet has the strongest magnetic pull?



26. In an experiment with magnets, Mrs Su has to waste a lot of time removing the iron filings that have stuck onto the bar magnets at the end of her lesson.

What would you suggest that Mrs Su could do to prevent her students from getting the iron filings directly onto the bar magnets?

- (1) Wet the magnet.
- (2) Wrap each bar magnet with aluminium foil.
- (3) Smear a layer of oil on each of the magnets.
- (4) Sprinkle the iron filings some distance away from the magnets

27. Which of the following statements about magnets is true?

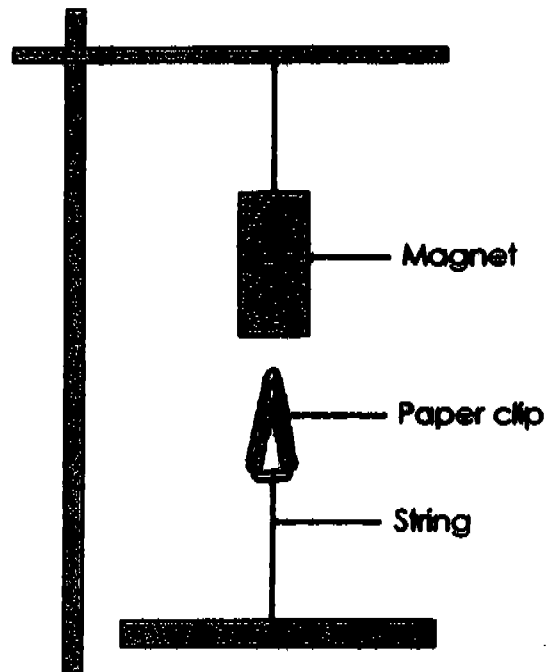
- (1) Like poles attract each other.
- (2) Unlike poles repel each other.
- (3) A magnet can attract all metals.
- (4) There are two poles on a magnet.

28. Which of the following make use of the property of magnets?

- A air-conditioner
- B refrigerator
- C pencil box
- D ball-point pen

- (1) A and D only
- (2) B and C only
- (3) A, B and C only
- (4) B, C and D only

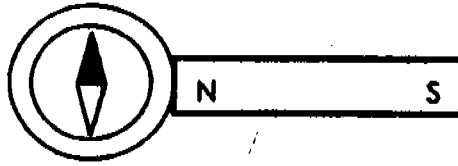
29. The setup below shows a paper clip suspended in the air by a magnet. What will happen if a piece of paper is placed between the magnet and the paper clip?



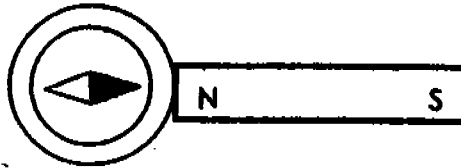
- ( 1 ) Nothing will happen.
- ( 2 ) The paper clip will fall.
- ( 3 ) The paper clip will attract the paper.
- ( 4 ) The paper will be attracted to the magnet.

30. Danny brings a strong bar magnet close to a compass. Which of the following is a possible observation after one minute?

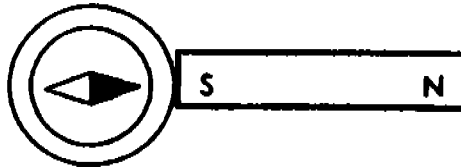
(1)



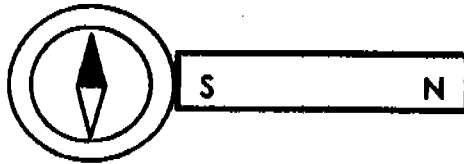
(2)



(3)



(4)



Name: \_\_\_\_\_ ( )

Class: P3 \_\_\_\_\_

**Section B (40 marks)**

**Write your answers in the blanks provided.**

31. Study the statements below carefully. Indicate whether each of the statement is True or False. Put a tick (✓) in the correct box. (4 marks)

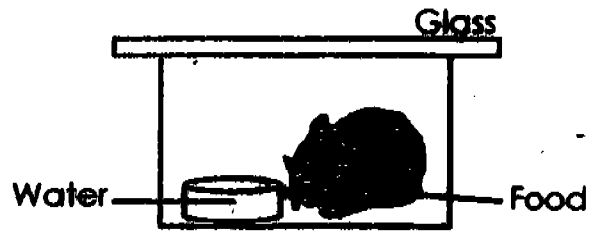
Statement	True	False
(a) Fungi can make their own food.		
(b) A wooden chair is made from something that was once alive.		
(c) A spinning top is a living-thing because it can move.		
(d) All fish hatch from eggs.		

32. Group the things in the box below into living and non-living things. (2 marks)

Tomato	Telephone	Coconut tree	File
--------	-----------	--------------	------

Living Things	Non-Living Things

33. Jack puts his hamster inside a tank and covers the top with a piece of glass as shown in the diagram below. He gives it food and water.



- (a) What will happen to the hamster after a week? (1 mark)

\_\_\_\_\_

- (b) Explain your answer in (a). (1 mark)

\_\_\_\_\_

\_\_\_\_\_

34. In the following situation, Mary and Peter each shows a characteristic that is special to living things. Identify the characteristics shown in each situation.

- (a) Mary blinked when she saw a sudden flash of light from a camera. (1 mark)

Living things \_\_\_\_\_

\_\_\_\_\_

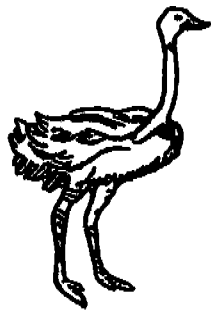
- (b) Peter found that he has grown too big for his clothes. (1 mark)

Living things \_\_\_\_\_

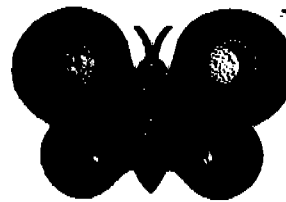
\_\_\_\_\_



35. Compare an ostrich and a butterfly. How are they similar and how are they different? Do not compare their size and shape. ( 4 marks )



Ostrich



Butterfly

How similar?

(a) \_\_\_\_\_  
(b) \_\_\_\_\_

How different  
with regards to

(c)(i) \_\_\_\_\_

the number  
of wings ?

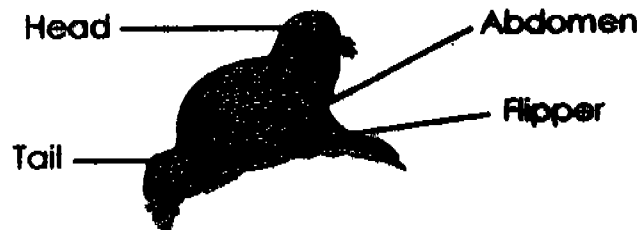
(c)(ii) \_\_\_\_\_

(d)(i) \_\_\_\_\_

the way  
it moves ?

(d)(ii) \_\_\_\_\_

36.



(a) Which part of the body does the seal use to move on land? (1 mark)

---

(b) State one way the seal can move. (1 mark)

---

37. Susan left her parrot on a branch in a large cage.

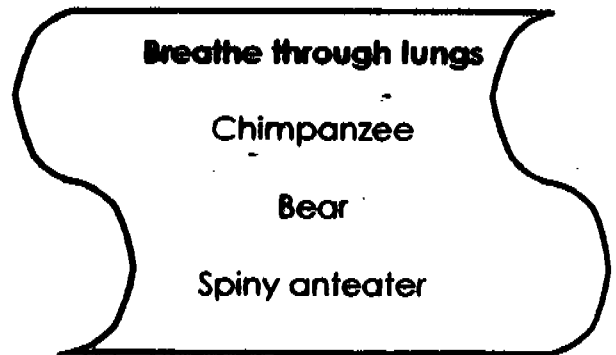
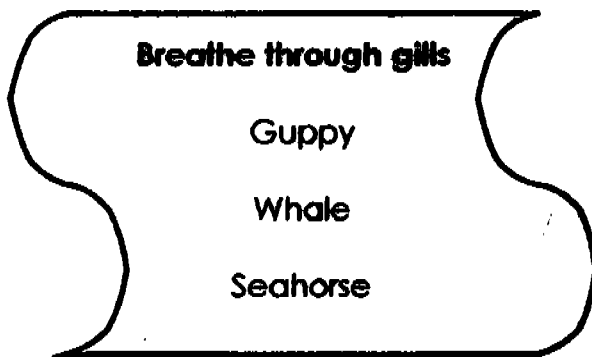


She gave it some mince meat and fresh water every day. A few days later, she found that it had died. The vet said it had died of hunger. How could that have happened? (2 marks)

---

---

38. Clifford classified the following animals into two groups. This is what he wrote:



(a) Which animal is placed in the **wrong** group? (1 mark)

---

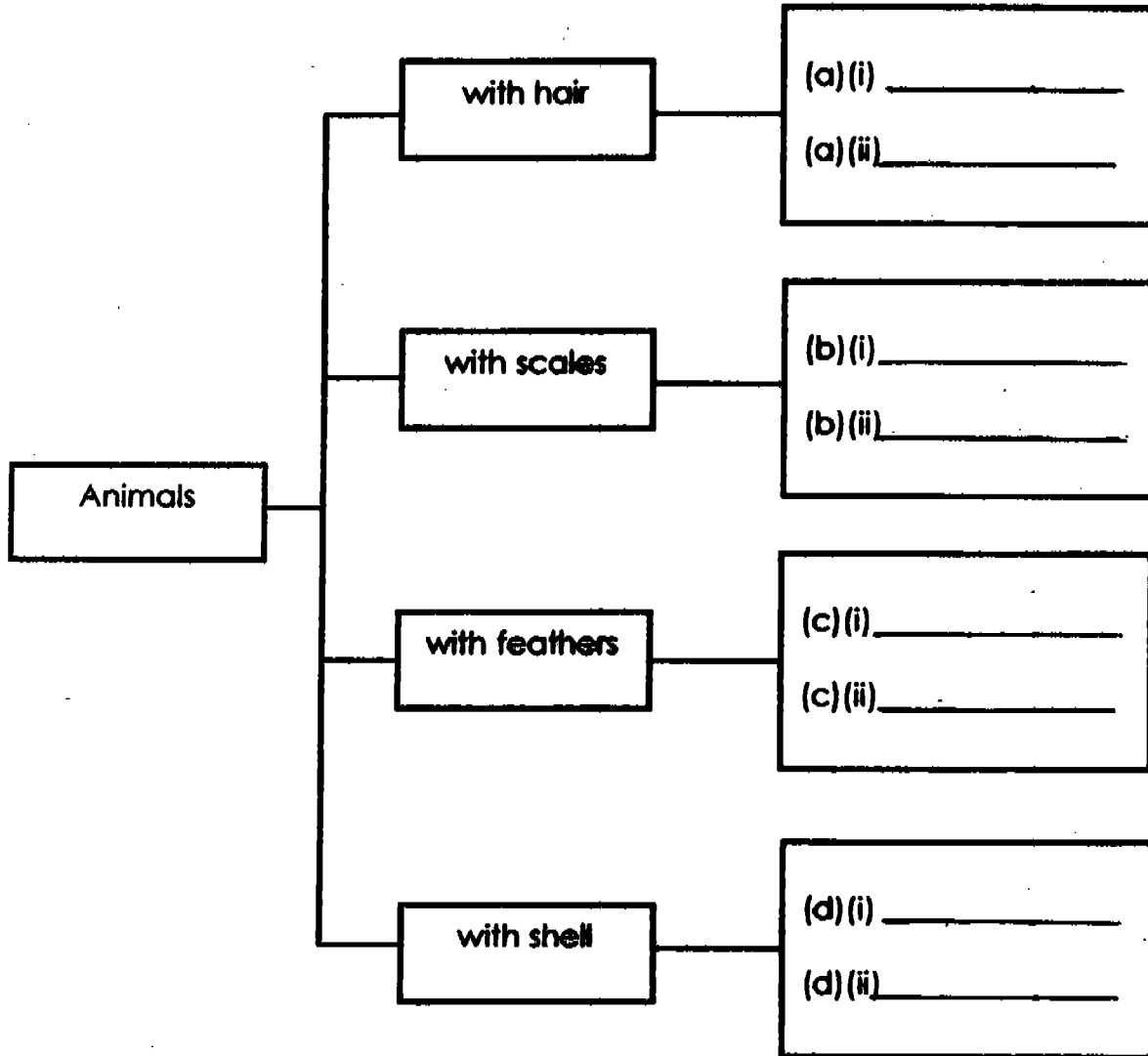
(b) Explain your answer in (a). (1 mark)

---

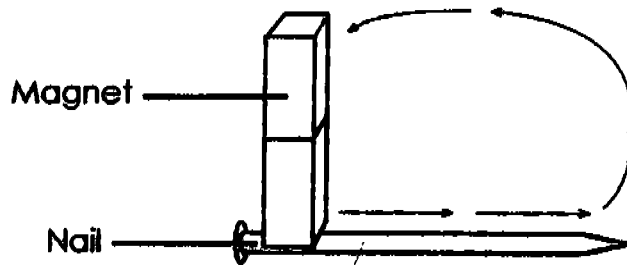
---

39. Different animals have different outer body covering. Classify the animals in the box below in the correct groups. ( 4 marks )

Oyster	Polar bear	Sailfish	Snail
Elephant	Penguin	Eagle	Monitor lizard



40. Study the picture below carefully.

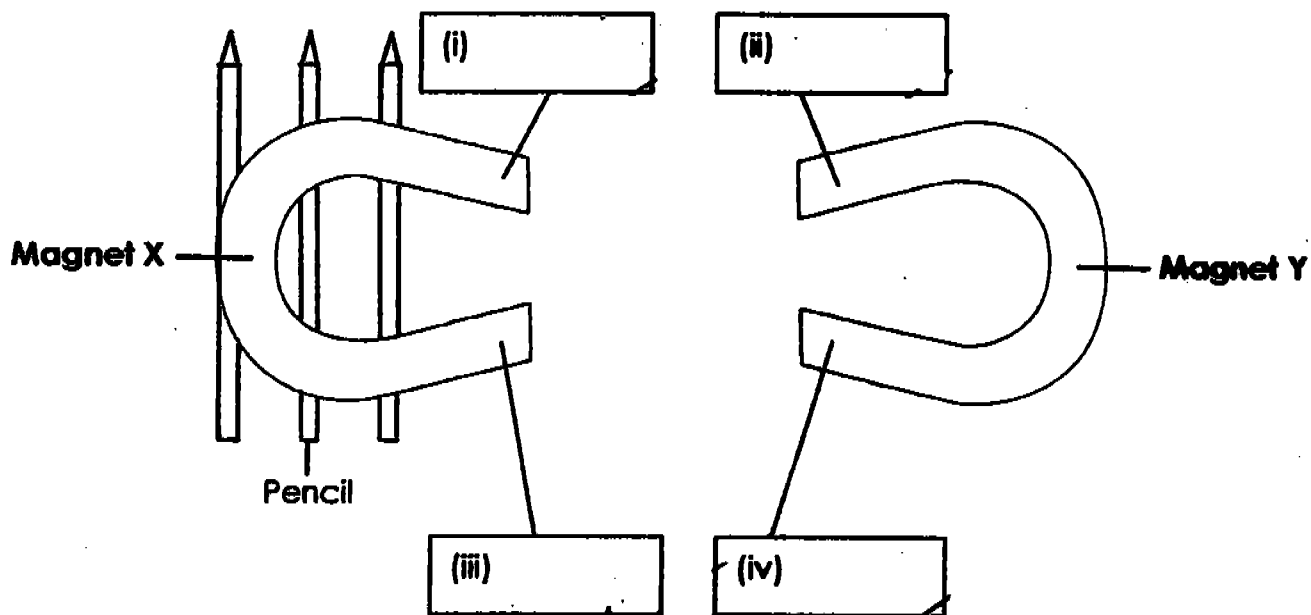


Then fill in the blanks with the correct words. (3 marks)

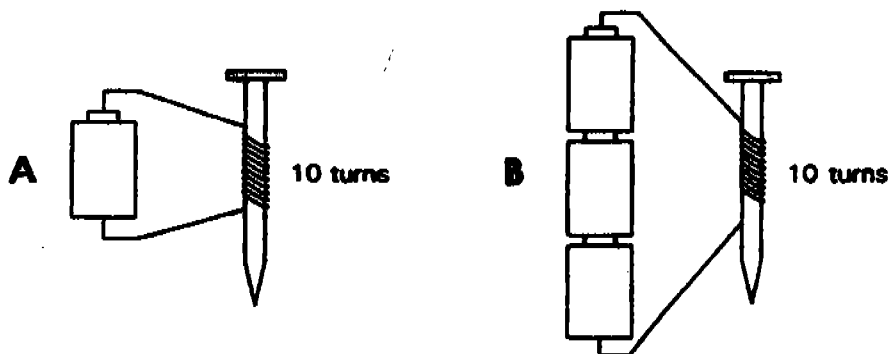
We can make the nail into a temporary magnet by the \_\_\_\_\_ method. The nail must be made of a \_\_\_\_\_ material before it can be magnetised. In this method, the permanent magnet is moved along the nail in the \_\_\_\_\_ direction with the magnet.

41. The diagram below shows two horseshoe magnets X and Y. Magnet X is resting on 3 pencils. Magnet Y is brought near Magnet X and Magnet X moves away to the left. Write the words 'North' and 'South' in the boxes provided to identify the poles of the magnets X and Y.

( 2 marks )



42. Jane wants to find out whether the number of batteries affects the strength of a magnet. She sets up two arrangements A and B. For each arrangement, she tests the strength of the magnet by counting the number of paper clips it can pick up. She uses at most 5 paper clips for each arrangement.



(a) Jane records the result in the table below. Predict the number of paper clips the electromagnet in arrangement B picked up by completing the table. (1 mark)

Arrangement	Number of paper clips attracted
A	2
B	

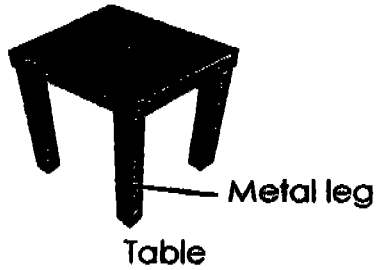
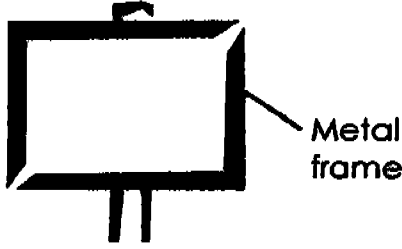
(b) Name another method that Jane can use to increase the strength of the magnet? (1 mark)

---



---

43. Each line below points to one metallic part of an object. If metal is not invented, which material is a good replacement for each of the following? (2 marks)

 <p>Metal leg</p> <p>Table</p>	<p>(a) Metal can be replaced by</p> <p>_____</p>
 <p>Metal frame</p> <p>Photo frame</p>	<p>(b) Metal can be replaced by</p> <p>_____</p>

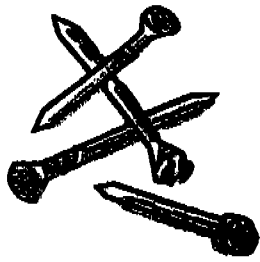
44. Complete the following sentence with the words provided in the box below. (2 marks)

Tiles	Leather bag	Woolen jacket	Spanner
-------	-------------	---------------	---------

\_\_\_\_\_ and \_\_\_\_\_ are objects obtained from living things.



45. Weiming tried to attract the items below with his magnet.



Iron nails



Bottle cap



Aluminium earrings

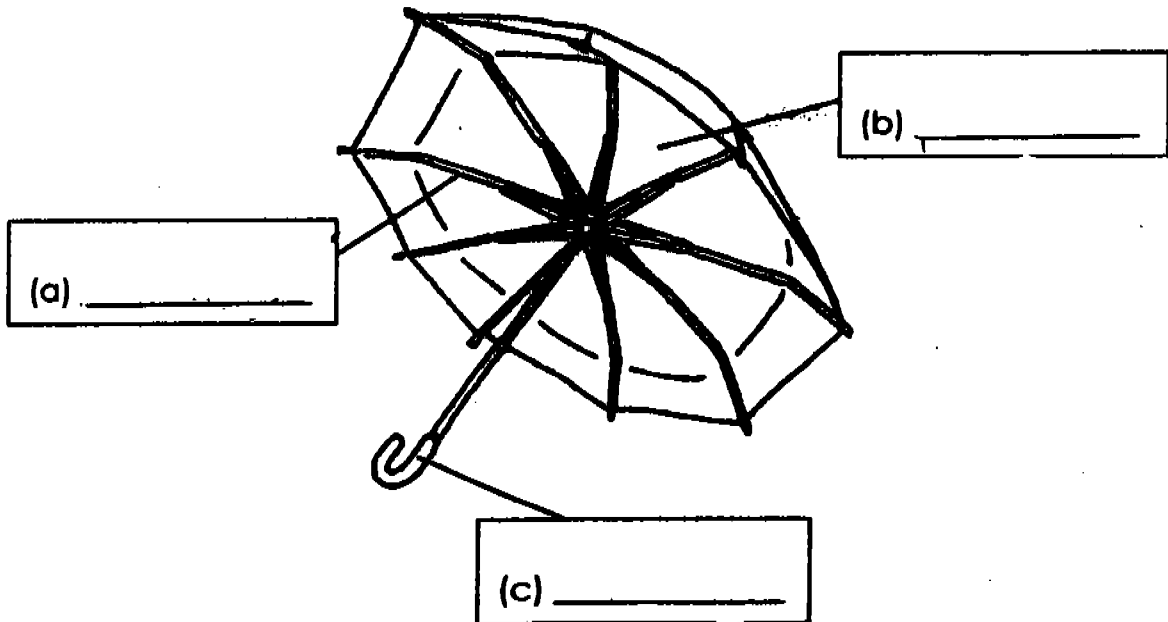
(a) Which item(s) were attracted to the magnet? (1 mark)

\_\_\_\_\_

(b) Explain why the item(s) can be attracted by the magnet. (1 mark)

\_\_\_\_\_

46. The umbrella below is made using three different materials. Label the different materials used for each part in the boxes provided below. (3 marks)



25

TAO NAN SCHOOL  
PRIMARY THREE  
SCIENCE  
MID YEAR EXAMINATION 2005

8A1

01. (2)	11. 3	21. 2
02. 1	12. 2	22. 4
03. 1	13. 1	23. 3
04. 3	14. 2	24. 2
05. 1	15. 2	25. 4
06. 4	16. 3	26. 2
07. 4	17. (3)	27. 4
08. 1	18. (4)	28. (3)
09. 2	19. 2	29. 1
10. 4	20. 2	30. 3

31) a) False

b) True

c) False

d) False

32) Tomato Telephone

Coconut File

33) a) It will die.

b) The hamster needs air to live

34) a) respond to changes

b) grow

35) a) Both have wings

b) Both have a head

c) i) Two ii) Four

d) i) walking ii) flying.

36) a) The seal uses its flippers to move.

b) The seal can move by swimming.

37) A parrot do not eat meat, it eat plants.

38) a) The whale is placed in the wrong place.

b) A whale is a mammal, a mammal breathes through lungs.

- 39) a) i) Polar bear      ii) Elephant  
b) i) Sailfish          ii) Monitor lizard  
c) i) Penguin            ii) Eagle  
d) i) Oyster             ii) Snail

40) stoke                  magnetic

same

- 41) i) North      ii) North  
iii) South      iv) South

42) a) 5

b) Increase the number of coils to increase the strength of the magnet.

43) a) wood      b) wood

44) Leather bag      Woollen jacket

45) a) Iron nails were attracted to the magnet.

b) Iron is a magnetic material.

46) a) metal      b) plastic      c) wood