



**CHIJ Primary (Toa Payoh)**  
**First Semestral Examination 2004**  
**Science**

SAT

Name: \_\_\_\_\_ ( )

Date: 13 May 04

Class: Primary 3 \_\_\_\_\_

Time: 1 h 30 min

Parent's Signature: \_\_\_\_\_

Total Marks:

100
-----


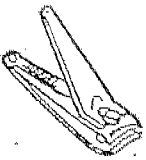
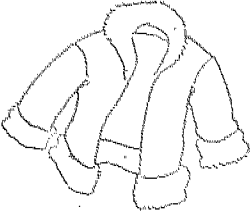

**Section A (60 marks)**

For each question from 1 to 30, four options are given. One of them is the correct Answer. Make your choice. Shade the correct oval (1, 2, 3 or 4) on the OAS.

1. Which one of the following statements is true of all non-living things?

- (1) They are made from things that were once alive.
- (2) They cannot move by themselves.
- (3) They always remain the same in size and colour.
- (4) They cannot be destroyed.

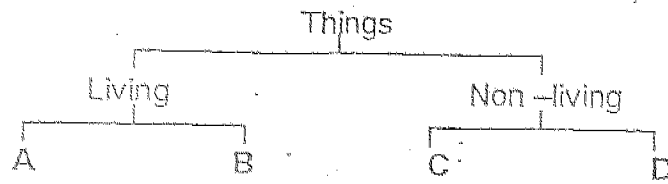
2.

A.    A potato	B.    A nail clipper	C.    A woollen jacket	D.    A netball
---	---	--	--

Which row in the table below correctly classifies the materials that all the four items are made of?

(1)	Living	Non-living	Once alive	Non-living
(2)	Non-living	Once alive	Living	Living
(3)	Living	Non-living	Living	Once alive
(4)	Once alive	Living	Once alive	Non-living

3. Study the classification table below carefully.



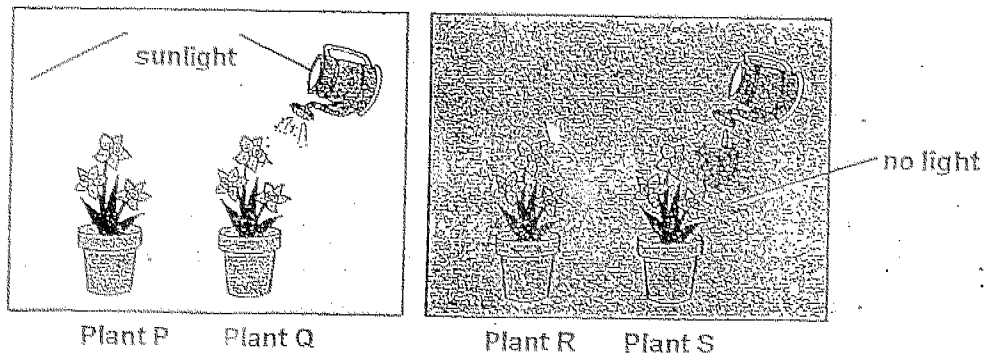
Which one of the following sets of things in the table below represents A, B, C and D correctly?

	A	B	C	D
(1)	crocodile	balloon	puppy	book
(2)	computer	eagle	television	flower
(3)	butterfly	plant	pencil	chicken
(4)	plant	elephant	basketball	clock

4. Marie bought a young rose plant and placed it in her living room. The next day, she went on a one month holiday with her family. When she came back, she saw that her rose plant had withered and died. Why do you think the rose plant died?

- (1) The plant did not have enough fertiliser.
- (2) The plant was not given enough water.
- (3) The living room was too small.
- (4) The pot was too small for the plant.

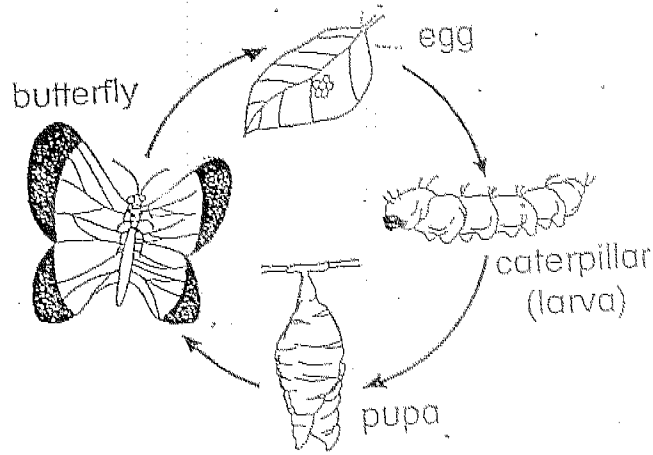
5. Some students wanted to test the factors that the plants need in order to stay alive. Using four identical plants, they set up four different environments. The drawings show what the students gave to each of the plants.



Which plant would most likely be alive after one month?

- (1) P
- (2) Q
- (3) R
- (4) S

6.



The life cycle of a butterfly above shows that a butterfly \_\_\_\_\_

- (1) responds to changes around them
- (2) is able to reproduce and grow
- (3) becomes a non-living thing when it is a pupa
- (4) is able to move on its own when is an adult

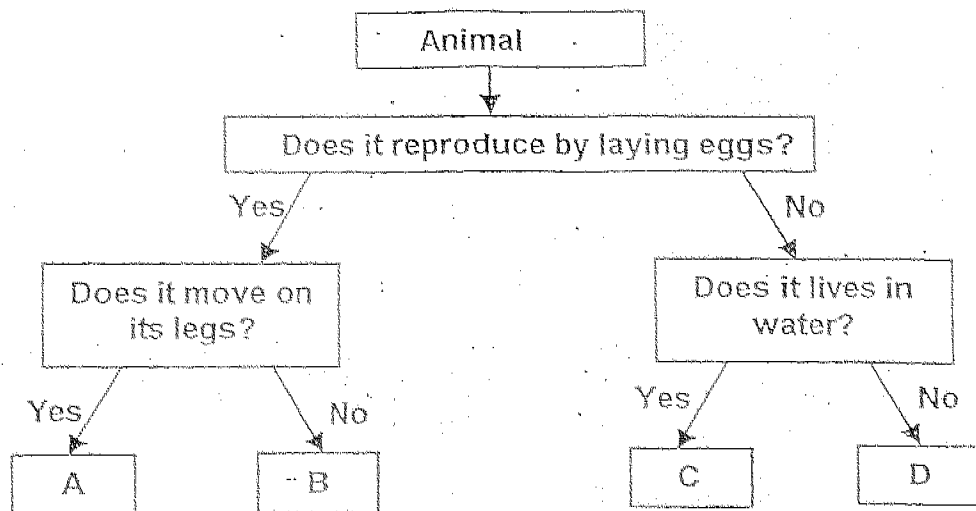
7. The table below shows the characteristics of 4 animals.

Animal	Number of legs				Feelers	Wings
	2	4	6	8		
A	✓				x	✓
B		✓			x	x
C			✓		✓	✓
D				✓	x	x

Which of them A, B, C or D is most likely an insect?

- 1) A
- 2) B
- 3) C
- 4) D

8. The chart below shows the characteristics of 4 organisms. Which of the following A, B, C or D is a snake?



- 1) A
- 2) B
- 3) C
- 4) D

9. Which one of the statements below is true about both plants and fungi?

- (1) They need sunlight to make food.
- (2) They are micro-organism.
- (3) They are living things.
- (4) They contain chlorophyll.

10. Bread Mould grows fastest on \_\_\_\_\_

		Condition of the places where the slices of bread are placed				
Bread		Dark	Sunny	Damp	Dry	Airy
(1)	A		√			√
(2)	B	√		√		
(3)	C		√			√
(4)	D	√			√	

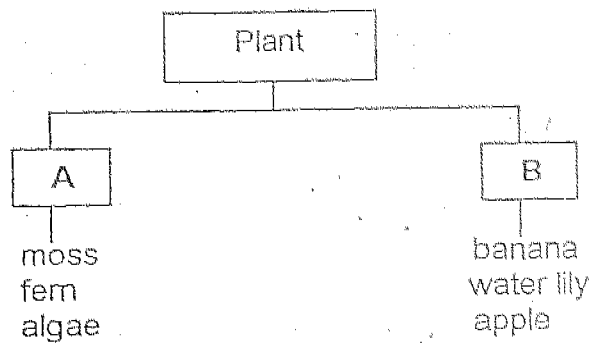
11. Melissa wrote the four sentences below to describe a living thing.

- It cannot make its own food.
- It survives in the bodies of plants.
- It can be carried by the wind.
- It can reproduce.

What one of the following is the living thing that Melissa has described?

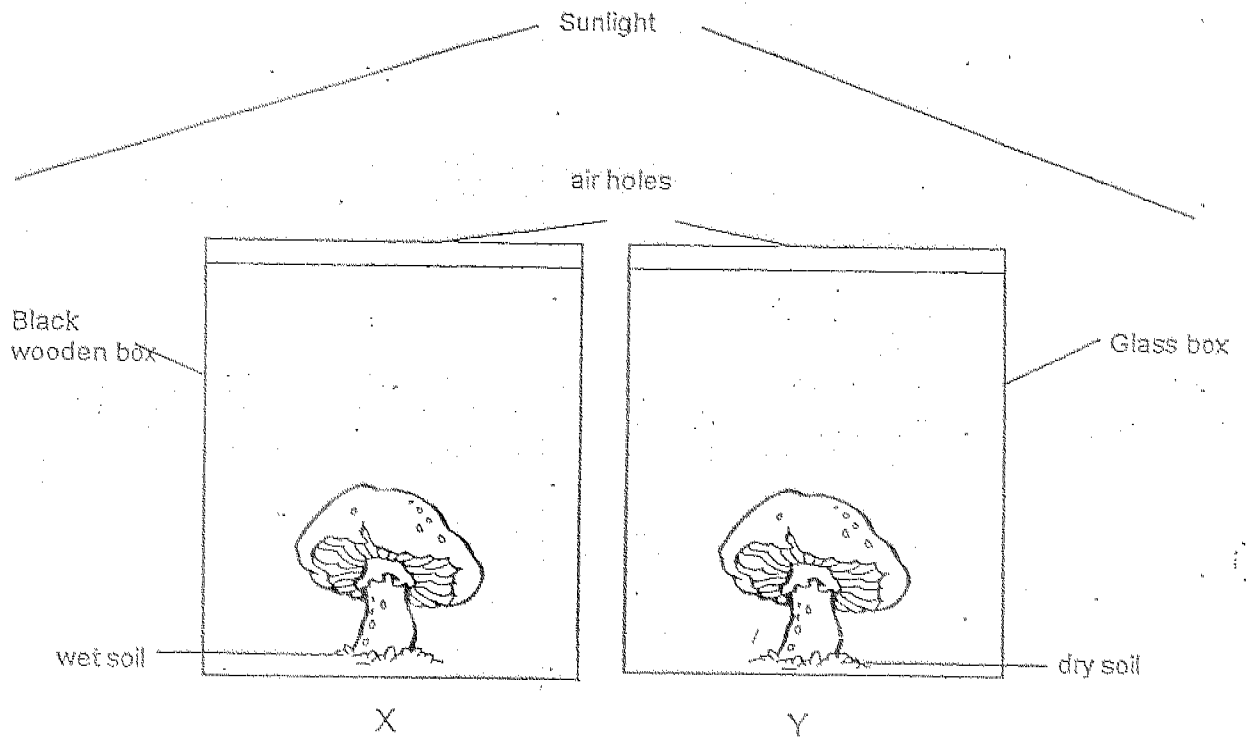
- (1) Bacteria
- (2) Toadstool
- (3) Mosquito
- (4) Fungus

12. The plants are classified into two groups. What are the correct headings for 'A' and 'B'?



	A	B
(1)	Poisonous	Non-poisonous
(2)	Water	Land
(3)	Land	Water
(4)	Non-flowering	Flowering

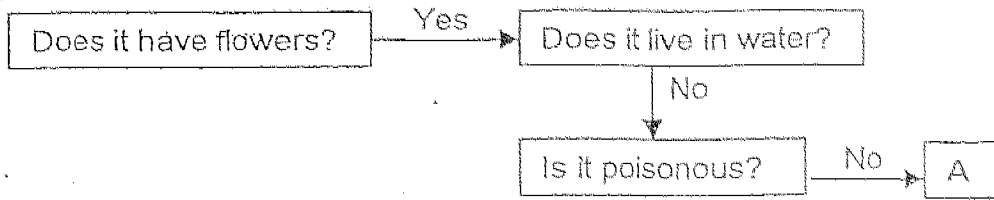
13. Two mushrooms are kept in two boxes that allow air to pass through. Mushroom X is kept in a black wooden box while mushroom Y is kept in a glass box.



Mushroom X will \_\_\_\_\_ than Mushroom Y.

- (1) die faster
- (2) grow taller
- (3) turn greener in colour
- (4) become weaker

14. Study the chart below.



'A' is a \_\_\_\_\_.

- (1) duckweed plant
- (2) bacteria
- (3) mushroom
- (4) tomato plant

15. Sharon has written four statements about her pet angelfish. Which statements are true?

- A: It has fins which helps it to breathe.
- B: It has scales which protect its body.
- C: It reproduces by laying many eggs at a time.
- D: It has gills which helps it to swim faster.

- (1) A and B only
- (2) B and C only
- (3) C and D only
- (4) A, B, C and D

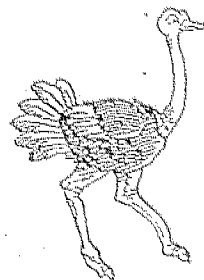
16. Which one of the animals shown below is different?



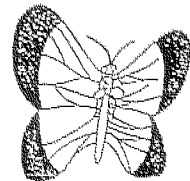
A grasshopper



a parrot




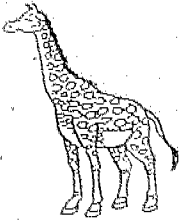






an ostrich



a butterfly

- (1) The grasshopper is different because it can hop.
- (2) The parrot is different because its body is covered with feather.
- (3) The ostrich is different because it cannot fly.
- (4) The butterfly is different because it can lay eggs.

Refer to the animals in Group J and Group K to answer Question 17 and 18.

Group J		Group K	
			
a cat	a giraffe	a guppy	a crocodile
			
a monkey	a fox	a goldfish	a snake

17. Which of the following classification below is correct about the animals in Group J and Group K?

	Group J	Group K
(1)	Give birth to its young	Lay eggs
(2)	Lives on land only	Lives in water only
(3)	Eats both animals and plants	Eats only plants
(4)	Body covered with hair	Body covered with scales

18. David is describing an animal to his classmates.

David's description:

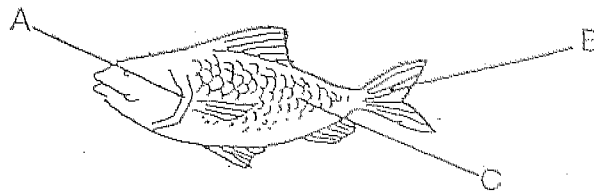
- A: Its body is covered with scales.
- B: It lays eggs.
- C: It does not have fins.
- D: It uses its four limbs to move on land.

Based on his description, which animal is he describing?

- (1) crocodile
- (2) whale
- (3) crab
- (4) prawn



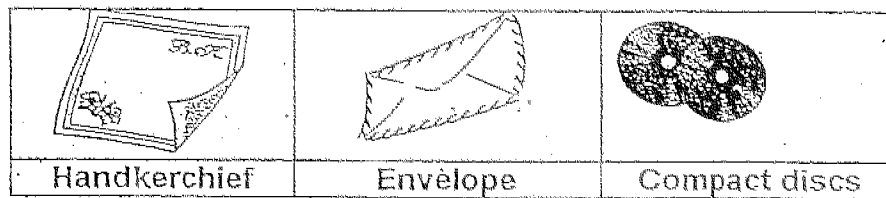
19. Match the body parts of the fish to its name. [Check]



a fish

	A	B	C
(1)	tail	gill cover	scales
(2)	gill cover	tail	scales
(3)	scales	tail	gill cover
(4)	gill cover	scales	tail

20.

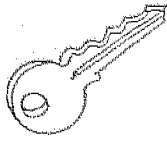


A piece of handkerchief, an envelope and two compact discs shown above are placed in a basin filled with dye.

What do you think you will observe when the three objects are taken out of the basin after ten minutes?

- (1) Only the handkerchief will become the same colour as the dye.
- (2) Only the envelope and the compact discs will be the same colour as the dye.
- (3) Only the compact disc will remain unchanged in colour.
- (4) All the three objects will become the same colour as the dye.

21.



(A)  
a plastic key



(B)  
a book



(C)  
a water bottle

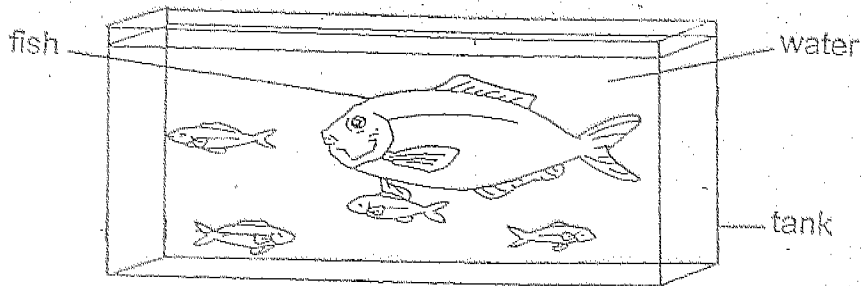


(D)  
a coin

Which of the objects above are made from things that were never alive?

- (1) A, B and C only
- (2) A, C and D only
- (3) B, C and D only
- (4) A, B, C and D

22.



The fish tank shown above is made of glass because the glass is \_\_\_\_\_.

- (1) hard and opaque
- (2) transparent and elastic
- (3) elastic and waterproof
- (4) waterproof and transparent

23. Mark has put the things on his table into two groups as shown in the table below. Study the classification.

He grouped them according to \_\_\_\_\_

Things	
Group G	Group H
frying pan	plastic file
computer	glass marble
handphone	steel nail

- (1) the types of materials they are made of
- (2) the mass of the materials they are made of
- (3) the number of materials they are made of
- (4) the usefulness of the materials they are made of

24. George is buying a sweater for his trip to Korea during the cold winter.

Which of the following material will be able to give him the best protection against the cold and wet weather?

- (1) leather
- (2) silk
- (3) nylon
- (4) cotton

25. The table below shows some objects made by materials which are selected because of its physical properties.

Which of the object is incorrectly matched to the material used?

	Object	Material	Physical property
(1)	Soccer ball	Plastic	Heavy
(2)	Wedding ring	Silver	Hard
(3)	Window pane	Glass	Transparent
(4)	Shopping bag	Paper	light

26. An umbrella shelters a person from the strong sunlight and heavy rain.

If you are choosing a material to make an umbrella, the material must be \_\_\_\_\_.

- A: light
- B: smooth
- C: waterproof
- D: stiff

- (1) A and B only
- (2) A and C only
- (3) B and C only
- (4) C and D only

27. Mrs. Li is sewing a pillow for her daughter. Which of the following materials can she use to fill up the pillow?

- A: clay
- B: plastic
- C: cotton
- D: feather

- (1) A and B only
- (2) B and C only
- (3) B and D only
- (4) C and D only

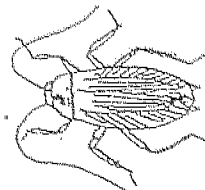
28.



a mosquito



a grasshopper



a cockroach



a chicken

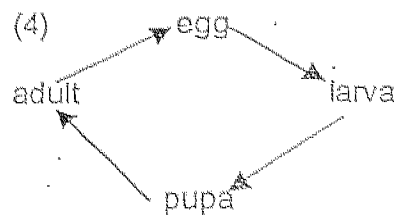
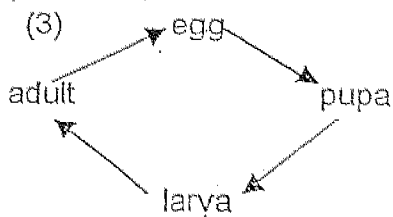
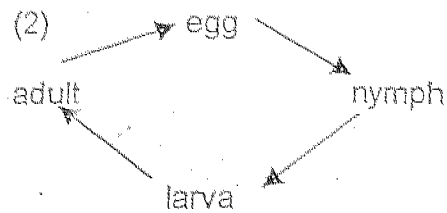
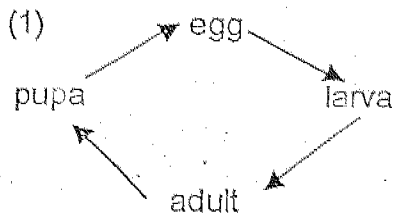
Which animal above goes through a 4-stage life cycle?

- (1) a mosquito
- (2) a grasshopper
- (3) a cockroach
- (4) a chicken

29. Which of the following pairs has been wrongly matched?

	Young	Adult
(1)	caterpillar	butterfly
(2)	mealworm	beetle
(3)	wiggler	moth
(4)	maggot	housefly

30. Which of the following shows the correct life cycle of a mealworm beetle?



**CHIJ Primary (Toa Payoh)**  
**First Semestral Examination 2004**  
**Science**

Name: \_\_\_\_\_ ( )

Date: 13 May 04

Class: Primary 3 \_\_\_\_\_

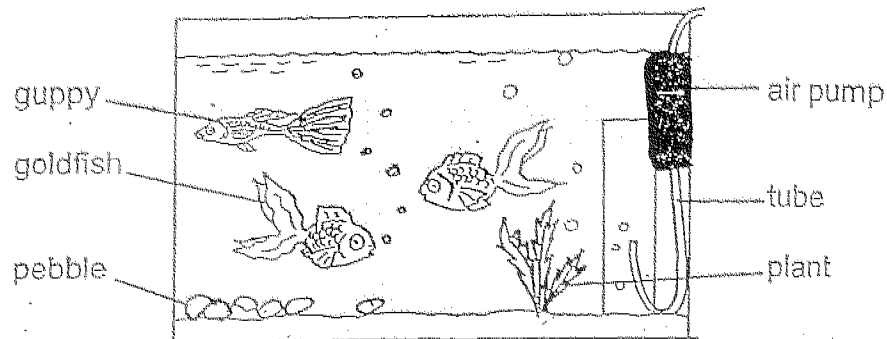
Total Marks:

21
----

**Section B : Part 1**

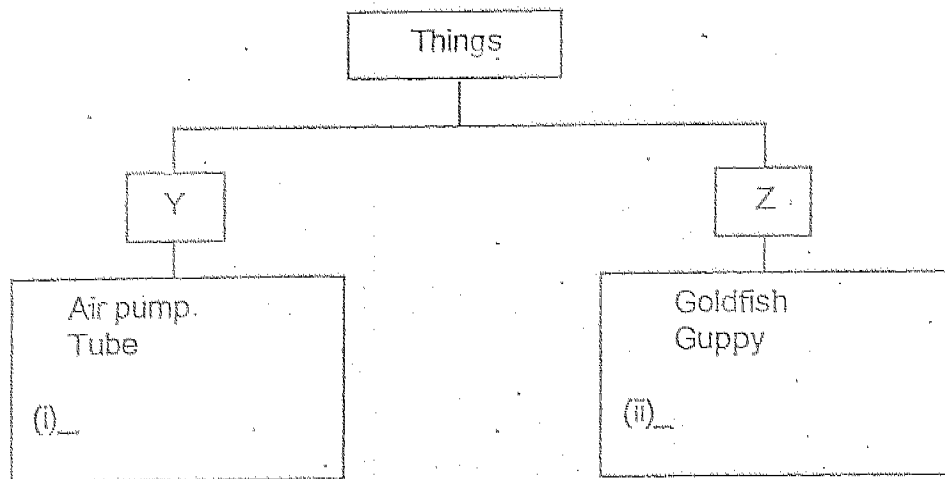
For each question from 31 to 39, write your answers in the spaces provided. The number of marks allotted for each question is shown in brackets.

31. Look at the picture of Tom's aquarium.



There are six things in his aquarium. Tom classified them in the table below.

(a) Complete the table. [2m]

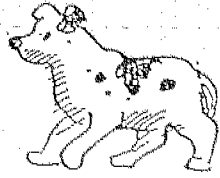


(b) Write the headings to replace 'Y' and 'Z'. [1m each]

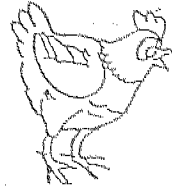
Y : \_\_\_\_\_

Z : \_\_\_\_\_

32.



a dog



a hen

- (a) Write one difference in the physical characteristic between the dog and the hen. (Do not compare the size.) [1m]

---

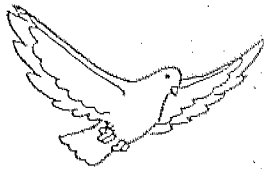
---

- (b) What is the difference in the method of reproduction between the dog and the hen? [1m]

---

---

33.



a dove



a stone fish

Although both the dove and the stonefish are animals, they are different in many ways.

- a) What is the difference in the way the two animals move? [1m]

---

---

- b) What is the difference in the body covering of the two animals? [1 m]

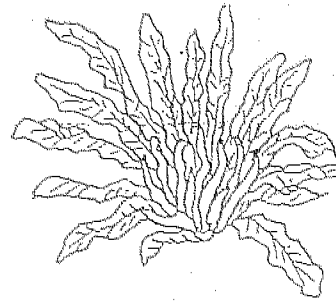
---

---

34.



Mushroom



Bird's nest fern

(a) Do the mushroom and the bird's nest fern reproduce in the same way? [1m]

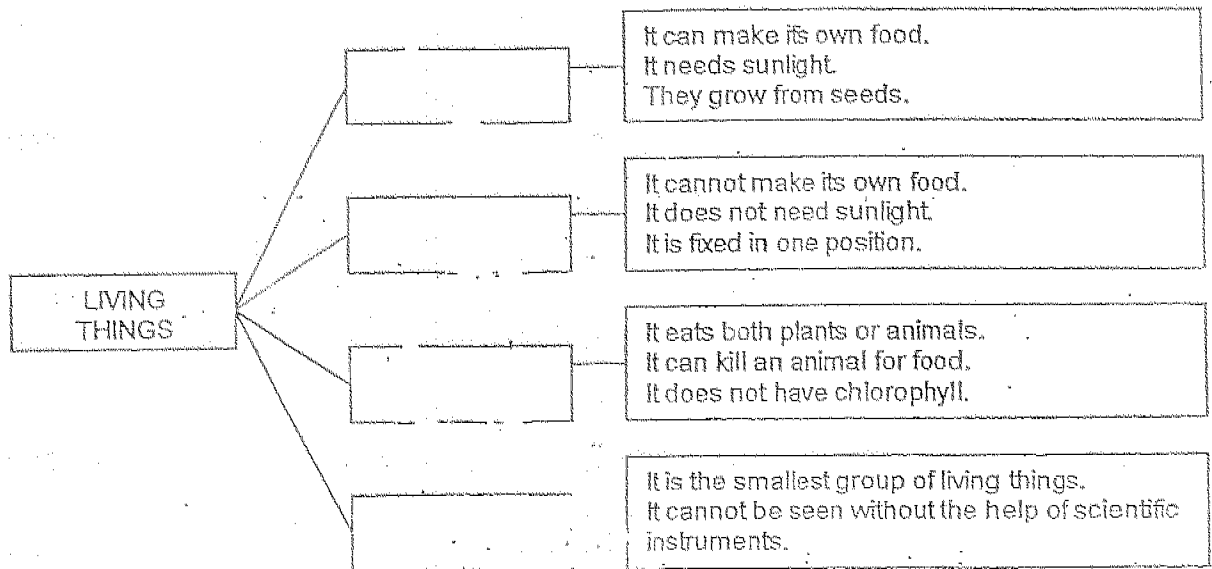
\_\_\_\_\_

(b) How do they reproduce? [1m]

\_\_\_\_\_

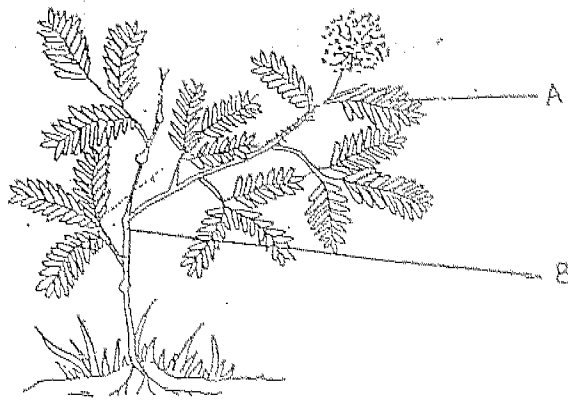
35. Living things is classified into four main groups. Study the chart below and write the names of the group of living things in the correct boxes to complete the chart.

Use the words given in the box below. [2m]





36.



A mimosa plant

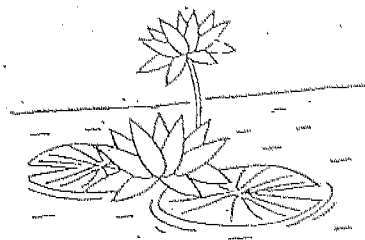
(a) What are the parts labelled A and B?

A: \_\_\_\_\_ [1/2 m]

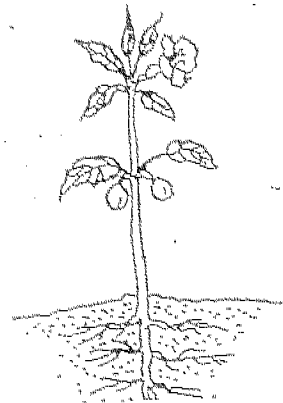
B: \_\_\_\_\_ [1/2 m]

(b) If you touch the mimosa plant, the part labelled \_\_\_\_\_ will close up. [1m]

37. Observe the drawing of the two plants below.



Water Lily plant

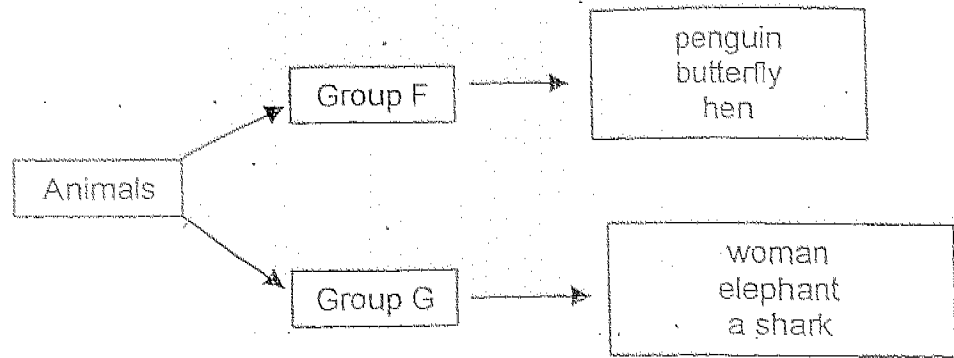


Balsam Plant

Write 'Yes' or 'No' in the correct boxes in the table below. [1/2m each]

Plants	Has flowers	Lives on land
Water Lily Plant		
Balsam Plant		

38. Study the classification chart below carefully.



(a) What is the difference between the animals in Group F and those in Group G? [1m]

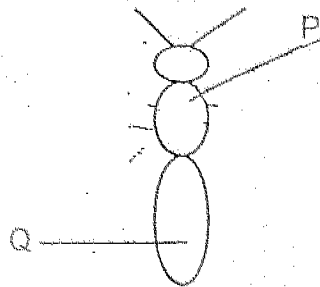
---

---

(b) In which group would you place 'lion'? [1m]

---

39.



The above shows an incomplete picture of an insect, which Lillian wants to draw.

This insect has legs but no wings.

(a) Complete the drawing of the insect. [1m]

(b) The part labelled P is the \_\_\_\_\_ [1m]

(c) The part labelled Q is the \_\_\_\_\_ [1m]

CHIJ Primary (Toa Payoh)  
First Semestral Examination 2004  
Science

Name: \_\_\_\_\_ ( )

Date: 13 May 04

Class: Primary 3 \_\_\_\_\_

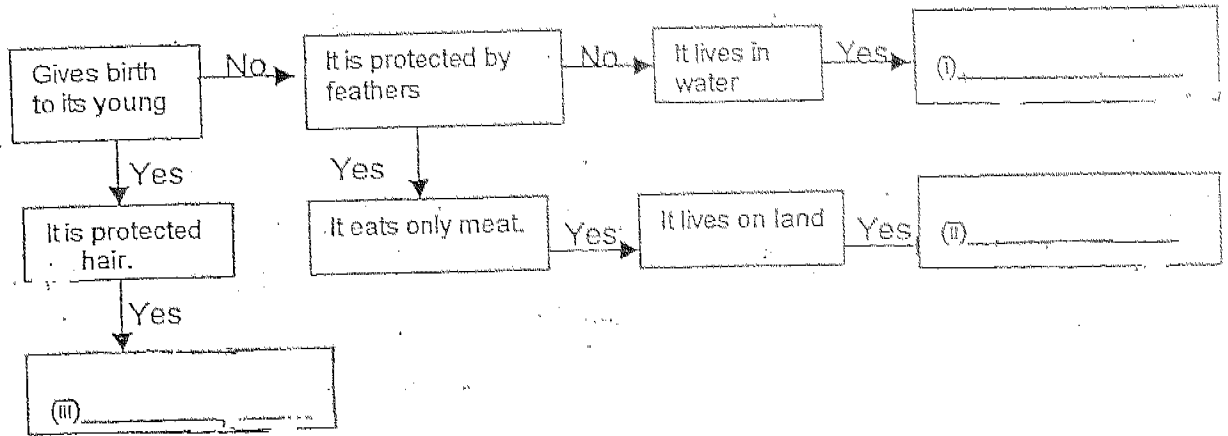
Total Marks:

19

Section B : Part 2

For each question from 40 to 46, write your answers in the spaces provided. The number of marks allotted for each question is shown in brackets.

3. Study the chart below.

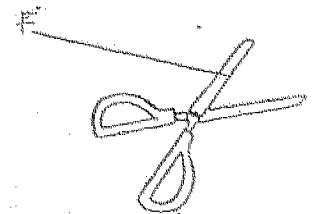
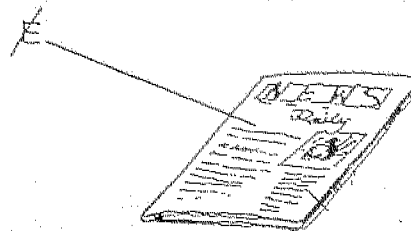
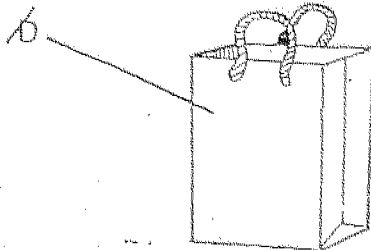
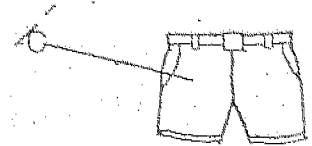
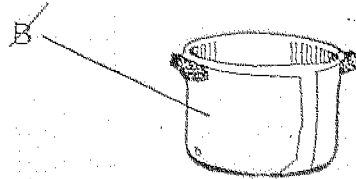
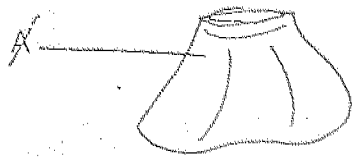


(a) Write 'eagle', 'monkey' and 'prawn' in the correct boxes to complete the chart. [1m each]

(b) Which of the animals in the flow chart is a mammal? [1m]

\_\_\_\_\_

41. Look at the pictures. The letters below each picture represent the materials that are used to make the objects



Write each letter correctly in the blanks below. [ $\frac{1}{2}$ m each]

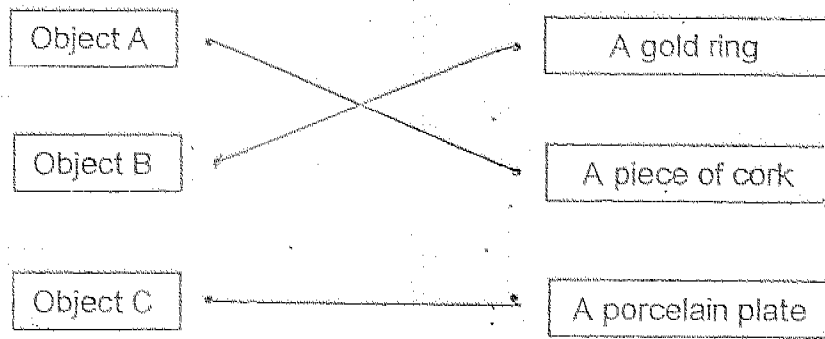
Paper	Metal	Cloth
_____	_____	_____
_____	_____	_____

42. Keith puts three things in a basin of water and recorded his findings in the table below.

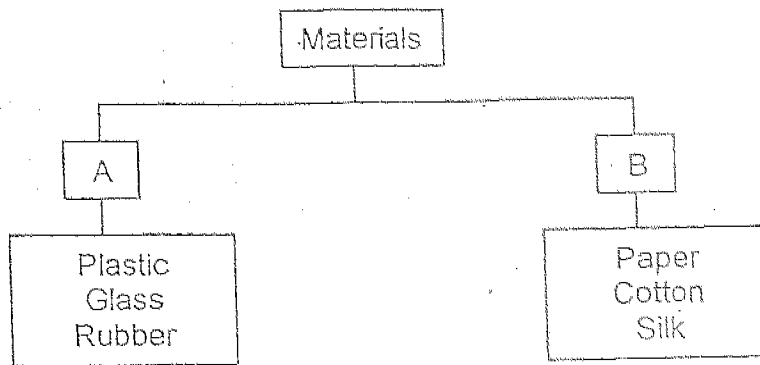
Properties of materials	Object A	Object B	Object C
float	No	No	Yes
transparent	No	No	No
Made from man-made material	No	Yes	No

From the findings of his experiment, determine what is Object A, B and C.

Match them. [1m each]



43. Sally used the table below to group some materials.



(a) What would be suitable headings for 'A' and 'B'?

i) A: \_\_\_\_\_ [1m].

ii) B: \_\_\_\_\_ [1m]

(b) In which group would you place a cardboard box? [1m]

Group \_\_\_\_\_

44. The table below shows a few objects and the materials that are used to make them.

Objects	Metal	Glass	Leather	Wood
A	√		√	
B		√		√
C	√	√		
D	√			√

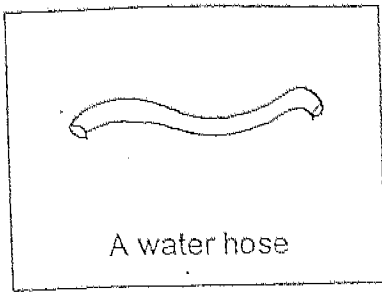
Objects :      bottle      handbag      knife      window

Use the information in the table and the list of objects given, determine what are Objects B and D.

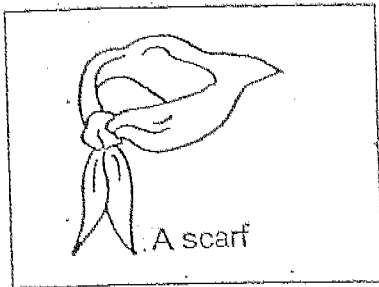
Object B: \_\_\_\_\_ [1m]

Object D: \_\_\_\_\_ [1m]

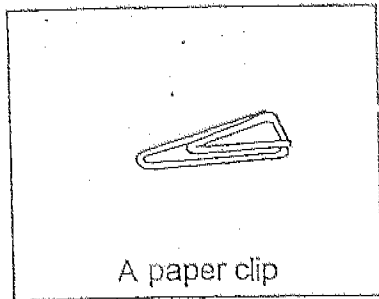
45. Draw lines to match the object to the material that is used to make it. [ $\frac{1}{2}$ m each]



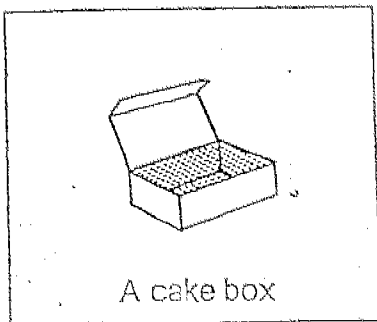
Cloth



Metal

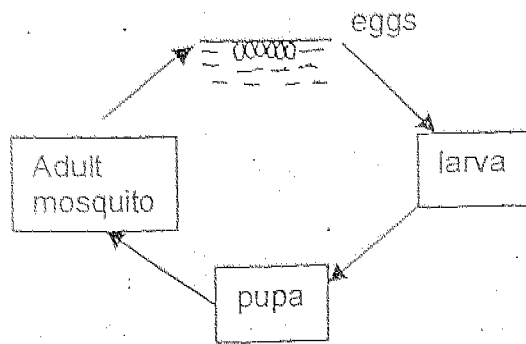


Rubber



Paper

46.



Life cycle of a mosquito

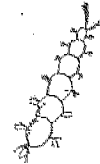
(a) Which pictures below is the larva, pupa and adult of the mosquito? [1/2m each]



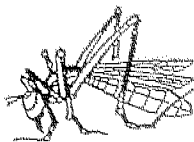
Picture A



Picture B



Picture C



Picture D



Picture E



Picture F

Larva : Picture \_\_\_\_\_

Pupa : Picture \_\_\_\_\_

Adult mosquito : Picture \_\_\_\_\_

b) At the larva stage, the young of the mosquito is called a \_\_\_\_\_ [1/2m]

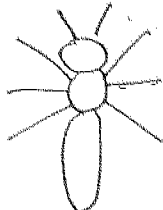
End of paper

Setting and vetting team: Mrs. Pauline Soh  
Mrs. Julie Sim



CHIJ PRIMARY (TOA PAYOH)  
FIRST SEMESTRAL EXAMINATION 2004  
PRIMARY 3 ROSE

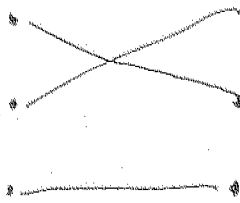
SM

- 1) 2
- 2) 1
- 3) 4
- 4) 2
- 5) 2
- 6) 2
- 7) 3
- 8) 2
- 9) 3
- 10) 2
- 11) 1
- 12) 4
- 13) 2
- 14) 4
- 15) 2
- 16) 3
- 17) 4
- 18) 1
- 19) 2
- 20) 3
- 21) 2
- 22) 4
- 23) 3
- 24) 3
- 25) 1
- 26) 2
- 27) 4
- 28) 1
- 29) 3
- 30) 4
- 31) a) i) pebble      ii) plant  
b) Y : It is non-living thing.  
Z : It is a living thing.
- 32) a) The dog has 4 legs whereas the hen has 2 legs.  
b) The dog gives birth whereas the hen lays eggs.
- 33) a) The dove fly whereas the stonefish swims.  
b) The dove have feathers whereas the stonefish have scales.
- 34) a) Yes. They do.  
b) Both reproduce by spores.
- 35) Plants  
Fungi  
Animals  
Micro-organism
- 36) a) A : leaf  
B : stem  
b) leaf
- 37) Yes      No  
Yes      Yes
- 38) a) Group F has wings whereas Group G has no wings.  
b) Place lion in group G
- 39) a)   
b) Thorax  
c) abdomen

40) i) prawn    ii) eagle    iii) monkey

b) The monkey is a mammal.

41) D            B            A            42)  
E            F            C

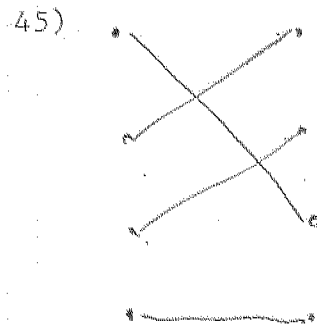


43) a) i) man-made  
      ii) natural

b) B

44) Object A : handbag

Object D : knife



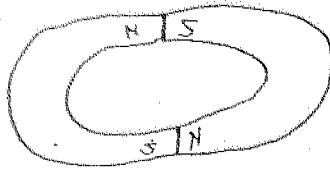
46) a) Larva : Picture C

Pupa : A

Adult mosquito : Picture D

b) wriggler

42) a)



b) They are all unlike poles.

43) a) The aluminium foil allows magnetism to pass through.

b) The iron will be attracted.

44) a) D. It can repel away from the magnet.

b) A C

B E

45) a) Yes

b) They are facing the unlike poles which it attracts.

c) D