

**Primary Three
Science
Semestral Assessment One**

Section A (30 x 2 marks)

For each question 1 to 30, four options are given. One of them is the correct answer. Make your choice (1,2,3 or 4). Write the correct answer in the box provided.

1. Which one of the following statements about non-living things is correct?

- (1) Non-living things need air to live.
- (2) Non-living things give birth to their young alive
- (3) Things that are alive are non-living things.
- (4) Things that were once alive are non-living things.

2. Which one of the following material is never alive?

- (1) silk
- (2) nylon
- (3) wool
- (4) cotton

3. Which one of the following objects is made from materials that were once alive?

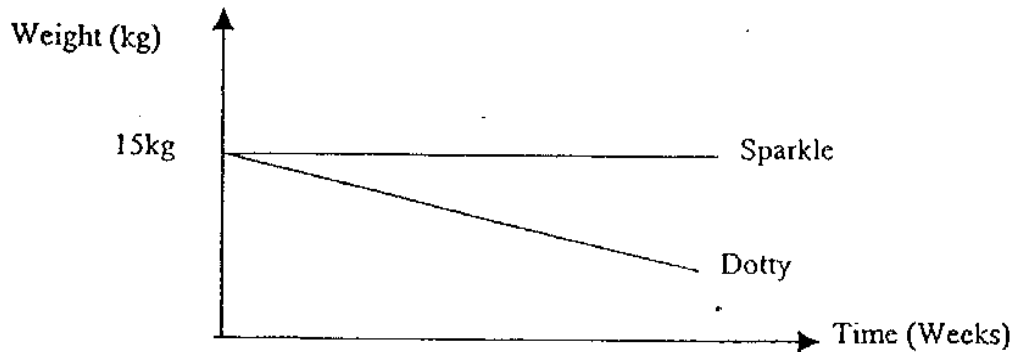
- (1) A plastic bag
- (2) A soft drink can
- (3) A diamond ring
- (4) A leather wallet

4. A bird was kept in a cage. It was fed with insects everyday. After a few days, it dies. What could have possibly caused this?



- (1) air
- (2) food
- (3) water
- (4) sunlight

5. Sarah had two dogs, Sparkle and Dotty. One day, Sarah decided to feed her dogs with dog biscuits bought from the supermarket. She fed the dogs with equal amount of dog biscuits three times a day. The dogs' weights were taken over a period of time and plotted as shown below.

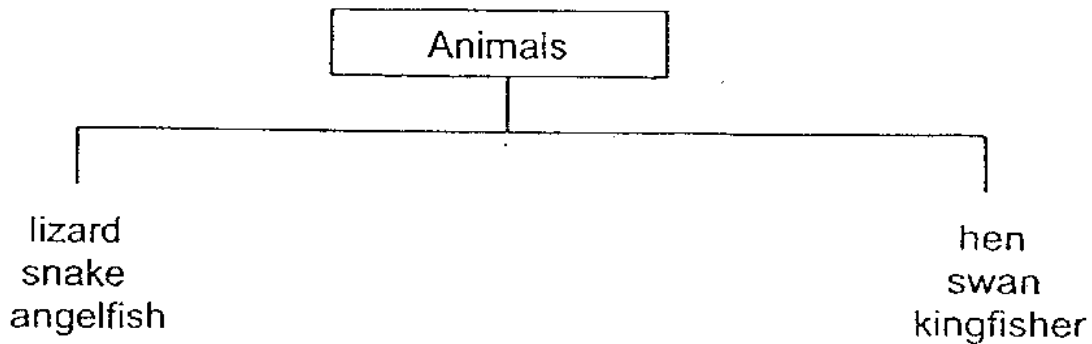


What does the graph show?

The graph shows that _____.

- (1) Dotty was eating well but not Sparkle.
- (2) Sparkle was eating well but not Dotty.
- (3) Dotty was gaining weight but not Sparkle.
- (4) Sparkle was gaining weight but not Dotty.

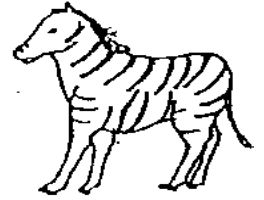
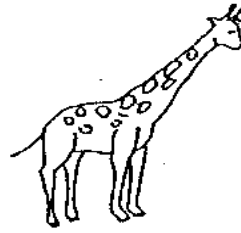
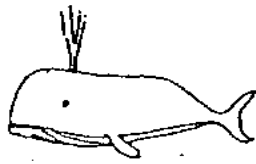
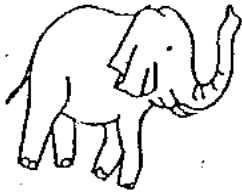
6. Study the classification table below.



The following animals are group according to _____.

- (1) where they live
- (2) the food they eat
- (3) their outer covering
- (4) how they reproduce

7. Which of the following does not belong to the group?



- (1) elephant
- (3) giraffe

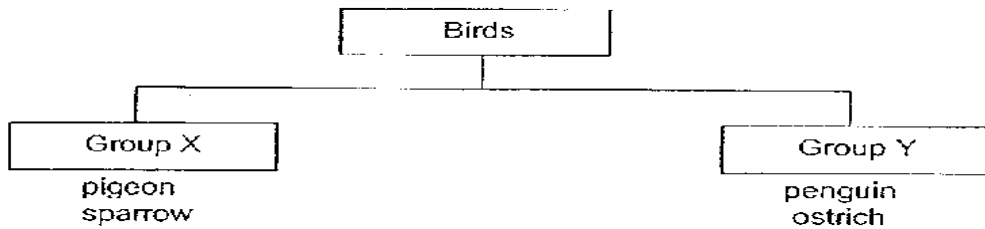
- (2) whale
- (4) zebra

8. Which pair of these animals does not lay eggs?

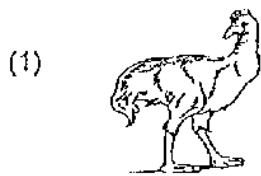
- (1) goldfish and seahorse
- (3) pig and giraffe

- (2) turtle and spiny anteater
- (4) shark and mosquito

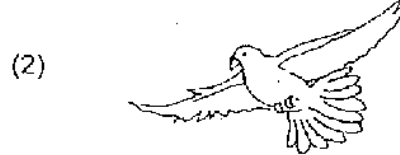
9. Study the classification table below.



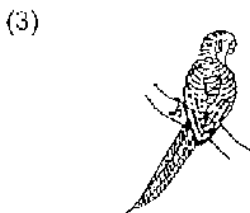
Which one of the following birds should be placed in Group Y?



Emu



Pigeon



Parakeet

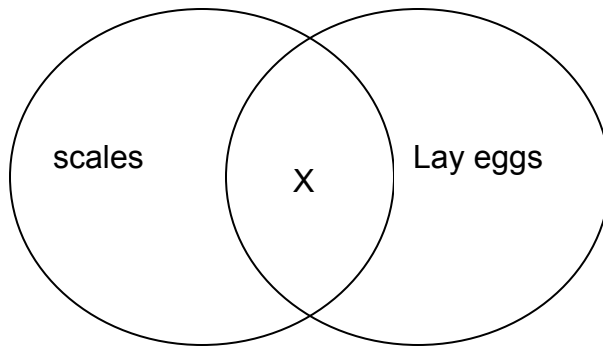


Hummingbird

10. Lynn studied a butterfly and made the following observations. Which one of her observation is incorrect?

- (1) The butterfly has six legs.
- (2) The butterfly has two body parts.
- (3) The butterfly has a pair of wings.
- (4) The butterfly has a pair of feelers.

11. Look at the Venn diagram below.



Which one of the following animals is X most likely to be?

- (1) frog
- (2) dragonfly
- (3) python
- (4) platypus

12. Which part of a tree protects the trunk?

- (1) stem
- (2) bark
- (3) roots
- (4) leaves

13. Which one of the following statements is true about the roots of a plant?

- (1) They make food for the plants.
- (2) They help the plant to stand upright.
- (3) They absorb water from the ground.
- (4) All roots are found under the ground.

14. Trees in Singapore are planted along the roads to provide _____.

- | | |
|-------------------|----------------|
| (1) colour | (2) shade |
| (3) edible fruits | (4) nice smell |

15. I am a fruit. I have yellow flesh and have only one seed. What am I?

- | | |
|------------|-----------|
| (1) durian | (2) lemon |
| (3) lychee | (4) mango |

16. Which statements tell you that about the diversity of plants?

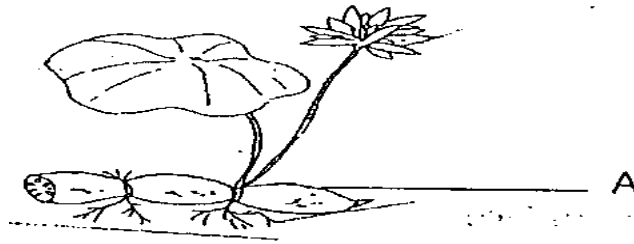
- (A) All plants produce edible fruits.
- (B) All plants have pleasant smell.
- (C) Plants can be found on land and in water.
- (D) Some plants produce flowers but others do not.

- | | |
|----------------|----------------|
| (1) A and B | (2) C and D |
| (3) A, B and D | (4) B, C and D |

17. Which one of the following is true about a Bird's Nest fern?

- (1) They grow on a rock.
- (2) They have beautiful flowers.
- (3) They are non-flowering plants.
- (4) They cannot make their own food.

18. Look at the picture below.



What is part A?

- | | |
|----------|------------|
| (1) leaf | (2) stem |
| (3) root | (4) flower |

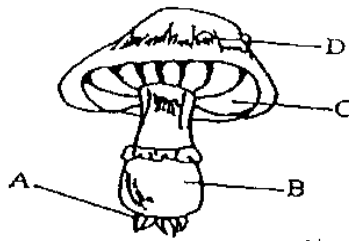
19. Which one of the following is not a type of fungi?

- | | |
|----------------|----------------|
| (1) moss | (2) mould |
| (3) Jew's ears | (4) puff balls |

20. _____ is a flowering plant.

- | | |
|-----------|------------|
| (1) Algae | (2) Balsam |
| (3) Mould | (4) Fungi |

21. A picture of a mushroom is shown below.



What is part C?

- | | |
|----------|-----------|
| (1) cap | (2) gills |
| (3) stem | (4) stalk |

22. Bracket fungus are not plants because they _____.

- (1) do not have roots
- (2) do not need water
- (3) do not have chlorophyll
- (4) do not grow on the ground

23. Yeasts are _____ that help to make bread fluffy.

- (1) spores
- (2) animals
- (3) bacteria
- (4) micro-organisms

24. Fungi reproduce by _____.

- (1) seeds
- (2) spores
- (3) giving birth
- (4) laying eggs

25. Mould is a kind of _____ that can be found on decaying bread

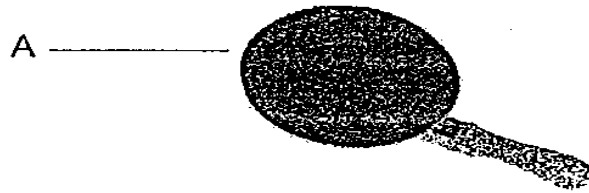
- (1) fungi
- (2) plants
- (3) bacteria
- (4) animals

26. Metals are very useful because they are _____.

- (A) flexible
- (B) durable
- (C) waterproof
- (D) transparent

- (1) A and D only
- (2) B and C only
- (3) A,B,C only
- (4) B,C and D only

27. A picture of frying pan is shown below.



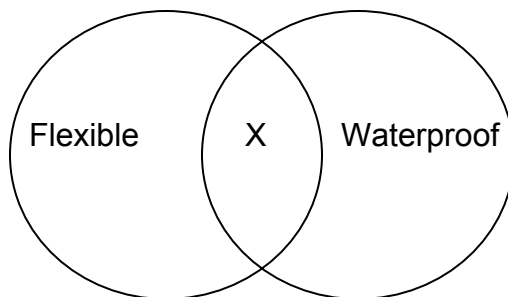
The part of the frying pan labelled A is usually made of metal. Why is it so?

- (1) Metal is soft.
- (2) Metal is light
- (3) Metal will not break easily.
- (4) Metal will not melt under strong heat.

28. Which one of the following objects is made of one material only?

- (1) watch
- (2) eraser
- (3) television
- (4) spectacles

29. Study the diagram below.



Which material can X represent?

- (1) wood
- (2) cloth
- (3) metal
- (4) rubber

30. A pattern that repeats itself again and again is called a _____.

- (1) cycle
- (3) conclusion

- (2) system
- (4) interaction

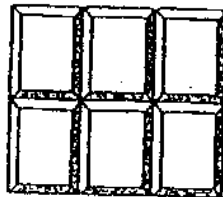
Section B (40 marks)

Write your answers for each question 31 to 46 in the blank spaces provided.

31. Classify the following objects into two groups. Give a heading for Group B. The heading for Group A has been done for you. Use each object once only. (4m)



A coin



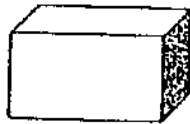
Chocolate



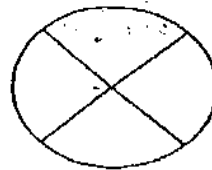
A bar magnet



Ball



A wooden box



Pizza

Group A

Group B

Rectangular shape	Circle shape

32. Look at the picture below.

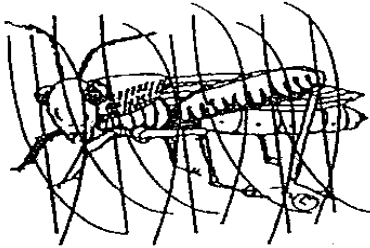


- a. What will the rat do when it sees the cat? (1m)

b. What characteristic of a living thing does the rat show? (1m)

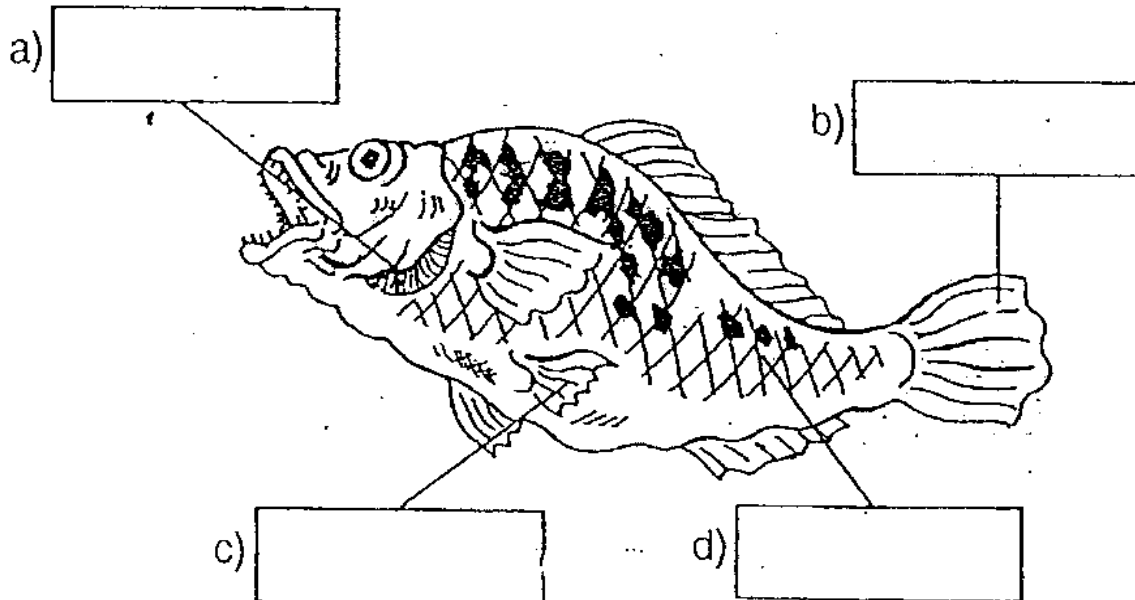
33. State one difference between a bicycle and a sparrow. (2m)

34. The grasshopper is hidden in the grass as shown below.



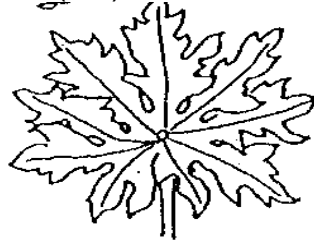
Give one reason why it is difficult for the sparrow to spot the grasshopper. (2m)

35. Label the parts of a fish. (2m)



36. Below are pictures of two leaves, Leaf A and Leaf B. Identify the edges of the leaves. (2m)

Leaf A



- a. Leaf A has _____ edges.

Leaf B



- b. Leaf B has _____ edges.

37. Match the following. (2m)



- creeper



- tree



- shrub

38. Below are names of some water plants. Describe at which part of a pond can you find the water plant. You may use the helping words given. The first one has been done for you. (3m)

float on water	partly-submerged	completely submerged
----------------	------------------	----------------------

	Water plant	Where it can be found
a.	Water lettuce	float on water
b.	Duck weed	
c.	Hydrilla	
d.	Cattail	

39. The fruits of some plants are grouped in the table below.

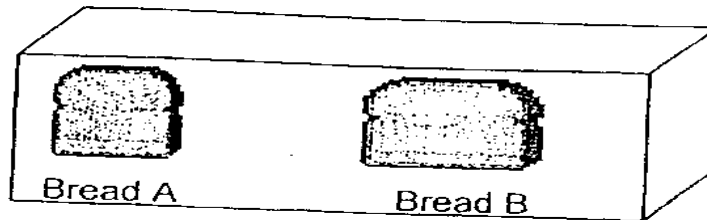
X	Y
Tomato	Angsana
Grape	Balsam
Long Bean	Mimosa

a. How are the fruits above grouped? (1m)

b. Name two fruits that can be placed in Group X. (2m)

and

40. Anita conducted an experiment. She had two pieces of bread, Bread A and Bread B. She toasted Bread A and added water to Bread B. Finally, she put both pieces of bread inside a box.



After a few days, she took out the bread. She saw that Bread A remained the same whereas some parts of Bread B had black patches on it.



Bread A



Bread B

a. What do you think are those black patches on Bread B? (1m)

b. Explain why Bread A remained unchanged. (1m)

c. Do you think this experiment is fair? Why? (2m)

41. Plants are very useful. State two uses of plants to animals (2m)

a. _____

b. _____

42.



Mushroom



Rose plant

State two differences between a mushroom and a rose plant. (2m)

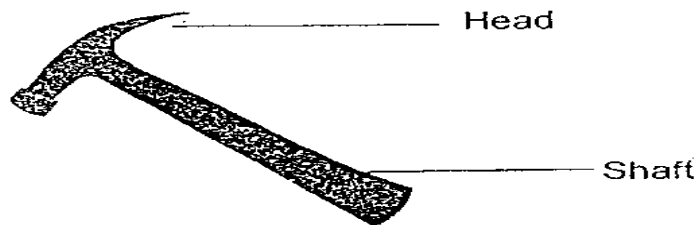
a. _____

b. _____

43. Name one physical property of the following materials. (4m)

Cloth	
Metal	
Wood	Hard
Glass	
Leather	Soft
Plastic	

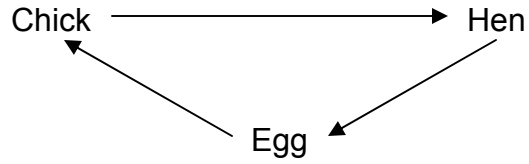
44.



The hammer is made of a shaft and a head.
a. Why is the head of the hammer made of metal? (1m)

b. Suggest a possible material that can be used to make the shaft? (1m)

45.



The above diagram shows the life cycle of a hen. Sammy said that the hen needs to continue to reproduce so that man have eggs to eat. Can you think of another reason necessary for the hen to continue reproducing? (2m)

46. The names of some adult animals are given in the table below. Write down the name of the young of these adult animals. The first one has been done for you.

Young	Adult
Tadpole	Frog
	Butterfly
	Sheep