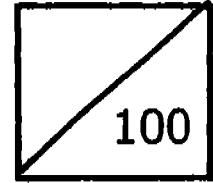




SAT

Rosyth School
First Semestral Assessment for 2005
SCIENCE
Primary 3



Total
Marks:

Name: _____

Class: Pr 3 - _____ Register No. _____ Duration: 1 h 30 min

Date: 11 May 2005

Parent's Signature: _____

Booklet A

Instructions to Pupils:

1. Do not open the booklets A and/or B until you are told to do so.
2. Follow all instructions carefully.
3. This paper consists of 2 booklets, A and B.
4. For questions 1 to 30 in Booklet A, shade the correct ovals on the Optical Answer Sheet (OAS) provided using a 2B pencil.
5. For questions 31 to 46, give your answers in the spaces given in the Booklet B.

	Maximum	Marks Obtained
Booklet A	60 marks	
Booklet B	40 marks	
Total	100 marks	

* This booklet consists of 12 pages .

PART I (60 MARKS)

For each question from 1 to 30, four options are given. One of them is the correct answer. Make your choice (1, 2, 3 or 4). **Shade the correct oval (1, 2, 3 or 4) on the Optical Answer Sheet.**

1. Which of the following things will die if there is no air?



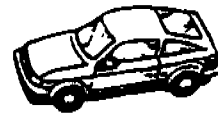
A



B



C



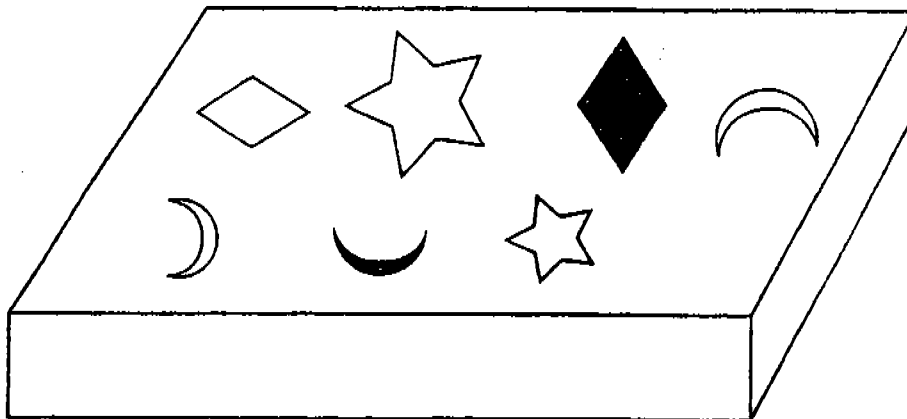
D



E

- | | |
|---------------------|---------------------|
| (1) A, C and D only | (2) A, B and E only |
| (3) A, C and E only | (4) A, B and C only |

2. Look at the objects in the box below.



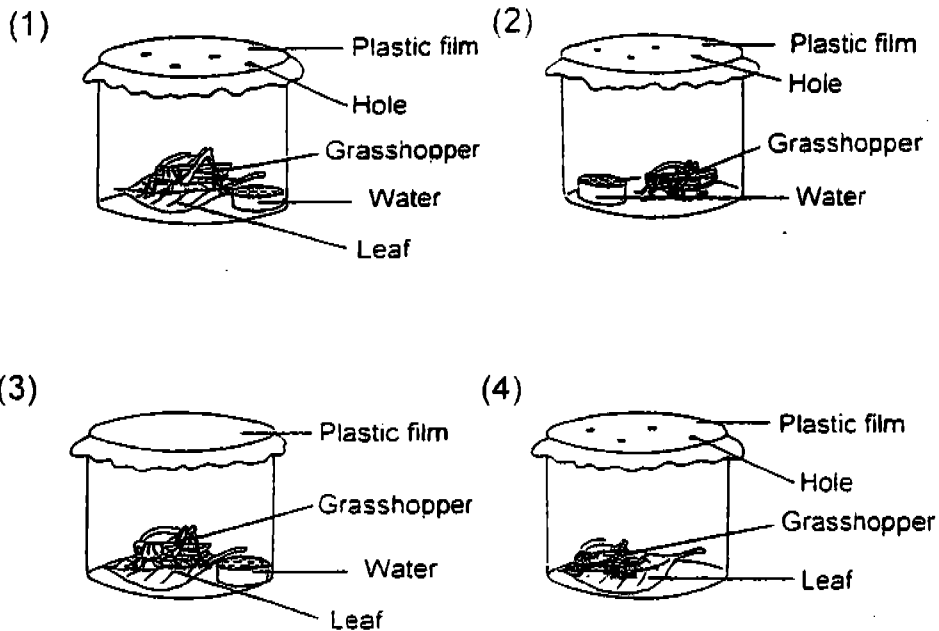
Which of the following properties can be used to group the objects?

- A : Colour
- B : Texture
- C : Shape

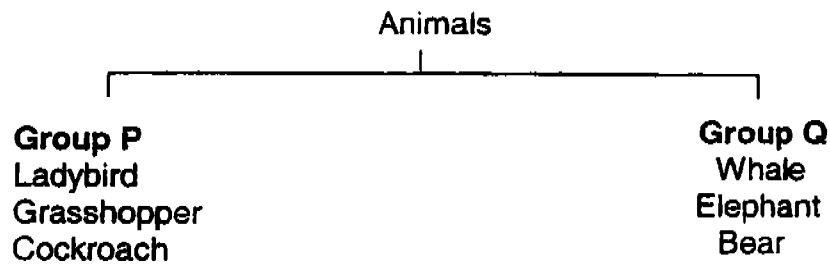
- | | |
|------------------|------------------|
| (1) A and B only | (2) B and C only |
| (3) A and C only | (4) A, B and C |

(Go on to the next page)

3. In the following experiment, four grasshoppers are kept in four different containers shown below. All four containers are sealed with a plastic film. In which of the containers would the grasshopper still be alive a few days later?



4. Study the classification table below.



Which of the following sets of headings for Group P and Group Q are correct?

	Group P	Group Q
A :	Plant eaters	Animal eaters
B :	Small animals	Big animals
C :	Animals that lay eggs	Animals that give birth to their young alive
D :	Animals that live on land only	Animals that live in water only

- (1) A and B only (2) B and C only
 (3) C and D only (4) A, B, C and D

(Go on to the next page)

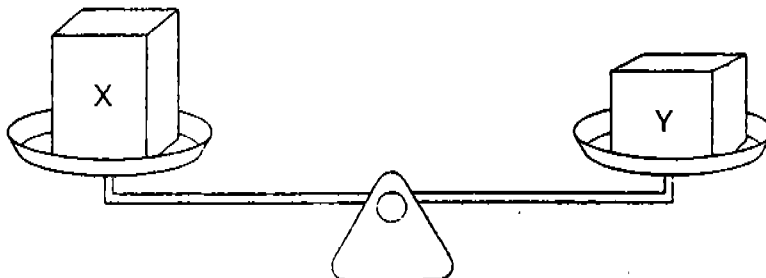
5. Study the table below.

Group	Objects
E	tissue, cotton wool, feathers
F	radio, bricks, pots

How are the objects in Group E and Group F different?

- (1) Objects in Group E are soft while those in Group F are hard.
- (2) Objects in Group E are sharp while those in Group F are blunt.
- (3) Objects in Group E are hot while those in Group F are cold.
- (4) Objects in Group E are heavy while those in Group F are light.

6. Look at the picture below.



How are objects X and Y similar?

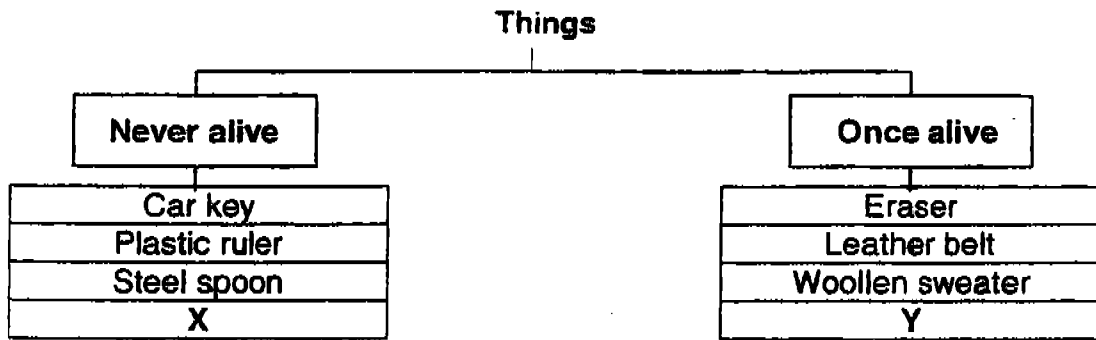
They are similar in _____.

- A : size
 B : shape
 C : weight

- (1) A and B only
- (2) A and C only
- (3) B and C only
- (4) A, B and C

(Go on to the next page)

7. Study the classification table below.



What can X and Y be?

	X	Y
(1)	Cellophane bag	Wooden chair
(2)	Feather duster	Tyre
(3)	Rubber band	Silk tie
(4)	Stapler	Thumbtack

8. Which one of the following birds cannot fly?

- | | |
|-------------|------------|
| (1) Sparrow | (2) Kiwi |
| (3) Eagle | (4) Parrot |

9. Which of the following animals eats plants only?

- | | |
|-----------|---------------|
| (1) Cat | (2) Crocodile |
| (3) Snake | (4) Goat |

10. Sheep reproduce by giving birth to young.
Which one of the following animals reproduce in the same way?

- | | |
|------------|--------------|
| (1) Eagle | (2) Platypus |
| (3) Turtle | (4) Dog |

11. Which group of animals is not found in the right place?

	Place	Animals
(1)	Forest	monkeys, apes and squirrels
(2)	Ocean	seahorses, whales and sharks
(3)	Garden	bees, butterflies and snails
(4)	Pond	frogs, snails and dolphins

(Go on to the next page)

12. Animal K has the following characteristics.

- It feeds on flies.
- It lays eggs in the water.
- It can hop and swim.
- It has a soft and moist skin.
- It has no outer covering besides its skin.

Which one of the following is probably Animal K?

- | | |
|-----------|--------------|
| (1) Guppy | (2) Mosquito |
| (3) Frog | (4) Seahorse |

13. Which one of these animals does not have the same body covering as the rest?

- | | |
|--------------|---------------|
| (1) Lizard | (2) Earthworm |
| (3) Goldfish | (4) Snake |

14. Study the leg of this animal carefully.



Which of the following groups does this animal belong to?

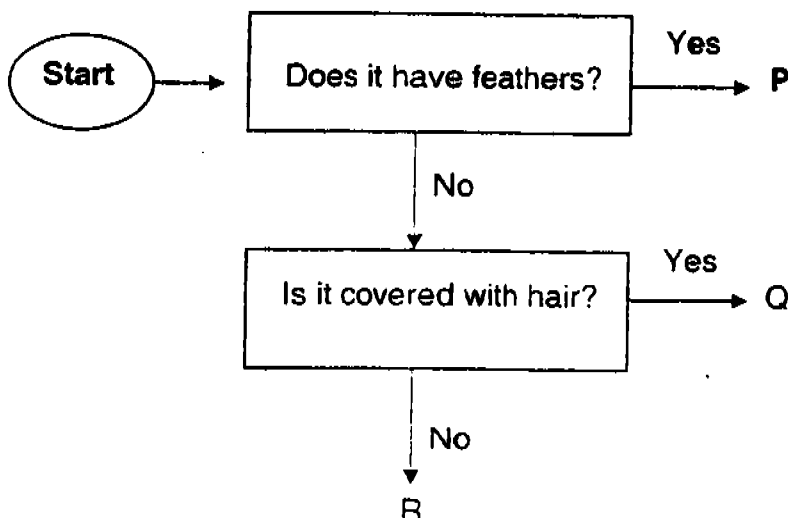
- | | |
|-------------|----------------|
| (1) Insects | (2) Amphibians |
| (3) Birds | (4) Mammals |

(Go on to the next page)

15. Which of the following list of animals is correctly matched to the way they move?

	Swim	Run	Fly
(1)	Eel	Zebra	Penguin
(2)	Seahorse	Ostrich	Owl
(3)	Playtypus	Snake	Kingfisher
(4)	Sea lion	Tiger	Turkey

16. Study the flow chart below.



Which of the following animals can be used to replace **P**, **Q** and **R**?

	P	Q	R
(1)	Swan	Lobster	Goldfish
(2)	Ostrich	Monkey	Dolphin
(3)	Sparrow	Penguin	Whale
(4)	Penguin	Whale	Tortoise

17. Both animals and plants are living things. However, not all their characteristics are the same.

Which one of the following is a characteristic of plants but **not** animals?

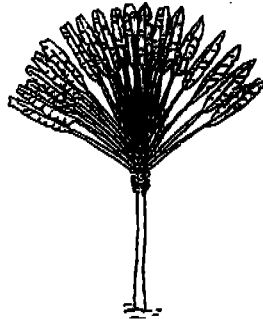
- (1) They can have young.
- (2) They cannot move on their own.
- (3) They need air, water and food to grow.
- (4) They do not depend on other living things for food.

(Go on to the next page)

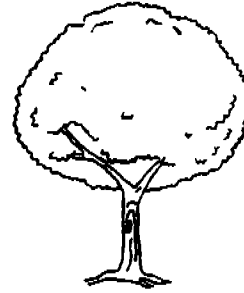
18. One of the uses of plants is to provide shade.

Which one of the following plants will give us the most shade?

(1)



(2)



(3)



(4)



19. The picture below shows a plant.



Which one of the following statements about the plant is incorrect?

- (1) The plant has weak stem.
- (2) The plant is a non-flowering plant.
- (3) The plant has entire-edged leaves.
- (4) The leaves of the plant are heart-shaped.

(Go on to the next page)

20. The pictures below show a tomato and a kiwifruit.

tomato



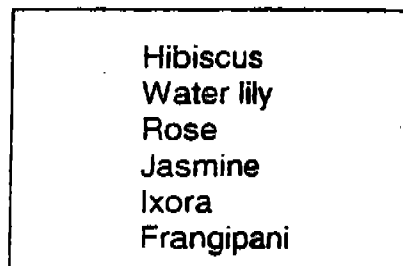
kiwifruit



How are the two fruits shown above similar?

- (1) Both have thick skin.
- (2) Both have hairy skin.
- (3) Both have a few seeds.
- (4) Both have edible seeds.

21. Bernice went to the Science garden and saw the following flowers.



How many of the flowers that Bernice saw grow singly?

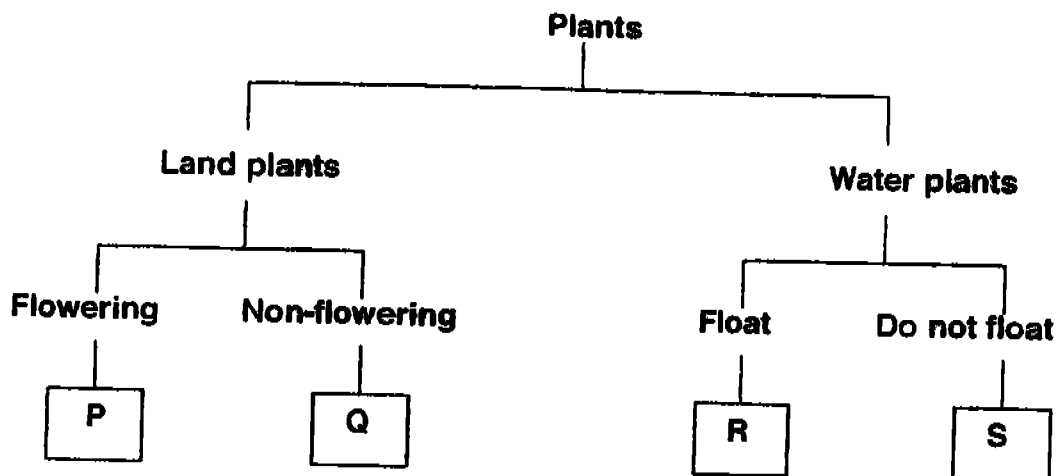
- (1) Two
- (2) Three
- (3) Four
- (4) Five

22. Which part of the sweet potato plant is edible?

- (1) Fruits and leaves
- (2) Fruits and roots
- (3) Roots and leaves
- (4) Flower and leaves

(Go on to the next page)

23. Study the classification table below.



Which one of the following would P, Q, R and S most likely be?

	P	Q	R	S
(1)	Bougainvillea	Balsam	Duckweed	Water lily
(2)	Balsam	Bougainvillea	Water lettuce	Water hyacinth
(3)	Balsam	Ladder fern	Water hyacinth	Hydrilla
(4)	Bougainvillea	Cow grass	Water lily	Cattail

24. Justin saw a particular plant in his garden and he wrote down the following description of the plant.

It grows on tree branches.
 It does not have flowers.
 It has long and broad leaves.
 It has no branches or stems
 Tiny spots are found on the leaves.

Which of the following is most probably the plant Justin saw?

- (1) Maidenhair fern
- (2) Stag's horn fern
- (3) Bird's nest fern
- (4) Water moss fern

(Go on to the next page)

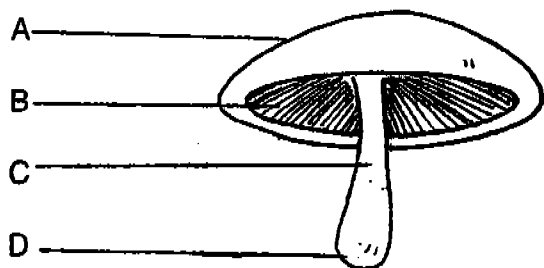
25. Where can fungi be found?

- A : Rotting trunks
- B : Sawdust
- C : Drains
- D : Stale bread

- (1) A and B only
- (2) A and D only
- (3) A, B and D only
- (4) A, C and D only

Refer to the picture below to answer questions 26 and 27.

26. The picture below shows a mushroom.



Where are the spores found?

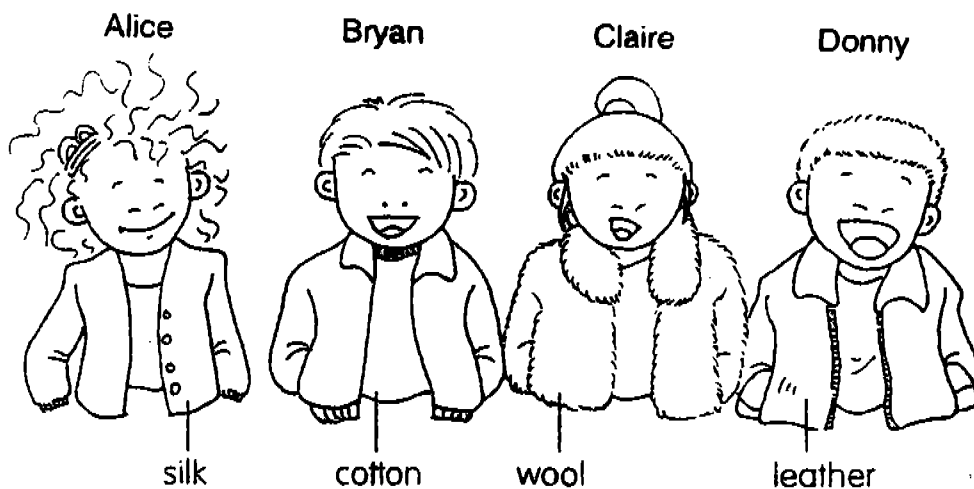
- (1) A
- (2) B
- (3) C
- (4) D

27. Which one of the following statements about spores is incorrect?

- (1) They are very tiny and look like brown dust.
- (2) They help fungi to reproduce.
- (3) They provide food for the fungi.
- (4) They are stored in spore bags.

(Go on to the next page)

28. The four children below are wearing jackets made of different materials.



Which one of these statements is true about the materials of the jackets?

- (1) The materials used are from animals.
 - (2) The materials used are all water-proof.
 - (3) All the jackets are made from natural material.
 - (4) The materials used can keep the children warm in cold weather.
29. Kennard wants to buy his mum a chair. However, he has to consider the following things.

It must be waterproof.

It must not be heavy.

It has to be durable.

It must allow some light to pass through it.

Which one of the following materials is the chair most likely made of?

- | | |
|-------------|-----------|
| (1) Wood | (2) Metal |
| (3) Plastic | (4) Clay |

(Go on to the next page)

30. Study the classification table below.

Objects	
Group S	Group T
matchstick	nail
toothpick	coin

How are the objects in Group S different from that in Group T?

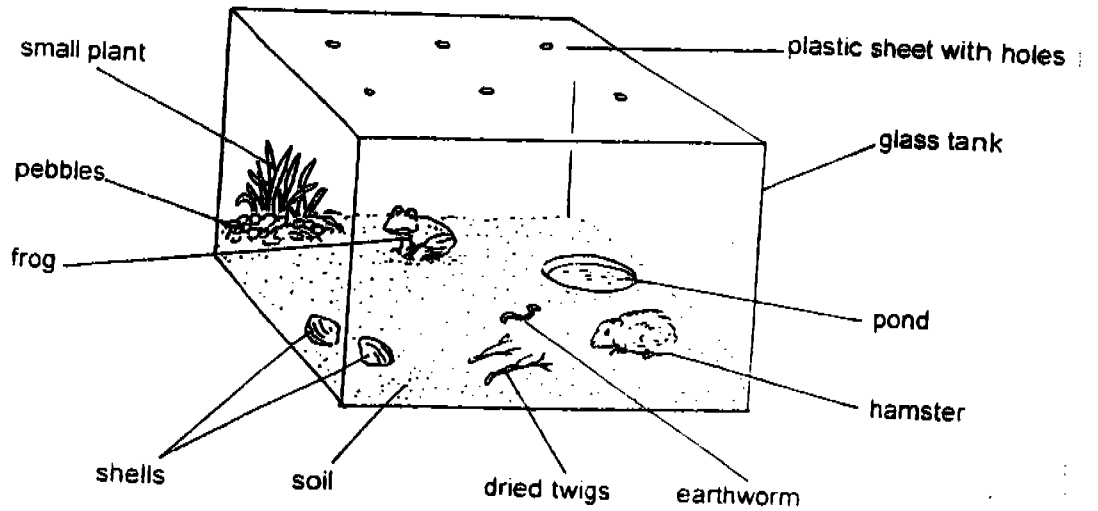
- (1) Objects in Group S float while those in Group T sink.
- (2) Objects in Group S are flexible while those in Group T are not.
- (3) Objects in Group S are made soft while those in Group T are hard.
- (4) Objects in Group S are made from natural materials while those in Group T are not.

End of Part I

PART II (40 MARKS)

For questions 31 to 46, write your answers in this booklet.

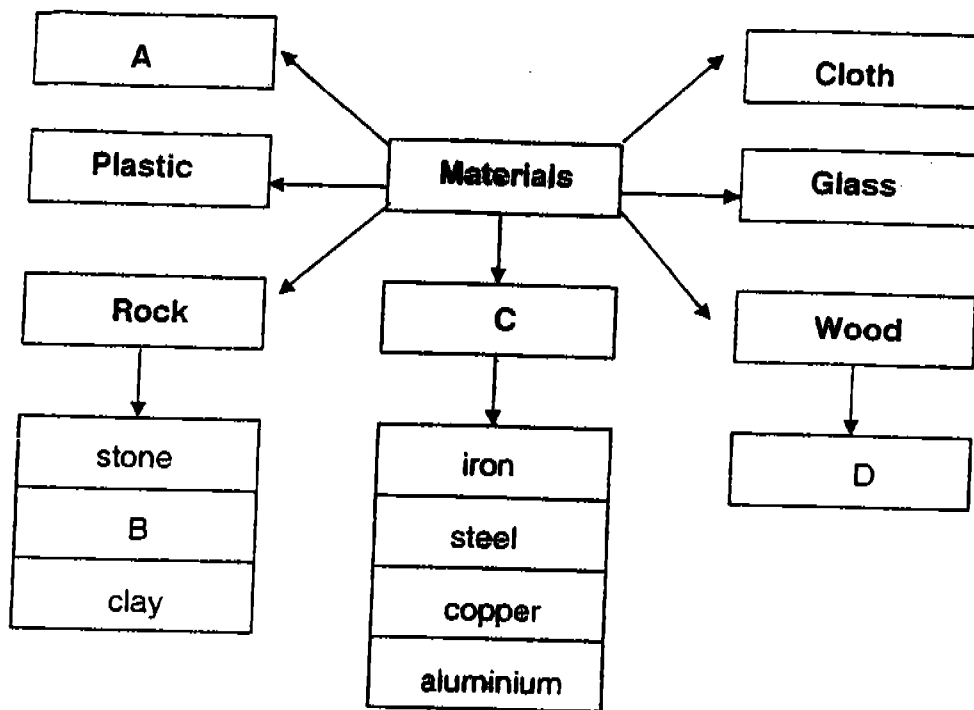
31. The diagram below shows a tank with a number of things.



(a) Name all the living things in the tank. (2 mark)

(b) What would happen if there were no holes in the plastic sheet?(1 mark)

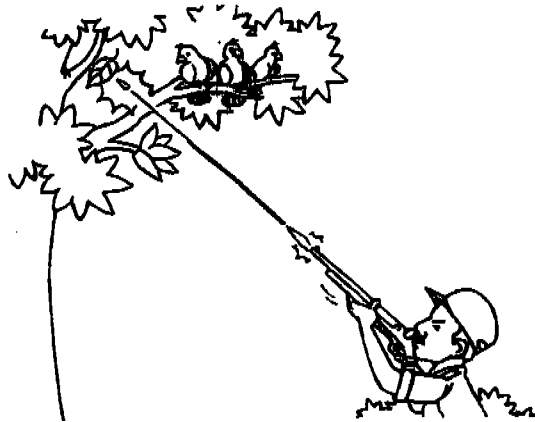
32. Study the diagram below.



Write the letter in the box which represents the following: (2 marks)

- (a) Paper:
- (b) Rubber:
- (c) Metal:
- (d) Sand:

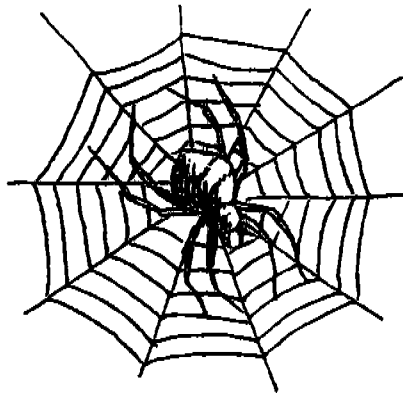
33. The diagram below shows a hunter aiming at the birds on the tree branch. He fires a shot but misses the birds.



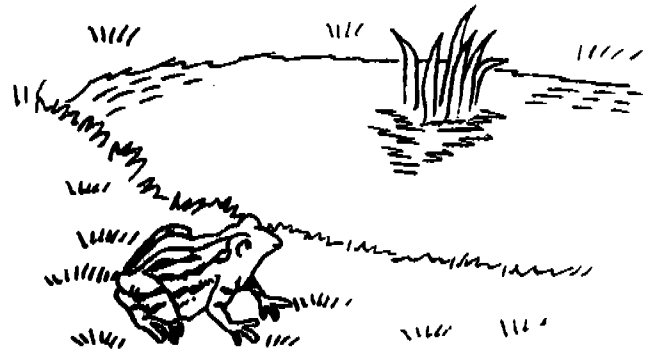
- (a) What do you think the birds will do when they hear the gun shot?
(1 mark)

- (b) What can you say about living things based on your answer in (a)?
(1 mark)

34. Study the pictures of the two animals shown below.



Spider



Frog

State one similarity and one difference between these two animals.(2 marks)

(a) Similarity: _____

(b) Difference: _____

35. Study the groups of animals listed below carefully.

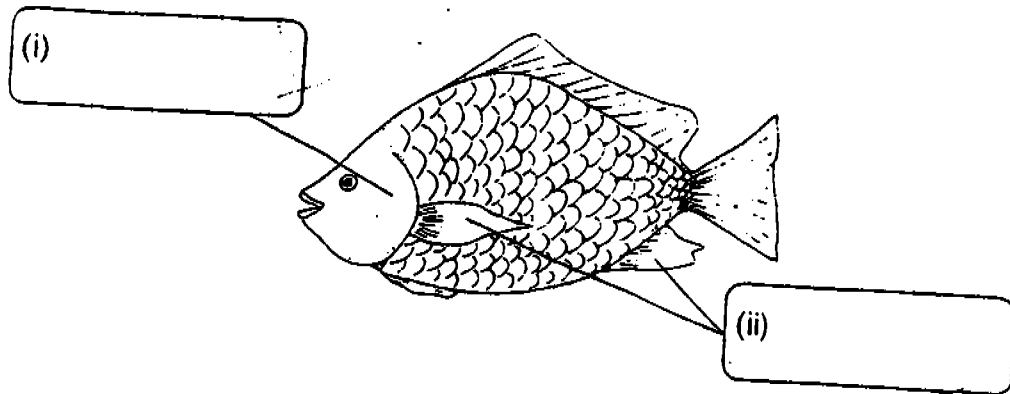
Group A	Group B	Group C
Cow	Pig	Tiger
Squirrel	Rat	Eagle
Rabbit	Monkey	Shark

- (a) How are the above animals grouped? (1 mark)

They are grouped according to _____

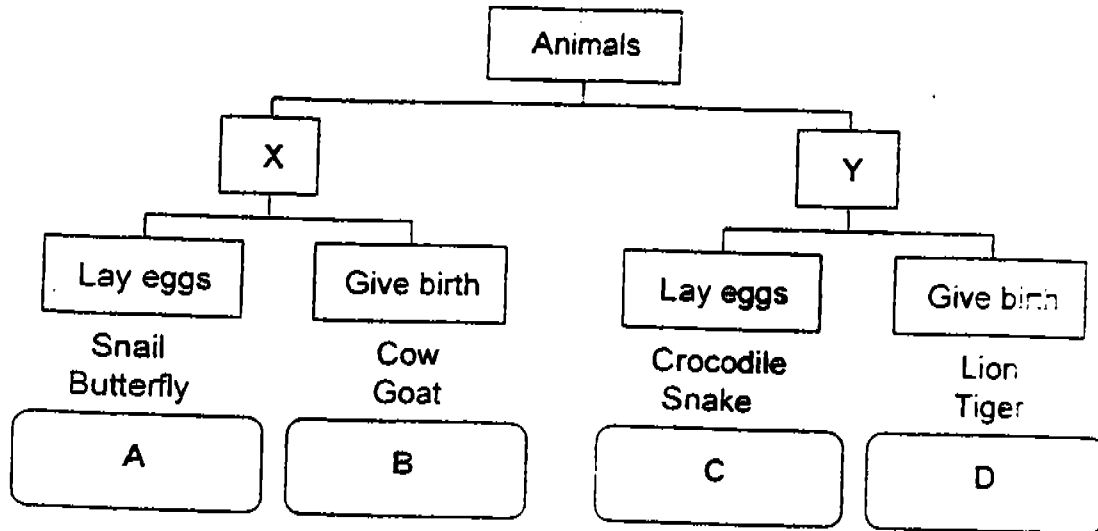
- (b) State one common characteristic between the animals in Group A and the animals in Group B. (1 mark)

36. (a) Label the parts of the fish shown below.(1 mark)



(b) Name a fish that gives birth to its young alive.(1 mark)

37. Study the classification table below.



(a) Give suitable headings for X and Y.(2 marks)

X : _____

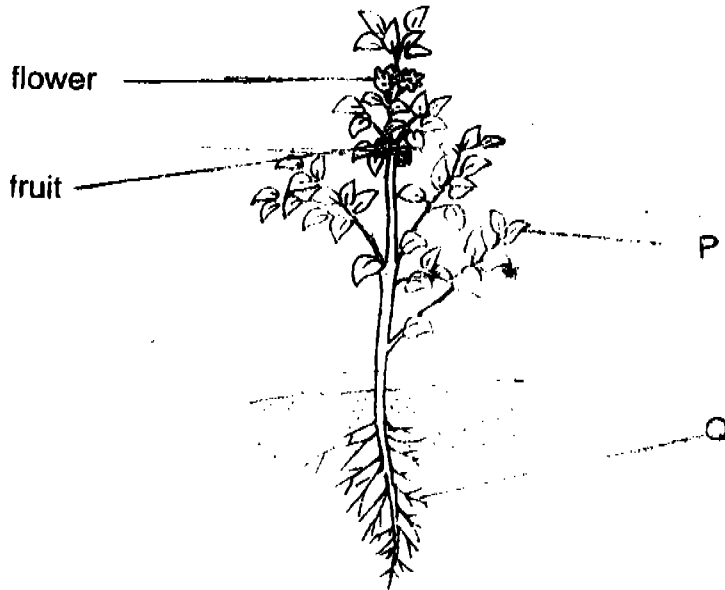
Y : _____

(b) From the table above, write the letters (A, B, C or D) to represent 'Horse' and 'Owl'.(1 mark)

(i) Horse : _____

(ii) Owl : _____

38. Look at the picture of a plant shown below.



(a) Identify the parts labelled.(1 mark)

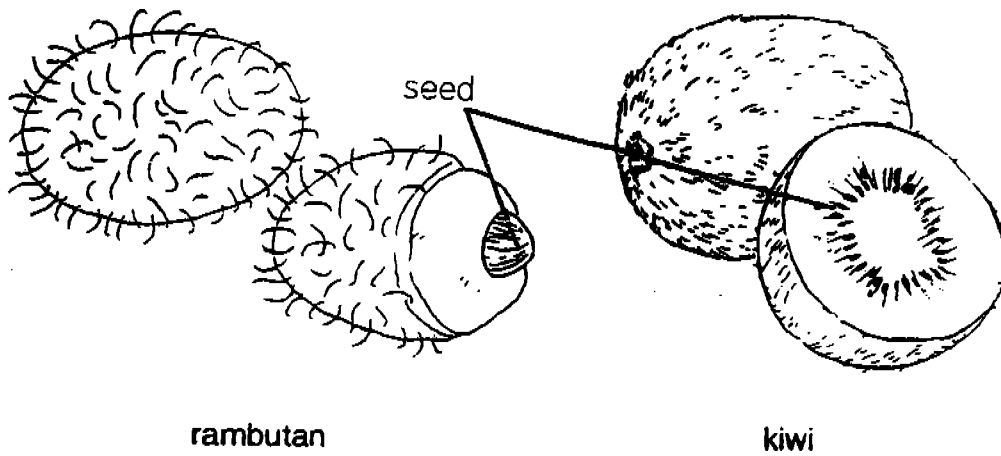
(i) P : _____

(ii) Q : _____

(b) How is P important to the plant?(1 mark)

(c) Does this plant reproduce from seed? (Give an example for your answer. (Give your answer based on what you can see in the picture.) (1 mark)

39. The pictures below show a rambutan and a kiwi.

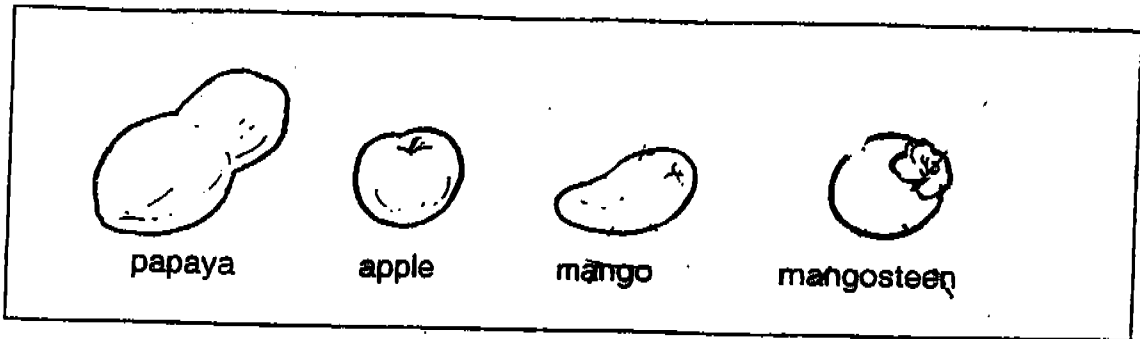


Based on only what you can see from the pictures, write down one similarity and one difference about the two fruits. (2 marks)

(a) Similarity : _____

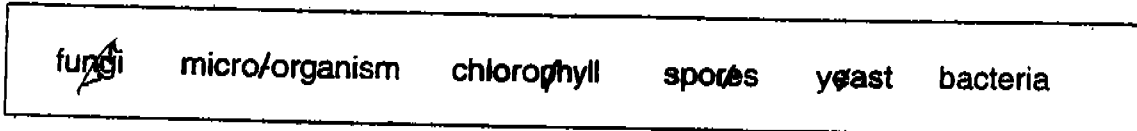
(b) Difference : _____

40. Study the fruits shown below.



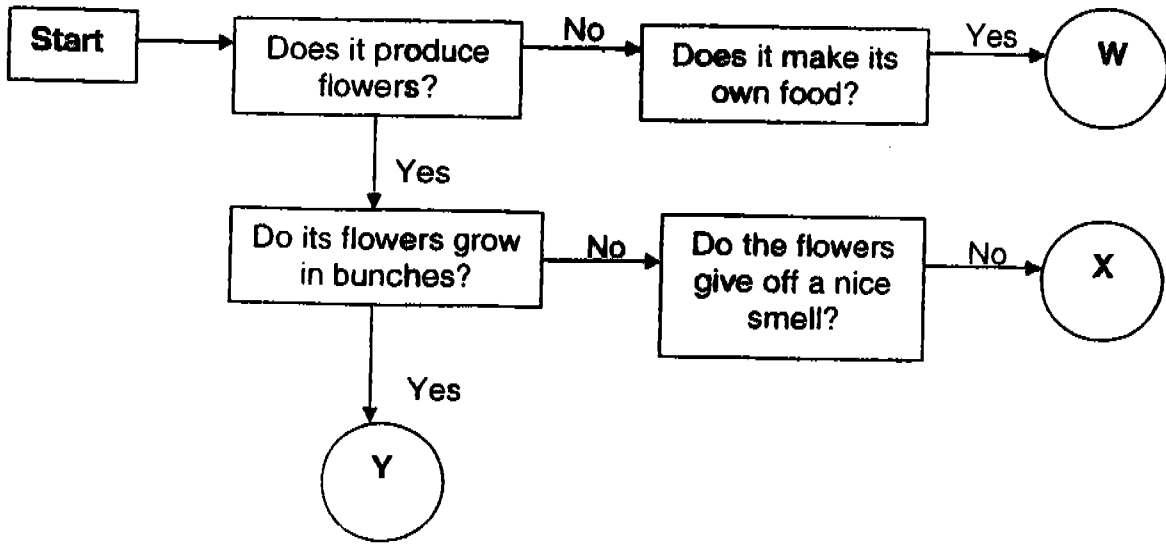
- (a) Put a cross (X) on the fruit that does not belong to the group. (1 mark)
- (b) Write down the reason the crossed fruit in (a) is different from the rest of the fruits. (1 mark)

41. Fill in each blank with a suitable word from the box. (2 marks)



- (a) _____ are a group of living things which are so small that they can only be seen through a microscope.
- _____ is an example of this group of micro-organisms which is often used by bakers to make their bread and cakes fluffy.
- (b) Fungi do not have seeds and they reproduce from _____
- They also do not make their own food as they do not have _____ which all green plants do.

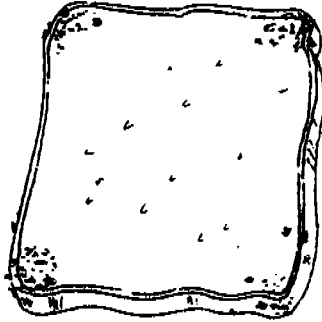
42. Study the flow chart below.



Identify the following plants in the flow chart. (3 marks)

- Rafflesia : _____
- Frangipani : _____
- Moss : _____

43. The picture below shows a piece of bread left on the kitchen table for 2 weeks.



(a) What can be found growing on the piece of stale bread after 2 weeks?
(1 mark)

(b) Which group of living things do they belong to? (1 mark)

(c) Name two other living things that reproduce in the same way.
(2 marks)

(i) _____

(ii) _____

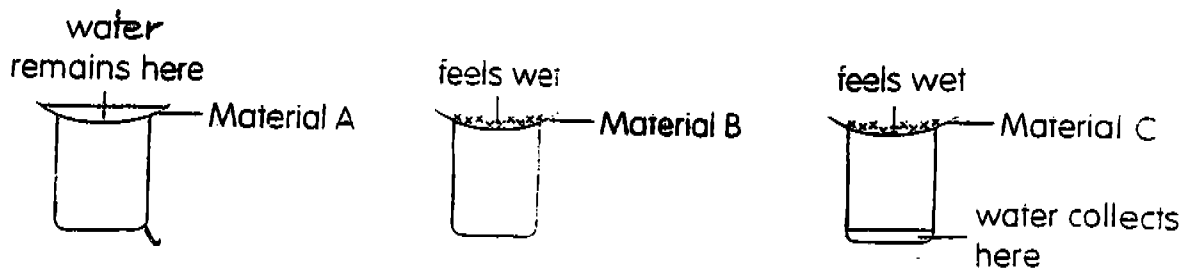
44. The picture below shows a pair of swimming goggles.



Name a **suitable** material used for each part and state why it is the **most suitable** material to use. (4 marks)



	Material used	This material is most suitable because
E		
F		

45. Caleb wanted to find out which of the 3 materials absorbs the most amount of water. He placed a piece of each of the 3 materials over the mouths of the three containers. He then poured a 10 ml of water onto each material. The pictures below show what he observed.



- (a) Based on the results that Caleb had observed, which material could absorb the most amount of water? (1 mark)
- _____
- (b) Based on the results gathered, which material is most suitable for making clothes for wiping dry bowls and plates?(1 mark)
- _____

46. Name the material used to make the following objects. (2 marks)

Object	Material used
(a)  a dress	
(b)  A fish tank	

End of Paper

**ROSYTH SCHOOL
FIRST SEMESTRAL ASSESSMENT FOR 2005
SCIENCE
PRIMARY THREE**

- | | |
|-------|---|
| 1) 3 | 28) 3 |
| 2) 3 | 29) 3 |
| 3) 1 | 30) 1 |
| 4) 2 | 31) The living things are hamster, earthworm,
frog and small plant. |
| 5) 1 | |
| 6) 3 | b) The living things inside the tank will
all die. |
| 7) 1 | |
| 8) 2 | 32) a) D |
| 9) 4 | b) A |
| 10) 4 | c) C |
| 11) 4 | d) B |
| 12) 3 | 33) The birds will all fly away. |
| 13) 2 | b) They respond to changes |
| 14) 3 | 34) a) They both eat insects. |
| 15) 2 | b) A frog can live in both land and water
but a spider cannot live in water. |
| 16) 4 | 35) a) to the types of food they eat. |
| 17) 4 | b) They both have hair on their bodies. |
| 18) 4 | |
| 19) 2 | 36) i) gill cover |
| 20) 4 | ii) fins |
| 21) 2 | b) It is a guppy. |
| 22) 3 | 37) a) X : herbivore |
| 23) 3 | Y : carnivore |
| 24) 3 | b) i) B |
| 25) 3 | ii) C |
| 26) 2 | 38) a) i) leaf |
| 27) 3 | ii) roots |

- b) Without a leaf, the plant would not have chlorophyll.
- c) It reproduces by seed, I see roots, the roots come from the seed, so if not how does it grow.

39) a) They are both hairy.

b) Rambutan has one seed, but Kiwi has many seeds.

40) a) Mango

b) A mango has one seed.

41) Micro-organism

Yeast

b) spores

chlorophyll.

42) X

Y

W

43) a) You can find mould growing on the bread.

b) They belong to fungi.

c) i) mushroom

ii) Moss.

44) E : Plastic As if we drop on the floor, it will not break.

F : Rubber It is stretchable.

45) a) Material B

b) Material B

46) a) Cloth

b) Glass