



MAHA BODHI SCHOOL
2005 SEMESTRAL ASSESSMENT 1
PRIMARY 3 SCIENCE

Name: _____ ()

Date: 12 May 2005

Class: Primary 3 ()

BOOKLET A

30 Questions

30 marks

Total Time for Booklets A & B: 1 h 30 min

Instructions to Candidates

Do not open this booklet until you are told to do so.

Follow all instructions carefully.

Check all the pages carefully to make sure that all the questions are in order.

Answer all the questions.

If a question is difficult, go on to the next one. Do not waste time.

This booklet consists of 9 pages, excluding the cover sheet.

PART I (30 marks)

For each question from 1 to 30, four options are given. One of them is the correct answer. Make your choice (1, 2, 3 or 4). Shade the correct oval (1, 2, 3 or 4) on the Optical Answer Sheet (OAS).

1. Living things can be found _____.

- A: in water
- B: on trees
- C: in the soil

- (1) A and B only
- (2) A and C only
- (3) B and C only
- (4) A, B and C

2. Which one of the following pairs of objects are made from the same type of material?

- (1) Balloon and eraser
- (2) Envelope and key
- (3) Floor tile and gold chain
- (4) Window pane and curtain

3. Study the table below.

Objects	
Float on water	Sink in water
X	Gold chain
Wood	Y

What can objects X and Y be?

	X	Y
(1)	Styrofoam cup	Glass mug
(2)	Safety pin	Sewing needle
(3)	Watch	Button
(4)	Paper clip	Cork

4. Which one of the following animals is a mammal that can fly?

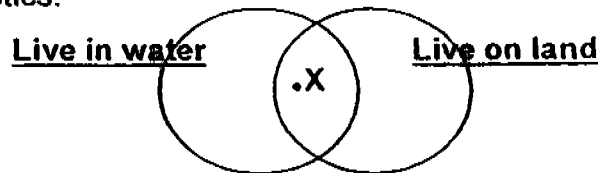
- (1) Bat
- (2) Penguin
- (3) Butterfly
- (4) Ostrich

5. Which of the following things can reproduce by themselves?

- A: Rock
- B: Pencil
- C: Parakeet
- D: Sunflower

- (1) A and B only
- (2) B and C only
- (3) C and D only
- (4) A, B, C and D

6. In the Venn diagram below, X represents a group of animals with similar characteristics.

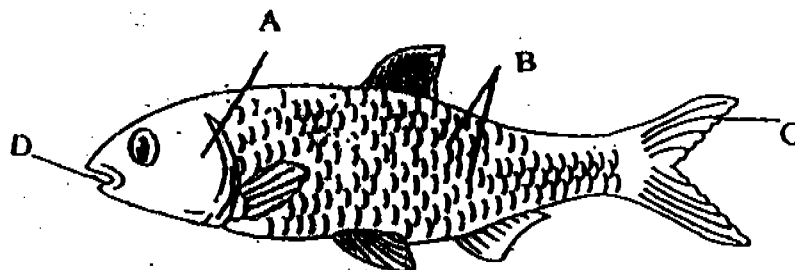


Which of the following animal(s) belong to Group X?

- A: Lion
- B: Frog
- C: Prawn
- D: Butterfly

- (1) B only
- (2) B and C only
- (3) C and D only
- (4) A, B, C and D only

7. Part _____ helps the fish to move in water.



- (1) A
- (2) B
- (3) C
- (4) D

8. Which one of the following animals does not have the same kind of outer covering as the others?
- (1) Sheep
 - (2) Squid
 - (3) Hamster
 - (4) Platypus

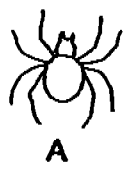
9. The deer and the monkey are animals that live in the forest. They are similar because both of them _____.
- (1) are plant eaters
 - (2) are animal eaters
 - (3) give birth to their young alive
 - (4) do not have any outer covering

10. In what way is a dolphin similar to a whale?



- (1) Both have scales.
 - (2) Both are fish.
 - (3) Both eat meat.
 - (4) Both are mammals.
11. Which one of the following lists of characteristics belongs to a fish?
- (1) It can swim, has scales and breathes through gills.
 - (2) It has scales, breathes through lungs and lays eggs.
 - (3) It has hair on its body, has a tail and can fly.
 - (4) It has a beak, lays eggs and has feathers.

12. Which one of the following cannot be an insect?



A



B



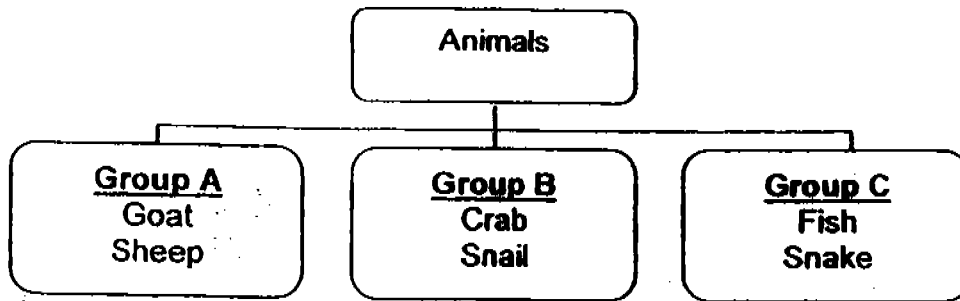
C



D

- (1) A
- (2) B
- (3) C
- (4) D

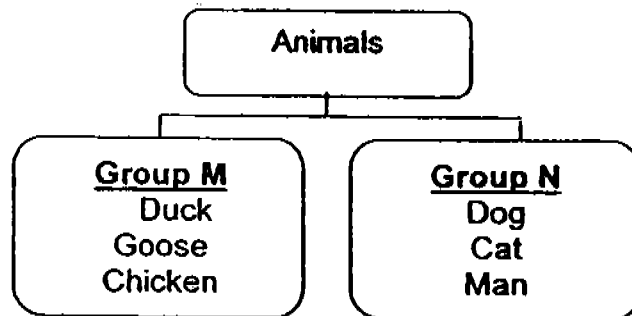
13. Study the classification chart below.



The animals are grouped according to _____.

- (1) the places they live
- (2) the ways they move around.
- (3) the types of food that they eat
- (4) the types of outer covering they have

14. Study the classification chart below.



Which one of the following sets of headings for Groups M and N is correct?

	Group M	Group N
(1)	Plant eaters	Animal eaters
(2)	Land animals	Sea Animals
(3)	Mammals	Fish
(4)	Birds	Mammals

15. Look at the following plants. One of them is different from the rest.

Fern

Rose Plant

Orchid Plant



Which one of the following lists states correctly why the plant is different?

	Plant	It is different from the rest because
(1)	Fern	it is non-flowering
(2)	Fern	it is woody
(3)	Rose Plant	it is poisonous
(4)	Orchid Plant	it cannot be eaten

16. Which one of the following is a water plant?

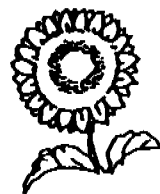
(1) Rose Plant

(2) Lotus



(3) Hibiscus Plant

(4) Sunflower Plant



17. Which one of the following statements is true about a fruit?

- (1) It is surely edible.
- (2) It protects the seeds.
- (3) It can grow into a new plant.
- (4) It takes in water and mineral salts.

18. Which one of the following statements describes the leaf below correctly?



- (1) It is palm-shaped.
- (2) It is oval-shaped.
- (3) It has a jagged edge.
- (4) It has an entire edge.

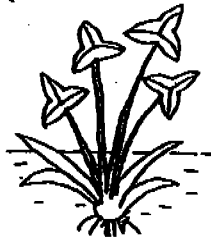
19. Which of the following statement(s) is/are true about leaves?

- A: Some leaves can be eaten.
- B: Some leaves can be used for wrapping food.
- C: Some leaves can be used for making drinks.

- (1) A only
- (2) B only
- (3) B and C only
- (4) A, B and C

20. Which one of the following is a partially submerged plant?

(1) Arrowhead



(3) Cabomba



(2) Hydrilla



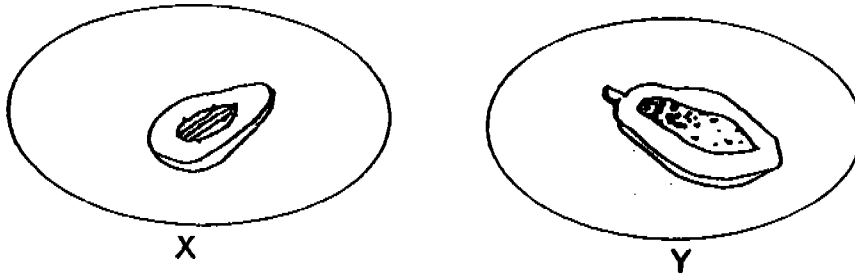
(4) Water hyacinth



21. All plants have chlorophyll which helps them to _____.

- (1) bear fruits
- (2) take in air
- (3) store food
- (4) make food

22. Some fruits can be classified into two groups as shown below.



Which one of the following fruits can be placed in Group 'X' and 'Y'?

- (1)
- (2)
- (3)
- (4)

X	Y
Tomato	Lychee
Lychee	Longan
Durian	Longan
Rambutan	Watermelon

23. _____ are examples of fungi.

- A: Mould
- B: Algae
- C: Bacteria
- D: Mushroom

- (1) A and D only
- (2) A and C only
- (3) B and C only
- (4) B and D only

24. Mabel sees an animal lying still in the garden. To find out whether it is still alive, she should check if _____ when she touches it.

- (1) it moves
- (2) it reproduces
- (3) it gives off a smell
- (4) all its body parts are present

25. Jew's ear and bread mould are both fungi. How is the Jew's ear similar to the bread mould?

- A: Both reproduce by spores.
- B: Both do not contain chlorophyll.
- C: Both cannot make its own food.

- (1) A and B only
- (2) B and C only
- (3) A and C only
- (4) A, B and C

26. The diagram below shows how most leaves look like from the top. The leaves are arranged in this way to allow them to _____ so that plants can grow healthi

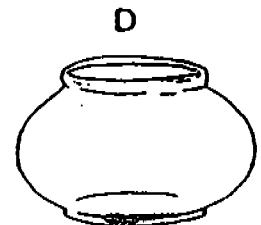
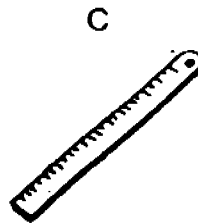
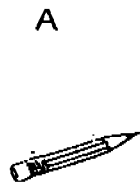


- (1) give us shade
(2) protect the stem
(3) get as much sunlight as possible
(4) collect as much water as possible
27. Shopping bags are usually made of plastic because plastic _____.

- A: is light
B: is waterproof
C: does not tear easily
D: is transparent

- (1) A and D only
(2) B and C only
(3) A, B and C
(4) A, B, C and D

28. Which of the following objects is made up of more than one material?

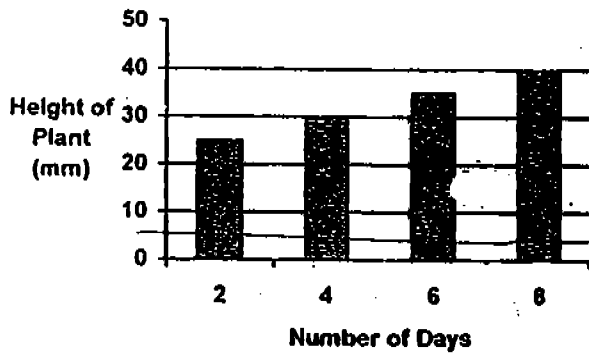


- (1) A and B only
(2) A and C only
(3) B and C only
(4) C and D only

29. Mother bought an object.
It is made from a soft material.
It is not waterproof.
It does not allow us to see through it.
What can the object be?

- (1) Mug
(2) Mirror
(3) Towel
(4) Fish bowl

30. Study the bar graph below.



What is the likely height of the plant on Day 5?

- (1) 25 mm
- (2) 33 mm
- (3) 40 mm
- (4) 45 mm

END OF PART I



MAHA BODHI SCHOOL
2005 SEMESTRAL ASSESSMENT 1
PRIMARY 3 SCIENCE

Name: _____ ()

Date: 12 May 2005

Class: Primary 3 ()

BOOKLET A

10 Questions

20 marks

Total Time for Booklets A & B: 1 h 30 min

Instructions to Candidates

Do not open this booklet until you are told to do so.

Follow all instructions carefully.

Check all the pages carefully to make sure that all the questions are in order.

Answer all the questions.

If a question is difficult, go on to the next one. Do not waste time.

This booklet consists of 5 pages, excluding this page.

	Max. Marks	Actual Marks
Booklet A	30	
Booklet B	20	
Total	50	
	100	
Parent's Signature		

PART II (20 marks)

Write your answers to questions 31 to 40 in this booklet.

31. Write True or False for each of the statements below.

- | | <u>True/False</u> |
|---|-------------------|
| (a) Non-living things respond to changes. | _____ |
| (b) All living things can make their own food. | _____ |
| (c) Living things can be classified into two groups only. | _____ |
| (d) Living things need air, water and food to stay alive. | _____ |

[2]

32. In the table below, classify the following living things according to the place where they live.

Provide a suitable heading for each group and put 2 animals under each heading.

[2]

Bee



Guppy



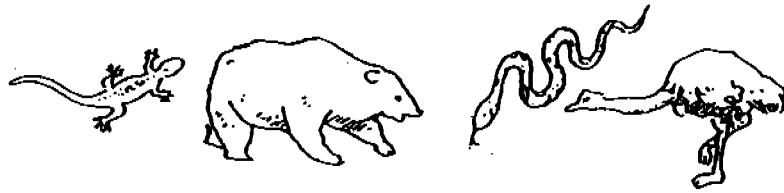
Goldfish



Butterfly



33. Four different animals are shown below.



How does each animal move? State one way for each animal.

- (a) Lizard : _____
- (b) Bear : _____
- (c) Snake : _____
- (d) Ostrich : _____

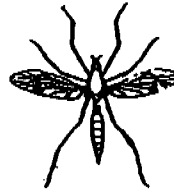
[2]

34. Study the two animals, A and B, below carefully. (Do not compare size, shape or colour.)

Animal A



Animal B



(i) Write one similarity between the two animals.

_____ [1]

(ii) Write one difference between the two animals.

_____ [1]

35. Fill in each blank with a suitable word of your own.

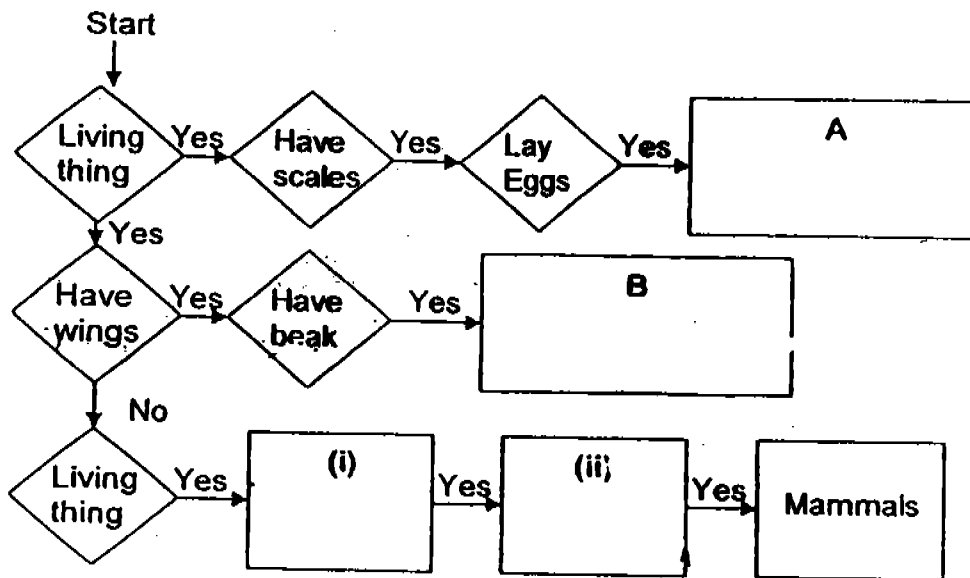
[2]

(i) The spiny anteater and platypus are _____ which lay eggs.

(ii) The body of an insect is divided into _____
and _____

36. Paul drew the following diagram carefully. The characteristics of some animal groups are stated below. Write the animal group in the boxes A and B. [1]

(a)



(b) Paul did not know the characteristics of mammals. Help him to state two of the characteristics below.

(i) _____ [1]

(ii) _____ [1]

37. In his science lesson, Jeack learnt that fruits have seeds. Which of the following are fruits? Put a tick (✓) in the box if it is a fruit. [1]

(i) Carrot



(ii) Chilli



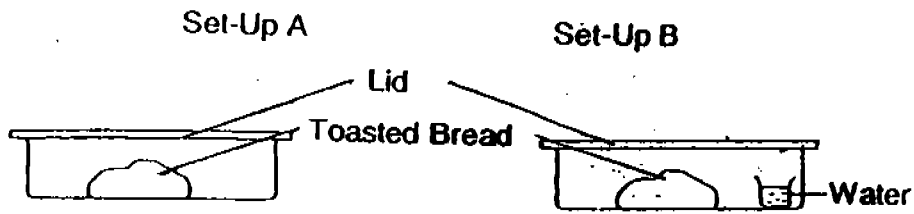
(iii) Tomato



(iv) Apple



38. Jim conducted an experiment using set-ups A and B.



After a few days, Jim noticed some tiny black dots on the bread in Set-up B but not in Set-up A.

(a) What are the tiny black dots?

_____ [1]

(b) What could Jim conclude from the experiment?

_____ [1]

39. During a discussion, Jim claimed that the penguin is a mammal. However, Jane said that the penguin is a bird.

(a) Who was right?

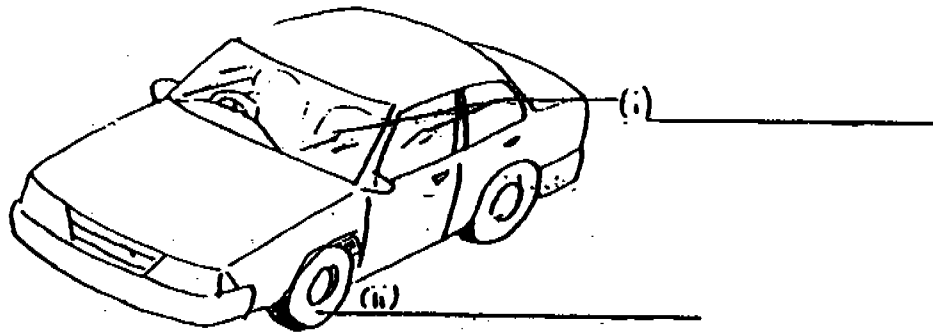
_____ [1]

(b) Give a reason for your answer in (a).

_____ [1]

40 The diagram of a car is shown below. (i) and (ii) are different materials used to make certain parts of the car.

(a) Fill in the blanks with the correct materials. [1]



(b) State one reason why material (i) is used to make that part of the car.

[1]

END OF PAPER

Have you checked your answers thoroughly?

MAHA BODHI PIMARY SCHOOL
PRIMARY 3 SCIENCE 2005
SEMESTRAL ASSESSMENT 1

ANSWER SHEETS

- 1. 4
- 2. 1
- 3. 1
- 4. 1
- 5. 3
- 6. 1
- 7. 3
- 8. 2
- 9. 3
- 10. 4
- 11. 1
- 12. 1
- 13. 4
- 14. 4
- 15. 1
- 16. 2
- 17. 2
- 18. 1
- 19. 4
- 20. 1
- 21. 4
- 22. 4
- 23. 1
- 24. 1
- 25. 4
- 26. 3
- 27. 3
- 28. 1
- 29. 3
- 30. 2

- 31. a) F
- b) F
- c) F
- d) T

32.

<u>Live on land</u>	<u>Live in water</u>
Bee	Gold fish
Butterfly	Guppy

- 33. a) walk
- b) walk/run
- c) glide/slither/wriggle
- d) ran

- 34. i) Animal A has no wings but B has wings
- ii) Animal A do not have wings, Animal B have wings.

- 35. i) mammal ii) head, thorax and abdomen

- 36. a) A) fish B) bird i) insects ii) mushroom
- b) i) Mammals have hair.
- ii) They give birth to their young alive

- 37. Chilli, Tomato, Apple

- 38. a) The tiny black dots are spores.
- b) Water moisture is needed for bread moulds to grow.

- 39. a) Jane is right
- b) Penguins have a beak, two legs and feathers.

- 40. a) i) Glass ii) Rubber
- b) It is transparent and so drivers can see through it.