

**MAHA BODHI SCHOOL**  
**2004 SEMESTRAL ASSESSMENT 1**

**SCIENCE**  
**PRIMARY 3**

SM

Name: \_\_\_\_\_ ( )

Date: 18 May 2004

Class: Primary 3 ( )

**BOOKLET A**

**30 Questions**

**60 marks**

**Total Time for Booklets A & B: 1 h 30 min**

**Instructions to Candidates**

**Do not open this booklet until you are told to do so.**

**Follow all instructions carefully.**

**Check all the pages carefully to make sure that all the questions are in order.**

**Answer all the questions.**

**If a question is difficult, go on to the next one. Do not waste time.**

**This booklet consists of 12 pages.**

**PART I (60 marks)**

For each question from 1 to 30, four options are given. One of them is the correct answer. Make your choice (1, 2, 3 or 4). Shade the correct oval (1, 2, 3 or 4) on the Optical Answer Sheet (OAS).

1. We use our sense of sight to observe the \_\_\_\_\_ of an object.

- (1) size, shape and colour
- (2) colour, mass and temperature
- (3) hardness, texture and shape
- (4) texture, size and temperature

2. Which of the following animals reproduce by laying eggs?

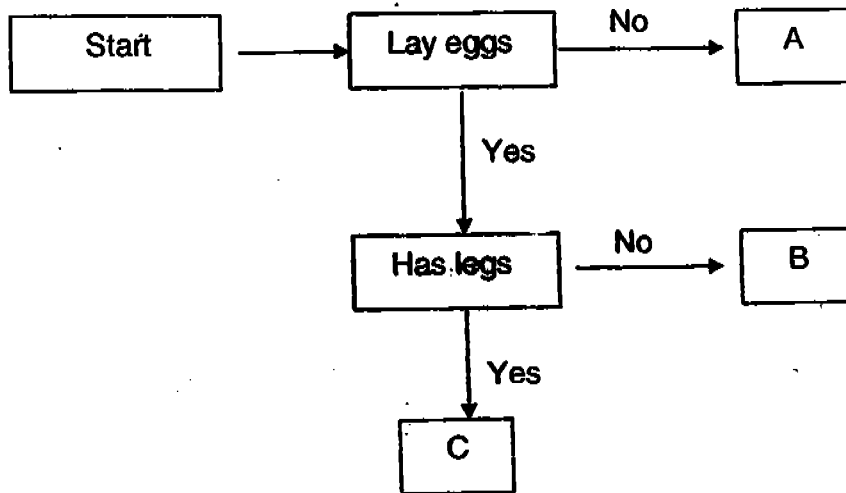
- (A) Toad
- (B) Mouse
- (C) Turtle
- (D) Lion
- (E) Crocodile

- (1) A, B and C only
- (2) A, C and E only
- (3) B, D and E only
- (4) A, C, D and E only

3. Non-living things \_\_\_\_\_.

- (1) need air, water and food
- (2) do not need air, water and food
- (3) can have young
- (4) can grow and die

4. Study the flow chart below.



What could Animal B be?

- (1) Ostrich
- (2) Snake
- (3) Cow
- (4) Frog

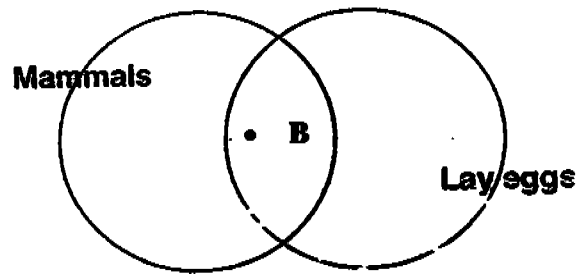
5. Which group of animals gives birth to their young alive?

- (1) Giraffe and crocodile
- (2) Whale and giraffe
- (3) Whale and crocodile
- (4) Whale, giraffe and crocodile

6. Which one of the following pairs of animals has the same type of body covering?

- (1) Toad and Turtle
- (2) Snail and Giraffe
- (3) Fish and Prawn
- (4) Duck and Penguin

7. Study the Venn diagram below.



Which one of the following correctly represents B?

- (1) Duck
  - (2) Cat
  - (3) Dolphin
  - (4) Platypus
8. A blind man is given a fruit. Which of the following senses does he use to find out if the fruit is long, sweet and fragrant?
- (A) Sight
  - (B) Smell
  - (C) Taste
  - (D) Touch
- (1) A and D only
  - (2) B and C only
  - (3) A, B and D only
  - (4) B, C and D only

9. Study the following descriptions about Animal X.

- The body of Animal X is covered with scales.
- Animal X breathes through gills.
- Animal X reproduces by laying eggs.

Which one of the following animal could be X?

- (1) Eagle
- (2) Tilapia
- (3) Mouse
- (4) Crocodile

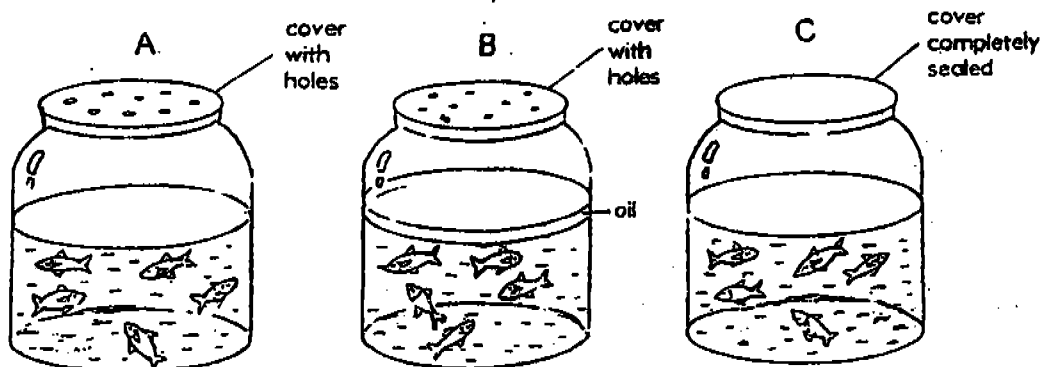
10. The table below shows some animals and their gestation period. The period between the time the animal becomes pregnant and the time its baby is born is called the gestation period.

Animal	Gestation Period (Days)
Mouse	19
Dog	61
Man	265
Elephant	645

Which one of the following statements is true?

- (1) The larger the animal, the longer the gestation period.
- (2) The gestation period is the same for all the four animals.
- (3) The gestation period is the same for animals of the same colour.
- (4) The gestation period of the mouse is longer than that of the dog.

11. Harani kept five fishes each in 3 separate jars as shown in the diagram. After some time, the fishes in jar B and jar C died but those in jar A were still alive. All the fishes were subjected to similar conditions except for those shown below.



What is the aim of the experiment?

- (1) To show that fishes need oxygen.
- (2) To show that fishes need sunlight.
- (3) To show that oil affects the growth of fish.
- (4) To show that fishes will die when oil is present.

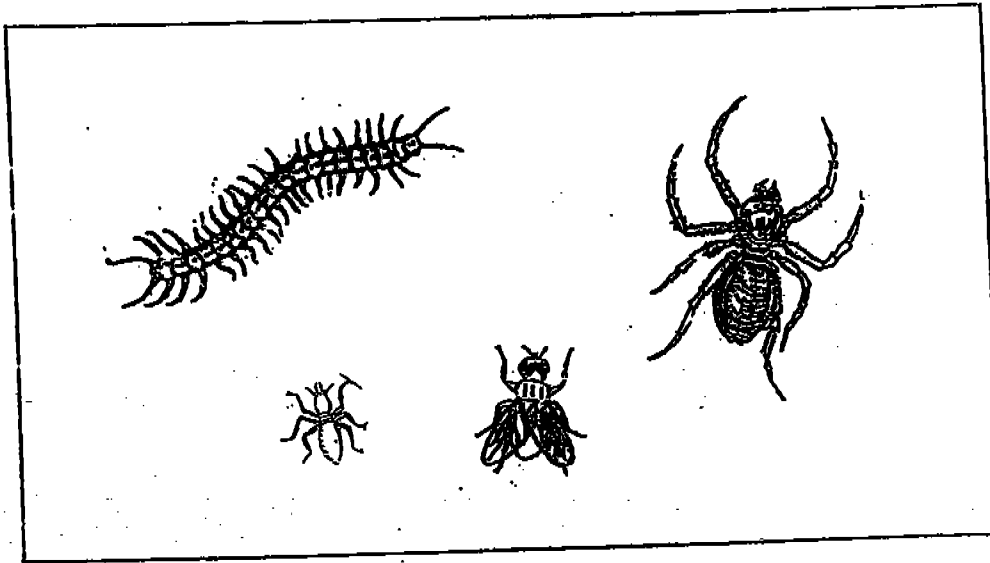
12. The table below shows the characteristics of four animals. A, B, C and D.

Animal	Number of legs				Feelers	Wings
	2	4	6	8		
A	√				x	√
B		√			x	x
C			√		√	√
D				√	x	x

Which animal is most likely to be an insect?

- (1) A
- (2) B
- (3) C
- (4) D

13. Study the animals in the box below.



The four animals shown above can be classified into two groups, A and B, such that there are two in each group.

How can the animals be classified?

	<b>Group A</b>	<b>Group B</b>
(1)	Live on land	Live in water
(2)	With wings	Without wings
(3)	With feelers	Without feelers
(4)	With 6 legs	With more than 6 legs

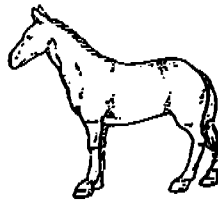
14. Which of the following animals eat plants only?



A



B



C



D

- (1) A and B only
- (2) B and D only
- (3) C and D only
- (4) A, B and C only

15. Which part of the plant helps to support its branches and leaves?

- (1) Roots
- (2) Fruits
- (3) Stem
- (4) Flowers

16. All plants are the same in one way. What is it?

- (1) They make their own food.
- (2) They reproduce from seeds.
- (3) They bear flowers and fruits.
- (4) They have stems to hold them upright.

17. Car tyres are made of rubber because it is \_\_\_\_\_.

- (1) black and transparent
- (2) flexible and transparent
- (3) black and waterproof
- (4) flexible and waterproof



18. Which one of the following plants is partly-submerged?

(1)



Cattail

(2)



Hydrilla

(3)



Duckweed

(4)

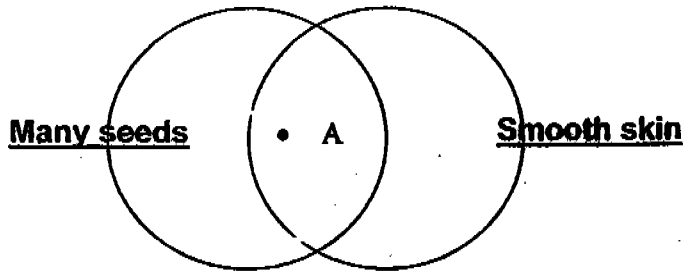


Water hyacinth

19. Which one of the following plants has a weak stem and needs a support to grow?

- (1) Rose
- (2) Balsam
- (3) Hibiscus
- (4) Morning glory

20. Study the Venn Diagram.



Which one of the following cannot be fruit A?

- (1) Mango
- (2) Papaya
- (3) Watermelon
- (4) Honeydew

21. Study the two groups of plants listed below.

X	Y
Rain tree	Lotus
Angsana tree	Water lily

Which one of the following are suitable headings for X and Y?

	X	Y
(1)	Water Plants	Land Plants
(2)	Land Plants	Water Plants
(3)	Flowering Plants	Non-flowering Plants
(4)	Non-flowering Plants	Flowering Plants

22. Study the table below. Which one of the following lists shows the correct characteristics of the plant?

		Flowering	Land
(1)	Bird's nest fern	√	√
(2)	Balsam	x	√
(3)	Ixora	√	√
(4)	Stag's horn fern	x	x

23. Which one of the following statements is not correct?

- (1) Plant parts may look different in different plants.
- (2) All plants have roots, stems, leaves, flowers and fruits.
- (3) Plants are living things which need air, water and food.
- (4) Plants can make their own food because they have chlorophyll.

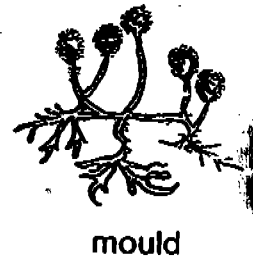
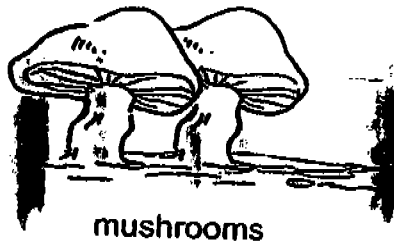
24. Micro-organisms can only be seen through the \_\_\_\_\_.

- (1) telescope
- (2) binoculars
- (3) microscope
- (4) magnifying glass

25. Which one of the following does not belong to the group of living things called fungi?

- (1) Moss
- (2) Mould
- (3) Toadstool
- (4) Jew's ears

26. Look at the two living things shown below.



How are they similar?

- A. They reproduce from spores.
- B. They cannot make their own food.
- C. They feed on plants and animals which are dead or alive.

- (1) A and B only
- (2) A and C only
- (3) B and C only
- (4) A, B and C

27. Which one of the following statements about the ~~living thing~~ below is not correct?

- (1) It is a fungus.
- (2) It makes its own food.
- (3) It reproduces from spores.
- (4) It does not have chlorophyll.

28. Which one of the following materials is man-made?

- (1) Wood
- (2) Plastic
- (3) Rubber
- (4) Leather

29. Which one of the following objects is not made of a material from plants?

- (1) Paper bag
- (2) Matchstick
- (3) Glass bottle
- (4) Rubber glove

30. Joanne bought an object.

- It is soft.
- It is not breakable.
- It is not waterproof.

What could the object be?

- (1) Bowl
- (2) Towel
- (3) Umbrella
- (4) Spectacles

END OF PART I

**MAHA BODHI SCHOOL**  
**2004 SEMESTRAL ASSESSMENT 1**  
**SCIENCE**  
**PRIMARY 3**

Name: \_\_\_\_\_ ( )

Date: 18 May 2004

Class: Primary 3 ( )

**BOOKLET B**

**11 Questions**

**40 marks**

**Total Time for Booklets A & B: 1 h 30 min**

**Instructions to Candidates**

**Do not open this booklet until you are told to do so.**

**Follow all instructions carefully.**

**Check all the pages carefully to make sure that all the questions are in order.**

**Answer all the questions.**

**If a question is difficult, go on to the next one. Do not waste time.**

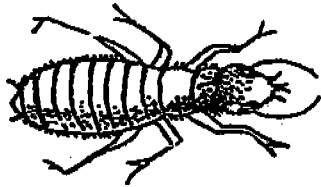
**This booklet consists of 9 pages.**

	Max. Marks	Actual Marks
Booklet A	60	
Booklet B	40	
Total	100	
Parent's Signature		

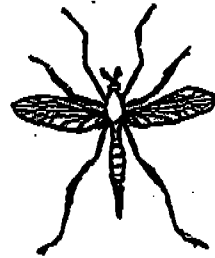
**PART II (40 marks)**

**Write your answers to questions 31 to 41 in this booklet.**

31. Based on the pictures given below, compare Animal A and Animal B.  
(Do not compare size, shape and colour)



**Animal A**



**Animal B**

- (a) State two ways in which they are similar.

---

---

- (b) State one way in which they are different.

---

---

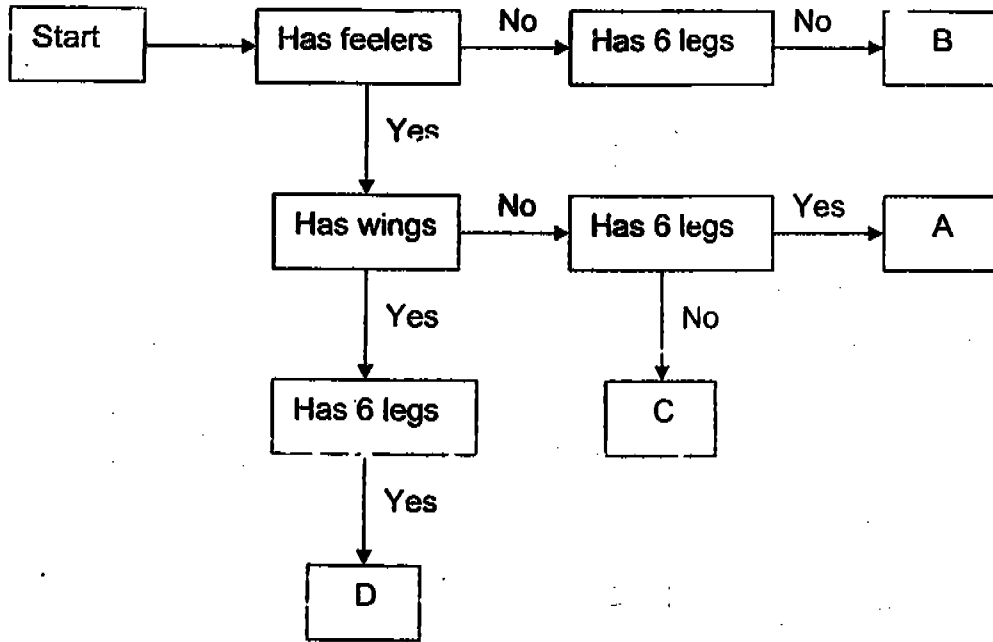
[1]




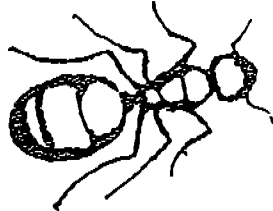
- (c) Why is the spider not classified in the same group of animals as Animals A and B?

---

---

32. In the chart below, A, B, C and D are animals with certain characteristics. Study the diagram carefully and identify the animals below by writing down the correct letter of each animal in the box next to it.



(i) 	(ii) 
(iii) 	(iv) 

[4]

33. Fill in the boxes with a suitable word of your own.

Sense Organ	Sense
Eyes	Sight
Skin	
Ears	
	Smell
	Taste

[4]

34. Jack said that the seed is a living thing but Peter said that the seed is a non-living thing.

(a) Who is right?

\_\_\_\_\_ [1]

(b) Why do you say so?

\_\_\_\_\_  
\_\_\_\_\_



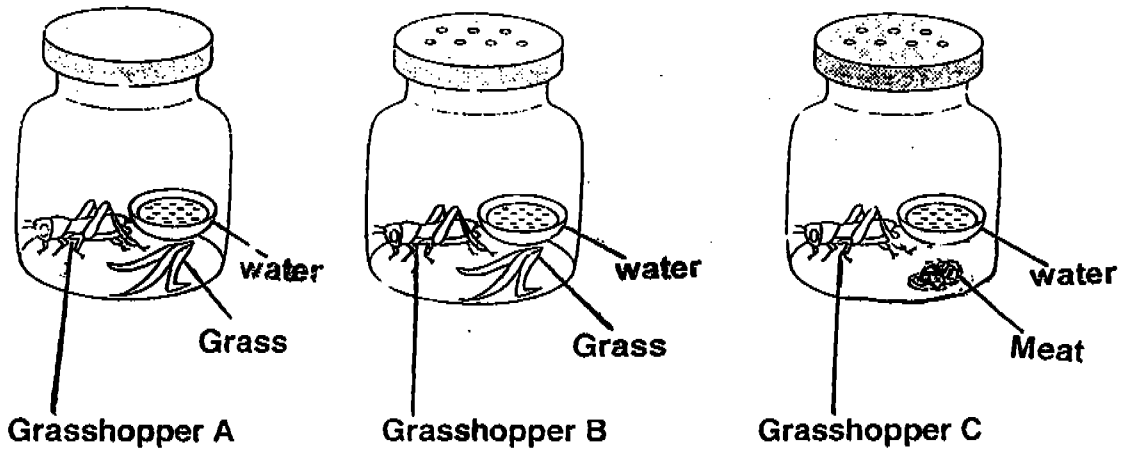
35. Group the following animals under the correct heading.

chicken                  caterpillar                  elephant                  frog

Plant eaters	Animal eaters	Plant and Animal eaters

[2]

36. Look at the pictures below. 3 similar grasshoppers are put into 3 containers as shown below.



(a) Which two grasshoppers will die first?

\_\_\_\_\_

(b) What are the two things that this experiment shows?

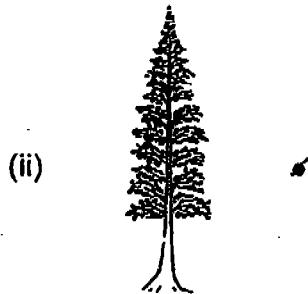
(i) \_\_\_\_\_

(ii) \_\_\_\_\_

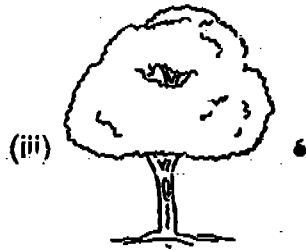
37. Delwin observed some plants in the park near his home. He realised that they have different shapes. Help him match each plant with a word that describes its shape.



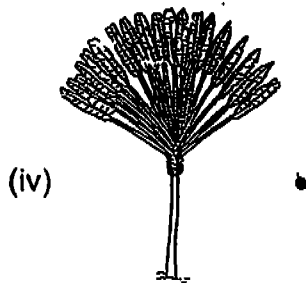
◀ cone-shaped



◀ dome-shaped



• umbrella-shaped



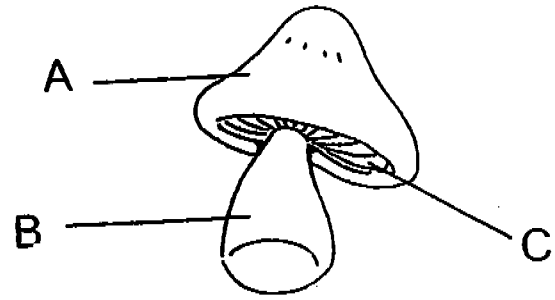
◀ fan-shaped

[2]

38. The diagram below shows a mushroom.

(i) Name the parts A, B and C.

A: \_\_\_\_\_  
B: \_\_\_\_\_  
C: \_\_\_\_\_

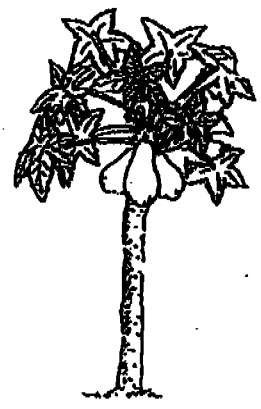


[3]

(ii) Which group of living things is it?

\_\_\_\_\_ [1]

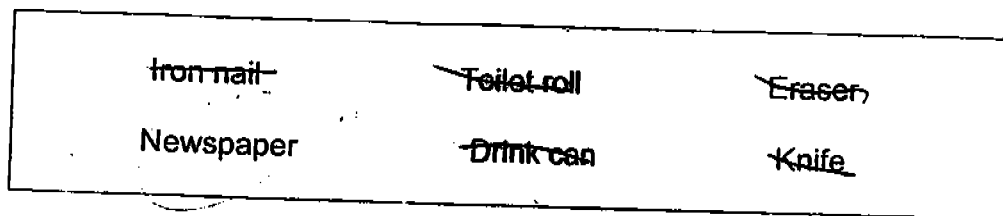
39. The diagram below shows a papaya tree. How do you know that it is a flowering plant even though there are no flowers on it?



\_\_\_\_\_  
\_\_\_\_\_

[2]

40.(a) Group the objects in the box according to the materials they are made of.



Rubber	Wood	Metal

[3]

(b) (i) There is an object above that can be made of two materials or just one material. Which object is it?

---

(ii) Which two materials could this object be made of?

---

[2]

(c) Other than the one stated above, name another object that is made of two materials.

---

[1]

41. Material Y has the following properties:

- It is hard.
- It is easily breakable.
- It is waterproof.
- We can see through it.

(a) What could Material Y be?

---

[1]

(b)(i) Is Material Y suitable for making water bottles for children?

---

(b)(ii) Give a reason for your answer in (b)(i).

---

[1]

(c) Name one object which could be made of Material Y.

---

END OF PAPER

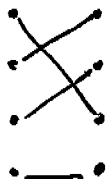

SAN

MAHA BODHI SCHOOL  
2004 SEMESTRAL ASSESSMENT 1  
PRIMARY 3 SCIENCE

41) b) i) No. Material Y is not suitable for making water bottles.

ii) Material Y is easily broken.

c) A windowpane could be made from Material Y.

- 1) 1      31) a) They have three body parts.
- 2) 2      b) Animal B has wings but Animal A does not have wings.
- 3) 2      c) The spider is not classified in the same group of animals as Animals A and B because it has eight legs but Animal A and B have six legs.
- 4) 2
- 5) 2      32) i) D      ii) C      iii) B      iv) A
- 6) 4      33)                      touch  
   hearing
- 7) 4      Nose
- 8) 4      Tongue
- 9) 2      34) a) Jack is right      b) A seed can grow, needs air, food and water to survive.
- 10) 1      35) Elephant              frog              chicken  
        Caterpillar
- 11) 1      36) a) Grasshopper A and Grasshopper C will die first.
- 12) 3      b) i) This experiment shows that grasshoppers are plant eaters.
- 13) 4      ii) Living things need air to stay alive.
- 14) 4
- 15) 3      37) 
- 16) 1
- 17) 4      
- 18) 1      38) i) A : cap      B : stalk      C : gills
- 19) 4      ii) The group is fungi.
- 20) 1      39) A plant must have flowers in order to bear fruits.
- 21) 2      40) Eraser              Toilet roll      Knife
- 22) 3                      Newspaper              Iron nail
- 23) 2    Drink can
- 24) 3      b) i) The object is the knife  
        ii) The materials are plastic and metal.
- 25) 1      c) The cupboard can be made of two materials.
- 26) 4      41) a) Material Y is a glass.      see above
- 27) 2      28) 2      29) 3      30) 2