

**CHIJ ST. NICHOLAS GIRLS' SCHOOL  
SEMESTRAL ASSESSMENT 1 – 2004**

**PRIMARY 3 SCIENCE**

Name : \_\_\_\_\_ ( )

Class : Primary 3 ( )

Date : 12 May 2004





Duration : 1 h 45 min

**Section A : (30 x 2 marks)**

**In each question, there is one correct answer. Choose the correct answer and shade the oval bearing the correct number in the Optical Answer Sheet (OAS) provided.**

1. Which of the following is a non-living thing?
  - (1) Squid
  - (2) Snake
  - (3) Starfish
  - (4) Sawdust

2. Observe the 2 groups of things shown below.

Group 1	Group 2
 Dried leaf	 Drinking Glass
 Twig	 Toy Duck

Which one of the following pairs of headings for Group 1 and Group 2 is correct?

	Group 1	Group 2
(1)	Plants	Animals
(2)	Living Things	Non-living Things
(3)	Things that were once alive	Things that were never alive
(4)	Things that are made from plant parts	Things that are made from animals

3. All living things will die without \_\_\_\_\_.

A: air  
C: water

B: food  
D: sunlight

- (1) A only
- (2) A and D
- (3) B and C
- (4) A, B and C

4. Look at the 3 different birds shown below carefully. Which birds cannot fly?



- (1) Ostrich and owl only.
- (2) Owl and penguin only.
- (3) Ostrich and penguin only
- (4) Ostrich, owl and penguin

5. Study the table below and answer the following question.

A	B
Periwinkle	Seaweed
Rose	Moss
X	Y

What plants can X and Y be?

	X	Y
1)	Pine tree	Dumbcane
2)	Allamanda	Water lily
3)	Hibiscus	Morning Glory
4)	Eggplant	Tree Fern

6. All of the following animals except \_\_\_\_\_ breathe through their lungs.

- (1) Dog
- (2) Camel
- (3) Dolphin
- (4) Goldfish

7. Which of the following statements are correct about fungi?

- A: They are tiny
- B: They make their own food
- C: They are fixed in a position
- D: They respond slowly to changes

- (1) A only
- (2) B and C only
- (3) C and D only
- (4) B, C and D

8. Which one of the following plants does not bear any flowers?

- (1) Fern
- (2) Coconut
- (3) Angsana
- (4) String Bean

9. Which one of the following statements does not correctly describe an eagle?

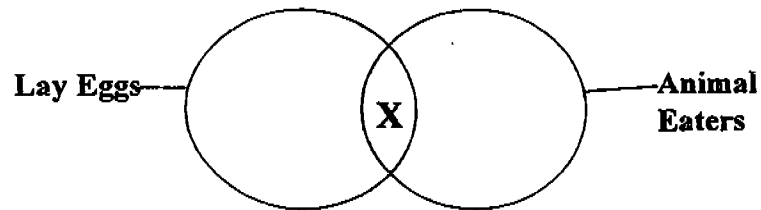
- (1) It has teeth
- (2) It lays eggs
- (3) It has a beak
- (4) It has a pair of legs

10. Which animals below have been **incorrectly** classified?

Group	Animals
Fish	Kingfisher
Bird	Ladybird
Insect	Spider
Reptile	Lizard
Mammal	Bat

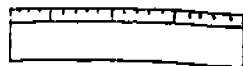
- (1) Spider and Bat only
- (2) Spider, Lizard and Bat only
- (3) Kingfisher and Ladybird only
- (4) Kingfisher, Ladybird and Spider only

11. Study the Venn diagram shown below. Which one of the following can X be?



- (1) Frog
  - (2) Bear
  - (3) Whale
  - (4) Caterpillar
12. Which one of the objects shown below is not made from things that were once alive?

(1)



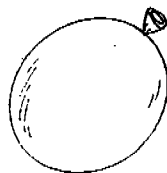
Wooden ruler

(2)



Coin

(3)



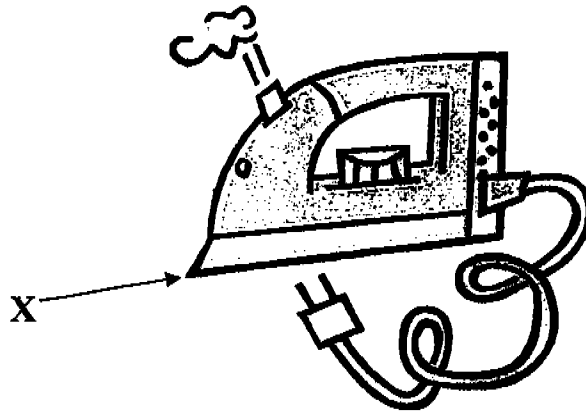
Balloon

(4)



Newspaper

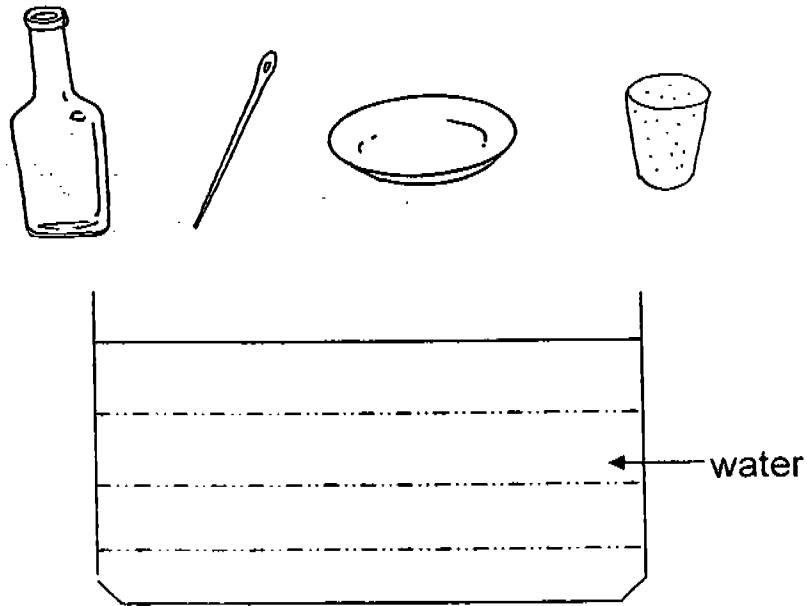
13. Look at the picture carefully. Which one of the materials below, is suitable to make part X ?



Electric iron

- (1) Metal
  - (2) Fabric
  - (3) Plastic
  - (4) Rubber
14. Bricks and stones are used to build houses and roads respectively, because these materials are \_\_\_\_\_.
- (1) heavy and hard
  - (2) hard and strong
  - (3) heavy and soft
  - (4) light and tough

15. Four objects of different materials are dropped into a container of water. Which of the objects will float?



- A: Cork
- B: Bottle
- C: Needle
- D: Paper plate

- (1) A only
- (2) B only
- (3) A and D only
- (4) C and D only



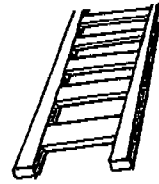
16. Which one of the following objects is made of rubber?

(1)



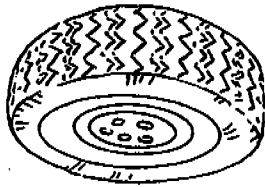
Mirror

(2)



Ladder

(3)



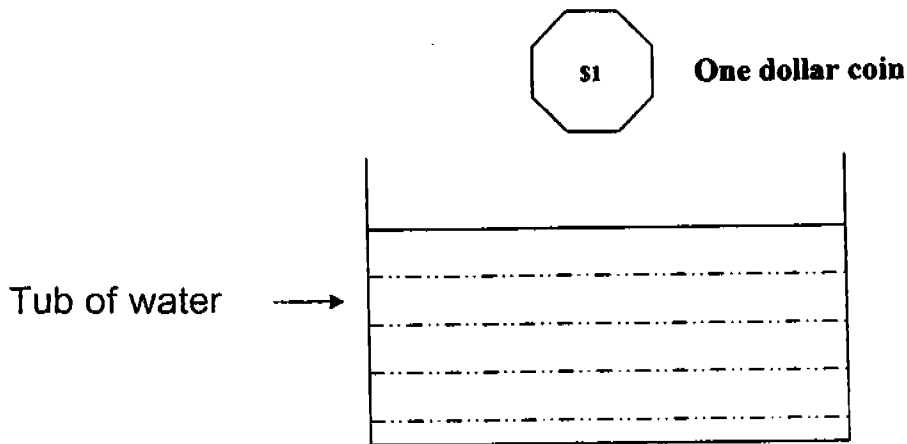
Tyre

(4)



Pencil

17. What will happen to the one dollar coin when it is dropped into a tub of water?



- (1) It will bounce off the water surface
- (2) It will float and then sink into the water
- (3) It will sink and lay at the bottom of the water
- (4) It will sink and then rise to the water surface

18. The properties of a material are given below.

- It is elastic
- It is durable
- It is waterproof

The material is likely to be \_\_\_\_\_.

- (1) Wood
- (2) Metal
- (3) Plastic
- (4) Rubber

19. Which one of the following statements is true?

- (1) The pupa of a butterfly eats a lot.
- (2) The mosquito has a 3-stage life cycle.
- (3) The caterpillar stage is also known as a pupa.
- (4) The mealworm beetle has a 4-stage life cycle.

20. The young of a cockroach is called a \_\_\_\_\_.

- (1) pupa
- (2) larva
- (3) nymph
- (4) chrysalis

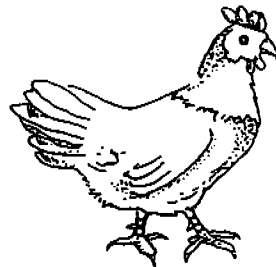
21. Look at pictures showing the different stages in the life cycle of a chicken. Which one of the following is the correct order of its development?



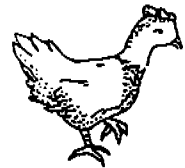
A



B



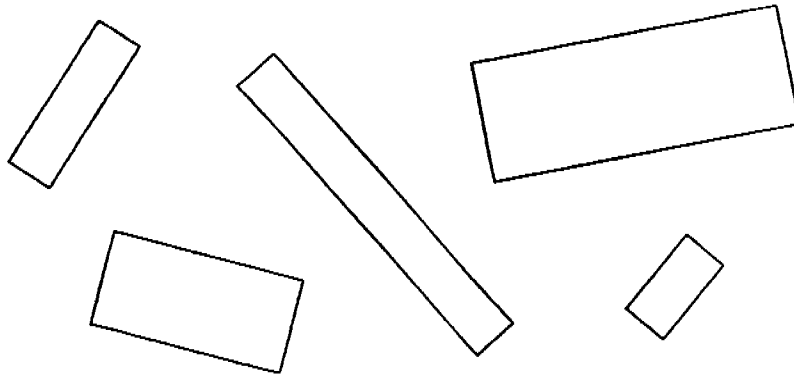
C



D

- (1) A, C, B, D
- (2) A, B, C, D
- (3) B, A, D, C
- (4) B, D, A, C

22. What is a property that all rectangles have?



- (1) All rectangles are black or white
- (2) All rectangles have four corners
- (3) All rectangles are of the same size
- (4) All rectangles have sides of equal length

23. When dogs swim in water, they keep their heads above the water because they \_\_\_\_\_.

- (1) need sunlight
- (2) need to take in air
- (3) do not want to get their heads wet
- (4) do not want to alert their predators

24. Which one of the animals is **NOT** a mammal?

- (1) Shark
- (2) Whale
- (3) Spiny Anteater
- (4) Duck-billed platypus

25. Which one of the statements is incorrect about the larva stage of the butterfly?

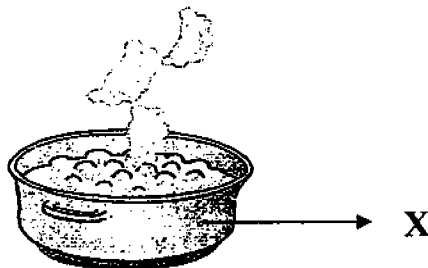
- (1) It grows very fast
- (2) It moults several times
- (3) It stops moving and eating
- (4) It moves around and eats a lot

26. Which of the following animals lay eggs?

- A: Seal
- B: Guppy
- C: Spiny anteater

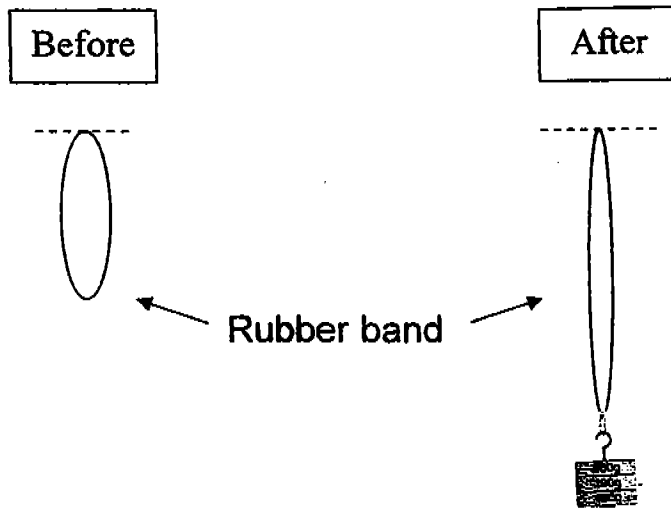
- (1) A only
- (2) C only
- (3) B and C
- (4) A and C

27. Metal is used for the part marked 'X' of the cooking pot because it \_\_\_\_\_.



- (1) breaks easily
- (2) catches fire easily
- (3) conducts heat easily
- (4) gets scratched easily

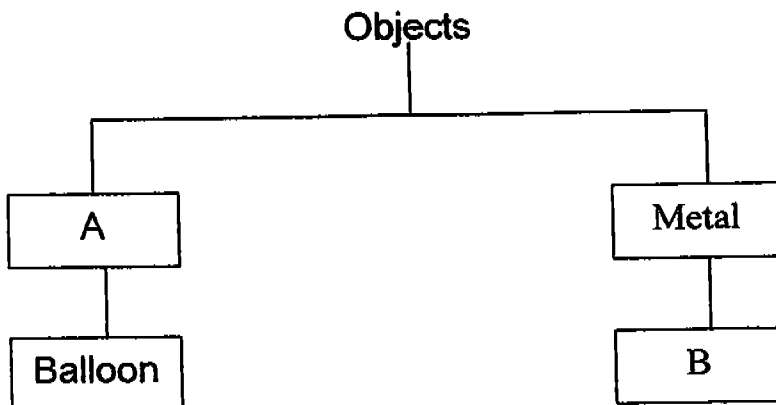
28. Study the pictures below carefully.



What property of a rubber band is illustrated above?

- (1) It is long
- (2) It is hard
- (3) It is elastic
- (4) It is durable

29. Materials can be classified into groups. Study the table and decide what A and B can be respectively.



	A	B
(1)	Wood	Pillow
(2)	Eraser	Rubber
(3)	Rubber	Staples
(4)	Telephone	Ceramic

30. Which one of the animals does not belong to the same group as the others?



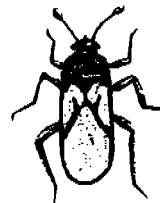
(1) Ant



(2) Butterfly



(3) Scorpion



(4) Cockroach

NAME : \_\_\_\_\_

DATE : \_\_\_\_\_

CLASS : \_\_\_\_\_

WRITE		SHADE OVALS									
INDEX NUMBER	0	1	2	3	4	5	6	7	8	9	
	0	1	2	3	4	5	6	7	8	9	
	0	1	2	3	4	5	6	7	8	9	
	0	1	2	3	4	5	6	7	8	9	
	0	1	2	3	4	5	6	7	8	9	
	A	B	C	D	E	F	G	H	I	J	Z

SUBJECT: \_\_\_\_\_

EXAMPLE: IF YOU THINK THE 2ND OPTION IS THE CORRECT ANSWER SHADE THE OVAL 2 LIKE THIS:



- |    |                 |    |                 |    |                 |
|----|-----------------|----|-----------------|----|-----------------|
| 1  | ○ 1 ○ 2 ○ 3 ● 4 | 21 | ○ 1 ○ 2 ● 3 ○ 4 | 41 | ○ 1 ○ 2 ○ 3 ○ 4 |
| 2  | ○ 1 ○ 2 ● 3 ○ 4 | 22 | ○ 1 ● 2 ○ 3 ○ 4 | 42 | ○ 1 ○ 2 ○ 3 ○ 4 |
| 3  | ○ 1 ○ 2 ○ 3 ● 4 | 23 | ○ 1 ○ 2 ● 3 ○ 4 | 43 | ○ 1 ○ 2 ○ 3 ○ 4 |
| 4  | ○ 1 ○ 2 ● 3 ○ 4 | 24 | ● 1 ○ 2 ○ 3 ○ 4 | 44 | ○ 1 ○ 2 ○ 3 ○ 4 |
| 5  | ○ 1 ○ 2 ○ 3 ● 4 | 25 | ○ 1 ○ 2 ● 3 ○ 4 | 45 | ○ 1 ○ 2 ○ 3 ○ 4 |
| 6  | ○ 1 ○ 2 ○ 3 ● 4 | 26 | ○ 1 ● 2 ○ 3 ○ 4 | 46 | ○ 1 ○ 2 ○ 3 ○ 4 |
| 7  | ○ 1 ○ 2 ● 3 ○ 4 | 27 | ○ 1 ○ 2 ● 3 ○ 4 | 47 | ○ 1 ○ 2 ○ 3 ○ 4 |
| 8  | ● 1 ○ 2 ○ 3 ○ 4 | 28 | ○ 1 ○ 2 ● 3 ○ 4 | 48 | ○ 1 ○ 2 ○ 3 ○ 4 |
| 9  | ● 1 ○ 2 ○ 3 ○ 4 | 29 | ○ 1 ○ 2 ● 3 ○ 4 | 49 | ○ 1 ○ 2 ○ 3 ○ 4 |
| 10 | ○ 1 ○ 2 ○ 3 ● 4 | 30 | ○ 1 ○ 2 ● 3 ○ 4 | 50 | ○ 1 ○ 2 ○ 3 ○ 4 |
| 11 | ○ 1 ○ 2 ○ 3 ○ 4 |    |                 |    |                 |
| 12 | ○ 1 ● 2 ○ 3 ○ 4 |    |                 |    |                 |
| 13 | ○ 1 ○ 2 ○ 3 ○ 4 |    |                 |    |                 |
| 14 | ○ 1 ○ 2 ○ 3 ○ 4 |    |                 |    |                 |
| 15 | ○ 1 ○ 2 ● 3 ○ 4 |    |                 |    |                 |
| 16 | ○ 1 ○ 2 ○ 3 ○ 4 |    |                 |    |                 |
| 17 | ○ 1 ○ 2 ○ 3 ○ 4 |    |                 |    |                 |
| 18 | ○ 1 ○ 2 ○ 3 ○ 4 |    |                 |    |                 |

Individual Report -

Subject: Science  
Test: SA1

R/N:

01. 4	11. 1	21. 3
02. 3	12. 2	22. 2
03. 4	13. 1	23. 2
04. 3	14. 2	24. 1
05. 4	15. 3	25. 3
06. 4	16. 3	26. 2
07. 3	17. 3	27. 3
08. 1	18. 4	28. 3
09. 4	19. 1	29. 3
		30. 3



CHIJ ST. NICHOLAS GIRLS' SCHOOL  
SEMESTRAL ASSESSMENT 1 – 2004  
PRIMARY 3 SCIENCE

Name : \_\_\_\_\_ ( )

Class : Primary 3 ( )

Date : 12 May 2004

Duration : 1 h 45 min

**Section B : (40 marks)**

**Write your answers in the space provided.**



31a) Which group of animals does the above animal belongs to?

---

---

(1m)

b) Give two reasons for your answer above.

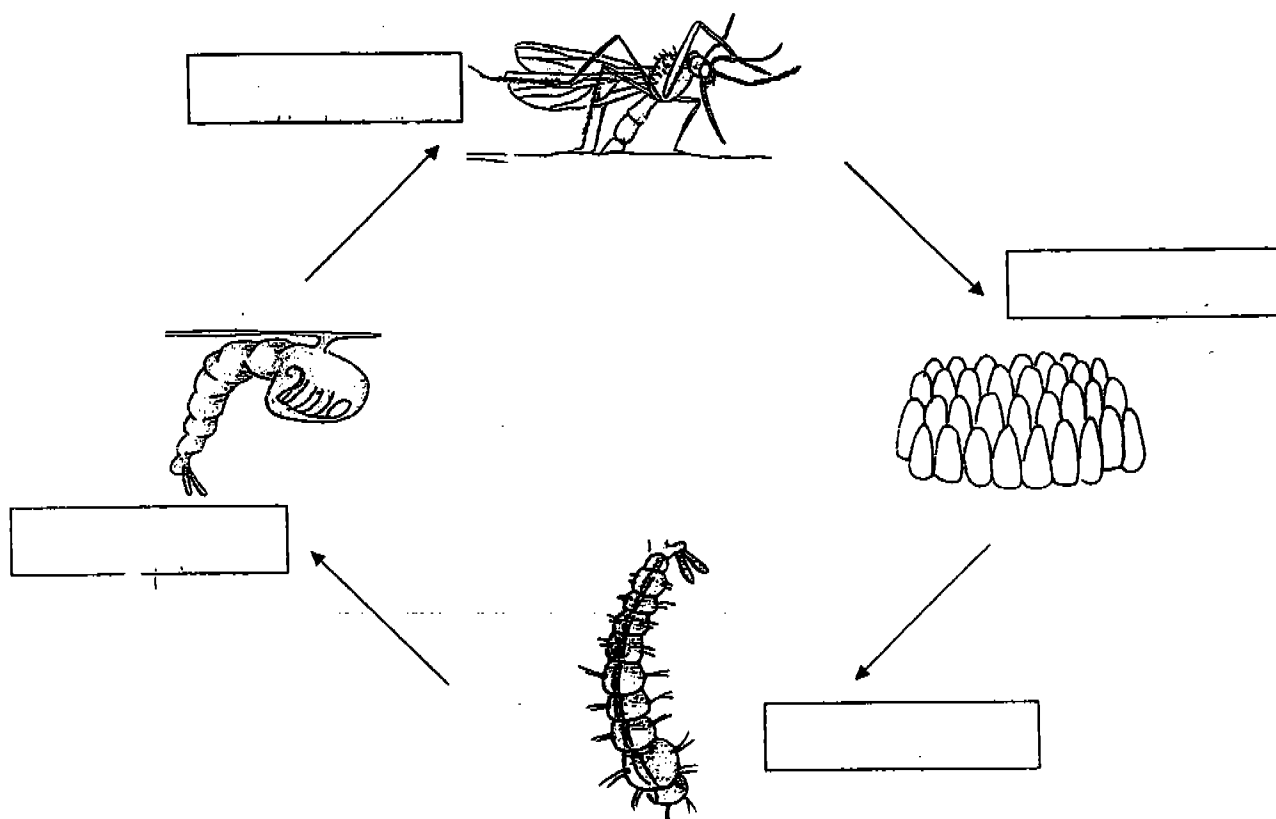
i) \_\_\_\_\_

ii) \_\_\_\_\_

(2 m)



32a) Fill in the four stages of the life cycle of a mosquito.



(2 m)

b) State two differences between the life cycle of a butterfly and a cockroach.

i) \_\_\_\_\_

\_\_\_\_\_

ii) \_\_\_\_\_

\_\_\_\_\_

(2 m)

33. The picture shows a magnifying glass.



a) Why is part 'A' normally made of glass?

---



---

(1 m)

b) What is part 'B' normally made of?

---



---

(1 m)

34. Study the diagram below and fill in the table given.

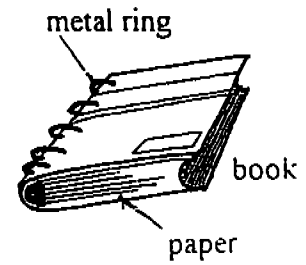
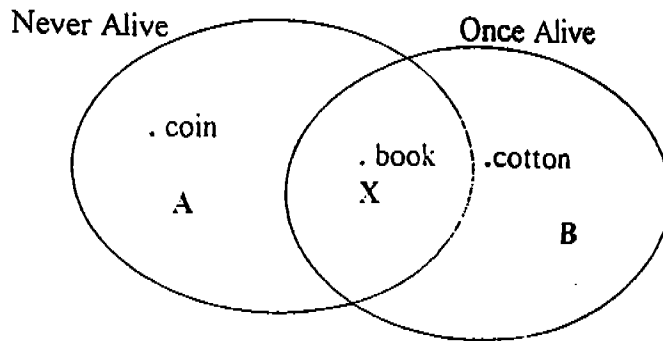


Put a tick (✓) in the correct column against each statement.

Statements	True	False
a) The animal had 2 legs.		
b) The animal had tail.		
c) The animal had a backbone.		
d) The animal was an insect eater.		

(2 m)

35. Study the materials used to make the book. Then look at the Venn diagram.



- a) Why is the book placed in X?

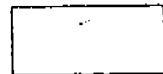
---

---

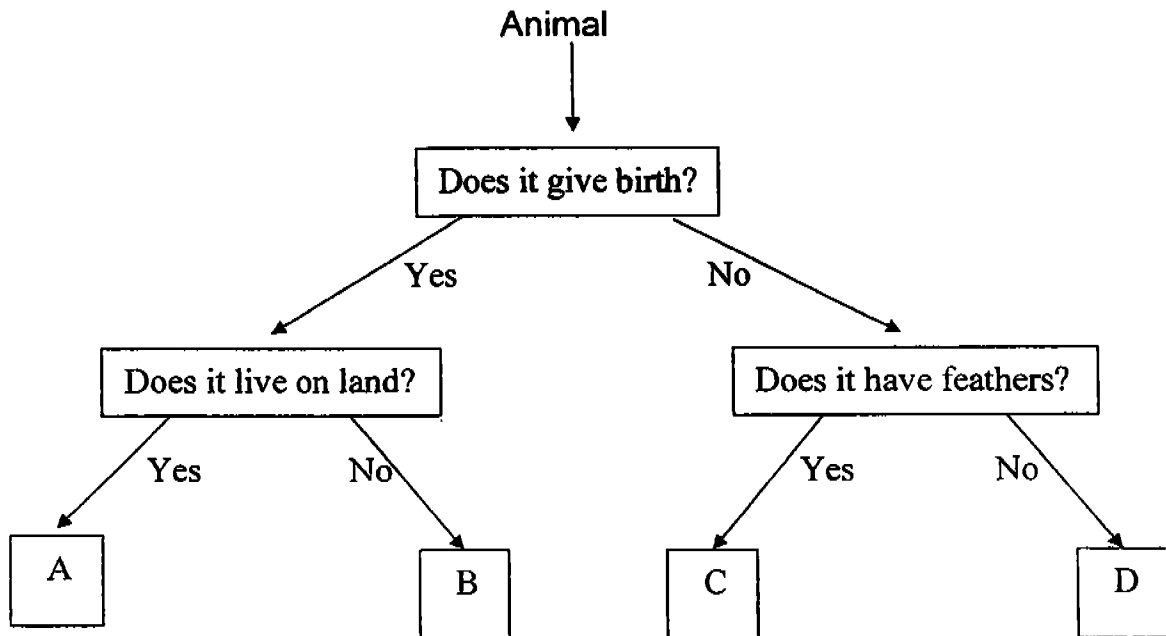
(2 m)

- b) Another object that can be placed in A is \_\_\_\_\_.

(1 m)



36. Look at the flow chart and answer the following questions.



a) Identify the alphabet (A, B, C or D) which best represents

i) whale : \_\_\_\_\_ ii) emu : \_\_\_\_\_

(2 m)

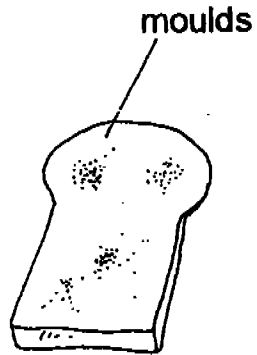
b) What is the difference between animal A and C?

---

---

(1 m)

37. The pictures below show bread that is mouldy and a mushroom.



mushroom

- a) Write one similarity between the moulds and the mushroom.

---

---

(1 m)

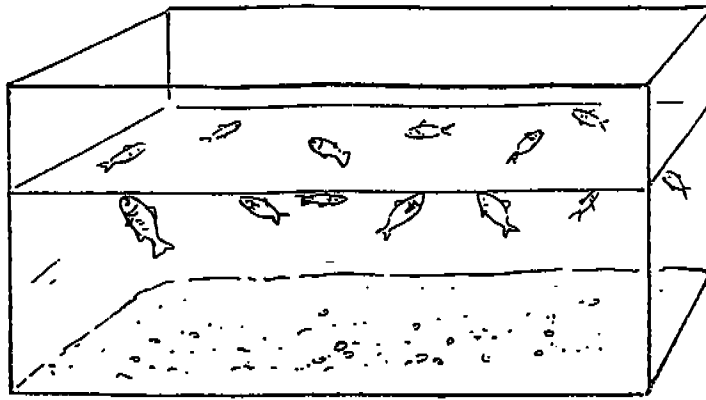
- b) Write one difference between the moulds and the mushroom.

---

---

(1 m)

38.



David bought fishes and placed them in a tank. He fed them with food. The next day, he found all the fishes swimming near the water surface.

a) Why were the fishes swimming near the water surface?

---

---

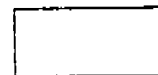
(2 m)

b) What could he have done to prevent that from happening?

---

---

(1m)



39. The following are the descriptions of three materials.

Material	Allows light to pass through	Waterproof	Weight	Can be stretched
X	Yes	Yes	Light	No
Y	No	Yes	Light	Yes
Z	A little	No	Heavy	No

a) Which material X, Y or Z can be used to make the objects below?

i) Contact lens : \_\_\_\_\_

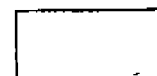
ii) Swimming costume : \_\_\_\_\_

(2 m)

b) From the table above, what is the most important property to consider while choosing the material for contact lens ?

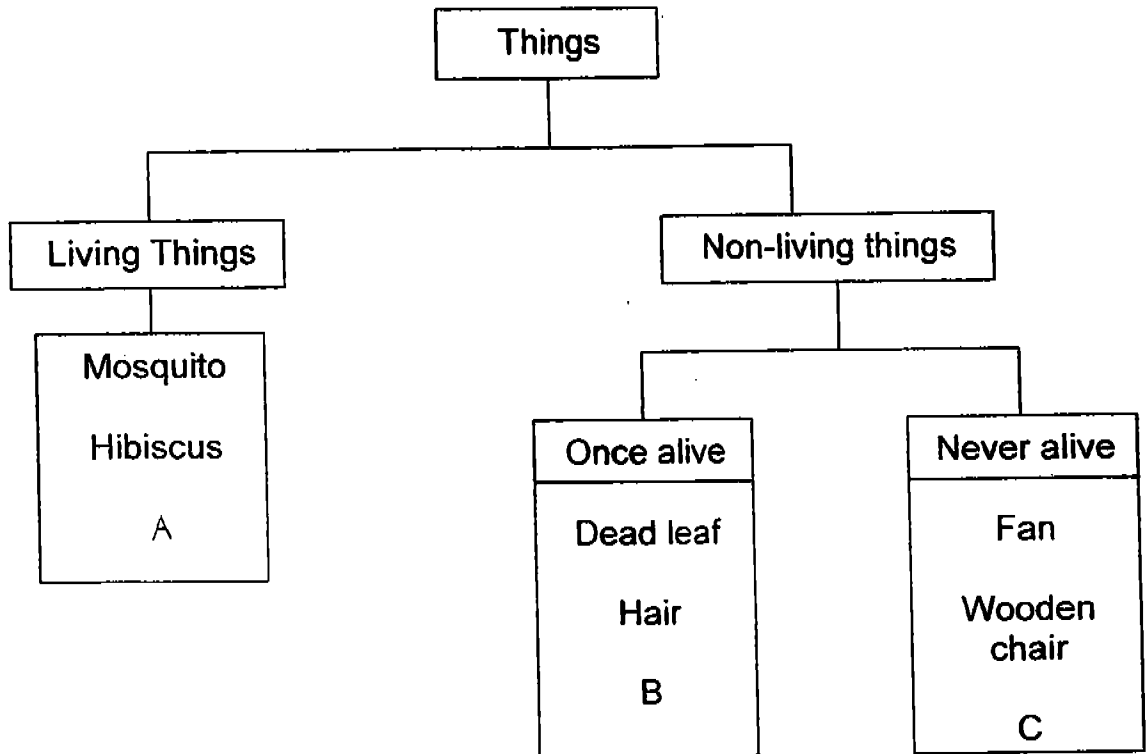
\_\_\_\_\_  
\_\_\_\_\_

(1 m)





40.



a) Which one of the following has been wrongly grouped?

---

---

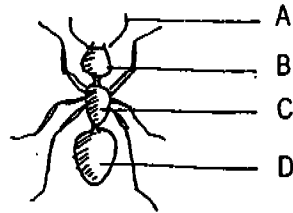
(1 m)

b) Where should the object mentioned in (a) be placed? A, B or C?

---

(1 m)

41. The picture below shows an ant?



Name the parts marked A, B, C and D.

A: \_\_\_\_\_

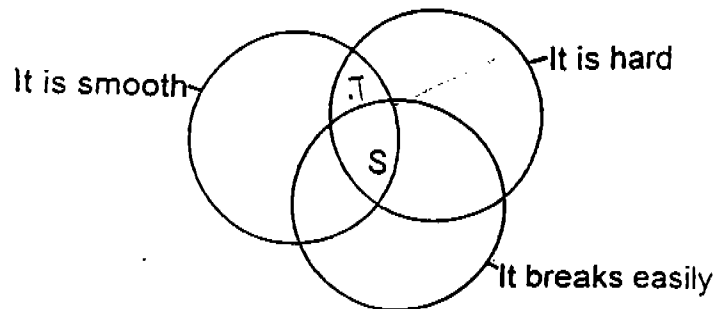
B: \_\_\_\_\_

C: \_\_\_\_\_

D: \_\_\_\_\_

(2 m)

42. Study the Venn diagram below.



a) Give an example of a material which has the properties of S.

\_\_\_\_\_

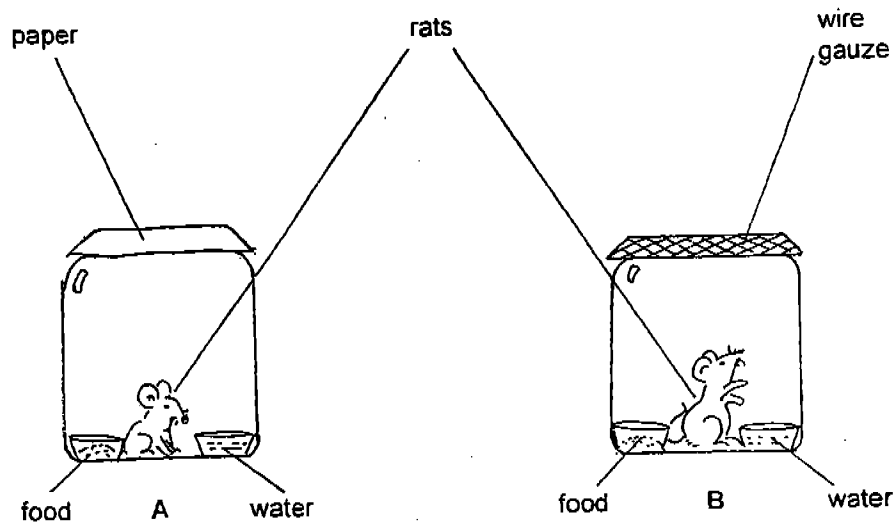
(1 m)

b) In the Venn diagram above, place a dot (•) and write 'T' to show where a marble should be placed.

(1 m)



43. Two jars, A and B, each contains a rat, a dish of water and a dish of food. A piece of paper is taped around the mouth of jar A and a piece of wire gauze is covered around the mouth of jar B.



- a) The rat in which one of the jars will die soon?

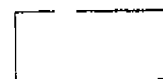
---

(1 m)

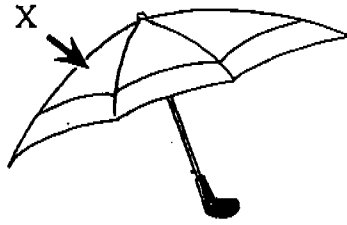
- b) What conclusion can be made from the above experiment?

---

(2 m)



44.



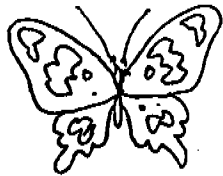
Give 2 properties of the material that are suitable for making part X.

a) \_\_\_\_\_

b) \_\_\_\_\_

(2 m)

45. Observe the animals below and state 1 similarity and 1 difference between them.



a) Similarity : \_\_\_\_\_

\_\_\_\_\_

b) Difference : \_\_\_\_\_

\_\_\_\_\_

(2 m)



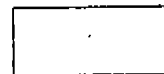
46. Give 2 functions of the outer-covering in animals.

a) \_\_\_\_\_

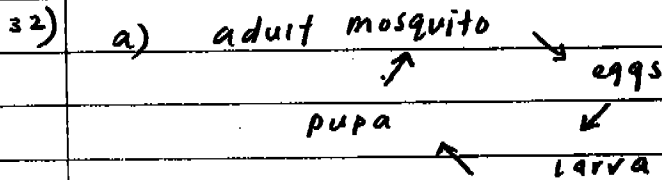
b) \_\_\_\_\_

(2 m)

-----End of paper-----



- 31) a) It belongs to the group of mammals.  
 b) i) It is warm-blooded  
 ii) It has hair on its body



- b)
- i) The life cycle of a butterfly has 4 stages while the life cycle of a cockroach has 3 stages.
- ii) The butterfly young does not look like its parent while the cockroach's young look like its parent.

- 33)
- a) It is normally made of glass because it is transparent
- b) It is normally made of plastic.

- 34)
- a) False  
 b) True  
 c) True  
 d) False

- 35)
- a) It is placed in X because paper was once alive and metal rings were never alive.
- b) a metal key.

- 36) a) i) B ii) C  
 b) Animals A gives birth to young while animal C lays eggs.

- 37) a) Both are fungi

- 38) a) They need to take in air.  
b) He could have put in an air pump.

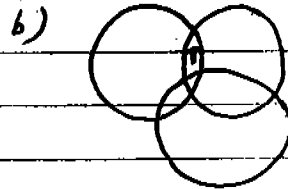
- 39) i) x  
a) ii) y

b) Allow light to pass through.

- 40) a) The wooden chair has been wrongly group.  
b) It should be placed in B.

- 41) a) feelers  
b) head  
c) thorax  
d) abdomen

42) a) It is glass



- 43) a) The rat in jar A will die first.  
b) Living things need air to live.

- 44) a) waterproof  
b) durable

45

- a) Both can fly  
b) The butterfly has 6 legs but the bird has 2 legs.

46

- a) It is to keep them warm.  
b) It is to protect them.