

Tao Nan School
Primary 3 Science End-Of-Year Examination 2007

Name : _____ ()

Date : 25 October 2007

Class : P3

Time : 1 h 15 min

Parent's Signature: _____

Marks : _____/100

Section A (30 X 2 marks)

For each question, choose the most suitable answer and shade its correct oval (1, 2, 3, or 4) on the Optical Answer Sheet (OAS).

1. Which one of the following is **not** a living thing?

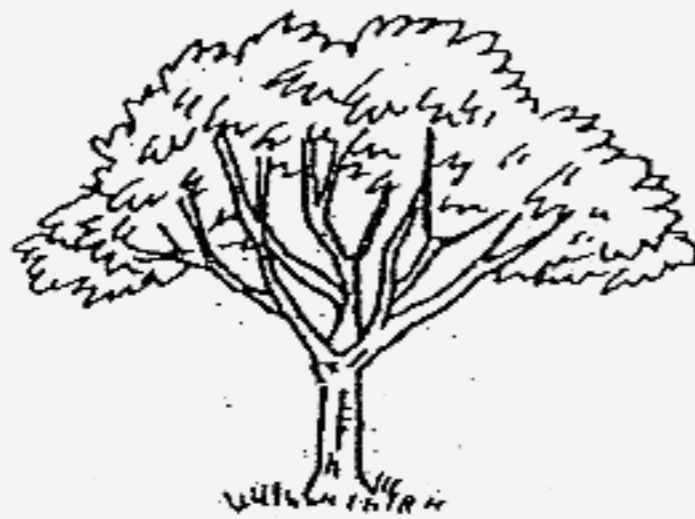
(1)



(2)



(3)



(4)



2. The following are pictures of three living organisms and their characteristics. Which of the following characteristics are **common** for all the three living organisms?



A	They grow on trees only.
B	They do not bear flowers.
C	They reproduce by spores.
D	They make their own food.

- (1) A and B only
- (2) A and D only
- (3) B and C only
- (4) C and D only

3.

penguin



cat



crocodile



Which one of the following is **correct**?

	Lay Eggs	Give Birth To Young Alive
(1)	Penguin	Cat, Crocodile
(2)	Crocodile	Penguin, Cat
(3)	Penguin, Crocodile	Cat
(4)	Cat, Crocodile	Penguin

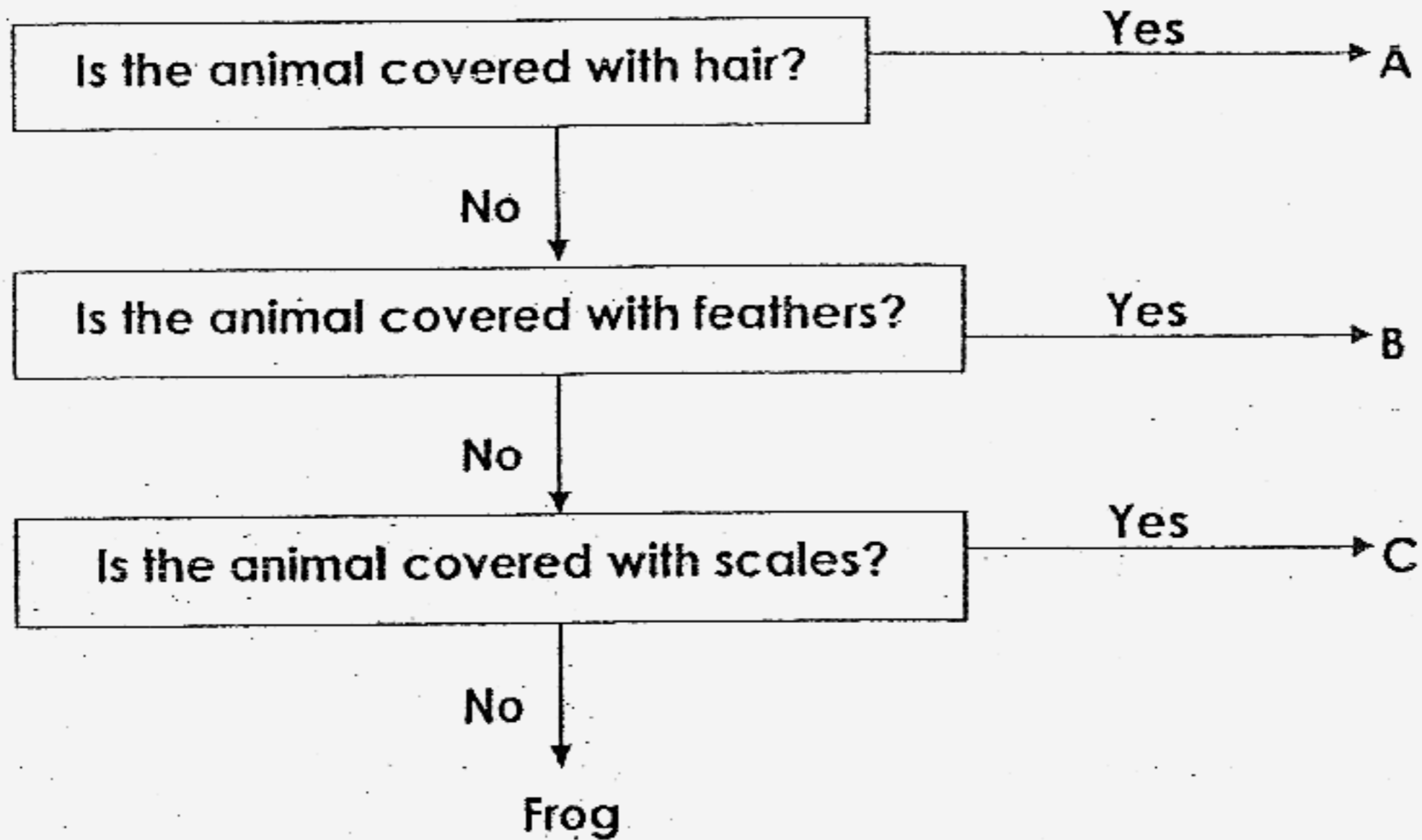
4. Study the two groups of fruits below.

Group A	Group B
chilli	lychee
lady's finger	longan
durian	rambutan

Which one of the following pairs of fruits can be placed in Group A and B?

	Group A	Group B
(1)	dragon fruit	grape
(2)	papaya	mango
(3)	cherry	orange
(4)	kiwi	pineapple

5. Study the flow chart below.



Which of the following animals can be represented by A, B and C?

	A	B	C
(1)	dog	owl	snail
(2)	monkey	eagle	whale
(3)	platypus	ostrich	goldfish
(4)	giraffe	spiny anteater	dolphin

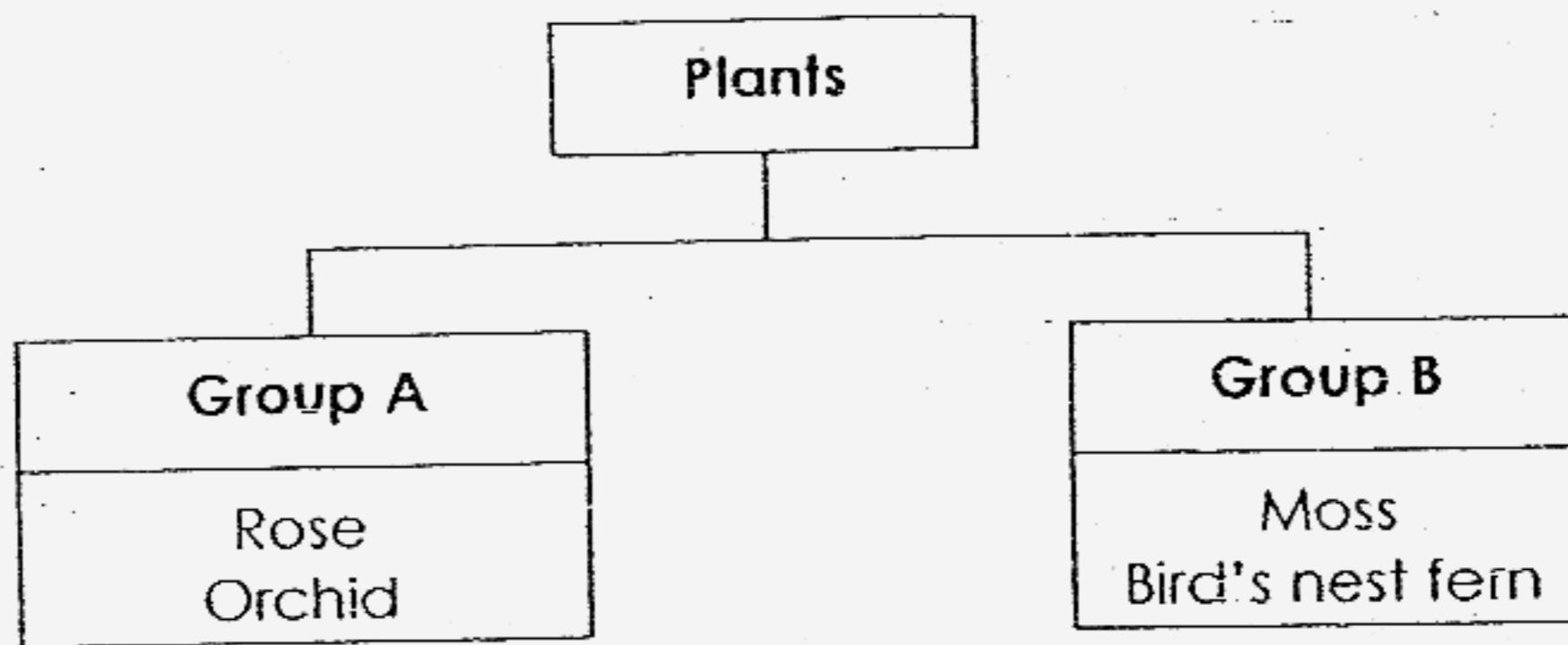
6. Study the description of the plant in the box below.

I grow on land.
I have a weak stem.
I bear flowers.

Which one of the following plants best fit the above description?

- (1) cattail
- (2) frangipani
- (3) duckweed
- (4) morning glory

7. Study the classification chart below.



What of the following plants can be represented by Group A and Group B?

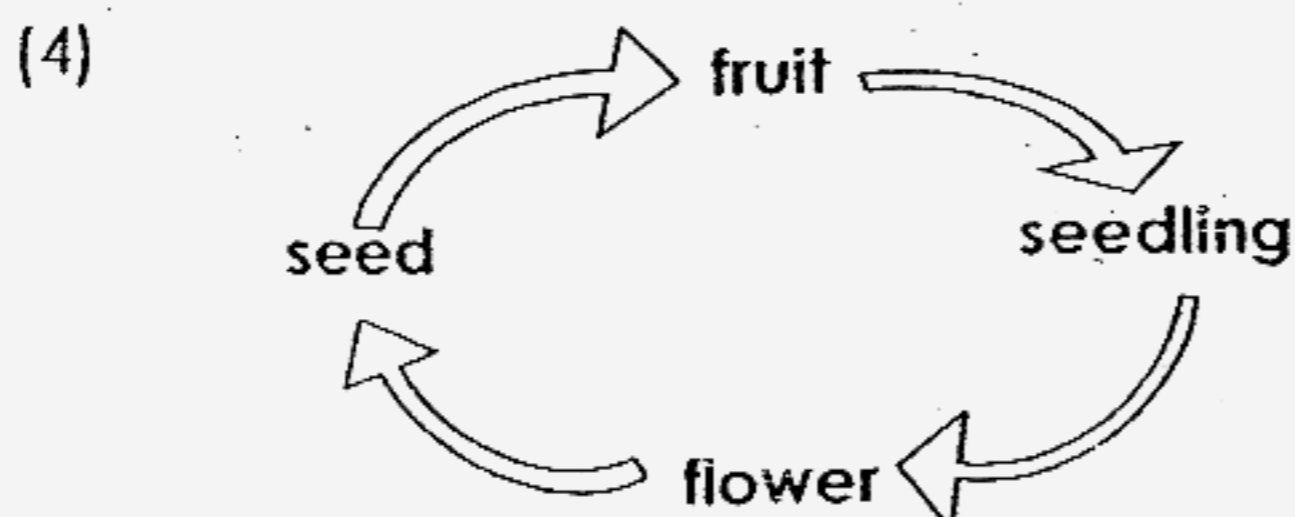
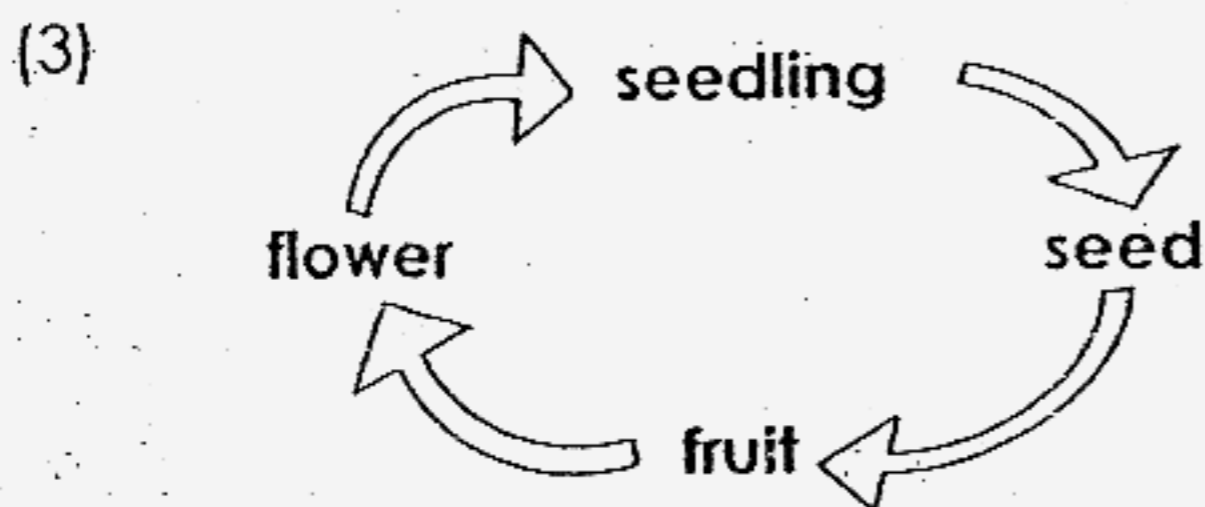
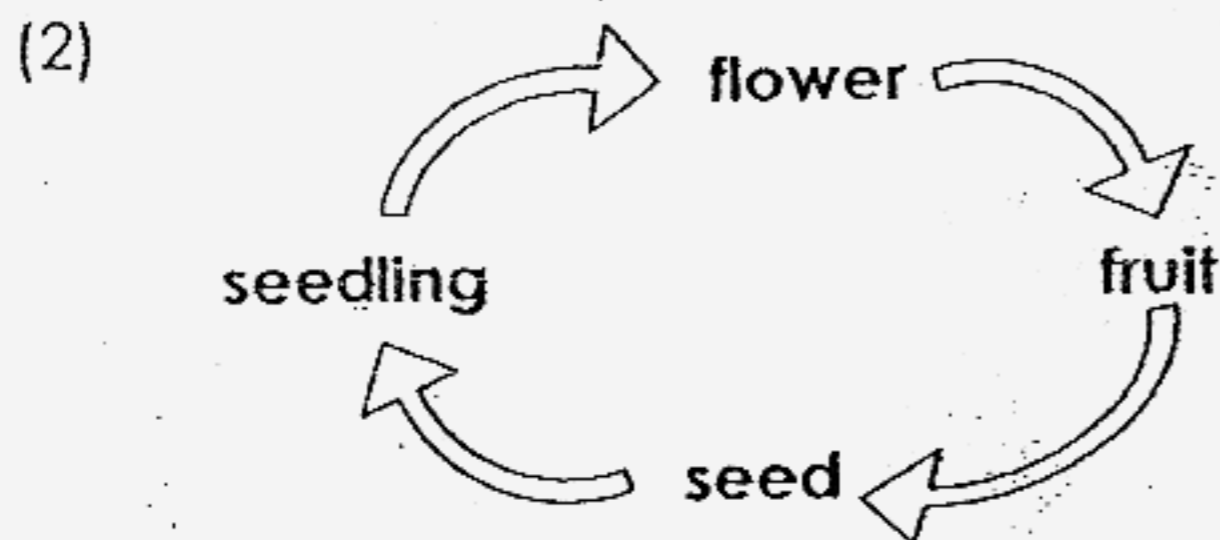
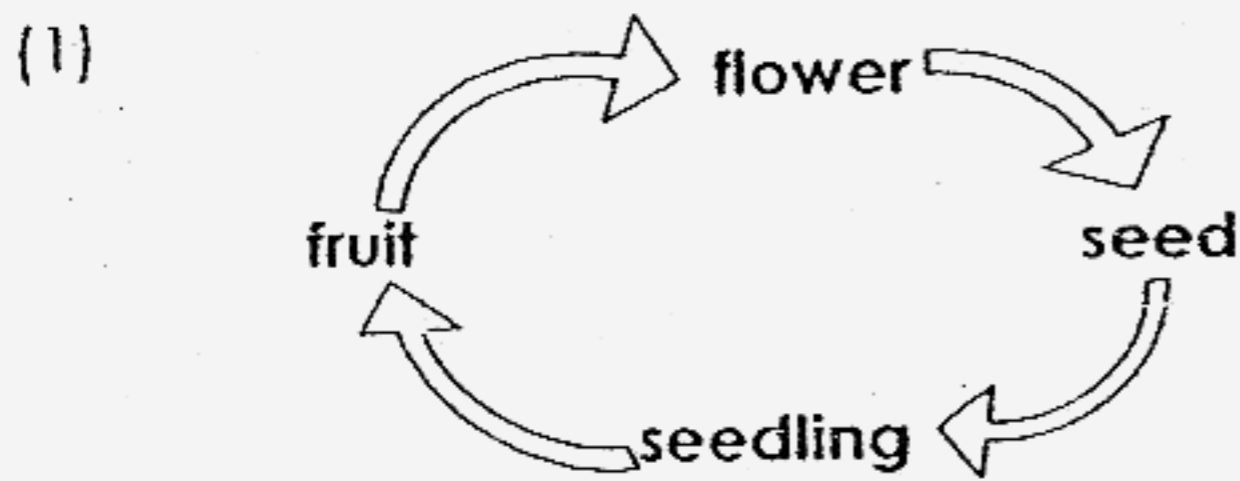
	Group A	Group B
(1)	Poisonous Plants	Non-Poisonous Plants
(2)	Flowering Plants	Non-Flowering Plants
(3)	Weak Stem Plants	Woody stem Plants
(4)	Water Plants	Land Plants

8. The process whereby a plant makes food is called _____.

- (1) photosynthesis
- (2) reproduction
- (3) germination
- (4) respiration

9. Tom accidentally toppled a pot of balsam plant and its stem broke. The plant will _____ after three days.
- (1) continue to grow
 - (2) grow more flowers
 - (3) develop new stem
 - (4) have drooping leaves
10. If a hen lays an egg and sits on it from 5 August, when will the egg hatch?
- (1) 12 August
 - (2) 19 August
 - (3) 26 August
 - (4) 31 August

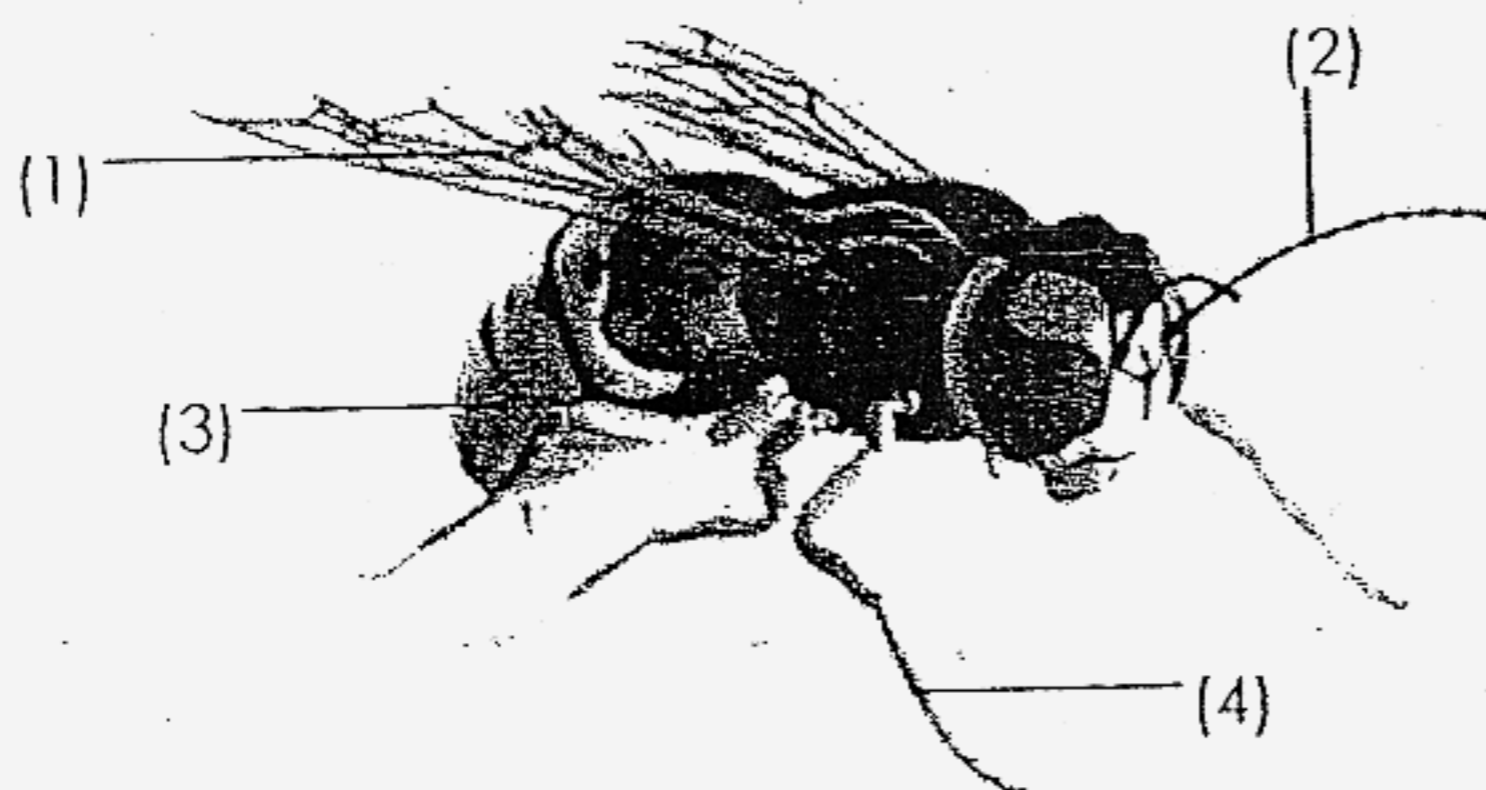
11. Which one of the following shows the life cycle of a flowering plant?



12. Our _____ protects our lungs and heart in our body.

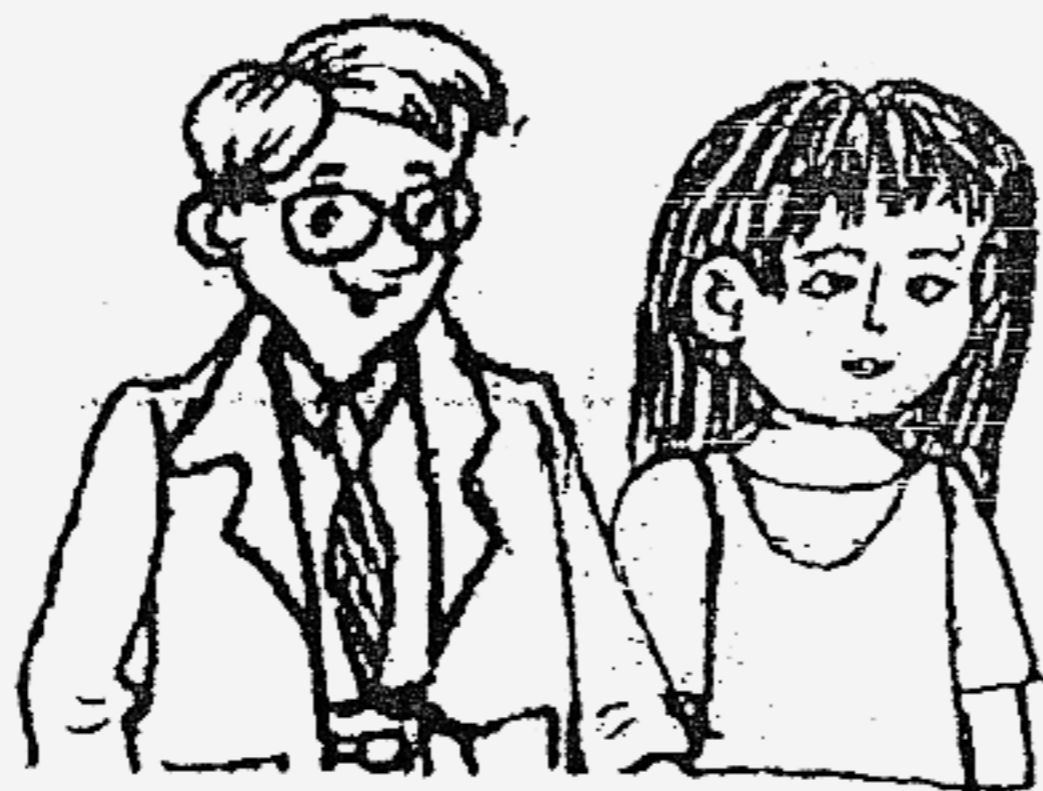
- (1) skull
- (2) spine
- (3) pelvis
- (4) ribcage

13. The diagram below shows a wasp.



Which part of the wasp is **not** found in all insects?

14. Study the picture of Jane and her parents below.



Jane's parents

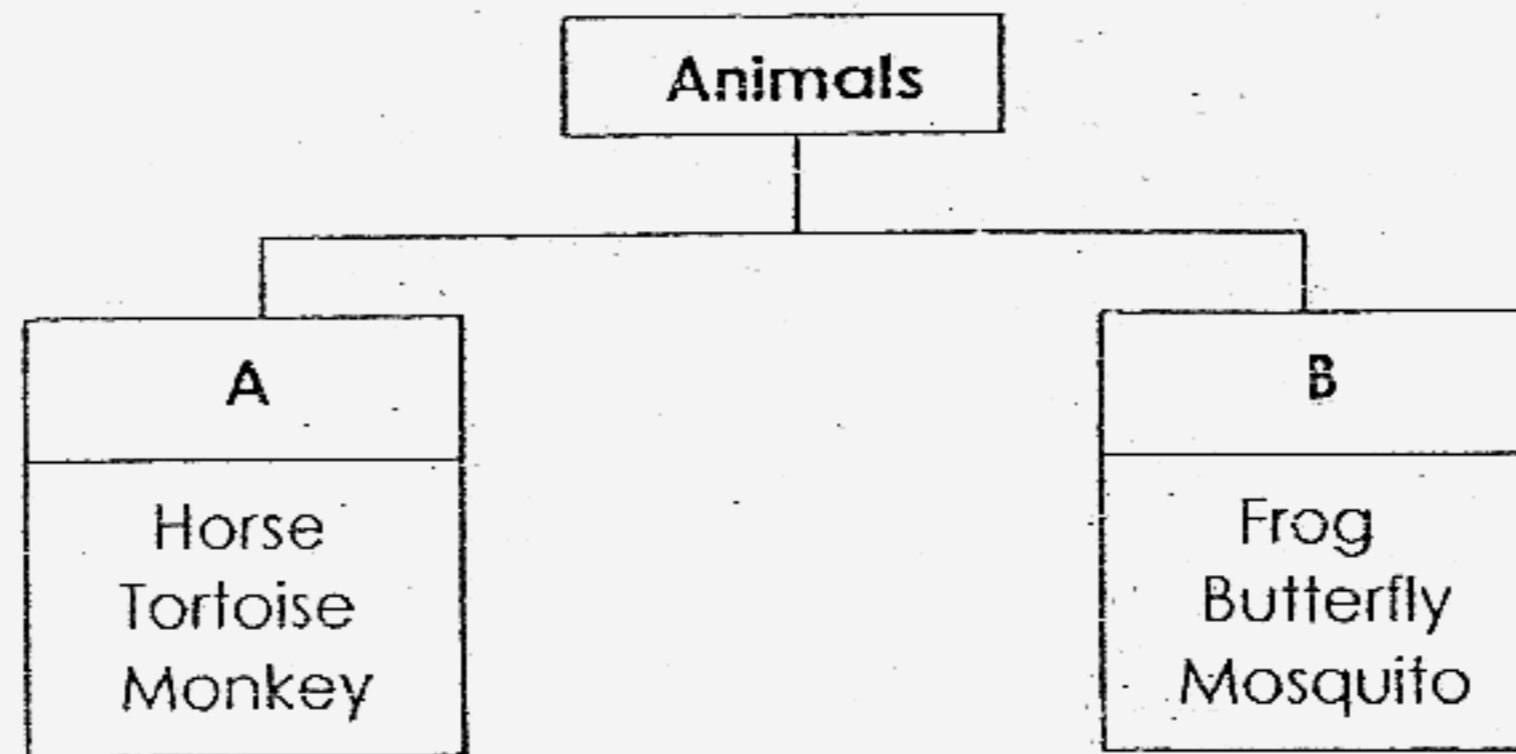


Jane

Jane inherited her _____

- (1) father's height
- (2) mother's hairstyle
- (3) mother's ear lobe
- (4) father's short-sightedness

15. Which one of the following headings are represented by A and B in the following classification?



	A	B
(1)	Cannot fly	Can fly
(2)	Have four legs	Have six legs
(3)	3-stage life cycle	4-stage life cycle
(4)	Look like its young	Do not look like its young

16. How are a caterpillar and a cockroach nymph similar?

- (1) Both can fly.
- (2) Both feed on leaves.
- (3) Both moult as they grow.
- (4) Both have two pairs of wings.

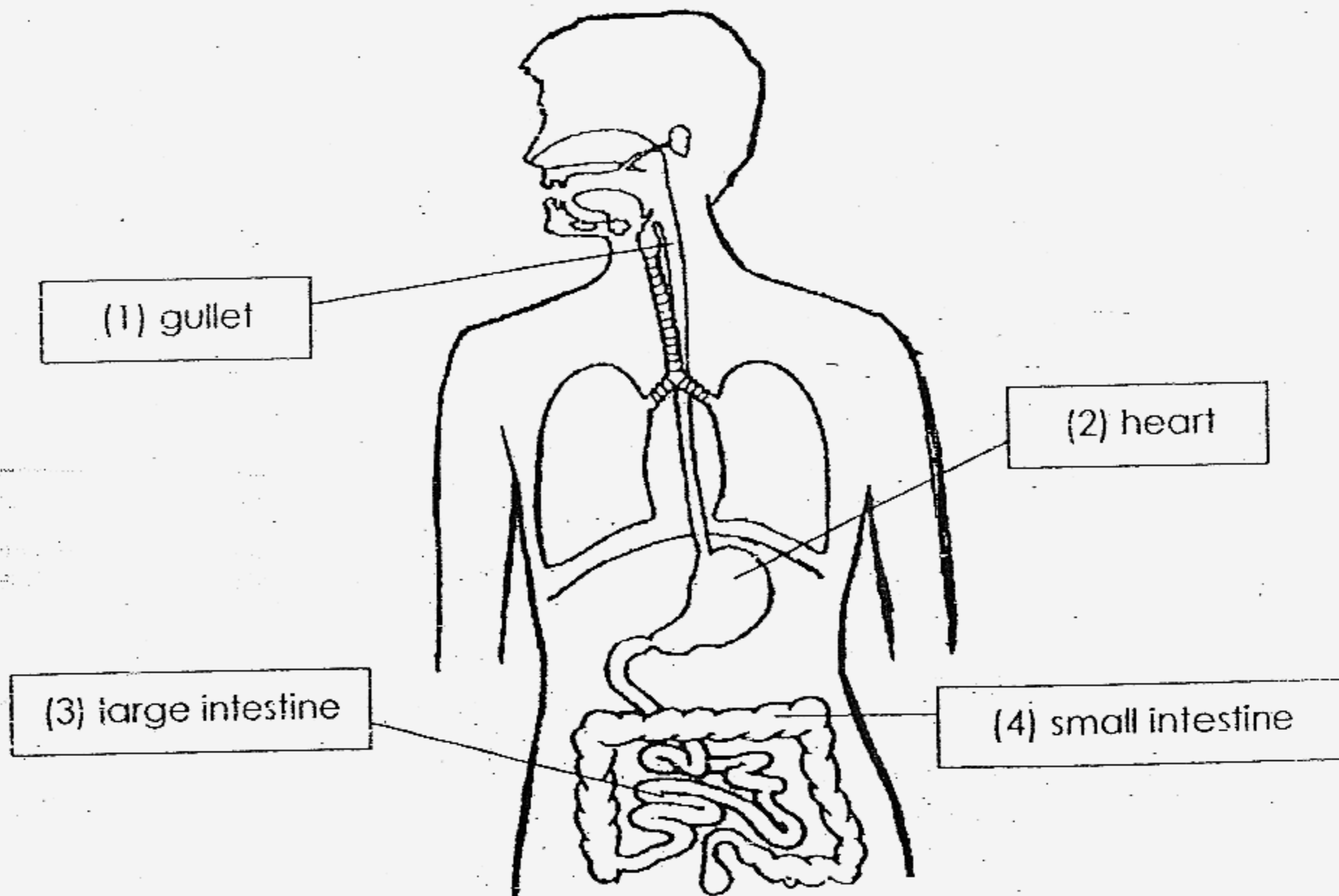
17. Below are four comments made by Ali, Bob, Chris and Devi while they were walking in a garden.

- Ali : Hmm.. what a sweet smell?
- Bob : Look at the beautiful lilies in the pond!
- Chris : Ouch! A red ant just bit me!
- Devi : Shh...What is that croaking sound?

Which of the children used **more than one** sense organ?

- (1) Ali
- (2) Bob
- (3) Chris
- (4) Devi

18. Look at the labelled organs below. Which one of the organs is labelled **correctly**?



19. Jane put some sugar into her coffee and picked up a teaspoon to stir it well. Which part/parts of her body helped her to do the work mentioned above?

A	Muscles
B	Bones
C	Joints
D	Nerves

- (1) A and B only
- (2) C and D only
- (3) A, B and C only
- (4) A, B, C and D

20. In our digestive system, the _____ in the mouth softens the food we eat so that it can be swallowed more easily.

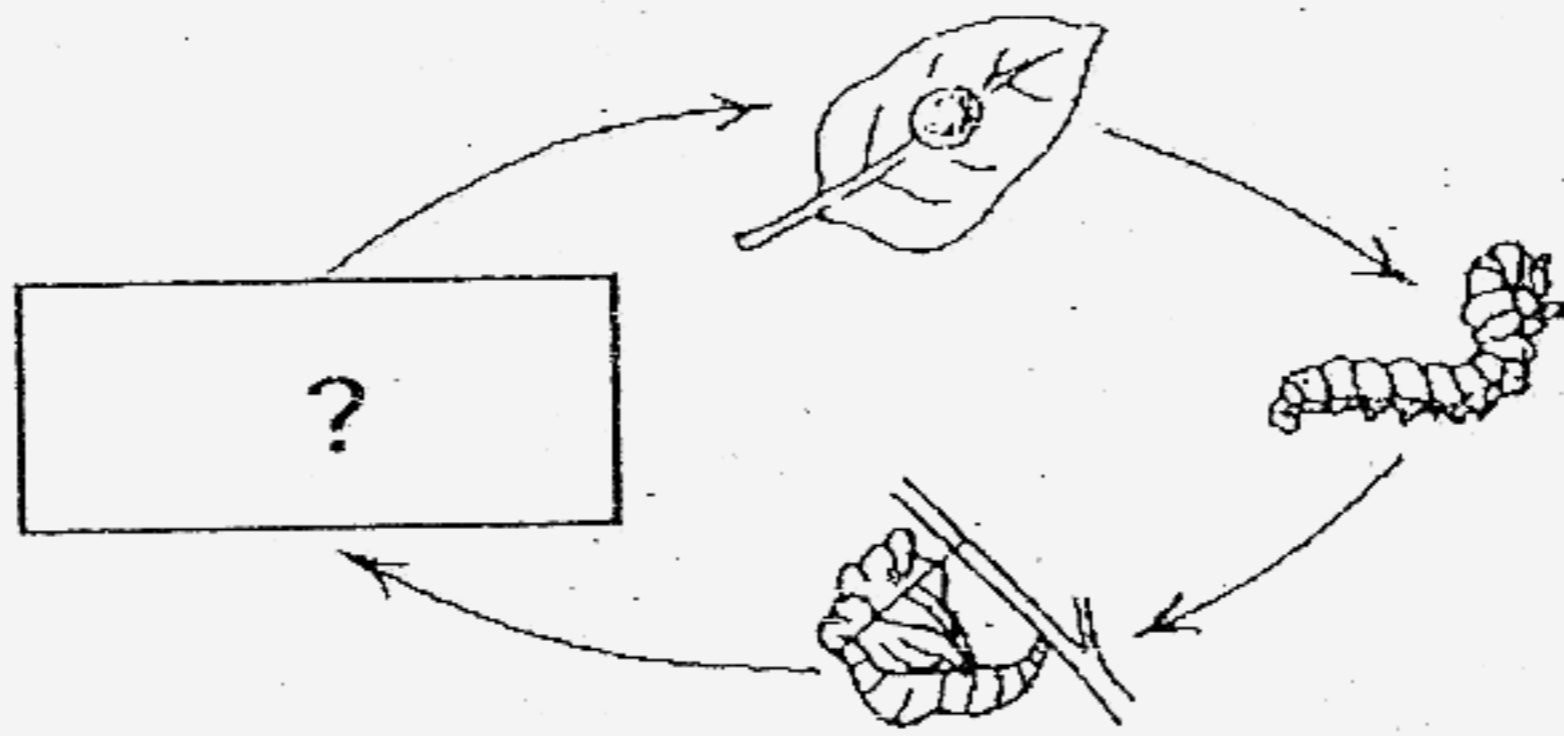
- (1) gum
- (2) saliva
- (3) teeth
- (4) tongue

21. Which of the following are **responses** made by living things?

A	A mother bird fed her nestlings with worms.
B	Lisa sneezed when she entered a dusty room.
C	Mary screamed loudly when she saw a snake.
D	The mimosa leaves closed when I touched them.

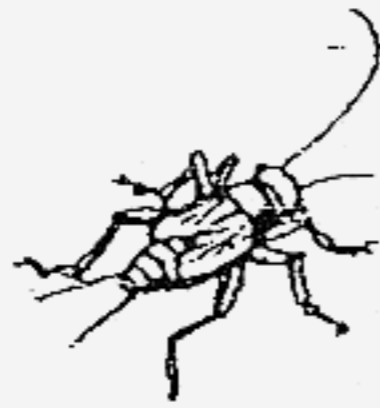
- (1) A and B only
- (2) C and D only
- (3) B, C and D only
- (4) A, B, C and D

22. The following is a life cycle of a certain organism.



Which one of the following organisms represents the missing stage in the life cycle above?

(1)



(2)



(3)



(4)



23. The table shows how fruits can be grouped.

	One seed	Many seeds
Edible	A	C
Non-edible	B	D

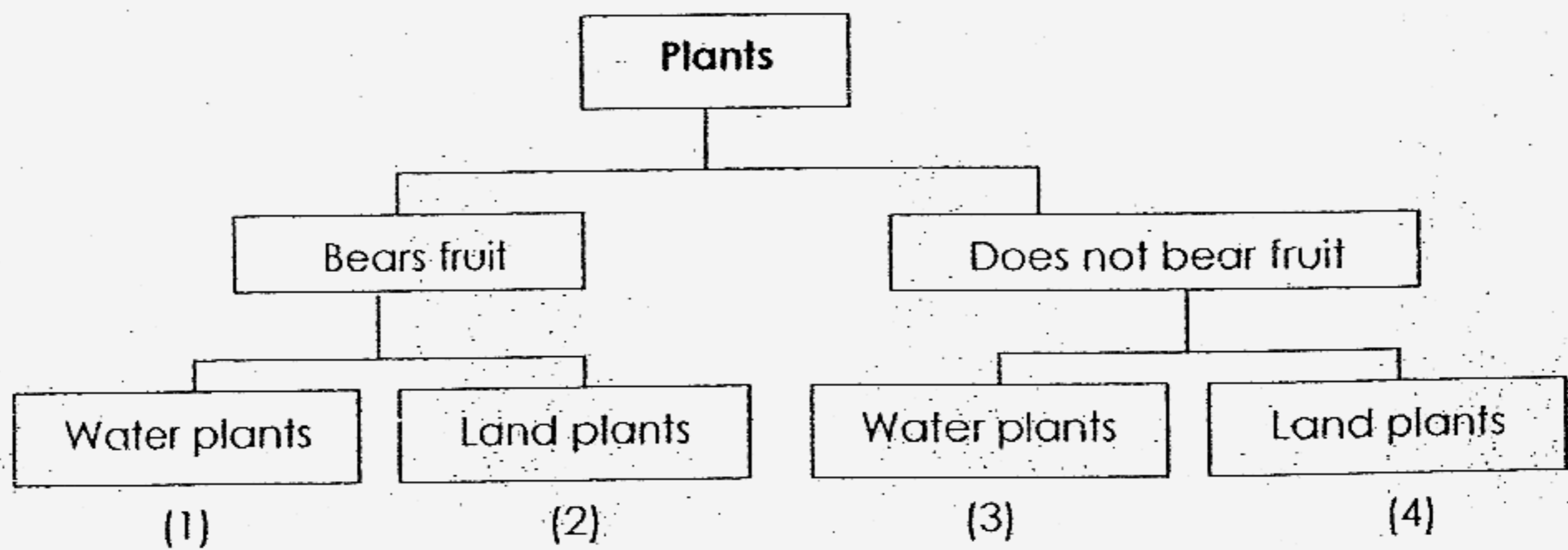
In which box, A, B, C or D, would you place watermelon?

- (1) A
- (2) B
- (3) C
- (4) D

24. Which one of the following materials and its properties are paired correctly?

	Materials	Properties
(1)	Rubber	Waterproof
(2)	Metal	Breaks easily
(3)	Wood	Transparent
(4)	Glass	Flexible

25. The following chart gives information on four plants.



From the information above, which plant bears fruit and grows on land?

26. Which of the following products are made from materials that are **once alive**?



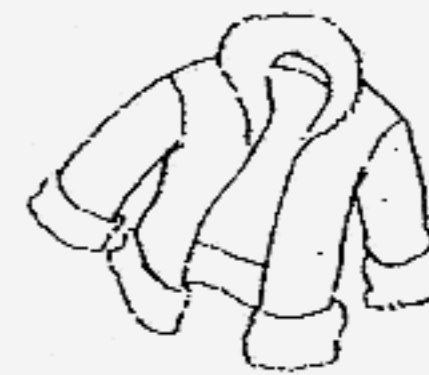
wine glass



nail cutter



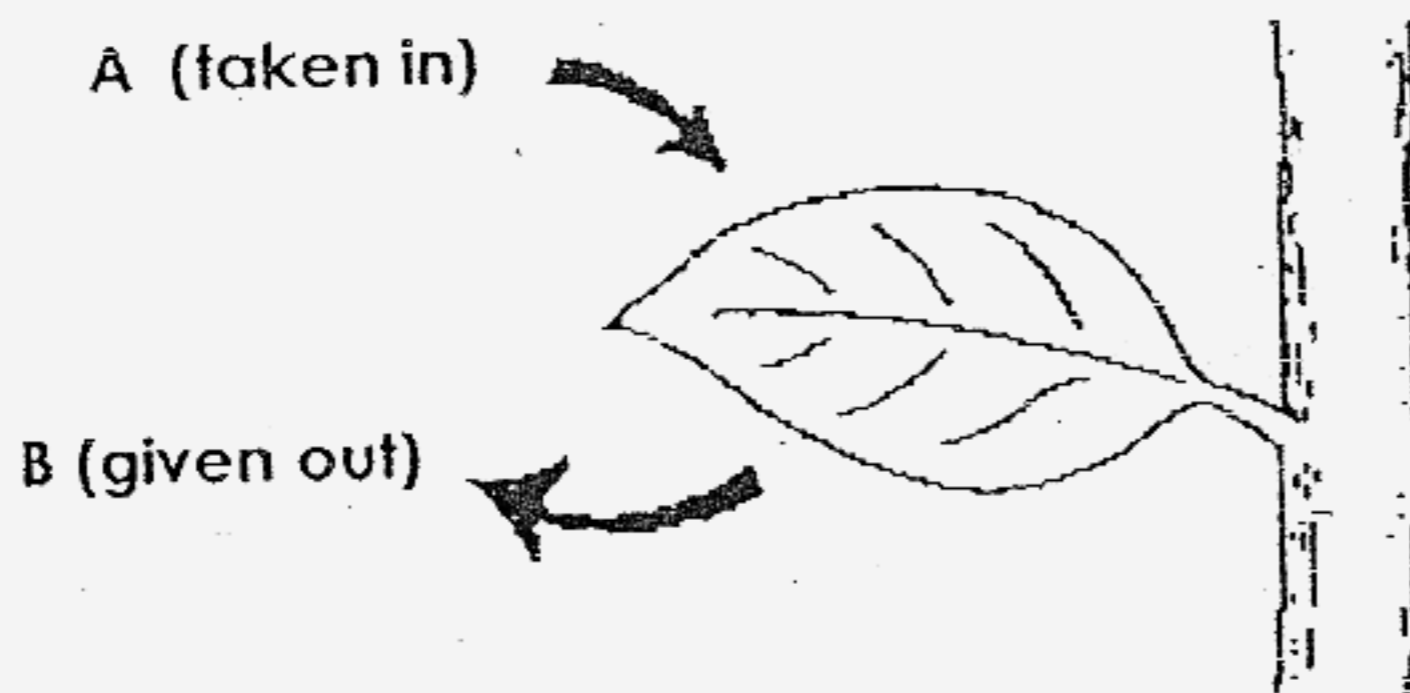
envelope



woollen jacket

- (1) woollen jacket only
- (2) wine glass and nail cutter only
- (3) envelope and woollen jacket only
- (4) wine glass, nail cutter and envelope only

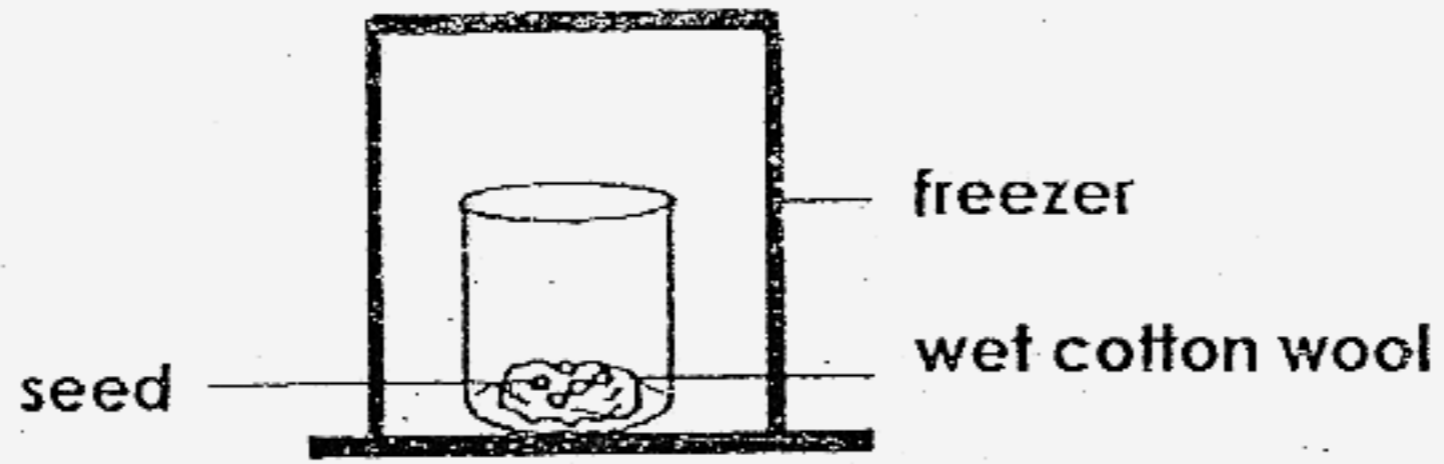
27. Study the diagram below. Which of the following is the gaseous exchange in the presence of light?



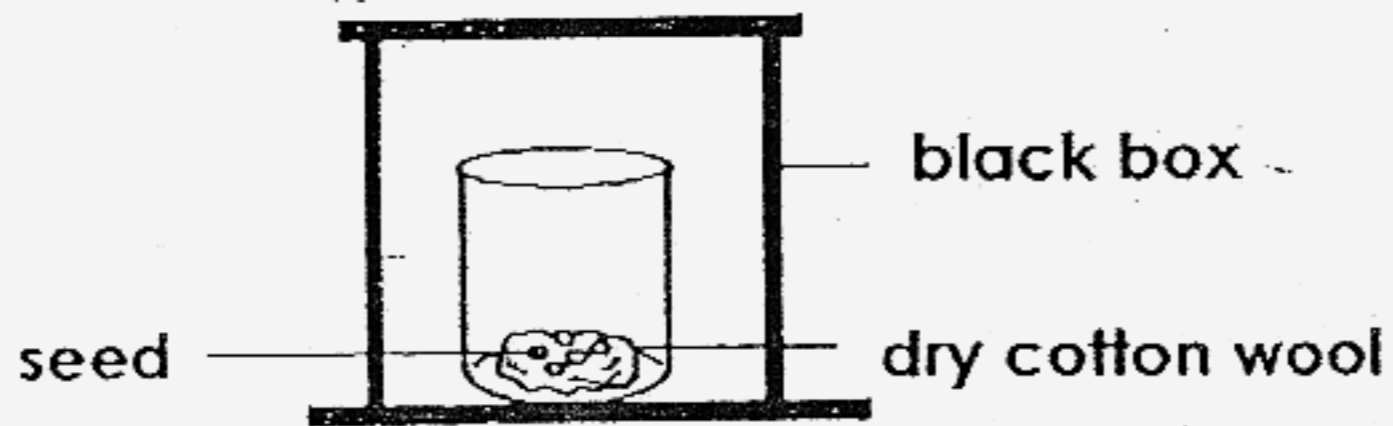
	A (taken in)	B (given out)
(1)	Oxygen	Water vapour
(2)	Carbon dioxide	Oxygen
(3)	Oxygen	Carbon dioxide
(4)	Water vapour	Carbon dioxide

28. In which one of the following set-ups, the seeds will germinate?

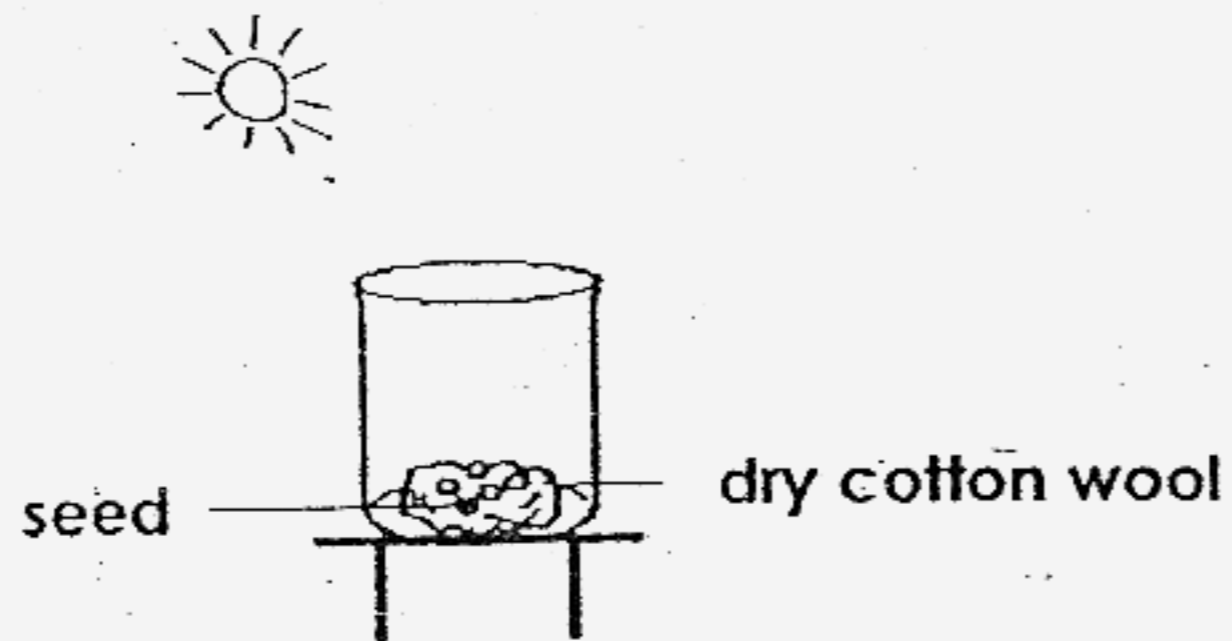
(1)



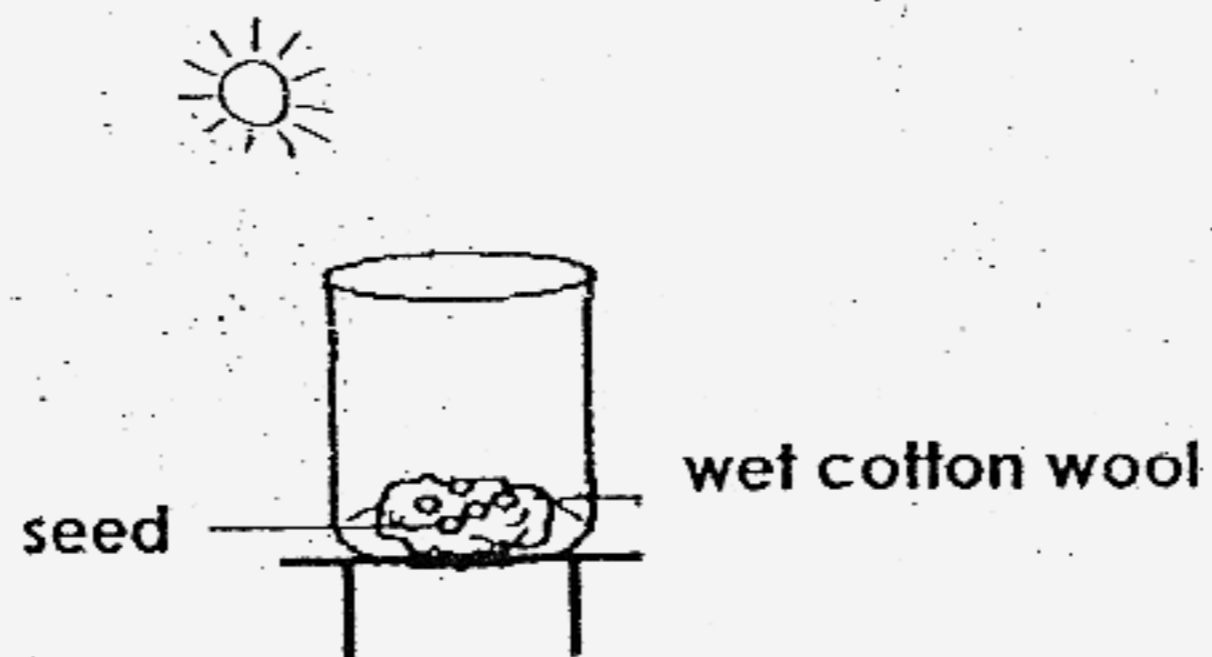
(2)



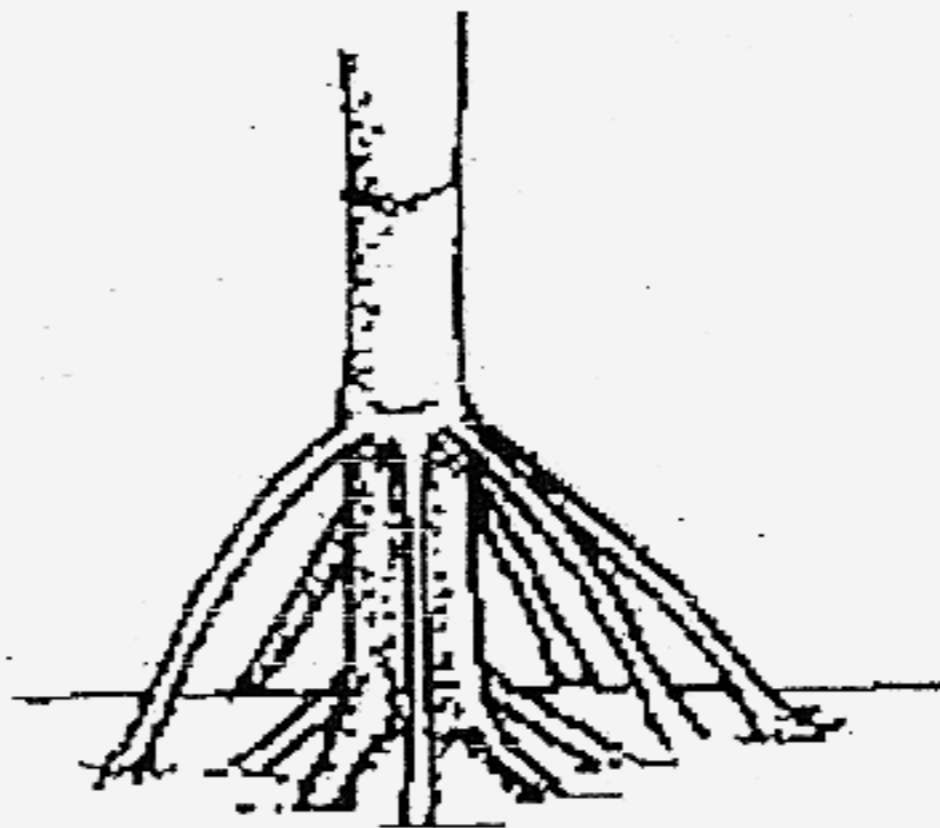
(3)



(4)



29.) Identify the type of roots in the picture below.



- (1) prop roots
- (2) storage roots
- (3) clasping roots
- (4) breathing roots

30. David grew some yeast and bacteria cells. He counted the number of yeast and bacterial cells under a microscope and recorded the results in the table below.

Time (minutes)	Number of Yeast Cells	Number of Bacterial Cells
0	5	5
20	5	10
40	5	20
60	10	40
80	10	80
100	20	150

What is the **shortest time** taken to see a change in the number of yeast and bacterial cells?

	Time Taken to See a Change in the Number of Yeast Cells	Time Taken to See a Change in the Number of Bacterial Cells
(1)	40 minutes	0 minutes
(2)	60 minutes	20 minutes
(3)	80 minutes	40 minutes
(4)	100 minutes	60 minutes

Tao Nan School
Primary 3 Science End-Of-Year Examination 2007

Name : _____ ()

Marks : _____ /40

Class : P3 ()

Parent's Signature: _____

Section B (40 marks)

Write your answers in the spaces provided.

31. Complete the following table.

(3 marks)

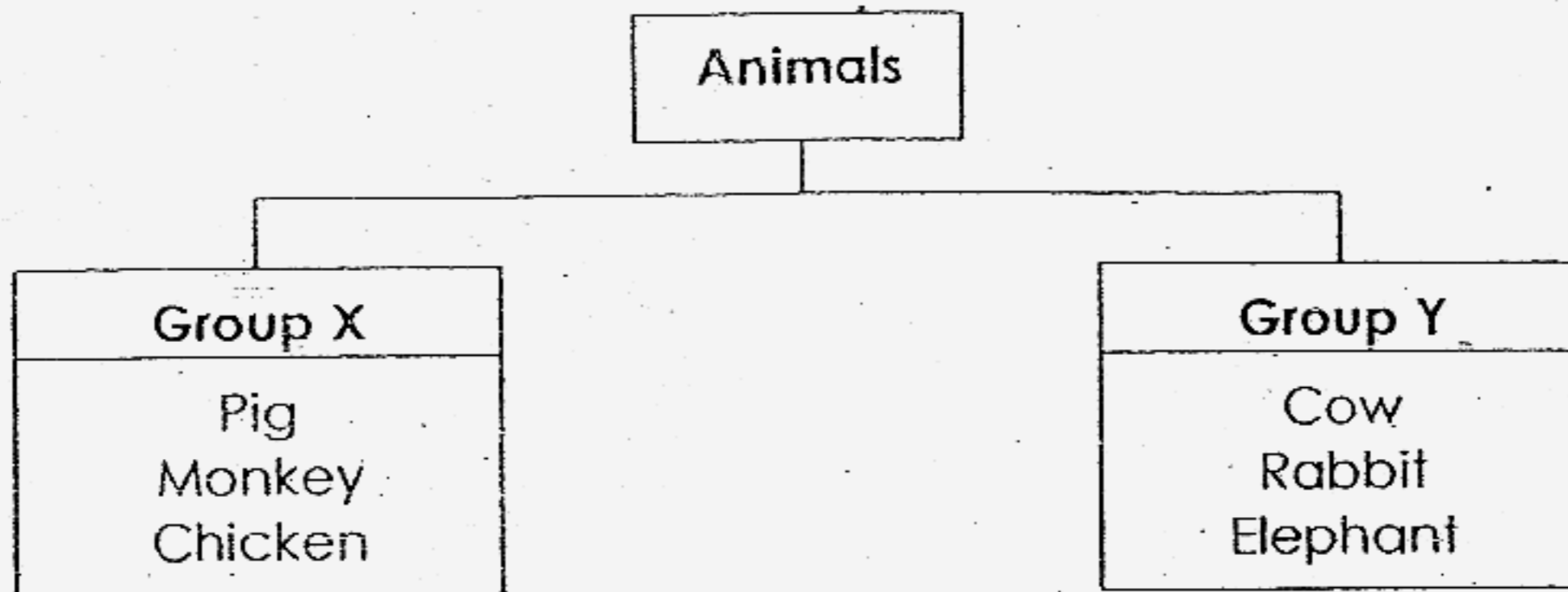
	Animals	Movements	Outer Body Coverings
i)	Whale		
ii)	Sparrow		
iii)	House lizard		

32. Fill in each blank with the most suitable word.

(2 marks)

A cockroach is an insect. It has a _____ stage life cycle.
 The female cockroach lays its _____ in a dark place. The
 young of a cockroach is called a _____. It looks quite
 similar to the adult. It _____ a few times before it becomes
 an adult.

33. Study the classification chart below.



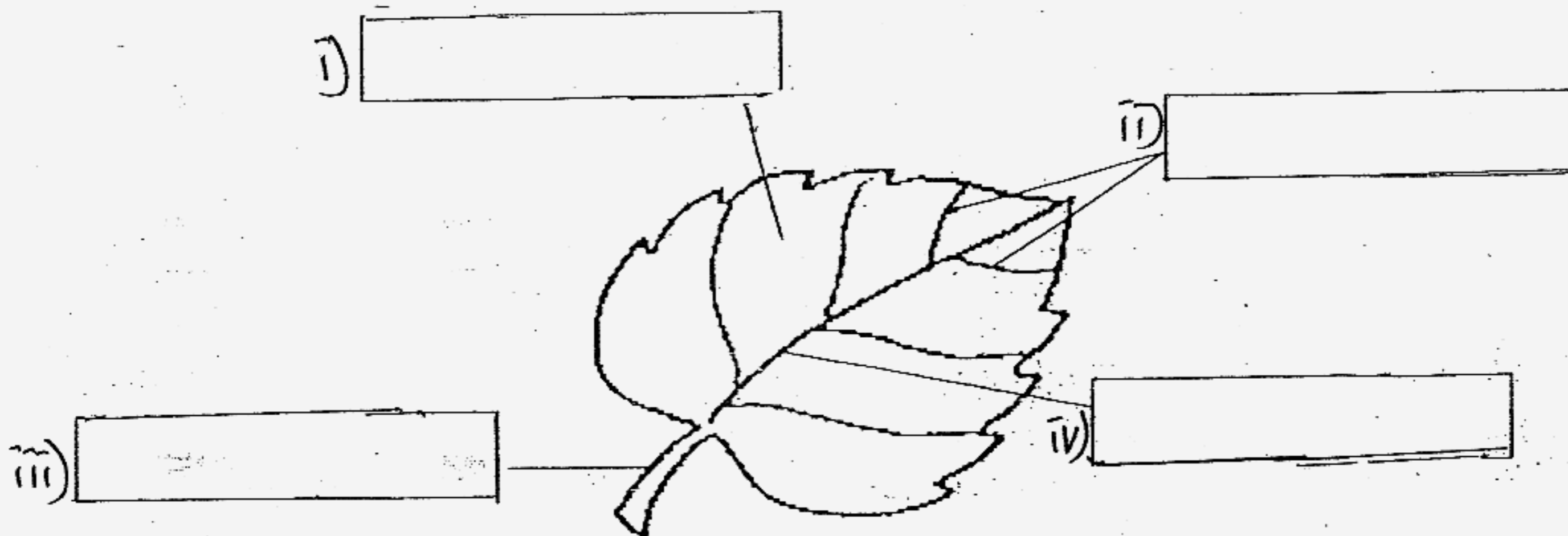
(a) Identify the headings represented by **Group X** and **Group Y**. (2 marks)

Group X : _____

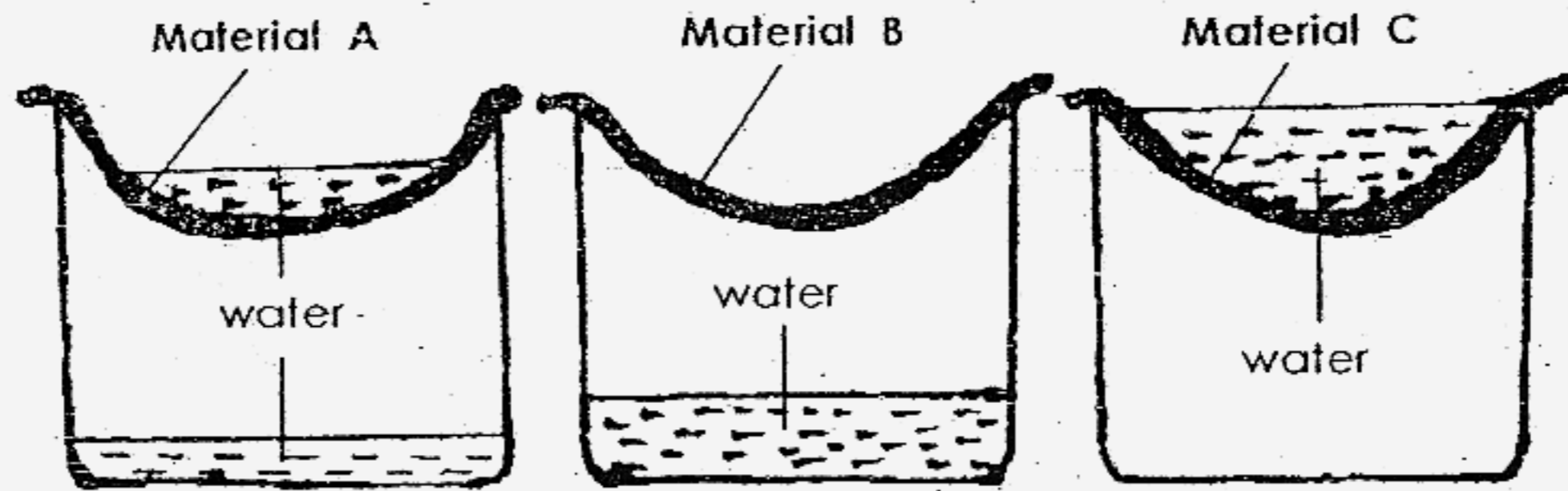
Group Y : _____

(b) Which group, Group X or Group Y does a giraffe belong to? (1 mark)

34. Identify the parts of the leaf below. (2 marks)



35. Leon tested three different materials to find out which is the best for making an umbrella. Below are the results of his test.



(a) Based on the results, which material is the best for making an umbrella? (1 mark)

(b) Give a reason for the selection of the material in (a). (1 mark)

(c) Arrange Materials A, Material B and Material C from the most waterproof to the least waterproof. (1 mark)

most least

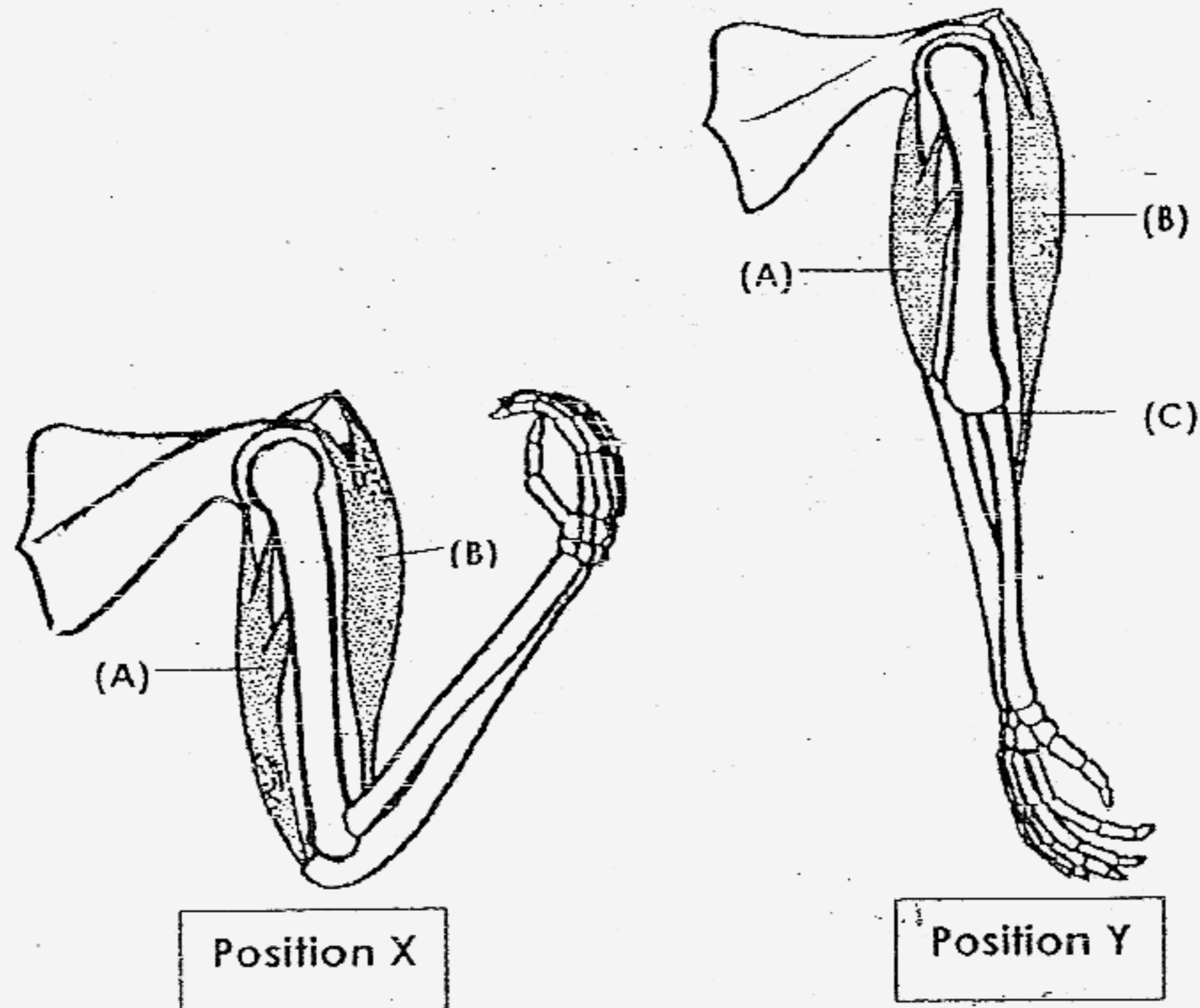
36. Study the table below.

Property \ Material	Transparent	Waterproof	Breakable	Floats On Water
A	✓	✓		
B	✓	✓	✓	
C		✓		✓

(a) Based on the above table, which material is most suitable for making a boat? (1 mark)

(b) Name an **object** that is made of Material B. (1 mark)

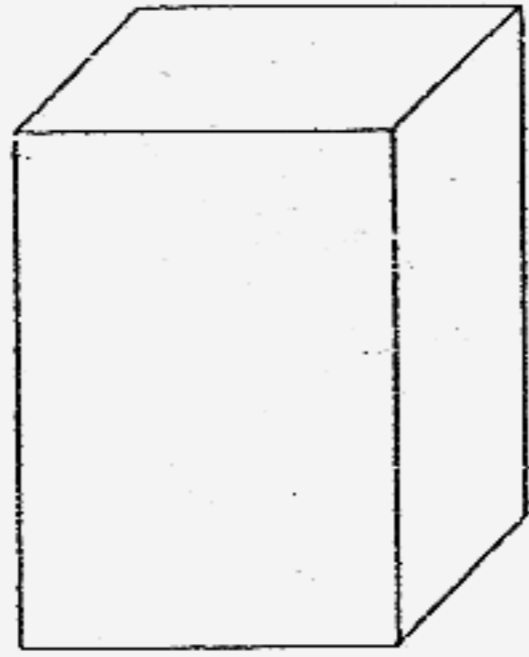
37. The diagram below shows part of the skeletal and muscular systems of our arms in two different positions.



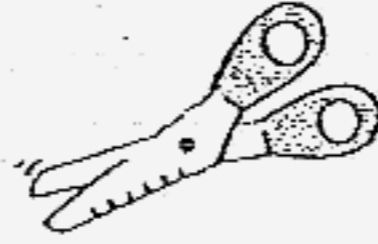
Read the following statements about the arms and write "T" if the statement is **true** and "F" if it is **false** in the brackets provided. (2 marks)

- (a) At position X, muscle (A) is relaxed. (F)
- (b) At position Y, both muscles, (A) and (B) are relaxed. (F)
- (c) The joint at (C) allows movements of the bones in all directions. (F)
- (d) To move the arm from Position X to Position Y, the skeletal and muscular systems must work together. (T)

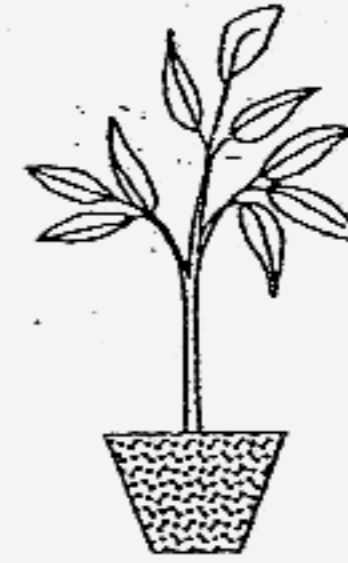
38. A pupil was told to conduct an investigation to find out if plants grow towards sunlight using the items shown below.



A styrofoam box with a cover

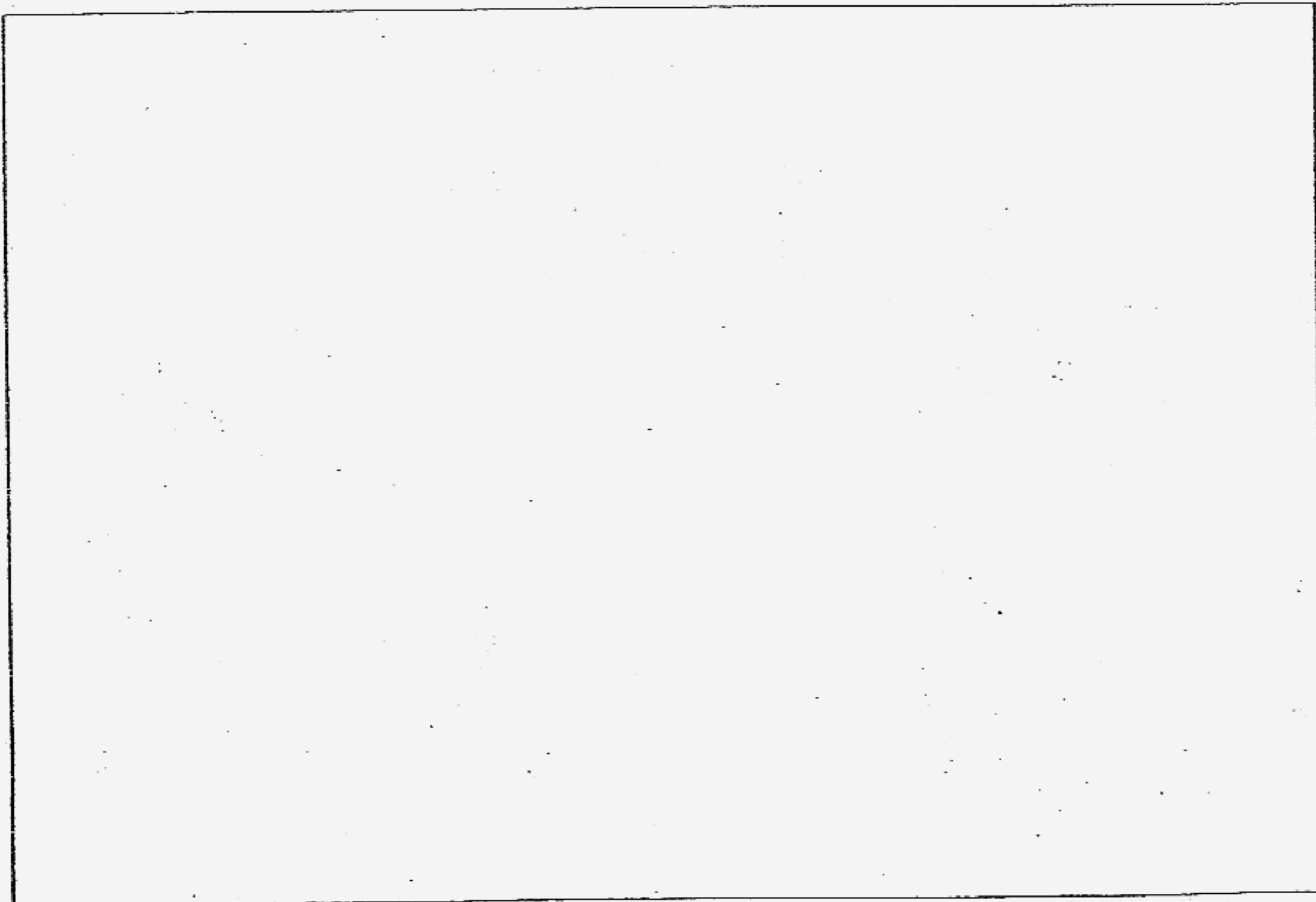


A pair of scissors



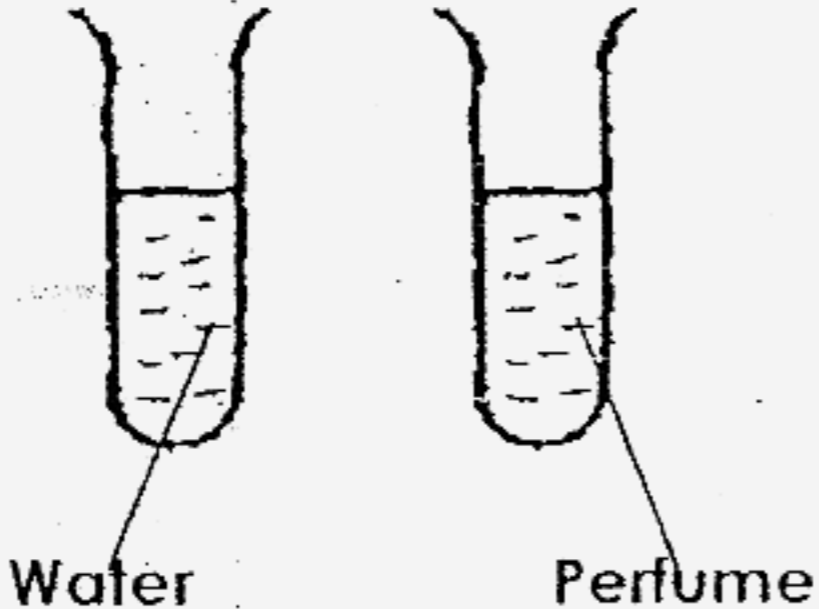
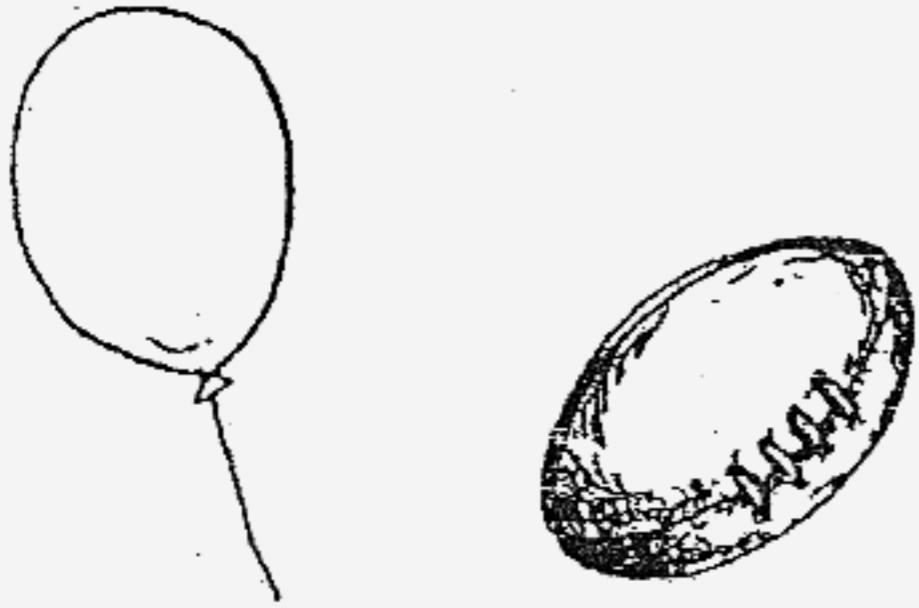
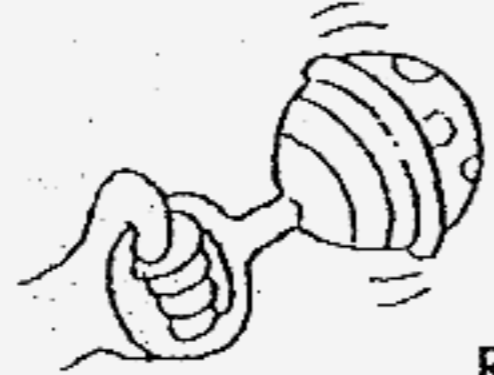
A potted plant

Draw a diagram in the box below to show the set-up at the end of the investigation. (2 marks)

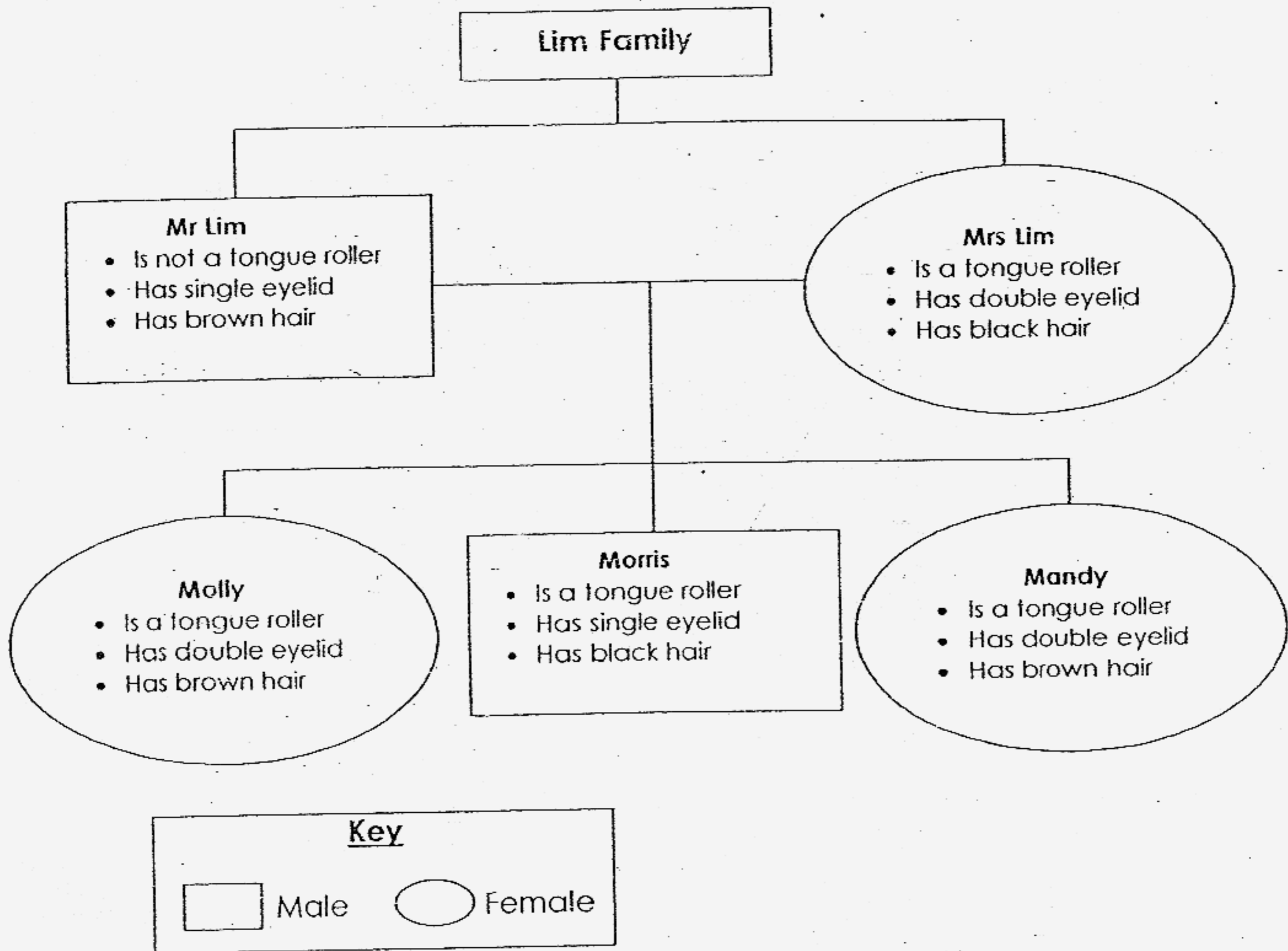


39. Max was blindfolded and was given the following tasks.

Identify the sense organs that will help him to perform the tasks in the boxes provided. (3 marks)

Tasks	Sense Organ/s that will help him
<p>i) Which test tube contains perfume?</p> 	
<p>ii) Which object is a balloon?</p> 	
<p>iii) Describe this object.</p> 	

40. Study the family tree below.



(a) How many sons and how many daughters do Mr and Mrs Lim have? (1 mark)

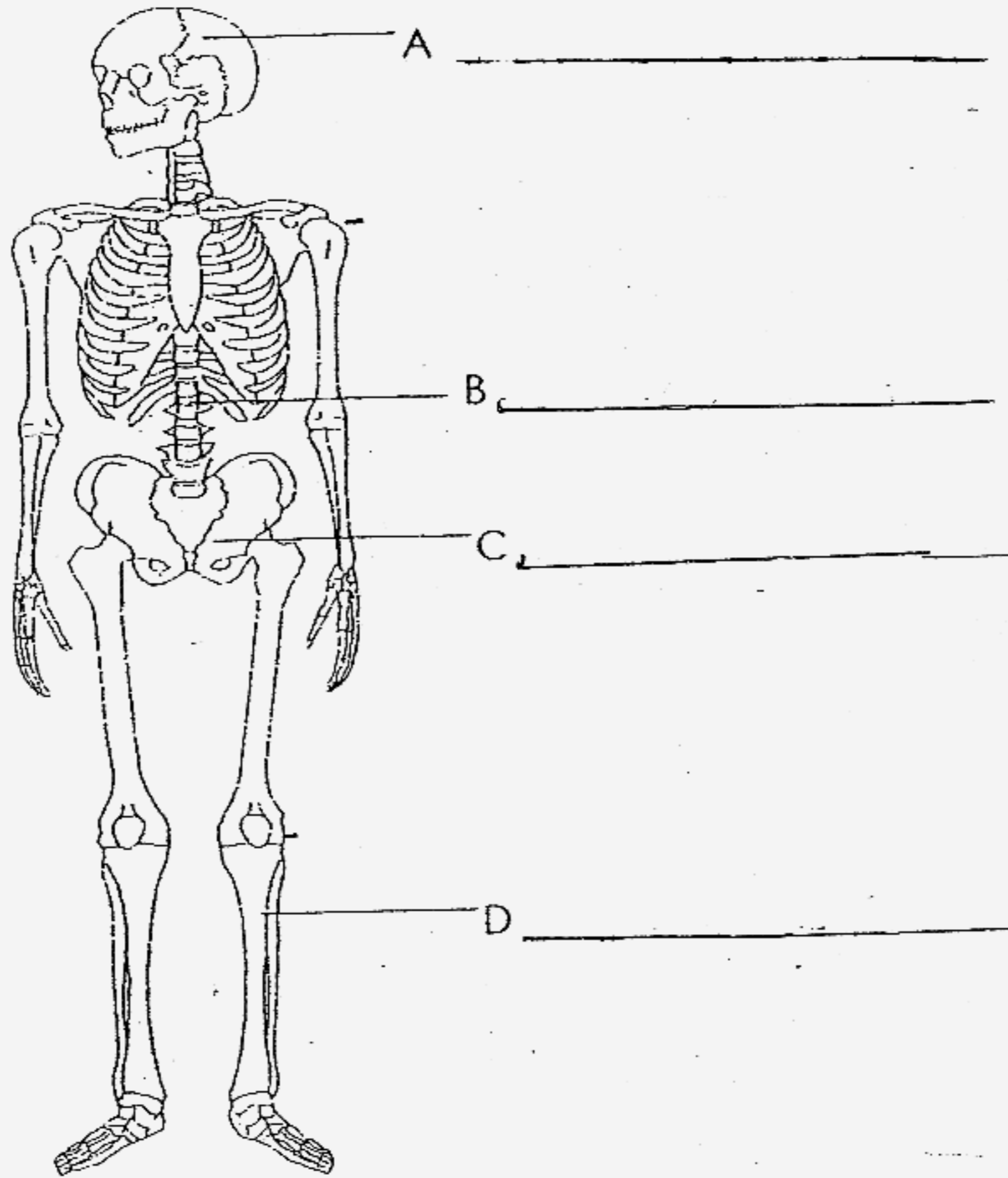
(b) Which child has inherited Mrs Lim's hair colour? (1 mark)

(c) If Mr and Mrs Lim have a pair of identical twins, which 2 children would they most probably be? (1 mark)

41. The diagram below shows the human skeletal system.

(a) Identify the parts, A, B, C and D.

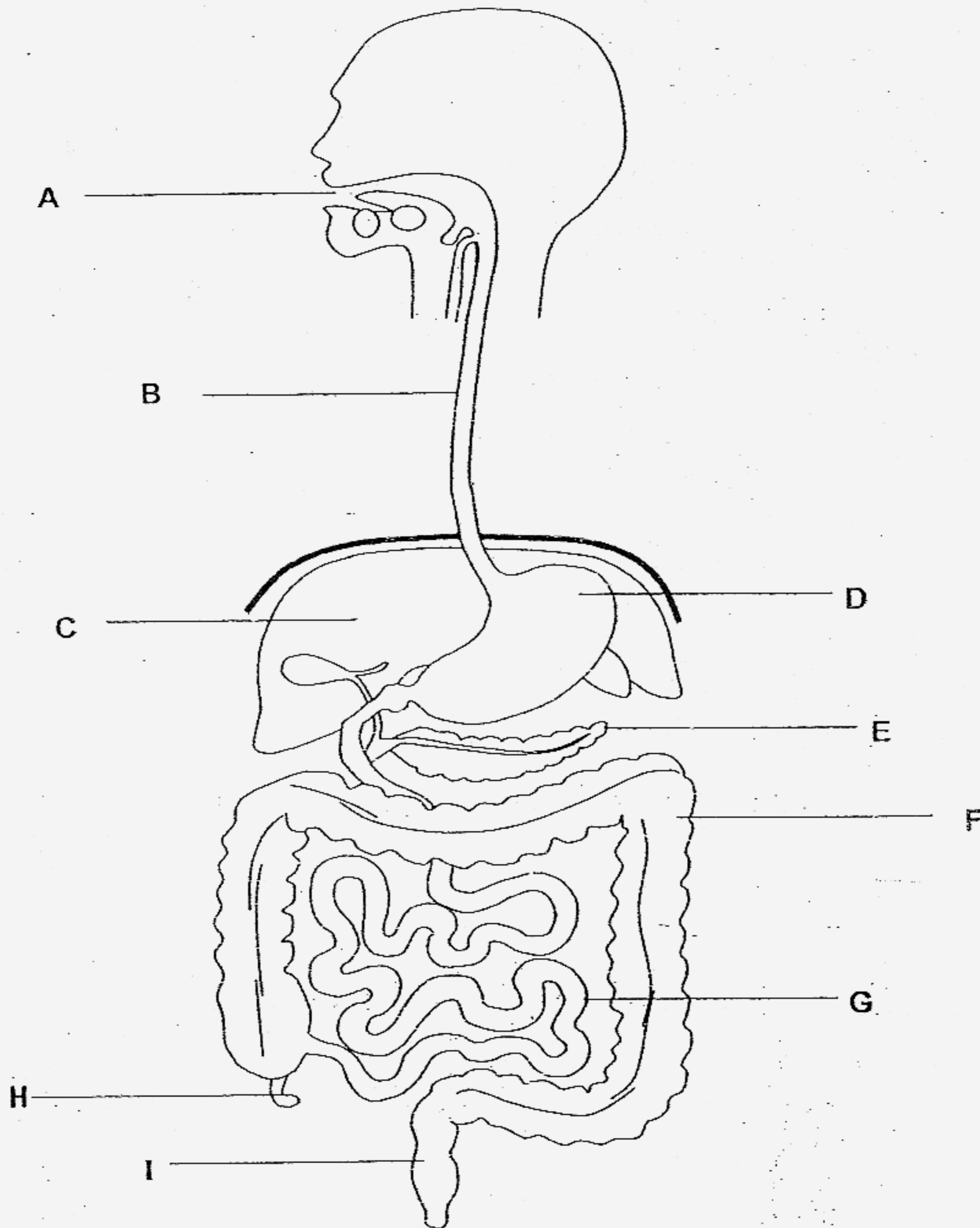
(2 marks)



(b) Label and name **one hinge joint** and **one ball and socket joint** in our body in the diagram above.

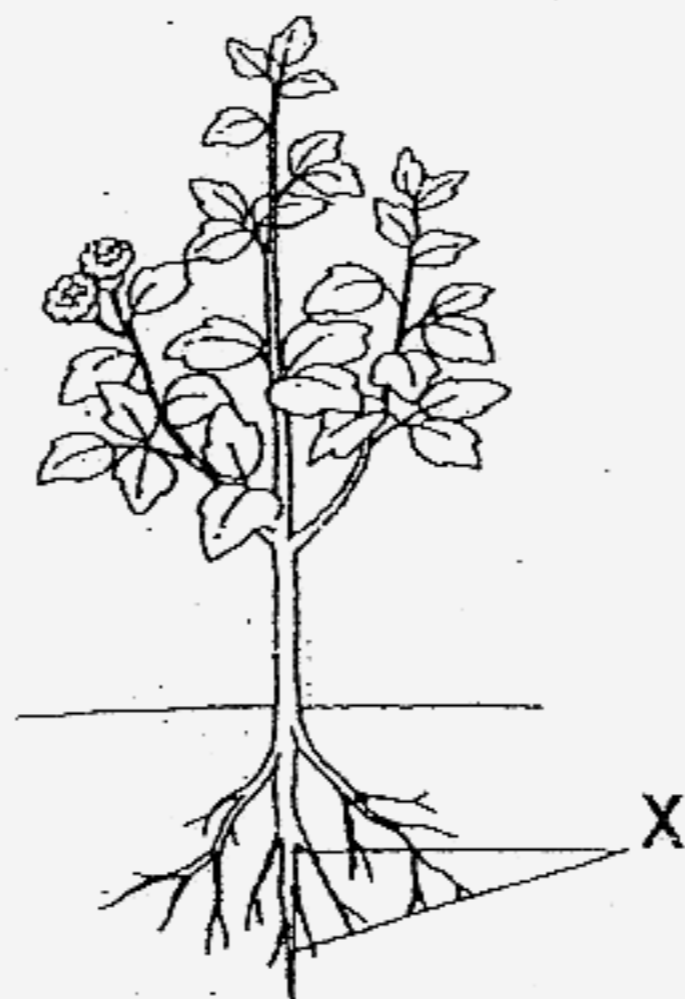
(2 marks)

42. The diagram below shows part of the human body.



List in order, the organs that food or drink passes on its way through the digestive system. Use the appropriate letters (A to I) from the diagram above. (2 marks)

43. Look at the picture of a plant below.



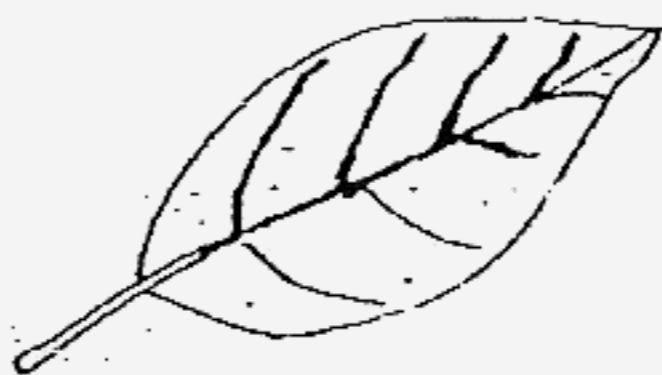
(a) Name the part that is labelled X. (1 mark)

(b) State one function of X? (1 mark)

44. Study the leaves below.



Leaf A



Leaf B

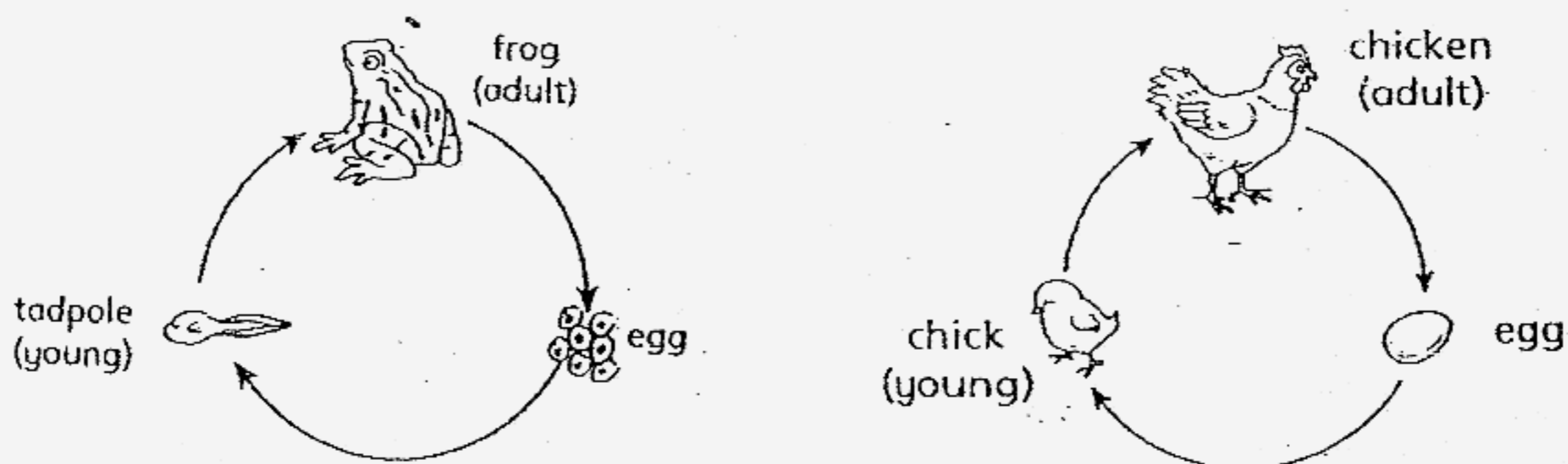


Leaf C

(a) Identify the leaf that does not belong to the group. (1 mark)

(b) Explain your answer in (a). (1 mark)

45. Study the life cycles of a chicken and a frog below.



(a) State **one similarity** between the two life cycles. (1 mark)

(b) State **one difference** between the two life cycles at the egg stage. (1 mark)

Tao Nan Primary School

Primary 3 Science SA2 Exams (2007)**Answer Keys****SECTION A : (60 MARKS)**

Qn no.	Ans
1	1
2	3
3	3
4	2
5	3
6	4
7	2
8	1
9	4
10	3

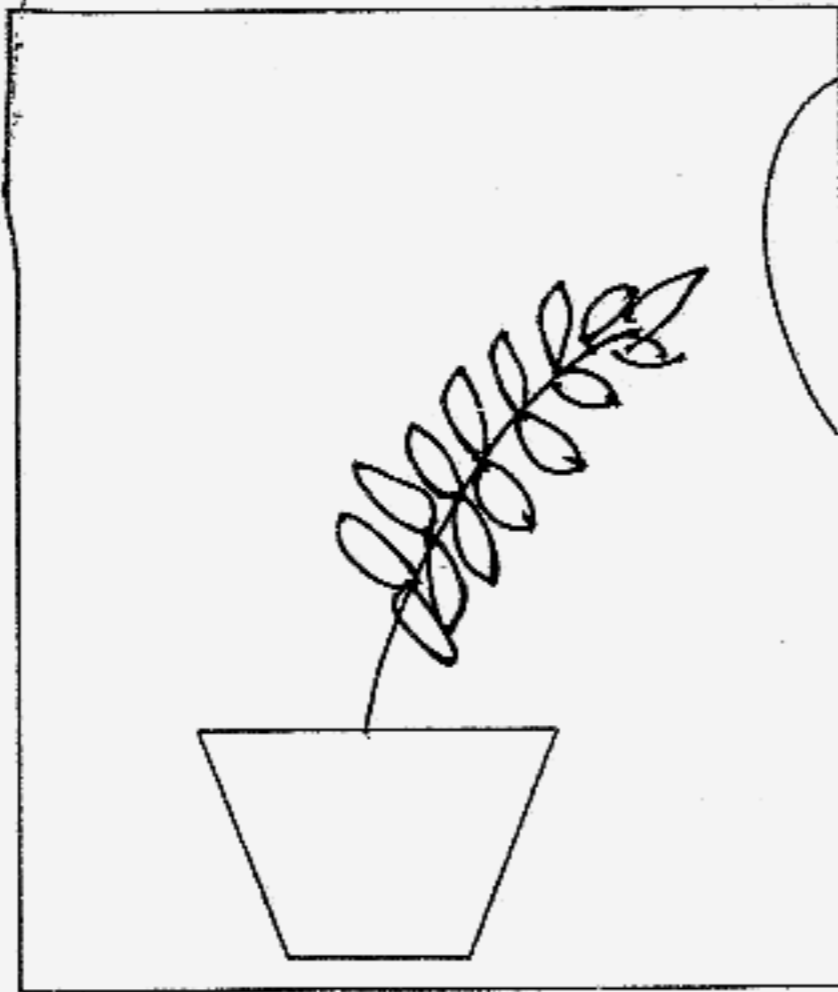
Qn no.	Ans
11	2
12	4
13	1
14	3
15	4
16	3
17	3
18	1
19	4
20	2

Qn no.	Ans
21	3
22	2
23	3
24	1
25	2
26	3
27	2
28	4
29	1
30	2

SECTION B (40 MARKS)

31. (i) Swim, hair
(ii) Fly, feather
(iii) Crawl, dry skin, scales
32. Three, eggs, nymph, moults
- 33a. X: Eat plants and animals
Y: Eat plants only
- 33b. A giraffe belongs to Group Y.
- 34a. (i) Leaf blade
(ii) Leaf veins
(iii) Leaf stalk
(iv) Main veins
- 35a. Material C.
35b. It is waterproof.
35c. Material C, Material A, Material B
- 36a. C
36b. Glass
- 37a. T
37b. F
37c. F
37d. T

38.

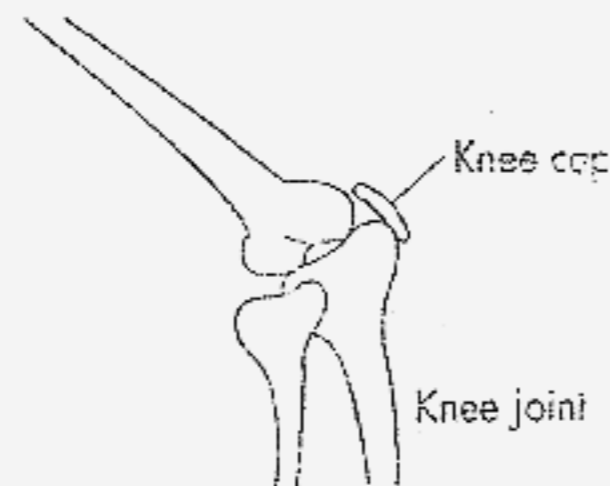


39. (i) Nose
 (ii) Skin
 (iii) Ears

- 40a. They have two daughters and one son.
 40b. Morris has inherited Mrs Lim's hair colour.
 40c. Molly and Mandy.

- 41a. A) Skull B) Back bone C) Hip bone D) Shin bone

41b.



Hinge Joint

42. A, B, D, G, F, I

- 43a. Roots
 43b. It holds the plant firmly on the ground.

- 44a. Leaf B.
 44b. Leaf B has an entire edge while leaf A and C have too the edges.

- 45a. They have 3 stages.
 45b. The frog eggs are jelly-like covering but a chicken egg is a hard covering.