

**NAN HUA PRIMARY SCHOOL
END-OF-YEAR EXAMINATION 2005
SCIENCE
PRIMARY THREE**

Name : _____ ()

Section A : _____ / 50

Class : Pr 3 _____

Section B : _____ / 30

Date : 31 October 2005

Total marks : _____ / 80

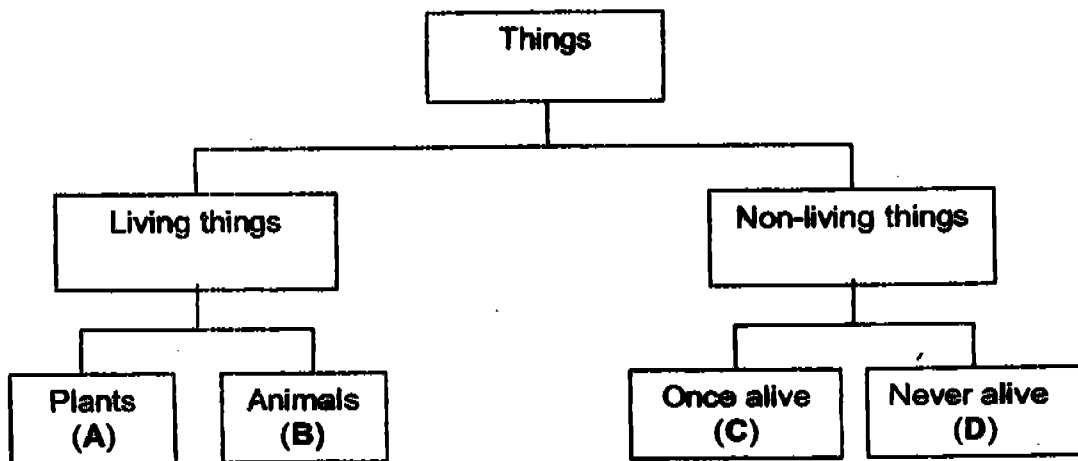
Duration : 1 h 30 min

Parent's Signature

Section A (25 X 2 marks)

Choose the correct answer for each question and write its number in the brackets provided.

- 1) Study the classification table below. A, B, C and D are things that are classified according to the groups that they belong to.

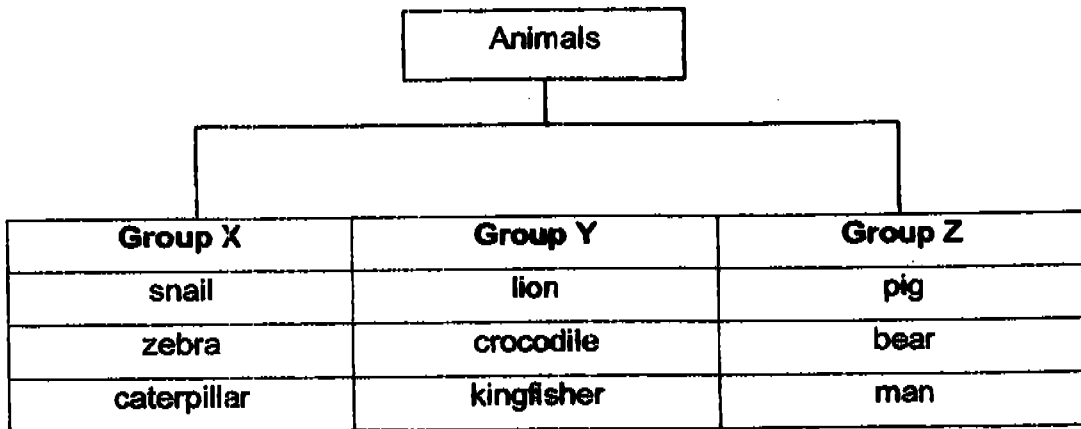


Which one of the following below shows the correct answers for A, B, C and D?

	A	B	C	D
(1)	grass	Leather	eraser	key
(2)	fern	Eagle	book	magnet
(3)	tree	Lizard	pen	envelope
(4)	rose	Tiger	glass	tyre

()

2) Study the classification table below.



The animals above are grouped according to their _____.

- (1) diet
- (2) habitat
- (3) movement
- (4) outer body covering

()

3) Four pupils made the following statements about fungi.

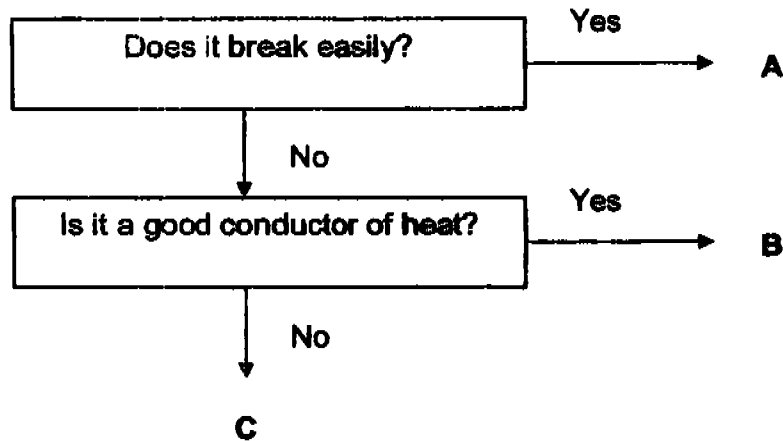
- Benedict : Some fungi are edible.
- Alice : Fungi can make their own food.
- Cheryl : Fungi can cause food to decay.
- Dennis : Fungi are of different shapes and sizes.

Who has made a wrong statement?

- (1) Benedict
- (2) Alice
- (3) Cheryl
- (4) Dennis

()

4) The flow chart below shows the properties of some materials.



What material is A, B and C made of?

	A	B	C
(1)	ceramic	wood	rubber
(2)	glass	plastic	metal
(3)	ceramic	rubber	wood
(4)	glass	metal	wood

()

5) The box below shows the properties of fabrics.

- | |
|--|
| x A : is cool and comfortable to wear
✓ B : absorbs perspiration
x C : is light and dries easily
✓ D : traps heat |
|--|

Mr Lim is choosing a fabric to make T-shirts for a group of Primary five pupils who are attending a school camp. Which properties should he consider?

- | | |
|----------------|----------------|
| (1) A, C and D | (2) B, C and D |
| (3) A, B and C | (4) A, B and D |

()

6) Which one of the following classifications is wrong?

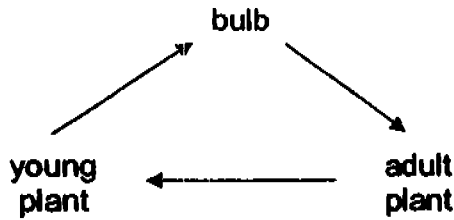
	2-stage life cycle	3-stage life cycle	4-stage life cycle
(1)	man	duck	butterfly
(2)	chick	housefly	dragonfly
(3)	whale	grasshopper	mosquito
(4)	tiger	cockroach	moth

()

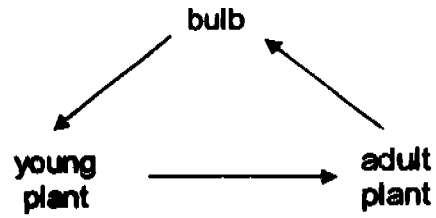
41

7) Which one of the following shows the life cycle of an onion?

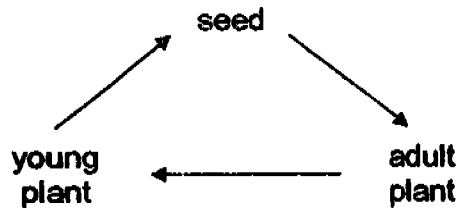
(1)



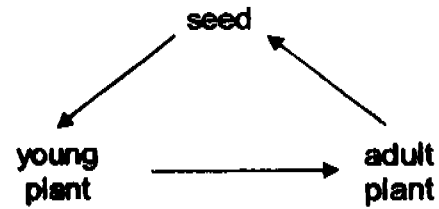
(2)



(3)



(4)



()

8) Which of the following statements about sense organs are correct?

- ✓A : They give us our senses
- ✓B : They help to protect us from danger.
- ✓C : They help to observe changes around us.
- ✓D : They help us to learn about the world we live in.

(1) A and B only

(2) B and C only

(3) A, B and C only

(4) A, B, C and D

()

9) Jim has just taken his breakfast that consists of two slices of bread with cheese and ham and a glass of milk. His food will be digested with the help of juices from his _____.

- A : mouth
- B : gullet
- C : stomach
- D : small intestine
- E : large intestine

(1) A and B only

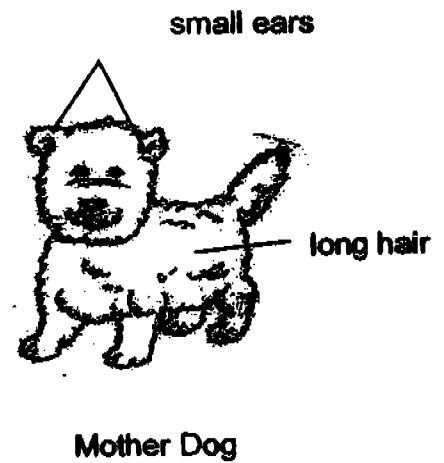
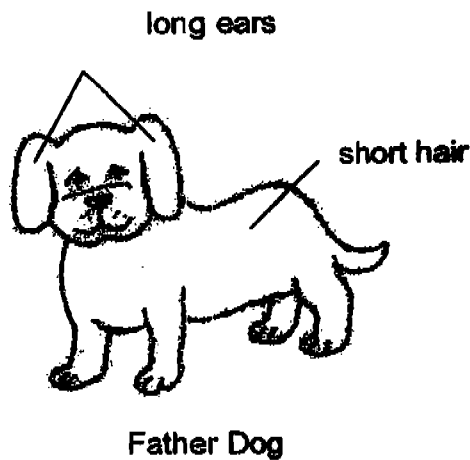
(2) A, B and C only

(3) A, C and D only

(4) A, B, C, D and E

()

10) The pictures below show two dogs and their young.



Which of the following statements about the pictures are true?

- ✓ A : The puppy inherits its father's long ears.
- ✓ B : Father dog passes his short hair to the puppy.
- ✓ C : The puppy inherits its mother's small ears.
- ✓ D : Mother dog passes her long hair to the puppy.

- (1) A and B
- (2) B and C
- (3) C and D
- (4) A and D

()

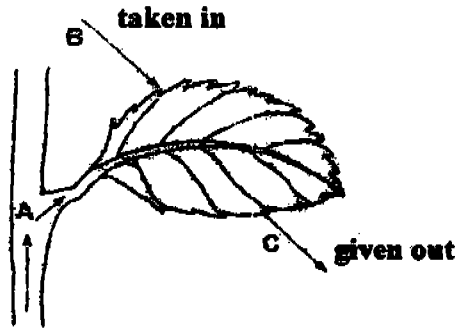
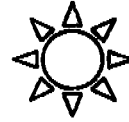
11) Our digested food enters the bloodstream through the walls of the _____.

- (1) gullet
- (3) small intestine

- (2) stomach
- (4) large intestine

()

12) Study the picture below. The arrows **A**, **B** and **C** represent _____, _____ and _____ respectively.



	A	B	C
(1)	sugar	oxygen	carbon dioxide
(2)	water	oxygen	carbon dioxide
(3)	water	carbon dioxide	oxygen
(4)	sugar	carbon dioxide	oxygen

()

13) Michelle decided to pluck off all the leaves on her chilli plant as it was full of aphids. What do you think will happen to the plant?



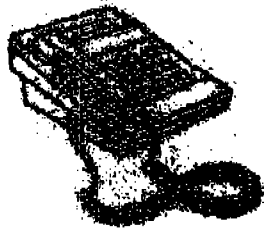
- (1) The plant will die.
- (2) The plant will grow new leaves again.
- (3) The plant will not make any more food.
- (4) The plant will not be able to survive for too long.

()

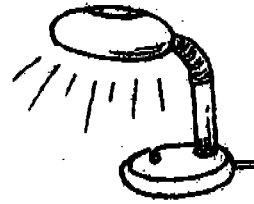
- 14) Which one of the following statements does not describe the function of the large intestine?
- (1) To absorb water into the system
 - (2) To transport undigested food to the anus
 - (3) To squeeze undigested food towards the rectum
 - (4) To absorb digested food substances into the bloodstream ()
- 15) Which one of the following statements about the skeletal and muscular systems is not true?
- (1) Muscles are attached to bones.
 - (2) Muscles and skin cover our skeleton.
 - (3) Our bones contract and relax to enable movement.
 - (4) Without joints and muscles, we cannot move our body. ()
- 16) Our rib cage protects our _____.
- A : heart
 B : windpipe
 C : lungs
 D : stomach
- (1) A and B only
 - (2) A and C only
 - (3) B and D only
 - (4) C and D only ()
- 17) Breathing consists of inhalation and exhalation. Which of the following system(s) is/are involved in breathing?
- A : Skeletal System
 B : Muscular System
 C : Respiratory System
- (1) C only
 - (2) A and B only
 - (3) B and C only
 - (4) A, B and C ()
- 18) Which one of the following statements about magnets is true?
- (1) The magnetic force becomes stronger towards the centre of the magnet.
 - (2) A magnet will lose one of its poles when it is cut into two pieces.
 - (3) A magnetic force is able to act from a distance.
 - (4) Like poles of a magnet attract another magnet. ()

19) Which one of the following objects does **not** have magnets in it?

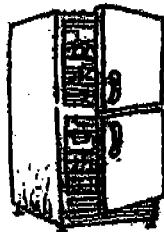
(1)



(2)



(3)



(4)



()

20) When two magnets are placed near to each other, they move in the directions as shown by the arrows.



Which one of the following statements is true?

- (1) A and C are like poles.
- (2) B and C are like poles.
- (3) B and D are like poles.
- (4) A and D are unlike poles.

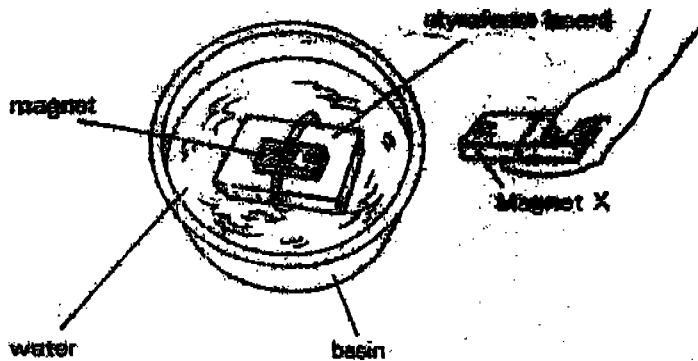
()

21) Which one of the following ways will **not** make the magnet lose its magnetism?

- (1) Coat it with paint
- (2) Hit it with a hammer
- (3) Heat it over the flame
- (4) Drop it onto the floor several times

()

22) Study the experiment set-up shown below.

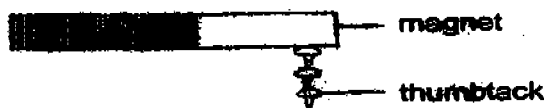


When magnet X is brought near to the basin, the styrofoam board will _____.

- (1) remain still
- (2) move towards magnet X
- (3) move away from magnet X
- (4) sink to the base of the basin

()

23)

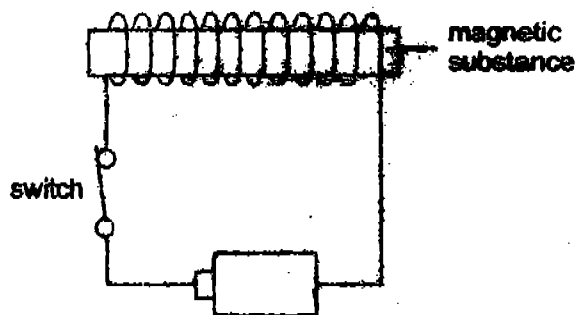


Which one of the following statements **best** explains the attraction of the thumbtacks to the magnet in one long string?

- (1) The magnet is strong enough to attract all the thumbtacks.
- (2) Each thumbtack is very light and is able to attract each other.
- (3) Thumbtacks always get attracted to a magnet in an orderly way.
- (4) Each thumbtack has become a temporary magnet that is able to attract the next thumbtack.

()

24) Which of the following will affect the strength of the electromagnet shown below?

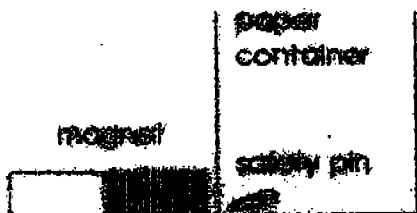


- A : Number of batteries
- B : Strength of the batteries
- C : Location of the switch
- D : The number of turns of wire around the magnetic substance

- (1) A and B only
- (2) A, B and C only
- (3) A, B and D only
- (4) A, B, C and D ()

25) David wanted to remove the safety pin from each of the containers by sliding the magnet along the outside of the containers. Which one of the following containers was he unable to remove the safety pin from?

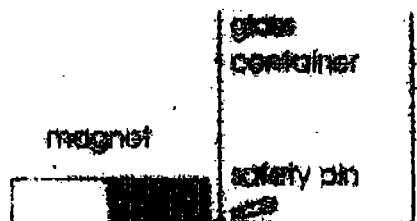
(1)



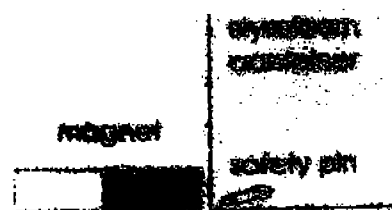
(2)



(3)



(4)



()

Name : _____ ()

Marks

30

Class: Pr 3 _ _

Section B (30 marks)

Answer all the questions below.

26) In the table below, write the characteristics of living things shown by each of the situations. (2m)

	Situations	Characteristics of living things
a)	The birds flew away when the hunter fired his gun.	They can respond to sound.
b)	The height of some seedlings increased by 3 cm after 2 days.	
c)	Paul found an empty egg case of a cockroach and a few nymphs crawling behind the bookshelf.	

27) Mrs Lim is buying a cup for her two-year-old son who is learning to drink by himself.



plastic cup

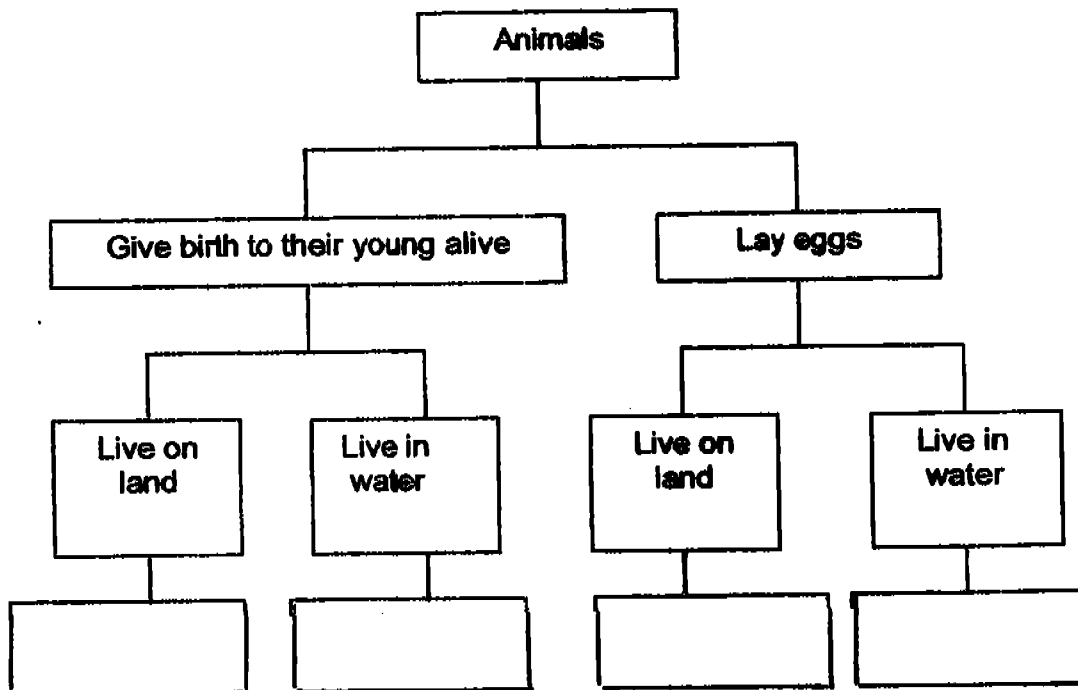


ceramic cup

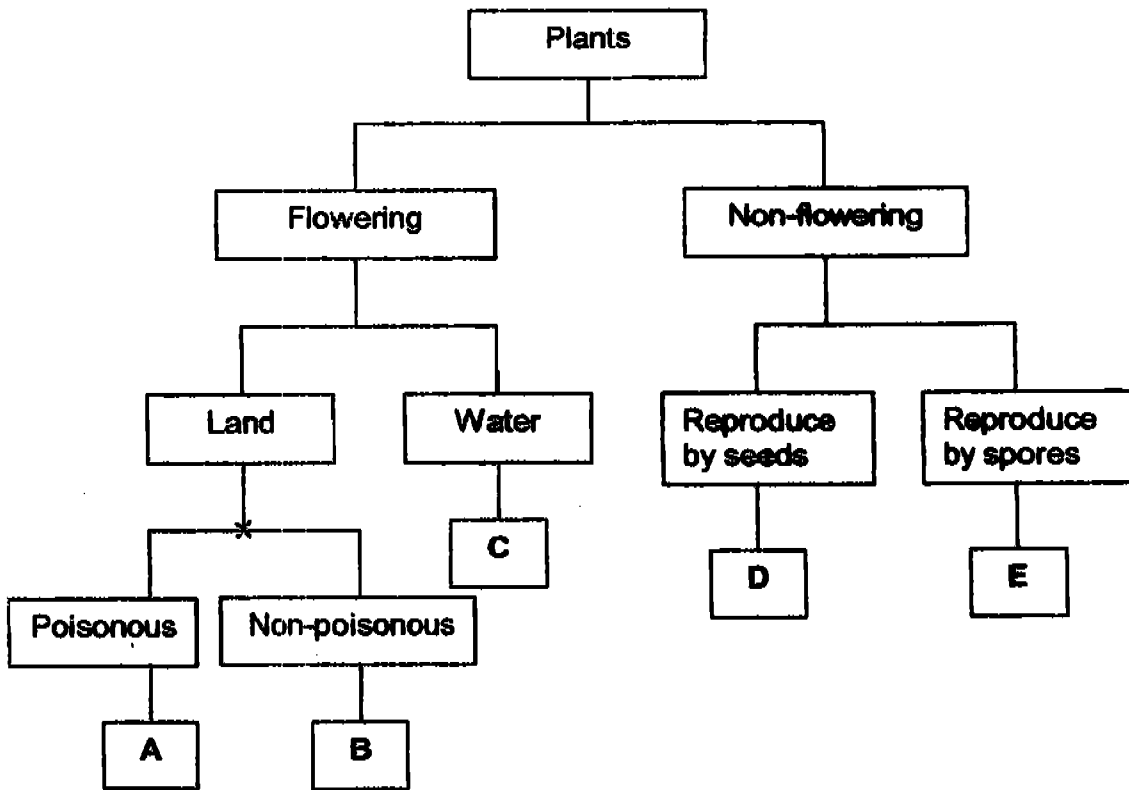
Mrs Lim chooses the _____ cup because it is _____
and _____ (3m)

28) Choose the correct animal from the box below to complete the classification table. (2m)

swordtail goldfish dog chicken



29) Study the classification table below.

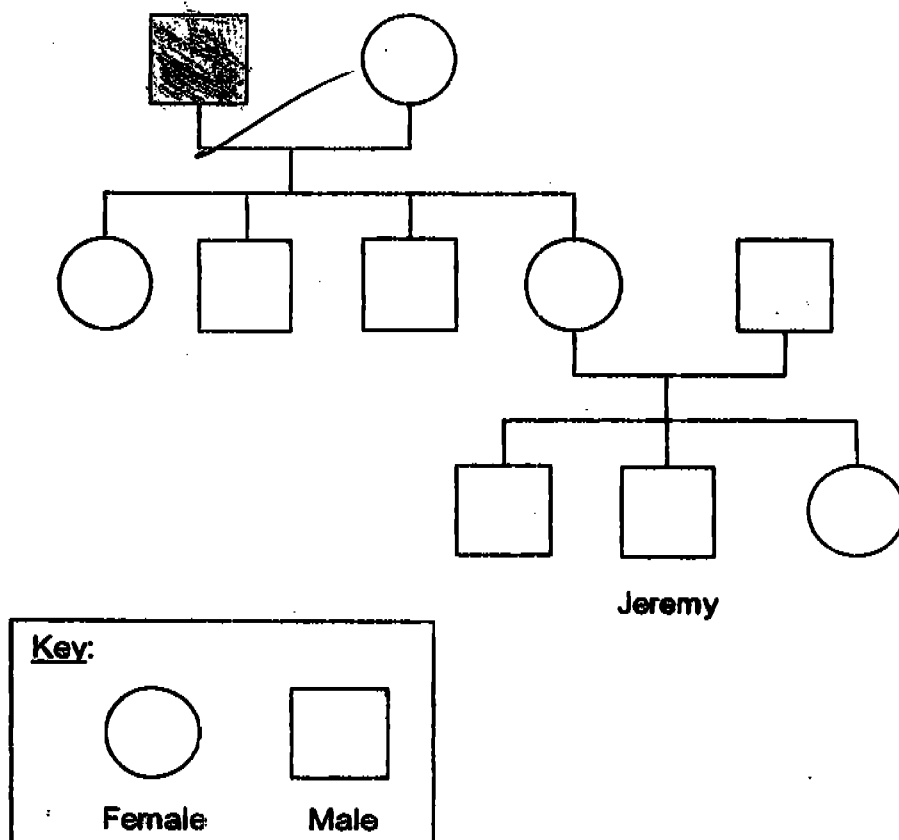


Based on the classification table above, where would you put the following plants? Write the correct answer (A, B, C, D or E) in each blank.

(2m)

- a) Orchid _____
- b) Lotus _____
- c) Bird's Nest fern _____
- d) Pong pong fruit _____

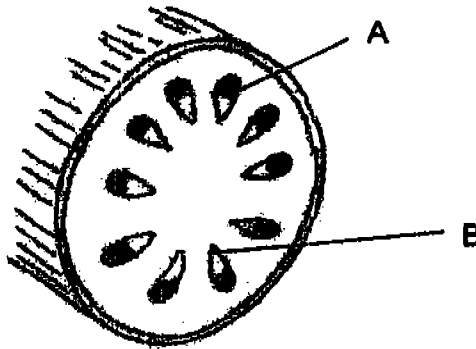
30) The diagram below shows Jeremy's family tree. Study it carefully and answer the questions that follow.



- a) **Shade** the symbol in the family tree that represents Jeremy's grandfather. (1m)
- b) How many brothers and sisters does Jeremy have? (1m)
-
- c) How many uncles does Jeremy have? (1m)
-

31) Fill in each blank with the most suitable word.

The stem contains many tiny tubes. Some of these tubes carry water and mineral salts from the _____ to the leaves and other parts of the plant. Another set of tubes in the stem carry _____ made by the leaves to the other parts of the plant. (1/2 m each)

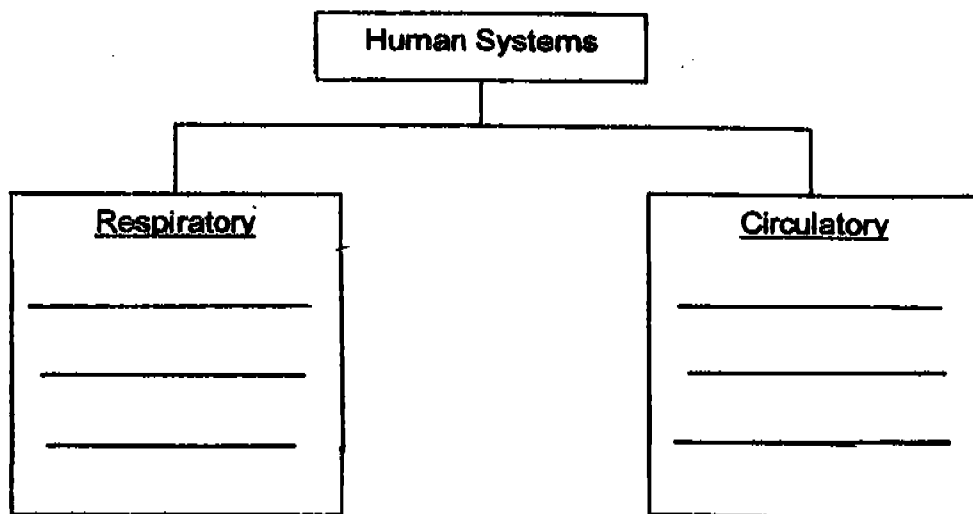


Tube A carries _____

Tube B carries _____

(1/2 m each)

32) Our body has different systems that perform different functions. Classify the following body parts into two groups according to the systems they belong.



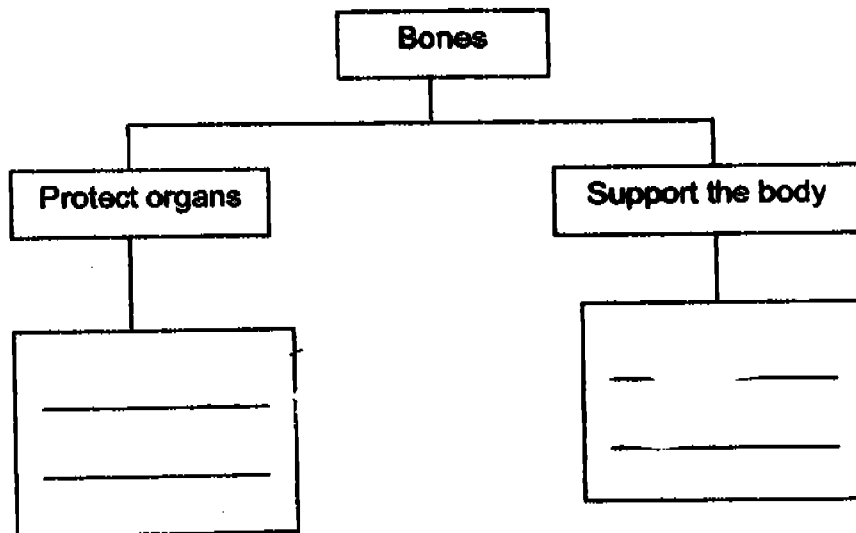
(1/2 m each)

33) Jack was in the cinema watching "Star Wars" with his parents. Beside each description, write down one sense that Jack used. (2m)

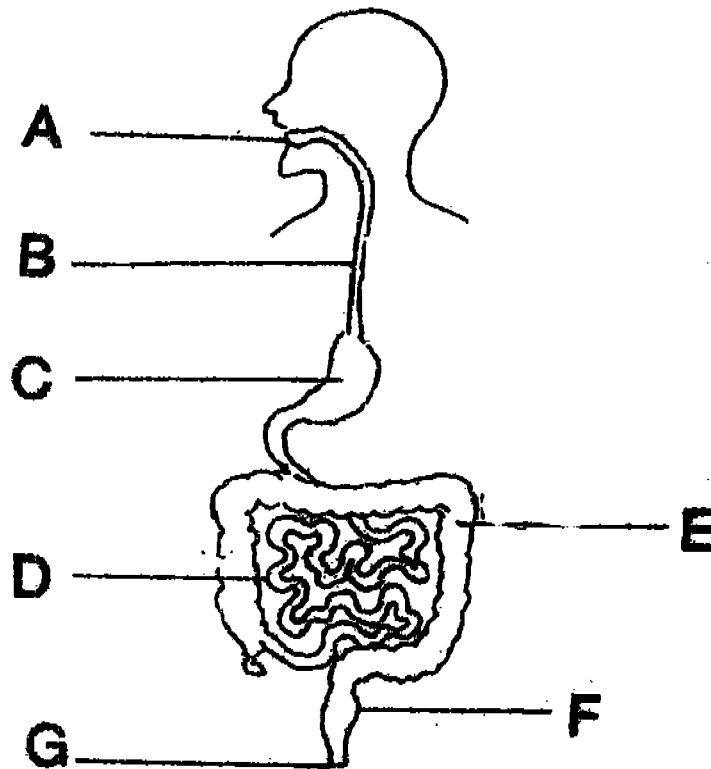
<u>Description</u>	<u>Sense used</u>
a) The sound effect was very good.	<u>hearing</u>
b) He enjoyed the mouth-watering popcorns and drinks.	_____
c) He felt very cold because of the strong air-conditioning.	_____
d) He enjoyed the action scenes in the movie.	_____
e) A lady sitting next to Jack wore a very strong perfume which made him feel like sneezing.	_____

34) Study the classification table below. Look at the bones in the box below and put them in the correct group. (2m)

backbone	ribs	hip bones	skull
----------	------	-----------	-------



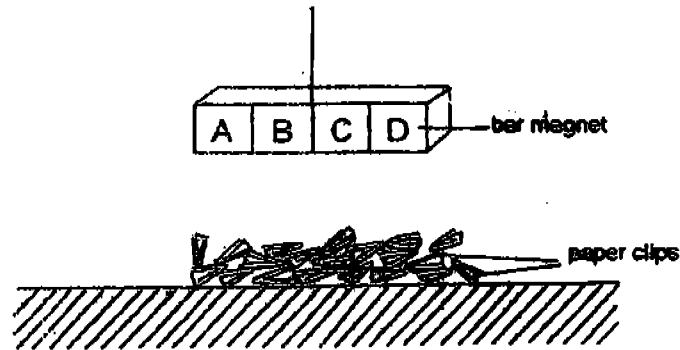
35) Refer to the diagram below.



Each of the processes below takes place in different parts of the digestive system. Write the correct letter (A, B, C, D, E, F or G) in each blank. (2m)

- a) Food is churned into smaller pieces and becomes partially digested after two to five hours. _____
- b) The process of digestion is completed here. _____
- c) The muscular contractions in it push the food into the stomach. _____
- d) Undigested food is stored here before it is removed from the body. _____

- 36) A bar magnet is divided into four equal parts, A, B, C and D. Before Peter brought the magnet near to a number of paper clips as shown in the diagram below, he asked his friends to predict the number of paper clips that would be attracted to each of the four parts. The table below shows their predictions.

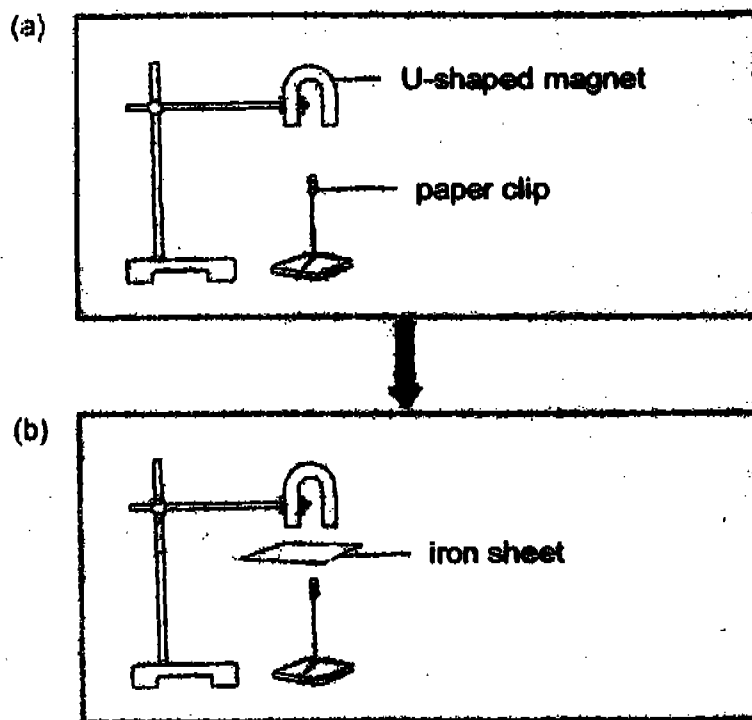


Names of friends	Number of paper clips			
	Part A	Part B	Part C	Part D
Bill	2	9	8	1
Jack	1	2	8	9
Sam	8	2	1	9

- a) Which one of Peter's friends made the most accurate prediction? (1m)

- b) Explain your answer to (a). (2m)

37) Study the diagram below.

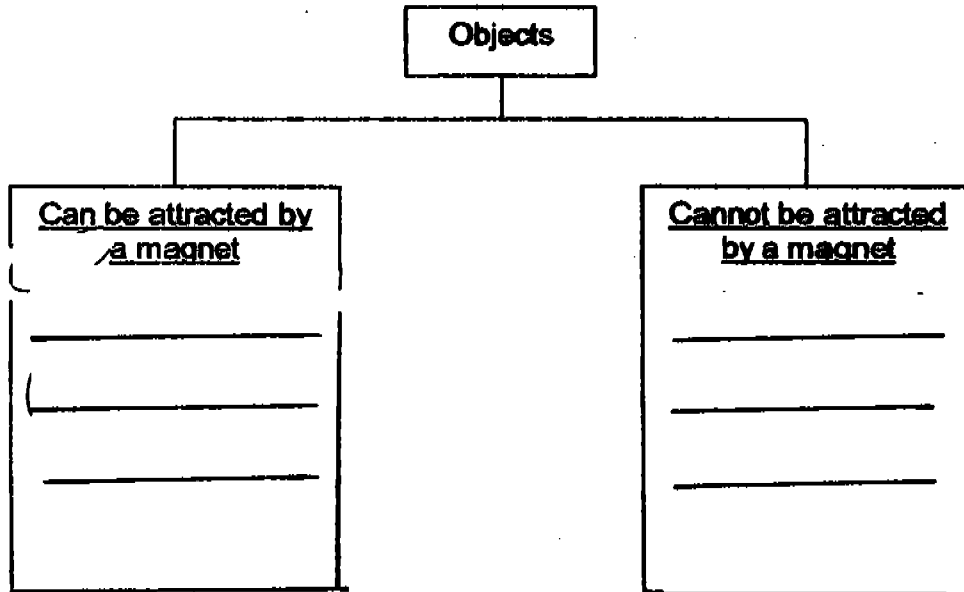


a) In Figure (a), explain why the paper clip remains floating. (1m)

b) In Figure (b), when an iron sheet is placed between the U-shaped magnet and paper clip, the paper clip drops. Explain why it is so. (1m)

38) Look at the objects in the box below and put them in the correct group. (3m)

aluminium foil	steel spoon	copper wire
safety pin	iron nail	gold chain



End-of-paper

NAN HUA PRIMARY SCHOOL
 PRIMARY 3 SCIENCE 2005
 SEMESTRAL ASSESSMENT 2

ANSWER SHEETS

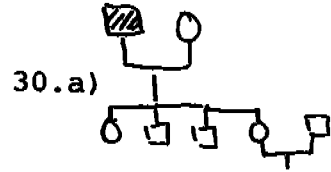
- 1. 2
- 2. 1
- 3. 2
- 4. 4
- 5. 3
- 6. 2
- 7. 2
- 8. 4
- 9. 3
- 10. 4
- 11. 3
- 12. 3
- 13. 2
- 14. 4
- 15. 3
- 16. 2
- 17. 3
- 18. 3
- 19. 2
- 20. 2
- 21. 1
- 22. 3
- 23. 4
- 24. 3
- 25. 2

26.b)They can grow c)They can move freely

27.platic cup,light,does not break easily.

28.dog, swordtail, shicken, goldfish.

29.a)B b)C c)E d)A



b)Jeremy has one uncle.
 c)Jeremy has two uncles.

31.roots, food
 A:food B:water

32.Respiratory:lungs,windpipe
 Circulatory:heart,blood vessels

33.b)taste c)touch d)sight e)smell

34.Protece organs:ribs,skull
 Support the body:hip bones,backbone

35.a)C b)D c)B d)F

36.a)Sam made the most accurate prediction
 b)The attraction of the magnet is strongest at the poles.

37.a)the U-shaped magnet's magnetic force is Attracting the paper clip.
 b)The U-shaped magnet's magnetic force cannot pass through the iron sheet as it is a magnetic material and the magnetic force cannot pass through magnetic materials.

38.Can be attracted by a magnet:safety pin,
 Iron nail,steel spoon.

Cannot be attracted by a magnet:aluminium foil,
 Gold chain,copper wire.