



**CATHOLIC HIGH SCHOOL
PRIMARY THREE
END-OF-YEAR EXAMINATION, 2007**

SCIENCE

Name: _____ ()

Class : Primary 3 _____

Date : 29 October 2007

BOOKLET A

30 Questions

60 Marks

Total Time for Booklets A & B : 1 hour 30 minutes

Instructions to Candidates

Do not open this booklet until you are told to do so.
Follow all instructions carefully.
Answer all questions.

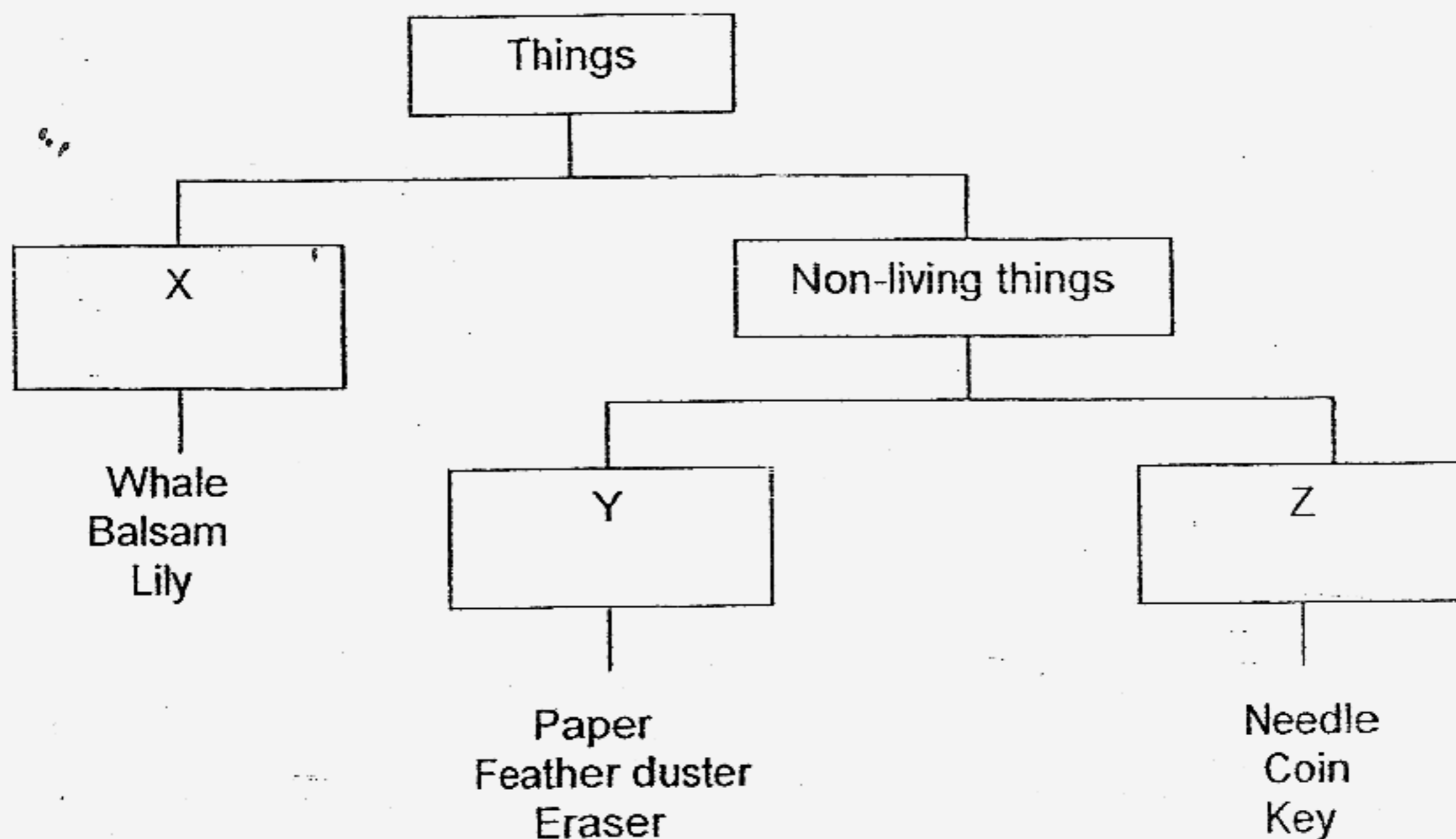
Section A: Multiple Choice Questions(60 marks)

For each question from 1 to 30, four options are given. One of them is the most suitable answer. Make your choice (1, 2, 3 or 4) on the Optical Answer Sheet.

1. Which of the following statements is incorrect?

- 1) Non-living things do not die.
- 2) Living things die quickly without air or water.
- 3) Living things can live for some time without food.
- 4) All living things move from place to place to get food, water and shelter. ()

2. Study the classification table below.



Which of the following can be placed under Y ?

- 1) Bread
- 2) Brick
- 3) Claypot
- 4) Nylon string ()

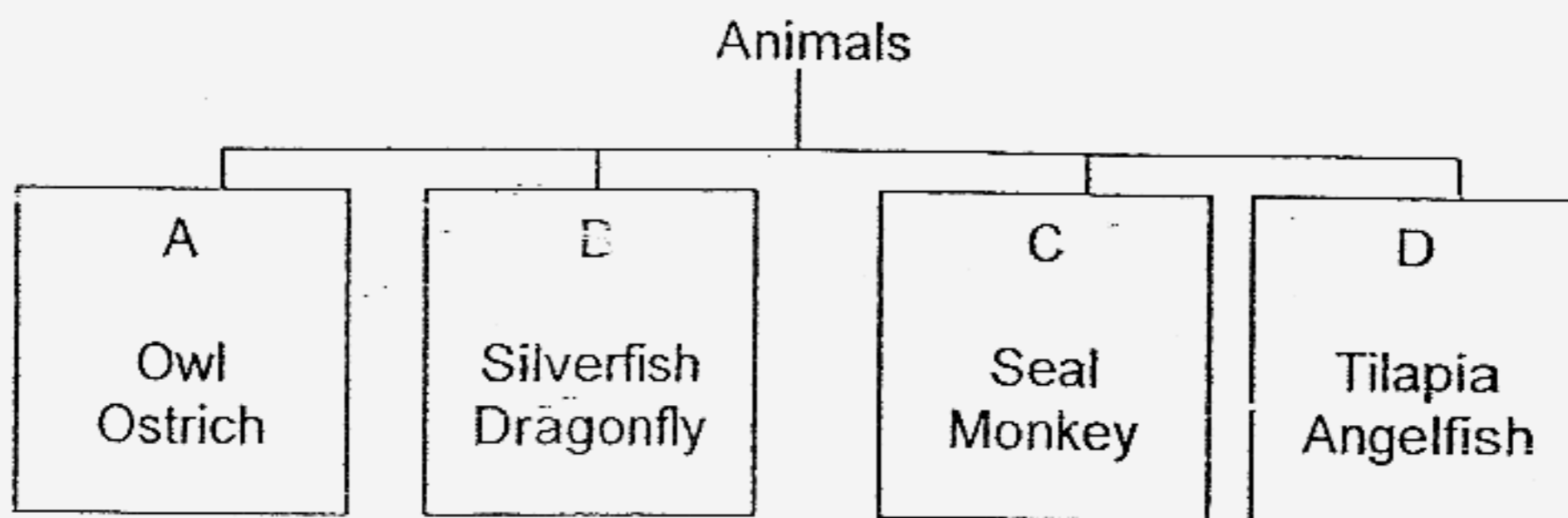
3. How is the Toadstool similar to the Rain tree?

- A They are poisonous.
- B They are fixed in position.
- C They cannot make its own food.
- D They respond to changes slowly.

- (1) A and C only
- (2) B and D only
- (3) A, B and C only
- (4) A, B, C and D

()

4.



In which group would you put the Bat?

- 1) A
- 2) B
- 3) C
- 4) D

()

5. The table below shows how a pupil classified plants into two groups.

Group A	Group B
Chrysanthemum Rose	Bird's nest fern Hydrilla

Which of the following is the best heading for the classification?

	Group A	Group B
(1)	Harmful plants	Useful plants
(2)	Inedible plants	Edible plants
(3)	Flowering plants	Non-flowering plants
(4)	Non-poisonous plants	Poisonous plants

()

6. Which of the following statements is true for the pupa stage in any life cycle?

- (1) The pupa does not eat.
- (2) The pupa is oval in shape.
- (3) The pupa lives on land only.
- (4) The pupa moults several times. ()

7. How many stages of the life cycle of a mosquito is/are spent in water?

- (1) 1
- (2) 2
- (3) 3
- (4) 4 ()

8. When humans reproduce, some characteristics are passed on to their children. Which of the following characteristics may be passed on?

- A Height
- B Fingerprints
- C Double eyelids

- (1) A and B only
- (2) A and C only
- (3) B and C only
- (4) A, B and C ()

9. Which of the following comparisons between the life cycles of a beetle and a butterfly is correct ?

	Statements	Beetle	Butterfly
1)	Lays eggs in water	No	Yes
2)	Four stages in its life cycle	Yes	No
3)	Feeds on plants at young stage	Yes	No
4)	The adult has six legs.	Yes	Yes

()

10. In what ways are the cockroach and grasshopper similar ?

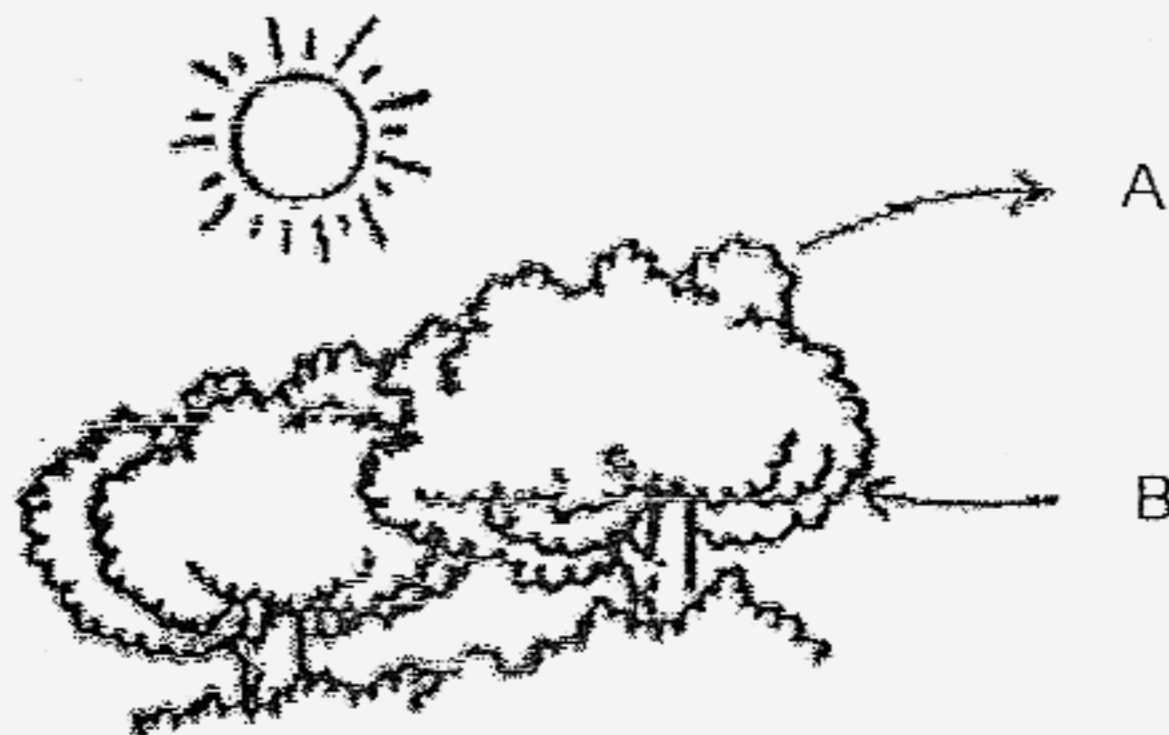
- A The young look like the adults.
- B They lay their eggs in the water.
- C Their nymphs eat the same food as the adults.
- D Their nymphs live in the same habitat as the adult.

- (1) A and B only (2) C and D only
- (3) A, C and D only (4) A, B, C and D ()

11. The green beans we get from provision shops will not germinate while they are in the packet because they do not receive any _____.

- (1) food (2) light
- (3) water (4) warmth ()

12. The diagram below shows the exchange of gases of a plant during photosynthesis in the day?



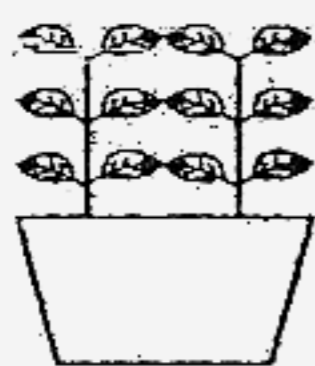
What are gases A and B?

	Gas A	Gas B
(1)	Carbon dioxide	Oxygen
(2)	Carbon dioxide	Water vapour
(3)	Oxygen	Carbon dioxide
(4)	Oxygen	Water vapour

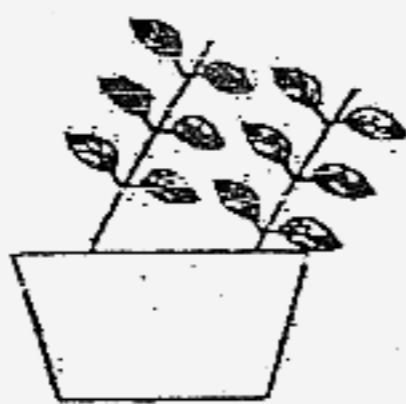
()

13. 3 similar plants were placed in an open field and covered with a black box. 2 of the boxes had a hole each made at different parts of the black box. The third box had 2 holes made at different parts of it.

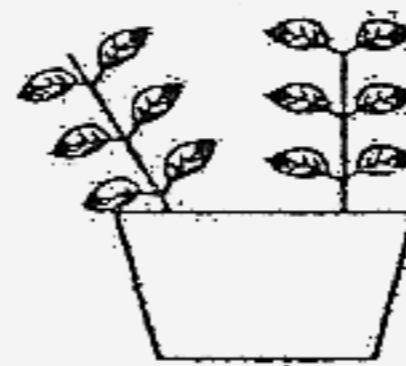
The diagram shows what the plants looked like after a week.



Plant A



Plant B



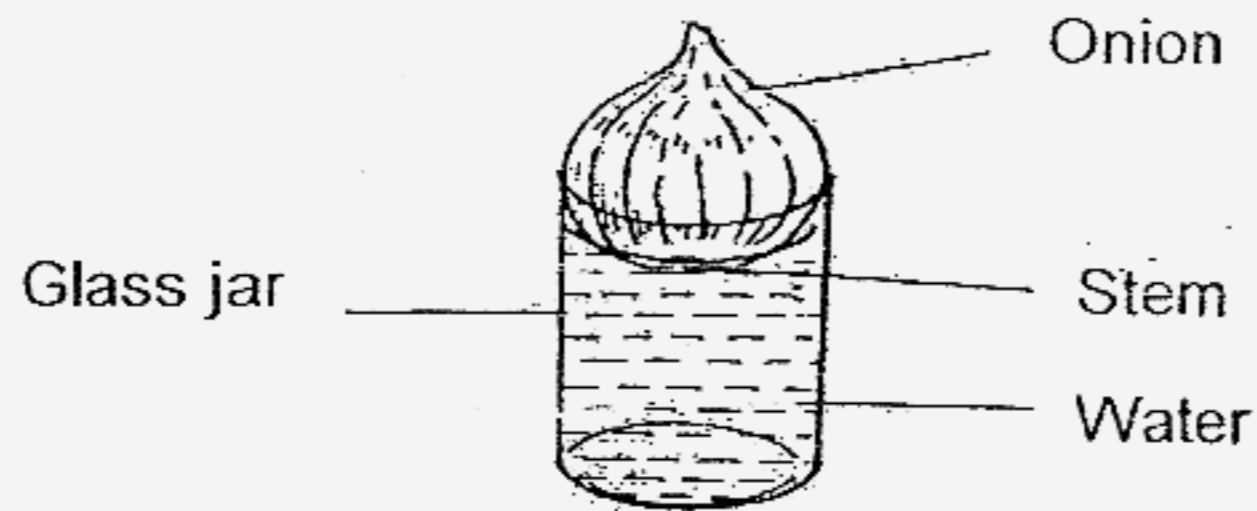
Plant C

Which one of the following correctly shows the boxes in which each plant was placed in?

	Pot A	Pot B	Pot C
(1)			
(2)			
(3)			
(4)			

()

14. Dawei placed an onion on top of a glass jar filled with water. The water level just covered the stem of the onion.

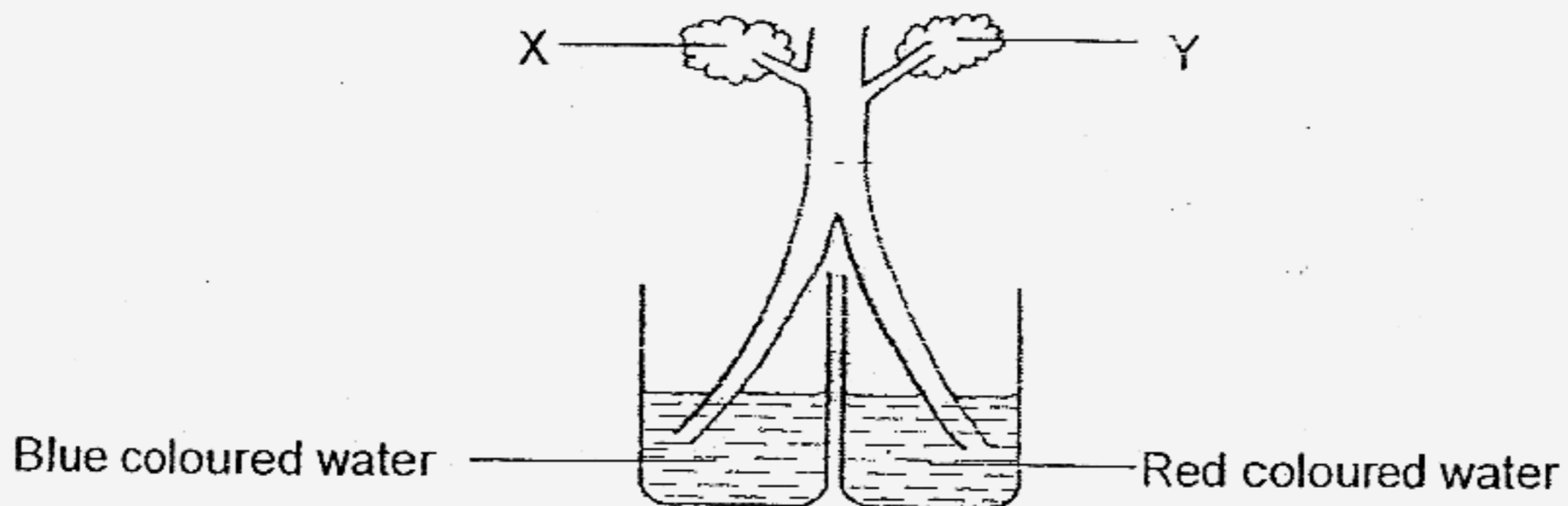


What did he observe after a few days ?

- A The water level fell.
- B The water level rose.
- C Roots started to grow.

- (1) A only (2) B only
 (3) A and C only (4) B and C only ()

15. Mrs Tan set up an experiment as shown below to illustrate the function of stem to her class. She split the celery stalk up to the middle of the stem. Each split part is then placed in a container of coloured water, as shown below. The pupils were to observe the colours of the leaves after three days.

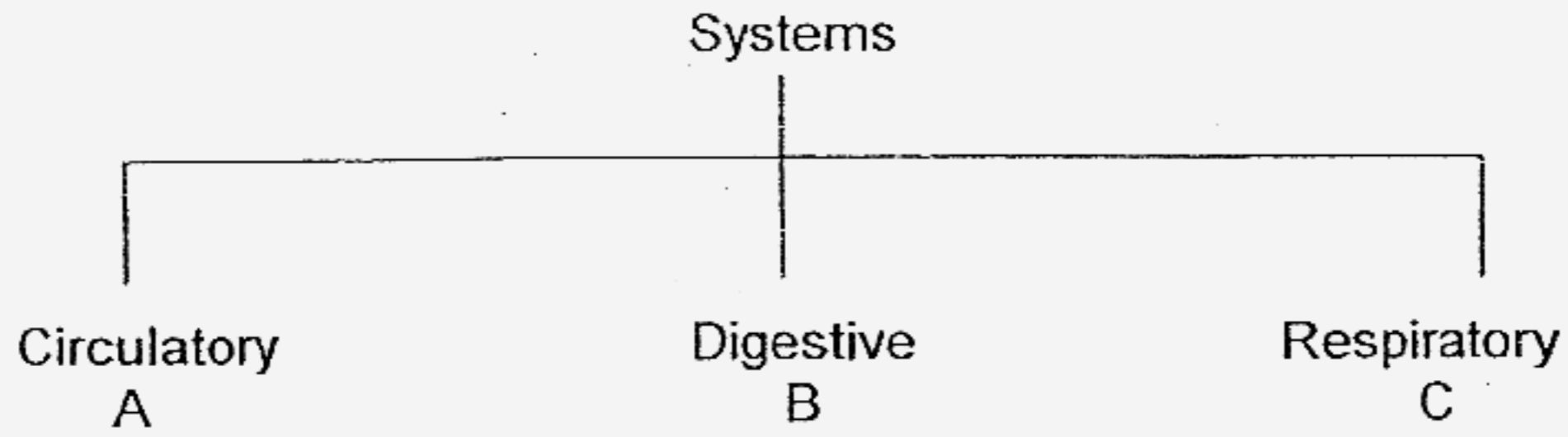


How would the leaves be stained after 3 days ?

	X	Y
(1)	Red	Blue
(2)	Blue	Red
(3)	Red	Red
(4)	Blue	Blue

()

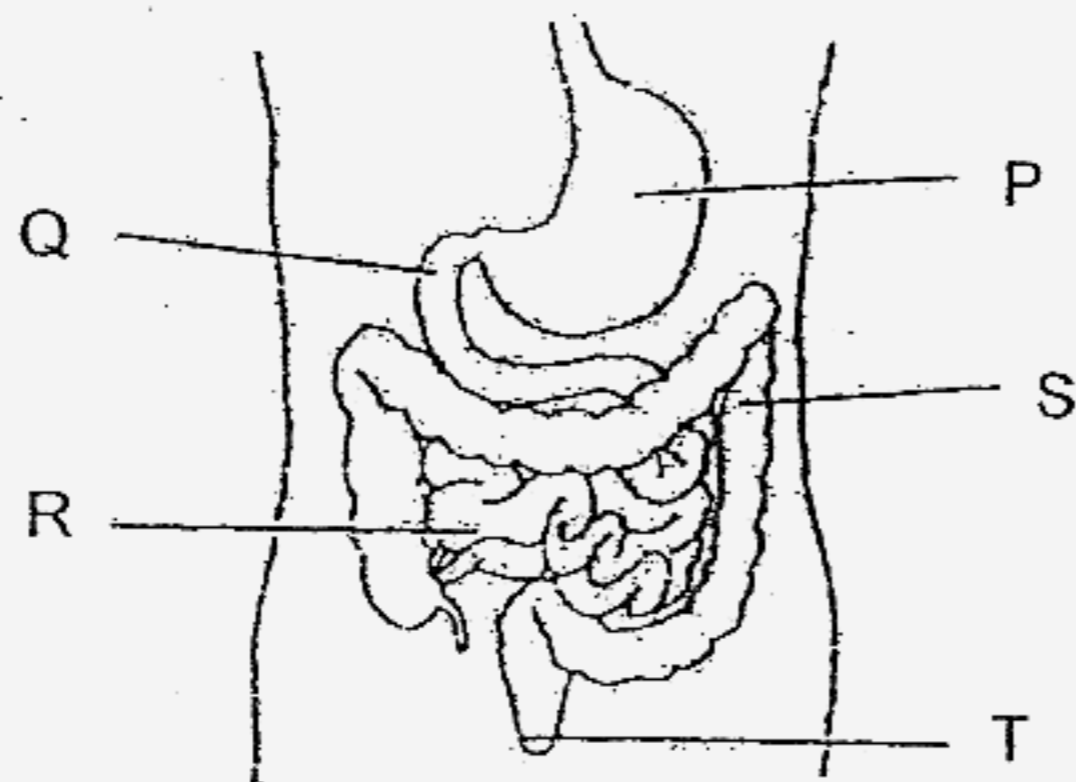
16. Study the classification table below carefully. Which one of the following correctly lists the parts of the human systems shown below?



	A	B	C
(1)	kidneys	windpipe	gullet
(2)	liver	nose	heart
(3)	ribs	small intestine	nose
(4)	heart	stomach	lungs

()

17. The diagram below shows part of the human digestive system.

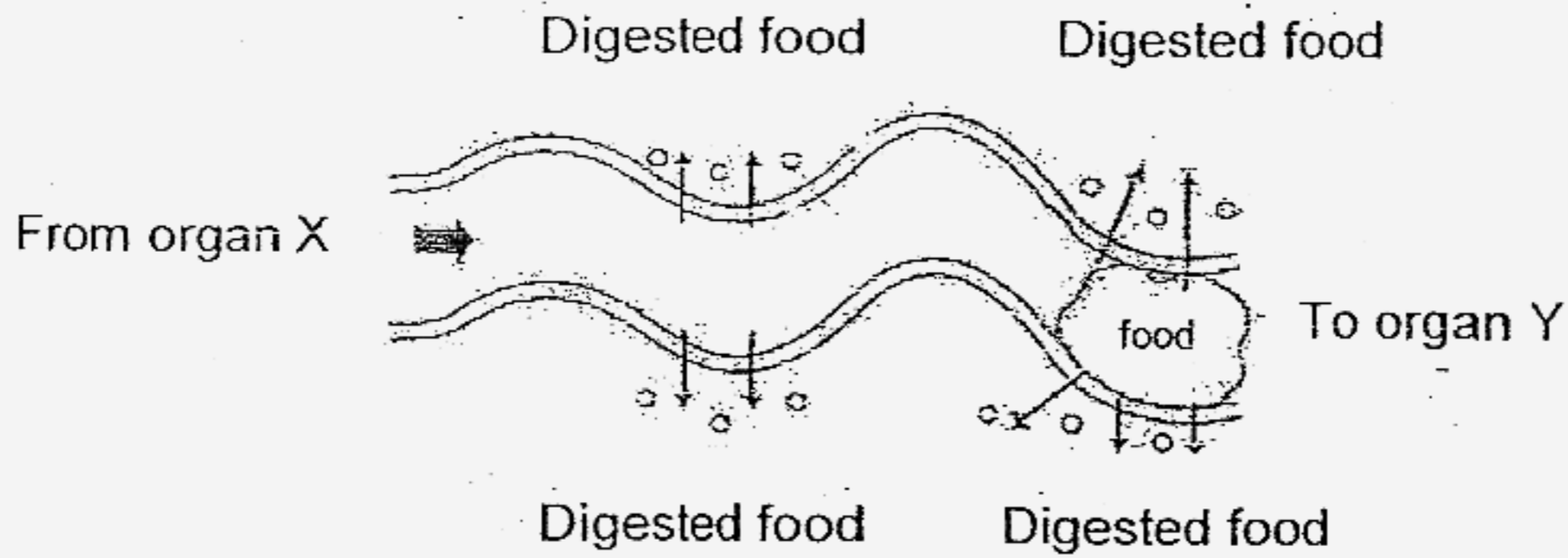


Based on the diagram above, which statement is incorrect?

- 1) Digestion begins at Part P.
- 2) Water is absorbed in Part S.
- 3) Human waste leaves the body through Part T.
- 4) Part R is the longest part of the digestive system.

()

18. The diagram below shows part of the human digestive system.

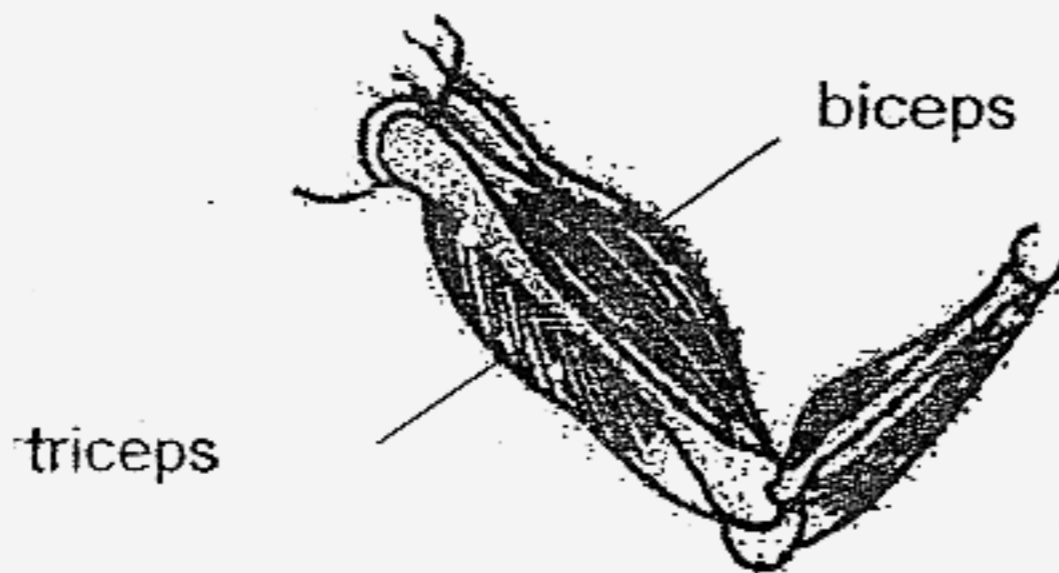


Identify organs X and Y.

	X	Y
(1)	Mouth	Gullet
(2)	Gullet	Small intestine
(3)	Stomach	Large intestine
(4)	Small intestine	Anus

()

19. Look at the picture below and complete the following statement.



For the arm to move to a relaxed position, the biceps must

_____ and the triceps must _____.

	Biceps	Triceps
(1)	Contract	Relax
(2)	Contract	No change
(3)	Relax	Contract
(4)	Relax	No change

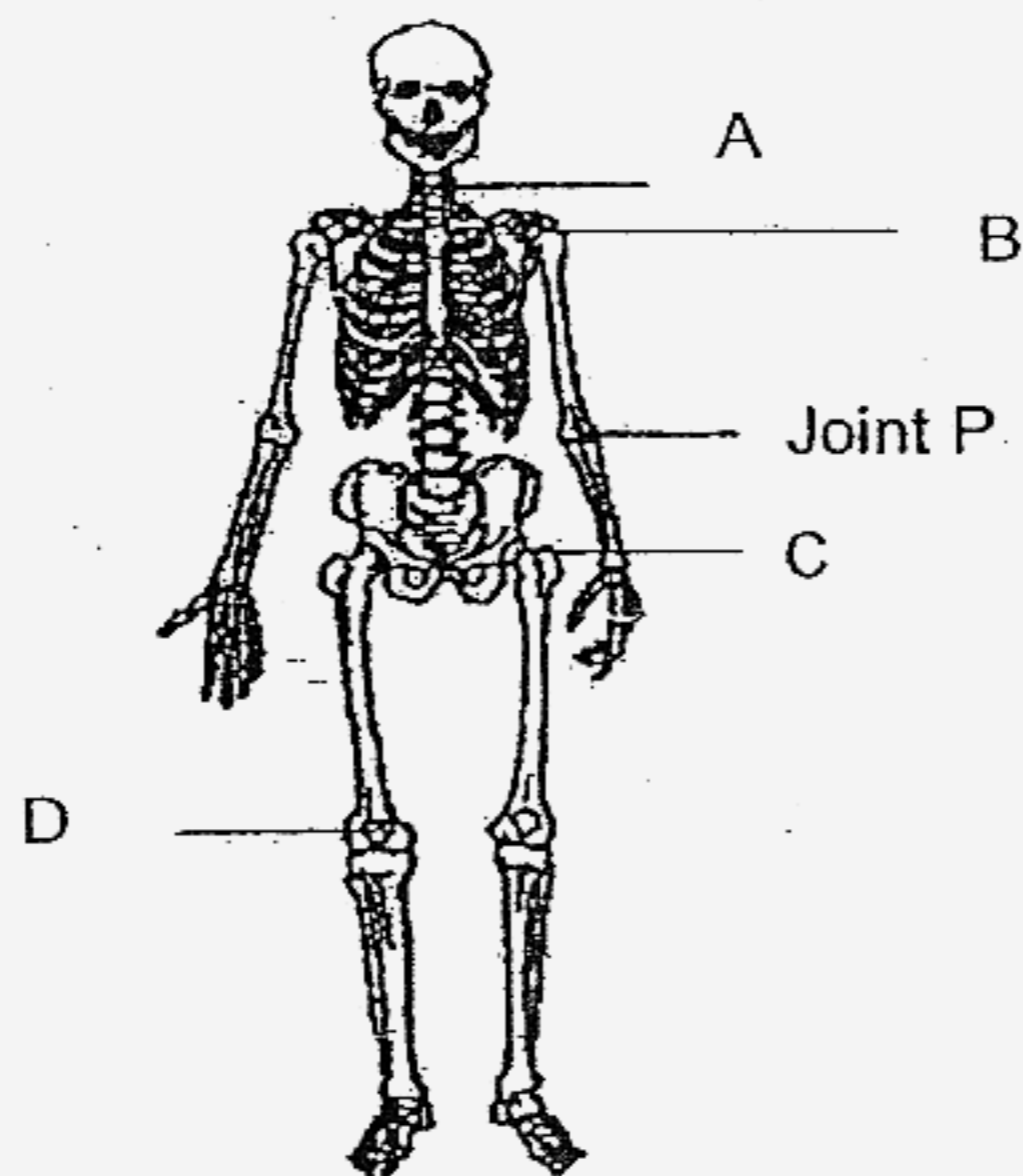
()

20. Which of the actions below does not involve the use of a joint ?

- (1) Jogging
- (2) Throwing a ball
- (3) Blinking your eyes
- (4) Turning your head to the side

()

21. Study the diagram of the human skeleton carefully.



Which one of the following labelled joints moves in the same way as joint P?

- (1) A
- (2) B
- (3) C
- (4) D

()

22. Which of the following are the properties of a mirror ?

- A Hard
- B Smooth
- C Transparent
- D Waterproof

- 1) A and B only
- 2) C and D only
- 3) A, B and D only
- 4) A, B, C and D

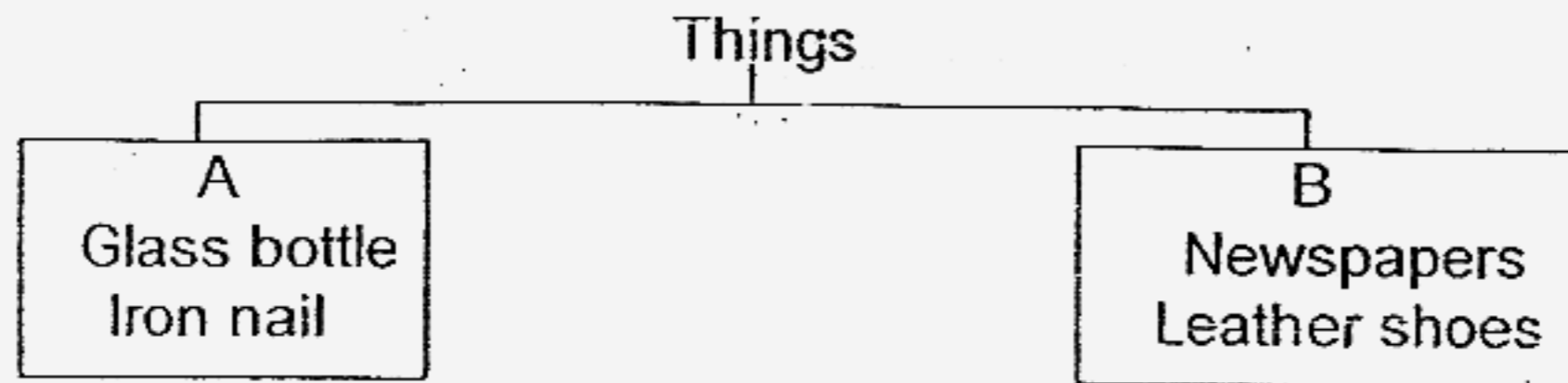
()

23. Which one of the following objects is made of only one material?

- (1) Pencil
- (2) Bicycle
- (3) Computer
- (4) Ice-cream stick

()

24. The following things are grouped according to whether they are made from materials that come from living or non-living things.



Which of the following is the most suitable heading for A and B?

A	B
1) Never alive	Once alive
2) Soft	Hard
3) Waterproof	Non waterproof
4) Once alive	Never alive

()

25. Which is the least important property to be considered when buying a towel?

- (1) The softness of the towel
- (2) The flexibility of the towel
- (3) The ability to absorb water
- (4) The cartoon print on the towel

()

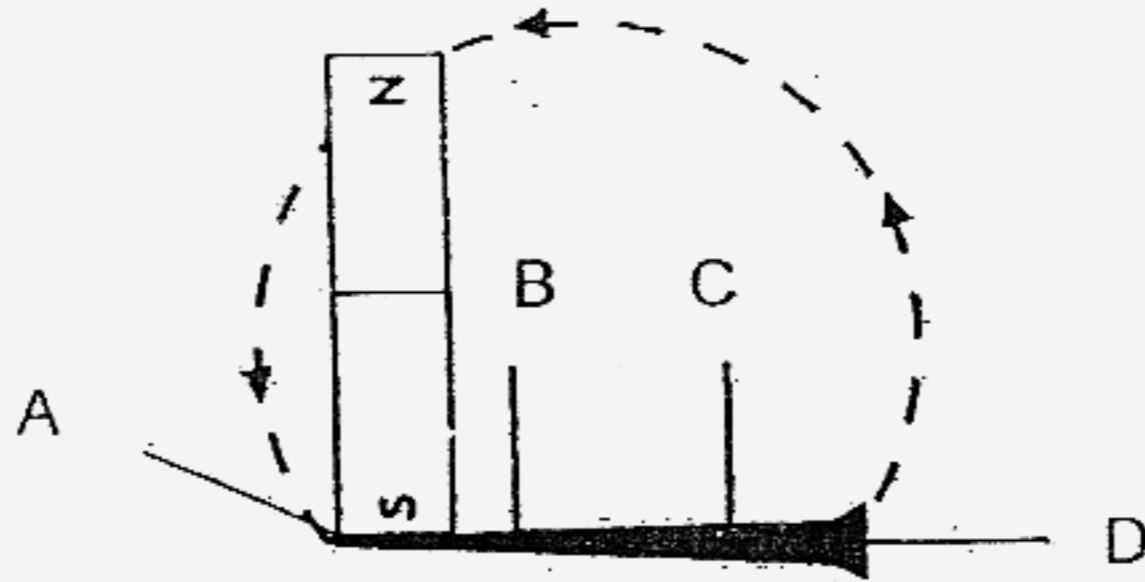
26. Sally wants to leave a note for her mother. With a piece of magnet, she can stick the note onto the _____.

- A mirror
- wooden door
- aluminium grille
- door of the refrigerator

- 1) C only
- 2) D only
- 3) C and D only
- 4) A, B, C and D

()

27. A nail was stroked several times as shown below until it became a temporary magnet.

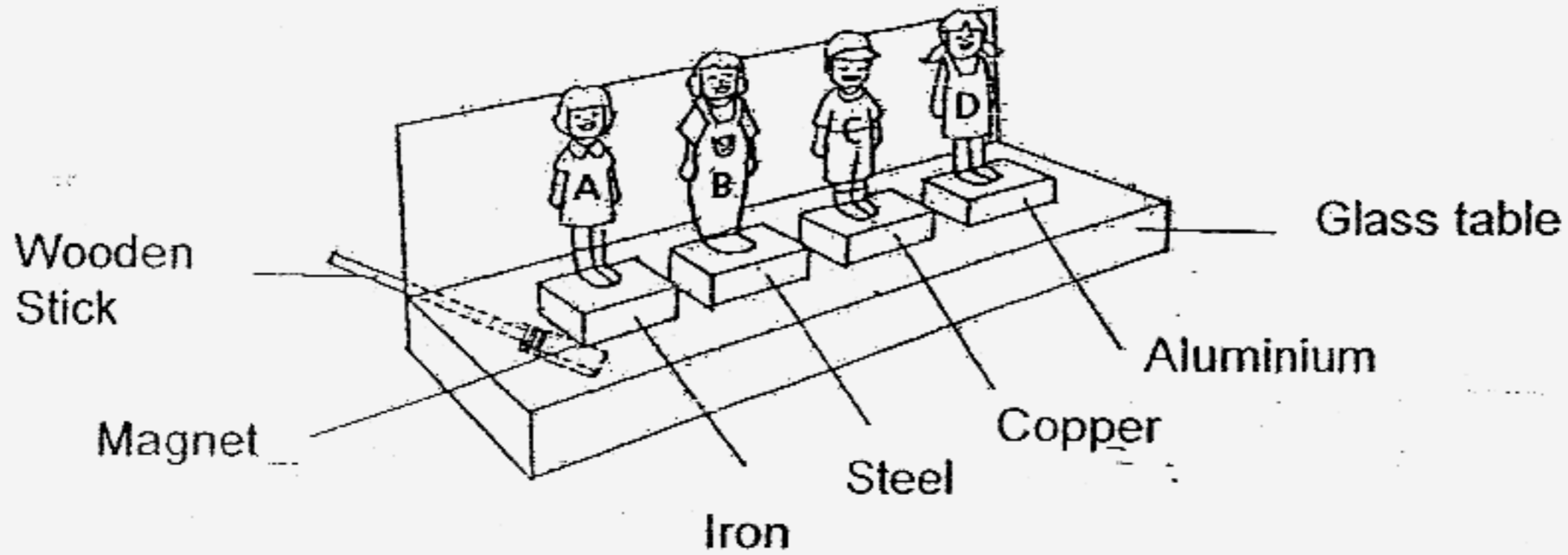


Which end would be the north-seeking pole?

- 1) A 2) B
3) C 4) D

()

28. Irene attached a paper doll on each of the four pieces of metals ; iron, steel, copper and aluminium. Then she put the four dolls on the glass table as shown below.

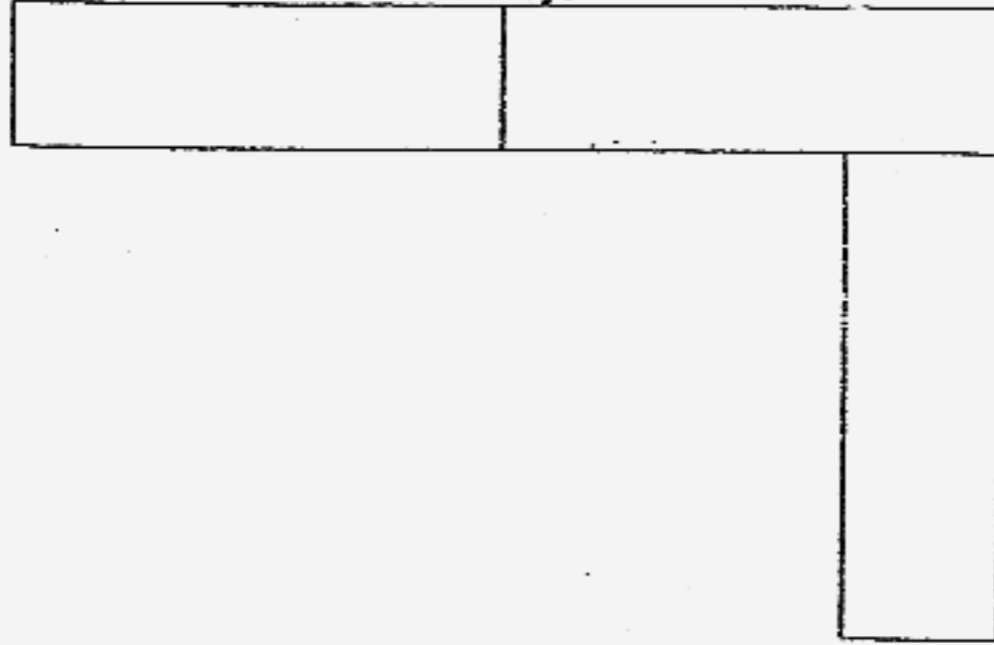


She used a string to tie a strong magnet to one end of a wooden stick. Then she placed the magnetic end of the stick under the table to try and move the dolls. Which dolls could Irene move?

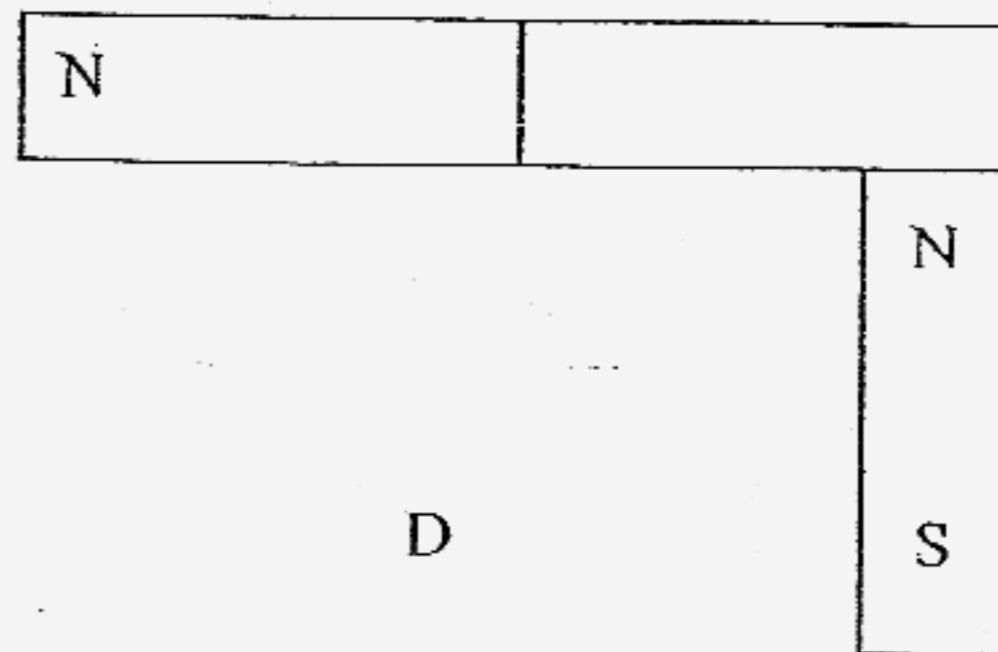
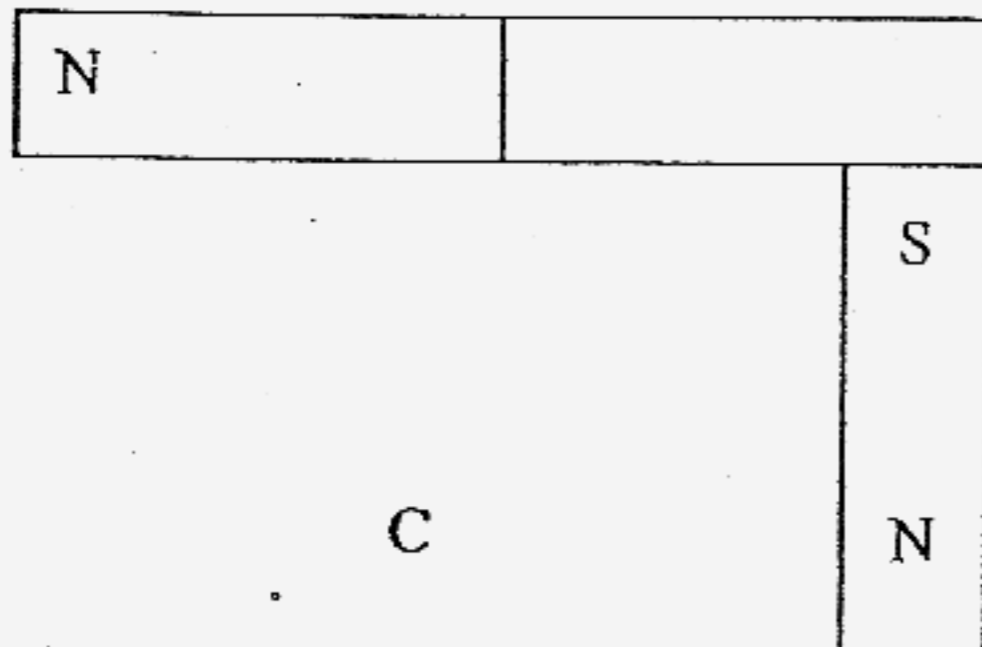
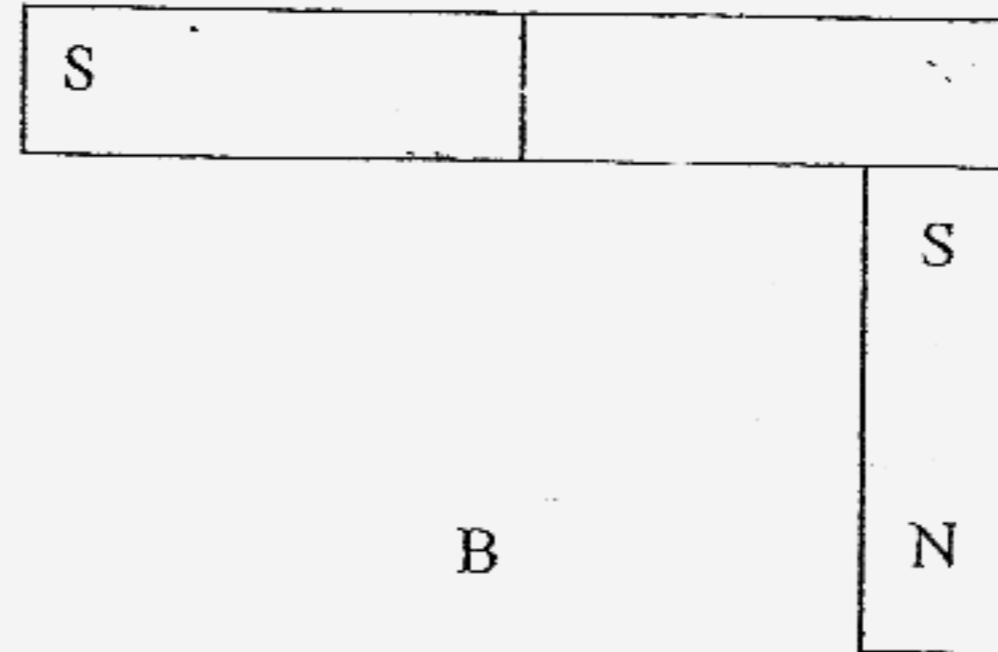
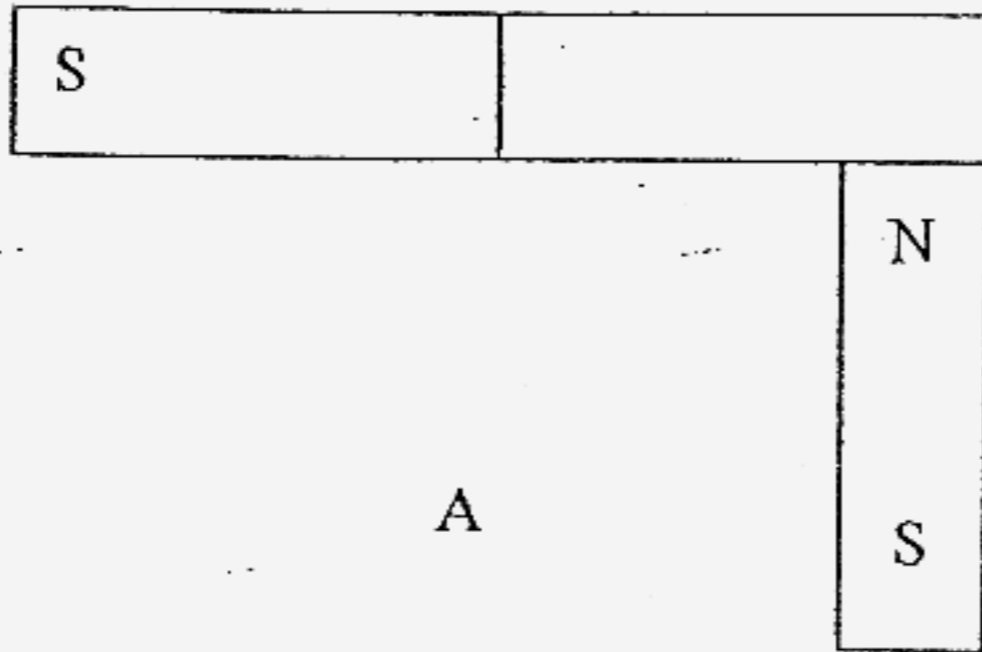
- (1) A and B only (2) C and D only
(3) A, B and C only (4) A, B, C and D

()

29. Three magnets are joined together as shown in the picture below.



Which of the following diagrams show the correct arrangement of their poles?

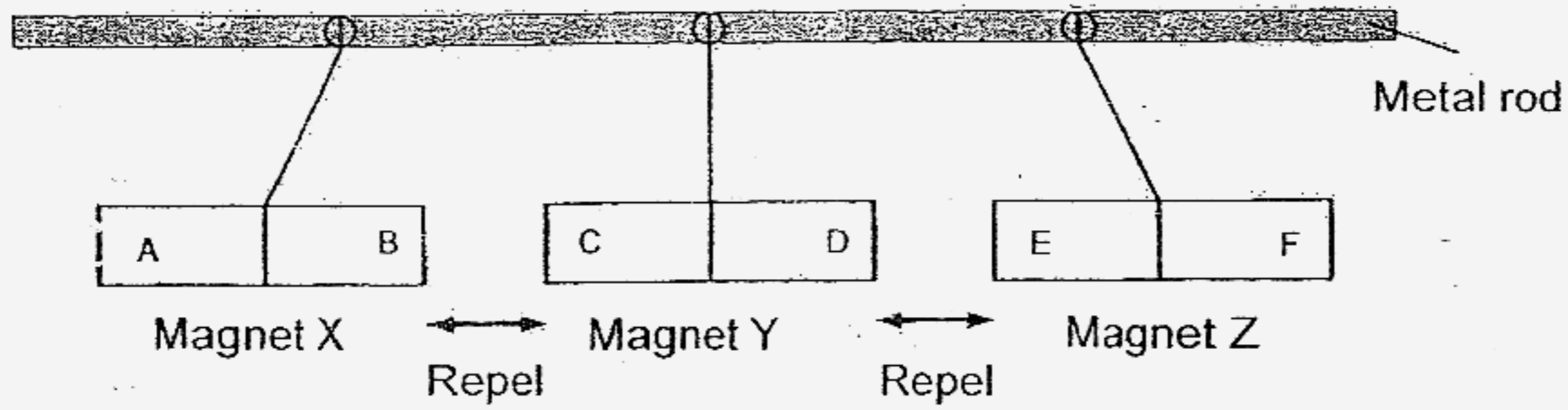


- 1) A and C only
- 3) A and D only

- 2) B and C only
- 4) B and D only

()

30. 3 similar bar magnets, X, Y and Z, were hung on a metal rod next to one another. The diagram below shows what happened to the magnets. The letters A, B, C, D, E and F represent the poles of magnets X, Y and Z.



Which set in the table below shows the possible arrangement of the poles of Magnets X and Z ?

	Magnet X	Magnet Z
A		
B		
C		
D		

- 1) A and B only 2) B and D only
 3) A and C only 4) C and D only ()

End of section A



**CATHOLIC HIGH SCHOOL
PRIMARY THREE
END-OF-YEAR EXAMINATION, 2007**

SCIENCE

Name: _____ (

Class : Primary 3 _____

Date : 29 October 2007

BOOKLET B

16 Questions
40 Marks

Total Time for Booklets A & B: 1 hour 30 minutes

Instructions to Candidates

Follow all instructions carefully.
Answer all questions.

Parent's Signature: _____

Date: _____

Score	
Section A	60
Section B	40
Total	100

Section B : Open-Ended Questions (40 marks)

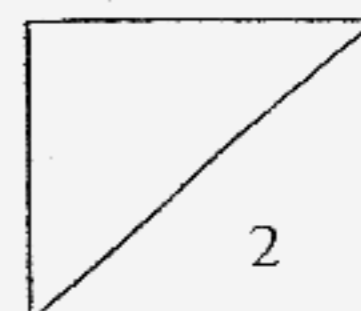
Read the following questions carefully and write your answers in the space provided. The maximum marks that can be awarded is shown at the end of each question or part-question.

31. The figure below shows a mimosa plant.

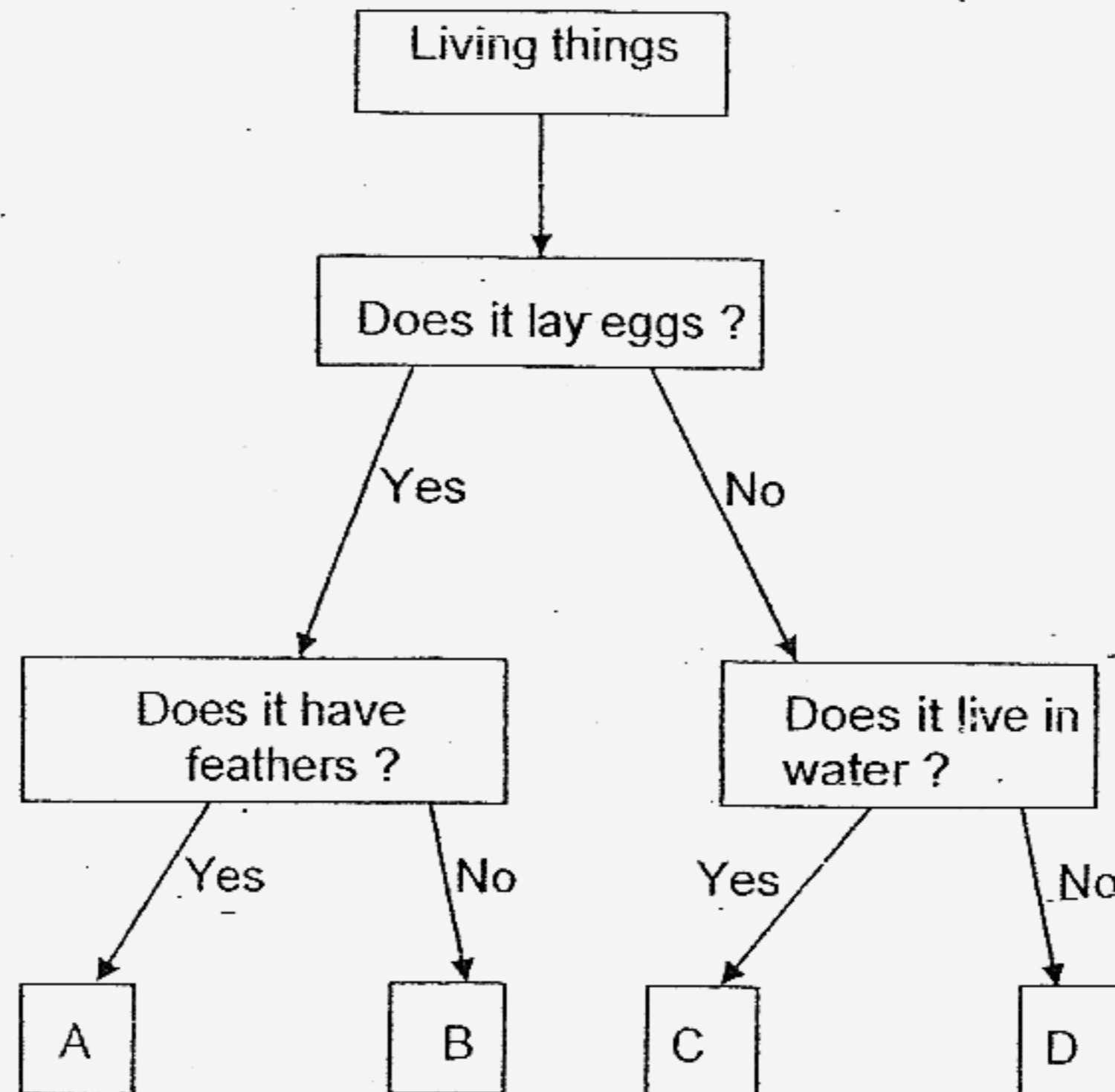


a) What will happen to the mimosa plant when you touch its leaves? [1]

b) This tells us that plants are able to _____ to changes around them. [1]



32. Study the flow chart below.



a) Based on the flow chart above, match the following animals to the correct letter. [2]

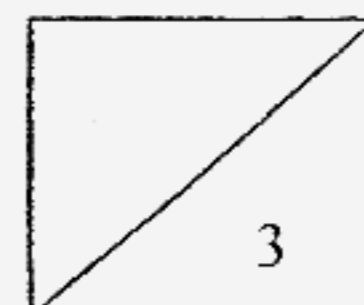
i) Turtle _____

ii) Parrot _____

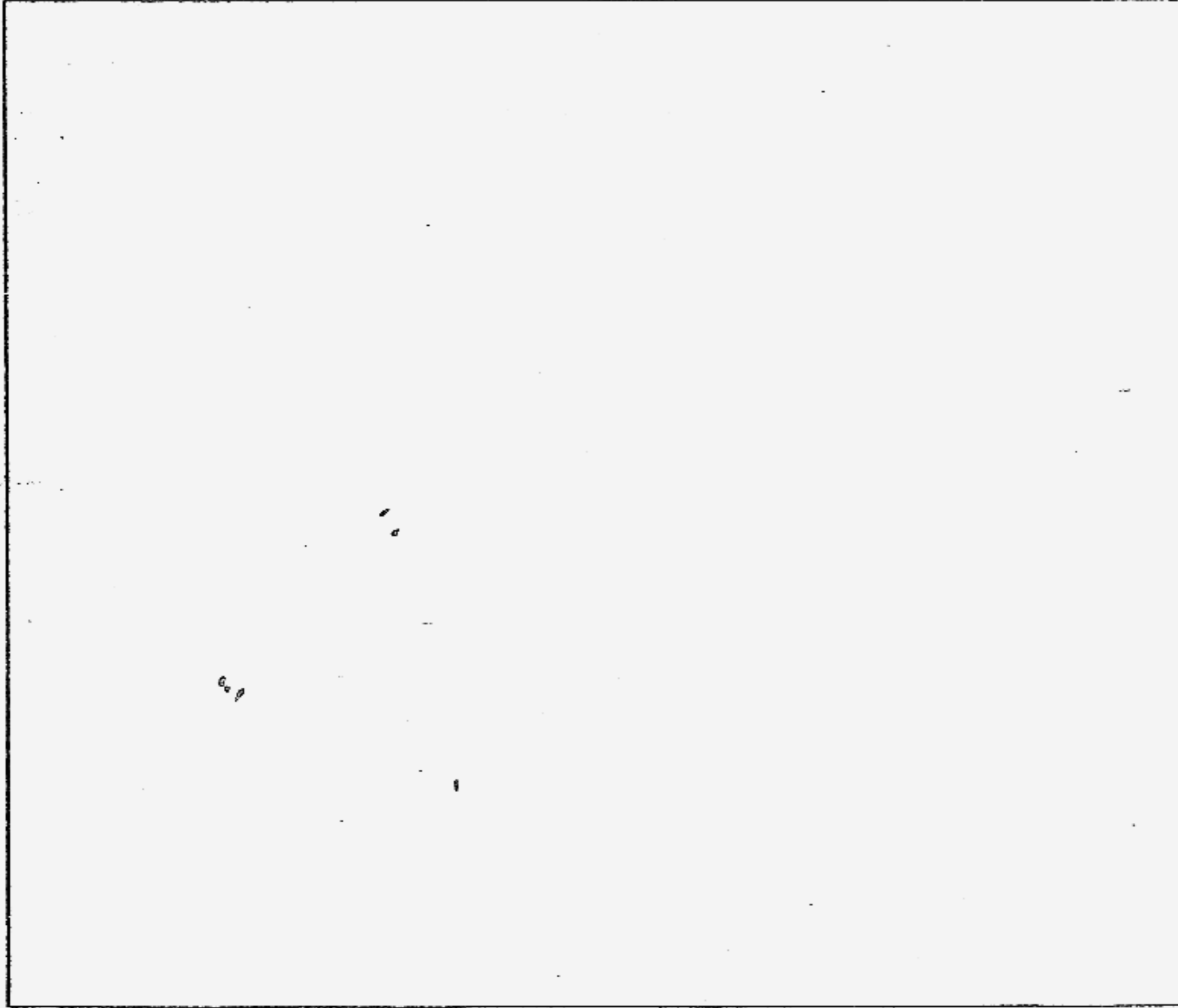
iii) Giraffe _____

iv) Guppy _____

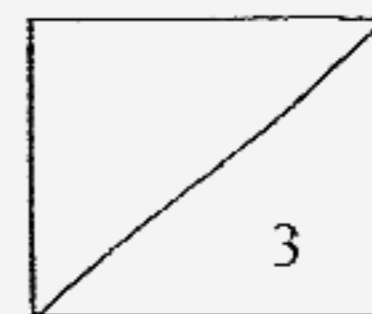
b) Name another animal which can be grouped in C. [1]



33. a) In the box below, draw a simple diagram to show the life cycle of a garlic bulb. [2]



- b) Name another plant that has the same life cycle as the above. [1]



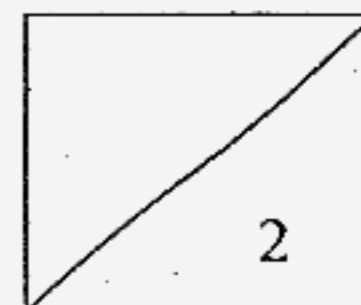
34. Some characteristics from the parents are passed on to their children. When Jun Wei shows his family photo to his teacher and classmates, they make a comment below.

Jun Wei has his father's eyes and mother's hair.

Study the characteristics of Jun Wei's parents and write down the characteristics that are passed on to him.

[2]

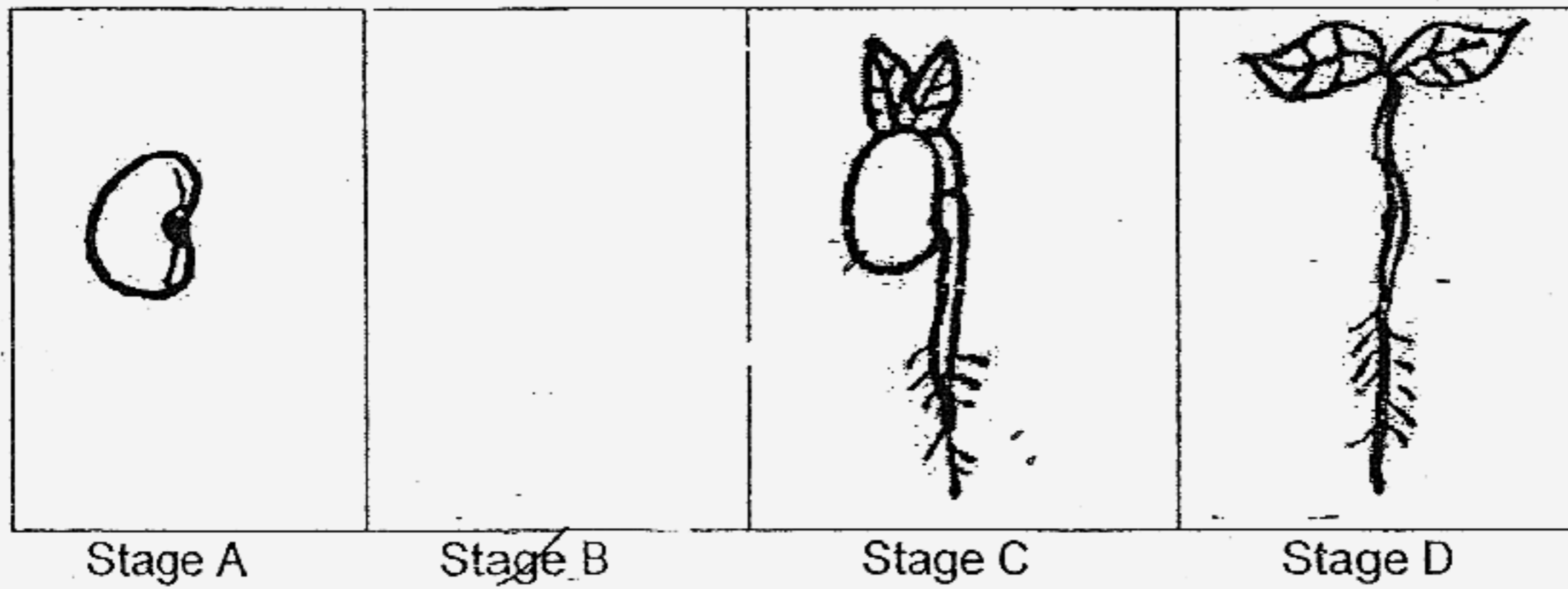
	Father	Mother	Jun Wei
Eyes	brown	blue	a)
Hair	straight	curly	b)



35. The pictures below show the different stages of the growth of a bean seed.

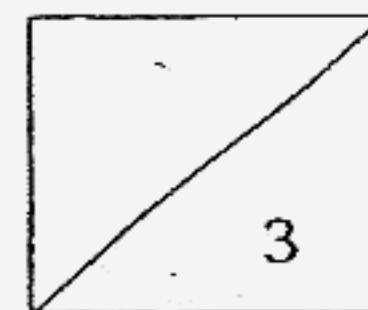
a) Draw the missing stage in the box provided.

[2]

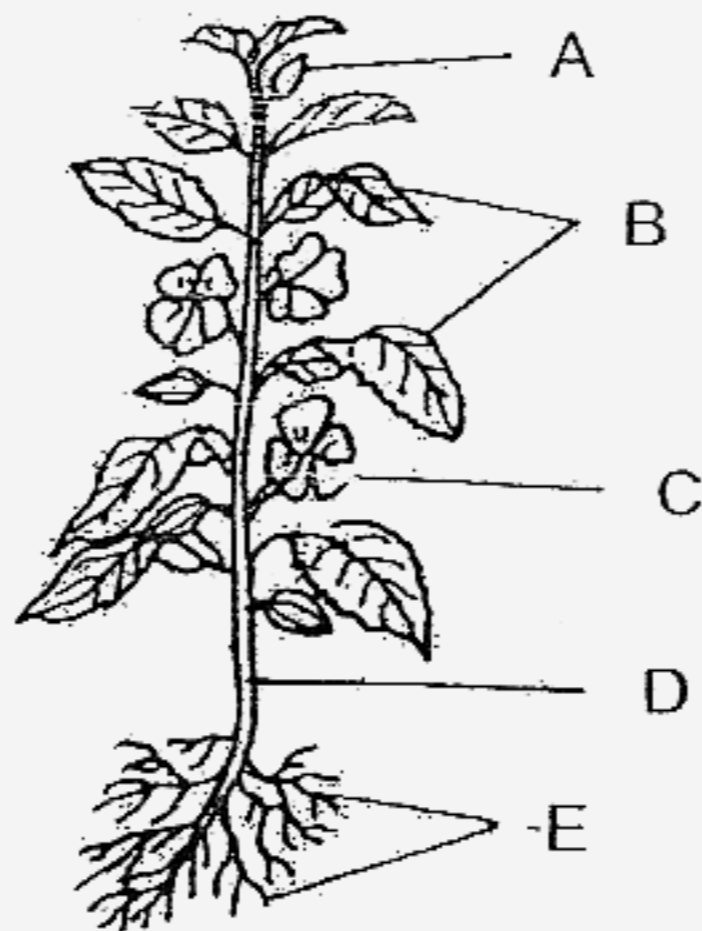


(b) At which stage does it need sunlight ?

[1]



36. Look at the picture of the plant below.



(a) Part _____ holds the plant firmly to the ground. [½]

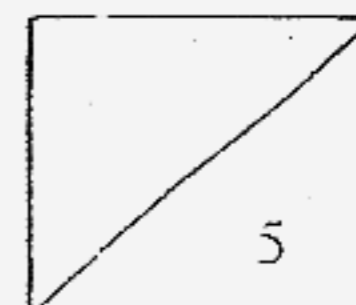
(b) Part _____ makes food for the plant. [½]

(c) What would happen if parts A and C are missing from the plant? [1]

(d) What does part E absorb? [1]

37. Write T for true or F for false for the statements below. [2]

	Statements	T or F
a	Bones can move without muscles.	
b	Muscles can be found in organs such as our heart and gullet.	
c	Digestive juices are found in the mouth, stomach and small intestine.	
d	Our bones can move at the joints but they cannot move by themselves.	

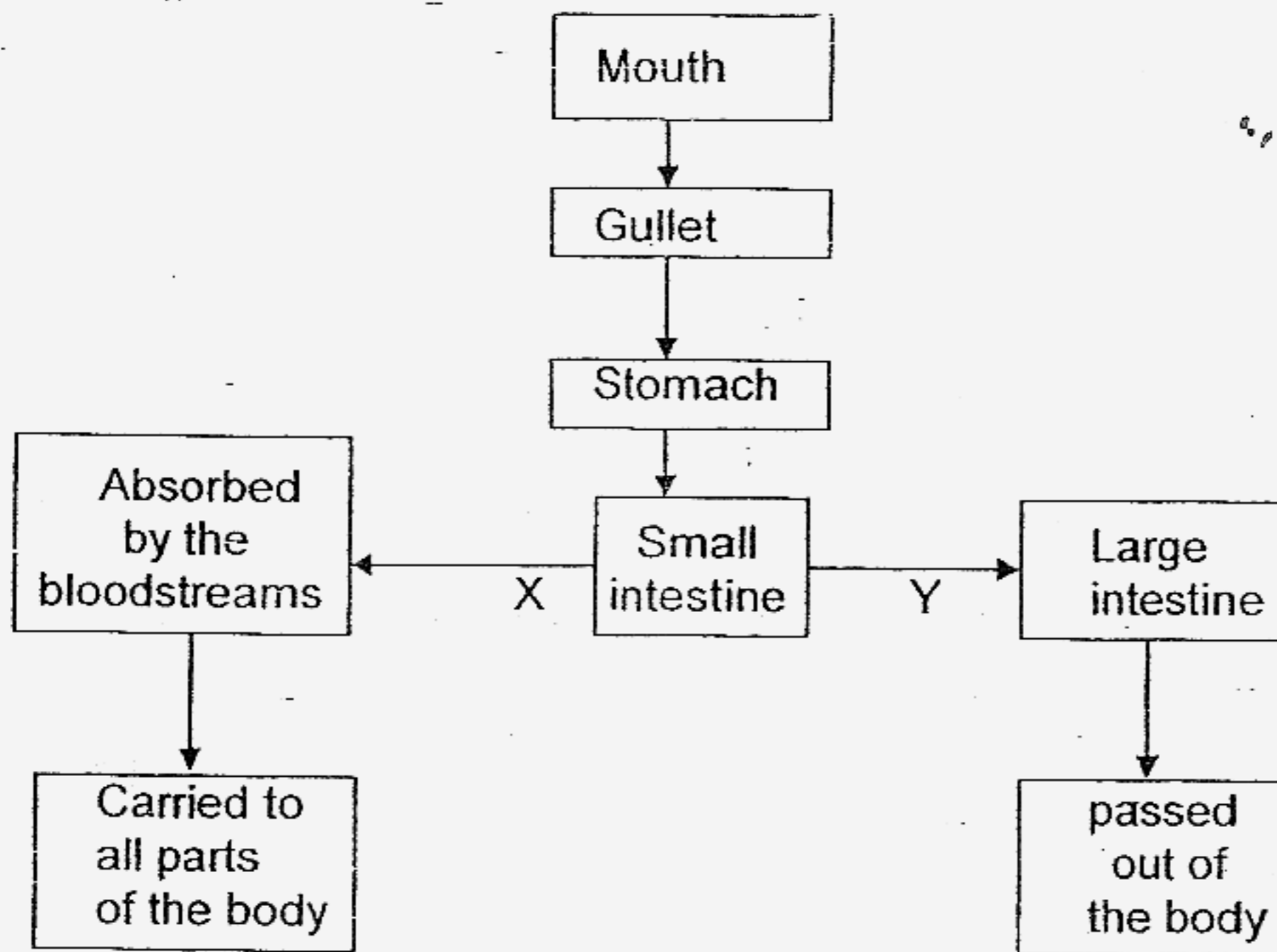


38. Our teeth help to break down food into smaller pieces in the digestive process.

a) Why is it important for us to chew our food and break them into smaller pieces before swallowing? [1]

b) A liquid in your mouth helps to digest the food further and makes it soft. What is this liquid called? [1]

39. Study the flow chart below carefully.

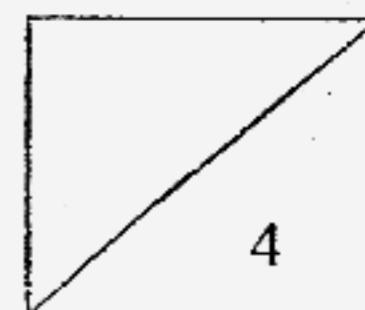


What do X and Y represent ?

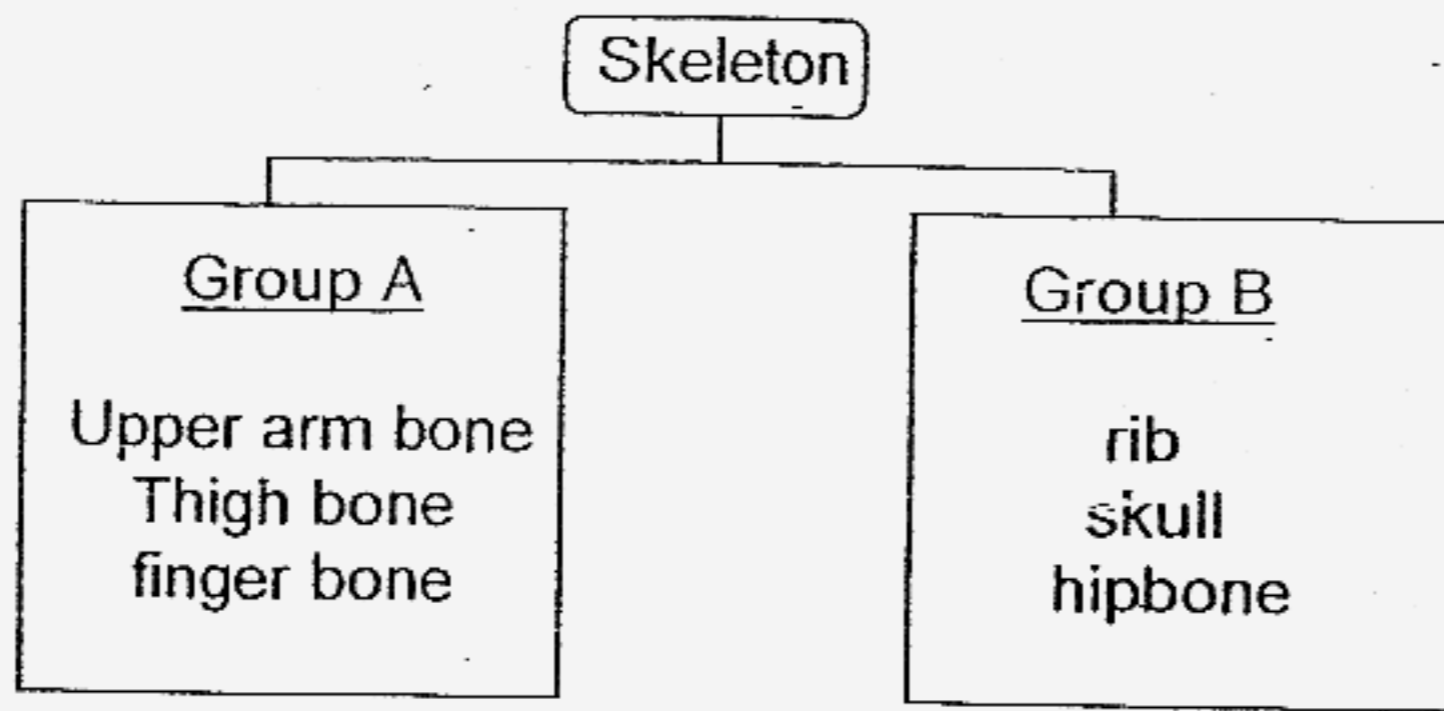
[2]

a) X _____ food

b) Y _____ food



40. Some bones in the skeleton are put into two groups as shown below.



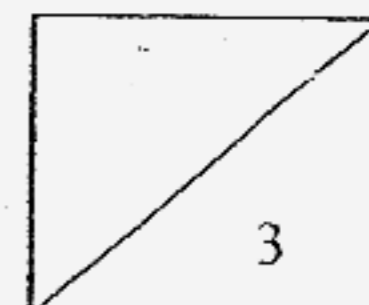
(a) Give suitable headings for Groups A and B [2]

Group A _____

Group B _____

(b) For each of the following joints, give one example of where it can be found in your body. [1]

	Joint	Where it can be found
(i)	Hinge	
(ii)	Ball and Socket	



41. Joel wants to wrap a hamper for his teacher. He wants the contents to be seen without the teacher having to unwrap it. He is given the following items to choose from.

Cardboard
Newspaper
Tracing paper
Aluminium foil
Clear plastic sheet

- a) Which is the most suitable item he should use? [1]
-

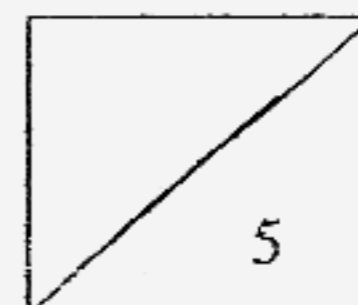
- b) Give a reason for your choice in (a). [1]
-

42. Study the characteristics of Materials A, B, C and D in the table below.

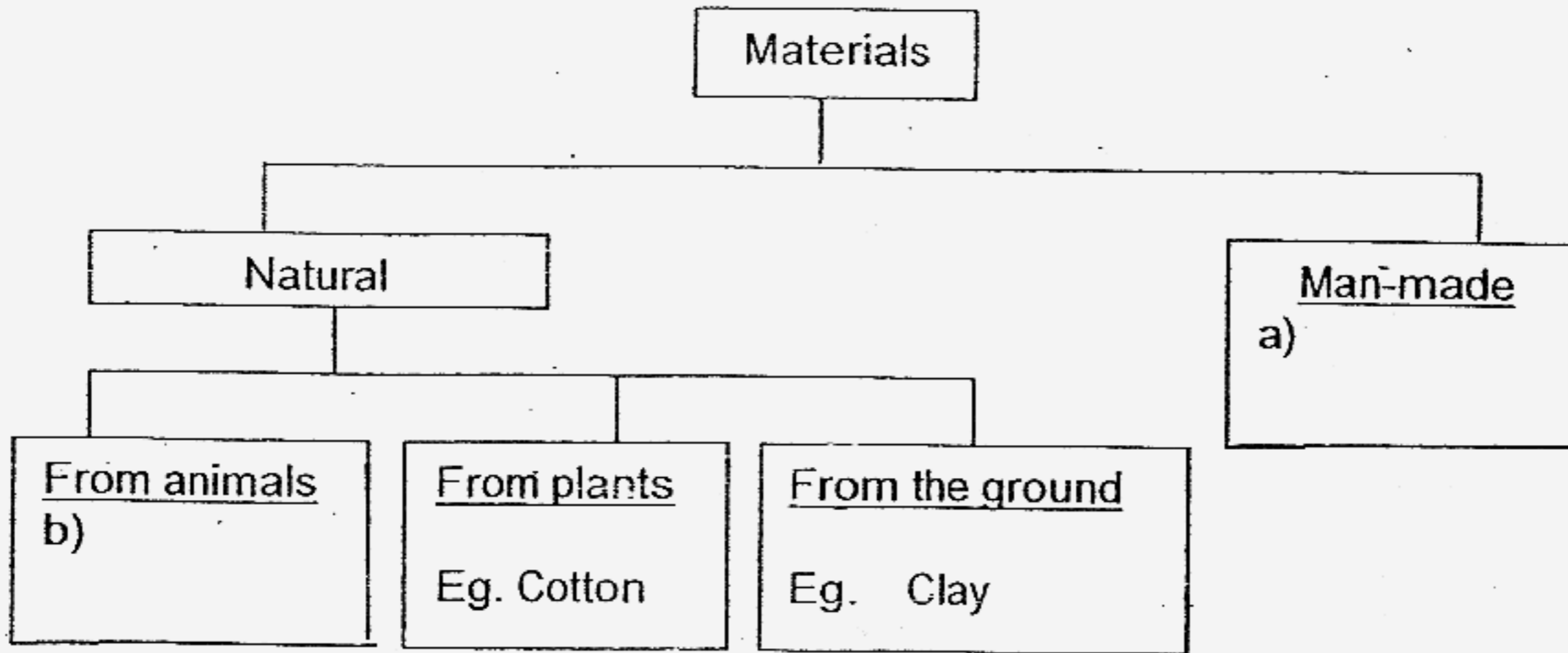
Materials	Hard		Can float		Breaks when dropped	
	Yes	No	Yes	No	Yes	No
A	√			√	√	
B	√		√		√	
C	√		√			√
D		√	√		√	

- a) Based on the table above, describe material C. [2]
-

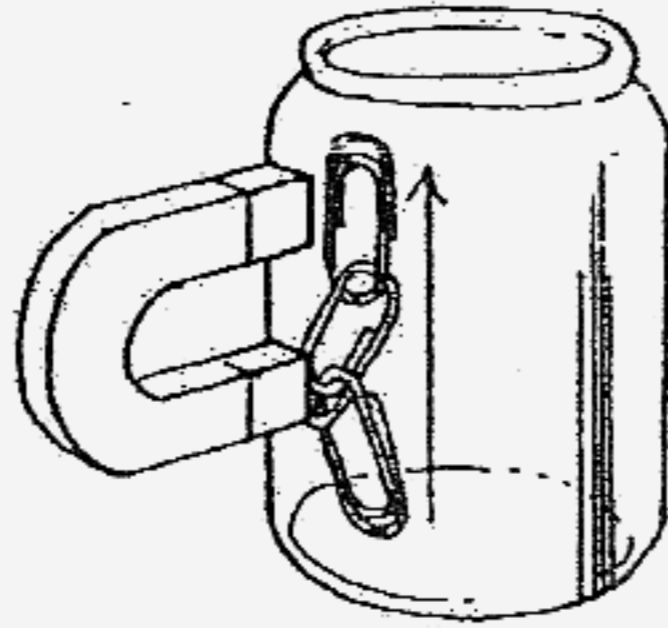
- b) Give an example of material C. [1]
-



43. Complete the classification chart below with suitable words. - [2]

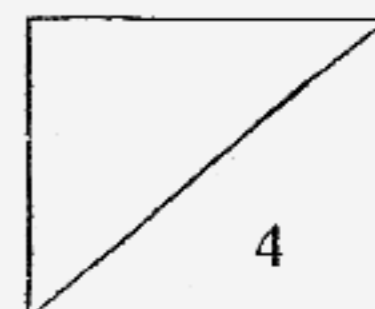


44. Shaun put some paperclips inside a glass jar, an aluminium can and an iron can. Then he placed a magnet on the outside of each container to try to slide the paperclips up the container as shown below. He recorded the results in the table below.



Types of container	Can he slide the paper clips up?
Glass jar	Yes
Iron can	No
Aluminium can	Yes

What conclusion can he form based on the results of the experiment? [2]



45. Susan magnetized several iron nails using the 'Stroking' method. The number of strokes applied to the nails are recorded in the table below.

Nail	Number of strokes
P	25
Q	50
R	75
S	100

- a) Which iron nail is the strongest? Why? [2]

- b) Write down one way to demagnetize the iron nails. [1]

46. Ming Hua had three bars; a magnet, an iron bar and a copper bar. He conducted an experiment and recorded the following findings.

Bar B attracted Bar A
 Bar B was repelled by a magnet
 Bar B showed no reaction to Bar C

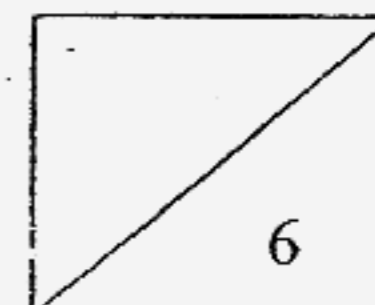
- Identify the magnet, the iron bar and the copper bar. [3]

Bar A _____

Bar B _____

Bar C _____

End of paper



Catholic High Primary School
Primary 3 Science SA2 Exams (2007)

Answer Keys

SECTION A : (60 MARKS)

Qn no.	Ans
1	4
2	1
3	2
4	3
5	3
6	1
7	3
8	2
9	4
10	3

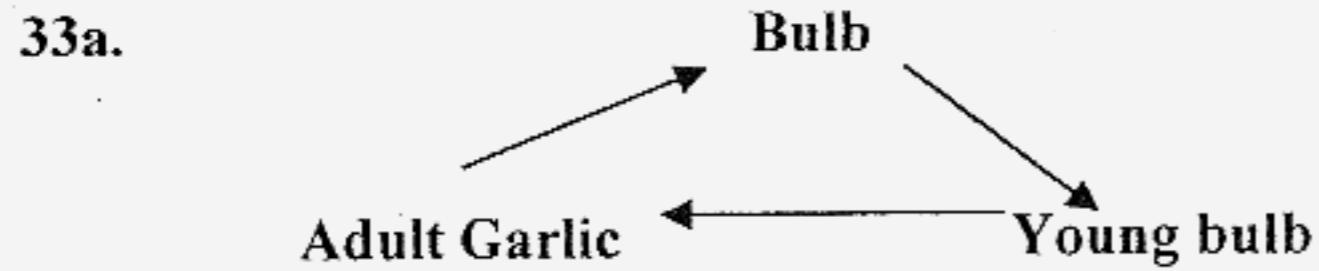
Qn no.	Ans
11	3
12	3
13	2
14	3
15	2
16	4
17	1
18	3
19	3
20	3

Qn no.	Ans
21	4
22	3
23	4
24	1
25	4
26	2
27	4
28	1
29	4
30	3

SECTION B (40 MARKS)

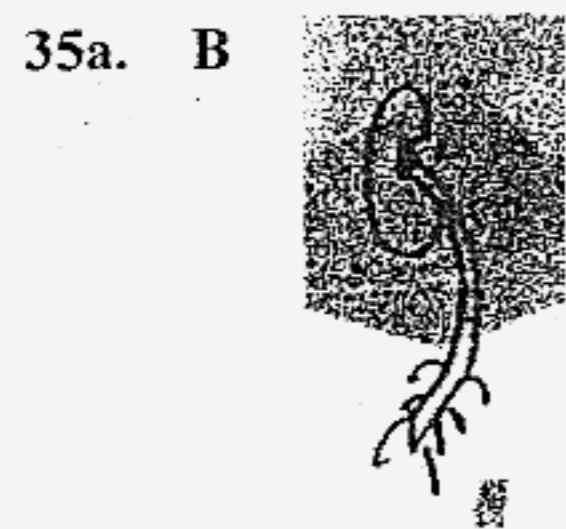
31a. Its leaves will close when I couth the leaves.
 31b. respond.

32a. B, A, D, C
 32b. Shark



33b. It is the onion.

34a. brown
 34b. curly



35b. Stage D

- 36a. E
 36b. B
 36c. It will not reproduce Part E dissolved mineral and absorb water from the soil.
 36d. Part E absorb mineral and water from the soil.
- 37a. F
 37b. T
 37c. T
 37d. T
- 38a. It is important to chew our food before swallowing to prevent choking.
 38b. The liquid is called saliva.
- 39a. Digested
 39b. Undigested
- 40a. A : Straight bone. B : Curved bone.
 40b. (i) Elbow.
 (ii) Shoulder.
- 41a. The most suitable item is clear plastic sheet.
 41b. Clear plastic she is transparent.
- 42a. Material C is hard, float in water, and it does not break when float.
 42b. It can be float.
- 43a. Nylon
 43b. Silk
44. Magnetism can pass through glass and aluminum but not iron.
- 45a. Nail S is the strongest as she stroke nails many times.
 45b. She could heat it over a fire.
- 46a. A : iron
 B : magnet
 C : copper.