

MAHA BODHI SCHOOL
2005 CONTINUAL ASSESSMENT 2
SCIENCE

NAME: _____ ()

DATE: 25 AUGUST 2005

CLASS: PRIMARY 3 ()

DURATION: 1 HR (PART I & II)

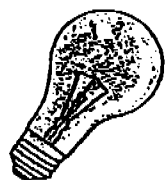
Part I: (24 marks)

For each question from 1 to 12, four options are given. One of them is the correct answer.

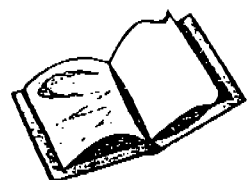
Make your choice (1, 2, 3 or 4). Shade the correct answer (1, 2, 3 or 4) on the Optical Answer Sheet (OAS).

1. Which one of the following objects is made from materials that were once alive?

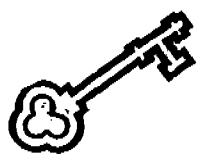
(1)



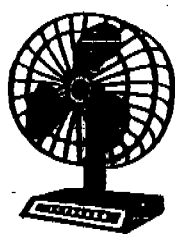
(2)



(3)



(4)



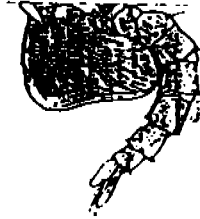
()

2. Look at the diagrams below.

(A)



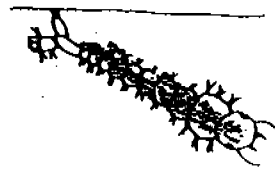
(B)



(C)



(D)



Which of the following animals are in the larvae stage?

- (1) A and D only
- (2) A and B only
- (3) C and D only
- (4) B and C only

()

3. The following diagrams show the different stages A, B, C and D of the life cycle of a plant.



A



B



C



D

What is the correct order of its life cycle?

- (1) B → C → A → D
- (2) C → A → B → D
- (3) A → C → D → B
- (4) D → A → C → B

()

4. Which one of the following statements states correctly the similarity between a mosquito and a butterfly?

- (1) Both have three stages in their life cycle.
- (2) Both spend a part of their life cycle in water.
- (3) Both have young that look like their adult.
- (4) Both go through the pupae stage.

()

5. Cooking utensils are usually made of aluminium because _____

- (A) it is light
- (B) it does not rust easily
- (C) it allows food to be cooked quickly

- (1) A and B only
- (2) A and C only
- (3) B and C only
- (4) A, B and C

()

6. Sam's finger is pricked by a needle. Which one of the following sense organs tells him that his finger is hurt?

(1)



Nose

(2)



Ears

(3)



Eyes

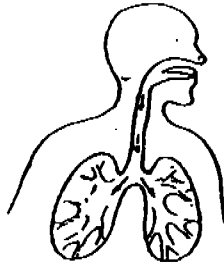
(4)



Skin

()

7. The diagram below shows a system in the human body.



What is the function of this system?

- (1) It carries messages from one part of the body to another.
- (2) It carries food to various parts of the body.
- (3) It digests the food we eat into simple substances.
- (4) It takes in oxygen and removes carbon dioxide.

()

8. The table below shows different types of food which are grouped according to their tastes.

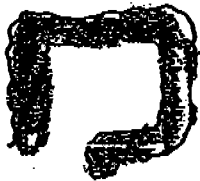
Group A	Group B	Group C
Lemon	Honey	Soya sauce
Vinegar	Jam	Cheese crackers

Which one of the following food items can be placed in Group B?

- (1) Chilli
- (2) Lime
- (3) Raisin
- (4) Potato chips

()

9. Which one of the following organs in the body is not shown below?



- (1) Stomach
- (2) Heart
- (3) Lungs
- (4) Small intestine

()

10. The following diagrams show the roots of some plants. Which one of the following plants has roots that will hold it most firmly to the ground?

(1)



(2)



(3)



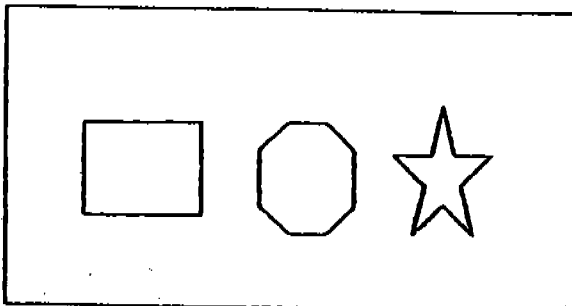
(4)



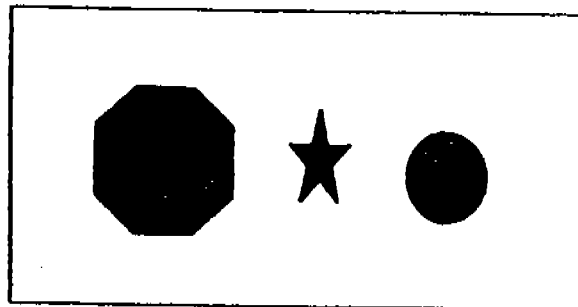
()

11. Jenny groups some objects into two groups, 'Non-Sokas' and 'Sokas', as shown below.

Non-Sokas



Sokas



Which one of the following statements about Sokas is true?

- (1) All Sokas have the same size.
- (2) All Sokas have the same shape.
- (3) All Sokas have the same colour.
- (4) All Sokas have the same colour and shape.

()

534

12. 4 children suggested what will happen to the food in our stomach. Who has made a mistake?

(1)

Food is completely digested.



(2)

The food is broken down into smaller pieces.



(3)

Food becomes softer.



(4)

Digestive juices are produced to digest the food.



()

END OF PART I

MAHA BODHI SCHOOL
2005 CONTINUAL ASSESSMENT 2
SCIENCE

Written Paper	80
Practical Test	10
Junior Science Card	10
Total	100

NAME: _____ ()

CLASS: PRIMARY 3 ()

DATE: 25 AUGUST 2005

DURATION : 1 HR (PART I & II)

PARENT'S SIGNATURE :

Part II: (16 marks)

Write your answers to questions 13 to 20 in this script.

13. State the material that is used to make the following objects.

- (i) Nail : _____
- (ii) Disposable chopsticks : _____
- (iii) Raincoat : _____
- (iv) Balloon : _____

[2]

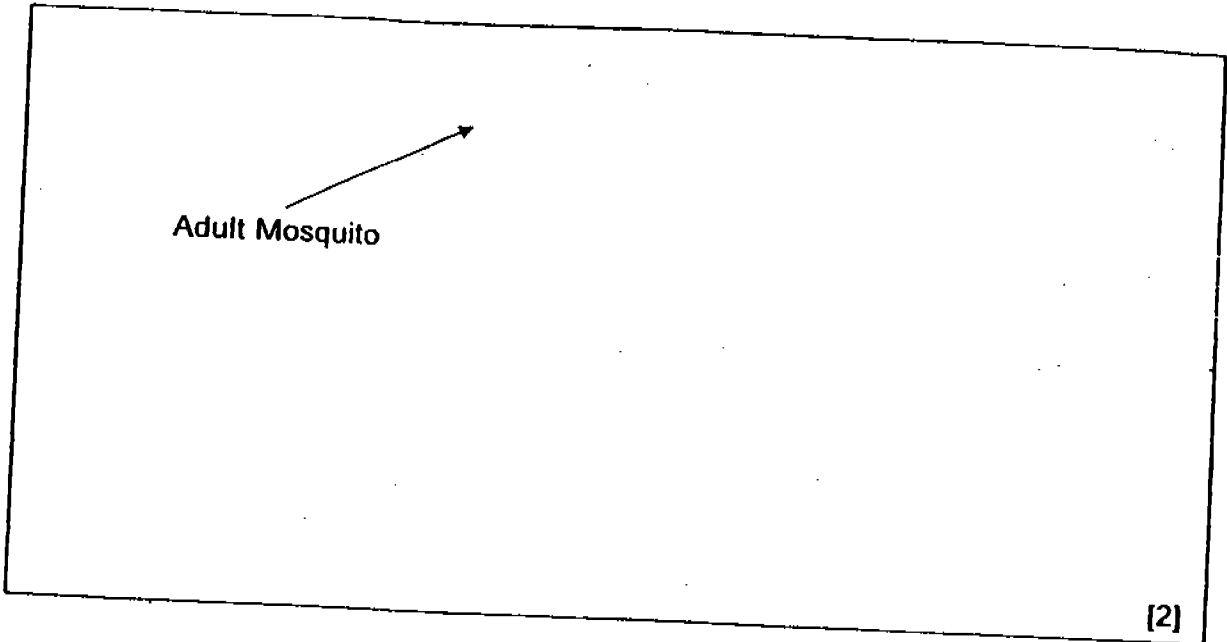
14. Why do food-sellers at hawker centres prefer using bowls and plates which are made of plastic instead of those that are made of glass or ceramic? State two reasons.

- (i) _____
- (ii) _____

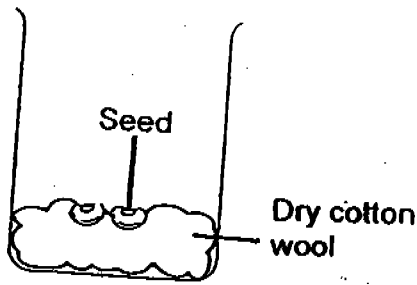
[2]

736

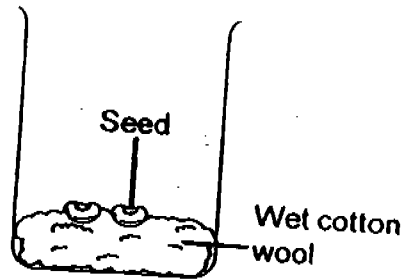
15. Draw the life-cycle of the mosquito in the space below using words and arrows.



16. Derek prepares two set-ups, A and B, using some cotton wool and seeds, as shown below. He puts them near the windows in his room.



Set-up A



Set-up B

After a few days, he observes changes to the seeds in one of the set-ups.

(a) Which set-up do you think it is?

Set-up _____ [1]

(b) Give a reason for your answer in (a).

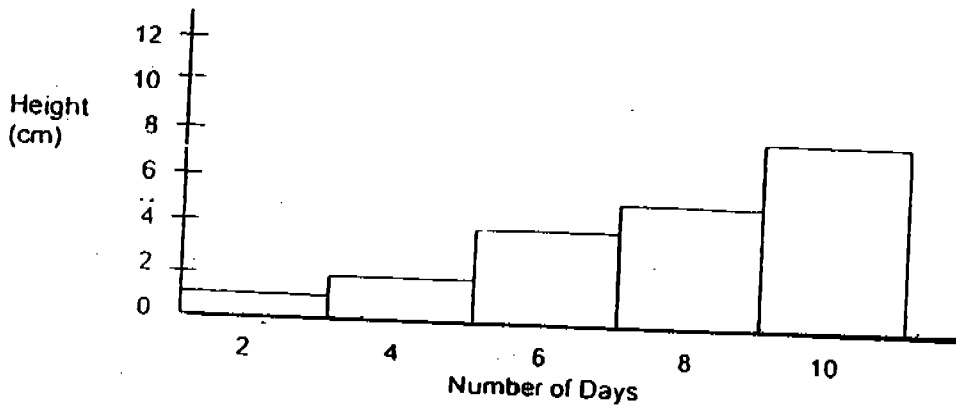
_____ [1]

17. Name the sense organ which tells you the following:

- (a) The fruit is sour : _____
- (b) The electric stove is hot : _____
- (c) The bell is ringing : _____
- (d) The building is very tall : _____

[2]

18. A plant was placed in a pot and its height was recorded every two days as shown in the graph below.



The plant grew by _____ cm from Day 8 to Day 10.

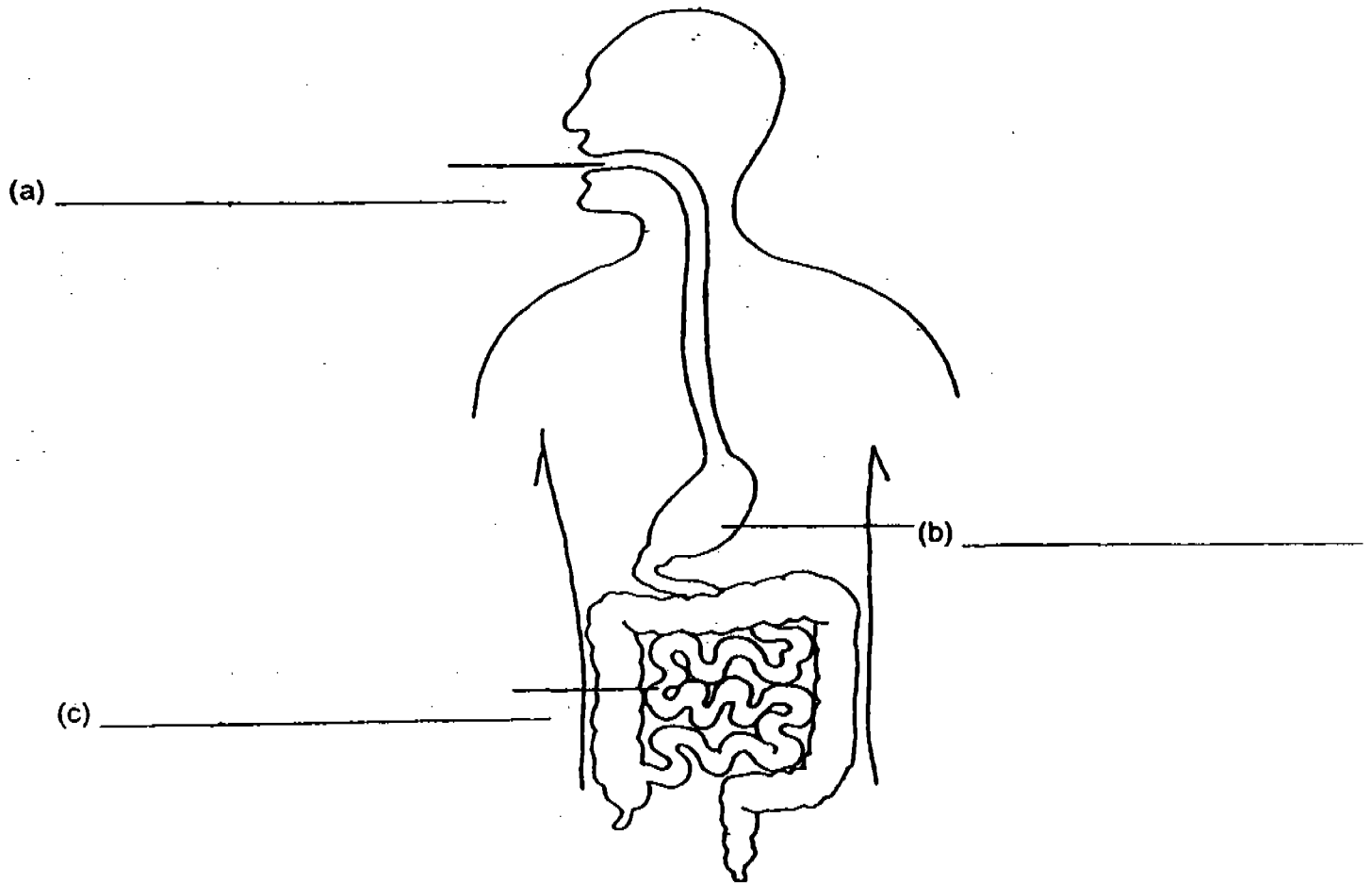
[1]

19. Name all the senses that can be used by a deaf and dumb man.

[2]

938

20. Name the parts. (a), (b) and (c) of the digestive system below.



[3]

END OF PAPER

MAHA BODHI PIMARY SCHOOL
 PRIMARY 3 SCIENCE 2005
 CONTINUAL ASSESSMENT 2

ANSWER SHEETS

1. 2

2. 1

3. 1

4. 4

5. 4

6. 4

7. 4

8. 3

9. 4

10. 4

11. 3

12. 1

13.i)Metal

ii)Wood

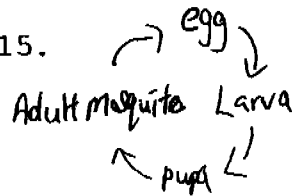
iii)Plastic

iv)rubber

14.i)Plastic is lighter glass and ceramic.

ii)Plastic will not break easily as glass and ceramic.

15.



16.a)B

b)Seed is set-up B have under for them to grow but seed in set-up A do not have water.

17.a)Tongue

b)Skin

c)Ears

d)Eyes

18.The plant grew by 3 cm from Day 8 to Day 10

19.Touch taste,sight,smell

20.a)Mouth

b)Stomach

c)Small intestine