

MAHA BODHI SCHOOL
2004 CONTINUAL ASSESSMENT 2
SCIENCE

CA 2

NAME: _____ ()

DATE : 26 AUGUST 2004

CLASS: PRIMARY 3 ()

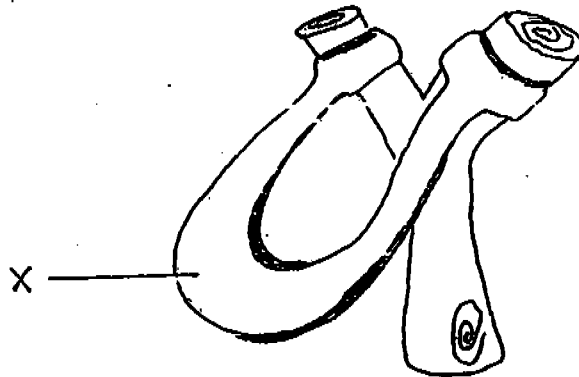
DURATION : 1 H 15 MIN
(PART I & II)

Part I: (24 marks)

For each question from 1 to 12, four options are given. One of them is the correct answer.

Make your choice (1, 2, 3 or 4). Shade the correct answer (1, 2, 3 or 4) on the Optical Answer Sheet (OAS).

1.



The picture above shows a catapult. The part marked X is made of rubber because it is _____.

- (A) elastic
- (B) light
- (C) stiff
- (D) transparent

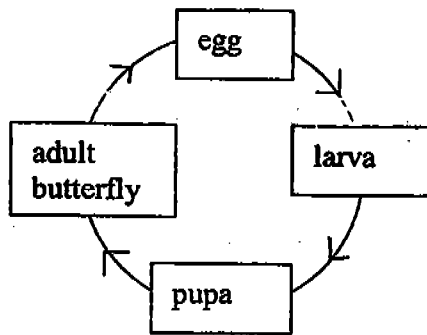
- (1) A and B
- (2) A and D
- (3) B and C
- (4) C and D

2. Penny wants to make a box using a material that is not easily breakable and can be seen through.
Which one of the following materials can she use?

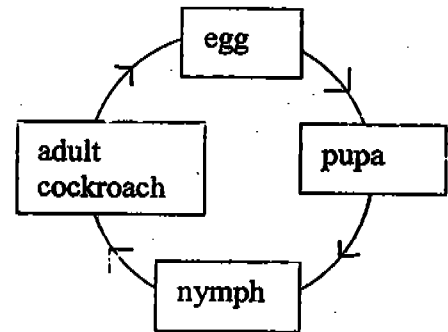
- (1) Glass
- (2) Plastic
- (3) Rubber
- (4) Wood

3. Which one of the following life-cycles is not correct?

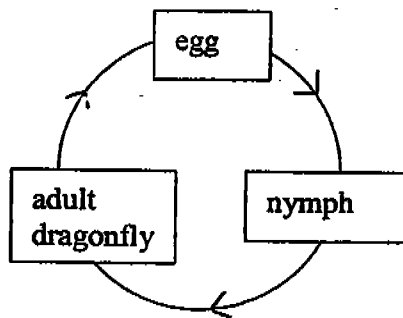
(1)



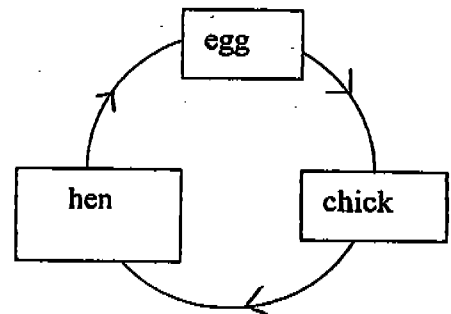
(2)



(3)



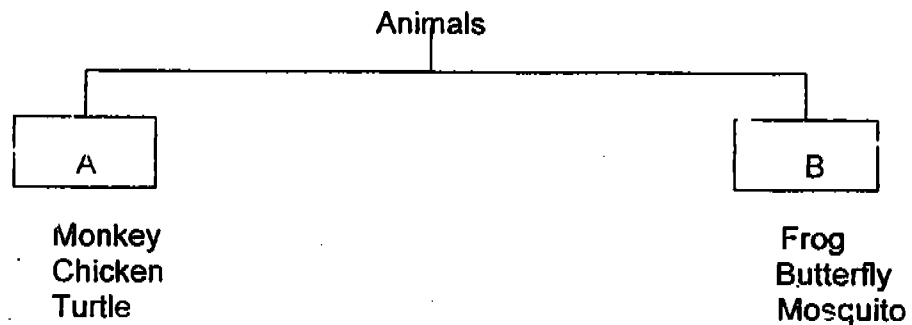
(4)



4. In an egg, there is an air space between the two layers of the _____ to provide air for the chick.

- (1) egg shell
- (2) membrane
- (3) egg yolk
- (4) egg white

5. Which one of the following lists shows suitable headings for A and B in the classification table below?



	A	B
(1)	Young look like their parents	Young look different from their parents
(2)	Cannot fly	Can fly
(3)	3-stage life cycle	4-stage life cycle
(4)	Have 4 legs	Have more than 4 legs

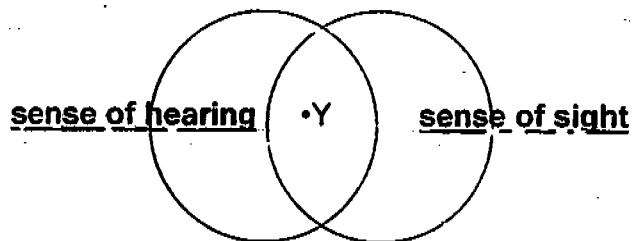
6. A seed needs _____, _____ and _____ before it can germinate.
- (1) fertiliser, air and warmth
 - (2) water, air and fertiliser
 - (3) warmth, water and food
 - (4) air, warmth and water
7. A/An _____ is made up of many _____ which work together to enable it to function properly.
- (1) organ, systems
 - (2) part, organs
 - (3) system, parts
 - (4) part, systems

8. Mary blindfolded Jane and gave her a rose.
Which sense organ(s) help(s) Jane to identify that it was a rose?

- (A) Eyes
- (B) Skin
- (C) Tongue.
- (D) Nose

- (1) A only
- (2) B and D only
- (3) B, C and D only
- (4) A, C and D only

9. Study the Venn diagram below.
Which activity can 'Y' be?



- (1) Watching a television programme
 - (2) Eating a bowl of noodles
 - (3) Painting a picture
 - (4) Listening to the radio
10. The respiratory system takes _____ into the body and removes _____ from the body.
- (1) food, water
 - (2) water, food
 - (3) oxygen, carbon dioxide
 - (4) carbon dioxide, oxygen

11. Our _____ and _____ systems must work together in order for us to move.

- (1) muscular..... circulatory
- (2) skeletal..... muscular
- (3) circulatory.....digestive
- (4) digestive.....skeletal

12. Which one of the following about the skeletal system is not correct?

- (1) It supports the body.
- (2) It gives the body its shape.
- (3) It protects the delicate organs in the body.
- (4) It helps the different parts of the body to grow

-----End of Part I -----

MAHA BODHI SCHOOL
2004 CONTINUAL ASSESSMENT 2
SCIENCE

NAME: _____ ()

PRACTICAL TEST: ____ / 10

CLASS: PRIMARY 3 / ()

WRITTEN TEST: ____ / 40

DATE : 26 AUGUST 2004

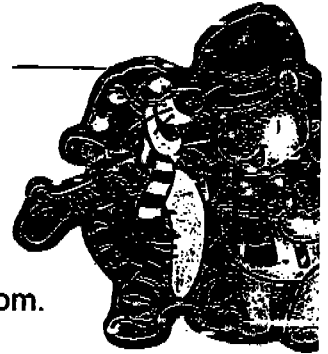
MARKS: ____ / 100

DURATION: 1 H 15 MIN

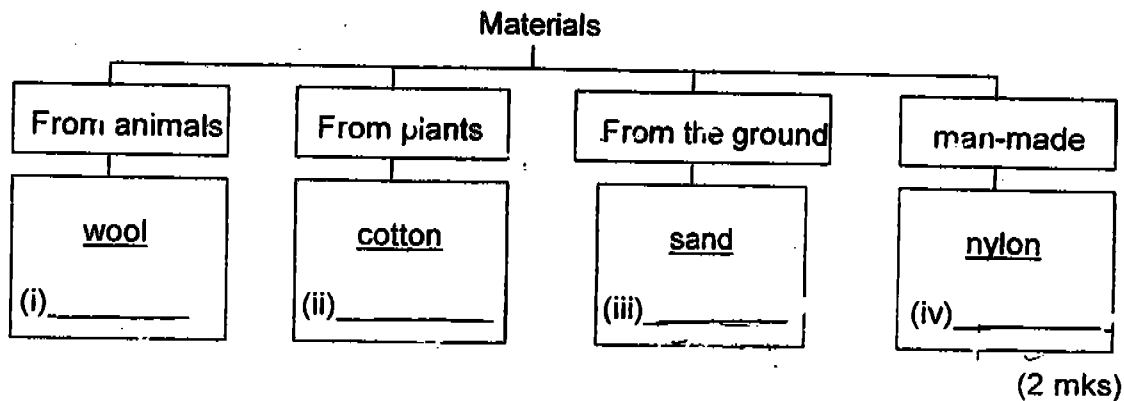
PARENT'S SIGNATURE: _____

Part II: (16 marks)

Write your answers to questions 13 to 19 in this script.



13. The table below shows some materials and where they come from. In every group, an example is given. State another material in each of the groups.

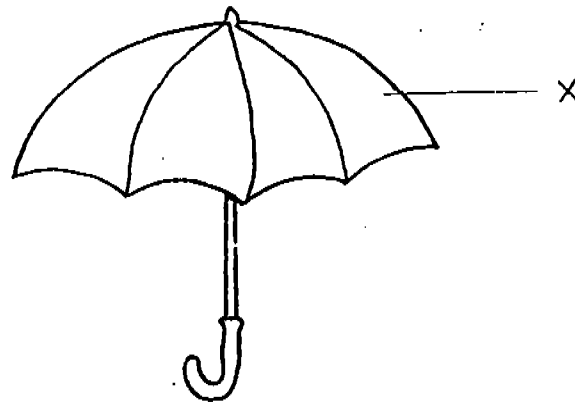


14. (a) What is the main reason for the hen to sit on the eggs after they are laid?

(1 mk)

- (b) Name the process in which an animal grows new skin and sheds the old one.

15.



(a) Which material is most suitable for making the part marked 'X' in the diagram shown above?

(b) Give one reason for your answer in (a).

(4 mk)

16. For each of the given statements shown below, write 'T' in the box if the statement is true or 'F' if the statement is false.

(i) Our eyes are protected by our eyelids and eyelashes as they help to keep dust and dirt out of our eyes.

(ii) The air that we breathe in is cleansed by the hair in our nose.

(iii) Our sense of hearing can tell us the size of an object.

(iv) Our skin is the largest among all our sense organs.

(2 mks)

17. Arrange the following statements to show the correct order of the life cycle of a tomato plant by numbering them from 1 to 5. The last one has been done for you.

- (i) The seedling starts making its own food.
- (ii) The shoot appears from the seed.
- (iii) Fruits are formed from the flowers.
- (iv) The root appears from the seed.
- (v) Flowers appear on the plant.

(2 mks)

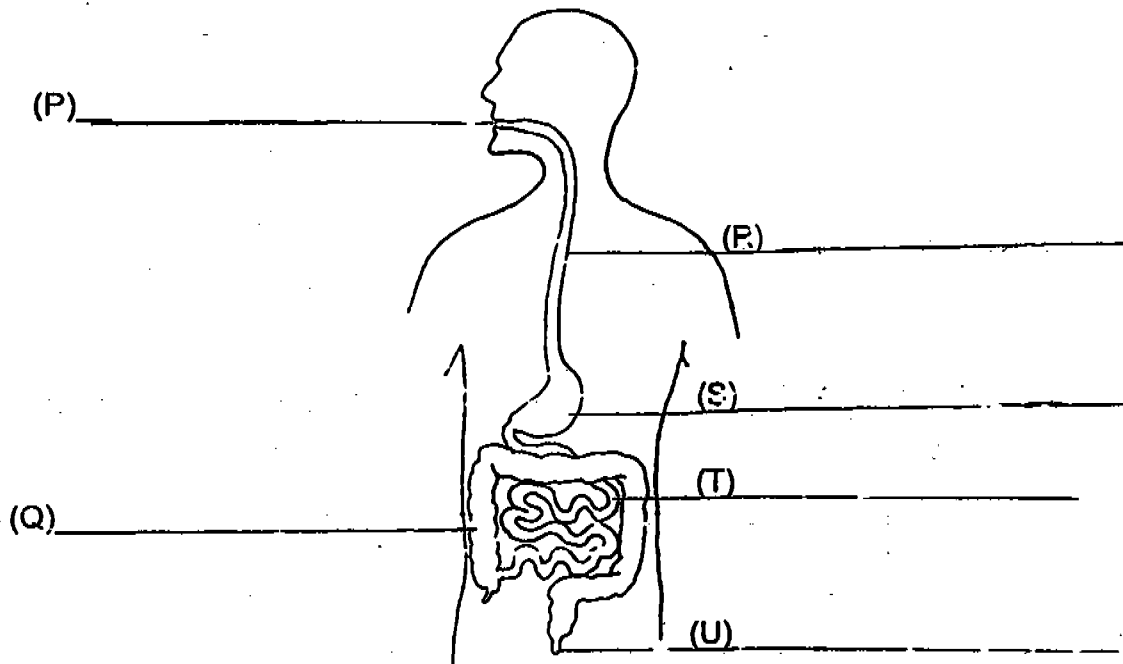
18. Jeremy was doing some silent reading in his room when the door bell rang. In the table below, identify the sense organs and the senses used by Jeremy.

Events	Sense organ	Sense
(i) Reading a book		
(ii) Heard the door bell ring		

(2 mks)

19. The diagram below shows the digestive system of a human body.

(a) Name only the parts where digestion takes place.



(2 mks)

(b)(i) Name the digestive juice that helps to wet and soften the food that we eat.

_____ (½ mk)

(ii) Which part P, Q, R, S, T or U can the digestive juice in b(i) be found?

_____ (½ mk)

(c) Undigested food is passed out of the body as faeces through part

_____ which is known as the _____ (1 mk)

-----End of Paper-----

MAHA BODHI SCHOOL
2004 CONTINUAL ASSESSMENT 2
PRIMARY 3 SCIENCE

CA2

- 1) 1 13) i) silks ii) rubber iii) metal iv) plastic
- 2) 2
- 3) 2 14) a) To provide warmth for the development of the chick.
- 4) 2 b) The process is called "moulting".
- 5) 1 15) a) The most suitable material is plastic.
- 6) 4 b) Plastic is waterproof.
- 7) 3 16) i) T
- 8) 2 ii) T
- 9) 1 iii) F
- 10) 3 iv) T
- 11) 2 17) i) 3
- 12) 4 ii) 2
- iii) 5
- iv) 1
- v) 4
- 18) i) eyes sight
- ii) ear hearing
- 19) a)
- (P) mouth
- (R) gullet
- (S) stomach
- (T) small intestine
- Q)
- (U)
- b) i) The name is saliva ii) Part P
- c) Part U anus