

Name : _____ ()

Class : Primary 3 _____

CHIJ ST NICHOLAS GIRLS' SCHOOL



Primary 3

Second Continual Assessment – 2004

Science

CA2

26th August 2004

Test Score :

Practical	
Section A	
Section B	
Total	

Class (Highest Score) :		Level (Highest Score) :	
Class Average :		Level Average :	

Duration of Paper : 1 h 30 minutes

Do not open the booklet until you are told to do so.

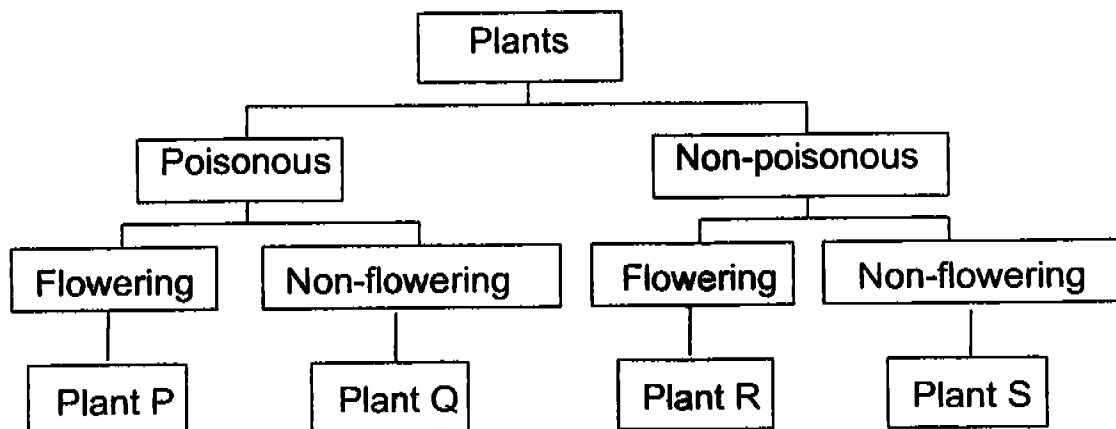
Follow all instructions carefully.

Section A: (25 x 2 marks)

In each question, there is one correct answer. Choose the correct answer and shade the oval bearing the correct number in the Optical Answer Sheet (OAS) provided.

1. In which one of the following groups is all the objects obtained from living things?
 - (1) leaf, hair, wool and sand
 - (2) wine, tooth, cotton and soil
 - (3) bone, wood, glass and iron
 - (4) skin, paper, seed and leather

2. Study the classification table below carefully.



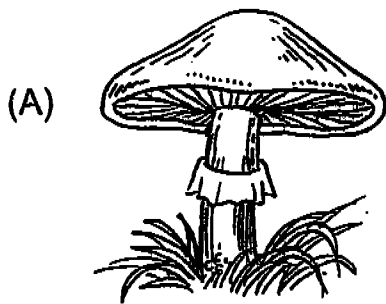
Which one of the following best represents Plant P?

- (1) Rose
- (2) Periwinkle
- (3) Pinetree
- (4) Chrysanthemum

3. Which one of the following is true of all mammals?

- (1) They lay eggs.
- (2) They have hair.
- (3) They have tails.
- (4) They have four legs.

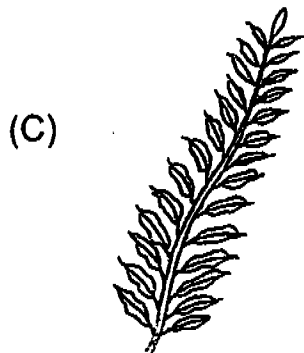
4. Which of the following organisms cannot make its own food?



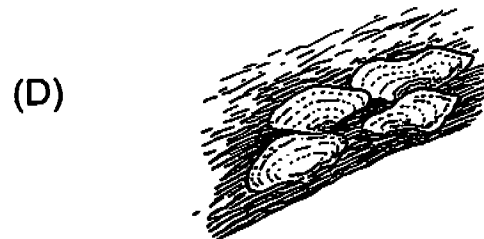
Mushroom



Coleus



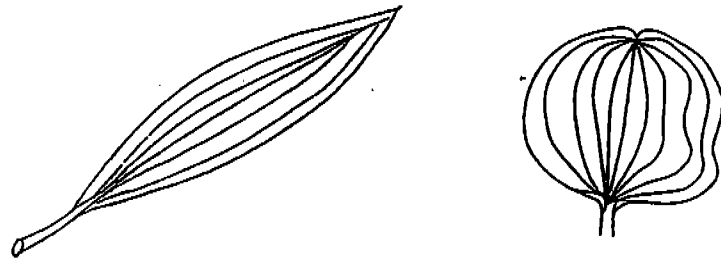
Fern



Jew's ears

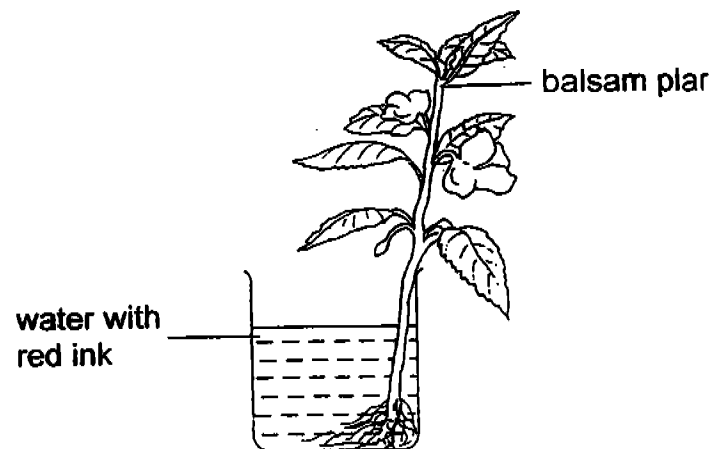
- (1) A and B only
- (2) B and C only
- (3) C and D only
- (4) A and D only

5. The diagram shows two leaves which appear to be very different but are, in fact, similar in some ways.



From what you can observe in the diagram, which of the following is one of the similarities?

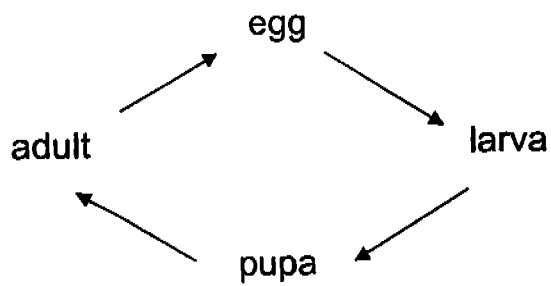
- (1) They are green leaves.
 - (2) They have lobed edges.
 - (3) Their veins are of the same pattern.
 - (4) Their surface are of the same roughness.
6. Mary puts a balsam plant into a beaker of water in which some red ink has been added. A few hours later, she observes that the flowers turn from white to red.



What does this experiment show?

- (1) The stem joins the roots to the rest of the plant.
- (2) Water is absorbed by the plant only through its roots.
- (3) The stem carries water from the roots to the rest of the plant.
- (4) Water is lost to the surroundings from every part of the plant.

7.

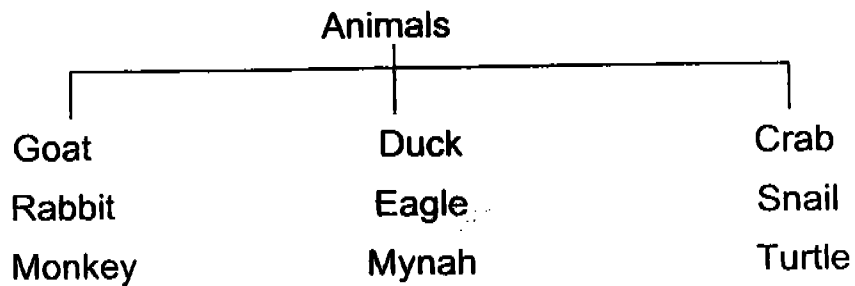


Which two animals below go through the life cycle shown above?

- (A) Housefly
- (B) Mosquito
- (C) Cockroach
- (D) Grasshopper

- (1) A and B only.
- (2) A and C only.
- (3) B and D only.
- (4) C and D only.

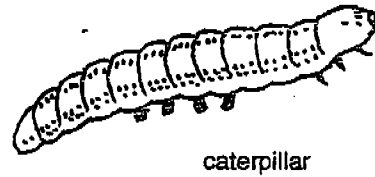
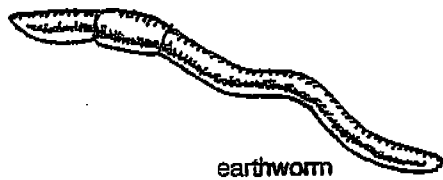
8. The diagram shows three groups of animals.



These animals are classified according to _____.

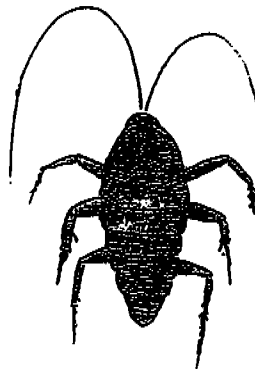
- (1) their eating habits
- (2) the way they move
- (3) their breathing parts
- (4) their body coverings

9. How do the animals shown below breathe?



	Earthworm	Caterpillar
(1)	skin	breathing holes
(2)	breathing holes	skin
(3)	skin	gills
(4)	gills	breathing holes

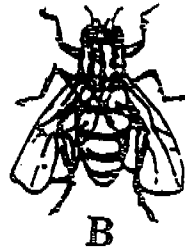
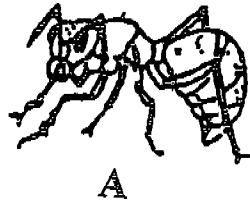
10. The diagram shows the young of an animal.



The adult is a _____.

- (1) a mosquito
- (2) a cockroach
- (3) a mealworm
- (4) a grasshopper

11. Study the diagrams below carefully.



Based on your observations, which one of the following statements is definitely correct?

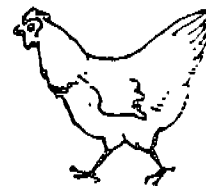
- (1) Both A and B cannot fly.
- (2) Both A and B eat the same food.
- (3) Both A and B have six legs each.
- (4) Both A and B live in the same place.

12. Study the pictures below carefully. Which one of these animals does not belong to the same group as the others?

(1)



(2)



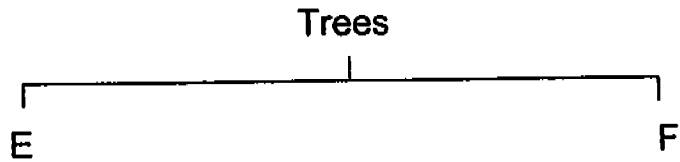
(3)



(4)



13. Trees can be classified into two groups.



Which one of the following headings can "E" and "F" be?

	E	F
(1)	stem	no stem
(2)	roots	no roots
(3)	leaves	no leaves
(4)	flowers	no flowers

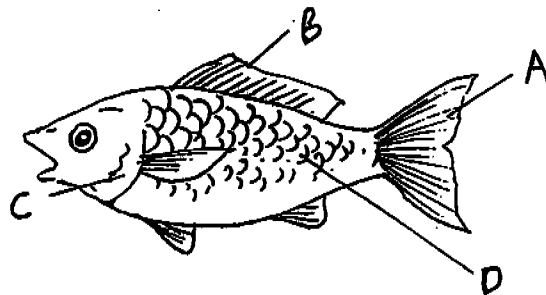
14. How do the lungs take in and give out air?

- (1) By expansion and contraction of the lungs.
- (2) By a valve that opens and closes the lungs.
- (3) By a pump that pushes air in and out of the lungs.
- (4) By the heart helping the lungs push and draw in air.

15. The onion grow into new plants from the _____ .

- (1) roots
- (2) bulbs
- (3) shoots
- (4) leaves

16. Study the diagram below. Which one of the following options identify the parts of the fish correctly?



	A	B	C	D
(1)	fin	gill cover	tail	scales
(2)	tail	fin	gill cover	scales
(3)	scales	tail	fin	gill cover
(4)	gill cover	scales	fin	tail

17. Which of these are functions of the heart?

- (a) Providing the blood with oxygen.
- (b) Pumping blood though the heart itself.
- (c) Pumping blood to all parts of the body.
- (d) Pumping blood to some parts of the body.

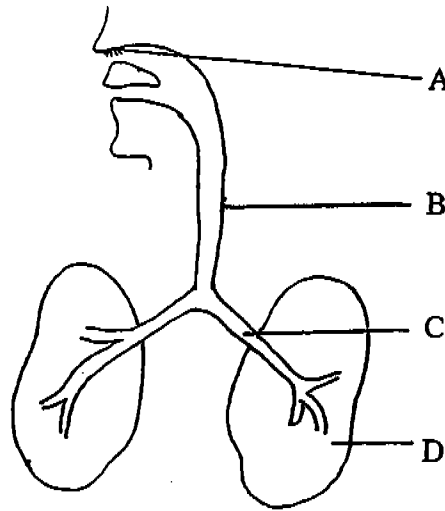
- (1) a and c only
- (2) a and d only
- (3) a, b and d only
- (4) a, c and d only

18. Mary was watching a documentary about monkeys. The monkeys were screeching, running up and down the trees and eating bananas. While watching the documentary, Mary used her _____ .

- (A) sense of taste
- (B) sense of sight
- (C) sense of touch
- (D) sense of hearing.

- (1) A and B only
- (2) A and C only
- (3) B and D only
- (4) C and D only

19. The diagram below shows our breathing system.



The dust particles are trapped in _____ .

- (1) A
- (2) B
- (3) C
- (4) D

20. Joseph has just eaten his lunch which consisted of fried noodles and chicken soup. His food will be digested with the help of the juices from his _____ .

- (A) mouth
- (B) gullet
- (C) stomach
- (D) large intestine
- (E) small intestine

- (1) A and B only
- (2) A, C and E only
- (3) C, D and E only
- (4) All of the above

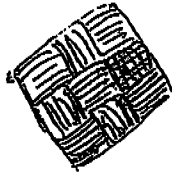
21. The ribs are bones which _____ .
- (A) help us bend our body
 - (B) protect our heart and lungs
 - (C) provide support to our arms
 - (D) help our heart to expand and contract

- (1) B only
- (2) A and D only
- (3) B and D only
- (4) A, B and C only

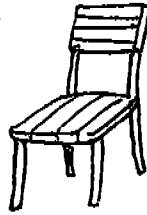
22. A deaf cyclist is riding his bicycle along a narrow road. The driver of an oncoming car can draw the cyclist's attention and make him give way by _____ .

- (1) speeding
- (2) shouting at the cyclist
- (3) blinking the headlights of his car
- (4) pressing his car's horn many times

23.



rice-cake wrapper



wooden chair

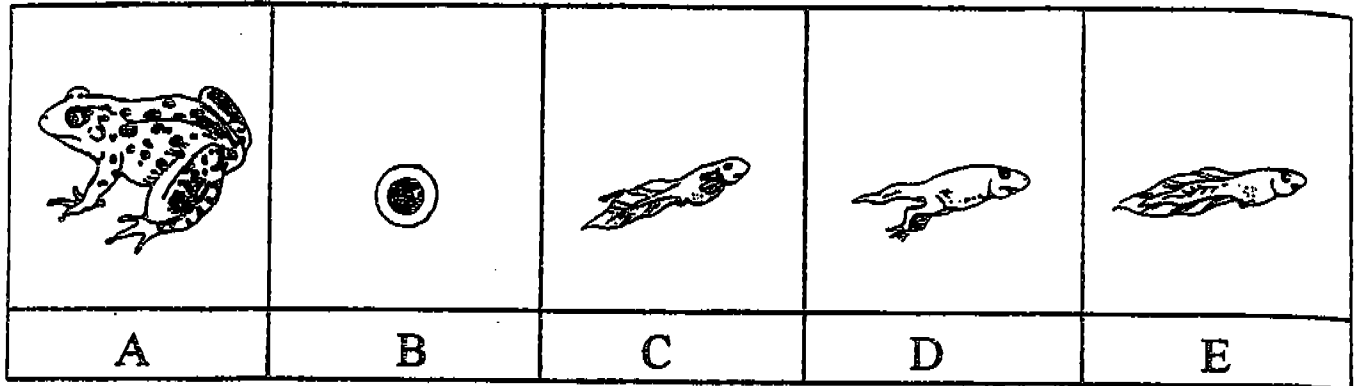


straw hat

The items shown above can be grouped together. Which one of the following is a suitable heading for this group?

- (1) Objects made of man-made materials.
 - (2) Objects made of materials obtained from plants only.
 - (3) Objects made of materials obtained from animals only.
 - (4) Objects made of materials obtained from both plants and animals.
24. A system consists of a group of organs in our body which performs a specific function. Which of the following groups of organs belongs to the same system?
- (1) Skull, ribs and spinal cord
 - (2) Nose, windpipe and lungs
 - (3) Liver, stomach and ribcage
 - (4) Blood vessels, heart and lungs

25. The pictures show the stages in the life cycle of a frog. Which one of the following shows the stages of growth in the correct order.

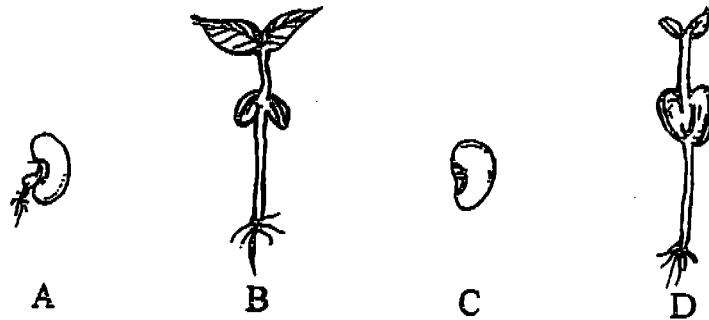


(1)	A	B	D	E	C
(2)	B	D	A	C	E
(3)	B	C	E	D	A
(4)	C	E	D	B	A

Section B (30 marks)

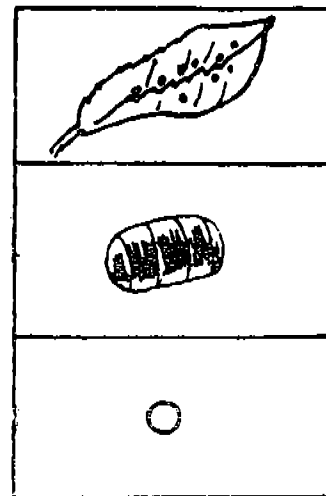
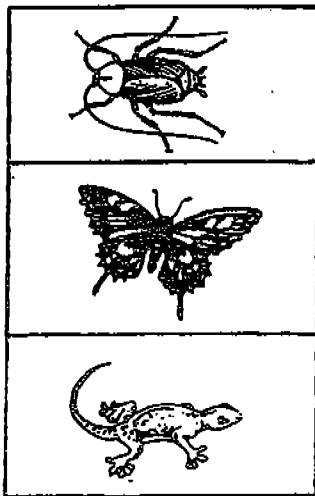
Write your answers in the spaces provided.

26. Arrange in order the stages of growth of the bean seed. The first one has been done for you. (1 mark)

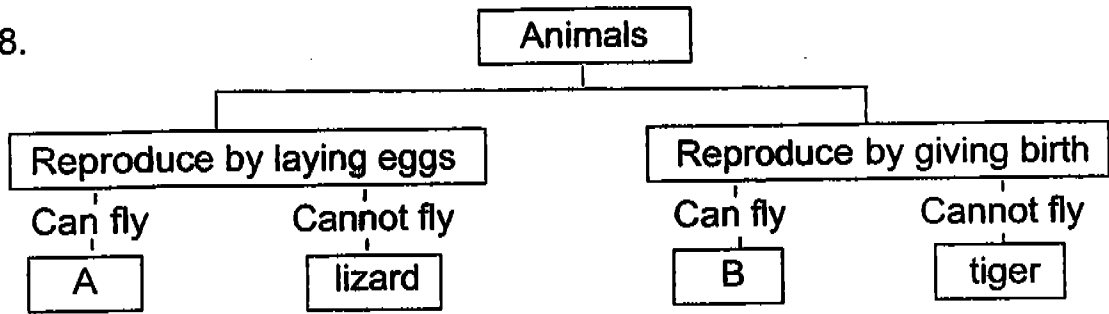


Stages of growth: → → →

27. Draw lines to match the animals to their eggs. (3 marks)



28.



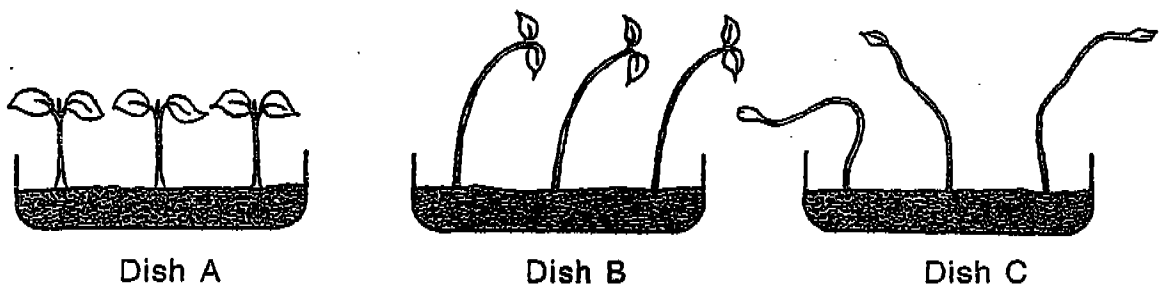
(a) Using the classification table above, describe: (2 marks)

(i) Animal A : _____

(ii) Animal B : _____

(b) Name an animal that can be placed in "A" (1 mark)

29. Jenny put some seeds into the soil in three dishes. Each dish was kept warm and damp. They were put in three different places. The diagrams below show how the seedlings grew after one week.



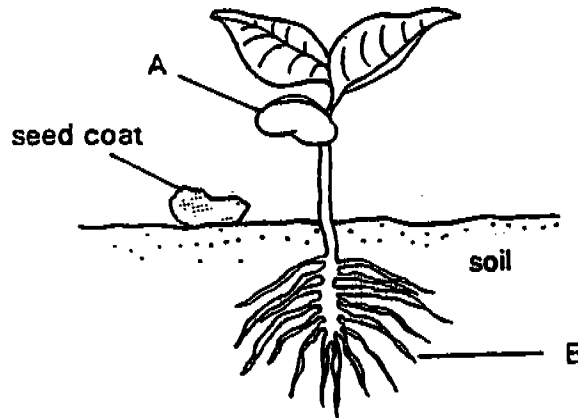
Write down the correct dish in the table below. (3 marks)

Place where dish was kept	Dish
By the window	
In direct sunlight	
In a dark cupboard	



30. The diagram below shows a young plant growing out from a seed. Name parts A and B and state the function of each part.

(4 marks)

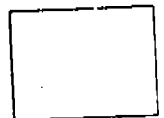


Part A : _____

Function: _____

Part B : _____

Function: _____



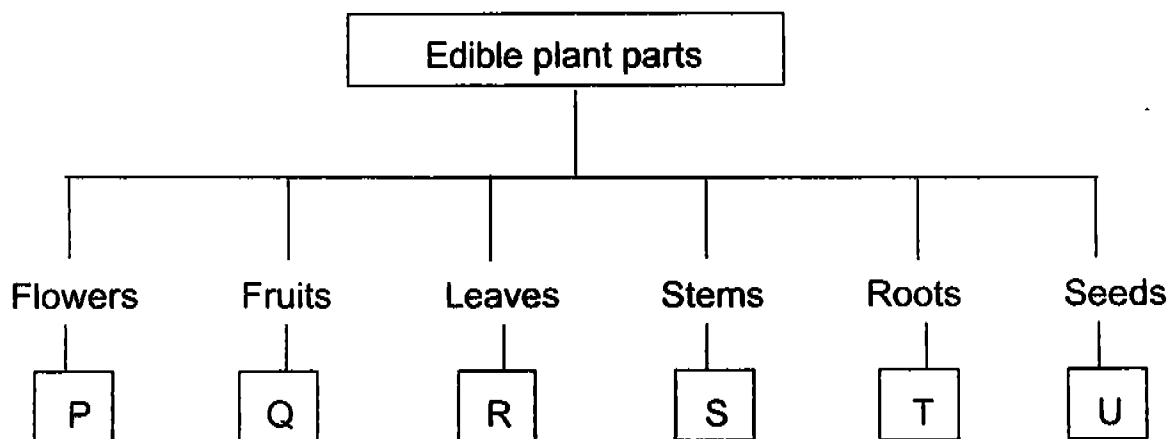
31. The tiny tubes inside the stem of a plant are used for transporting materials from one part of a plant to another. There are two kinds of tubes.

Complete the sentences below using a suitable word or phrase.

(a) One kind of tube transports water and minerals from the _____ to the _____ (1 mark)

(b) The other kind of tube transports food from the _____ to the _____ (1 mark)

32. Classify the following plants according to their edible parts. (3 marks)



Choose the correct letter, P, Q, R, S, T and U, and fill in the blanks below.

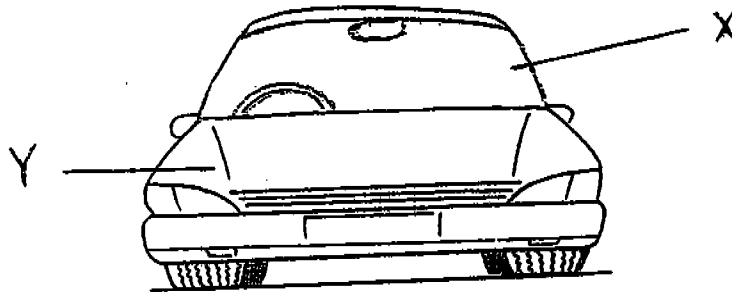
(a) Broccoli _____ (d) Potato _____

(b) Carrot _____ (e) Cucumber _____

(c) Peanut _____ (f) Lettuce _____



33. The diagram below shows a motor car.



(a) Name the materials used to make the following parts. (2 marks)

(i) X _____

(ii) Y _____

(b) Give a reason for your answers above. (2 marks)

(i) X _____

(ii) Y _____



34. A group of pupils collected the following leaves for their project.



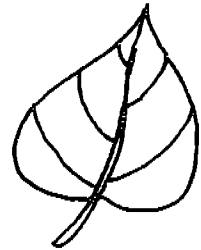
P



Q



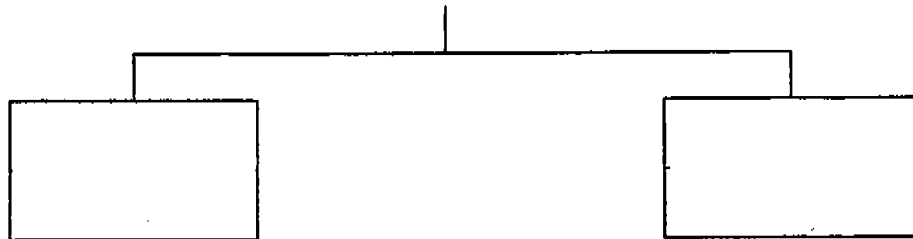
R



S

Using the table below, classify the leaves into two groups by writing the letters (P, Q, R and S) into the correct box below.

(a) Leaves (2 marks)



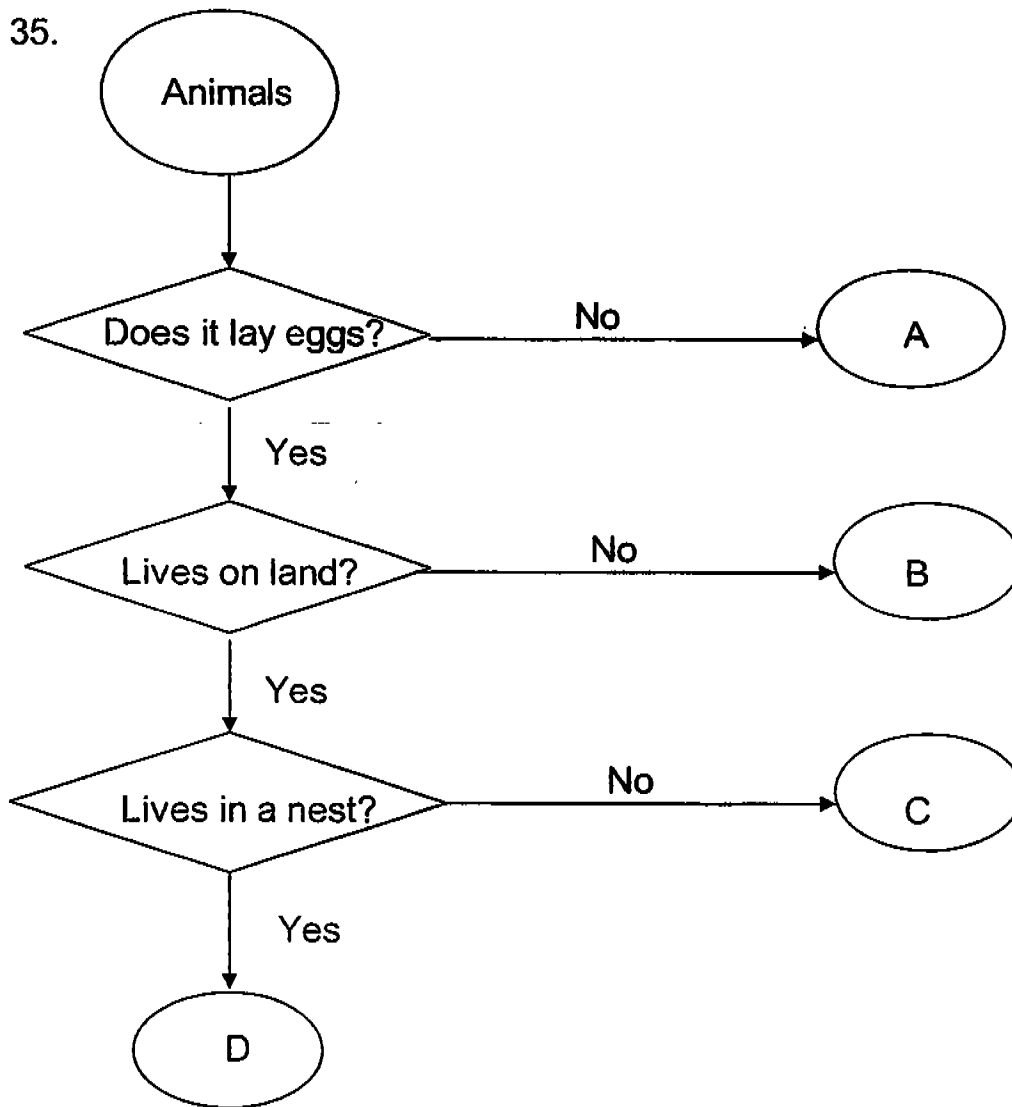
(b) State how you have classified the leaves in (a). (1 mark)

(c) State another way of classifying the leaves into two groups.

(1 mark)



35.



Study the flow chart above and state whether each of the following statement is **True** or **False**. (3 marks)

(a) Animal D lives in water

(b) Animal A gives birth.

(c) Animal B lives in water and lays eggs.



CA2

NAME : _____

DATE : 26.8.2004

CLASS : P3 Science CA2

WRITE		SHADE OVALS									
I N D E X N U M B E R		0	1	2	3	4	5	6	7	8	9
		0	1	2	3	4	5	6	7	8	9
		0	1	2	3	4	5	6	7	8	9
		0	1	2	3	4	5	6	7	8	9
		0	1	2	3	4	5	6	7	8	9
		A	B	C	D	E	F	G	H	I	J

SUBJECT :

Blank box for subject name.

EXAMPLE: IF YOU THINK THE 2ND OPTION IS THE CORRECT ANSWER SHADE THE OVAL LIKE THIS :

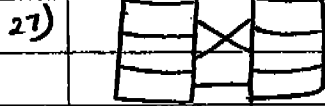


- 1 1 2 3 4
- 2 1 2 3 4
- 3 1 2 3 4
- 4 1 2 3 4
- 5 1 2 3 4
- 6 1 2 3 4
- 7 1 2 3 4
- 8 1 2 3 4
- 9 1 2 3 4
- 10 1 2 3 4
- 11 1 2 3 4
- 12 1 2 3 4
- 13 1 2 3 4
- 14 1 2 3 4
- 15 1 2 3 4
- 16 1 2 3 4
- 17 1 2 3 4
- 18 1 2 3 4
- 19 1 2 3 4
- 20 1 2 3 4
- 21 1 2 3 4
- 22 1 2 3 4
- 23 1 2 3 4
- 24 1 2 3 4
- 25 1 2 3 4
- 26 1 2 3 4
- 27 1 2 3 4
- 28 1 2 3 4
- 29 1 2 3 4
- 30 1 2 3 4
- 31 1 2 3 4
- 32 1 2 3 4
- 33 1 2 3 4
- 34 1 2 3 4
- 35 1 2 3 4
- 36 1 2 3 4
- 37 1 2 3 4
- 38 1 2 3 4
- 39 1 2 3 4
- 40 1 2 3 4
- 41 1 2 3 4
- 42 1 2 3 4
- 43 1 2 3 4
- 44 1 2 3 4
- 45 1 2 3 4
- 46 1 2 3 4
- 47 1 2 3 4
- 48 1 2 3 4
- 49 1 2 3 4
- 50 1 2 3 4
- 51 1 2 3 4
- 52 1 2 3 4
- 53 1 2 3 4
- 54 1 2 3 4
- 55 1 2 3 4
- 56 1 2 3 4
- 57 1 2 3 4
- 58 1 2 3 4
- 59 1 2 3 4
- 60 1 2 3 4

54

(SECTION B)

26) C → A → D → B



28) i) Animals A : It reproduce by laying eggs and can fly .

a) ii) Animals B : It reproduce by giving birth and can fly

b) It is a Sparrow

29) $\frac{B}{A}$
c

30) part A : It is the seed leaf .

Function : It help the young plant to provide food when the leaves have not developed .

part B : It is the roots .

Function : It helps the plant to take in water and mineral salts and hold the plant firmly to the ground .

31) a) (roots) to the (other parts of the plant)

b) (leaves) to the (other parts of the plant)

32) a) P d) S

b) T e) Q

c) u f) R

33) a) i) x . It is glass ii) Y - It is metal

b) x It is transparent ii) Y It is hard .

35) a) False b) True c) True

34) a)

P	Q
R	S

b) Leaves P and R have jagged edges while leaves Q and S have entire edges .

c) Leaves P and S are heart-shaped while leaves Q and R