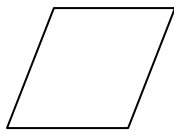




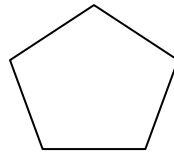
4. Which one of the following shapes is the odd one out?



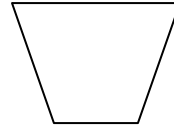
(1)



(2)

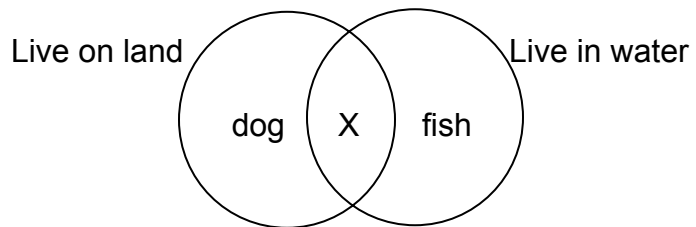


(3)



(4)

5. Study the Venn diagram below.



Which one of the following animals could 'X' be?

(1) duck

(2) turtle

(3) starfish

(4) tadpole

6. Why do animal move about?

A) To look for food

B) To look for shelter

C) To look for sunlight

D) To get away from danger

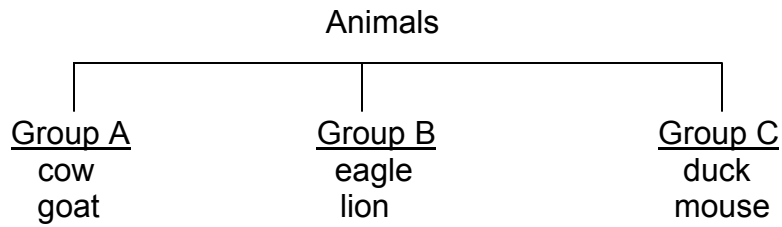
(1) A and D only

(2) B and C only

(3) A, B and D only

(4) B, C and D only

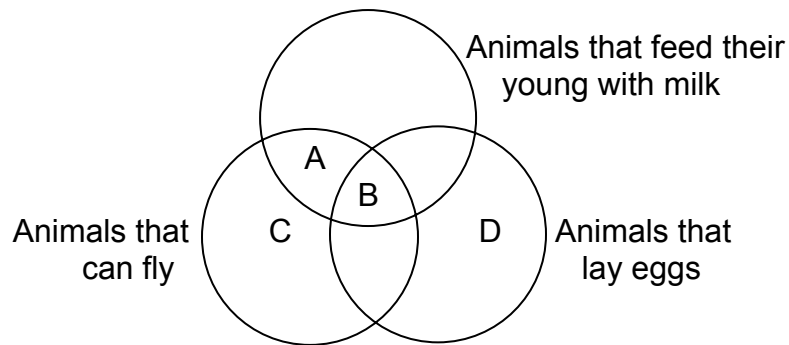
7.



Which one of the following animals can be put in Group C?

- |           |           |
|-----------|-----------|
| (1) horse | (2) snail |
| (3) frog  | (4) bear  |

8. Study the Venn diagram below.



Where would you place 'bat'?

- |       |       |
|-------|-------|
| (1) A | (2) B |
| (3) C | (4) D |

9. How are these animals grouped?

Group A	Group B
frog	cow
eagle	dog

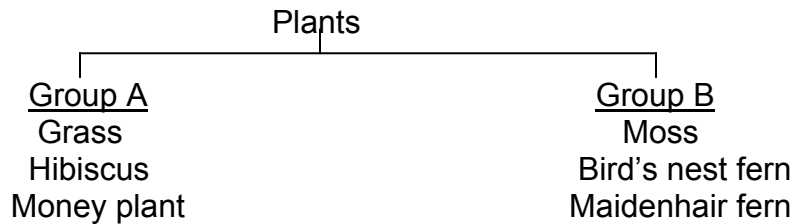
They are grouped according to \_\_\_\_\_.

- (1) where they live
- (2) how they reproduce
- (3) their body coverings
- (4) the type of food they eat

10. Which one of the following conditions is not required for a seed to germinate?

- (1) air
- (2) water
- (3) warmth
- (4) sunlight

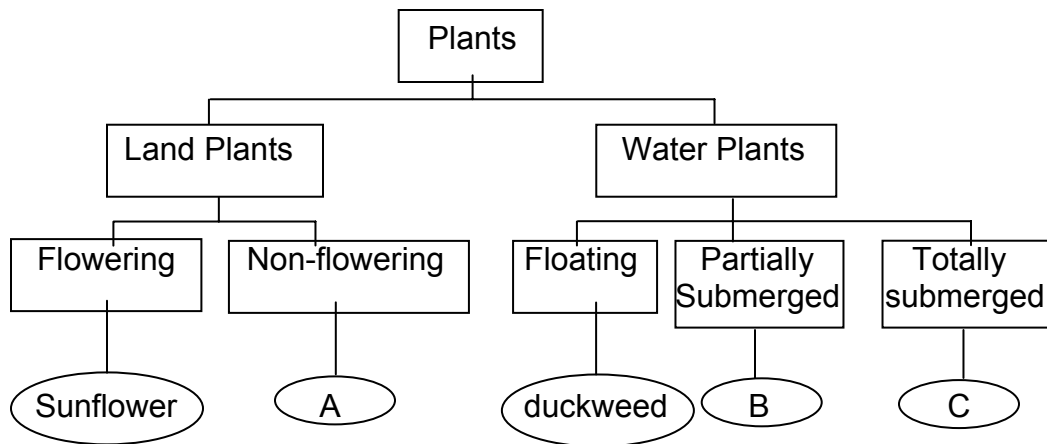
11.



The above plants are classified according to \_\_\_\_\_.

- (1) land plants and water plants
- (2) colourful plants and non-colourful plants
- (3) flowering plants and non-flowering plants
- (4) poisonous plants and non-poisonous plants

12. Study the diagram below carefully.



What plants are A, B and C likely to be?

	<b>A</b>	<b>B</b>	<b>C</b>
(1)	Fern	Water lily	Hydrilla
(2)	Papaya	Lotus	Cattail
(3)	Moss	Water hyacinth	Water lettuce
(4)	Mimosa	Lotus	Hydrilla

13. What do the following organisms have in common?

moss    Jew's ear    fern    mould

- (1) They are fungi.
- (2) They reproduce by spores.
- (3) They can make their own food.
- (4) They feed on other plants and animals.

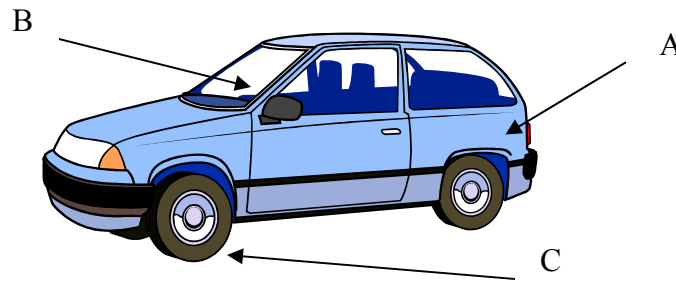
14. Paper is made from the \_\_\_\_\_ of trees.

- (1) sap
- (2) roots
- (3) leaves
- (4) trunk

15. Study the table below. Which of the following is wrongly grouped?

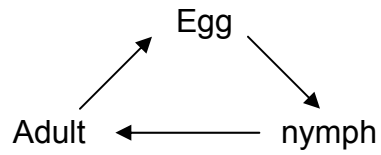
	<b>From Animals</b>	<b>From Plants</b>	<b>From the ground</b>
(1)	Bone	Wood	Rock
(2)	Wool	Cotton	Glass
(3)	Leather	Silk	Iron
(4)	Feathers	Paper	Copper

16. Which of the following shows the correct materials for the parts A, B and C?



	<b>A</b>	<b>B</b>	<b>C</b>
(1)	Metal	Glass	Rubber
(2)	Metal	Rubber	Glass
(3)	Glass	Metal	Rubber
(4)	Glass	Rubber	Metal

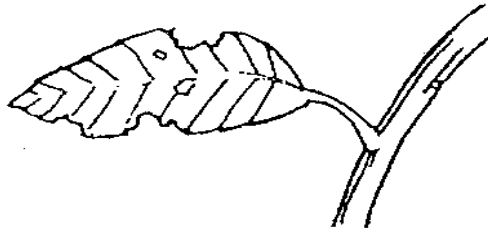
17. The diagram below shows the life cycle of an animal.



Which of the following animals has the same life cycle as above?

- (1) frog
- (2) mosquito
- (3) mealworm
- (4) grasshopper

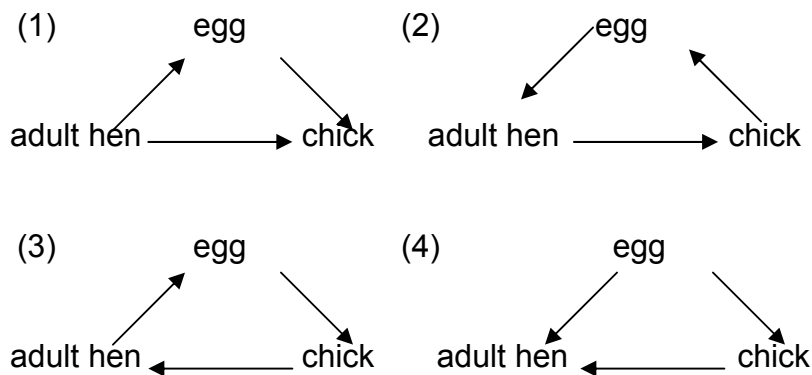
18.



At which stage of the life cycle of a butterfly could have caused the holes on the leaf?

- (1) egg
- (2) larva
- (3) pupa
- (4) adult

19. Which life cycle of a chicken is correctly drawn?



20. The diagram below shows the different stages in the growth of a young plant from a seed.



(A)



(B)



(C)



(D)

Which of the following is the correct order of growth of a plant?

- (1) B → D → C → A
- (2) D → C → B → A
- (3) B → C → D → A
- (4) A → C → D → A

21. Which sense organs would Mrs Wong use to help her in choosing some fresh fish at a market?

A) skin      B) tongue      C) ears      D) eyes

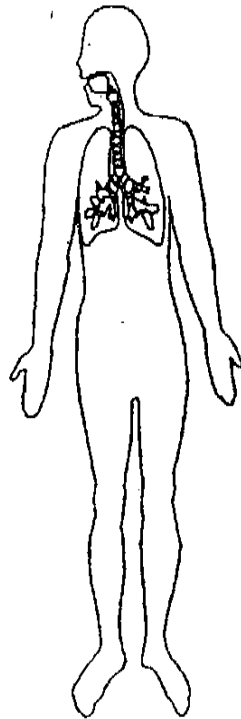
- (1) A and B only
- (2) A and D only
- (3) A, B and C only
- (4) B, C and D only

22. Which of the following is not a function of the skeleton?

- (1) It gives our body shape.
- (2) It holds our body upright.
- (3) It helps our body to move
- (4) It protects the organ inside our body.



23.



Which system of our body does the above diagram show?

- (1) Respiratory system (2) Muscular system  
(3) Circulatory system (4) Skeletal system

24. In our digestive system, the food is completely digested in the \_\_\_\_\_.

- (1) anus (2) small intestine  
(3) large intestine (4) stomach

25. At which parts of the digestive system are digestive juices added to the food?

- A) gullet
- B) stomach
- C) small intestine
- D) large intestine

- (1) A and C only
- (2) B and C only
- (3) C and D only
- (4) A, B and D only

**Section B (30 marks)**

**Write your answers for each question 26 to 36 in the blank spaces provided.**

26. Each of the following observations tells us about what living things can do. Match the following sentences correctly. (2m)

Observations	Living things can...
(a) A hen lays eggs. •	• Grow
(b) A tadpole turns into frog. •	• Move
(c) A mimosa plant closes its leaves when touched. •	• Respond
(d) A boy walks to his school. •	• Reproduce

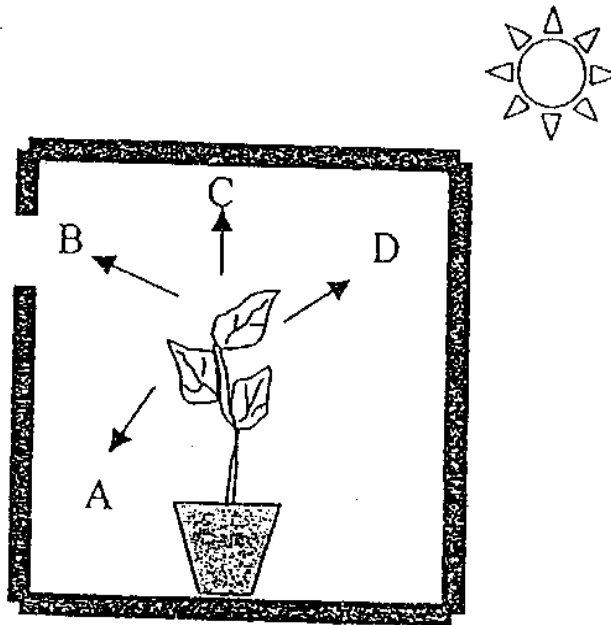
27. Name the sense organs that enables us to observe each of the following situations. (2m)

Observations	Sense Organs
(a) The bittergourd is bitter.	
(b) The sandpaper is rough.	
(c) The leaves are green.	
(d) The children are very noisy	

28. Fill in the blanks with the correct word. (4m)

- (a) Plants with weak stems climb up a support to get \_\_\_\_\_.
- (b) Plants can make their own food because they have green pigment in the leaves called \_\_\_\_\_.
- (c) The \_\_\_\_\_ and \_\_\_\_\_ of a tree give the tree its shape.
- (d) The flower of a plant will develop into a \_\_\_\_\_.

29. A plant is placed in a black box with a small opening as shown in the diagram below. The black box is placed in a sunny place and the plant is watered daily.



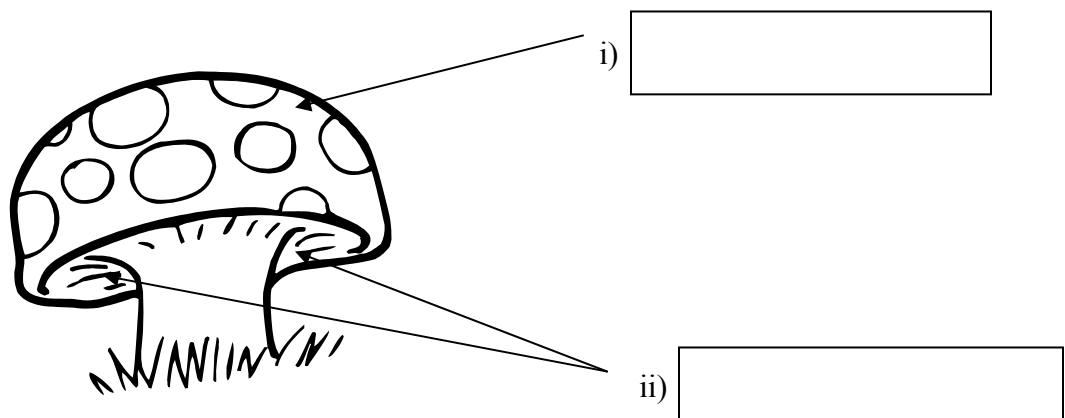
- (a) In which direction (A, B, C or D) will the plant grow after a few days? (1m)

---

- (b) What does this experiment tell you about how plants grow? (1m)

---

30.  
(a) Label the parts of a mushroom. (1m)

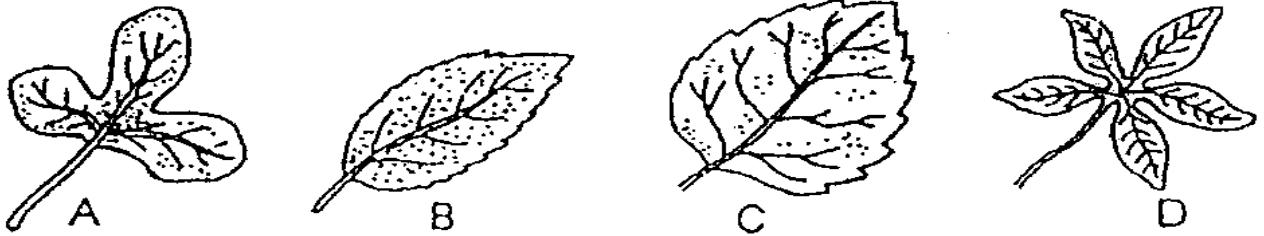


(b) How does the mushroom reproduce? (1m)

---

---

31. Study the leaves shown below.

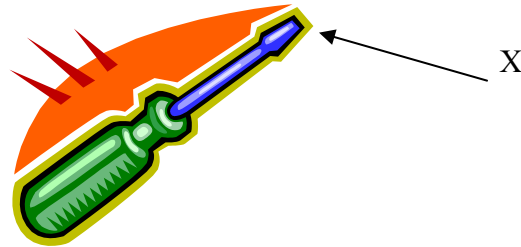


(a) Group the leaves according to the types of edges they have. (2m)

(b) Write the names of the edges for the headings of each group. (1m)

_____ Edge	_____ Edge

32. The diagram below shows a screwdriver.



(a) Name the material that is usually used to make the part that is marked in the diagram. (1m)

---

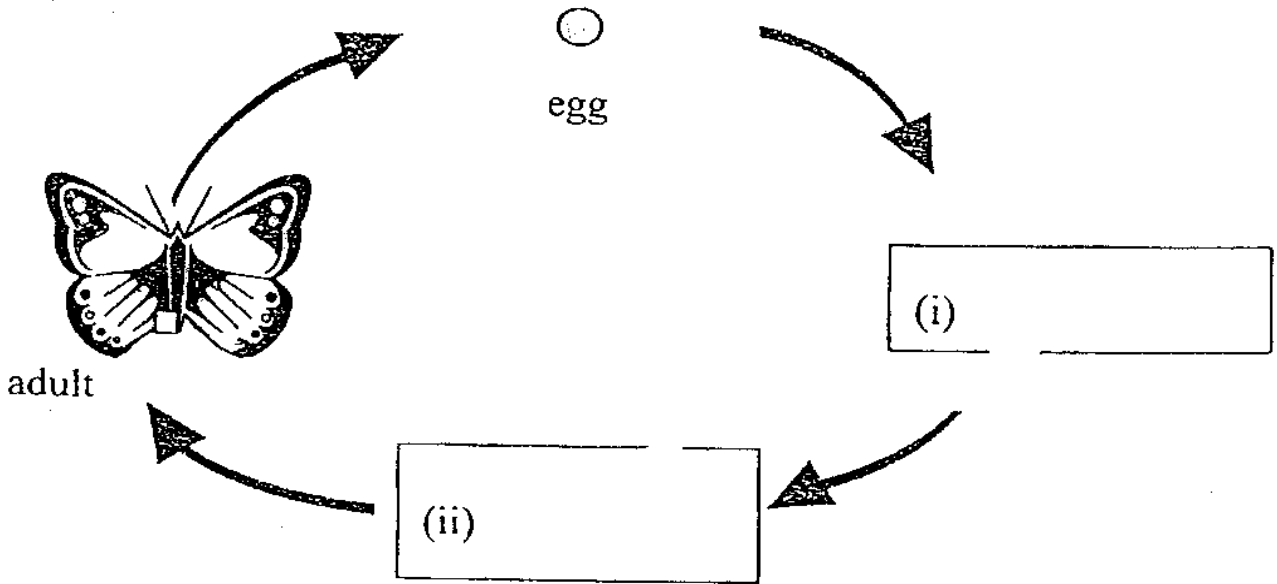
---

(b) Why is this material usually used to make part X? (1m)

---

---

33. The diagram below shows the life cycle of a butterfly.



(a) Write the names of the stages in the boxes provided. (1m)

(b) At which stage does the process of moulting take place? (1m)

---

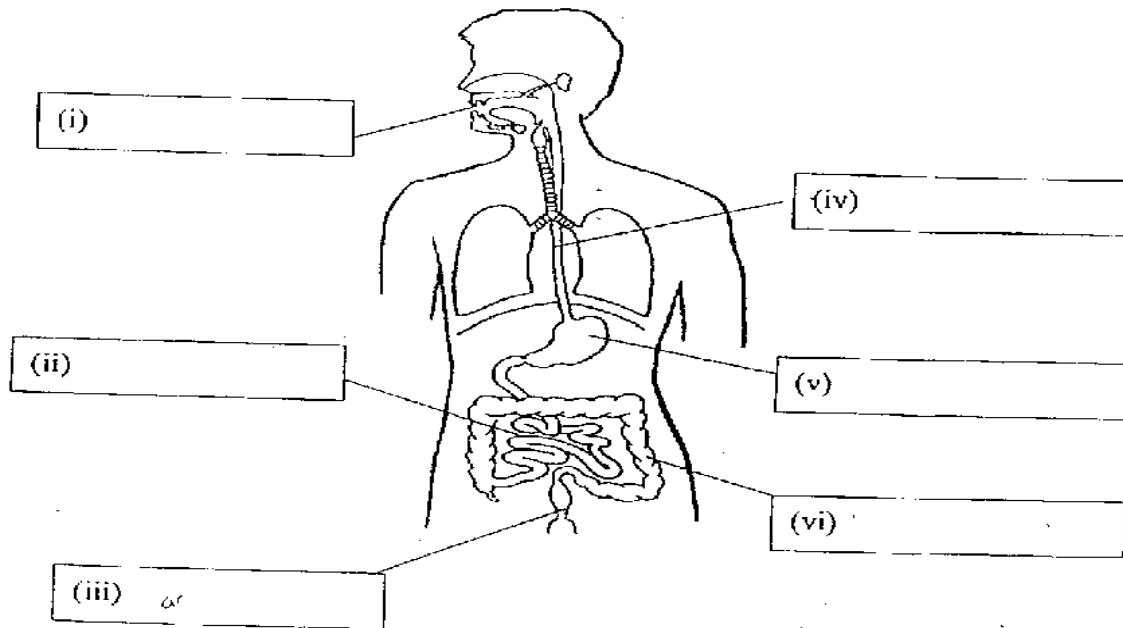
---

(c) How is the life cycle of a butterfly different from that of a cockroach? (1m)

---

---

34. Label the parts of the digestive system below. (3m)

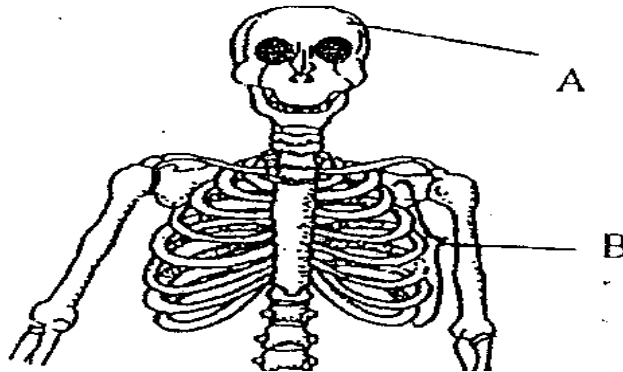


(b) At which part of the digestive system is water removed from the undigested food? (1m)

---

---

35. Study the diagram of the skeleton.



(a) Write down the names of parts A and B in the table below. (1m)

(b) State the organ(s) that each part protects in the table below. (2m)

Parts	Names of parts	It protects the...
A		(i) _____
B		(ii) _____ (iii) _____

36. Fill in the blanks with the correct word. (3m)

(a) A place where two bones meet is a \_\_\_\_\_.

(b) Bones and \_\_\_\_\_ must work together to help us move.

(c) A \_\_\_\_\_ and \_\_\_\_\_ allows our legs to move back and forth in one direction.