

**Primary Three
Science
Continual Assessment Two**

Section A : (18 x 2marks)

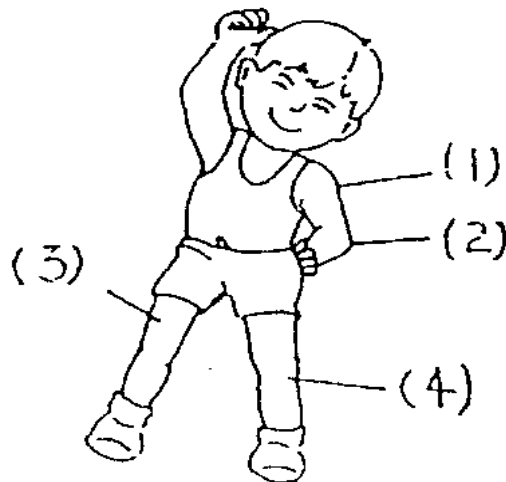
Choose the best option for each question and write its number in the box provided.

1. Which of the following statements are **true** of our muscles?

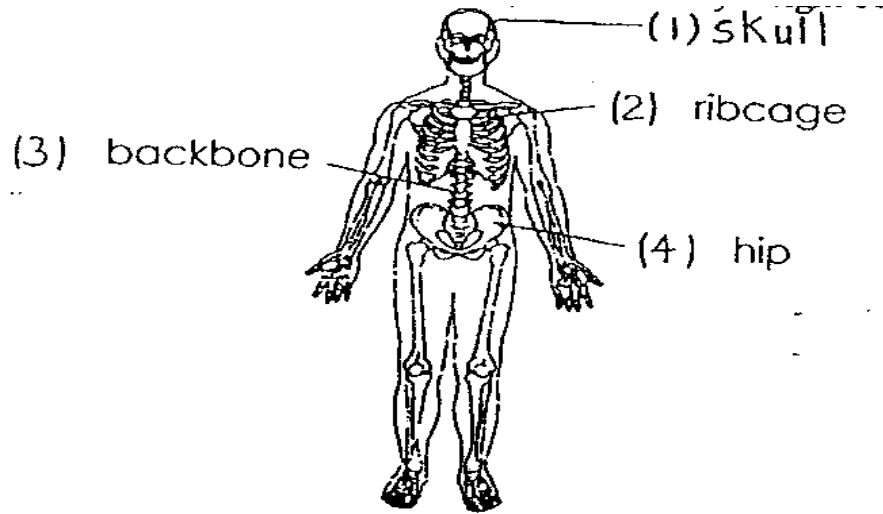
- A. They are just underneath our skin.
- B. They cover our skeleton.
- C. They help to move our bones.

- (1) A and B only (2) A and C only
- (3) B and C only (4) A, B and C

2. Which part of the figure shown does **not** have a joint?



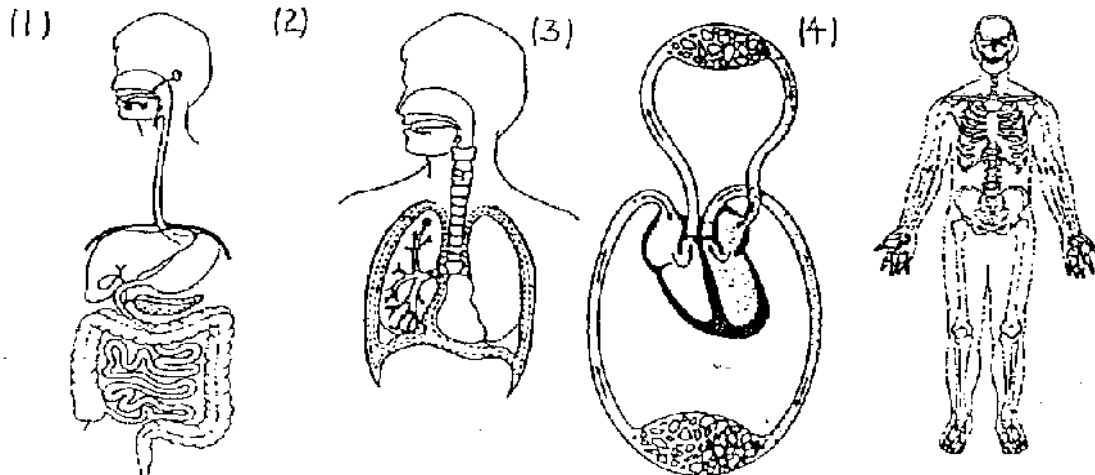
3. Which part of our skeleton supports our body weight besides the legs?



4. What happens when we do a lot of exercise?

- (1) Our muscles become bigger.
- (2) We produce more bones.
- (3) We produce more muscles
- (4) The skeletal system becomes bigger.

5. Which picture below shows the digestive system?



6. Which of the following statements is true of our heart?

- (1) It is about the size of our foot.
- (2) It is beating all the time.
- (3) It is protected by our skull.
- (4) It is part of our respiratory system.

7. Jill recorded the number of times her heart was beating in 1 minute immediately after different activities in the table shown below :

Activity	Number of heartbeat in 1 minute
sleeping	70
reading	102
walking	84
jogging	76

Which 2 activities do you think Jill has recorded incorrectly?

- (1) sleeping and reading
- (2) sleeping and walking
- (3) reading and jogging
- (4) walking and jogging

8. In which one of the following parts of our digestive system is digestive juices **not** added to our food?

- (1) large intestine
- (2) mouth
- (3) small intestine
- (4) stomach

9. The table below compares the differences between the air we breathe in and the air we breathe out.

	Air we breathe in	Air we breathe out
(1)	cleaner	dirtier
(2)	more moisture	less moisture
(3)	warmer	cooler
(4)	more oxygen	less oxygen

Which of them is correct?

10. Which one of these is not a vital organ?

(1) lungs

(2) heart

(3) teeth

(4) stomach

11. The food that we eat is mixed with _____ to make it soft and easy to swallow.

(1) soup

(2) water

(3) saliva

(4) sweat

12. Our sense of _____ allows us to find the texture, shape and size of an object.

(1) taste

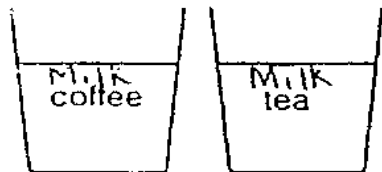
(2) sight

(3) touch

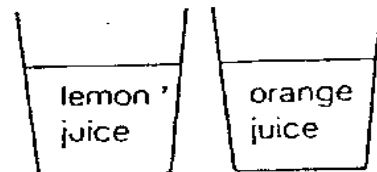
(4) hearing

13. Which pair of the following can John use his hands only to distinguish?

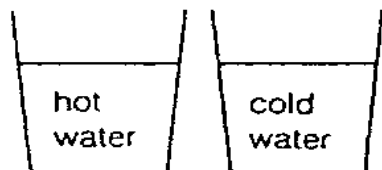
(1)



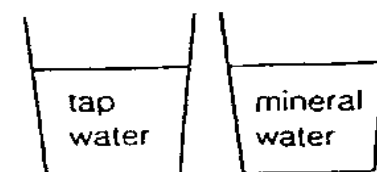
(2)



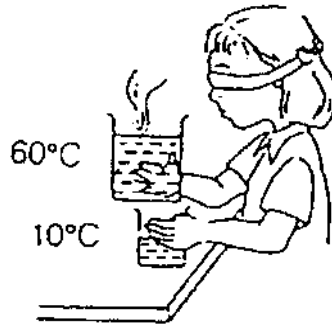
(3)



(4)



14. Joan, who is blindfolded can distinguish the 2 glass containers because their _____ are different.



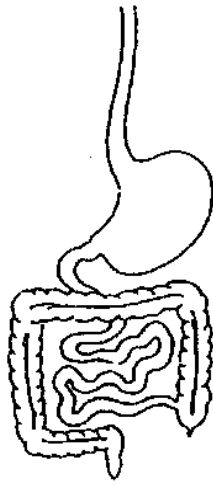
- (1) weights and colours (2) temperatures and textures
(3) sizes and temperatures (4) sizes and colours

15. Which of the following is a function of muscles?

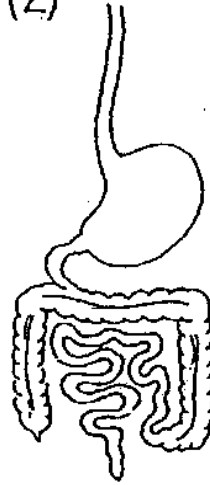
- (1) Muscles break down food.
(2) Muscles protect the bones.
(3) The body makes use of muscles to sense food.
(4) The muscles together with the bones allow us to move.

16. Which of the following diagrams correctly represents the digestive system?

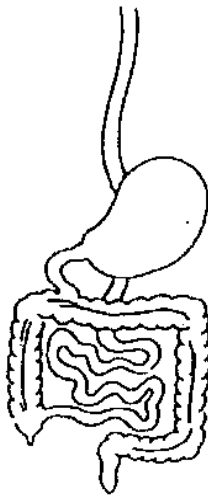
(1)



(2)



(3)



(4)



17. The correct order from when digestion begins in the mouth to the moment **the digested food passes out** of our body through the anus is:

- (1) small intestine → stomach → large intestine → gullet
- (2) gullet → stomach → large intestine → small intestine
- (3) gullet → small intestine → stomach → large intestine
- (4) gullet → stomach → small intestine → large intestine

18. Which statements are true about these two organs?



heart



stomach

- A. They made up of muscles.
- B. Both can contract and relax.
- C. They are found inside the body.
- D. They are part of the digestive system.

(1) B only

(2) C and D only

(3) A, B and C only

(4) A, B and D only

Section B : (7 x 2marks)

Write your answers in the space provided.

19. Give one difference between Bones A and B shown below.



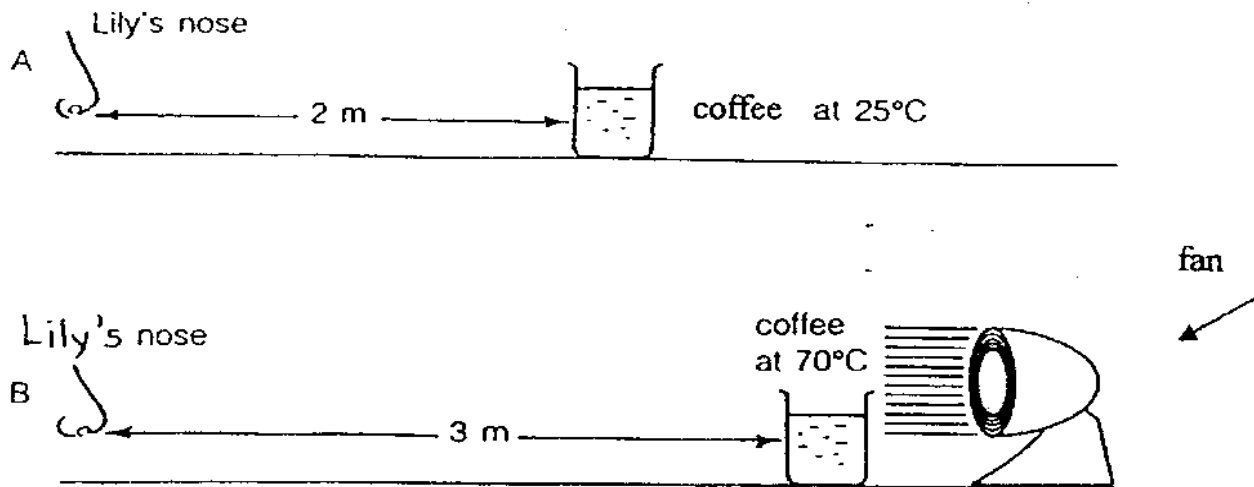
Difference : _____

20. The heartbeat and breathing of John in one minute are measured under different conditions. The results are shown below :

Heartbeats in 1 minute	Number of breaths in 1 minute
75	15
100	30
120	40
150	50

What do you observe about the number of heartbeats and the number of breaths?

21. Lily conducted an experiment to find out the longest distance a cup of coffee can be placed away from her nose in order for her to smell it.



Give one reason why Lily can smell the coffee better in **B** than in **A** :

Reason : _____

22. The heights and weights of Robert and Cindy are given in the table below :

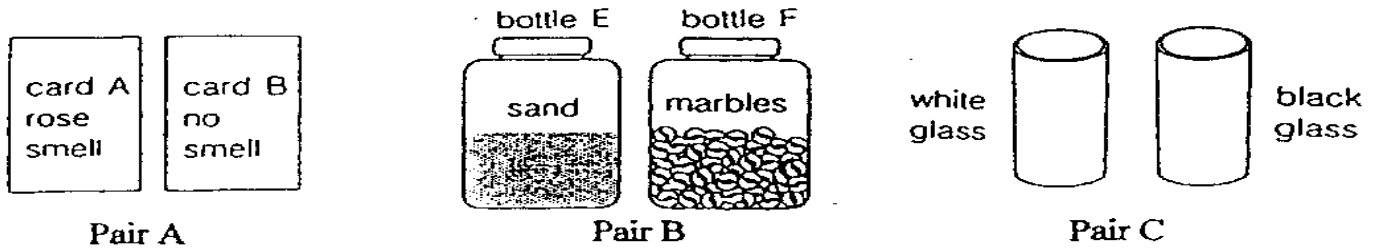
	Height (cm)	Weight (kg)
Robert	152	34
Cindy	148	57

The normal weight for boys and girls with corresponding heights are shown below :

Height (cm)	Girls' Normal Weight (kg)	Boys' Normal Weight (kg)
148	32 – 48	34 – 52
152	35 – 53	38 – 57

Who is overweight and what should that person do to solve his/her problem?

23. There are 3 pairs of objects on a table :



a) Which pair of objects do you think a blindfolded person can identify, **without touching**?

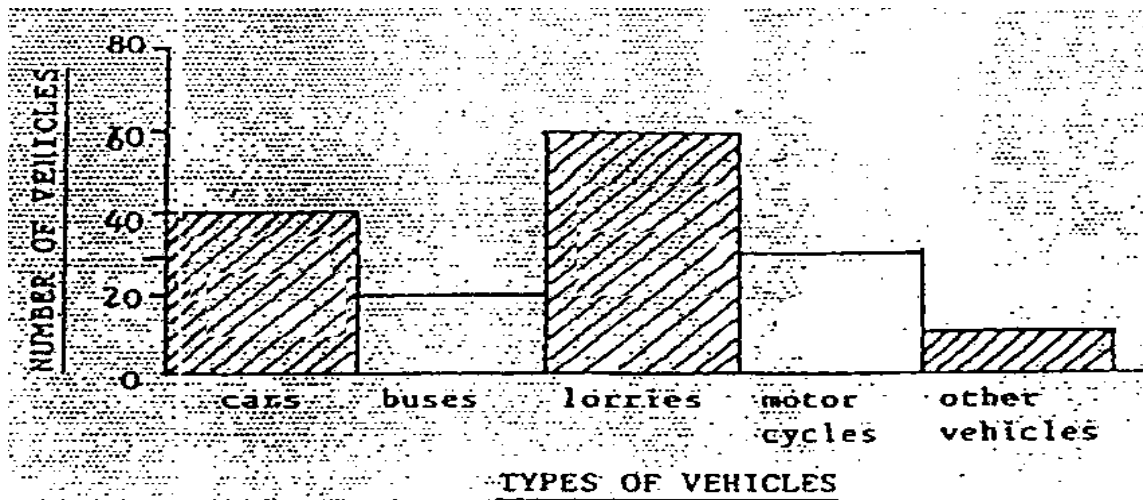
b) Describe how he can identify them?

24. The following are various stages involved in sending out and receiving messages by our brain. Arrange them in the correct order by inserting the letters representing them in the boxes below.

- A) Legs move to the kitchen
- B) A Hand turns off the gas
- C) The Nose sends a message to the brain
- D) A burning smell is detected by the nose

--	--	--	--

25. Jieyi and Sharon counted the number of different types of vehicles that passed by their school from 1.00pm to 1.10pm



Below are two statements made by Jieyi and Sharon.
Study the graph above.
Put a tick () in the correct column.

Statement	True	Not True	Not possible to tell
<ul style="list-style-type: none"> No army trucks were seen during the 10 minutes 			
<ul style="list-style-type: none"> There were more lorries than the total number of cars and motor cycles 			