



CIA 2

AI TONG SCHOOL

2004 CONTINUAL ASSESSMENT 2 PRIMARY THREE SCIENCE

DURATION : 1h 30 min

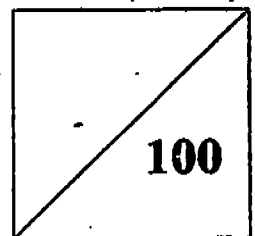
DATE: 26th August 2004

INSTRUCTIONS

**Do not open the booklet until you are told to do so.
Follow all instructions.
Answer all questions.**

Name : _____ (姓)

Marks :



Class : Primary 3 _____

Parent's Signature : _____

Date : _____

Section A

Choose the correct answer and shade in the OAS provided.

(2marks x 25 = 50)

1. Which one of the following statements about a kangaroo is not true?
 - (1) It lives on water.
 - (2) It is a plant eater.
 - (3) It gives birth to its young.
 - (4) It moves about by hopping.

2. How is a dolphin similar to a whale?
 - (1) They are both fish.
 - (2) They breathe through their gills.
 - (3) They reproduce by laying eggs.
 - (4) They are mammals which live in the sea.

3. Which one of the following things is waterproof?
 - (1) cotton shirt.
 - (2) jam jar.
 - (3) tissue paper.
 - (4) towel.

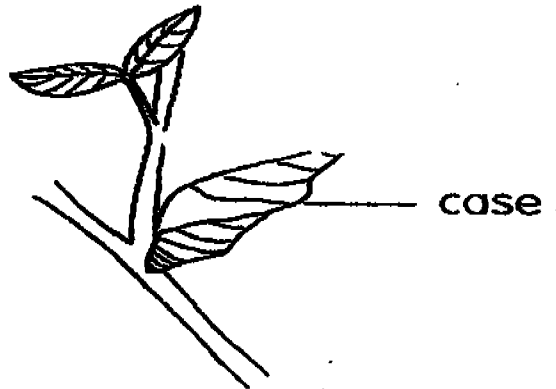
4. Which one of the following items is made from a material different from the others?
 - (1) Envelope.
 - (2) Mineral water bottle.
 - (3) Writing pad.
 - (4) One-dollar note

5. You are required to choose a material to make swimming goggles. Which one of the following characteristics would be the most important?
 - (1) Colourful.
 - (2) Hard.
 - (3) Shiny surface.
 - (4) Transparent.

6. The nymph of a cockroach looks just like the adult but it is smaller and does not have _____.

- (1) eyes
- (2) antenna
- (3) wings
- (4) hind legs

7.



Which one of the following animals will come out from the case shown in the picture above?

- (1) caterpillar
- (2) dragonfly
- (3) butterfly
- (4) pupa

8. Which of the following is not one of our sense organs?

- (1) Tongue
- (2) Teeth
- (3) Skin
- (4) Ear

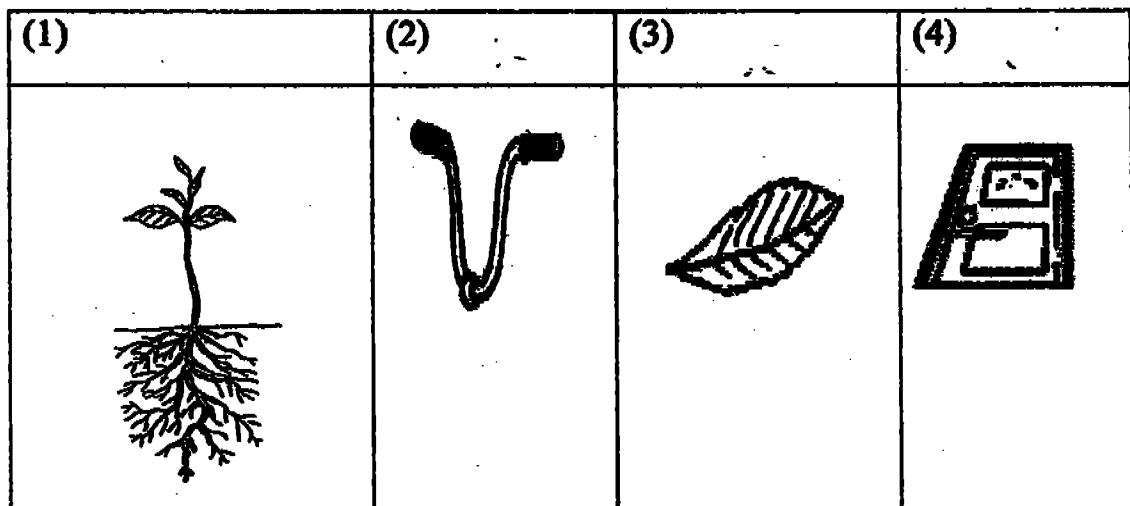
9. Study the table below carefully. The two groups of animals listed in the table are grouped according to a certain characteristic.

Group A	Group B
Cow	Salmon
Guppy	Snake
Whale	Butterfly
Rat	Horse

Which one of the animals in Group B is wrongly classified?

- (1) Salmon
- (2) Snake
- (3) Butterfly
- (4) Horse

10. Which picture shows a complex system?



11. Bala was blindfolded and asked to identify an object.

Which one of the following is a possible statement made by him?

- (1) It is round and blue.
- (2) It has a fragrant smell, red petals and green leaves.
- (3) It is juicy and has orange coloured flesh.
- (4) It is rough and rectangular in shape.

12. Which of the following activities makes use of two sense organs at one time?

- (1) Touching a hot kettle.
- (2) Watching television
- (3) Listening to the radio.
- (4) Reading the newspaper

13. Which sense organ does not match what it can sense?

	Senses Organs	Sense
(1)	Eyes	Sight
(2)	Mouth	Taste
(3)	Ears	Hear
(4)	Skin	Touch

14. Which statement about chlorophyll is true?

- (1) It can be found in animals that are green.
- (2) It is used to absorb water.
- (3) It helps plants to make food..
- (4) It makes flowers red.

15. 4 pupils wrote down examples of living things that live on land.

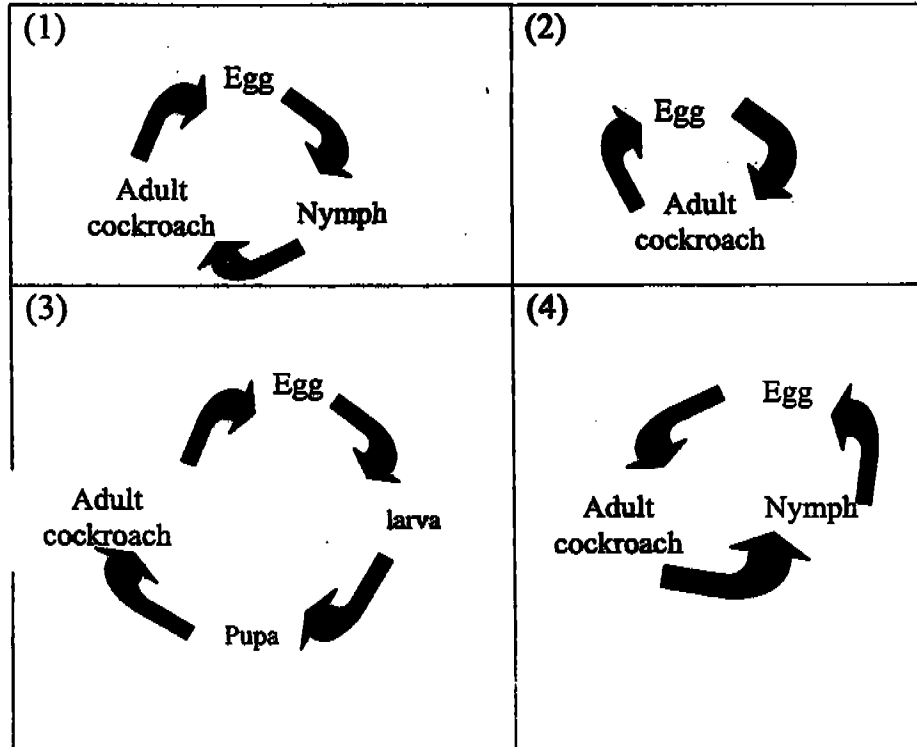
Who has all the correct answer?

- (1) Alex: Hibiscus plant, Goldfish, Water lily
- (2) Limin: Banana plant, Dog, Coconut tree
- (3) Barry: Hydrilla, Tadpole, Crocodile
- (4) Ali: Rose plant, Rain tree, Water hyacinth.

16. Which of the following animals have a three-stage life cycle?

- (A) Butterfly
 - (B) Frog
 - (C) Chicken
- (1) A and B
 - (2) A and C
 - (3) B and C
 - (4) All of the above

17. Which of the diagrams shows the life cycle of a cockroach?



18. A hen sitting on an egg provides _____ to the developing chick.

- (1) water
- (2) warmth
- (3) food
- (4) air

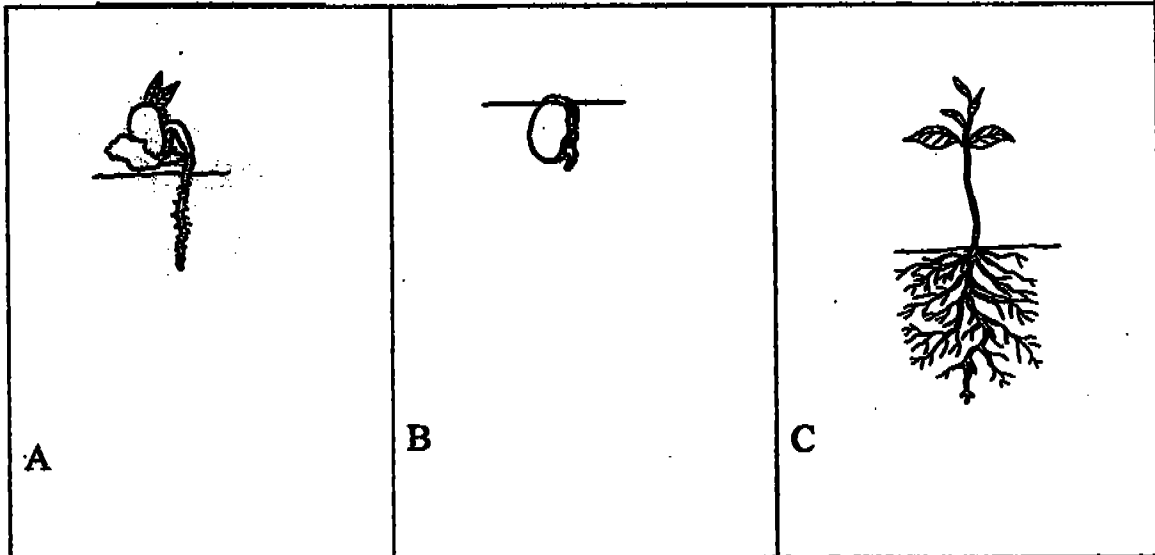
19. When a seed is grown, which part of the plant will grow first?

- (1) leaves
- (2) shoots
- (3) roots
- (4) flowers

20. Where does the seedling get its food?

- (1) It gets from the flowers.
- (2) It gets its food from the seed.
- (3) It make its own food.
- (4) It gets food from the fruits.

21. The correct stages showing the growth of a green bean seed are



- (1) C ,A ,B
- (2) A, B, C
- (3) B, A ,C
- (4) A, C ,B

22. Which one of the following statement is true about all living things?

They _____.

- (1) can move by themselves
- (2) will not die
- (3) can make food
- (4) can live in dark places

23.



In what way are the two animals alike?

- (1) They are both animal eaters;
- (2) They are both plant eaters..
- (3) They have hair as their outer body covering
- (4) They live in jungle..

24. The picture below shows an office chair. We can still sit on it if

_____.



- (1) it has a missing leg.
- (2) the seat is missing
- (3) the back rest is damaged
- (4) one roller is missing

25. Which animal has a shell as its outer body covering?

- (1) Crab ✓
- (2) Goldfish ✗
- (3) Crocodile ✗
- (4) Lizard ✗

(1)

Section B : (10 x 2 marks)

Fill in the blanks with the following helping words. You may only use each word once.

feathers	spiny anteater	hydrilla	kiwi	wood
caterpillar	die	scales	cockroach	guppy
beetle	sight	chick	pupa	hearing
bat	steel	seedling	four	shell

26. Most mammals give birth to their young except for the platypus and the

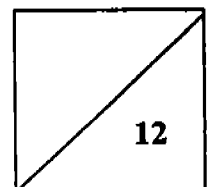
27. The _____ is a bird that cannot fly because its wings are very small.

28. The larva of a butterfly is also known as the _____.

29. A _____ has scales as its outer body covering.

30. The young of a _____ looks different from its parents.

31. A young plant is called a _____.



32. Peter uses his sense of _____ when listening to the news on the radio.

33. An example of a water plant is _____.

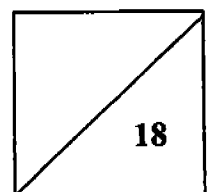
34. Sewing needles are made from _____ because they are strong and do not rust.

35. The eggs of a _____ are in an egg case.

Section C : (5 x 2 marks)

Write TRUE or FALSE after each statement.

31. 36	Spiders have bodies that are segmented into 3 parts.	
32. 37	Our skin is one of our sense organs.	
33. 38	Bricks are made from clay.	
34. 39	The pupa of a butterfly feeds on flowers.	
35. 40	An eraser is an example of an object that is being made from material which was once alive.	



Section 2 : (20 marks)

Read the following questions and answer accordingly.

41. The diagrams below show a bat and a parrot.



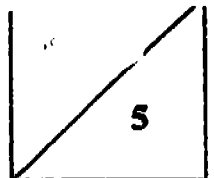
(a) How are they similar in their movement? (1 mark)

(b) List 2 differences between them. (2 marks)

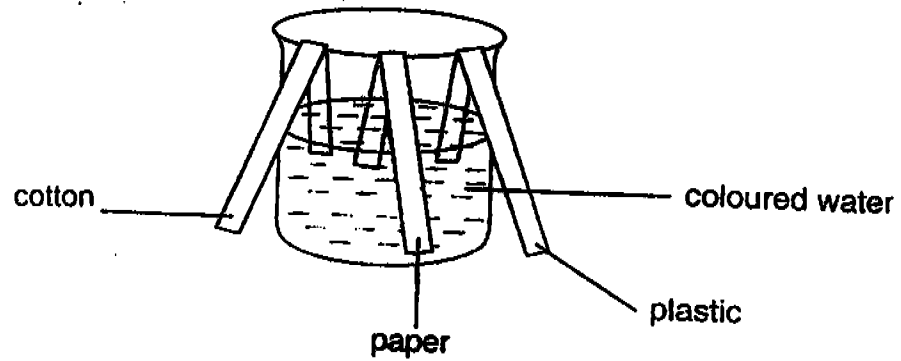
Body covering : _____

Reproduction : _____

(c) The bat is a mammal. Why do we classify it as a mammal? (2 marks)



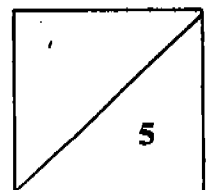
42. Strips of plastic, paper and cotton cloth of equal length were cut and put into a beaker of coloured water as shown below.



- (a) Which materials would absorb the coloured water? (2 marks)

- (b) Based on the result of the experiment, which of the three materials will you choose to make a camping tent? (1 mark)

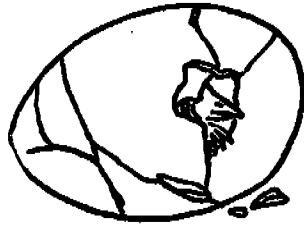
- (c) Why do you choose the material in (b)? (2 marks)

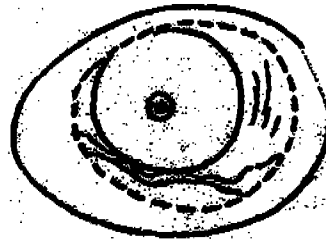


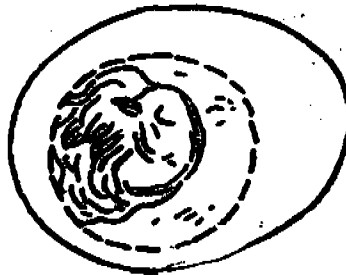
43. (a) Write the numbers 1 to 5 in the boxes to show the development of a chick. (2 marks)

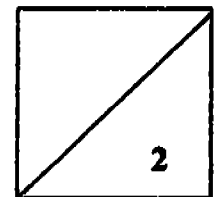








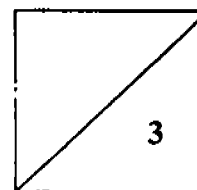




(b) When a chick hatches from an egg, the egg yolk and the egg white are no longer there. What do you think has happened to them?

(2 marks)

(c) How long does it take for an egg to hatch into a chick? (1 mark)



44. Joe was walking near a beach. He saw children playing together. They seemed to be happy from their laughter. As he was walking by, he could smell the fresh salt water from the sea. He decided to enjoy the breeze. Before that, he bought a chocolate flavoured ice cream. He looked for the nearest bench. He felt it to ensure that it was clean. He sat down to enjoy his ice-cream.

Identify one observation which he made by using his sense of :

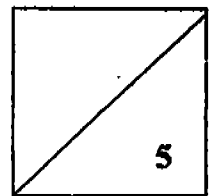
(a) Touch
_____ (1m)

(b) Taste
_____ (1m)

(c) Smell
_____ (1m)

(d) Hearing
_____ (1m)

(e) Sight
_____ (1m)



CA2

- | | | |
|-------|--|----------------------------|
| 1) 1 | 26) spiny anteater | 41) a) Both of them fly. |
| 2) 4 | 27) chick | b) Hair, feather |
| 3) 2 | 28) caterpillar | Give birth, lay eggs |
| 4) 2 | 29) guppy | c) It is because all |
| 5) 4 | 30) beetle | mammal gives birth |
| 6) 3 | 31) seedling | and has hair on their |
| 7) 3 | 32) hearing | body. |
| 8) 2 | 33) hydrilla | 42) a) Paper and cotton |
| 9) 4 | 34) steel | would absorb tje |
| 10) 1 | 35) cockroach | coloured water. |
| 11) 4 | 36) False | b) I will choose plastic. |
| 12) 2 | 37) True | c) It is waterproof. |
| 13) 2 | 38) True | 43) a) |
| 14) 3 | 39) False | 5 |
| 15) 2 | 40) True | 2 |
| 16) 3 | | 4 |
| 17) 1 | | 1 |
| 18) 2 | | 3 |
| 19) 3 | | b) The chick has eaten it. |
| 20) 2 | | c) It takes 21 days for an |
| 21) 3 | | egg to hatch. |
| 22) 1 | 44) a) He felt the bench to ensure that it was clean | |
| 23) 3 | b) He bought a chocolate flavoured ice cream. | |
| 24) 3 | c) He could smell the fresh salt water from the | |
| 25) 1 | sea. | |
| | d) He could hear the children laughter. | |
| | e) He saw children playing together. | |