

MAHA BODHI SCHOOL
2004 CONTINUAL ASSESSMENT 1
SCIENCE

CA1

NAME: _____ ()

MARKS: _____ / 50

CLASS: PRIMARY 3 ()

DATE: 4 MARCH 2004

DURATION: 1 HR 15 MIN (Part I and II)

Part I: (30 marks)

For each question from 1 to 15, four options are given. One of them is the correct answer.

Make your choice (1, 2, 3 or 4). Shade the correct answer (1, 2, 3 or 4) on the Optical Answer Sheet.

1. Which one of the following statements about plants is NOT true?

- (1) They need air.
- (2) They live forever.
- (3) They need sunlight to survive.
- (4) They respond to changes around them. ()

2. Rann is an animal.

- It eats insects.
- It lays eggs.
- It lives on land and in water.

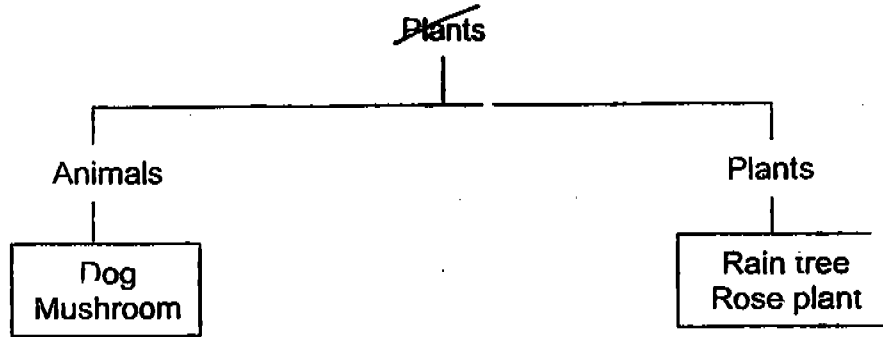
Which animal is Rann most likely to be?

- (1) Frog
- (2) Lizard
- (3) Mosquito
- (4) Crocodile ()

3. Which one of the following cannot move by itself?

- (1) Rock
- (2) Tiger
- (3) Hibiscus
- (4) Cockroach ()

4.

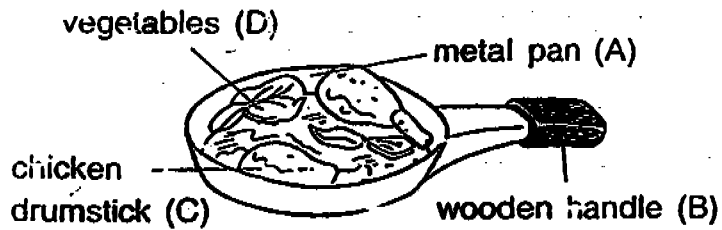


Which one of the following is grouped wrongly?

- (1) Dog
- (2) Rain tree
- (3) Mushroom
- (4) Rose plant

()

5. Look at the diagram below.

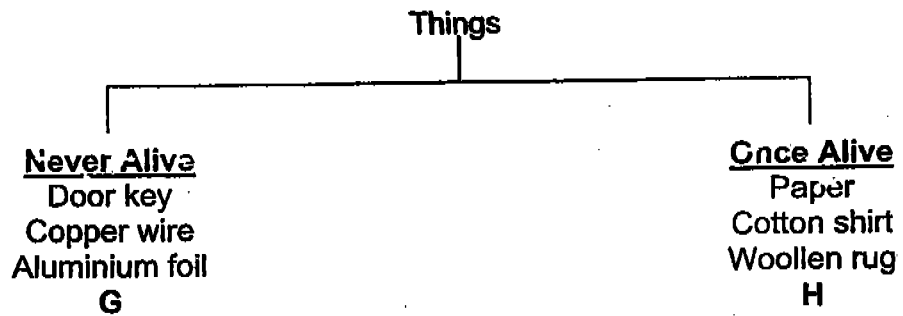


Which of the labelled parts were once alive?

- (1) A and B only
- (2) C and D only
- (3) B, C and D only
- (4) A, B, C and D

()

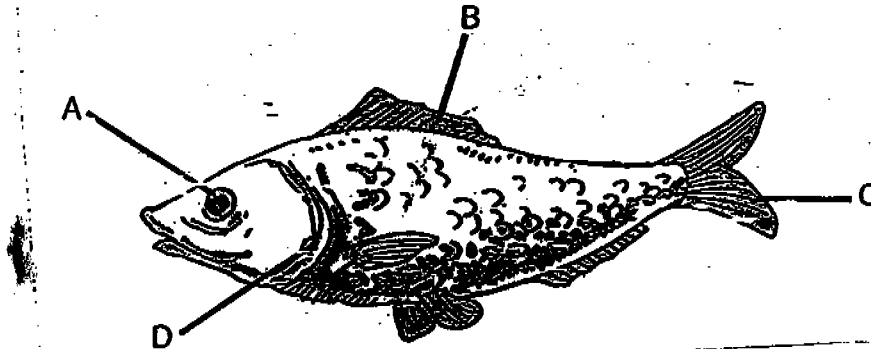
6. The following objects are classified according to whether they are never alive or once alive.



Which list correctly shows what G and H could be?

	G	H
(1)	Plastic bag	Wooden bench
(2)	Feather duster	Car tyre
(3)	Rubber band	Cotton thread
(4)	Stapler	Thumbtack

7.



In the fish shown above, part _____ and part _____ are used for movement.

- (1) A and B
 (2) B and C
 (3) C and D
 (4) D and A

8. Study the 2 groups of animals listed below.

Group M	Group N
Ant	Leopard
Butterfly	Polar Bear
Grasshopper	Whale

Which of the following sets are suitable headings for Group M and Group N?

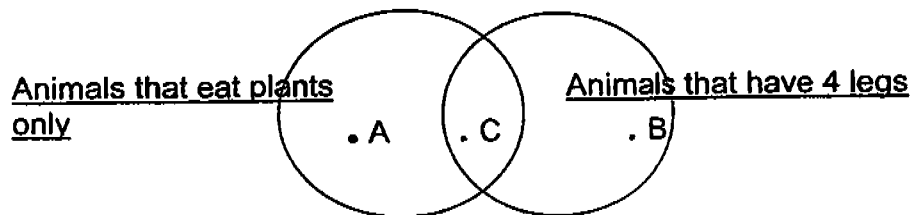
	Group M	Group N
A	Insects	Mammals
B	Land Animals	Sea Animals
C	Small Animals	Big Animals

- (1) A and B only
 (2) A and C only
 (3) B and C only
 (4) A, B and C ()

9. Jack reads up on 4 animals, bat, goat, sheep and turkey. Which one of the animals does not have the same type of body covering as the others?

- (1) Bat
 (2) Goat
 (3) Sheep
 (4) Turkey ()

10. Study the Venn Diagram below.



Which animal could 'C' be?

- (1) Pig
 (2) Frog
 (3) Lamb
 (4) Cheetah ()

11. Which one of the following statements about mammals is true?

- (1) Most mammals lay eggs.
- (2) All mammals live on land.
- (3) All mammals have hair on their bodies.
- (4) Only some mammals look like their parents when they are young.

()

12. Lifang shone a torch at an earthworm. It crawls away immediately. This shows that the earthworm responds negatively to _____.

- (1) air
- (2) light
- (3) touch
- (4) water

()

13. The animals in the table below have been grouped according to the types of body coverings they have.

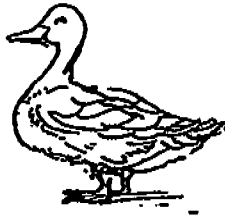
Group	Animals
A	Bear, Giraffe
B	Prawn, Turtle
C	Crocodile, Snake
D	Sparrow, Penguin

Which group should 'elephant' belong to?

- (1) A
- (2) B
- (3) C
- (4) D

()

14. Study the 4 animals given below carefully.



Duck



Bee



Cockroach



Beetle

We do not put the duck in the same group as the other animals because the duck

- (1) has eyes
- (2) lays eggs
- (3) has wings
- (4) has two legs only

()

15 Study the classification table below.

Group A	Group B	Group C
Man	Goat	Lion
Pig	Cow	Tiger

The animals are grouped according to _____

- (1) the way they move
- (2) the place they live in
- (3) the type of food they eat
- (4) the type of body covering they have

()

----- End of Part I -----

MAHA BODHI SCHOOL
2004 CONTINUAL ASSESSMENT 1
SCIENCE

NAME: _____ ()

MARKS: _____ / 50

CLASS : P3 ()

DATE. 4 MARCH 2004

DURATION: 1 HR 15 MIN
(Part I and II)

PARENT'S SIGNATURE:

Part II: (20 marks)

Write your answers to questions 16 to 23 in this script.

16. Write True or False in the brackets next to each statement.

- (i) Non-living things do not reproduce. ()
- (ii) Animals need only air and water to survive. ()
- (iii) Emus and penguins have wings but cannot fly. ()
- (iv) Clouds are living things as they move by themselves. ()

[2]

17. Each of the following sentences tells us something that living things can do.

Match the sentences in group A to those in group B.

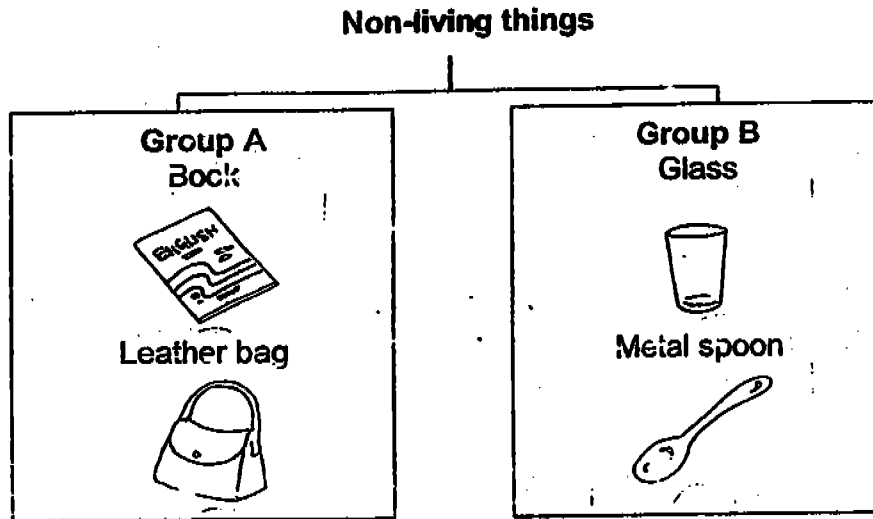
A

B

- | | |
|--|---|
| (i) An apple seed becomes an apple tree. | (i) Living things can move about. |
| (ii) A swallow flies in the sky. | (ii) Living things can grow. |
| (iii) A mimosa plant closes its leaves when Jean brushes against it. | (iii) Living things can respond to touch. |

[2]

18. Study the classification diagram below.



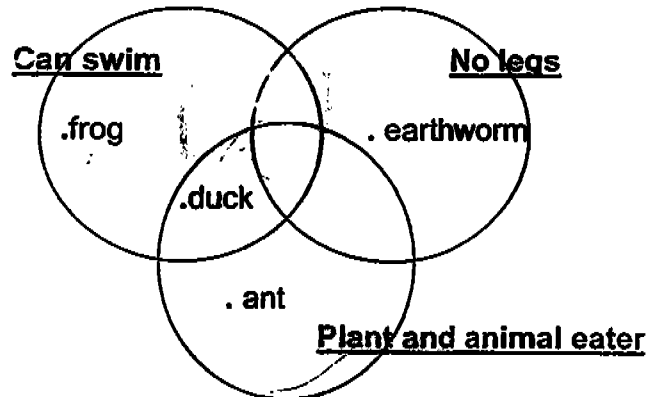
Give a suitable heading for each group of the non-living things above.

(i) Group A : _____

(ii) Group B : _____

[2]

19.



Based on the diagram above, state two characteristics of the duck.

(i) _____

(ii) _____

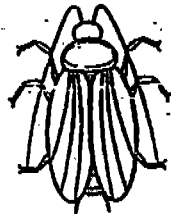
20. Fill in the blanks using the helping words given below. Each word can only be used once.

Birds	Fishes	Insects	Mammals
-------	--------	---------	---------

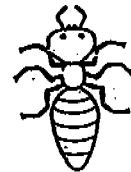
- (i) _____ can survive only in water.
(ii) _____ lay eggs with hard shells.
(iii) _____ feed their young with milk.
(v) _____ have 3 body parts, the head, the thorax and the abdomen.

[2]

- 21 Based on the diagrams below, compare Animal A and Animal B.
(Do NOT compare size, shape and colour.)



Animal A



Animal B

- (a) State one way in which they are similar.

- (b) State one way in which they are different.

[2]

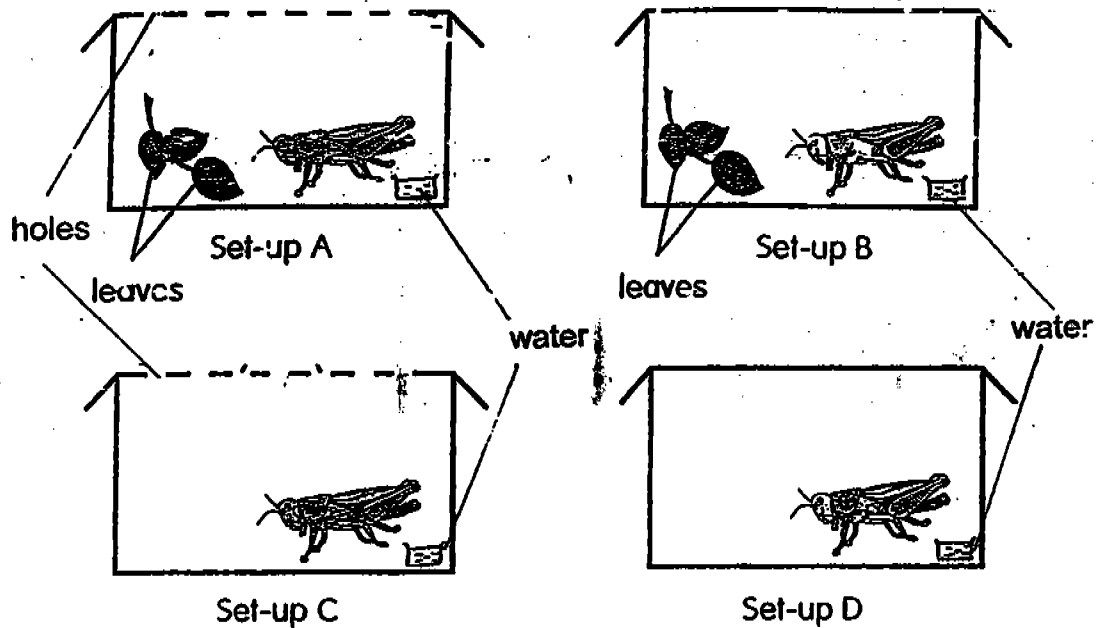
22. Group the following animals according to where they live.

Tadpole	Duck	Dolphin	Turtle	Lizard	Gorilla
---------	------	---------	--------	--------	---------

Live on land	Live in water	Live on land and in water

[2]

23. Mrs Lee set up the following experiment in the classroom and left the 4 similar grasshoppers untouched for one week.



(a) In which set-up(s) would the grasshopper survive after one week?

(b) Why?

[2]

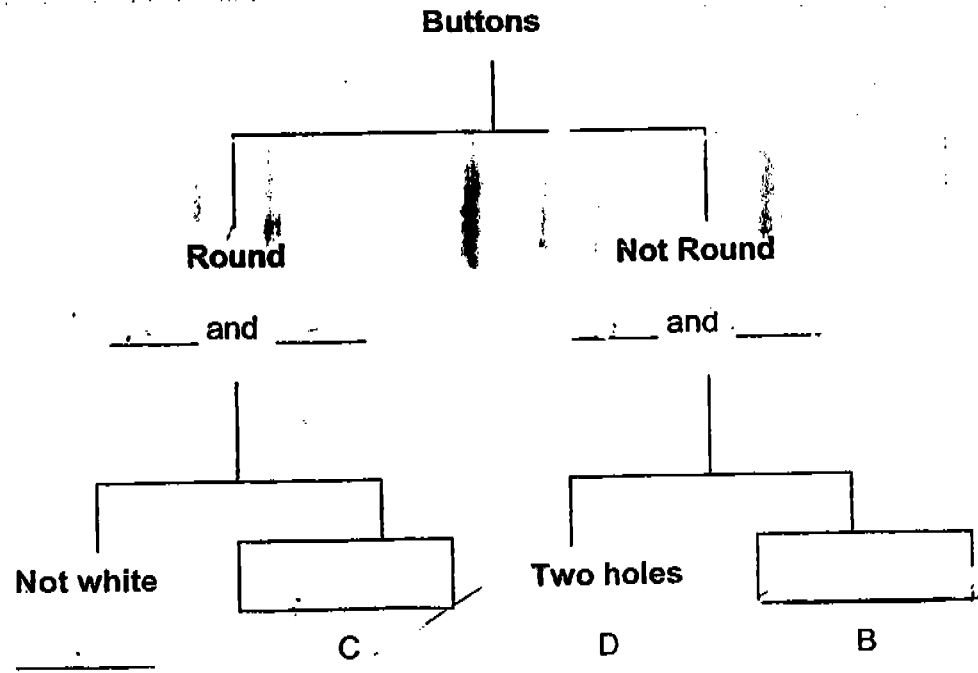
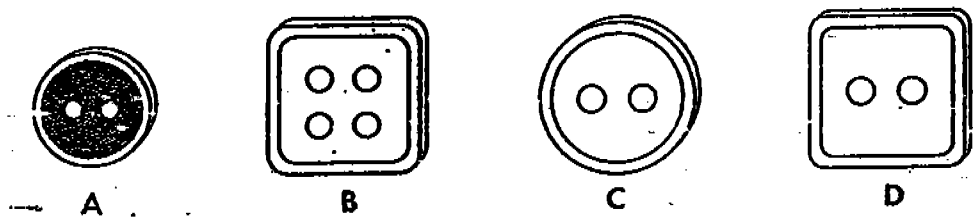
24. Study the list of animals given below and complete the statement.

Ant	Cat	Elephant	Leopard	Rat
-----	-----	----------	---------	-----

Which two animals have similar body shape?

1]

25. Classify the four buttons using the classification chart below.
Write the letters of the buttons, (A, B, C and D) on the lines, and suitable headings in the boxes provided. Each letter could be used more than once.






[2]

----- End of Paper -----

MAHA BODHI SCHOOL
2004 CONTINUAL ASSESSMENT 1
PRIMARY 3 SCIENCE

CA1

- 1) 2 16) i) T ii) F iii) T iv) F
- 2) 1 17) i) 
- 3) 1 ii) 
- 4) 3 iii) 
- 5) 3 18) i) Once alive
- 6) 1 ii) Never alive
- 7) 2 19) i) The duck can swim.
- 8) 2 ii) The duck is an animal eater and a plant eater.
- 9) 4
- 10) 3 20) i) Fishes
- 11) 3 ii) Birds
- 12) 2 iii) Mammals
- 13) 1 iv) Insects
- 14) 4 21) a) They have six legs.
- 15) 3 b) Animal A has wings but Animal B does not.
- 22) Gorilla Tadpole Turtle
- Lizard Dolphin Duck
- 23) a) Set-up A
- b) It has air, food and water.
- 24) Leopard and the cat has similar body shape.
- 25)

A

C

B

D

white

four holes

A