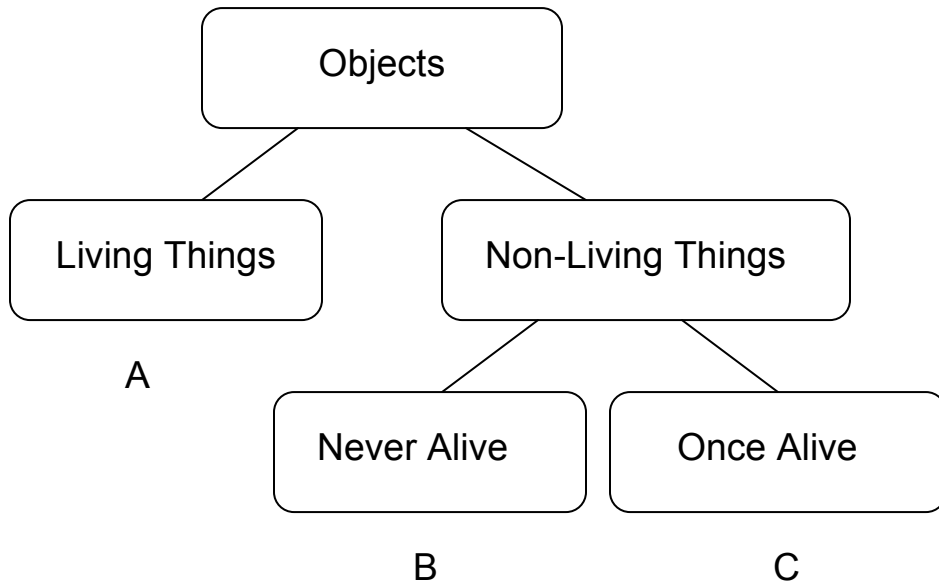


**Primary Three
Science
Continual Assessment One**

Section A

I. Choose the best option and write its number (1, 2, 3 or 4) in the boxes provided. (20 X 2 Marks)

1. Look at the diagram below. Which one of the following sets of objects fits A, B and C?



Sets	A	B	C
1.	fan	tiger	paper
2.	lion	swan	book
3.	lion	key	book
4.	nail	kettle	key

2. Look at the list below. Which of the followings in the list is/are non-living things found in an aquarium?

- a) pebbles
- b) guppy
- c) water plant
- d) heater
- e) air pump
- f) goldfish

- (1) a, c and d
- (2) a, d and e
- (3) b, d and e
- (4) a, b, d and e

3. Living things respond to changes in their environment. Which of the following statements show this?

- a) When I stepped on a mimosa plant accidentally, its leaves closed almost immediately.
- b) Pamela cried when her Mother hit her with a cane.
- c) A hungry wolf smelt a prey and search for it in the woods.

- (1) a and b
- (2) b and c
- (3) a and c
- (4) a, b and c

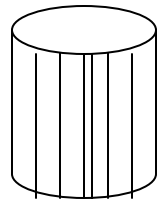
4. Study the table below. Identify **A** and **B**.

A	B
pencil	orchid
coin box	guppy
dried lily	dog
car	lizard

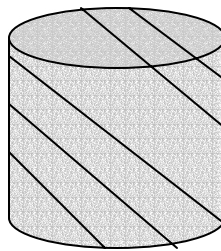
- A**
- (1) objects made of metal
 - (2) collectors' items
 - (3) non-living things
 - (4) things which were never alive

- B**
- objects made of silk
 - animals as pets
 - living things
 - things which were once alive

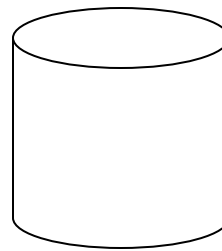
Study the diagram below. Answer Questions 5 and 6.



Cylinder X



Cylinder Y



Cylinder Z

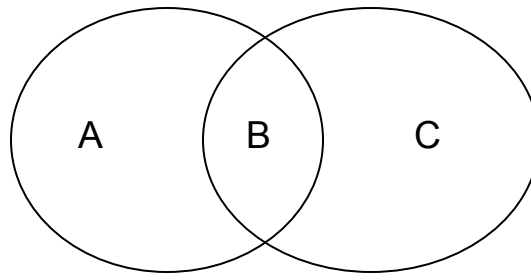
5. Cylinder X is different from Cylinder Z in _____.

- (1) size, shape and colour
- (2) size, pattern and colour
- (3) size, texture and pattern
- (4) size, shape and pattern

6. Cylinder Y and Z are similar in _____.

- (1) colour only
- (2) size only
- (3) pattern only
- (4) size and shape

Study the Venn diagram below. Answer Questions 7 and 8.



Sense of smell

Sense of sight

7. Which of the following activities cannot be grouped under A?

- a) A dog dug up a corpse at the backyard of a deserted house.
- b) A person putting on a new fragrance of perfume.
- c) A blind man crossing the road with a walking stick.

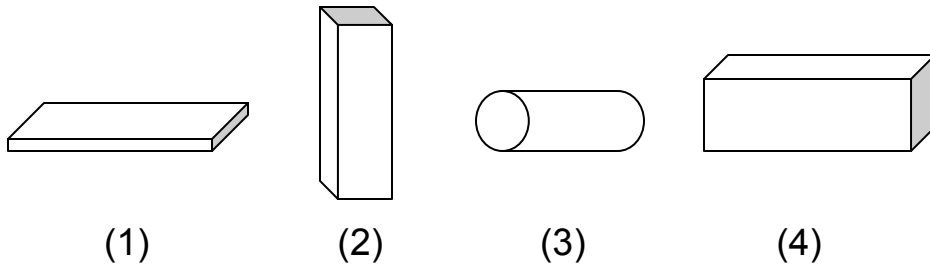
- (1) a only
- (2) c only
- (3) a and c
- (4) b and c

8. Which of the following activities can be grouped under 'B'?

- a) Buying a new blouse for Chinese New Year.
- b) Choosing a durian.
- c) Choosing a cookery book.

- (1) a only
- (2) b only
- (3) c only
- (4) b and c

9. Which of the following objects is different from the rest?



10. Study the table below. The different fruits are grouped according to their _____.

Group X	Group Y
mango	pineapple
pear	rambutan
banana	durian

- (1) colour
- (2) surface texture
- (3) size
- (4) smell

11. A guppy has all the following characteristics except that

_____.

- (1) it has lungs for breathing
- (2) it gives birth to its young
- (3) it has gills for breathing
- (4) it has fins for swimming

12. Look at the table below. Which pair of animals is grouped incorrectly?

	Group X	Group Y
(1)	elephant	carp
(2)	tiger	clownfish
(3)	monkey	angelfish
(4)	crocodile	penguin

13. A whale is similar to a seal because _____.

- (1) they have scales
- (2) they lay eggs
- (3) they breathe through lungs
- (4) they cannot live on land

14. Which group of animals does the platypus belongs to?

- (1) Mammals
- (2) Fish
- (3) Insects
- (4) Plants

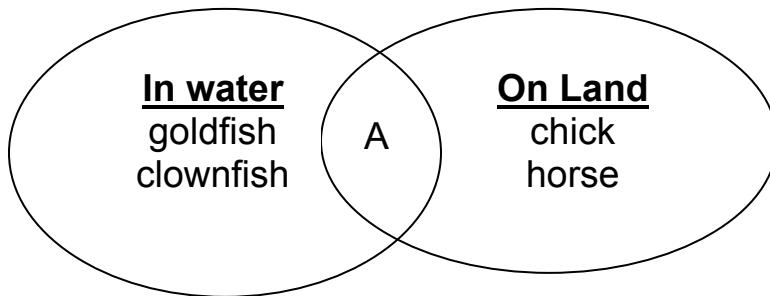
15. Fish have scales on their bodies because these scales

_____.

- a) make the fish look beautiful
- b) allow the fish to swim faster
- c) allow the fish to find food easier
- d) protect the body of the fish

- (1) a and b
- (2) b and c
- (3) a and d
- (4) d only

16. Study the Venn diagram below carefully.



Which one of the followings best fits 'A'?

- (1) giraffe
- (2) turtle
- (3) buffalo
- (4) eagle

17. Choose the correct statements that are true of a mammal.

- a) It has hair on its body.
- b) It gives birth to its young.
- c) It feeds its young with milk.
- d) It has a backbone.

- (1) a and b
- (2) a and d
- (3) a, b and c
- (4) a, b, c and d

18. Choose the correct pair of animals which consists of both an animal eater and a plant eater.

- (1) bear and hen
- (2) crocodile and rat
- (3) koala bear and elephant
- (4) leopard and tiger

Section B

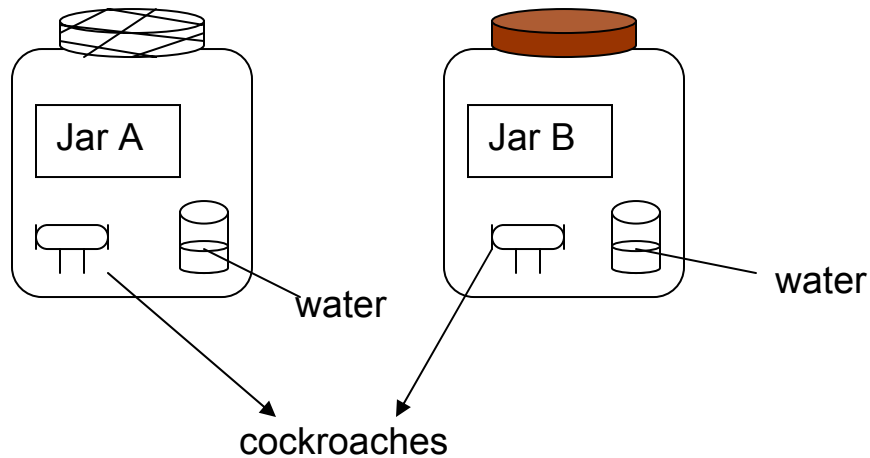
II. Write your answers in the spaces provided. (5 X 2 Marks)

19. What is **one** similarity and difference between the **eagle** and a **bat**? (Please do not compare their colours, sizes and shapes.)

Similarity: _____

Difference: _____

20. Look at the pictures below. A cockroach is placed into Jar A and another cockroach is placed into Jar B on the same day.



a) What will happen to the cockroach in Jar B after a few days?

b) Explain your answer in (a).

21. State **two** reasons why it is important for animals to move about.

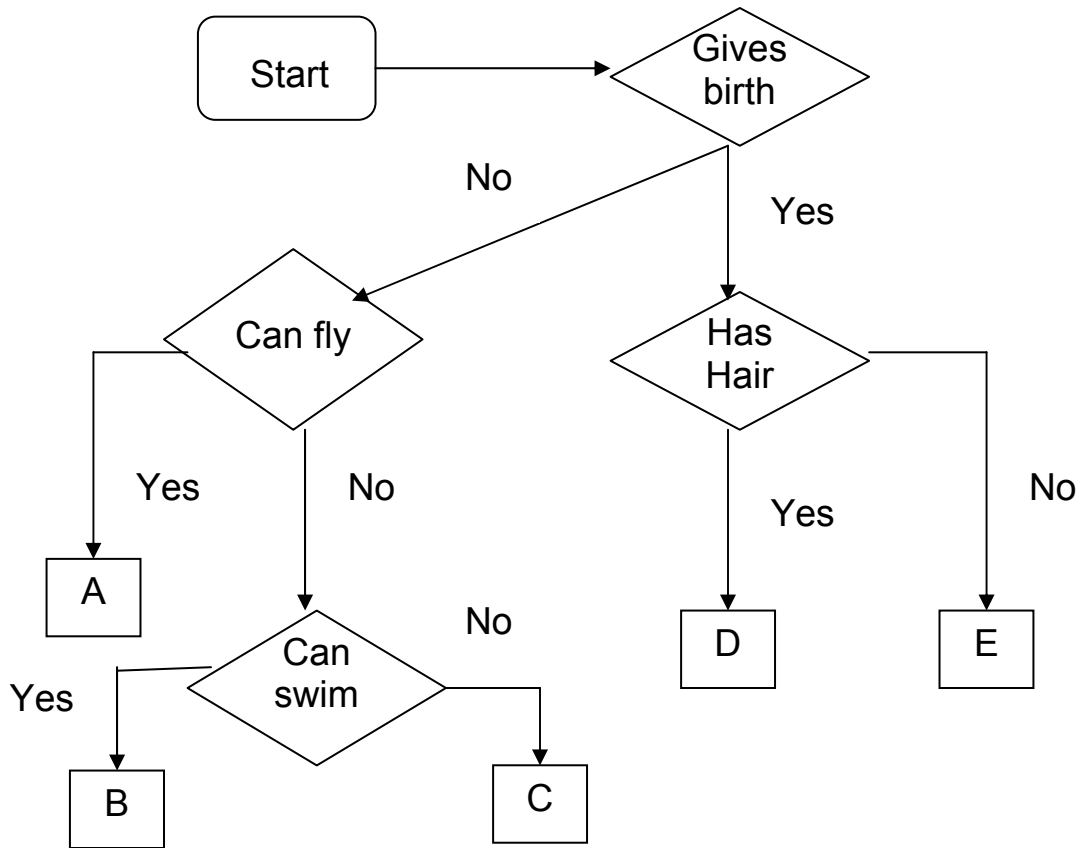
First reason: _____

Second reason: _____

22. Different animals have different kinds of outer coverings.
Write the answers in the spaces provided below.

Animals	Outer coverings
bat	
snake	
polar bear	
crayfish	

23. Study the flowchart below carefully. Choose the correct answers and write them in the spaces provided.



Example: An eagle does not give birth, it lays eggs. It can fly. Therefore it is placed at A.

Choose the answers from this list:
emu, eagle, seahorse, crocodile, monkey

A: eagle

B: _____

C: _____

D: _____

E: _____