

FORM 4

TEXTILES STUDIES

TIME: 1h 30min

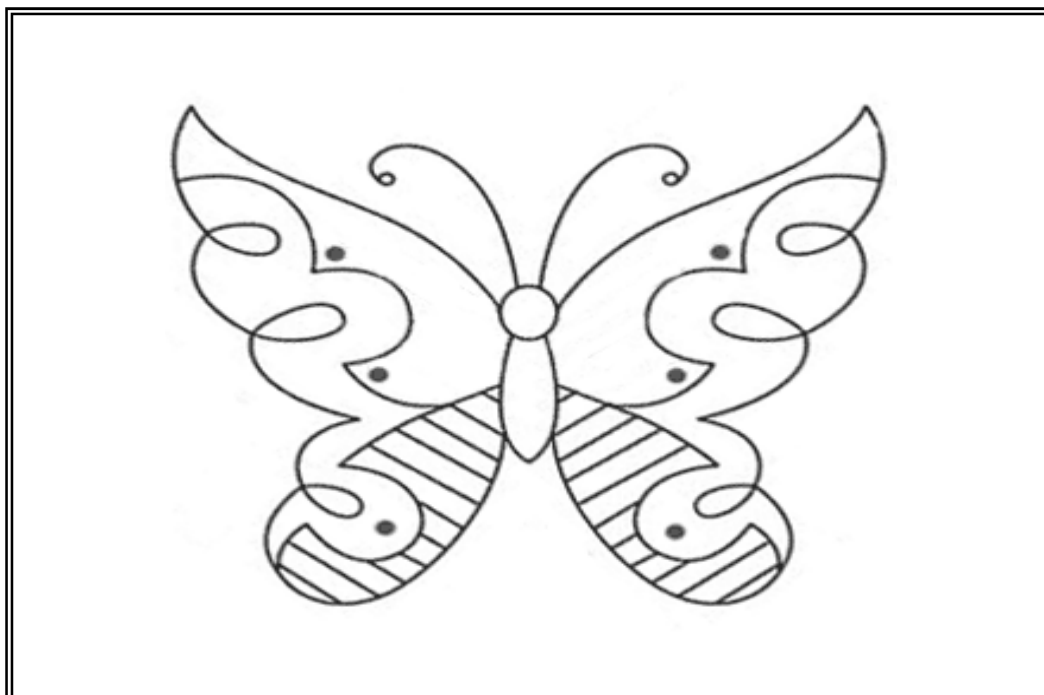
Name: \_\_\_\_\_

Class: \_\_\_\_\_

1. The diagram of the butterfly was originally printed on a fabric chosen for the curtains in a child's room. This room has an empty wall where a fabric collage/wall hanging can be placed to enhance the décor.

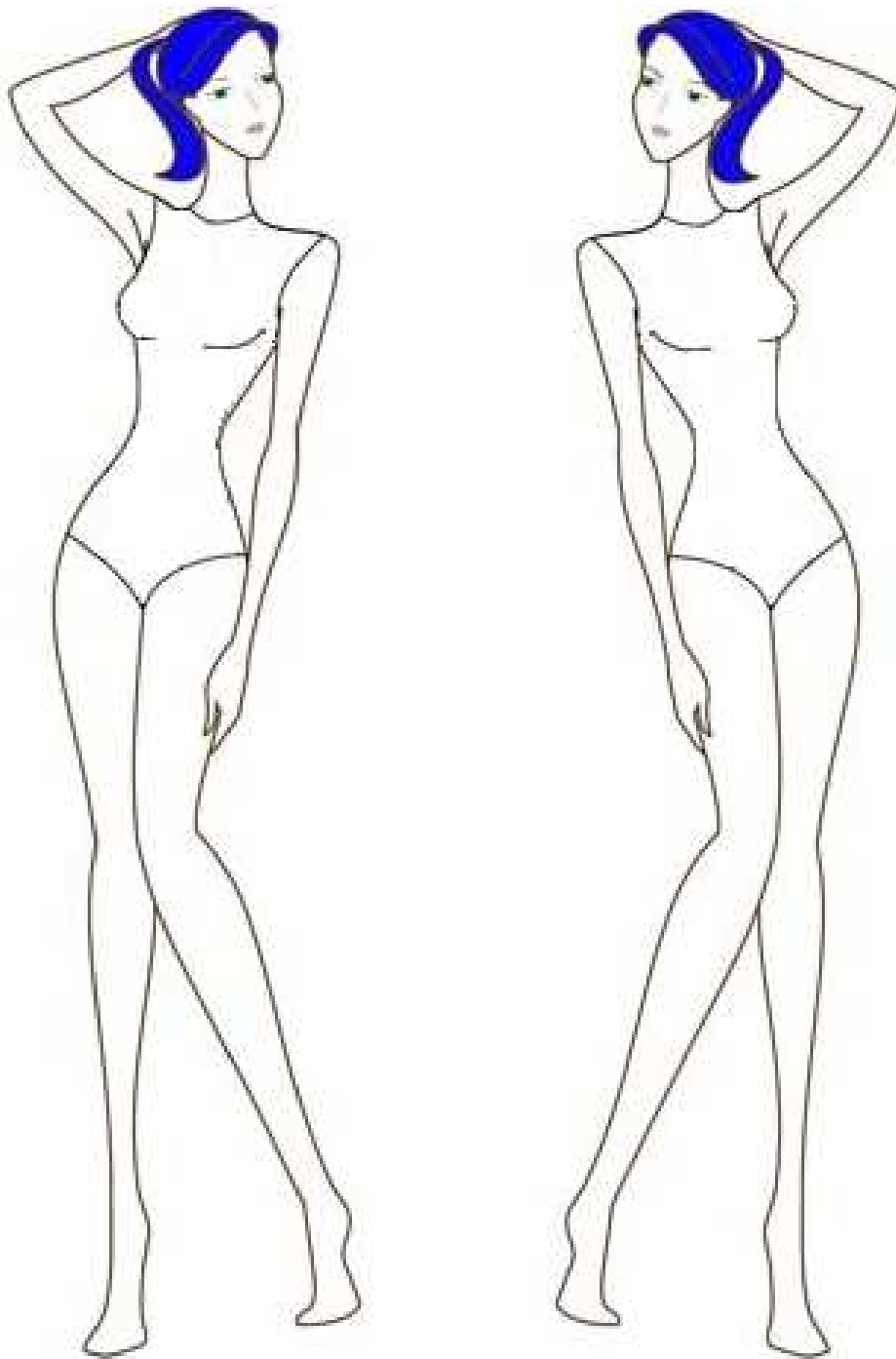
Decorate the design that can be made into a fabric collage. Work in this way:

- Name and draw **four** embroidery stitches that can be used to work the design. (4, 4 marks)
- Identify **one** area in the picture where you can use appliqué and name the fabric chosen to work this area. (*Mark this on the picture below*) (1 mark)  
Name of fabric for appliqué: \_\_\_\_\_ (1 mark)
- Suggest **two** ways in which texture can be added to the fabric collage to avoid a flat result.  
(i) \_\_\_\_\_ (ii) \_\_\_\_\_ (2 marks)
- Create a colour scheme for the fabric collage. (4 marks)
- Suggest **two** decorations that can be added to the butterfly to make it more interesting.  
Draw these on the butterfly design as well.  
(i) \_\_\_\_\_ (ii) \_\_\_\_\_ (2 marks)



- 2a. Using these figure templates, design **two** different tops/blouses to be worn by your friend. (*an example is included to help you*) (3, 3 marks)
- b. Design a trouser to match with each top/blouse. (2, 2 marks)
- c. Describe **three** fashion features of the outfits. (3, 3 marks)
- d. For which occasion would these outfits be useful?

\_\_\_\_\_ (2 marks)



e. The diagram shows the layout of a blouse. Name each pattern piece. An example has for you.

A \_\_\_\_\_

B \_\_\_\_\_

C \_\_\_\_\_

D Back Facing

E \_\_\_\_\_

(4 marks)

f. The fabric for this blouse is single width (115cm).

(i) Mark the fold and the selvages on the diagram.

(2 marks)

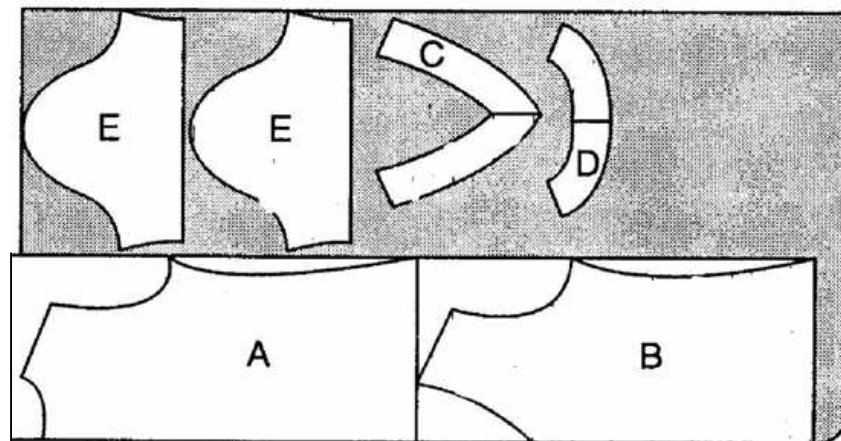
(ii) On **one** of the pattern pieces **E** mark:

- the straight grain,
- seam numbers or notches,
- easing

(3 marks)

g. Name another common width of fabric. \_\_\_\_\_

(1 mark)



h. A cotton/lycra blend was used to make this blouse.

(i) Name **two** properties of this fabric blend.

(i) \_\_\_\_\_ (ii) \_\_\_\_\_

(1, 1 marks)

(ii) Explain **one** advantage of using this fabric blend to make summer tops and shirts.

\_\_\_\_\_  
\_\_\_\_\_ (2 marks)

(iii) Draw a care label showing the symbols for washing, bleaching, drying and ironing this blouse which is made from a **brown cotton/lycra blend**.

--	--	--	--

(4 marks)

3. Read the following information about Lyocell and then answer the questions that follow.

Lyocell is a fabric better known by its brand name Tencel®. It has a soft finish, packs light and is made from cellulose (vegetable matter), or wood pulp. It is noted for its durability and strength, in addition to its eco-friendly manufacturing techniques. Lyocell is made by chipping wood, breaking down the wood fibers with the non-toxic chemical amine oxide, and then placing the material in a spinneret. The spinneret produces long fibers, which are then dried and woven into cloth. In clothing, you'll find lyocell in a number of styles and finishes. Some lyocell clothing looks like denim material, while others approximate the look of suede. Lyocell can also be made to look like wool, cotton, rayon or poly/silk blends. Garments made of lyocell can be more expensive than other manufactured fabrics such as rayon. The fabric is extremely durable, and is perfect for packing for a holiday. It tends not to wrinkle and many forms of it are easy care, and can be machine-washed. Most do require drip-drying, but as improvements in lyocell continue, no doubt manufacturers will attempt to address this issue. Lyocell fabrics are also naturally biodegradable. Manufacturing lyocell is also environmentally sound because less water and energy is used than in the manufacture of other manmade fibers.

a. What is Lyocell made from?

\_\_\_\_\_ (1 mark)

b. Why is lyocell suitable for packing for a holiday? Give **two** reasons.

(i) \_\_\_\_\_

(ii) \_\_\_\_\_ (2, 2 marks)

c. Explain why Lyocell is considered an eco-friendly fibre? Give **two** reasons.

(i) \_\_\_\_\_

(ii) \_\_\_\_\_ (2, 2 marks)

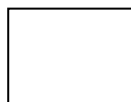
d. What is a biodegradable fibre?

\_\_\_\_\_ (2 marks)

e. An easy care fabric requires little or no \_\_\_\_\_ (2 marks)

f. Lyocell can be made to look like \_\_\_\_\_ (1 mark)

g. Draw the symbol for drip drying clothes.



(1 mark)

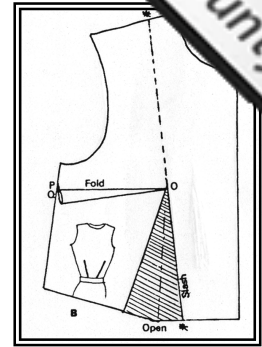
4. The diagram shows how a dart can be transferred from one part of a pattern to another.

a. Explain how the alteration is carried out.

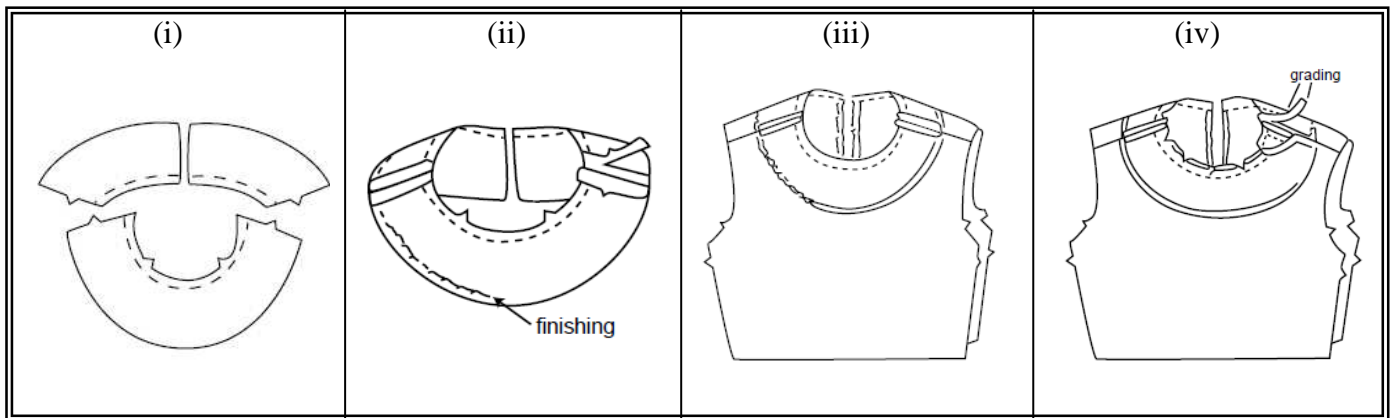
(i) \_\_\_\_\_

(ii) \_\_\_\_\_

(2 marks)



b. Using the diagrams to help you, explain how to make and attach a neckline facing to a blouse.



(i) \_\_\_\_\_

\_\_\_\_\_

(ii) \_\_\_\_\_

\_\_\_\_\_

(iii) \_\_\_\_\_

\_\_\_\_\_

(iv) \_\_\_\_\_

\_\_\_\_\_

(2, 2, 2, 2 marks)

c. Draw a diagram showing the finished facing.

(2 marks)



5. In order to enhance their functional qualities, textile items in the home often require special finishes.

a. Explain the need for these **two** finishes.

(i) Anti-Pilling

---

---

(ii) Anti-Static

---

---

(2, 2 marks)

b. Explain the importance of stating the finish on a care label.

---

---

(2 marks)

c. Detergents and cleaning substances have a considerable effect on the environment.

Name **three** points a consumer must keep in mind when buying laundry products to be more environmentally friendly.

(i) 

---

(ii) 

---

(iii) 

---

(3 marks)

6a. In the box provided below mark the following: Fold, Selvedges, Grain line, Warp, Weft, Bias,

True cross (7 marks)

b. Which is the strongest thread in a piece of woven fabric?

---

 (1 mark)

c. Name **two** uses of crossway strips. (i) 

---

(ii) 

---

 (2 marks)