

**FORM 3** **GEOGRAPHY (OPTION)** **TIME: 1h 30min**

Name: \_\_\_\_\_

Class: \_\_\_\_\_

**Instructions to Candidates**

Answer all questions in the space provided. Write your answers neatly and in good English. Credit will be given for relevant illustrations. The marks for individual questions are shown in round brackets: e.g. (4). There are 9 questions in all. The total mark for this paper is 90.

**Examiner's use only**

Question No.	1	2	3	4	5	6	7	8	9	Written Exam	Fieldwork Report	Total
Max. Mark	12	8	12	10	10	10	10	10	8	90	10	100
Score												

1. Study carefully the OS Map, Map 1 on page 2.

a. Draw the OS Map symbols at the following locations on the map itself.

- (i) 924 560 Church with tower
- (ii) 929 574 Marsh
- (iii) 938 567 Quarry

(6)

b. Mark by using a pencil the following contour lines.

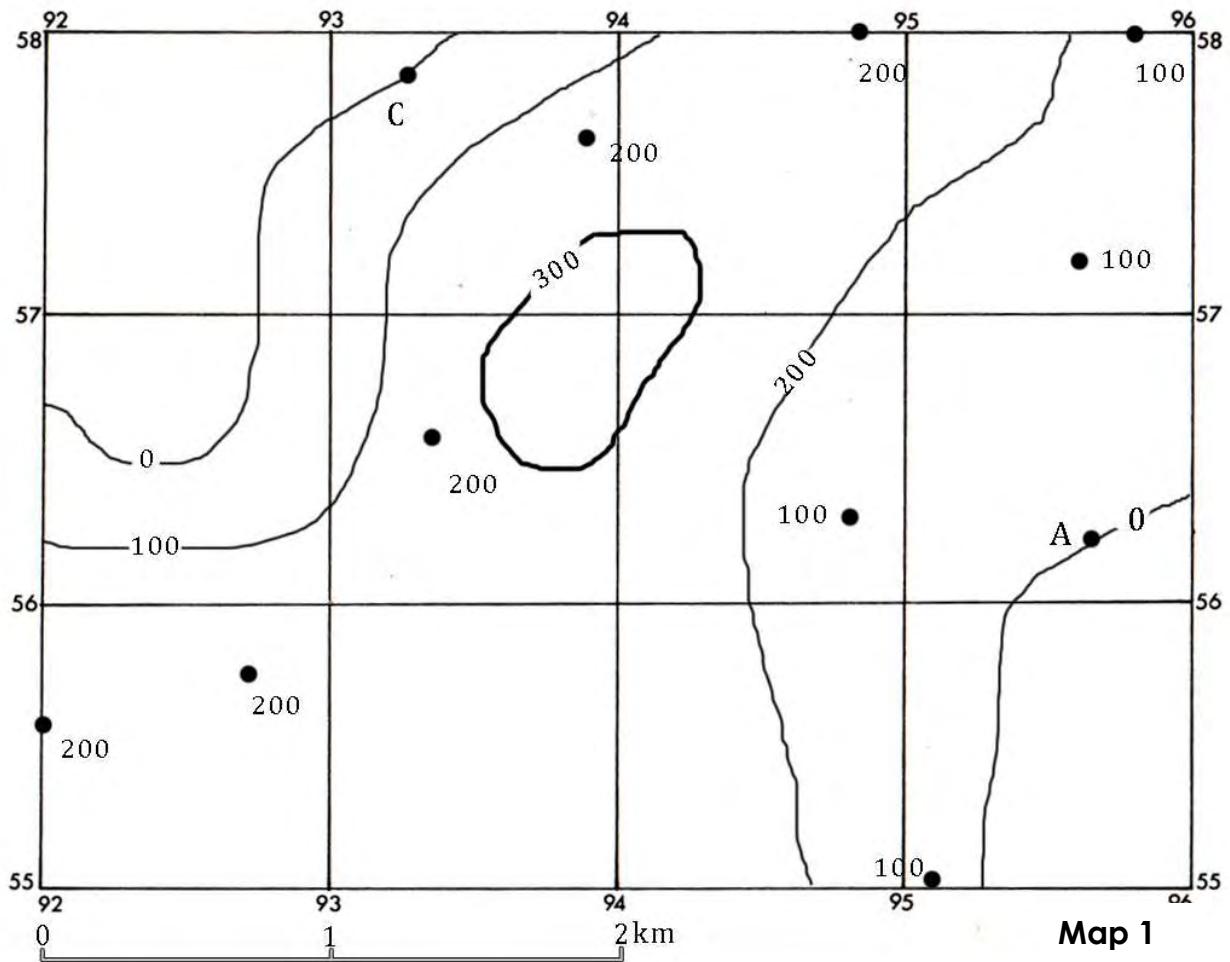
- (i) 200 line contour
- (ii) 100 line contour

(2)

c. Work out the compass direction from A to C.

.....

(1)



- d. Use the linear scale of the map to measure the straight line distance from A to C.

..... (1)

- e. Shade with a brown-pencil the land higher than 200 metres above sea level.

..... (1)

- f. Suppose you are walking northwards from point A, would you be walking uphill or downhill?

..... (1)

2. Study the **world map** (Map 2 on page 4) and then answer the following questions.

- a. Four countries are shaded and numbered **1** to **4** on the world map. Name each country in the table below. Next to each country in the third column, write down the name of the continent in which each country is located.

	Country	Continent
<b>1</b>		
<b>2</b>		
<b>3</b>		
<b>4</b>		

(4)

- b. Name the following major seas numbered **5** and **6** on the map. Name also the ocean in which each sea is found.

	Sea	Ocean
<b>5</b>		
<b>6</b>		

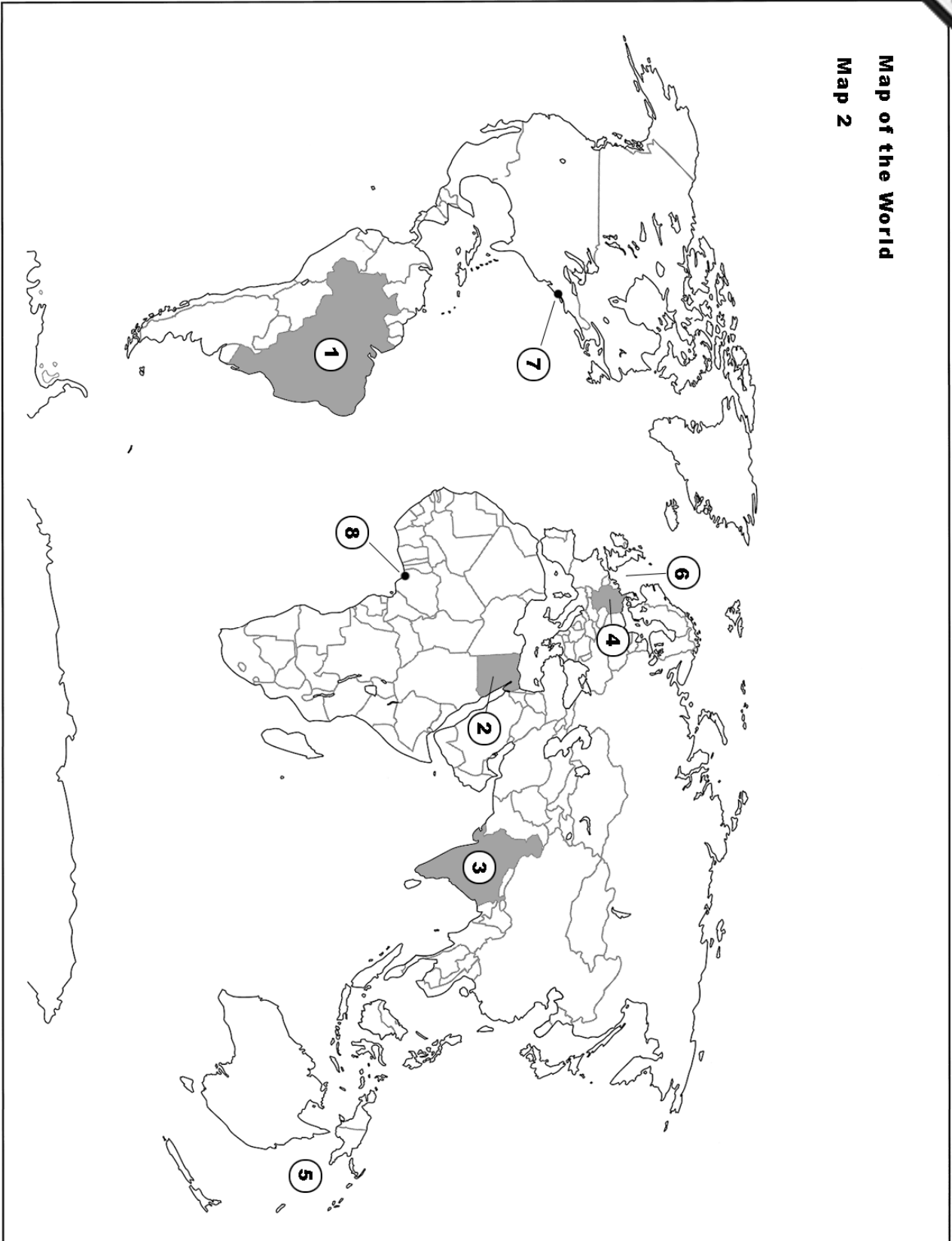
(2)

- c. Cities numbered 7 and 8 on the world map are called mega cities. Name these cities.

	Cities
<b>7</b>	
<b>8</b>	

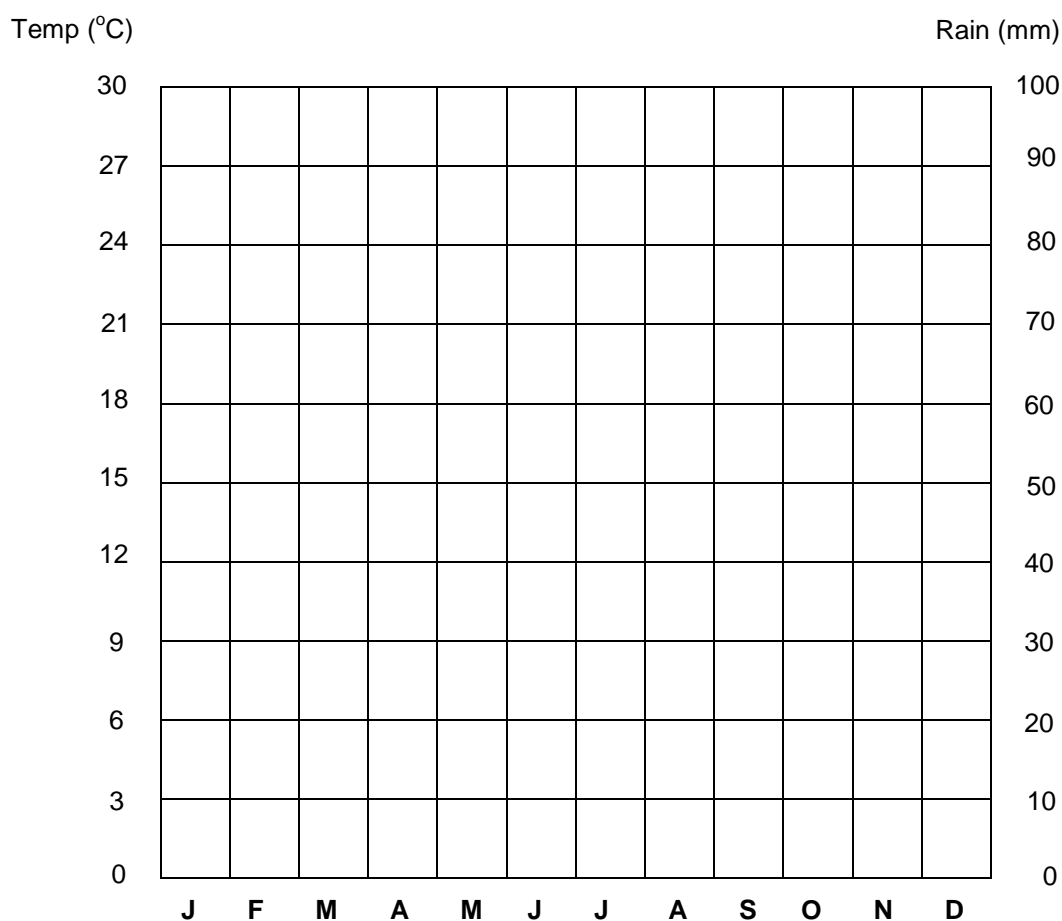
(2)

Map of the World  
Map 2



- 3 a. Use the following data to draw the climate graph in the grid provided below.

	J	F	M	A	M	J	J	A	S	O	N	D
Temp (°C)	9	12	15	18	21	24	26	26	21	15	12	9
Rain (mm)	70	60	30	30	10	10	0	5	20	50	60	80



(6)

- b. By showing all necessary working calculate the:

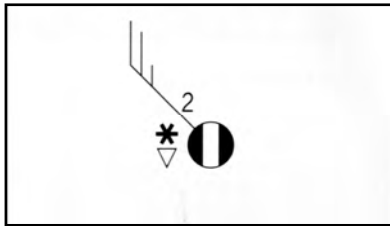
(i) **Total Annual Rainfall;**

(ii) **Mean Annual Temperature;**

(iii) **Mean Annual Range of Temperature.**

(3)

- c. Meteorologists use standard symbols on synoptic charts to provide information about precipitation, cloud cover, wind and temperature.  
Describe the weather conditions at the station shown below.



.....

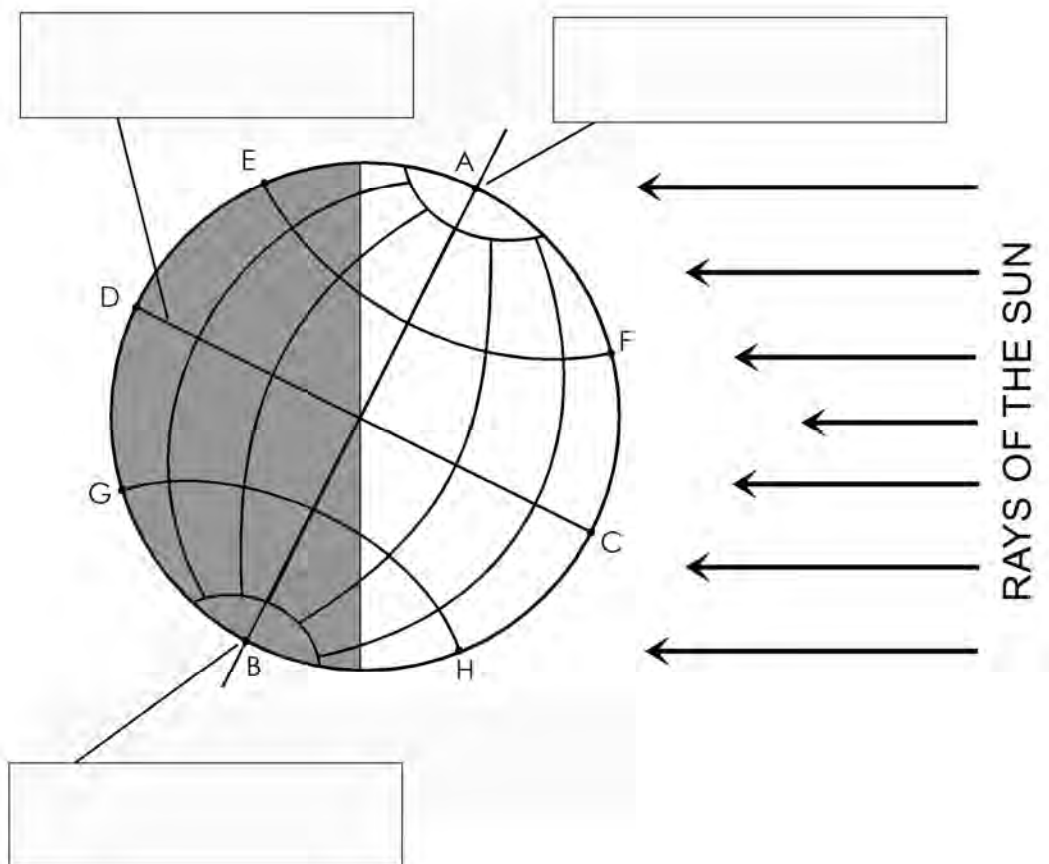
.....

.....

.....

(3)

4. Look carefully at the diagram of the Earth.



- a. Name the following points and lines:

**Point A** .....

**Point B** .....

**Line DC** .....

(3)

- b. Add the following labels in the spaces provided in the diagram.

Equal length of day and night	
	24 hours of daylight
24 hours of darkness	

(3)

- c. On the diagram itself draw an arrow to indicate the direction of the Earth's rotation.

(1)

- d. Which line marked on the diagram shows the Earth's axis?

.....

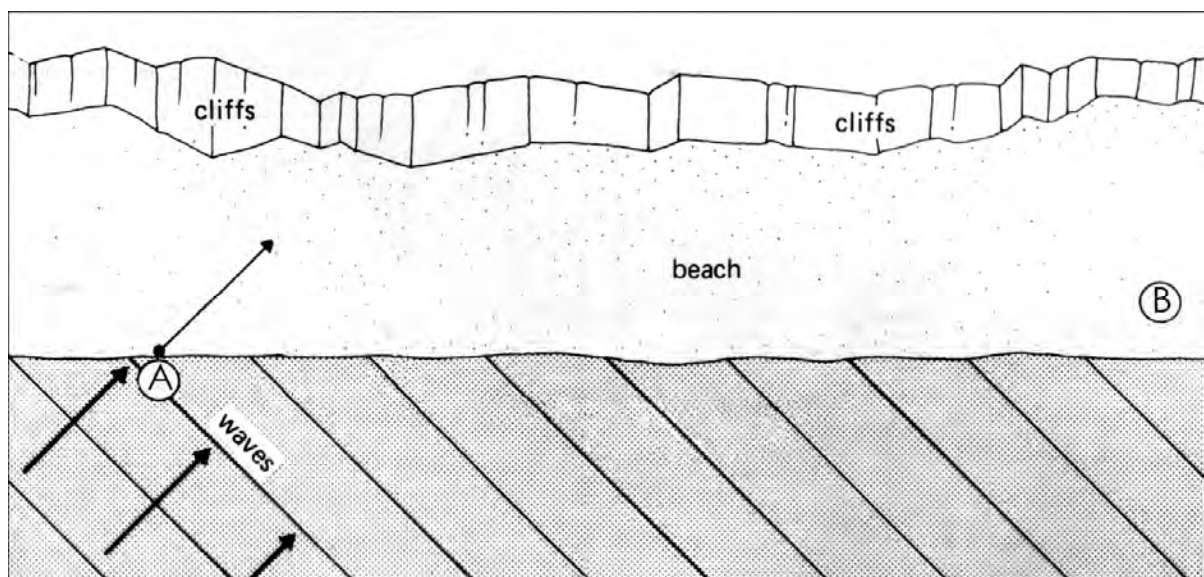
(1)

- e. Is it correct to say that the Southern Hemisphere is experiencing summer at this time of the year? Why?

.....  
 .....  
 .....

(2)

5. Study carefully the diagram below. Now answer the following questions.



- a. Complete the diagram by the use of arrows to show how sand and pebbles at point **A** eventually reach the other side of the beach at point **B**. (2)
- b. On the diagram label the **swash** and the **backwash**. (1)
- c. Use the terms **swash**, **backwash** and **longshore drift** to describe how material is moved along the beach.

.....

.....

.....

.....

.....

.....

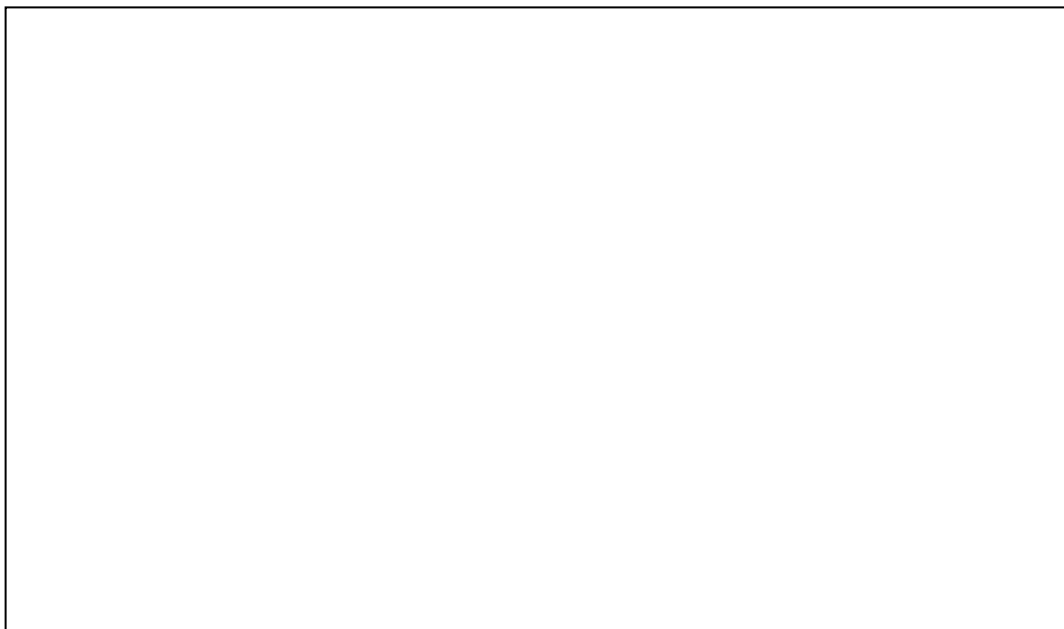
(3)

- d. Name one landform that is formed from longshore drift.

.....

(1)

- e. Draw a labelled diagram to show the landform you named in (d) above.



(3)



6. Read carefully the newspaper extract about China's one-child policy.

## Has China's one-child policy worked?

China's family planning policy has prevented 400 million births, officials say.

Since the regulations were introduced in 1979, China has kept its population in check.

And it looks likely that, nearly 30 years after the policy was first introduced, it will not be relaxed to allow couples to have more children.

Many Chinese believe this is a mistake and will result in a number of serious demographic problems in the future. But the government thinks that the policy was a huge success. "Because China has worked hard over the last 30 years, we have 400 million fewer people," said Zhang Weiqing, minister in charge of the National Population and Family Planning Commission.

- a. Why was the one-child policy introduced in China in 1979?

.....  
.....

(2)

- b. Was this policy successful according to the Chinese government? Why?

.....  
.....

(2)

- c. List 4 ways by which the Chinese government 'encouraged' people to have just one child.

.....  
.....  
.....  
.....

(4)

d. What serious problems can such a policy create in the future? List two problems.

.....

.....

.....

.....

(2)

7. a. Give the meaning of the following terms:

(i) **Migration:**

.....

.....

(ii) **Rural-to-urban migration:**

.....

.....

(4)

b. What is the difference between **voluntary migration** and **forced migration**?

.....

.....

.....

(2)

c. Give two reasons for **forced migration**.

.....

.....

.....

(2)

d. Give two reasons for **voluntary migration**.

.....

.....

.....

(2)

8. Study the photo of a **geothermal power station** in Iceland.



a. What is geothermal energy?

.....  
.....  
.....

(2)

b. Is geothermal energy a renewable or a non-renewable source of power?

.....

(1)

c. Briefly explain how geothermal energy is produced.

.....  
.....  
.....  
.....

(3)

- d. Give two advantages and two disadvantages of geothermal energy.

.....

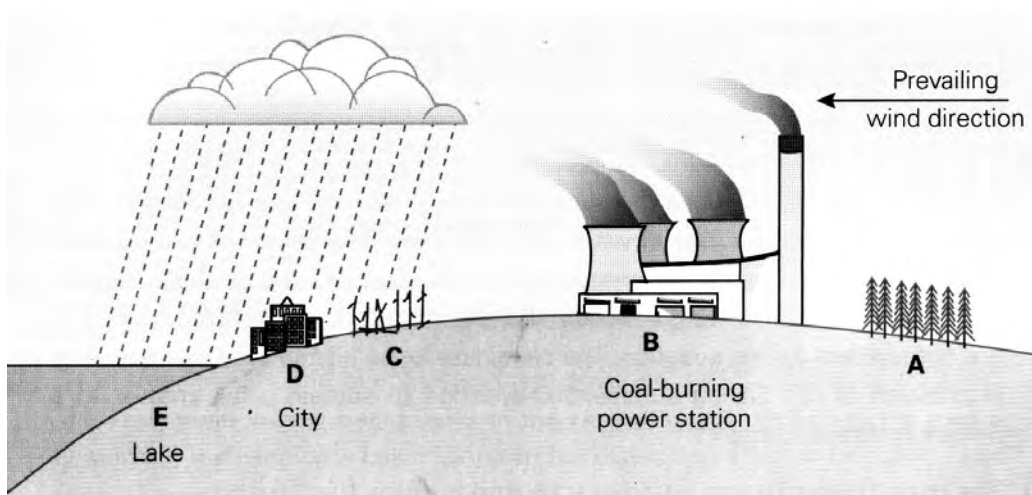
.....

.....

.....

(4)

9. Study the diagram below which shows one cause and one effect of acid rain pollution.



- a. State the cause and effect of acid rain shown on the diagram.

.....

.....

.....

(2)

- b. Why is the effect likely to be greater at C, D and E than A?

.....

.....

(2)

- c. Describe the likely effects of acid rain in the areas labelled D and E.

.....

.....

.....

.....

(4)