

FORM 4

TEXTILES STUDIES

TIME: 1h 30min

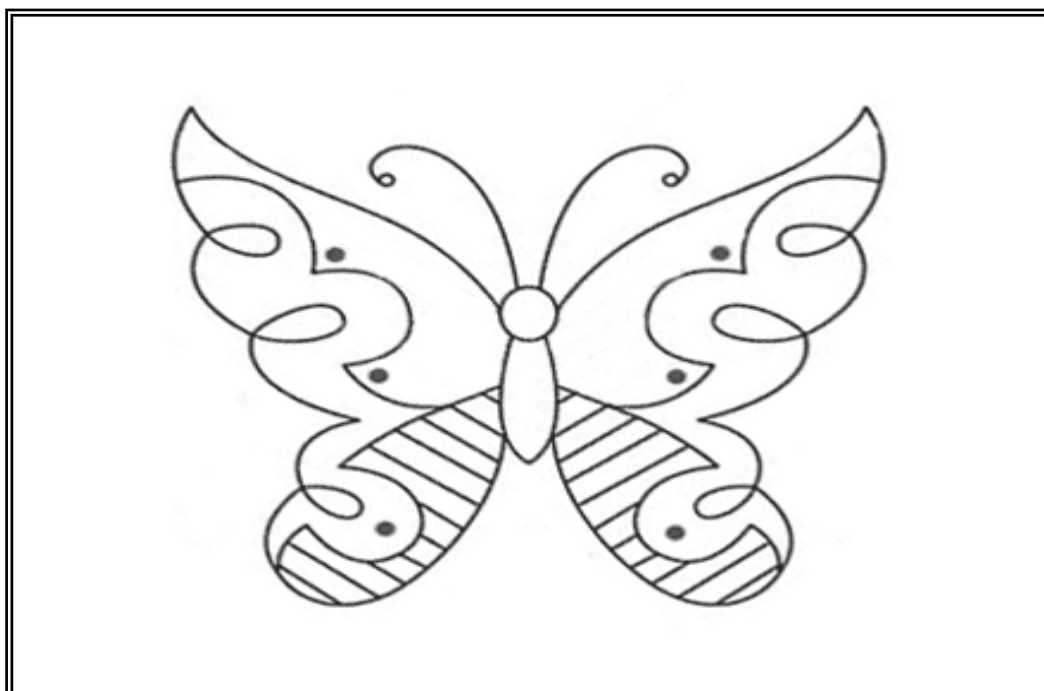
Name: \_\_\_\_\_

Class: \_\_\_\_\_

1. A child's room has an empty wall where a fabric collage/wall hanging can be placed to decorate.

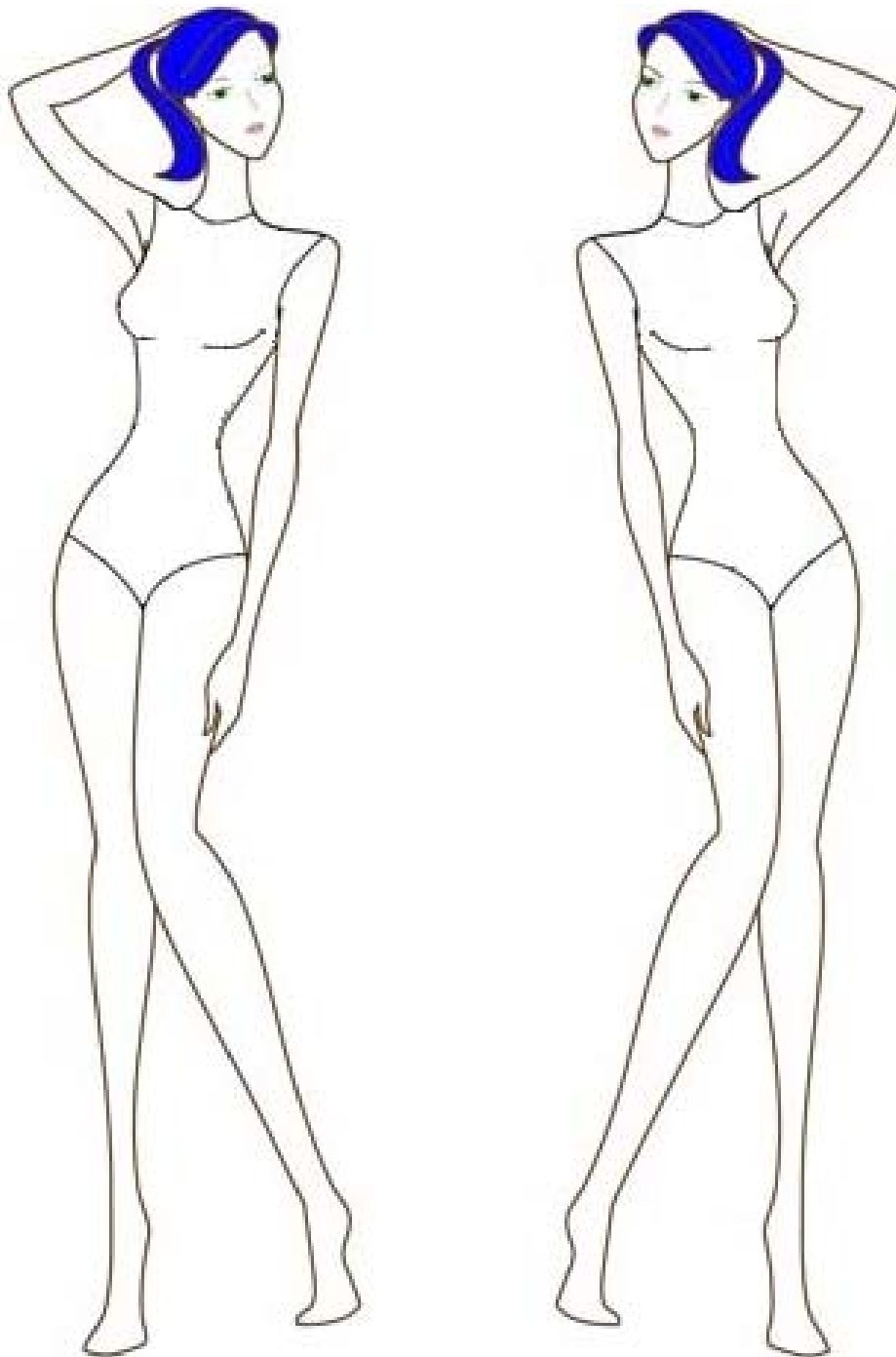
**On the picture below**, decorate the design that can be made into a fabric collage. Work in this way:

- a. Name and draw **four** embroidery stitches that can be used to work the design. (4, 4 marks)
- b. Choose and mark **one** area in the picture where you can use appliqué. Name the fabric chosen to work this area. (*Mark this on the picture below*) (1 mark)
- Name of fabric for appliqué: \_\_\_\_\_ (1 mark)
- c. Suggest a suitable fabric for the background. Give a reason for your choice.
- Fabric \_\_\_\_\_ (1 mark)
- Reason \_\_\_\_\_ (2 marks)
- d. Colour the fabric collage. (4 marks)
- e. Suggest **two** decorations that can be added to the butterfly to make it more interesting. Draw these on the butterfly design as well.
- (i) \_\_\_\_\_ (ii) \_\_\_\_\_ (2 marks)



- 2a. Using these figure templates, design **two** different tops/blouses to be worn by your friend. (*an example is included to help you*) (3, 3 marks)
- b. Design a trouser to match with each top/blouse. (2, 2 marks)
- c. Describe **four** fashion features of the outfits. (4, 4 marks)
- d. For which occasion would these outfits be useful?

\_\_\_\_\_ (2 marks)



e. The diagram shows the layout of a blouse. Name each pattern piece. An example has been given for you.

**A** \_\_\_\_\_

**B** \_\_\_\_\_

**C** \_\_\_\_\_

**D** Back Facing

**E** \_\_\_\_\_

(4 marks)

f. The fabric for this blouse is single width (115cm).

(i) Mark the fold and the selvedges on the diagram.

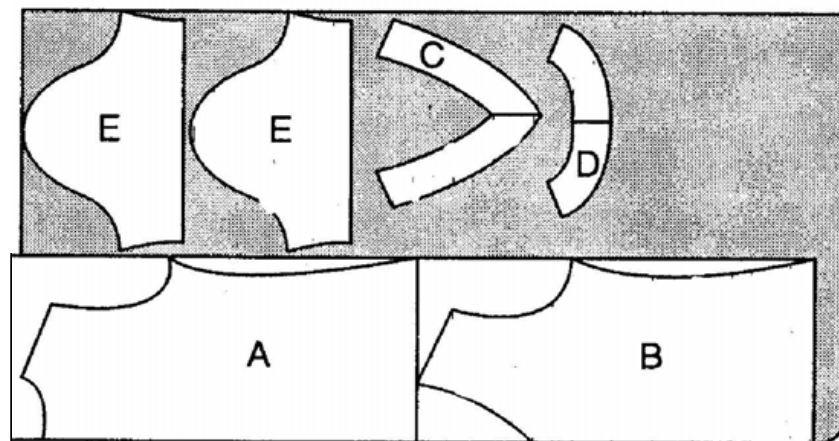
(1, 1 mark)

(ii) On **one** of the pattern pieces **E** mark the straight grain.

(1 mark)

g. Name another common width of fabric. \_\_\_\_\_

(1 mark)



h. A cotton/lycra blend was used to make this blouse.

(i) Name **two** properties of this fabric blend.

(i) \_\_\_\_\_

(ii) \_\_\_\_\_

(1, 1 marks)

(ii) Name another fabric suitable for making this blouse. Give a reason for your choice.

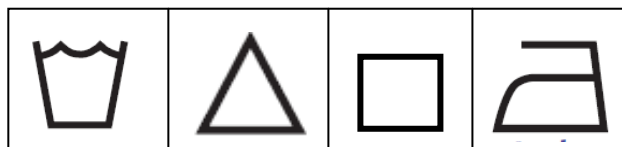
Fabric \_\_\_\_\_

(1 mark)

Reason for choice \_\_\_\_\_

\_\_\_\_\_ (2 marks)

(iii) Fill in the symbols for washing, bleaching, drying and ironing this blouse which is made from a **brown cotton/lycra blend**.



(4 marks)

(iv) Name **one** experiment you carried out at school this year.

\_\_\_\_\_

(1 mark)

3. Read the following information about Lyocell and then answer the questions that follow.

Lyocell is a fabric better known by its brand name Tencel®. It has a soft finish, packs light and is made from cellulose (vegetable matter), or wood pulp. It is noted for its durability and strength, in addition to its eco-friendly manufacturing techniques. Lyocell is made by chipping wood, breaking down the wood fibers with the non-toxic chemical, and then placing the material in a spinneret. The spinneret produces long fibers, which are then dried and woven into cloth. In clothing, you'll find lyocell in a number of styles and finishes. Some lyocell clothing looks like denim material, while others look more like suede. Lyocell can also be made to look like wool, cotton, rayon or poly/silk blends. Garments made of lyocell can be more expensive than other manufactured fabrics such as rayon. The fabric is extremely strong, and is perfect for packing for a holiday. It does not wrinkle much and many forms of it are easy care, and can be machine-washed. Most do require drip-drying, but improvements in lyocell continue. Lyocell fabrics are also naturally biodegradable. Manufacturing lyocell is also environmentally friendly because less water and energy is used than in the manufacture of other manmade fibers.

a. What is Lyocell made from?

\_\_\_\_\_ (1 mark)

b. Why is lyocell suitable for packing for a holiday? Give **one** reason.

(i) \_\_\_\_\_

(2 marks)

c. Lyocell is eco friendly because:

(i) It is Bio \_\_\_\_\_.

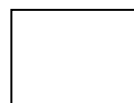
(ii) Less w \_\_\_\_\_ and energy is used than in the manufacture of other manmade fibres.

d. The s \_\_\_\_\_ produces long fibres, which are then dried.

e. Some Lyocell clothing looks like d \_\_\_\_\_

(4 marks)

f. Draw the drip dry symbol.



(1 mark)

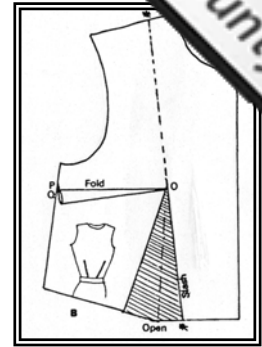
4. The diagram shows how a dart can be changed from one part of a pattern to another.

a. Explain how the alteration is carried out.

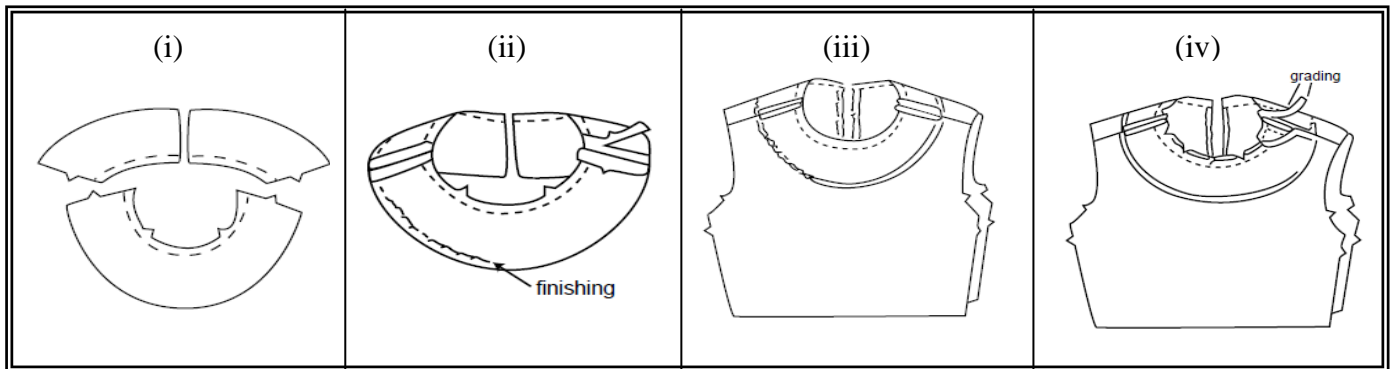
(i) \_\_\_\_\_

(ii) \_\_\_\_\_

(2 marks)



b. Using the diagrams to help you, explain how to make and attach a neckline facing to a blouse by filling in with the words provided below.



**Vilene, allowance, right, stitch, facing, match, wrong, flat, garment, notches**

(i) Cut out front and back f \_\_\_\_\_ and apply v \_\_\_\_\_.

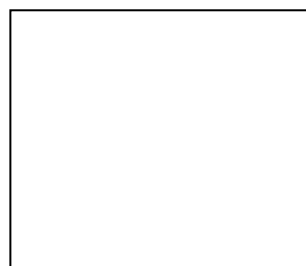
(ii) S \_\_\_\_\_ the pieces together, pressing and finishing the edge.

(iii) Place the r \_\_\_\_\_ sides of the facing and the garment together. M \_\_\_\_\_ seams and n \_\_\_\_\_ and machine stitch.

(iv) Grade the seam a \_\_\_\_\_ by trimming the facing narrower than the

g \_\_\_\_\_. Turn to the w \_\_\_\_\_ side and press f \_\_\_\_\_. (10 marks)

c. Draw a diagram showing the finished facing.



(2 marks)

5. In order to add to their functional qualities, textile items in the home often require special finishes.

a. Name **two** finishes that can be applied to fabrics and explain their use.

Finish **one** \_\_\_\_\_

\_\_\_\_\_

Finish **two** \_\_\_\_\_

\_\_\_\_\_ (2, 2 marks)

b. Explain the importance of care labels.

\_\_\_\_\_

\_\_\_\_\_ (2 marks)

c. Detergents and cleaning substances have a considerable effect on the environment.

Name **three** points a consumer must keep in mind when buying laundry products to be more environmentally friendly.

(i) \_\_\_\_\_

\_\_\_\_\_

(ii) \_\_\_\_\_

\_\_\_\_\_

(iii) \_\_\_\_\_

\_\_\_\_\_ (3 marks)

6a. In the box provided below mark the following: Fold, Selvedges, Grain line, Warp, Weft, Bias,

True cross (7 marks)

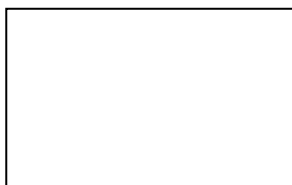
b. Which is the strongest thread in a piece of woven fabric?

\_\_\_\_\_ (1 mark)



c. Name and draw **two** uses of crossway strips.

(i) \_\_\_\_\_ (ii) \_\_\_\_\_



(2, 2 marks)