

FORM 5

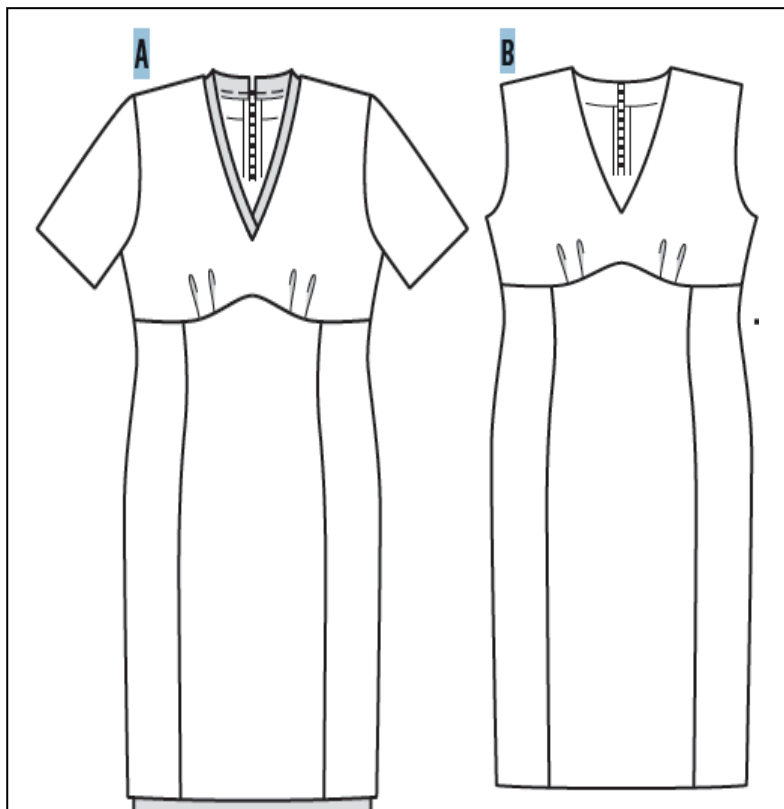
TEXTILES STUDIES

TIME: 1h 45min

Name: \_\_\_\_\_

Class: \_\_\_\_\_

1. Look at the following two dresses.



a) Identify **one** difference in the style.

• \_\_\_\_\_  
 (½ mark)

b) List **three** basic measurements needed to make these dresses.

i. \_\_\_\_\_  
 ii. \_\_\_\_\_  
 iii. \_\_\_\_\_

(1½ marks)

c) List **two** sewing notions needed to make these dresses.

i. \_\_\_\_\_  
 ii. \_\_\_\_\_

(1 mark)

d) i. For which of the following figure types is this style most suitable? Underline the correct answer.

Fuller figure

Slimmer figure

(1 mark)

ii. Explain why.

• \_\_\_\_\_  
 \_\_\_\_\_

(2 marks)

- e) Both these dresses are fastened with a zip. Using the following diagrams, match the steps in the correct order. (*The first one has been done for you*).

Figure i



Figure ii

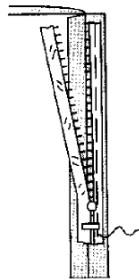


Figure iii

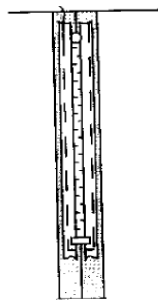
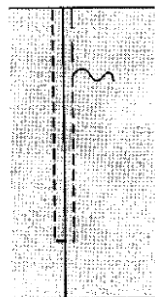


Figure iv



i

Open seam flat. Working from wrong side, tack one side of the zipper to the seam.

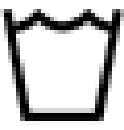
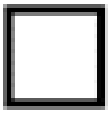
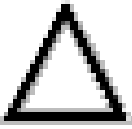
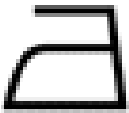
Close seam securely with tacking.

On the right side, stitch along tacking through all thicknesses. Remove tacking and press.

Close zipper. Tack other side of zipper.

(3 marks)

- f) The dresses in question 1a are made from **silk**. Fill in the missing information label.

Water temperature →			← Tumble drying
Bleaching symbols →			← Ironing (dot)

(4 marks)

- g) The fabric of these dresses frays.

Fill in using the words provided below to describe the main problems you are likely to meet when:

- i. making and neatening seams:

- seam allowance will \_\_\_\_\_ easily.
- neatening stitch will cause \_\_\_\_\_ unless handled with great care.
- needle might \_\_\_\_\_ edges of fabric causing more fraying.

<b>puckering</b>	<b>tear</b>	<b>fray</b>
------------------	-------------	-------------

(3 marks)

- ii. putting up the hem:

- hem edge frays while \_\_\_\_\_ hem.
- hem edge frays while \_\_\_\_\_ unless a double turning is made or \_\_\_\_\_ is applied.
- hem edge frays while neatening edge unless a special stitch is used such as \_\_\_\_\_.

<b>overlock</b>	<b>three step zig-zag</b>	<b>stitching</b>	<b>putting up</b>
-----------------	---------------------------	------------------	-------------------

(4 marks)

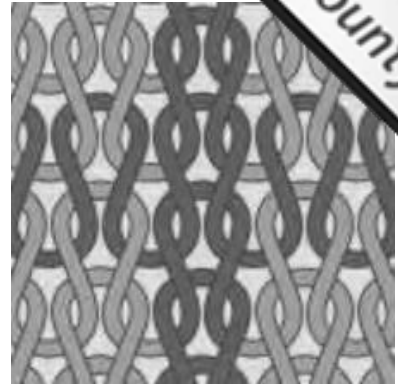
2. Knitted fabrics are a popular choice for many textile items, including garments.

a) State **two** points to be considered when stitching knitted fabrics. (*The first one has been done as an example*).

- *Tack knitted layers carefully together to prevent slippage.*

- \_\_\_\_\_
- \_\_\_\_\_

(2 marks)



b) The following are some of the advantages of using knitted fabrics for textile items. Using the words provided, fill in the missing words.

**lighter      heat      absorbent      elasticity      warmer      tighter**

- Knitted fabrics are \_\_\_\_\_ than woven fabrics. The process of knitting (by hand or machine) creates pockets of air within the material used. These pockets of air act as insulation by trapping \_\_\_\_\_ next to the body thus adding additional warmth.
- Knitted fabrics offer more \_\_\_\_\_ than woven fabrics. This makes them more flattering to the human body, as the fit can be \_\_\_\_\_.
- When full of air and loosely bound together, knitted fabrics are much \_\_\_\_\_ than woven fabrics.
- Knitted fabrics are more \_\_\_\_\_ than woven fabrics as the stitches have more room to expand.

(6 marks)

c) Describe how knitted garments should be cared for. (*The first one has been done as an example*).

- *Store flat to prevent overstretching and to maintain shape if garment is heavy.*

- \_\_\_\_\_
- \_\_\_\_\_
- \_\_\_\_\_

(6 marks)

3. These last few years, the recycling of textiles has become big fashion news.  
a) Suggest **two** different ways of recycling each of the following textile products.



i. a hand knitted woolen jersey:

- \_\_\_\_\_
- \_\_\_\_\_

ii. a denim jeans:

- \_\_\_\_\_
- \_\_\_\_\_

iii. a large train of a wedding dress:

- \_\_\_\_\_
- \_\_\_\_\_

(2, 2, 2 marks)

b) Give **two** reasons why the practice of recycling textiles should be encouraged.

- \_\_\_\_\_
- \_\_\_\_\_

(4 marks)

4. Why is a tracksuit a popular item of sportswear?

a) Fill in the blanks using the words provided to give reasons why tracksuits are suitable for sportswear.

**comfortable    finish    cost    genders    team    quick    warm    care for**

- i. It helps to keep the sportsperson \_\_\_\_\_ when not participating.
- ii. A tracksuit makes the sportsperson look like part of a \_\_\_\_\_.
- iii. It is \_\_\_\_\_ to put on and take off.
- iv. The tracksuit is \_\_\_\_\_ and easy to wear.
- v. It has reasonable \_\_\_\_\_.
- vi. Fabric is usually easy to \_\_\_\_\_.
- vii. Sometimes fabric is treated with a \_\_\_\_\_ e.g. windproof.
- viii. It is unisex which means that it is suitable for both \_\_\_\_\_.

(8 marks)

- b) Your seven year old brother needs a tracksuit for school.

List **three** features you need to consider when designing this tracksuit. (*The first one has been done as an example*).

- i. *Choose a style that allows for growth with fullness, good hems, adjustable fastenings.*
- ii. \_\_\_\_\_
- iii. \_\_\_\_\_
- iv. \_\_\_\_\_

(3 marks)

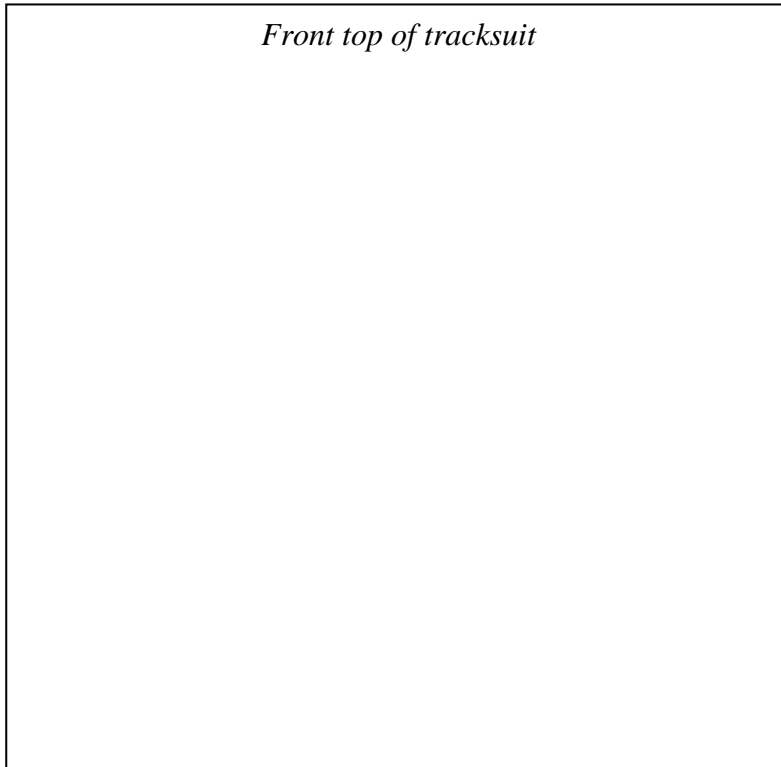
- c) Sketch a tracksuit suitable for your brother. Show the front and back views. Label **two** special features.

<i>Front View</i>	<i>Back View</i>

(2, 2, 2 marks)

- d. Sketch a design to decorate the front top of the tracksuit, making use of some left fabrics. Give details of **three** colours used and **three** decorative stitches.

*Front top of tracksuit*



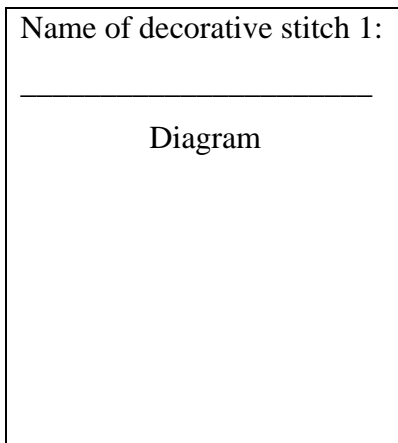
- i. Design (2 marks)
- ii. Explain your inspiration for this design.
- \_\_\_\_\_
- \_\_\_\_\_
- \_\_\_\_\_
- (2 marks)
- iii. Give an effective colour scheme for your design:
- \_\_\_\_\_
  - \_\_\_\_\_
- (1 mark)

- iv. Draw and name each decorative stitch used.

Name of decorative stitch 1:

\_\_\_\_\_

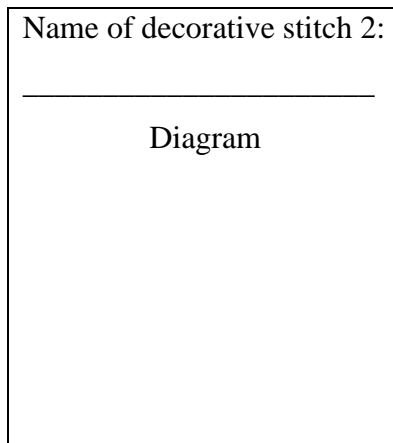
Diagram



Name of decorative stitch 2:

\_\_\_\_\_

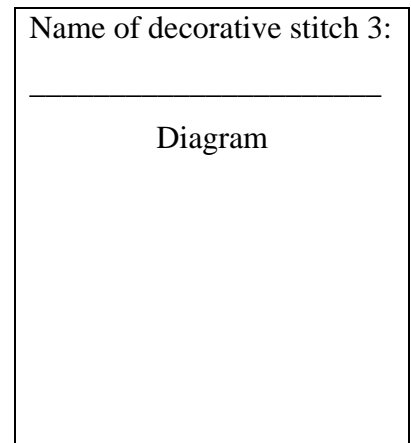
Diagram



Name of decorative stitch 3:

\_\_\_\_\_

Diagram



(3 marks)

- e) Name **two** suitable fabrics you can buy for this tracksuit.

- \_\_\_\_\_
- \_\_\_\_\_

(2 marks)

- f) Which of these **two** fabrics mentioned above do you prefer?

Fabric: \_\_\_\_\_

(1 mark)

- g) Name **three** properties that have influenced your preferred choice of material. (An example has been given).
- *It is crease resistant.*
  - \_\_\_\_\_
  - \_\_\_\_\_
  - \_\_\_\_\_
- (3 marks)

- h) Name **two** experiments which you can carry out to test your chosen fabric. (An example has been given).

*Resistance to sunlight.* \_\_\_\_\_

(2 marks)

- i) Choose **one** experiment from the above and write in brief, including a diagram, how this experiment is carried out.

Name of experiment: \_\_\_\_\_

**Diagram**

**Method**

1. \_\_\_\_\_
2. \_\_\_\_\_
3. \_\_\_\_\_
4. \_\_\_\_\_
5. \_\_\_\_\_

(2, 5 marks)

5. A sewing machine is a basic tool for making clothing items.

- a) State why a sewing machine is a useful tool for making clothes.

- \_\_\_\_\_
- \_\_\_\_\_



(2 marks)

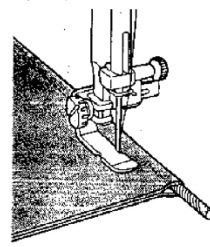
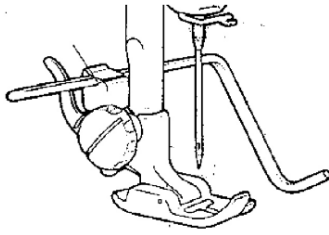
- b) Mention **three** factors you would consider when buying a sewing machine. (An example has been given).

- *Carry out research work on many different models and brands.*
- \_\_\_\_\_
- \_\_\_\_\_
- \_\_\_\_\_

(3 marks)



- c) Name the following **two** attachments of the sewing machine. Explain the use of each attachment.



Name of attachment i:

Name of attachment ii:

Use: \_\_\_\_\_

Use: \_\_\_\_\_

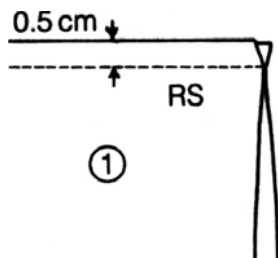
(1,1,1,1 marks)

- d) List **three** safety rules to be followed when using the sewing machine.

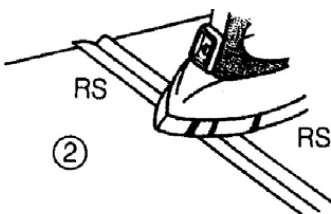
- \_\_\_\_\_
- \_\_\_\_\_
- \_\_\_\_\_

(3 marks)

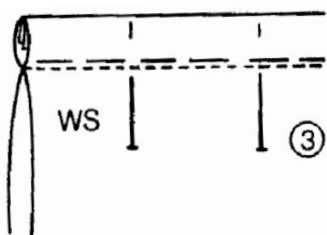
- e) The French Seam is a suitable seam in a garment made from transparent fabrics. Using the following diagrams to help you, describe how to work this seam.



1. \_\_\_\_\_  
 \_\_\_\_\_



2. \_\_\_\_\_  
 \_\_\_\_\_



3. \_\_\_\_\_  
 \_\_\_\_\_

4. \_\_\_\_\_  
 \_\_\_\_\_

(4 marks)