

# SECONDARY SCHOOL ANNUAL EXAMINATIONS 2010

Directorate for Quality and Standards in Education  
Educational Assessment Unit

StudentBounty.com

**FORM 5**

**TEXTILES STUDIES**

**TIME: 1h 45min**

**Name:** \_\_\_\_\_

**Class:** \_\_\_\_\_

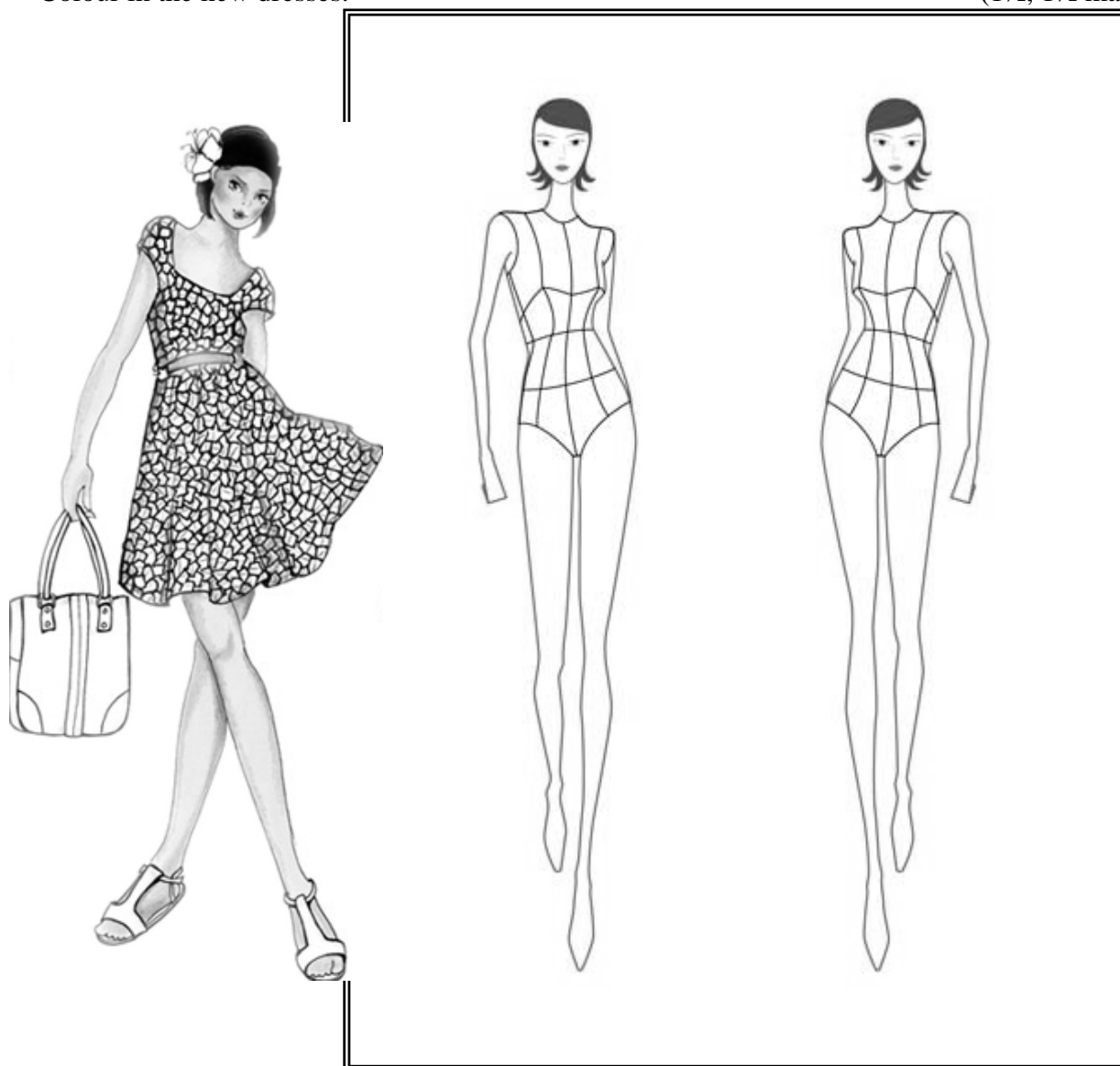
1. This dress was made for a teenager to wear for a party.
  - a. Using the figure templates to help you, sketch **two** other outfits suitable for teenagers.

(3, 3 marks)
  - b. Name an occasion where each outfit can be worn.
    - (i) \_\_\_\_\_
    - (ii) \_\_\_\_\_

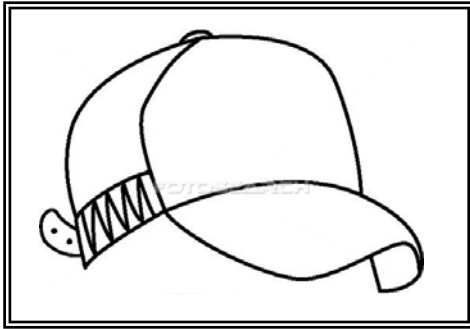
(1, 1 marks)
  - c. Draw **three** accessories to match each outfit. 

(1½, 1½ marks)
  - d. Colour in the new dresses. 

(1½, 1½ marks)



2. Microfibres are very fine fibres. They can be specially made to produce certain qualities and functions. Manufacturers generally produce as fine a fibre as possible to make the fabric light in weight, strong, crease resistant, soft and sheer to handle and with excellent draping qualities. The woven fabric is coated with polyurethane which makes it water repellent (water proof). Water can still evaporate through tiny pores (holes), however water cannot get through, so the body is left dry even after exercise. Microfibres are usually made from polyester or polyamide.



Complete these sentences:

- a. Microfibres are very \_\_\_\_\_ fibres. (2 marks)
- b. Microfibres are **light in weight**, s \_\_\_\_\_, **crease r** \_\_\_\_\_, **soft and s** \_\_\_\_\_ **to handle**. (3 marks)

- c. How can microfibres be made waterproof?

The woven f \_\_\_\_\_ is coated with p \_\_\_\_\_ to make it water proof. (2 marks)

- d. This cap is made from microfibres. Name **one** item of clothing that can be made from microfibres. Give a reason for your choice.

**Item** \_\_\_\_\_ (1 mark)

**Reason** \_\_\_\_\_ (2 marks)

3. This trousers is made from white cotton drill

- a. Draw a care label showing how to clean this pair of trousers. Include:

- (i) washing symbol and temperature  
(ii) drying  
(iii) bleaching  
(iv) ironing symbol and temperature  
(v) dry cleaning (6 marks)

(i)	(ii)	(iii)
Reshape While damp	(iv)	(v)



4. These designs were printed with fabric paints.
- b. On the design, draw **three** types of embroidery stitches that can be used to decorate the design. (3 marks)

c. Name each stitch used.

(i) \_\_\_\_\_

(ii) \_\_\_\_\_

(iii) \_\_\_\_\_ (3 marks)

- d. Suggest **two** other decorations that can be used to make the design more interesting.

\_\_\_\_\_  
\_\_\_\_\_

(2 mark)

e. List **three** things needed to paint the design.

(i) \_\_\_\_\_ (ii) \_\_\_\_\_ (iii) \_\_\_\_\_

(3 marks)

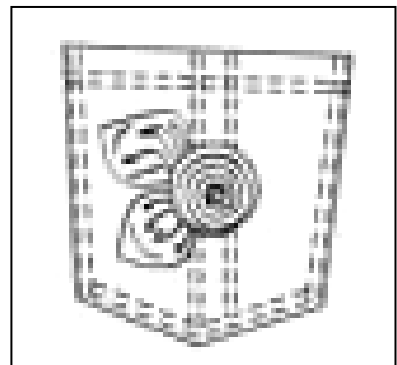
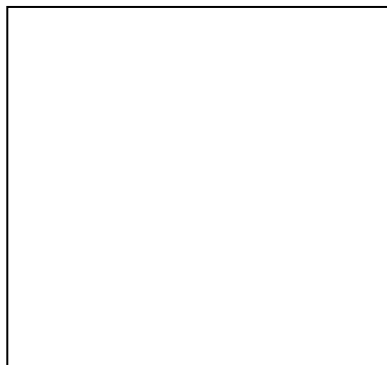
- f. Name and draw **one** other item where you could use this design.

**Name**

\_\_\_\_\_

**Draw** →

(1, 1 marks)

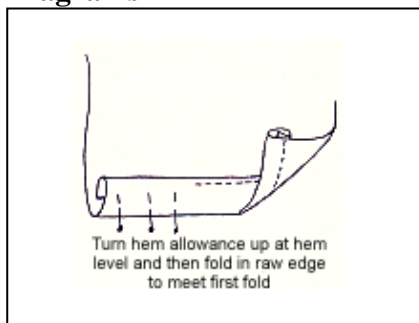


- g. Write **two** short sentences to explain how to iron the decoration.

\_\_\_\_\_  
\_\_\_\_\_ (2 marks)

- h. Explain how you would turn up and machine stitch the bottom hem of the trousers.

### Diagrams



### Notes

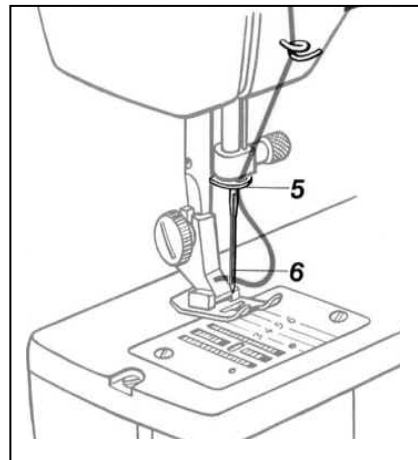
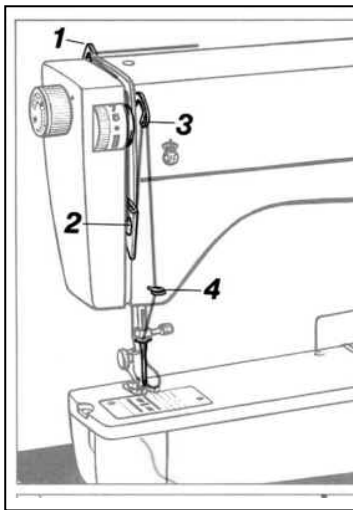
(i) \_\_\_\_\_

(ii) \_\_\_\_\_

(iii) \_\_\_\_\_

(3 marks)

4. The diagrams show the threading of a sewing machine.



- a. Using the numbers to guide you, explain how to thread the sewing machine.

Start by placing a spool of thread in the spool pin.

1. Guide thread through thread g \_ \_ \_ \_ .
2. Then through the tension d \_ \_ \_ \_ .
3. Then through thread take up l \_ \_ \_ \_ .
4. From the next t \_ \_ \_ \_ \_ guide.
5. Then from needle t \_ \_ \_ \_ \_ guide.
6. And into the n \_ \_ \_ \_ \_ hole.

(6 marks)

- b. List **two** points that need to be kept in mind to ensure safety when using a sewing machine.

- (i) \_\_\_\_\_
- (ii) \_\_\_\_\_

(2 marks)

- c. Your new sewing machine is not working properly.

List **two** important points to write in your letter of complaint to the shopkeeper.

---



---

(2 marks)

- d. This safety mark can be found on electric irons. Why is this mark important?




---

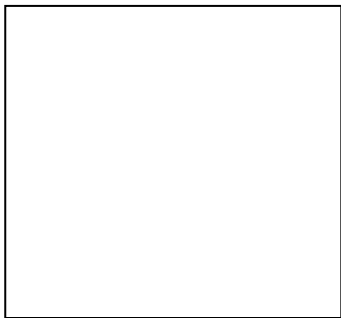


---

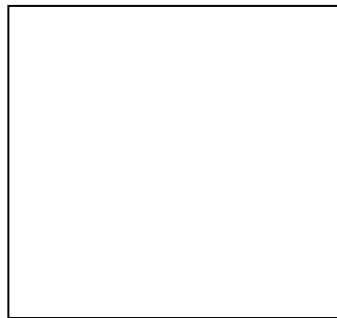
(2 marks)

5. Garments are often thrown away when they are no longer fashionable. Design **two** small items that can be made from a pair of jeans to help save the environment. Include notes on making up **one** of the items.

Draw **Item 1**



**Item 2**



Making up item No \_\_\_\_\_

---



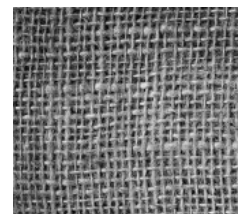
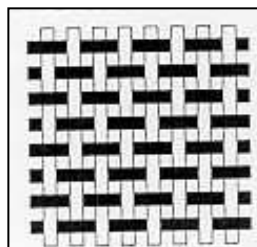
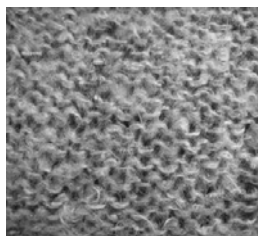
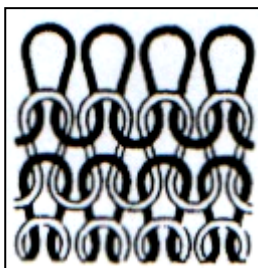
---



---

(2, 2, 3 marks)

- 6a. Identify each method of making fabric shown below. Name a fabric made by each method. Give a property of each fabric.



Method A \_\_\_\_\_

Method B \_\_\_\_\_

Fabric \_\_\_\_\_

Fabric \_\_\_\_\_

Property \_\_\_\_\_

Property \_\_\_\_\_

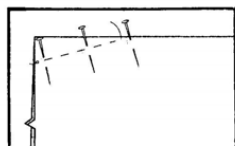
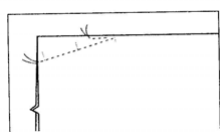
(2, 2, 4 marks)

- b. Name **two** other methods of making fabrics.

(i) \_\_\_\_\_ (ii) \_\_\_\_\_ (2 marks)

7. Using these diagrams, explain how to stitch the waist darts on a skirt.

**Diagrams**



**Notes**

1. \_\_\_\_\_
2. \_\_\_\_\_
3. \_\_\_\_\_
4. \_\_\_\_\_

(4 marks)

- 8a. Pressing garments well gives a professional look to the items. However, this can be expensive and harmful to the environment.

What advice can you give to a friend who has started to sew to save electricity?



- (i) \_\_\_\_\_
- (ii) \_\_\_\_\_

(2, 2 marks)

- b. Why is a sleeve board useful when ironing and pressing?

\_\_\_\_\_  
 \_\_\_\_\_

(2 marks)

9. Your family are making new curtains for the living room.

- a. Name a fabric that is easy to keep clean and does not shrink when washed.

**Fabric** \_\_\_\_\_

(1 mark)

- b. Describe how to carry out a shrink test on a sample of the fabric. Draw a diagram to illustrate your answer.

**Diagram**

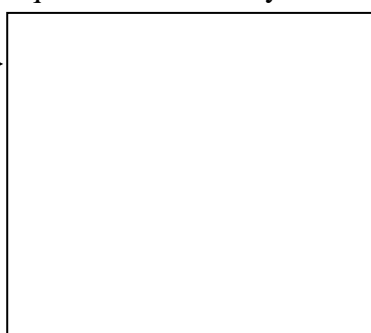
**Method**

- (i) \_\_\_\_\_
- (ii) \_\_\_\_\_
- (iii) \_\_\_\_\_
- (iv) \_\_\_\_\_

(2, 4 marks)

- c. Draw a design suitable for a cushion to be used in the living room. Explain how to make up the design using appliqué and embroidery stitches.

**Draw your design here** →



**Instructions**

- (i) \_\_\_\_\_
- (ii) \_\_\_\_\_
- (iii) \_\_\_\_\_

(3, 3 marks)