

# JUNIOR LYCEUM ANNUAL EXAMINATIONS 2009

Directorate for Quality and Standards in Education  
Educational Assessment Unit

FORM 3

TEXTILES STUDIES

TIME: 1h 30min

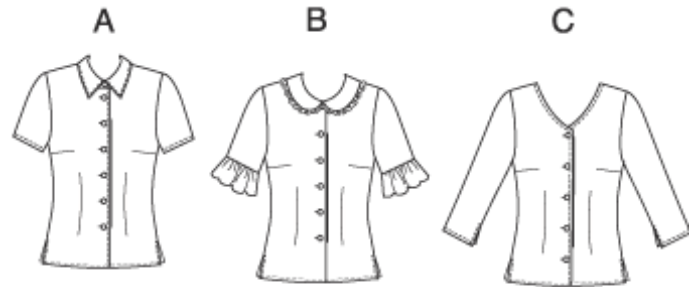
Name: \_\_\_\_\_

Class: \_\_\_\_\_

1. This blouse is available from boutiques, and comes in a variety of styles. Look at the picture and fill in this information:

- a. List **three** common fashion features of this blouse.

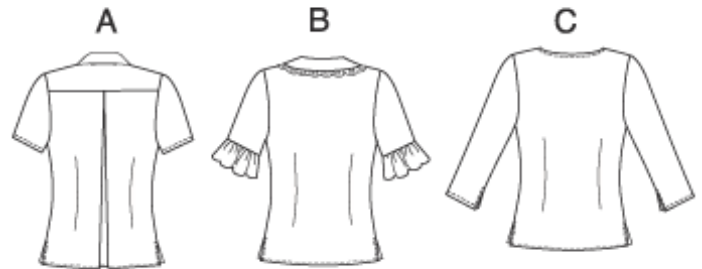
\_\_\_\_\_  
\_\_\_\_\_  
\_\_\_\_\_ (3 marks)



- b. Name a fabric suitable for making **one** of the blouses. Give a reason for your choice.

**Fabric** \_\_\_\_\_  
(1 mark)

**Reason** \_\_\_\_\_



\_\_\_\_\_ (2 marks)

- c. (i) Using the figure template to help you, draw **one** other variation of this blouse. (3 marks)

- (ii) On the same figure template, draw a pair of trousers that can be worn with this blouse. (3 marks)

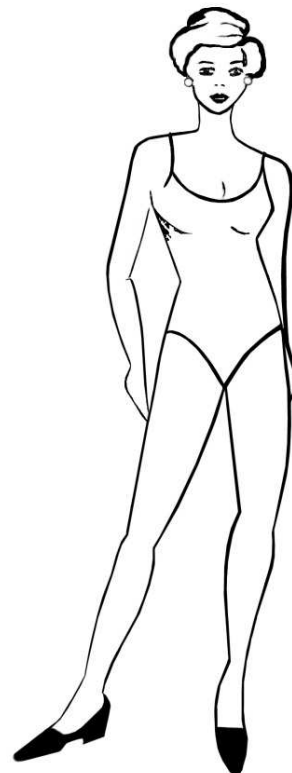
- (iii) Suggest **two** accessories you can wear with this outfit.

\_\_\_\_\_  
\_\_\_\_\_ (2 marks)

- (iv) Name an occasion when you would wear this outfit.

\_\_\_\_\_ (1 mark)

- (v) Colour the new outfit. (2 marks)



2a. Name the method of disposing of fullness shown on blouse **C** in *Question 1*.

\_\_\_\_\_

(1 mark)

b. Explain how the method is carried out. Draw diagrams to illustrate your answer.

**Diagrams**

**Method**

- (i) \_\_\_\_\_  
 (ii) \_\_\_\_\_  
 (iii) \_\_\_\_\_  
 (iv) \_\_\_\_\_

(2, 4 marks)

c. Name and draw **one** other method of disposing of fullness.

**Name** \_\_\_\_\_

**Draw** →



(1, 2 marks)

d. Name **three** haberdashery items needed to make the blouse.

- (i) \_\_\_\_\_ (ii) \_\_\_\_\_ (iii) \_\_\_\_\_

(3 marks)

e. List **three** pressing equipment needed to make the blouse.

- (i) \_\_\_\_\_ (ii) \_\_\_\_\_ (iii) \_\_\_\_\_

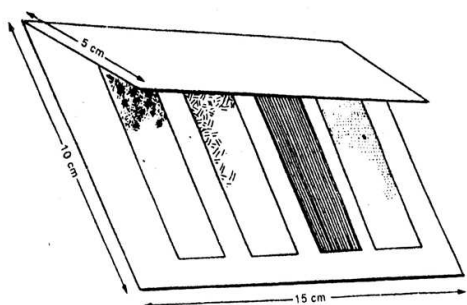
(3 marks)

f. Explain how to iron-on Vilene to the collar pieces.

\_\_\_\_\_  
 \_\_\_\_\_  
 \_\_\_\_\_

(3 marks)

g. (i) Name the experiment in the diagram. \_\_\_\_\_ (1 mark)



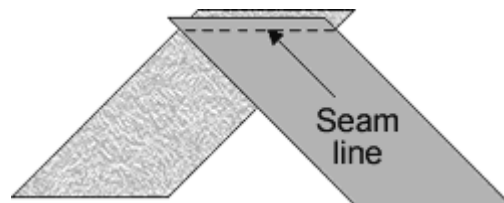
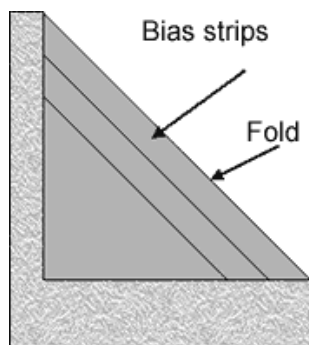
(ii) Explain why this experiment is carried out.

\_\_\_\_\_  
 \_\_\_\_\_

(2 marks)

(iii) How many days must the fabric remain outside for the experiment to succeed? \_\_\_\_\_ (1 mark)

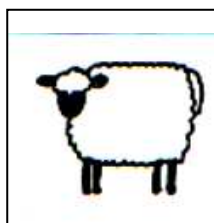
3. The neckline of blouse **C** is finished with a crossway or bias strip cut from the same material. Using the diagrams to help you, explain how to cut and join crossway or bias strips.



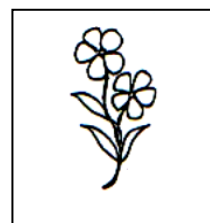
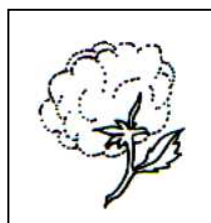
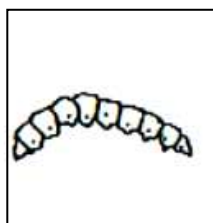
- (i) \_\_\_\_\_  
 (ii) \_\_\_\_\_  
 (iii) \_\_\_\_\_

(2, 2, 2 marks)

- 4a. Natural fibres are obtained from different sources. Give the fibre obtained from each of these sources. An example has been done for you.



Wool



(3 marks)

- b. Name **three** common items of clothing that can be made from wool.

\_\_\_\_\_

(3 marks)

- c. Give **two** reasons why these items are usually made from wool.

\_\_\_\_\_

\_\_\_\_\_ (2 marks)

- d. Explain how you would wash **one** of these items of clothing made from wool.

\_\_\_\_\_

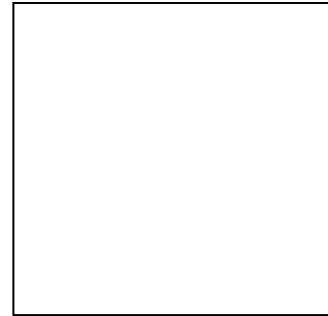
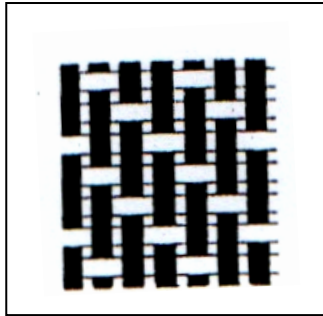
\_\_\_\_\_

\_\_\_\_\_ (3 marks)

5a. Weaving is a method of fabric construction. Name the weave in the diagram. Name **one** other type of weave.

Name: \_\_\_\_\_

Name: \_\_\_\_\_



(2, 2 marks)

b. Weaving is made up of two sets of yarns, the \_\_\_\_\_ and the \_\_\_\_\_.

(2 marks)

c. At the edge of the woven fabric, a firm edge is formed. This is called the \_\_\_\_\_.

(1 mark)

d. Name **two** properties of woven fabric.

\_\_\_\_\_

(2 marks)

e. Name **one** other method of fabric construction.

\_\_\_\_\_

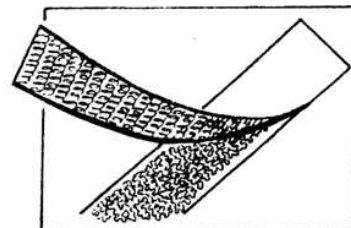
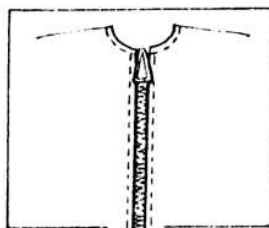
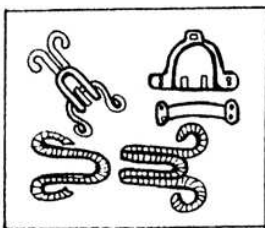
(1 mark)

f. List **two** items of clothing that are usually made with this method. (*question 5e*)

\_\_\_\_\_

(2 marks)

6a. Name the fasteners in the pictures. Suggest a place on an item where each fastener can be used.



Name: \_\_\_\_\_

Name: \_\_\_\_\_

Name: \_\_\_\_\_

Use: \_\_\_\_\_

Use: \_\_\_\_\_

Use: \_\_\_\_\_

(3, 3 marks)

b. Give **two** reasons for using fasteners on garments.

\_\_\_\_\_

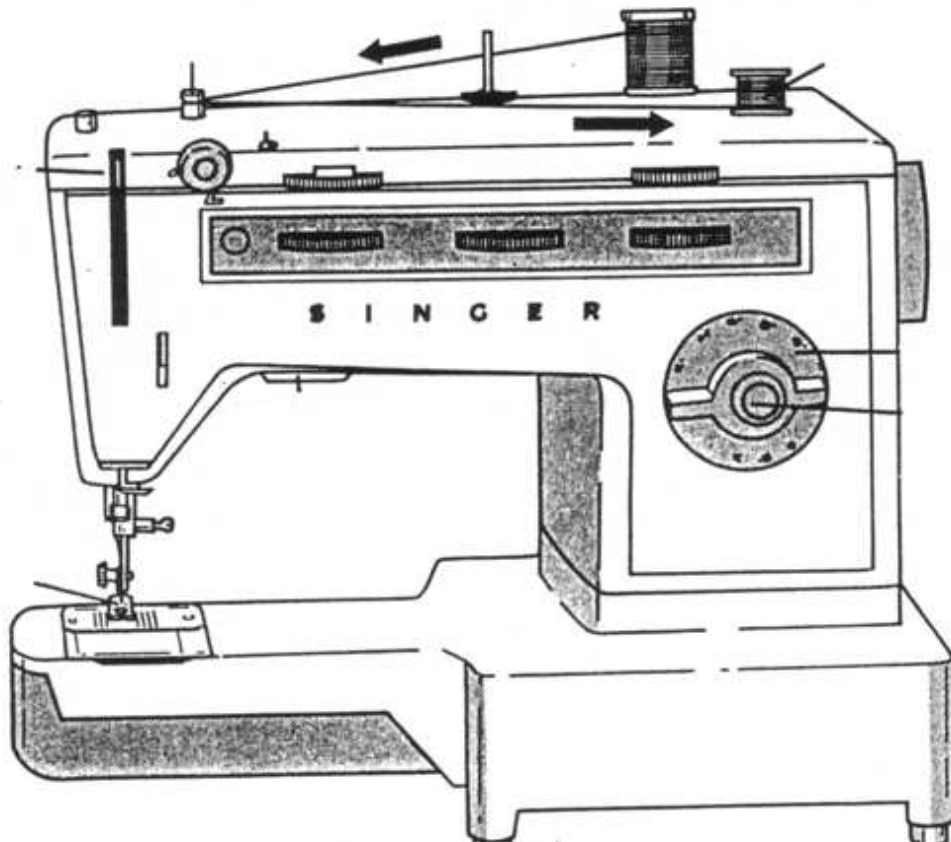
\_\_\_\_\_

(2 marks)

7a. The diagram shows the threading for winding the bobbin.

Using a coloured pencil or pen, draw the threading of the sewing machine for stitching.

(5 marks)

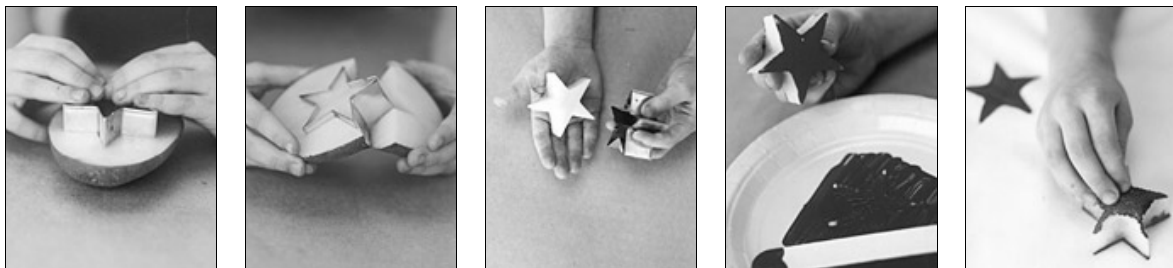


b. On the same diagram, name **five** of the parts indicated on the sewing machine. (5 marks)

8a. Name the method of colouring fabric shown in the pictures.

(1 mark)

b. Explain how the method is carried out.



- (i) \_\_\_\_\_
- (ii) \_\_\_\_\_
- (iii) \_\_\_\_\_
- (iv) \_\_\_\_\_
- (v) \_\_\_\_\_

(5 marks)

c. Tie and Dye is another method of colouring fabric. Make a list of things needed for a Tie and Dye project.

- (i) \_\_\_\_\_ (ii) \_\_\_\_\_  
(iii) \_\_\_\_\_ (3 marks)

d. In the space below, explain how you would wash a Tied and Dyed cushion.

Keep in mind that the cushion is not colourfast.  
Indicate the water temperature required.

\_\_\_\_\_  
\_\_\_\_\_  
\_\_\_\_\_  
\_\_\_\_\_

(4 marks)