

FORM 3

GEOGRAPHY (GENERAL)

TIME: 1h 30min

Name: _____

Class: _____

Answer all questions in the space provided. Write clearly and in good English.

Question 1

Complete the following sentences:

- a. Physical geography is about _____
_____ (2)
- b. Human geography is about _____
_____ (2)
- c. **Four** important lines of latitude are:

_____ (4)

Question 2

- a. Figure 1 below shows that clouds come in many shapes and sizes.



Figure 1

Mention **two** types of clouds.

(2)

b. Discuss how **two** of the features in the figures below can affect temperature and/or

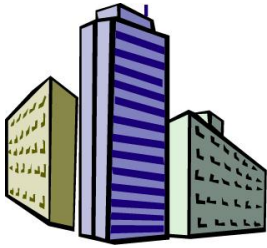


Figure 2



Figure 3

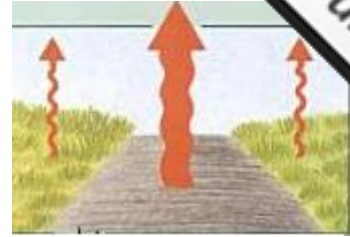


Figure 4



Figure 5

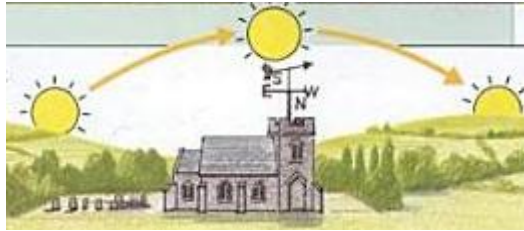


Figure 6

(2)

c. For each of the weather element in the table below, write down the corresponding weather instrument and unit of measure as in the examples given.

Weather element	Weather instrument	Unit of measure
1. humidity	<i>hygrometer</i>	<i>%</i>
2. sunshine	<i>sunshine recorder</i>	<i>hours of sunshine</i>
3. temperature		
4. rain		
5. wind speed		
6. wind direction		
7. air pressure		

(10)

Question 3

a. Match the following terms with their correct definitions.

Terms		Definitions
1. A settlement		is the land on which a place is built.
2. A function		is where goods are imported and exported.
3. The site		is a place where people live.
4. An industrial town		is a place where people go on holiday to relax.
5. A port		is a settlement with many factories.
6. A resort		is the main economic activity of a town.

(12)

b. Give **two** examples of low order goods and **two** examples of high order goods.

Low order goods		
High order goods		

(2)

Question 4

Match the following meanings to the right type of weathering.

occurs when plants and animals break down the rock
 is when water changes to ice, expands and weakens the rock
 is when rocks break down by the action of water and gases
 is when layers of rock peel off from the surface

Type of Weathering	Meaning
Freeze-thaw weathering	
Exfoliation	
Chemical weathering	
Biological weathering	

(4)

Question 5

- a. In Figure 7 below, write down in English the rocks of Malta in their correct order.

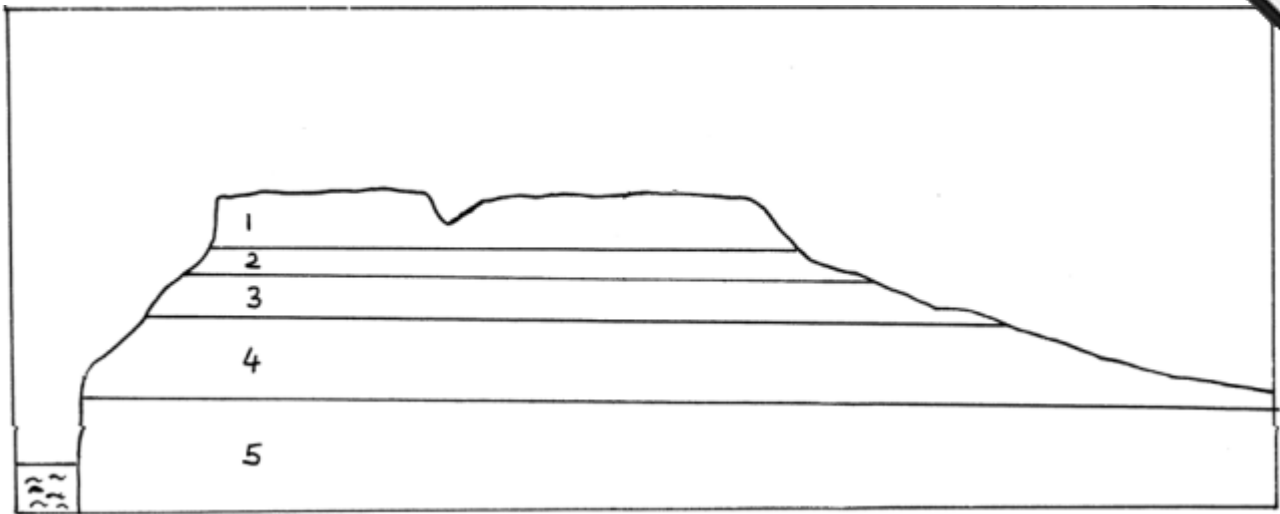


Figure 7

- b. What do you understand by the term **impermeable rock**?

_____ (2)

- c. Name an impermeable rock found in the Maltese Islands.

_____ (1)

- d. What is the upper level of water in the rock called?

_____ (1)

- e. Name the **three** major types of rocks found in the world.

_____ (3)

- f. Under which major rock type do the rocks of Malta fall?

_____ (1)

- g. Give the use of **one** type of rock found in Malta.

_____ (1)

Question 6

Examine well the diagrams below showing the three types of rainfall.

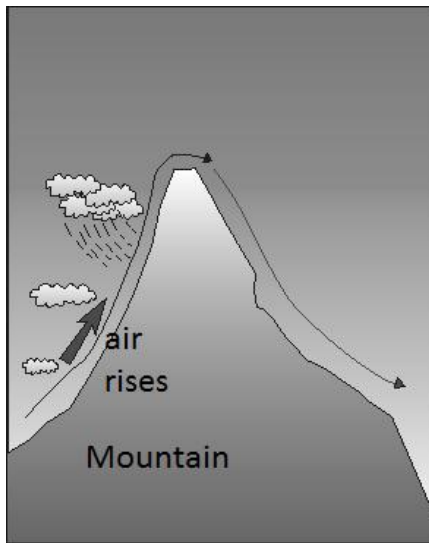


Figure 8

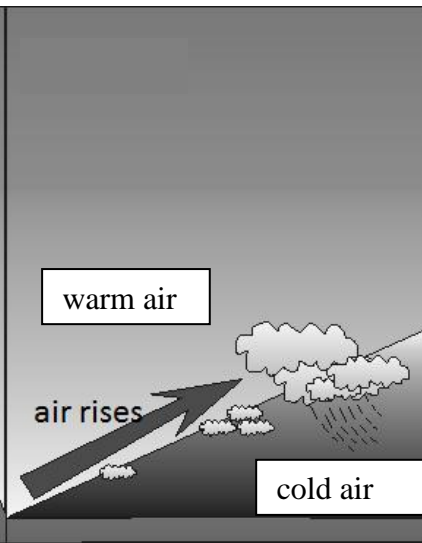


Figure 9

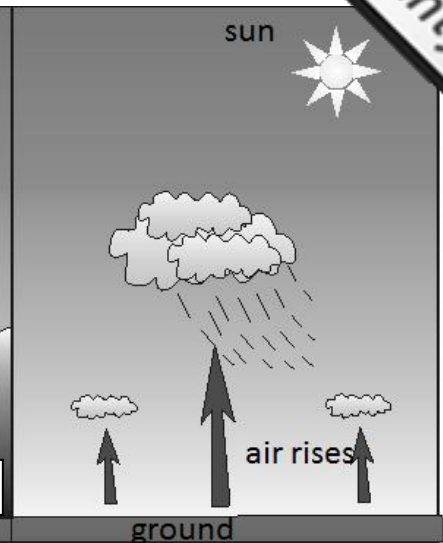


Figure 10

- a. Give the name of each type of rain according to the figure.

Figure 8	
Figure 9	
Figure 10	

(3)

- b. Write a short paragraph to explain the different processes of rain for **two** of the above figures.

Figure(write 8, 9 or 10)

(3)

Figure(write 8, 9 or 10)

Question 7

When there are several routes in an area and they are linked together, they form a transport network.

- a. What is the difference between a high density network and a low density network?

(4)

- b. In the figures below you will find two countries (Figure 11: Country A and Figure 12: Country B). Draw a low density network in Country A and a high density network in Country B.

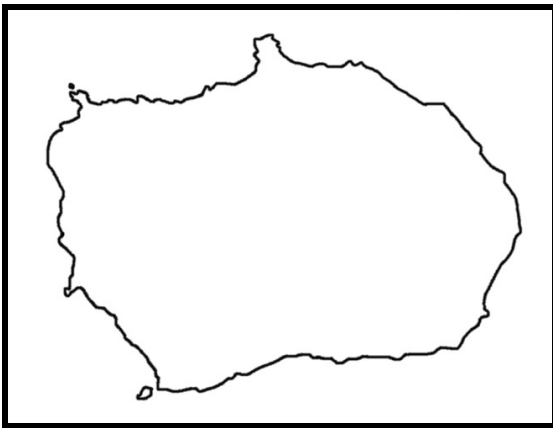


Figure 11: Country A

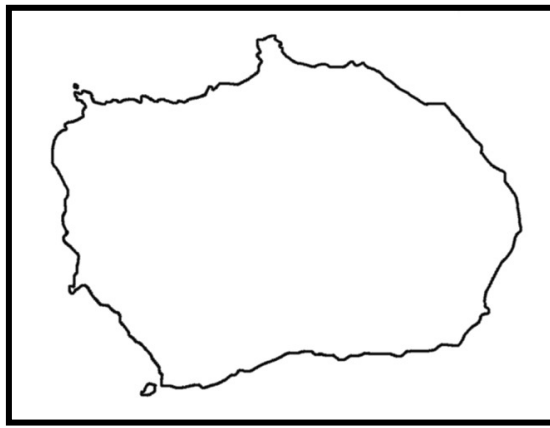


Figure 12: Country B

(4)

Question 8

The World map, Figure 13, shows thirteen important rivers.

- In the first two columns of the table below, name any **six** rivers and write their corresponding numbers. An example is given. (6)
- In the last column of the table, write the name of the continent in which each chosen river flows, as in the example given. (6)

Name of river	Number on map	Continent where river passes through
Zambesi	9	Africa



Figure 13 – Map of the World

Question 9

Study carefully the map (Fig. 14) on page 10 and then answer the following questions.

- a. Give the **four figure** Grid Reference for:

Fenton Barns	
Eldbottle Wood	
Lamb (island)	
Broad Wood	

(4)

- b. Give the **six figure** Grid Reference for:

a caravan site	
a windmill	

(4)

- c. The scale of the map is 1:50000 or 1cm represents $\frac{1}{2}$ km (0.5km). Use this scale to calculate the straight line distance from West Fenton (GR 498818) to Kingston (GR 542823).

_____ (2)

- d. Work out the compass directions from:

Highfield (GR 5483) to Oatfield (GR 5184)	
Longskelly rocks (GR 5086) to Black rocks (GR 4884)	
Williamstone fm (GR 5384) to Kingston fm (GR 5382)	
Information centre (GR 5585) to the viewpoint (GR 5584)	

(4)

- e. Draw the map symbols for the following:

bridge	
picnic site	

(2)

- f. If you walk from the chapel (GR 5381) to Highfield (GR 5483), would you be going uphill or downhill?

(1)

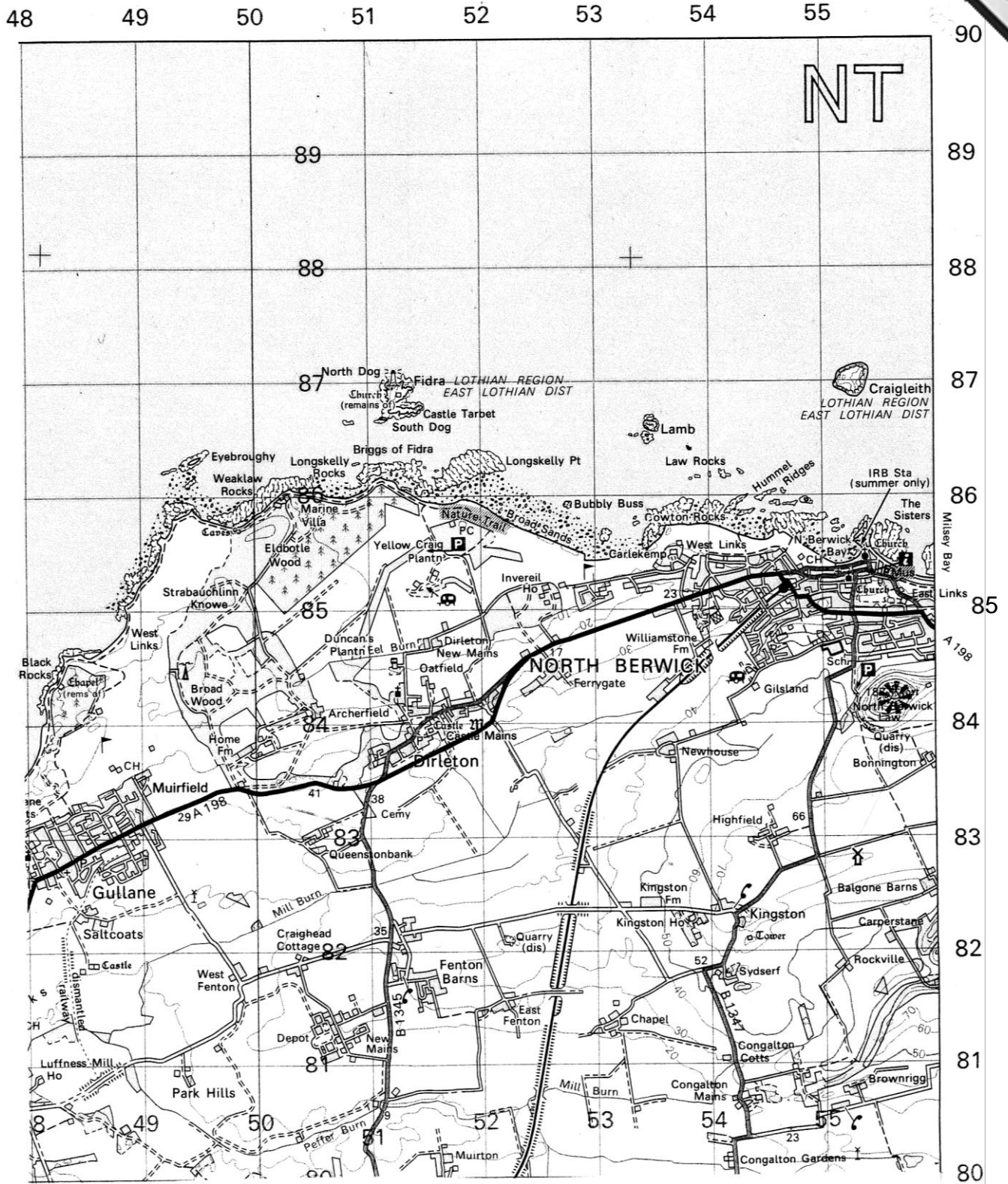


Figure 14