

# SECONDARY SCHOOL ANNUAL EXAMINATIONS 2004

Educational Assessment Unit – Education Division

FORM 3

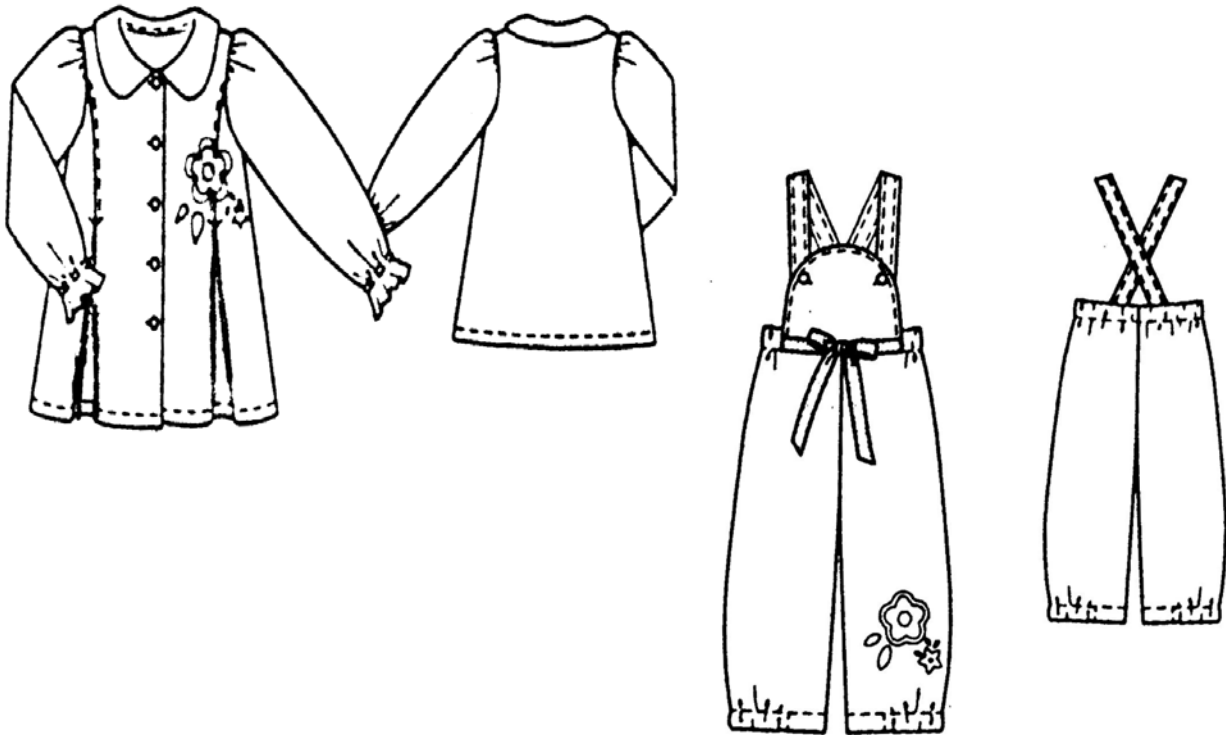
TEXTILES STUDIES

TIME: 1h 30min

Name: \_\_\_\_\_

Class: \_\_\_\_\_

1. Look at these garments and answer the following questions:



a. For whom would these garments be suitable?

\_\_\_\_\_ (1 mark)

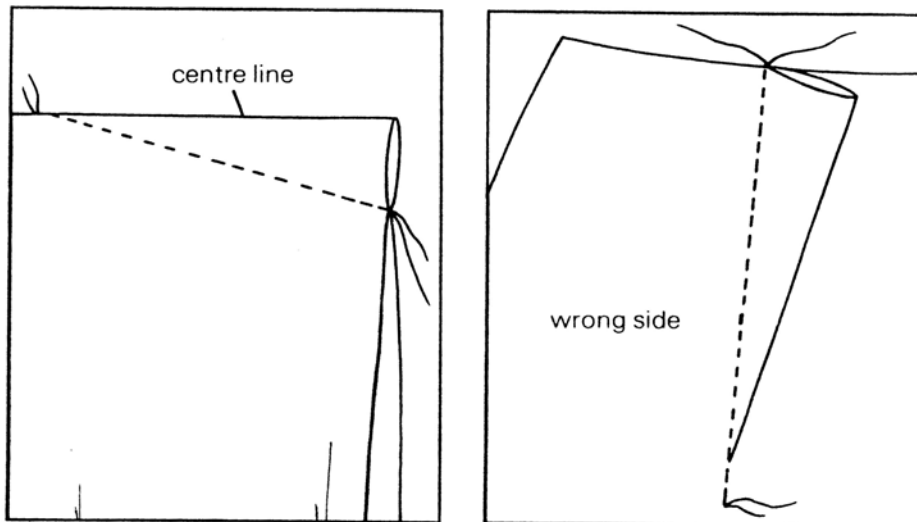
b. For which occasion can the blouse be worn?

\_\_\_\_\_ (1 mark)

c. On the diagrams (*question 1a*), name any **two** methods of disposing of fullness.  
ex – pleat on each side of blouse.

(i) \_\_\_\_\_ (ii) \_\_\_\_\_ (2 marks)

- d. Darts are also methods of disposing of fullness. With the help of these diagrams, explain how to stitch these darts.



- (i) \_\_\_\_\_
- (ii) \_\_\_\_\_
- (iii) \_\_\_\_\_
- (iv) \_\_\_\_\_

(4 marks)

- e. Draw **two** garments showing the use of darts. Show front and back views.

Garment 1		Garment 2	
Front	Back	Front	Back

(2, 2 marks)

- f. Name **one** occasion when you can wear these garments.

**Garment 1** \_\_\_\_\_

**Garment 2** \_\_\_\_\_

(1, 1 mark)

- g. List **four** Needlework tools required to make **one** of these garments. State the use of each tool.

**example**

**cutting out shears**

**to cut out fabric**

(i) \_\_\_\_\_

\_\_\_\_\_

(ii) \_\_\_\_\_

\_\_\_\_\_

(iii) \_\_\_\_\_

\_\_\_\_\_

(iv) \_\_\_\_\_

\_\_\_\_\_

(4, 4 marks)

- h. Buttons and Buttonholes are used on the garments in question 1a. Name **two** other types of fasteners and state where each can be used.

**Name** \_\_\_\_\_

**Name** \_\_\_\_\_

**Use** \_\_\_\_\_

**Use** \_\_\_\_\_

(2, 2 marks)

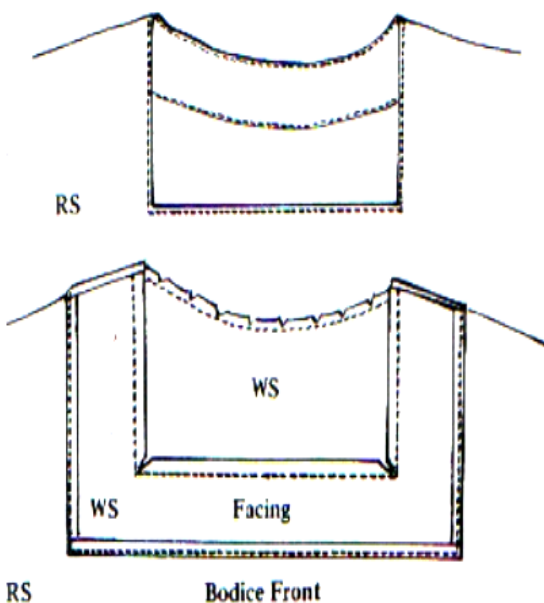
- i. Name and draw **one** type of collar.

**Name** \_\_\_\_\_

**Draw**

(1, 1 marks)

- 2a. Using the following diagrams, explain how to make and attach the facing to the neckline of a dress.



(i) \_\_\_\_\_

(ii) \_\_\_\_\_

(iii) \_\_\_\_\_

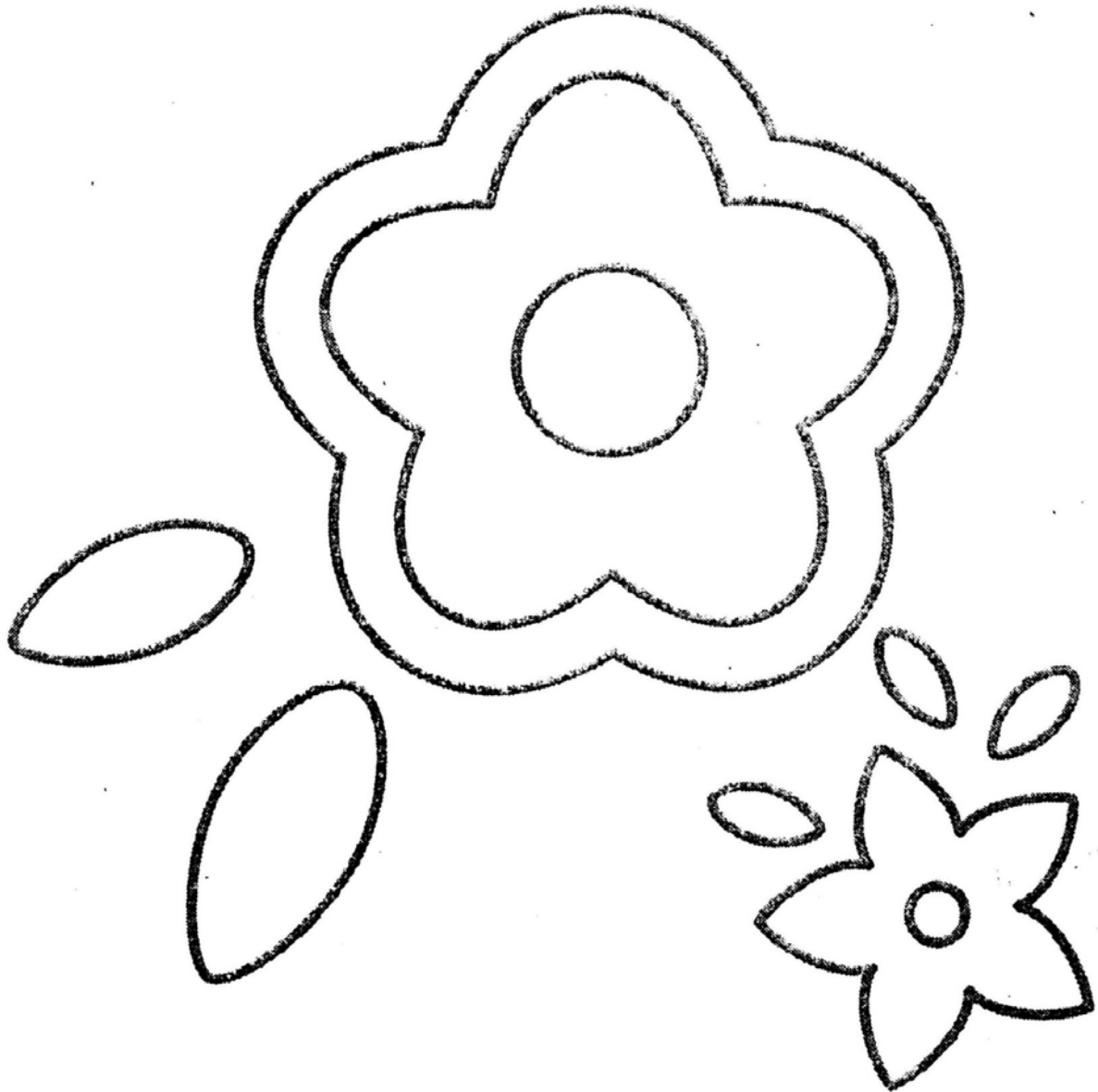
(iv) \_\_\_\_\_

(v) \_\_\_\_\_

(vi) \_\_\_\_\_

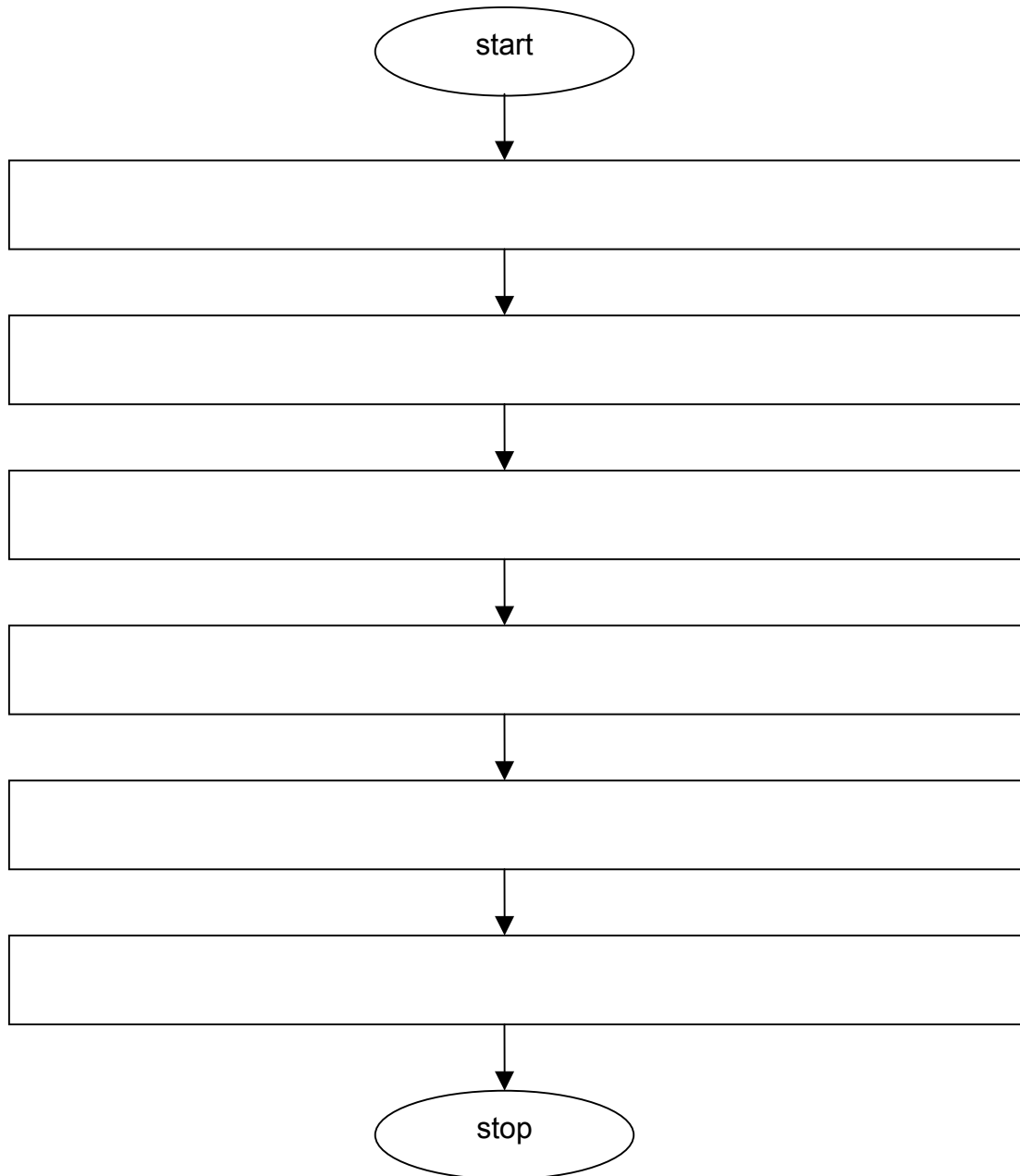
(6 marks)

- 3a. This design is used to decorate the garments in question 1a.  
On the diagram label:



- |  |              |
|--|--------------|
| (i) <b>three</b> colours   | (3 marks)    |
| (ii) <b>two</b> fabrics  | (2 marks)    |
| (iii) <b>four</b> embroidery stitches<br>(draw and name the stitches.) | (4, 4 marks) |
| (iv) <b>two</b> other decorations                                      | (2 marks)    |

b. Fill in this flow chart, explaining how to make up this design.



(6 marks)

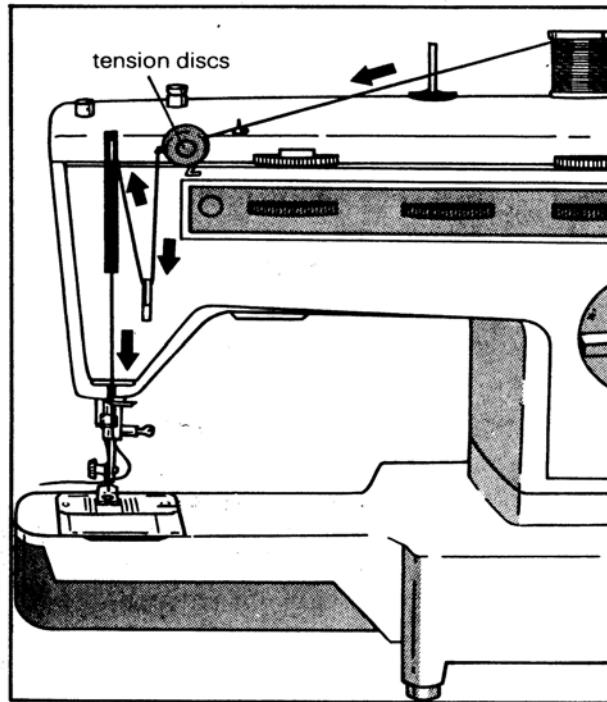
c. Suggest **two** items where this design can be used.

(i) \_\_\_\_\_

(ii) \_\_\_\_\_

(2 marks)

- 4a. Look at the diagram of this sewing machine. Write the order of threading the machine by completing these sentences.



- Place a spool of thread in the spool pin.
- Pass thread through \_\_\_\_\_ .
- Through \_\_\_\_\_ .
- Then through the \_\_\_\_\_ .
- And finally \_\_\_\_\_ . (4 marks)

- b. Name **three** ironing tools found in the home. State the use of each tool.

Name	Use
(i) _____	_____
(ii) _____	_____
(iii) _____	_____

(3, 3 marks)

- c. Write **five** points about the general care of electrical equipment so that they are safe in use.

- (i) \_\_\_\_\_
- (ii) \_\_\_\_\_
- (iii) \_\_\_\_\_
- (iv) \_\_\_\_\_
- (v) \_\_\_\_\_

(5 marks)

- 5a. The dungaree in question 1a is made of knitted fabric.  
Name **one** property of knitted fabric.

**Property** \_\_\_\_\_

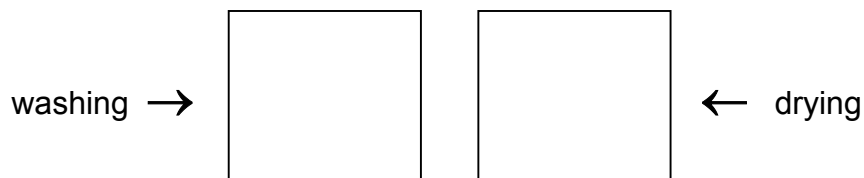
(1 mark)

- b. Many knitted items are made from wool. How can wool be washed to keep it in good condition?

- \_\_\_\_\_
- \_\_\_\_\_
- \_\_\_\_\_
- \_\_\_\_\_

(4 marks)

- c. Draw the care label symbols for washing and drying wool.



(2 marks)

- d. Wool shrinks but does not catch fire.  
Describe an experiment to find out if a woollen fabric has **one** of these properties.

**Name of Experiment** \_\_\_\_\_

(1 mark)

**Diagram**

**Method**

- \_\_\_\_\_
- \_\_\_\_\_
- \_\_\_\_\_
- \_\_\_\_\_

(2, 4 marks)

e. **Fill in using these words.**

cotton, weaving, linen, fraying, wool, silk, woven, stockings

- (i) Knitting is used to make ski pants and \_\_\_\_\_.
- (ii) Felt and vilene are non w \_\_\_\_\_ fabrics.
- (iii) We \_\_\_\_\_ is produced (made) on a machine called a loom.
- (iv) Woven fabric must be neatened by zig-zag to stop it from \_\_\_\_\_.
- (v) \_\_\_\_\_ is a fine fabric and is used to make evening dresses and scarfs.
- (vi) \_\_\_\_\_ is warm to wear and is used to make coats and jackets.
- (vii) \_\_\_\_\_ is cool to wear and is suitable for summer.
- (viii) \_\_\_\_\_ is strong and is used to make tablecloths and napkins.

(8 marks)

6a. Name and draw **two** accessories (example – handbags) fashionable this year.

**Name** \_\_\_\_\_

**Name** \_\_\_\_\_

**Draw**

**Draw**

(2, 2 marks)

b. Name **two** fashion designers you have read about. (*example Gucci*)

(i) \_\_\_\_\_

(ii) \_\_\_\_\_

(1 mark)

c. Write a sentence about this year's fashion trends.

\_\_\_\_\_  
\_\_\_\_\_

(1 mark)