

# SECONDARY SCHOOL ANNUAL EXAMINATIONS 2003

Educational Assessment Unit – Education Division

**FORM 3**

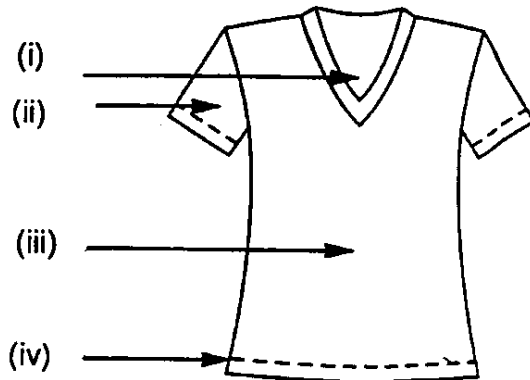
**TEXTILES STUDIES**

**TIME: 1h 30min**

Name: \_\_\_\_\_

Class: \_\_\_\_\_

1a. Name the style features marked with an arrow, on the summer top.



(i) \_\_\_\_\_

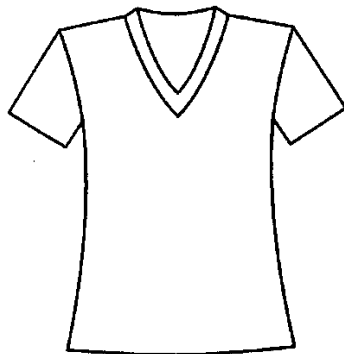
(ii) \_\_\_\_\_

(iii) \_\_\_\_\_

(iv) \_\_\_\_\_

(4 marks)

b.



On the sketch provided design a winter top with collar and long sleeves.

(2 marks)

c. List **four** measurements necessary to make the paper patterns for the top.

(i) \_\_\_\_\_

(ii) \_\_\_\_\_

(iii) \_\_\_\_\_

(iv) \_\_\_\_\_

(2 marks)

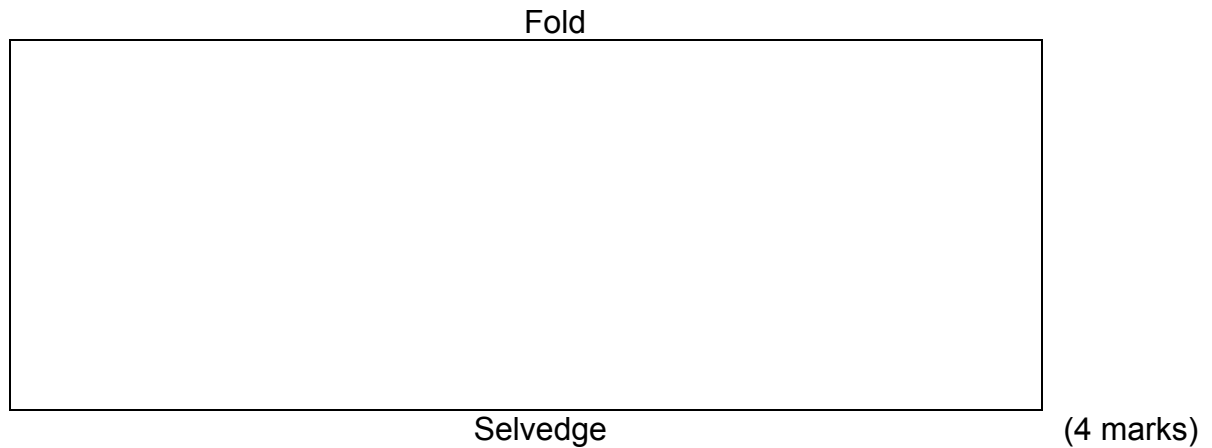
d. Suggest a fabric suitable to make the winter top. Give a reason for your choice.

(i) **Fabric** \_\_\_\_\_

(ii) **Reason** \_\_\_\_\_

(1,1 mark)

- e. Draw the cutting layout of the pattern pieces of the winter top on 1 metre wide woolen fabric.



- f. Name the seam used to sew the top.

**Name:** \_\_\_\_\_ (1 mark)

- g. Describe how to work this seam. (*Draw diagrams*)

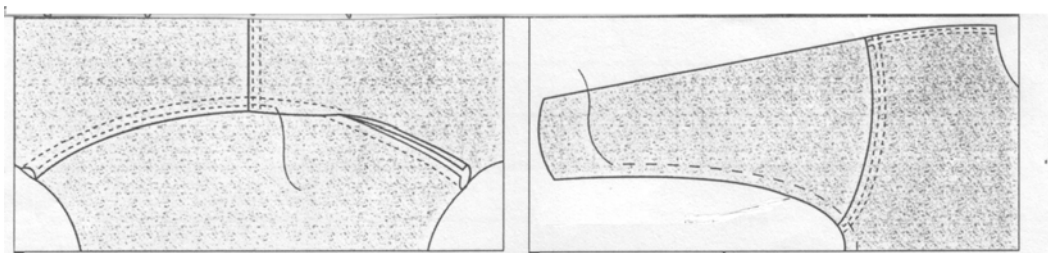
(i) \_\_\_\_\_

(ii) \_\_\_\_\_

(iii) \_\_\_\_\_

(2, 3 marks)

- h. The sleeve of the top is attached to the garment by the flat method.



Complete the instructions for sewing the sleeve, by using the diagram above.

(i) \_\_\_\_\_

(ii) \_\_\_\_\_

(iii) \_\_\_\_\_

(6 marks)

2a. Complete the following crossword using the following words.

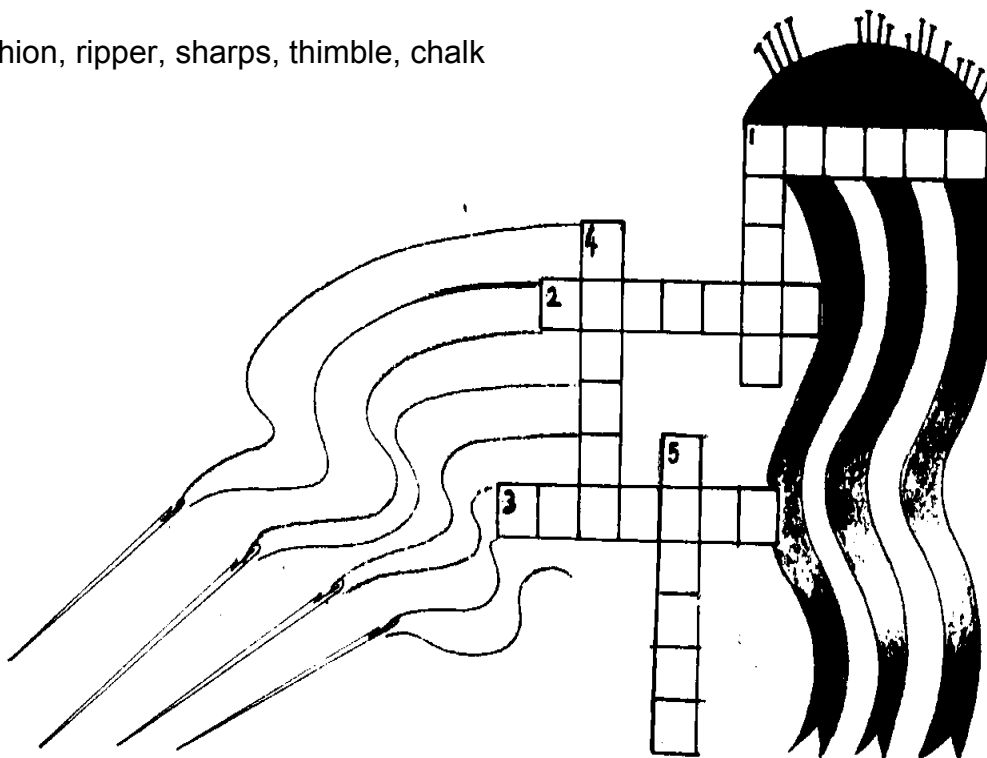
**Clues Across**

1. A type of needle which is used for embroidery
2. This will protect the sewing finger.
3. A suitable place to keep pins.

**Clued Down**

1. This is used for marking fabric.
4. The name of a medium sized needle.
5. This is used to cut open the buttonhole.

crewel, cushion, ripper, sharps, thimble, chalk



(6 marks)

b. State the correct tool for carrying out the following tasks.

- (i) Measuring fabric \_\_\_\_\_
- (ii) Sewing fabric together by hand \_\_\_\_\_

(2 marks)

c. The iron is an important piece of equipment while sewing. List **two** reasons why an iron is regarded as a sewing aid.

- (i) \_\_\_\_\_
- (ii) \_\_\_\_\_

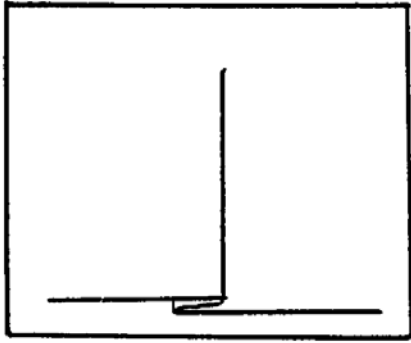
(2 marks)

d. State **two** rules for looking after a steam iron.

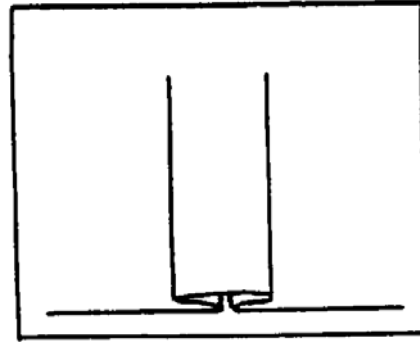
- (i) \_\_\_\_\_
- (ii) \_\_\_\_\_

(2 marks)

- 3a. Pleating is a way of controlling fullness.  
Name the pleats below.



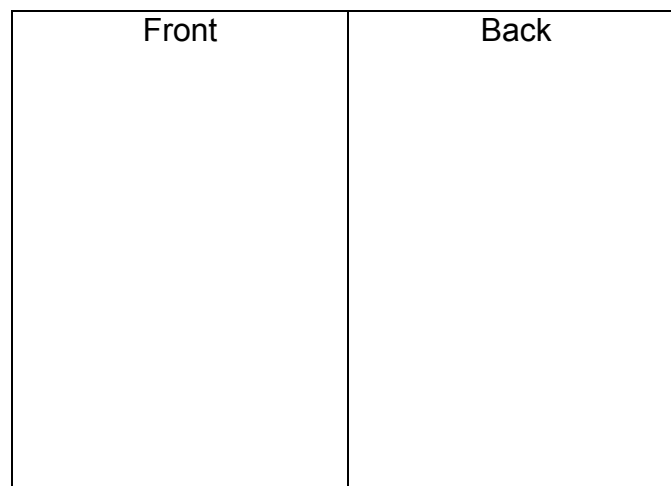
(i) \_\_\_\_\_



(ii) \_\_\_\_\_

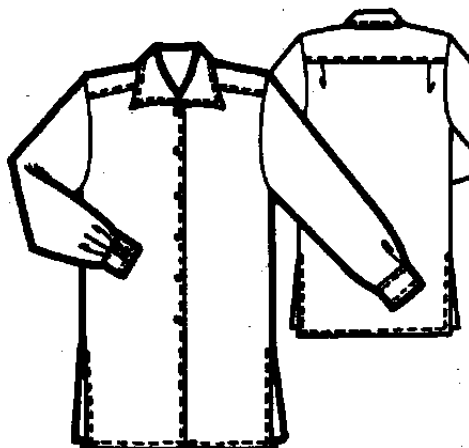
(2 marks)

- b. Design a skirt having **one** of these pleats to be worn with the winter top in question (1b).



(2 marks)

- c.



Name the fastenings used on the shirt.

**Fastening**

---



---

(2 marks)

- d. Sewing machine attachments (*feet*) were used to sew the fasteners in question (c). Name the fastener and sewing machine foot used.

**Fastener**

**Sewing Machine foot**

(i) \_\_\_\_\_

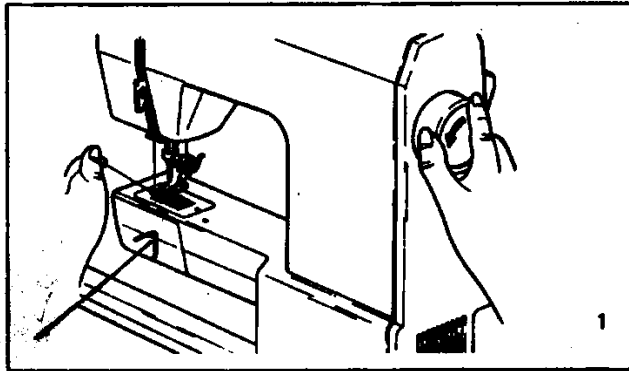
\_\_\_\_\_

(ii) \_\_\_\_\_

\_\_\_\_\_

(2, 2 marks)

e.



Name the sewing machine part marked with an arrow.

\_\_\_\_\_

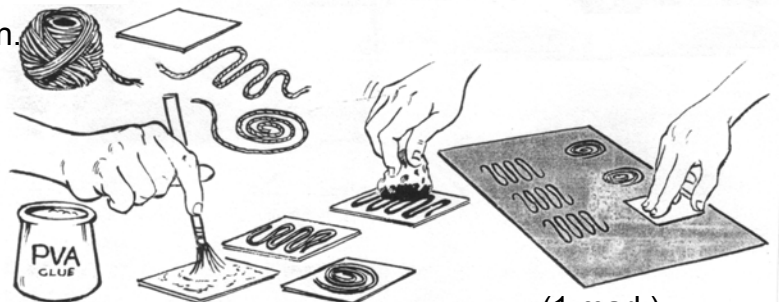
(1 mark)

Name its function (work)

\_\_\_\_\_

(1 mark)

- 4a. Name this method of fabric decoration.



Block \_\_\_\_\_

(1 mark)

- b. Use this method of fabric decoration to create an all over design or a border design for a light blue denim, bag.

- (i) Draw the bag (front and back) →

Front	Back

(2 marks)

- (ii) Draw the design for the bag in the box provided.

Draw your  
design  
here →



(4 marks)

(iii) List the materials (*things*) needed to make this decoration.

(i) glue

(ii) \_\_\_\_\_

(iii) \_\_\_\_\_

(iv) \_\_\_\_\_

(3 marks)

(iv) Name **two** things (*decorations*) you can add to the design to make it nicer.  
(ex. *adding sequins*)

(i) \_\_\_\_\_

(ii) \_\_\_\_\_

(2 marks)

(v) Name **three** colours used for the design.

(i) \_\_\_\_\_

(ii) \_\_\_\_\_

(iii) \_\_\_\_\_

(3 marks)

(vi) Complete this care label that was stitched to the bag, by filling in the symbols.

handwash






do not bleach

do not



tumble dry



warm iron

(4 marks)

5a. Denim is made from cotton, and is very absorbent. This experiment was carried out to find out if the fabric of the bag is absorbent.

Fill in the words which are missing.

dropper, tight, coloured, piece, surface



(i) Insert a \_\_\_\_\_ of fabric in embroidery frame and pull it

\_\_\_\_\_.

(ii) Fill a \_\_\_\_\_ with coloured water and drop the

\_\_\_\_\_ water on the surface of the fabric.

(iii) Record what happens on the \_\_\_\_\_ of the fabric.

(5 marks)

- b. This is a list of fabric properties. From the list underline **four** properties of cotton.

water repellent,

resistant to sunlight,

keeps the body cool,

keeps the body warm,

strong,

easy to care for,

resistant to wind,

crease resistant

(4 marks)

- c. Denim is a cotton fabric. It was used to make the bag in question 4 b. Name **two** garments (*clothes*) which you can make from denim.

(i) \_\_\_\_\_

(ii) \_\_\_\_\_

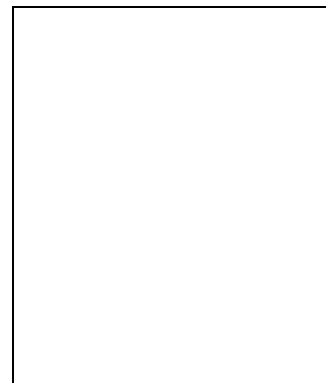
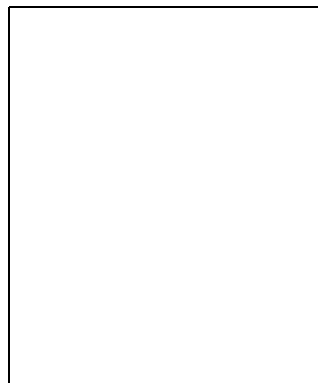
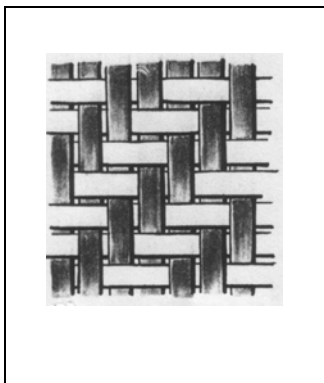
(2 marks)

- 6a. Denim is a woven twill fabric. The diagram shows the twill weave. Draw and name **two** other types of weaves.

Name

Name

Twill Weave



Draw

Draw

(2, 2 marks)

b. Raffia can be used for weaving. Name **two** other yarns (*threads*) that can be used.

(i) \_\_\_\_\_ (ii) \_\_\_\_\_  
(2 marks)

c. Complete this information on fabric construction.

**warp, weft, loom, weft.**

Weaving is done on a machine called a \_\_\_\_\_.

It consists of two yarns, the warp threads and the \_\_\_\_\_ threads.  
(2 marks)

Knitting is produced by interlocking loops of yarn. The two types of knitting are \_\_\_\_\_ and \_\_\_\_\_ knitting.  
(2 marks)

d. Put these words under the right heading

**stretches, frays, strong, ladders.**

<b>Woven fabric</b>	<b>Knitted fabric</b>
• _____	• _____
• _____	• _____

(2, 2 marks)

e. Fabrics can be woven, knitted or \_\_\_\_\_.  
(1 mark)

7a. What should the consumer think about when buying bags made from fabric?

(i) \_\_\_\_\_  
(ii) \_\_\_\_\_  
(iii) \_\_\_\_\_  
(3 marks)

b. Suggest **two** things you can make (*recycle*) from a denim bag when it is no longer needed.

(i) \_\_\_\_\_ (ii) \_\_\_\_\_  
(2 marks)