

SECONDARY SCHOOL ANNUAL EXAMINATIONS 2008
 DIRECTORATE FOR QUALITY AND STANDARDS IN EDUCATION
 Educational Assessment Unit

FORM 3

GEOGRAPHY GENERAL

TIME: 1h 30min

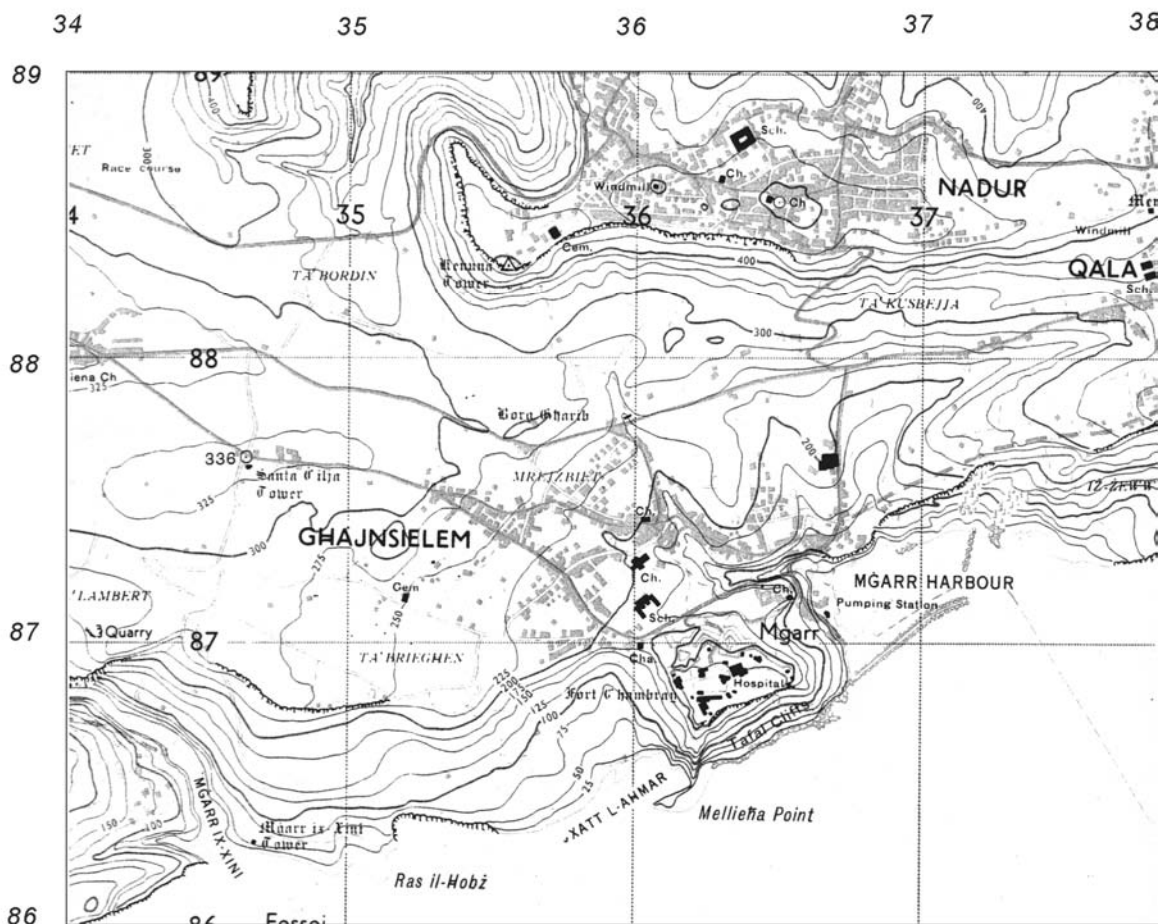
Name: _____

Class: _____

Work out all the exercises carefully.

Activity 1 - Map Skills

Examine carefully the given OS Map showing part of Gozo. Then work out the related exercise.



a. Fill in the missing details of this table. (6 marks)

Physical Features	Grid References	Human Features	Grid References
Headland			364869
	365867	School	
Harbour			365872

b. Use the given OS Map to list four important places that attract people who visit Nadur.

-
-
-
-

(4 marks)

c. Find the actual straight line distance between the school at Nadur and the school at Mġarr. The scale is 4cms is equal to 1km.

.....
..... (4 marks)

Activity 2 – Map of the World

a. Write the names of the following countries in their right region / continent.

*Canada, Egypt, France, China, Brazil, New Zealand, South Africa,
Democratic Republic of the Congo*

Regions	Countries
Mediterranean	1.
Tropical	2.
Europe	3.
Africa	4.
Asia	5.
North America	6.
South America	7.
Oceania	8.

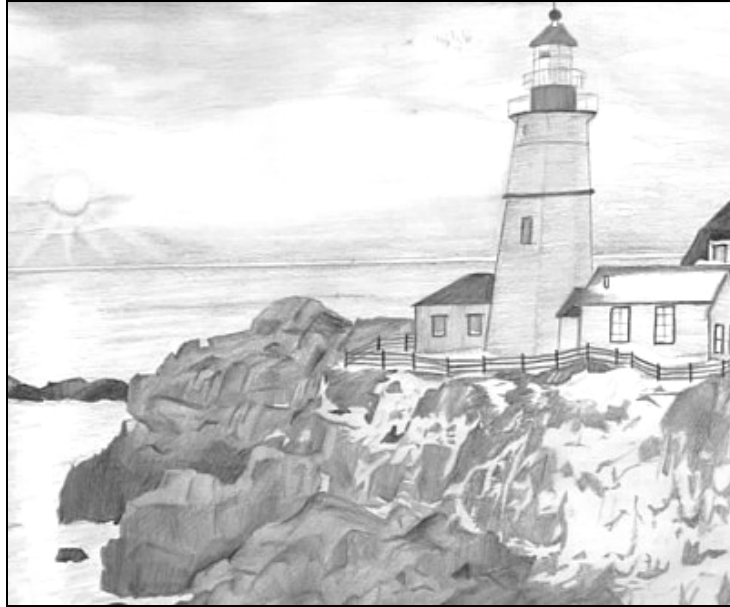
(8 marks)

b. Mark the numbers related to any six of the countries you listed in exercise 6 a in their right location on the given map of the world. (6 marks)



Activity 3 – What is Geography?

a. List three natural features and three human features that are shown by the following sketch:



Natural Features	Human Features

(6 marks)

b. How can the people living in the houses shown in the sketch look after their environment?
Give two points.

-
- (4 marks)

Activity 4 – Weather and Climate

a. Explain how rain is formed by filling in the blanks with the following terms.

Relief, cloud droplets, condenses, convectional, moisture, frontal rain, precipitate

Rain is formed when _____ from the oceans evaporates, rises and _____ into _____. When these grow larger they become raindrops and _____ from the sky. Air can be forced to rise in three different ways and this gives the three main types of rainfall. These are _____, _____ and _____.

(7 marks)

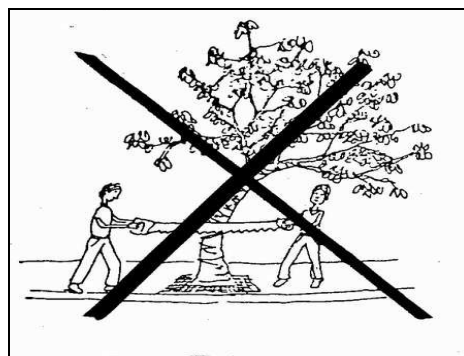
- b. Draw a **labelled diagram** to explain any one of the three types of rain – relief, convectional or frontal. Use pencil colours.



(6 marks)

Activity 5 – River Basins

- a. Continue the following sentences to explain why the cutting of trees can cause flooding.



1. Rain water will flow more quickly
2. The leaves of the trees no longer stop
3. The soil is eroded and washed into (3 marks)

b. Read the following details about flooding in Bangladesh:

Floods have caused havoc in Bangladesh throughout history, especially during recent years: 1987, 1988, and 1998. The most recent one occurred in 2007. According to government statistics 298 people died and a total of 10,211,780 people were badly affected by it. 58,866 houses were completely damaged by the flood up to 13 August 2007.

The floods in Bangladesh have always caused deaths and the destruction of houses.

Give four other effects caused by flooding.

-
-
-
- (4 marks)

c. Link the following five rivers with the country through which they flow:

Rivers		Countries
1. Volga		Brazil
2. Zambesi		USA
3. Amazon		China
4. Mississippi		Angola
5. Yangtse		Russia

(5 marks)

Activity 6 - Settlement

a. Give the main function of the following settlements. Choose from the given list.

Port, Holiday Resort, Industrial Town, Market Town

Description of Settlement	Main function
In the main square there are stalls selling a great number of items. Around this square there are banks, pubs, shops and offices.	
A large part of the land is taken up by factories. Close by there are the houses of the workers.	
This settlement is by the sea. Here a good number of ships bring in goods from overseas countries.	
A lot of people visit this settlement to relax and enjoy themselves by the beach.	

(4 marks)

- b. The photo shows an old English Village. Name three changes that have occurred in this village over the span of time.



-
-
-

(6 marks)

- c. Link the shopping areas with their right description.

1. Corner shop		These are located on both sides of main roads in the area close to the city centre. These shops tend to sell low order goods. More recent rows of low order shops have developed in suburbs to cater for the needs of the local residents.
2. Shopping streets		These are modern centres built on the edges of cities where land is vacant and cheaper. These hypermarkets have large car parks. People find all they need under one roof.
3. Shopping malls		These sell low order goods required daily by the people living nearby. The shops are small and so can only stock a limited amount of convenience goods. The variety of brands is also limited.
4. Out-of-town shopping centres		These are undercover walkways with shops selling high order goods. Consumers are protected from traffic and the weather. Consumers visit the malls for comparison or specialist goods. The malls are found within the CBD.

(8 marks)

Activity 7 - Transport

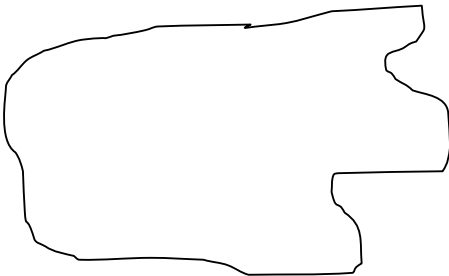
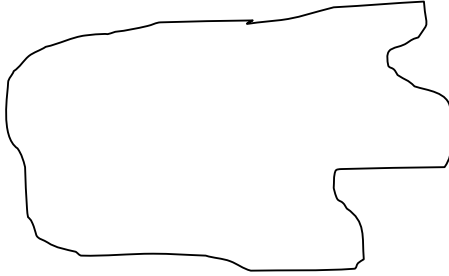
a. Give the right type of transport that was used for each situation.



<i>Ex. Many letters are sent from Malta to other countries.</i>	<i>Aeroplane</i>
1. Guests went to a wedding reception in nearby town.	
2. Student went to university. Parking here is always a problem.	
3. Office workers travelled from suburb to work in London.	
4. Crude oil transported to a refinery in another country.	

(8 marks)

b. Several routes (roads and railway lines) in an area which are linked together form a network.
Two imaginary islands have been drawn in the boxes below. Draw, using pencil colours, a high density network in Island A and a low density network in Island B.

	
Island A	Island B

(4 marks)

- c. Tick under the right column to show which areas are more likely to be linked by a good network of routes.

Description of area	High Density Network	Low Density Network
1. Area quite flat and easy to build on.		
2. Area always flooded		
3. Few settlements		
4. Settlements grew up long ago		
5. Mining area		

(5 marks)

- d. Explain why it is an advantage for us to have a high density network in the area where we live.

.....
.....

(2 marks)