

SECONDARY SCHOOL ANNUAL EXAMINATIONS 2007
Educational Assessment Unit – Education Division

FORM 4

GEOGRAPHY (GENERAL)

TIME: 1h 30 min

Name: _____ **Class:** _____

Answer all questions.

1. Study carefully the world map and then answer the following questions.

a. Name on the map itself the countries numbered **1** and **2**. Choose from:

China Italy Canada USA Brazil Mexico Russia.

(2 marks)

b. Thousands of people leave country **1** each year and go and live in country **2**.
What do we call the movement of people who move from home to live and work in another country? Tick (✓) the correct answer.

education	
migration	
urbanisation	
integration	

(1 mark)

c. Write on the map itself the name of continent **3**. Choose from:

Europe America Antarctica Australia Asia Africa

(1 mark)

d. Read the following statements about continent **3** marked on the map. In the space provided on the next page, write the statements that are true about continent **3**.

Continent 3 is a desert of ice and nobody lives permanently.
In summer temperatures reach 40°C.
Icebergs are found on the mountains of Continent 3.
The North Pole is found in Continent 3.
Penguins, seals and blue whales are some species that live close to continent 3.
Continent 3 is rich in minerals such as coal, iron ore and oil.

(3 marks)

- e. On the map of the world write down the name of the mountain range numbered **4**.
Choose from:

Atlas Himalayas Alps Apennines Pyrenees

(1 mark)

- f. In which continent are the mountains marked on the map by the number **4** found?

(1 mark)

- g. Select the facts that are true about mountains **4** and write them down in the table found on the next page.

Too cold for people to live.	Sparsely populated.	Rocks are broken down by onion-skin weathering.
Low-lying and flat.	A lot of factories are found on these mountains.	Mt.Etna is found here.
Freeze-thaw weathering breaks down rocks.	Mt.Everest is found in this range of mountains.	Poor soils not suitable for farming.
		Densely populated.

Mountain Range 4
•
•
•
•
•

(5 marks)

- h. Name the desert marked by the number **5** and say in which continent it is found.

Desert: _____ Continent: _____

(2 marks)

- i. Why do you think that very few people live in desert **5**?

(2 marks)

- j. Which of these countries are found in desert **5**? Underline the correct answers.

Libya Brazil Sweden England Algeria Japan

(2 marks)

- k. Name the country marked by the number **6**. Choose from:

Bangladesh Pakistan India Sri Lanka Australia

(2 marks)

- l. Which river passes from the northern part of country **6**. Tick (✓) the correct answer.

Yangtze	
Ganges	
Colorado	

(1 mark)

- m. Fill in the table below by writing the correct term that explains the description about rice farming in country 6. Choose from the following terms:

commercial tropical climate subsistence market gardening
labour-intensive silt drought flooding monsoon climate flooding

• Farmers grow enough food for their own needs and nothing is left over for sale.	
• Heavy rain during part of the year and dry during the rest of the year.	
• Heavy rain causes rivers to overflow the banks.	
• Very fertile soil on either side of the flood plain.	
• Large numbers of people work in the small fields without the use of machinery.	

(5 marks)

- n. Name the sea on the world map marked by the number 7. Choose from:

North Sea Mediterranean Sea Black Sea Red Sea Coral Sea
(1 mark)

- o. Choose the countries from the list below that have coastlines with sea 7. Write them in the table below.

England Kenya Bangladesh Netherlands China
Germany Mexico Finland Denmark Italy

Countries that have coastlines with Sea no.7.	
•	•
•	•

(4 marks)

- p. More than 55 million people live close to the shores of the sea marked by the number **7**. List five points to explain why this is so.

(5 marks)

- q. Sea marked **7** on the map is the dirtiest and the most polluted of all the seas in the world. Name two pollutants dumped into this sea and two effects that may result.

Pollutants	Effects
•	•
•	•

(4 marks)

- r. Name the country on the world map marked by the number **8**. Choose from:

South Africa Libya Kenya Morocco Egypt Malta

(1 mark)

- s. Circle the animal that is under threat in country 8 and explain why poachers hunt it.

turtles	bears	camels	giant pandas
penguins	elephants	whales	

(4 marks)

- t. What has been done in country **8** to stop the killing of the animal you marked in question s.

(2 marks)

- u. Many tourists come to country **8** to see wildlife in its natural habitat. What do we call this type of tourism.

(1 mark)

2. Look carefully at the drawing on the next page showing six types of primary activities.

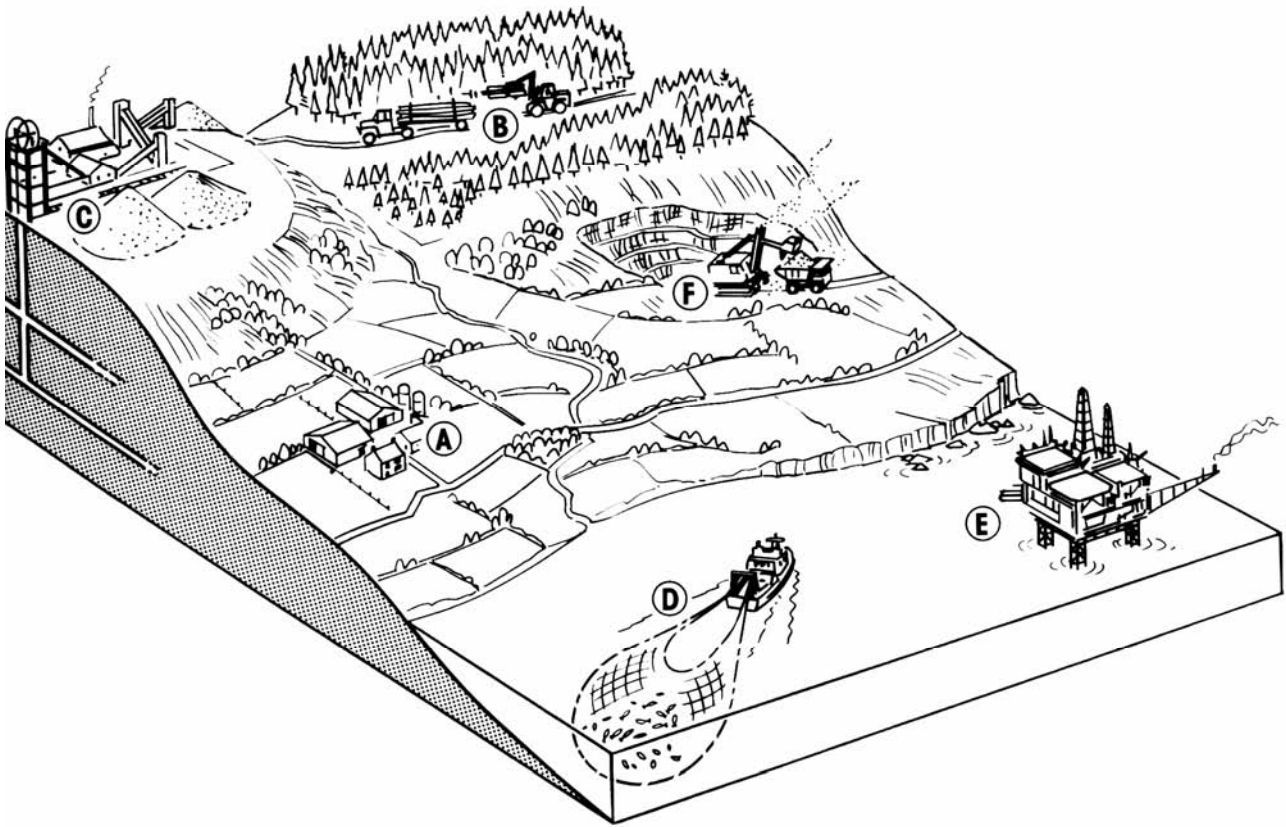
- a. Briefly explain the meaning of the term primary activity or industry.

(2 marks)

- b. Fill in the table by writing the name of the Primary activity in column 2 and the natural resource collected in column 3. The first one has been done for you.

Letter	Activity	Natural Resource
A	<i>Farming</i>	<i>Eg. Wheat, strawberries, potatoes.</i>
B		
C		
D		
E		
F		

(10 marks)



- c. Briefly explain how activities E and F on the diagram above, might damage and spoil the environment.

(6 marks)

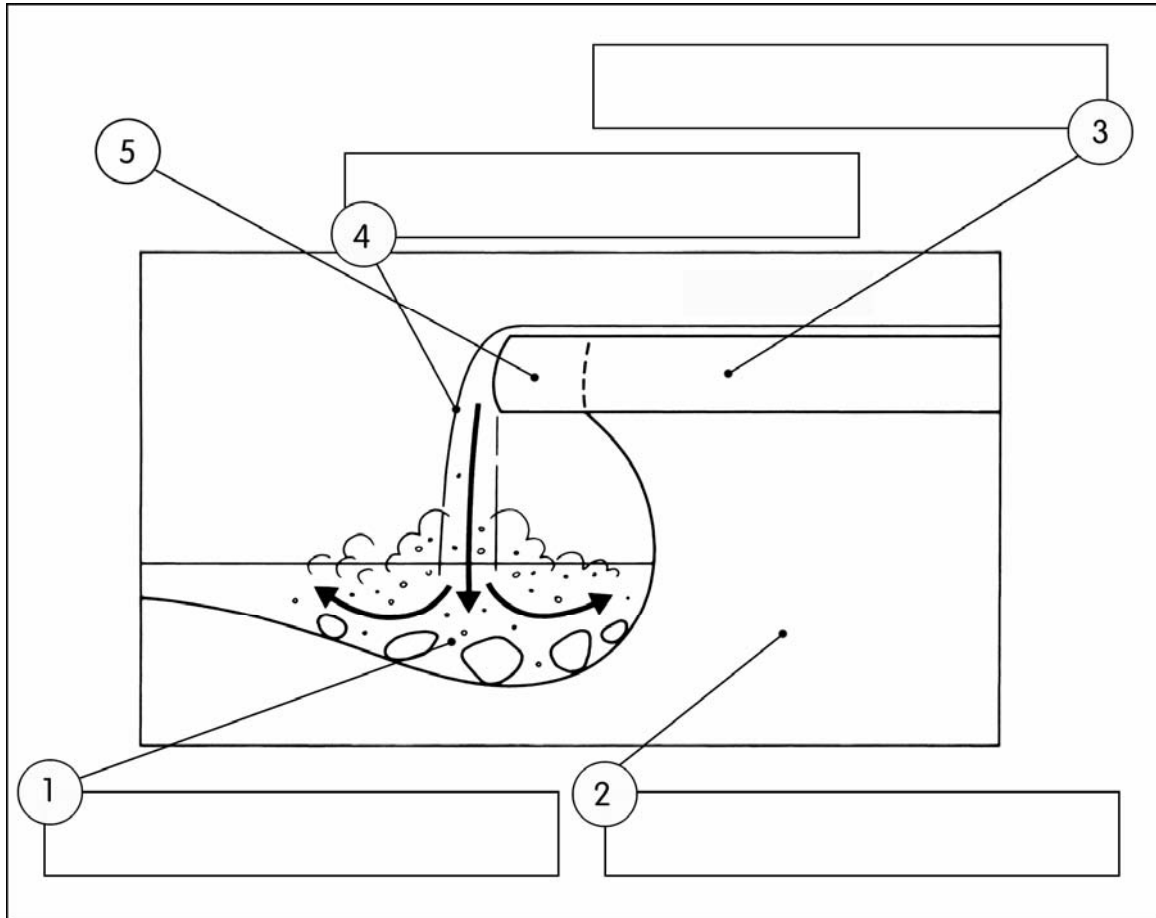
3. Look at the diagram below which shows a waterfall. Now label the diagram using the following terms.

River

Plunge Pool

Soft rock

Hard rock



(2 marks)

- b. Describe what might happen to (5) and to the waterfall in general as time passes by.

(6 marks)

4. "Natural resources can be divided into **renewable** and **non-renewable**. Non-renewable resources are usually cheaper to use but unfortunately cause **pollution**."

Explain what the words in **bold** mean.

(9 marks)

5. The photo shows one of the power stations used in Malta to generate electricity.



- a. Fill in the blanks using the list of words provided.

List of words				
turbine	power	oil	water	station

In Malta electricity is produced in a thermal _____.
_____. To produce electricity large amounts of
_____ are needed to heat _____,
and turn it into steam. Steam is then used to drive a _____
and this generates electricity.

(5 marks)

- b. Describe how the production of electricity at Dellimara power station can pollute the sea.

(2 marks)

- c. Name a gas that is released from the chimney of the power station.

_____ (2 marks)

- d. What harm are the gases given off from the power station causing?

(2 marks)

- e. What can be done to reduce the harm done to the environment from the release of these gases?

(4 marks)

