

SECONDARY SCHOOL ANNUAL EXAMINATIONS 2005
Educational Assessment Unit – Education Division

FORM 4

GEOGRAPHY (General)

Time: 1h 30min

NAME: _____

CLASS: _____

Work out ALL questions. All answers should be written on this paper.

1. a. Study the world map. Suitable words correspond to the numbers are shown on the map. Underline the correct answer.

- River **1** (Ganges, Nile, Amazon)
Continent **2** (Europe, Asia, Africa)
Country **3** (India, Japan, Russia)
Sea **4** (Mediterranean, Black, North)
Mount **5** (Everest, Etna, Kilimanjaro)
Country **6** (Egypt, USA, Algeria)
Waterfall **7** (Niagara, Angel, High Force)
Ocean **8** (Indian, Antarctic, Pacific)
State **9** (California, Alaska, Hawaii)
Desert **10** (Gobi, Arabian, Sahara)

(10 marks)

- b. Tick (3) the correct boxes.
Two countries which have their coastline with sea **4**.

Malta	
England	
Italy	
Russia	
Denmark	
USA	

(4 marks)

- c. Tick (3) the correct box.
A country found in desert **10**..

Libya	
Iraq	
Afghanistan	
Spain	

(2 marks)

- d. Tick (3) the correct box.
A crop grown on the banks of river **1**.

Oranges	
coconuts	
tomatoes	
rice	

(2 marks)

- e. Tick (3) the correct box.
Waterfall **7** is found on the border between the USA and

Canada	
Mexico	
Brazil	
China	

(2 marks)

- f. Tick (3) the correct box.
Many migrants cross the border to State **9** every day. They come mostly from

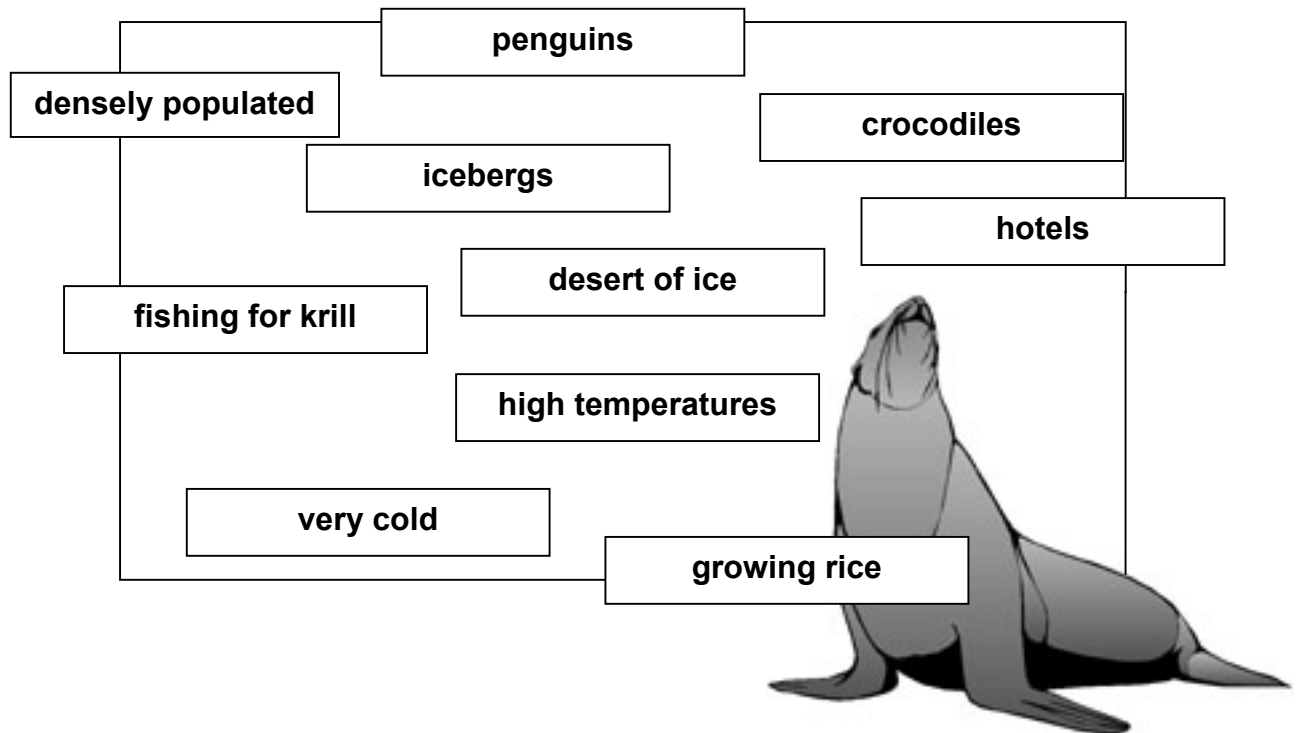
Peru	
Argentina	
Malta	
Mexico	

(2 marks)

- g. (i) On the map itself shade in pencil the continent of **Antarctica**. Do you think that this continent is crowded with people or nearly uninhabited (with few people).

(2 marks)

- (ii) Circle all the words that refer to the continent of Antarctica.



(5 marks)

- h. Elephants and crocodiles are **endangered species** in continent 2. They may become **extinct** if people are not very careful.

- (i) Explain what the words in **bold** mean.

(4 marks)

(ii) Explain why crocodiles and elephants are becoming rare.

(6 marks)

2. Fill in the table below by writing the geographical term that explains the description. Choose from the following terms:

Erosion

Chemical weathering

Biological weathering

Onion skin weathering

Transportation

Freeze-thaw weathering

	Description	Geographical term
1	Water gets into a crack in the rock. When the water freezes it expands. This breaks the rock.	
2	Rocks in the desert are heated and cooled many times. The outer layers of rock peel away.	
3	The roots of plants get into cracks. Roots grow and crack the rock apart.	
4	Rainwater containing acid dissolves some of the rock.	
5	The surface of the land is eaten away by rivers, ice, sea and wind.	
6	Water and wind carry rocks that have been broken up away.	

(12 marks)

3. (a) What is the difference between **Arable** and **Pastoral** farming?

(4 marks)

(b) Fill in the tables below by writing the needs of an arable farm and a pastoral farm. Choose your answers from the following list.

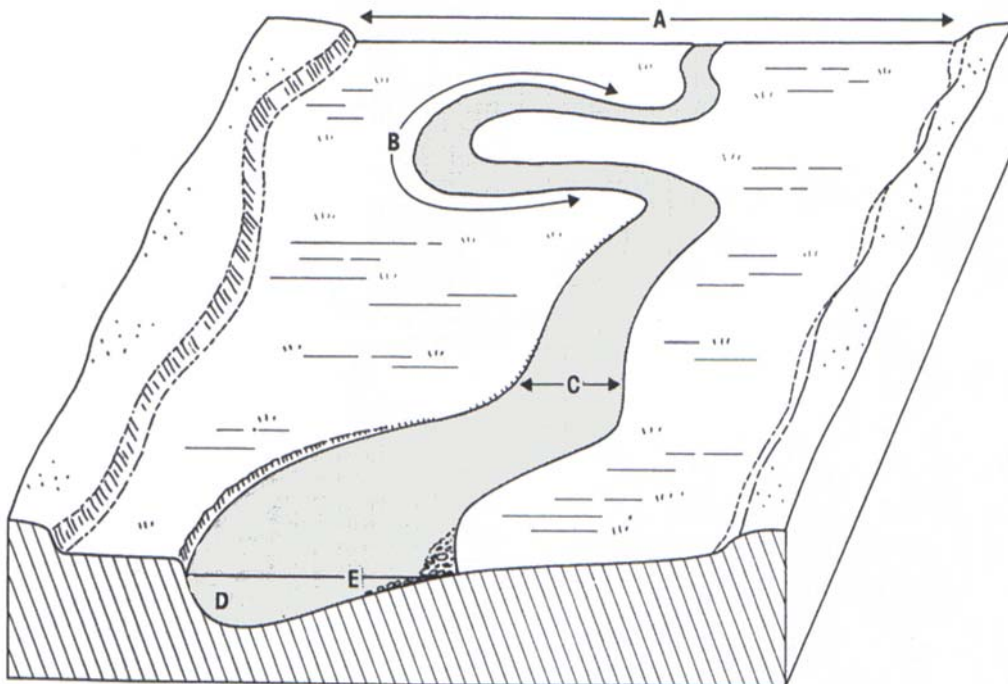
- ◆ Sunshine and high summer temperatures
- ◆ Some rain but not too much
- ◆ Modern milking machines
- ◆ Flat land for crops
- ◆ A lot of rain
- ◆ Deep and fertile soil
- ◆ Lorries to get milk quickly to the market
- ◆ Steep land for grazing

<i>Arable farm</i>	

<i>Pastoral farm</i>

(8 marks)

4. Study carefully the diagram showing a part of a river valley.



(a) Name the features found at:

A	
B	
C	

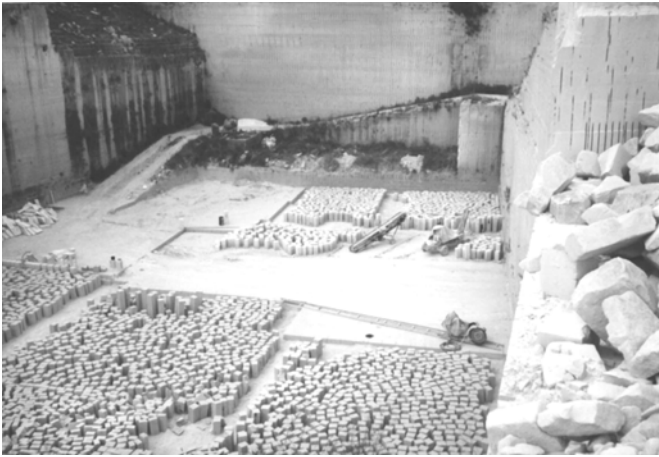
(6 marks)

(b) All the questions refer to either D or E on the diagram. Tick (4) the correct letter.

	D	E
Where is the channel deeper?		
Where is the river flowing slow?		
Where is the river cliff?		
Where is the river depositing?		
Where is the river eroding?		
Where is the water deepest?		

(6 marks)

5. Study carefully the two photos below and then answer each of the following.



(a) What type of economic activity do the two photos show?

(2 marks)

(b) Do you consider this type of activity as a primary, secondary or tertiary industry? Why?

(3 marks)

(c) Name the raw material obtained from the photos. For what purpose is it used?

(4 marks)

- (d) Write in detail how the collection of raw materials shown in the photos can harm the landscape, affect people and wildlife.

(8 marks)

- (e) Describe how the landscape shown in the photos can be improved and made less dangerous once the economic activity involved stops.

(8marks)

End of Paper

