

FOR OFFICIAL USE

--	--	--	--	--	--

X231/701

Total
Mark

--

NATIONAL
QUALIFICATIONS
2008

FRIDAY, 23 MAY
11.00 AM – 12.00 NOON

MUSIC
ADVANCED HIGHER

Fill in these boxes and read what is printed below.

Full name of centre

--

Town

--

Forename(s)

--

Surname

--

Date of birth

Day Month Year

--	--	--	--	--	--	--	--

Scottish candidate number

--	--	--	--	--	--	--	--	--	--

Number of seat

--

The Examination which you are about to sit is based upon a recording of excerpts of music. The text of the questions you will hear is to be found in this answer book and you can follow what the speaker says. Listen carefully to the questions and to the musical excerpts upon which the questions are set.

The number of times each excerpt is played is indicated in each question.

Answer all questions.

Write your answers clearly, in ink, in the spaces provided.

Before leaving the examination room you must give this book to the invigilator. If you do not, you may lose all the marks for this paper.



Question 1

Read through the list of features before hearing the excerpt.

Tick **four** features which are present in the music. You will hear the music **twice** with a pause of 10 seconds between playings and a pause of 15 seconds before the next question starts.

You now have 15 seconds to read through the list.

- | | |
|--|-------------------------------------|
| <input type="checkbox"/> Melismatic word setting | <input type="checkbox"/> Baroque |
| <input type="checkbox"/> Anthem | <input type="checkbox"/> Leitmotiv |
| <input type="checkbox"/> Renaissance | <input type="checkbox"/> A cappella |
| <input type="checkbox"/> Coloratura | <input type="checkbox"/> Chorale |
| <input type="checkbox"/> Chaconne | <input type="checkbox"/> Mass |

Here is the music for the first time.
Here is the music for the second time.

Total marks Question 1: (4)

Question 2

Listen to the following piece of music and, in the spaces provided, write the concepts which identify:

- (i) the type of large scale work from which the excerpt is taken;
- (ii) the style/form of the excerpt.

Here is the music.

- (i) _____
- (ii) _____

Total marks Question 2: (1)

[Turn over for Question 3 on *Page four*

Question 3

This question is based on an excerpt from a piece of film music written by the Scottish composer, Patrick Doyle.

Listen to the excerpt and follow the guide score which is printed on the next page.

You now have 2 minutes to read through the questions.

- (a) (i) In the box below name the key at the start of the excerpt.

- (ii) The music changes key a number of times. In the box below name the key at bar 21.

1

- (b) At one point the score does not match what is played. Make a change to two consecutive notes so that the rhythm is correctly notated.

1

- (c) What is the total value, in beats, of the last 3 notes in bar 7?

1

- (d) What feature of the harmony causes a discord at the start of bar 8? Write your answer in the box provided.

1

- (e) What type of cadence do you hear over bars 22 and 23? Write your answer in the box above the stave.

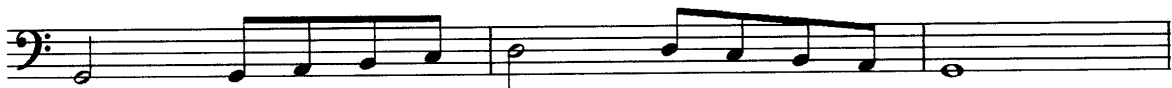
1

- (f) Write 'C' above the bar where you first hear a cymbal roll.

1

- (g) Write 'B' above the bar where this section of the bass line begins.

1



- (h) Describe the chords used in bar 9 and in the first 2 beats of bar 10 in terms of the step of the scale on which each is based, and as root position or first or second inversion (for example IVb). Write your answers in the boxes under the stave.

1

Question 3 (continued)

You will now hear the music three more times, with 15 seconds between playings and a pause of 1 minute before the next question begins.

Here is the music for the first time.

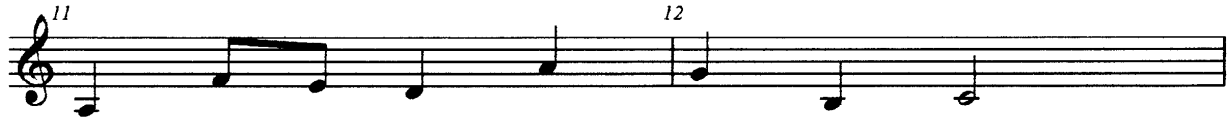
Here is the music for the second time.

Here is the music for the third time.

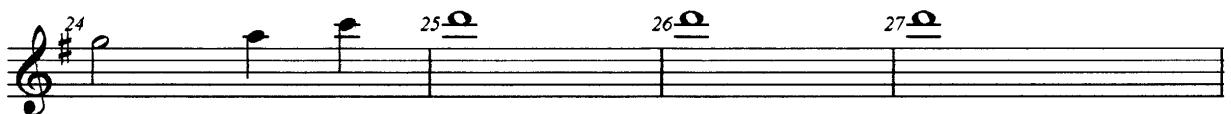
Hogwart's Hymn



Chords:



Cadence:



Total marks Question 3: (8)

Question 4

In this question you will hear music by Beethoven.

A musical map of the excerpt has been laid out on *Page seven*.

You will see that further information is required and should be inserted in the highlighted areas **1 to 5**.

There will now be a pause of 20 seconds to allow you to read through this question.

The music will be played **three times** with a pause of 15 seconds between playings. You will then have a further 20 seconds to complete your answer.

In the first two playings a voice will guide you through the music. The voice will be heard immediately before the music for each of the highlighted areas is heard. It is not included in the third playing.

Here is the music for the first time.

Here is the music for the second time.

Here is the music for the third time.

Total marks Question 4: (5)

Question 4 (continued)

Excerpt opens

The lower strings play a _____ scale.

The piano then plays a broken _____ chord.

1

The _____ and _____ voices sing a passage based almost entirely on chords _____ and _____

2

_____ and _____ sing.

The prominent ornament in the piano part is a(n) _____

3

The structure/texture of the choral singing is _____

4

The Italian term to describe the changing tempo is _____

The excerpt closes on a(n) _____ cadence.

5

Excerpt ends

1 mark

1 mark

1 mark

1 mark

1 mark

Question 5

You are asked to compare two excerpts of music. In the column on the left of the answer pages musical concepts are listed. You should select from that column features which are present in the excerpts and identify them with a tick in the appropriate columns (**EXCERPT 1, EXCERPT 2, COMMON TO BOTH EXCERPTS**). The number of marks listed at the foot of each column in **[GRID 2] final answer** indicates the maximum number of concepts to be identified in that column; **marks will be deducted if you exceed that number.**

Both excerpts will be played **three** times, with a pause of 10 seconds between playings.

As you listen, tick the musical concepts used by the composer under the headings given in **[GRID 1]**. **This grid is for rough work and will not be marked.**

After the three playings of the music you will be given **two minutes** to copy/re-arrange your answers in **[GRID 2]**.

A warning tone will sound 30 seconds before the start of the next question.

You now have **one minute** to read through the question.

Here is excerpt 1 for the first time. **Remember to write in [GRID 1].**

Here is excerpt 2 for the first time.

Here is excerpt 1 for the second time.

Here is excerpt 2 for the second time.

Here is excerpt 1 for the third time.

Here is excerpt 2 for the third time.

You now have **2 minutes** to complete your answers in **[GRID 2]**.

Remember that the total number of concepts for each column is indicated by the mark at the foot of that column.

[Question 5—Grid 1 and 2 are on fold-out Pages nine and ten

Question 5 (continued)

[GRID 1] ROUGH WORKING ONLY

CONCEPTS	EXCERPT 1 ONLY	EXCERPT 2 ONLY	COMMON TO BOTH EXCERPTS
MELODIC and HARMONIC			
Imitation			
Turn			
Dominant 7th			
Plagal cadence			
RHYTHMIC			
Anacrusis			
Augmentation			
Diminution			
Hemiola			
STRUCTURAL			
Inverted pedal			
Minuet			
Ritornello			
Scherzo			
STYLES/FORMS			
Classical			
Romantic			
Late Romantic			
Neo-classical			

Question 5 (continued)

[GRID 2] FINAL ANSWER

CONCEPTS	EXCERPT 1 ONLY	EXCERPT 2 ONLY	COMMON TO BOTH EXCERPTS
MELODIC and HARMONIC			
Imitation			
Turn			
Dominant 7th			
Plagal cadence			
RHYTHMIC			
Anacrusis			
Augmentation			
Diminution			
Hemiola			
STRUCTURAL			
Inverted pedal			
Minuet			
Ritornello			
Scherzo			
STYLES/FORMS			
Classical			
Romantic			
Late Romantic			
Neo-classical			
	1 mark	2 marks	5 marks

Total marks Question 5: (8)

[Question 6 starts on Page twelve

[OPEN OUT]

Question 6

Read through the list of features before hearing the excerpt.

Tick **four** features which are present in the music. You will hear the music **twice** with a pause of 10 seconds between playings and a pause of 15 seconds before the next question starts.

You now have 15 seconds to read through the list of features.

- | | |
|---|--|
| <input type="checkbox"/> Major tonality | <input type="checkbox"/> Diminution |
| <input type="checkbox"/> Jazz funk | <input type="checkbox"/> Melismatic word setting |
| <input type="checkbox"/> Time changes | <input type="checkbox"/> Chromatic |
| <input type="checkbox"/> Glockenspiel | <input type="checkbox"/> Tremolando |
| <input type="checkbox"/> Acciaccatura | <input type="checkbox"/> Lied |

Here is the music for the first time.
Here is the music for the second time.

Total marks Question 6: (4)

[Turn over for Question 7 on *Page fourteen*

Question 7

In this question you are asked to comment on a musical excerpt in terms of style, composition and performance.

Write a brief description of the excerpt, identifying its distinctive features and using appropriate concepts to describe what you hear.

You will hear the music **three** times with a pause of 15 seconds between each playing and a pause of **four** minutes to re-write your answer on the next page.

A warning tone will sound 30 seconds before the start of the next question.

Here is the music for the first time.

Here is the music for the second time.

Here is the music for the third time.

The lines on this page should be used for rough working and will not be marked.

The description in your final answer should be written in continuous prose (not a list of concepts). Your final answer should be written on the lines provided on the next page.

[ROUGH WORKING]

Question 8

In this question you are asked to comment on a musical excerpt in terms of style, composition and performance.

Write a brief description of the excerpt, identifying its distinctive features and using appropriate concepts to describe what you hear.

You will hear the music **three** times with a pause of 15 seconds between each playing and a pause of **four** minutes to re-write your answer on the next page.

A warning tone will sound 30 seconds before the end of the question paper.

Here is the music for the first time.

Here is the music for the second time.

Here is the music for the third time.

The lines on this page should be used for rough working and will not be marked.

The description in your final answer should be written in continuous prose (not a list of concepts). Your final answer should be written on the lines provided on the next page.

[ROUGH WORKING]

ACKNOWLEDGEMENTS

Question 3—Graphical Music from *Hogwarts' Hymn (Film Music)* by Patrick Doyle. Published by Warner Chappell Music Ltd. Reproduced by kind permission of Warner Chappell Music Ltd.