



**2012 Music**

**Advanced Higher**

**Finalised Marking Instructions**

© Scottish Qualifications Authority 2012

The information in this publication may be reproduced to support SQA qualifications only on a non-commercial basis. If it is to be used for any other purposes written permission must be obtained from SQA's NQ Delivery: Exam Operations.

Where the publication includes materials from sources other than SQA (secondary copyright), this material should only be reproduced for the purposes of examination or assessment. If it needs to be reproduced for any other purpose it is the centre's responsibility to obtain the necessary copyright clearance. SQA's NQ Delivery: Exam Operations may be able to direct you to the secondary sources.

These Marking Instructions have been prepared by Examination Teams for use by SQA Appointed Markers when marking External Course Assessments. This publication must not be reproduced for commercial or trade purposes.

## QUESTION 1

Marks

Tick **four** features which are present in the music. You will hear the music **twice** with a pause of 10 seconds between playings and a pause of 15 seconds before the next question starts.

You now have 15 seconds to read through the list of features.

- |                                     |          |                                     |                    |
|-------------------------------------|----------|-------------------------------------|--------------------|
| <input checked="" type="checkbox"/> | Recorder | <input type="checkbox"/>            | Tonal answer       |
| <input type="checkbox"/>            | 4<br>4   | <input checked="" type="checkbox"/> | Tierce de Picardie |
| <input type="checkbox"/>            | Ballett  | <input checked="" type="checkbox"/> | Galliard           |
| <input checked="" type="checkbox"/> | Binary   | <input type="checkbox"/>            | Time changes       |
| <input type="checkbox"/>            | Chaconne | <input type="checkbox"/>            | Motet              |

Here is the music for the first time.  
Here is the music for the second time.

Total marks Question 1: (4)

## QUESTION 2

Marks

Tick **four** features which are present in the music. You will hear the music **twice** with a pause of 10 seconds between playings and a pause of 15 seconds before the next question starts.

You now have 15 seconds to read through the list of features.

- |                                     |                 |                                     |                  |
|-------------------------------------|-----------------|-------------------------------------|------------------|
| <input checked="" type="checkbox"/> | Mordent         | <input type="checkbox"/>            | Chorale prelude  |
| <input type="checkbox"/>            | Ripieno         | <input type="checkbox"/>            | Late Romantic    |
| <input checked="" type="checkbox"/> | Diminished 7th  | <input type="checkbox"/>            | Irregular metres |
| <input type="checkbox"/>            | Countersubject  | <input checked="" type="checkbox"/> | Sonata           |
| <input checked="" type="checkbox"/> | Contrary motion | <input type="checkbox"/>            | Augmentation     |

Here is the music for the first time.  
Here is the music for the second time.

Total marks Question 2: (4)

### QUESTION 3

Marks

You are asked to compare two excerpts of music. In the column on the left of the answer pages musical concepts are listed. You should select from that column features which are present in the excerpts and identify them with a tick in the appropriate columns (**EXCERPT 1, EXCERPT 2, COMMON TO BOTH EXCERPTS**). The number of marks listed at the foot of each column in **[GRID 2] FINAL ANSWER** indicates the maximum number of concepts to be identified in each column; **marks will be deducted if you exceed that number**.

Both excerpts will be played **three** times, with a pause of 10 seconds between playings.

As you listen, tick the musical concepts used by the composer under the headings given in **[GRID 1]**. The number of ticks required for each excerpt is indicated at the foot of each column. **This grid is for rough work and will not be marked.**

After the three playings of the music you will be given **two minutes** to copy/re-arrange your answers in **[GRID 2]** and to select and tick the concepts common to both excerpts in the **COMMON** column. **Remember that the total number of concepts for each column is indicated by the marks at the foot of each column.**

You now have **one minute** to read through the question.

Here is Excerpt 1 for the first time. **Remember to write in [GRID 1].**  
Here is Excerpt 2 for the first time.

Here is Excerpt 1 for the second time.  
Here is Excerpt 2 for the second time.

Here is Excerpt 1 for the third time.  
Here is Excerpt 2 for the third time.

You now have **two minutes** to complete your answers in **[GRID 2]**.

A warning tone will sound 30 seconds before the start of the next question.

**[Question 3 – Grid 2 is on Page five]**

Total marks Question 3: (8)

**Question 3 (continued)**  
**[GRID 2] FINAL ANSWER**

CONCEPTS	EXCERPT 1	EXCERPT 2	COMMON TO BOTH EXCERPTS
<b>MELODIC/HARMONIC</b>			
Acciaccatura			
Appoggiatura			✓
Augmented chord			
Turn		✓	
<b>STRUCTURAL</b>			
Basso continuo	✓		
Leitmotiv			
Obbligato			✓
Retrograde			
<b>TIMBRE</b>			
Clarinet		✓	
Harmonics			
Sprechgesang			
<b>STYLES/FORMS</b>			
Aria			✓
Classical		✓	
Lied			
Recitative	✓		
	<b>2 MARKS</b>	<b>3 MARKS</b>	<b>3 MARKS</b>

**Total marks Question 3: (8)**

**QUESTION 4**

*Marks*

Listen to the beginning of a piece of programme music called 'Fun Fair' and, in the space provided, write the concept which describes this musical style.

Here is the music.

**Musique concrète**

**Total marks Question 4: (1)**

## QUESTION 5

Marks

This question is based on an excerpt from a song written by Freddie Mercury.

Listen to the excerpt and follow the guide score which is printed on the next page.

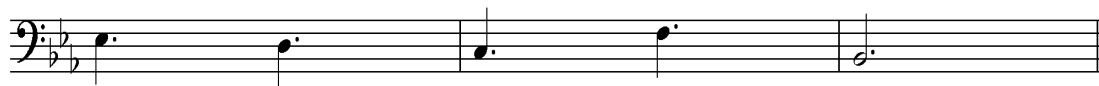
You now have **2 minutes** to read through the questions.

**You should write all of your answers on the next page.**

- (a) Insert the time signature at the appropriate place in the guide score. 1
- (b) The music changes to a new key at bar 18. Write the name of the new key above bar 18. 1
- (c) Complete the description of the chords in bars 35-37, indicating the chord name and whether it is in root position or first or second inversion. The first and last chords have been described for you. 1
- (d) Make a change to one note in bar 14 so that the pitch is correctly notated. 1
- (e) Write **'V'** above the bar where the backing vocals first enter. 1
- (f) Insert  $\frown \bigcirc \smile$  above an interval of an octave in the melody. 1
- (g) Write **'G'** above the bar where this guitar line begins. 1



- (h) Write **'B'** above the bar where this bass line begins. 1



You will now hear the music three more times, with 20 seconds between playings and a pause of 2 minutes before the next question begins.

Here is the music for the first time.  
Here is the music for the second time.  
Here is the music for the third time.

# We Are the Champions

6/8 time signature. The score consists of a single melodic line in treble clef. Measure numbers 1 through 34 are indicated above the notes. Chord boxes are placed above the staff at measures 9 (G), 13 (B), 15 (V), 18 (Key: F major), 35 (F minor, root position), 36 (Bb Major, 2nd inversion), and 37 (F minor, root position). An 'O' symbol is placed above the staff at measure 15 and measure 28. The piece concludes with a double bar line at measure 34.

Total marks Question 5: (8)



## QUESTION 6

Marks

In this question you will hear an excerpt from a symphony.

A musical map of the excerpt has been laid out on *Page ten*.

You will see that further information is required and should be inserted in the highlighted areas **1 to 5**.

There will now be a pause of 20 seconds to allow you to read through the question.

The music will be played **three times** with a pause of 15 seconds between playings. You will then have a further 20 seconds to complete your answer.

In the first two playings a voice will guide you through the music. The voice will be heard immediately before the music for each of the highlighted areas is heard. It is not included in the third playing.

Here is the music for the first time.

Here is the music for the second time.

Here is the music for the third time.

Total marks Question 6: (5)

**QUESTION 6 (continued)**  
**Excerpt opens**

There are 4 beats in the bar. Every phrase begins on the 3rd beat of the bar.

1

The repeated leap in the melody forms the interval of a(n) Octave.

2

This section finishes on a(n) perfect cadence in a major key.

3

The oboe plays a(n) countermelody while the bassoon plays a(n) pedal.

4

The style of the excerpt is Neo-classical.

5

<b>1</b> (1 mark)	<b>2</b> (1 mark)	<b>3</b> (1 mark)	<b>4</b> (1 mark)	<b>5</b> (1 mark)
-------------------	-------------------	-------------------	-------------------	-------------------

## QUESTION 7

In this question you are asked to comment on a musical excerpt in terms of style, composition and performance.

Write a brief description of the excerpt, identifying its distinctive features and using appropriate concepts to describe what you hear.

You will hear the music **three** times with a pause of 15 seconds between each playing and a pause of **4 minutes** to re-write your answer on the next page.

A warning tone will sound 30 seconds before the start of the next question.

Here is the music for the first time.

Here is the music for the second time.

Here is the music for the third time.

*Your final answer should be a written description of what you have heard and not simply a list of concepts.*

CONCEPTS	UP TO	TOTAL MARK
Major Syllabic word setting } Modulation }	$\frac{1}{2}$ $\frac{1}{2}$	1
Allegro or equivalent Irregular metre or 5/4 or 5/8 Ostinato or Accents or Sforzando Syncopation	2 x $\frac{1}{2}$	1
Description of a range of dynamics Crescendo or diminuendo or equivalents	2 x $\frac{1}{2}$	1
Children or boys or treble choir/chorus Clarinet or Bassoon Piano Percussion or Snare drum or Bongo drums or Tambourine Tenor or Baritone (solo)	2 x $\frac{1}{2}$	1
Imitation or Antiphonal Mass Pedal 20th Century	2 x $\frac{1}{2}$	1

Total marks Question 7: (5)

## QUESTION 8

In this question you are asked to comment on a musical excerpt in terms of style, composition and performance.

Write a brief description of the excerpt, identifying its distinctive features and using appropriate concepts to describe what you hear.

You will hear the music **three** times with a pause of 15 seconds between each playing and a pause of **four minutes** to re-write your answer on the next page.

A warning tone will sound 30 seconds before the end of the question paper.

Here is the music for the first time.

Here is the music for the second time.

Here is the music for the third time.

*Your final answer should be a written description of what you have heard and not simply a list of concepts.*

CONCEPTS	UP TO	TOTAL MARK
Major	$\frac{1}{2}$	1
Syllabic word setting	$\frac{1}{2}$	
4 beats in the bar <i>or</i> Simple time <i>or</i> equivalent time signatures		
Moderato/Allegro <i>or</i> equivalent	2 x $\frac{1}{2}$	1
Syncopation		
Break/Improvisation		
Scat singing		
Strophic <i>or</i> equivalent	2 x $\frac{1}{2}$	1
Walking bass <i>or</i> Riff		
12-bar blues		
Bass guitar <i>or</i> (Double) bass		
Backing vocals		
Drumkit/Drums/Drum fills		
Harmonica		
(Muted) trumpet	4 x $\frac{1}{2}$	2
Saxophone		
Tenor <i>or</i> Male voice		
Trombone		

Total marks Question 8: (5)

[END OF MARKING INSTRUCTIONS]