

# X236/10/01

NATIONAL FRIDAY, 11 MAY  
QUALIFICATIONS 9.00 AM – 10.30 AM  
2012

MODERN STUDIES  
INTERMEDIATE 1

This Examination Paper consists of 3 Sections. Within each Section there is a choice of Study Themes. There is one question for each Study Theme.

**Section A – Political Issues in the United Kingdom (answer one question)**

Question 1	Study Theme 1A	Government and Decision Making in Scotland	Pages	2 – 5
Question 2	Study Theme 1B	Government and Decision Making in Central Government	Pages	6 – 9

**Section B – Social Issues in the United Kingdom (answer one question)**

Question 3	Study Theme 2A	Equality in Society: Wealth and Health in the United Kingdom	Pages	10 – 13
Question 4	Study Theme 2B	Crime and the Law in Society	Pages	14 – 16

**Section C – International Issues (answer one question)**

Question 5	Study Theme 3A	The Republic of South Africa	Pages	18 – 20
Question 6	Study Theme 3B	The People's Republic of China	Pages	22 – 24
Question 7	Study Theme 3C	The United States of America	Pages	26 – 28
Question 8	Study Theme 3D	The European Union	Pages	30 – 32
Question 9	Study Theme 3E	Development in Brazil	Pages	34 – 36

Total Marks – 60

- 1 Read the questions carefully.
- 2 You must answer **one** question from **each** of Section A, Section B and Section C.
- 3 You must answer all parts of the questions you choose.
- 4 You should spend approximately 30 minutes on each Section.
- 5 If you cannot do a question or part of a question, move on and try again later.
- 6 Write your answers in the book provided. Indicate clearly, in the left hand margin, the question and section of question being answered. Do not write in the right hand margin.



## SECTION A – POLITICAL ISSUES IN THE UNITED KINGDOM

Answer **ONE** question only:

Question 1 Study Theme 1A – Government and Decision Making in Scotland

on pages 2–5

**OR** Question 2 Study Theme 1B – Government and Decision Making in Central Government  
on pages 6–9

### *STUDY THEME 1A: GOVERNMENT AND DECISION MAKING IN SCOTLAND*

#### **Question 1**

(a) The Internet has become important as a way of getting information about politics in Scotland.

Describe **two** ways the Internet can be used to get information about politics in Scotland.

**(4 marks)**

(b) Some people think that local Councillors should be full-time and should be paid for their work as Councillors.

Give **one** reason why local councillors should be full-time.

**AND**

Give **one** reason why local councillors should be paid for their work as councillors.

**(4 marks)**

**Question 1 (continued)**

(c) Study Sources 1 and 2 below, then answer the question which follows.

**SOURCE 1**

<b>Result of Scottish Parliament Election: 2011</b>	
<b>Party</b>	<b>Number of MSPs</b>
Scottish National Party	69
Labour Party	37
Conservative Party	15
Liberal Democrats	5
Green Party	2
Others	1
<b>Total</b>	<b>129</b>

**SOURCE 2**

**Majority Government in Scotland**

Following the 2011 Election for the Scottish Parliament, the SNP formed a majority Government. This meant they formed a Government without any other parties. Alex Salmond was re-elected as First Minister. The SNP Government is now able to carry out most of its policies as it does not need the agreement of the other parties. Some people think a majority government is more powerful than a minority or coalition government.

The SNP had more than half the MSPs after the Scottish election in 2011 but they still found it difficult to get their policies through the Scottish Parliament.

View of Stewart Noble

Using Sources 1 and 2 above, give **one** piece of evidence to **support** the view of Stewart Noble and **one** piece of evidence to **oppose** the view of Stewart Noble.

Your answer must be based only on Sources 1 and 2 above.

**(4 marks)**

**[Turn over**

**Question 1 (continued)**

(d) Study the information below, then answer the question which follows.

**Turnout in Selected Constituencies: Scottish Parliament Election 2007**

	<b>Constituency</b>	<b>Winning Party</b>	<b>Turnout (%)</b>
Constituencies with the highest turnouts	Eastwood	Labour	63·4%
	Western Isles	SNP	61·8%
	Stirling	SNP	61·7%
	Strathkelvin and Bearsden	Labour	60·6%
	Edinburgh Pentlands	Conservative	59·4%
Scottish Average			51·7%
Constituencies with the lowest turnouts	Glasgow Pollock	Labour	41·2%
	Glasgow Baillieston	Labour	38·9%
	Glasgow Springburn	Labour	37·5%
	Glasgow Maryhill	Labour	36·0%
	Glasgow Shettleston	Labour	33·4%

Eastwood had the highest turnout in the 2007 Election. In all constituencies more than half of the electorate voted. The Labour Party won the constituency with the lowest turnout. The turnout in Stirling was below the Scottish average.

View of Maureen Beat

Give **two** examples of **exaggeration** from the statements by Maureen Beat.

For **each** example give **one** reason to explain why it is exaggerated.

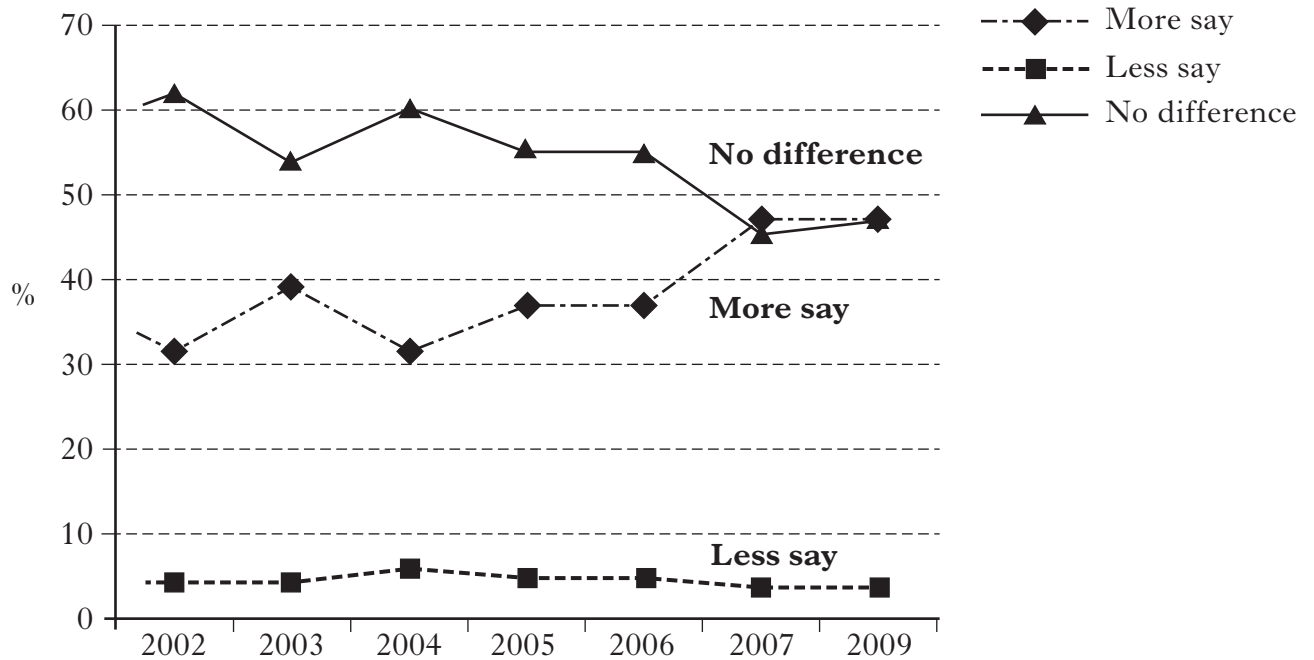
Your answer must be based only on the information above.

**(4 marks)**

**Question 1 (continued)**

(e) Study the information below, then answer the question which follows.

**How much say does having a Scottish Parliament give people in Scotland?**



Using the information above, what **conclusions** can you reach about the views of people on the Scottish Parliament between 2002 and 2009?

You should reach a conclusion about **each** of the following:

- the percentage of people who think having a Scottish Parliament gives them **more say**
- the percentage of people who think having a Scottish Parliament gives them **less say**.

Your answer must be based only on the information above.

**(4 marks)**

**NOW GO TO SECTION B ON PAGE 10**

*STUDY THEME 1B: GOVERNMENT AND DECISION MAKING IN  
CENTRAL GOVERNMENT*

**Question 2**

- (a) 

There are many ways people can take part in politics in the UK.
-----------------------------------------------------------------

Describe **two** ways people can take part in politics in the UK.

**(4 marks)**

- (b) 

Some people believe the House of Lords should be elected and have fewer members.
----------------------------------------------------------------------------------

Give **one** reason why some people believe the House of Lords should be elected.

**AND**

Give **one** reason why some people believe the House of Lords should have fewer members.

**(4 marks)**

## Question 2 (continued)

(c) Study Sources 1 and 2 below, then answer the question which follows.

### SOURCE 1

Result of UK Parliament Election: 2010	
Party	Number of MPs
Conservative Party	306
Labour Party	258
Liberal Democrats	57
Scottish National Party	6
Plaid Cymru	3
Green Party	1
Others	19
<b>Total</b>	<b>650</b>

### SOURCE 2

#### Coalition Government in UK

Following the 2010 General Election, the Conservative Party and the Liberal Democrats formed a coalition Government. This meant they had more MPs than all the other parties put together. The coalition Government was able to introduce many of the policies put forward by each of the coalition partners. The Conservatives could not do everything they wanted as there were some matters where the Liberal Democrats disagreed with them. Some people think a coalition Government is less effective than a majority government.

The Conservative Party had fewer than half the MPs after the General Election and the Conservatives were able to get all of their policies through Parliament.

View of Aileen Ritchie

Using Sources 1 and 2 above, give **one** piece of evidence to **support** the view of Aileen Ritchie and **one** piece of evidence to **oppose** the view of Aileen Ritchie.

Your answer must be based only on Sources 1 and 2 above.

**(4 marks)**

## Question 2 (continued)

(d) Study the information below, then answer the question which follows.

### Turnout in Selected Constituencies: General Election 2010

	Constituency	Winning Party	Turnout (%)
Constituencies with the highest turnouts	East Renfrewshire	Labour	77.3%
	Westmorland and Lonsdale	Lib Dem	76.9%
	Richmond Park	Conservative	76.2%
	Winchester	Conservative	75.8%
	Central Devon	Conservative	75.7%
UK Average			65.1%
Constituencies with the lowest turnouts	Blackley and Broughton	Labour	49.2%
	Glasgow North East	Labour	49.1%
	Birmingham, Ladywood	Labour	48.7%
	Leeds Central	Labour	46.0%
	Manchester Central	Labour	44.3%

East Renfrewshire had the highest turnout in the 2010 General Election. In all constituencies more than half of the electorate voted. The Labour Party won the constituency with the lowest turnout. The turnout in Central Devon was below the UK average.

View of Richard Sloan

Give **two** examples of **exaggeration** from the statements by Richard Sloan.

For **each** example give **one** reason to explain why it is exaggerated.

Your answer must be based only on the information above.

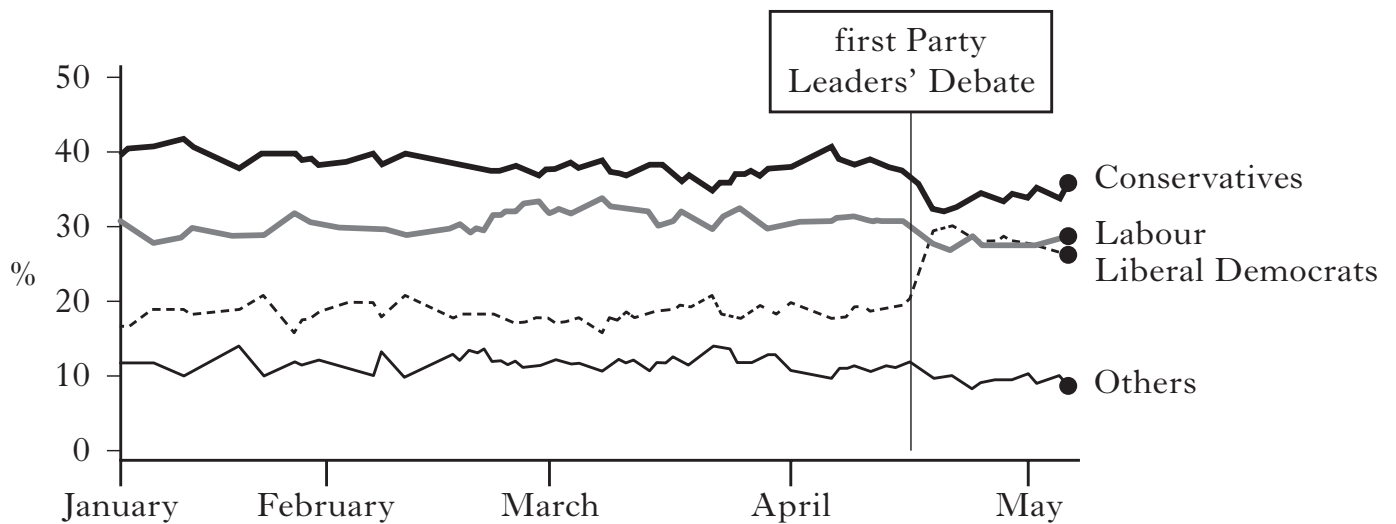
**(4 marks)**



**Question 2 (continued)**

(e) Study the information below, then answer the question which follows.

**Opinion Polls showing support for the three main parties before the General Election 2010**



Using the information above, what **conclusions** can you reach about the opinion polls between January and the General Election in May 2010?

You should reach a conclusion about **each** of the following:

- the political party which did best in the opinion polls
- the impact of the first Party Leaders' Debate on the opinion polls.

Your answer must be based only on the information above.

**(4 marks)**

**NOW GO TO SECTION B ON PAGE 10**

## SECTION B – SOCIAL ISSUES IN THE UNITED KINGDOM

Answer **ONE** question only:

Question 3 Study Theme 2A – Equality in Society: Wealth and Health in  
the United Kingdom on pages 10–13

**OR** Question 4 Study Theme 2B – Crime and the Law in Society on pages 14–16

### *STUDY THEME 2A: EQUALITY IN SOCIETY: WEALTH AND HEALTH IN THE UNITED KINGDOM*

#### **Question 3**

(a)  The NHS provides services which aim to improve people's health.

Describe **two** services provided by the NHS which aim to improve people's health.  
**(4 marks)**

(b)  Poverty continues to exist in the UK.

Give **two** reasons why poverty continues to exist in the UK.  
**(4 marks)**

**Question 3 (continued)**

(c) Study Sources 1 and 2 below, then answer the question which follows.

**SOURCE 1**

**Employment of Women, by ethnic group**

<b>Ethnic Group</b>	<b>Employed</b>	<b>Self-employed</b>	<b>Not working</b>
<b>Ethnic Minority Women</b>	52%	6%	41%
<b>White Women</b>	67%	7%	26%

**SOURCE 2**

**Education for Women**

There has been an increase in educational opportunities of all women in recent years. 8% of women in the UK today belong to an ethnic minority group. The gap in education between ethnic minority women and white women is decreasing. 21% of ethnic minority women have a degree compared with 19% of white women.

White women in the UK are less likely to have a degree but more likely to be self-employed in comparison to ethnic minority women.

View of Alice Morgan

Using Sources 1 and 2 above, give **two** pieces of evidence to **support** the view of Alice Morgan.

You must refer to the view of Alice Morgan in your answer.

Your answer must be based only on Sources 1 and 2 above.

**(4 marks)**

**[Turn over**

### Question 3 (continued)

(d) Study the information below, then answer the question which follows.

Moira Clark is a heavy smoker who would like to give up. You must decide whether Moira should attend a smoking support group to help her stop smoking or be given nicotine replacements.

#### Factfile on Moira Clark

- Moira says she can't trust herself to give up smoking and thinks having someone check up on her is a good idea.
- Moira has found it hard to get through the first day when she has tried to give up in the past.
- Moira thinks it would be helpful to have others in the same situation to talk to about the experience of giving up.
- Moira has tried to stop smoking several times before but was unsuccessful.
- Moira says the main reason she smokes is to try and deal with the stress of her busy job.
- Moira says the worst thing about trying to give up smoking is the cravings.

#### Option 1

**Moira should attend a smoking support group.**

- The smoking support group meets every week and its members talk about their problems and encourage one another to quit.
- A nurse gives members a breath test to check if they have been smoking.
- The group teaches members how to deal with stress and anxiety in different ways.

#### Option 2

**Moira should be given nicotine replacements.**

- Nicotine replacements help to reduce the cravings which many smokers feel when they try to stop.
- Studies show that nicotine replacements are especially effective in the first 24 hours.
- Patients who use nicotine replacements are four times more likely to successfully stop smoking.

Using the information above, **you must decide whether to recommend that Moira should attend a smoking support group (Option 1) or be given nicotine replacements (Option 2).**

Give **two** reasons to support your choice.

In your answer, **you must link the option you choose to the information in the Factfile on Moira Clark.**

Your answer must be based only on the information above.

**(4 marks)**

### Question 3 (continued)

(e) Study Sources 1 and 2 below, then answer the question which follows.

#### SOURCE 1

##### **Obesity in Children in Scotland**

Recent studies conducted by the NHS have shown that around 33% of Scottish children are overweight or obese.

All parents can give their children a good start by providing a healthy diet from an early age and should limit their children's sugar and salt intake.

Schools have had little success in trying to encourage healthy eating as many pupils still go out of school to buy junk food at lunchtime.

Many in the medical profession are worried about the level of obesity in Scotland.

#### SOURCE 2

##### **Childhood Obesity in Scotland**

Childhood obesity in Scotland continues to grow which is alarming for many people working in the medical professions.

One third of children in Scotland are thought to be obese or overweight.

Children are now less likely to be able to buy unhealthy food at lunchtime and education on healthy eating has been a huge success.

Many parents are unable to provide a suitable diet for their children as healthy food tends to be more expensive than processed foods.

Sources 1 and 2 give different views about childhood obesity in Scotland.

Study the two sources and write down what these **differences** are.

Mention **two** differences in your answer.

Your answer must be based entirely on Sources 1 and 2 above.

**(4 marks)**

**NOW GO TO SECTION C ON PAGE 18**

*STUDY THEME 2B: CRIME AND THE LAW IN SOCIETY*

**Question 4**

(a) Courts can use a variety of sentences for convicted adult offenders.

Describe **two** sentences which a court could give to a convicted adult offender.

**(4 marks)**

(b) Some young people in the UK commit crimes.

Give **two** reasons why some young people commit crimes.

**(4 marks)**

(c) Study Sources 1 and 2 below, then answer the question which follows.

**SOURCE 1**

**Percentage of crimes solved by the police**

	<b>Robbery</b>	<b>Crimes of dishonesty</b>	<b>Vandalism</b>
<b>2009</b>	39%	49%	21%
<b>2007</b>	46%	48%	21%

**SOURCE 2**

**Crime success**

In spite of what many people believe, the total number of recorded crimes in Scotland is in decline. Record numbers of policemen, greater enforcement and prevention activities mean more violent crimes are now being solved. 63% of violent crimes were solved in 2009 compared with 61% in 2007.

The police in Scotland have become more successful in solving violent crimes, but less successful at solving robberies.

View of Michael Baxter

Using Sources 1 and 2 above, give **two** pieces of evidence to **support** the view of Michael Baxter.

You must refer to the view of Michael Baxter in your answer.

Your answer must be based only on Sources 1 and 2 above.

**(4 marks)**

#### Question 4 (continued)

(d) Study the information below, then answer the question which follows.

You are a Reporter to a Children's Panel. You have to decide whether to recommend that Louise Drummond's case be sent to the Children's Panel or whether she should be given an official police warning.

#### Factfile on Louise Drummond

- Louise is 13 and has been taken home on three occasions by police because of under-age drinking and other anti-social behaviour.
- Louise's parents often go on holiday and leave her at home on her own.
- Louise has not attended school for months but is afraid of what will happen when she returns.
- Louise says that no one ever wants to listen to what she has to say.
- Louise says her parents will take any police action seriously.
- Louise has met the community police officer and thinks that he treats young people with a bit of respect.

#### Option 1

**Louise should be sent to a Children's Panel for a hearing.**

- Children's Panels deal with both offending behaviour and any concerns over a young person's welfare.
- Someone from school will attend the Panel to discuss plans to get Louise back to classes.
- Children's Panels allow young people to have their say in a relaxed environment.

#### Option 2

**Louise should be given an official police warning.**

- The police are keen to tackle anti-social behaviour and under age drinking with the individuals involved.
- An official warning is given by a Sergeant and the local community police officer.
- Parents of young people under the age of 16 must attend a formal meeting at the police station.

Using the information above, **you must decide whether Louise should be sent to a Children's Panel for a hearing (Option 1) or should be given an official police warning (Option 2).**

Give **two** reasons to support your choice.

In your answer, **you must link the option you choose to the information in the Factfile on Louise Drummond.**

Your answer must be based only on the information above.

**(4 marks)**

### Question 4 (continued)

(e) Study Sources 1 and 2 below, then answer the question which follows.

#### SOURCE 1

##### Drink Driving Problem

Drink driving is still a massive problem in Scotland and the number of offences has risen over recent years, especially during the festive period.

The police stop large numbers of drivers during the Christmas and New Year period to get the message out that if you are over the limit, you will be caught.

A change in the law means that if you are caught drink driving, you could lose your car.

Despite this many people are still taking risks and the message does not seem to be getting across.

#### SOURCE 2

##### Problem of Drink Driving

The police in Scotland have launched high profile campaigns during December and January to warn drivers that drink driving will not be tolerated.

Over recent years the number of people caught over the legal limit at Christmas and New Year has decreased.

People in Scotland are now getting the message that drink driving is dangerous and are less likely to take the chance.

New rules mean drivers caught drink driving for a second time can have their vehicle taken from them.

Sources 1 and 2 give different views about drink driving in Scotland.

Study the two sources and write down what these **differences** are.

Mention **two** differences in your answer.

Your answer must be based only on Sources 1 and 2 above.

**(4 marks)**

**NOW GO TO SECTION C ON PAGE 18**



**[Turn over for Question 5 on *Page eighteen***

## SECTION C – INTERNATIONAL ISSUES

Answer **ONE** question only:

- Question 5 Study Theme 3A – The Republic of South Africa on pages 18–20  
**OR** Question 6 Study Theme 3B – The People’s Republic of China on pages 22–24  
**OR** Question 7 Study Theme 3C – The United States of America on pages 26–28  
**OR** Question 8 Study Theme 3D – The European Union on pages 30–32  
**OR** Question 9 Study Theme 3E – Development in Brazil on pages 34–36

### *STUDY THEME 3A: THE REPUBLIC OF SOUTH AFRICA*

**In your answers you should give examples from South Africa**

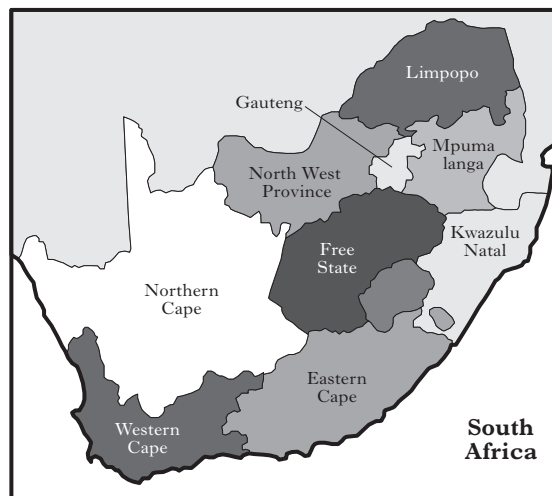
#### Question 5

- (a) Education has improved in South Africa in recent years.

Describe **two** ways in which education has improved in South Africa in recent years.

**(4 marks)**

(b)



There are many differences between the Provinces of South Africa.

Choose two Provinces of South Africa.

Describe **two** differences between the Provinces of South Africa you have chosen.

**(4 marks)**

- (c) Many people are opposed to the Government of South Africa.

Give **two** reasons why many people are opposed to the Government of South Africa.

**(4 marks)**

### Question 5 (continued)

(d) Study Sources 1 and 2 below, then answer the question which follows.

#### SOURCE 1

##### HIV/AIDS in South Africa

South Africa is the country with the largest number of people with HIV infections in the world. In 2010 over 49% of deaths were due to AIDS and this has resulted in a very high number of orphans.

There is some good news however; data collected at clinics has shown HIV infection levels in pregnant women have decreased from 30% in 2005 to 26% in 2009. The Government of South Africa has increased the resources to deal with HIV/AIDS and is now ranked second in the world in terms of spending on AIDS programmes.

#### SOURCE 2

##### Number of AIDS orphans in selected Provinces of South Africa

Year	Free State	Gauteng	KwaZulu Natal	Limpopo	North West
2008	93,029	282,151	467,328	109,481	106,634
2009	103,265	316,989	511,666	123,950	119,513

South Africa has a serious HIV/AIDS problem and this has resulted in a high number of orphans. Gauteng has the highest number of AIDS orphans in South Africa. There is evidence that since 2005, the number of pregnant women infected with HIV is increasing. In every Province between 2008 and 2009 the number of AIDS orphans has increased.

View of Sipo Rufaro

Write down **two** examples of **exaggeration** from the statement by Sipo Rufaro.

For **each** example, give **one** reason to explain why it is exaggerated.

Your answer must be based only on Sources 1 and 2 above.

**(4 marks)**

**[Turn over**

### Question 5 (continued)

(e) Study Sources 1 and 2 below, then answer the question which follows.

#### SOURCE 1

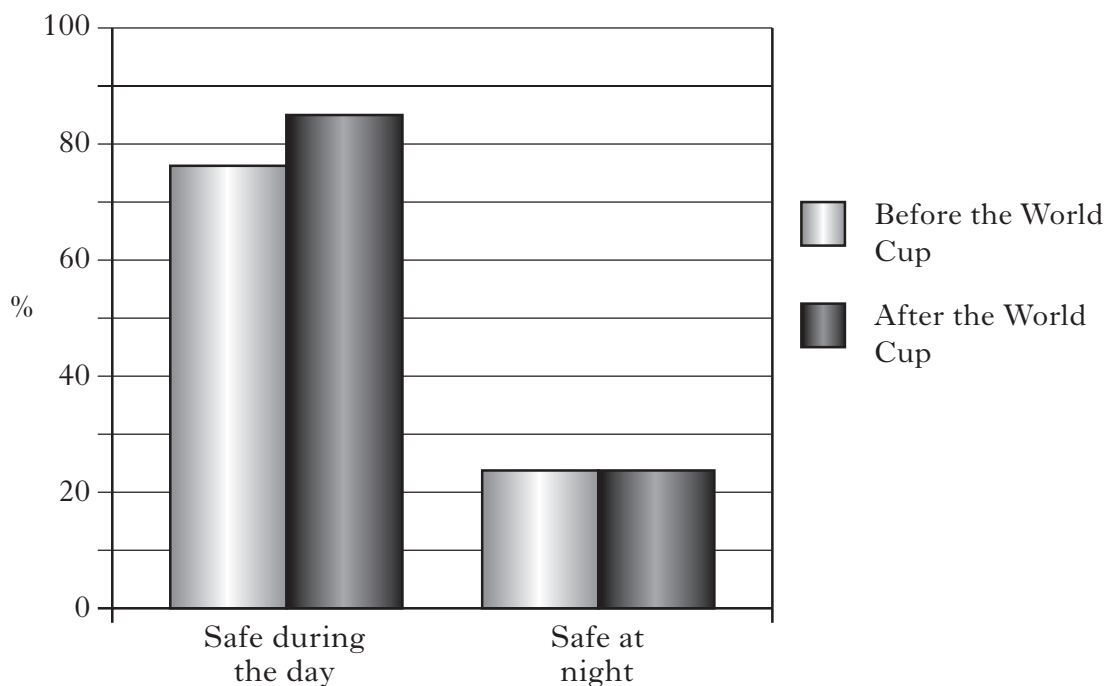
##### World Cup crime fears in South Africa

Hosting the football World Cup in 2010 has given a valuable boost to South Africa's reputation. In an opinion poll held before the tournament; when asked how safe a tourist destination they considered South Africa to be, the majority said "not safe". Only 3% of those asked said they felt "very safe" before the tournament.

When asked again, after the World Cup, the majority had changed their opinion to "quite safe". Once again only 3% said "very safe" after the tournament. Most people believe that hosting the World Cup in South Africa will attract more tourists in the future.

#### SOURCE 2

##### Percentage of people who feel safe during the day and at night



Sources 1 and 2 give information about people's fear of crime in South Africa before and after the World Cup.

Study the two sources and write down **differences** about people's fear of crime.

Mention **one** difference from **within** Source 1 and **one** difference from **within** Source 2 in your answer.

Your answer must be based only on Sources 1 and 2 above.

**(4 marks)**

**NOW CHECK THAT YOU HAVE ANSWERED ONE QUESTION FROM EACH OF SECTIONS A, B AND C**

**[Turn over for Question 6 on *Page twenty-two***

STUDY THEME 3B: THE PEOPLE'S REPUBLIC OF CHINA

In your answers you should give examples from China

Question 6

(a)



The Chinese Government has been criticised for limiting the use of the Internet in recent years.

Describe **two** ways in which the Chinese Government has limited the use of the Internet in recent years.

(4 marks)

(b) There are ways in which people can participate in politics in China.

Describe **two** ways in which people can participate in politics in China.

(4 marks)

(c) Some workers in China have been protesting against their employers in recent years.

Give **two** reasons why some workers in China have been protesting against their employers in recent years.

(4 marks)

**Question 6 (continued)**

(d) Study Sources 1 and 2 below, then answer the question which follows.

**SOURCE 1**

**The Chinese Economy**

China has made great progress in recent years. The economy of the People's Republic of China is now the world's second largest after the United States. This has happened because China changed from being a command economy to a market economy. China is a huge trading nation with massive levels of imports and exports. The average income of the Chinese people has improved a great deal over recent years.

**SOURCE 2**

**China and USA Compared**

<b>Economic Comparison</b>	<b>China</b>	<b>USA</b>
Average income per person (in US dollars)	\$4,000	\$46,000
Poverty rate	3%	13%
Exports (in US dollars)	\$1.2 trillion	\$1.1 trillion
Imports (in US dollars)	\$1.0 trillion	\$1.5 trillion

China has moved from a command economy to a market one. This has resulted in China becoming the world's biggest economy. The poverty rate is higher in China than in the USA. China now exports more than the USA.

View of Wang Lu

Give **two** examples of **exaggeration** from the view of Wang Lu.

For **each** example give **one** reason to explain why it is exaggerated.

Your answer must be based only on Sources 1 and 2 above.

**(4 marks)**

**[Turn over**

**Question 6 (continued)**

(e) Study Sources 1 and 2 below, then answer the question which follows.

**SOURCE 1**

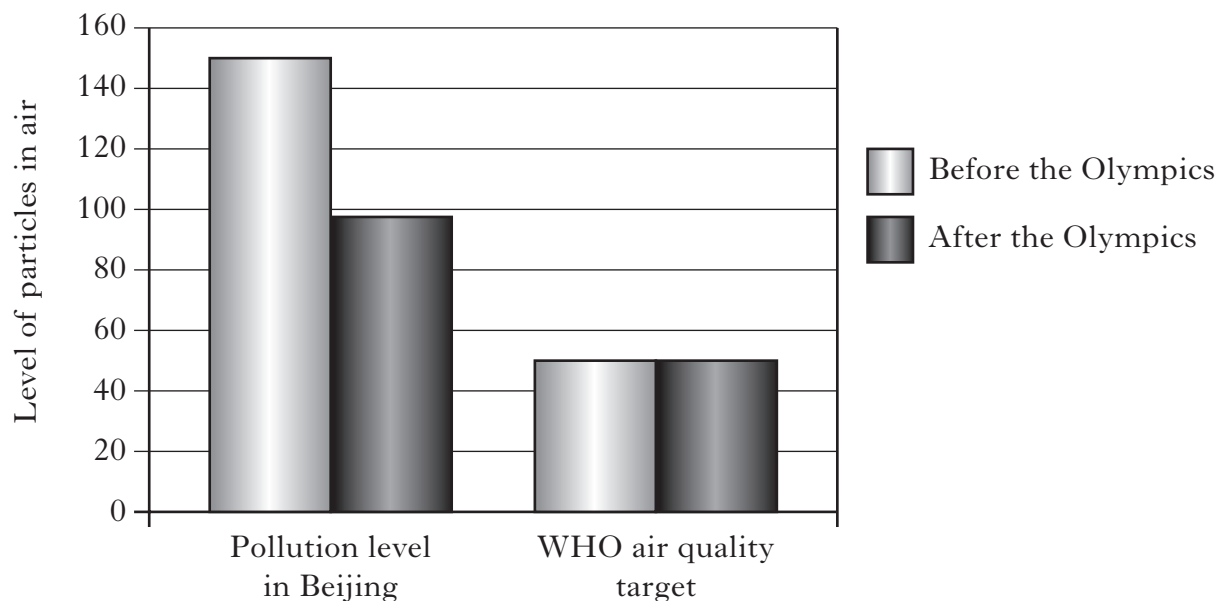
**Pollution Levels in China**

Before the start of the Olympic Games in August 2008, the Chinese Government made real efforts to tackle the high level of pollution. This encouraged many tourists to go to the games which were regarded by many people, both in China and around the world, as a success.

However, once the games were over, pollution got worse again as China continued to build up its economy. Hardly any action was taken against certain workplaces which clearly broke agreements on pollution controls. However, tourism has continued to grow in China.

**SOURCE 2**

**Pollution levels in Beijing and WHO targets on air quality before and after Olympic Games 2008**



Sources 1 and 2 give information about pollution in Beijing before and after the 2008 Olympic Games.

Study the two sources and write down **differences** before and after the Olympic Games.

Mention **one** difference from **within** Source 1 and **one** difference from **within** Source 2 in your answer.

Your answer must be based only on Sources 1 and 2 above.

**(4 marks)**

**NOW CHECK THAT YOU HAVE ANSWERED ONE QUESTION FROM EACH OF SECTIONS A, B AND C**



**[Turn over for Question 7 on *Page twenty-six***

*STUDY THEME 3C: THE UNITED STATES OF AMERICA*

**In your answers you should give examples from the USA**

**Question 7**

(a)



Illegal immigrants can face many problems in the USA.

Describe **two** problems illegal immigrants can face in the USA.

**(4 marks)**

(b) Health care in the USA is provided in different ways.

Describe **two** ways health care is provided in the USA.

**(4 marks)**

(c) Many Americans choose not to take part in politics.

Give **two** reasons why many Americans choose not to take part in politics.

**(4 marks)**

**Question 7 (continued)**

(d) Study Sources 1 and 2 below, then answer the question which follows.

**SOURCE 1**

**Gun Lobby Influences Congress**

The National Rifle Association (NRA) is one of the largest and most powerful groups campaigning in the USA to defend the right of Americans to own guns. During the 2008 Presidential campaign, the NRA spent \$10 million on Congressional or local elections. The gun lobby, led by the NRA has donated over \$21 million to candidates since 1990, 86% of it to the Republican Party. During the same period, gun control supporters have given less than \$2 million.

**SOURCE 2**

<b>Should States be able to pass laws banning handguns?</b>			
	<b>Should</b>	<b>Should Not</b>	<b>Don't know</b>
Total	45%	50%	5%
Men	38%	57%	5%
Women	51%	43%	6%

Most Americans think laws should be passed to ban handguns. Women are more likely than men to support banning handguns. Gun ownership groups spend more on elections than gun control groups. They give money to all parties equally.

View of Roy Byrd

Write down **two** examples of **exaggeration** from the statements by Roy Byrd.

For **each** example, give **one** reason to explain why it is exaggerated.

Your answer must be based only on Sources 1 and 2 above.

**(4 marks)**

**[Turn over**

**Question 7 (continued)**

(e) Study Sources 1 and 2 below, then answer the question which follows.

**SOURCE 1**

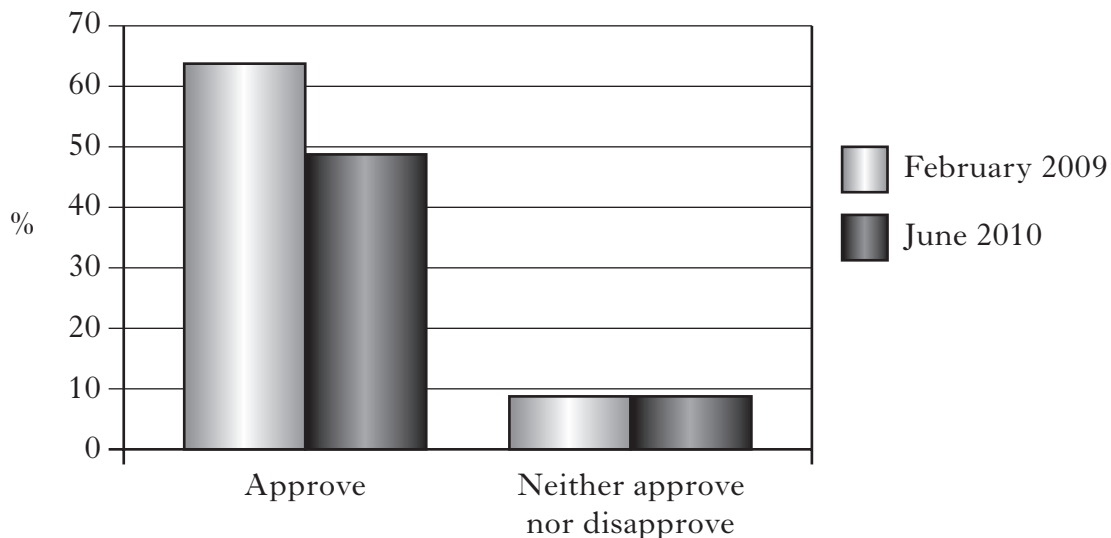
**Party support for President Obama between February 2009 and June 2010**

When he was sworn in as America's first African-American President in January 2009, President Obama had the overwhelming support of almost all Democrats. These Democrats have continued to support President Obama over the first two years of his presidency because of his foreign and domestic policies.

Since becoming President, many Republicans in the USA have changed their view about President Obama. There has been a sharp fall in Republican support for the President from 34% thinking he is doing a good job to only 16% in June 2010.

**SOURCE 2**

**Do you approve of the job done by President Obama?  
(February 2009 – June 2010)**



Sources 1 and 2 give information about the US public's views on President Obama.

Study the two sources and write down **differences** between February 2009 and June 2010.

Mention **one** difference from **within** Source 1 and **one** difference from **within** Source 2 in your answer.

Your answer must be based only on Sources 1 and 2 above.

**(4 marks)**

**NOW CHECK THAT YOU HAVE ANSWERED ONE QUESTION FROM EACH OF SECTIONS A, B AND C**

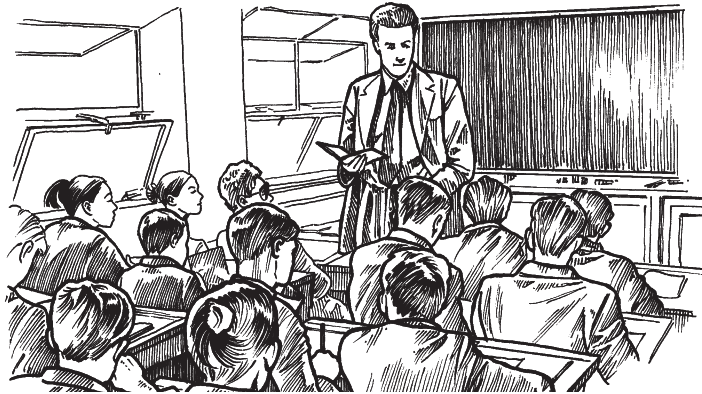
**[Turn over for Question 8 on *Page thirty***

*STUDY THEME 3D: THE EUROPEAN UNION*

**In your answers you should give examples from EU member states**

**Question 8**

(a)



There are differences in education between the UK and other European Union member states.

Describe **two** differences in education between the UK and **one** other European Union member state.

**(4 marks)**

(b)

Some people from a European Union country may go and live in another country in the European Union.

Describe **two** advantages of going to another European Union country to live.

**(4 marks)**

(c)

Some EU member states do not want any new countries to join the European Union.

Give **two** reasons why some EU member states do not want any new countries to join the European Union.

**(4 marks)**

**Question 8 (continued)**

(d) Study Sources 1 and 2 below, then answer the question which follows.

**SOURCE 1**

**Fishing Stocks in the European Union**

People living in the European Union are eating more fish than ever before, partly because the message is getting through that fish is good for our health. The result of this is that there are lower fish stocks and fish will need to be imported from outside the EU. EU Ministers promote the idea that eating fish is a good way of reducing heart disease. Nowadays people in all EU countries care more about their health.

**SOURCE 2**

**Percentage consumption of fish in EU by selected EU states**

	<b>Denmark</b>	<b>Netherlands</b>	<b>Spain</b>
<b>Cod</b>	6·1%	13·3%	8·5%
<b>Salmon</b>	10·8%	15·0%	9·3%
<b>Tuna</b>	18·6%	15·9%	24·3%
<b>Herring</b>	21·9%	12·8%	2·2%

Fish is an important food type which contributes towards a healthy balanced diet. There are still enough fish stocks within the European Union to satisfy demand. People in the Netherlands consume the largest amount of tuna. The lowest amount of herring is consumed in Spain.

View of Albert Beaumel

Give **two** examples of **exaggeration** from the view of Albert Beaumel.

For **each** example give **one** reason to explain why it is exaggerated.

Your answer must be based only on Sources 1 and 2 above.

**(4 marks)**

**[Turn over**

### Question 8 (continued)

(e) Study Sources 1 and 2 below, then answer the question which follows.

#### SOURCE 1

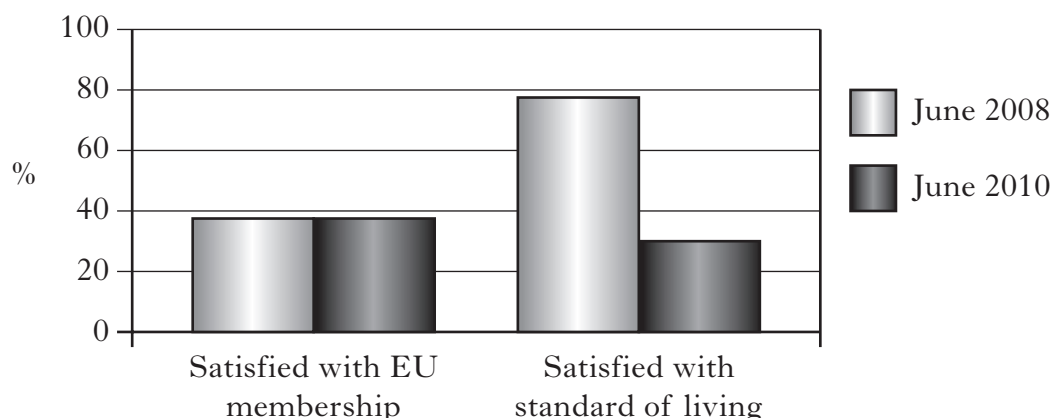
##### Impact of the economic crisis on the European Union

The economic crisis which began in 2008 had a big impact on the European Union. The standard of living of people in all countries was affected in some way. Before 2008, many people looked forward to retiring early.

By 2010 most countries and the living standards of the people were still affected by the crisis. Some countries, such as Greece and the UK have taken steps to increase the retirement age meaning that people will have to work longer than they planned.

#### SOURCE 2

##### Survey results on levels of satisfaction with EU membership and standard of living in the EU: June 2008 and June 2010



Sources 1 and 2 give information about the impact of the recession on EU states.

Study the two sources and write down **differences** between 2008 and 2010.

Mention **one** difference from **within** Source 1 and **one** difference from **within** Source 2 in your answer.

Your answer must be based only on Sources 1 and 2 above.

**(4 marks)**

**NOW CHECK THAT YOU HAVE ANSWERED ONE QUESTION FROM EACH OF SECTIONS A, B AND C**



**[Turn over for Question 9 on *Page thirty-four***

*STUDY THEME 3E: DEVELOPMENT IN BRAZIL*

**In your answers you should give examples from Brazil**

**Question 9**

(a) Education has improved in Brazil in recent years.

Describe **two** ways in which education has improved in Brazil in recent years.

**(4 marks)**

(b)



There are many differences between the regions of Brazil.

Choose two regions of Brazil.

Describe **two** differences between the regions of Brazil you have chosen.

**(4 marks)**

(c) Crime is a problem in some parts of Brazil.

Give **two** reasons why crime is a problem in some parts of Brazil.

**(4 marks)**

**Question 9 (continued)**

(d) Study Sources 1 and 2 below, then answer the question which follows.

**SOURCE 1**

**Rio de Janeiro to hold the 2016 Summer Olympics**

Rio de Janeiro was happy to be chosen by the International Olympic Committee to hold the 2016 Summer Olympic Games. This is a sign that Brazil has made social and economic progress in recent years and is now capable of holding a large international competition. Brazil is the world's second biggest food exporter and one of the world's largest oil producers. Hosting the games is good for the economy and good for the people, however there are big concerns in Rio de Janeiro about crime and security.

**SOURCE 2**

**Ballot results for the election to host the 2016 Summer Olympic Games**

Candidate City	Country	Round 1	Final Round
Rio de Janeiro	Brazil	27.7%	67.4%
Madrid	Spain	29.8%	32.6%
Tokyo	Japan	23.4%	Dropped out
Chicago	USA	19.2%	Dropped out

Citizens of Rio de Janeiro were delighted when their city was chosen to host the 2016 Summer Olympic Games. From the first round, Brazil was ahead in the voting. Brazil had a clear majority in the final round. The biggest problem for Rio de Janeiro will be building enough stadiums to hold the games.

View of Luis Santos

Write down **two** examples of **exaggeration** from the view of Luis Santos.

For **each** example, give **one** reason why it is exaggerated.

Your answer must be based only on Sources 1 and 2 above.

**(4 marks)**

**[Turn over for Question 9(e) on Page thirty-six**

### Question 9 (continued)

(e) Study Sources 1 and 2 below, and then answer the question which follows.

#### SOURCE 1

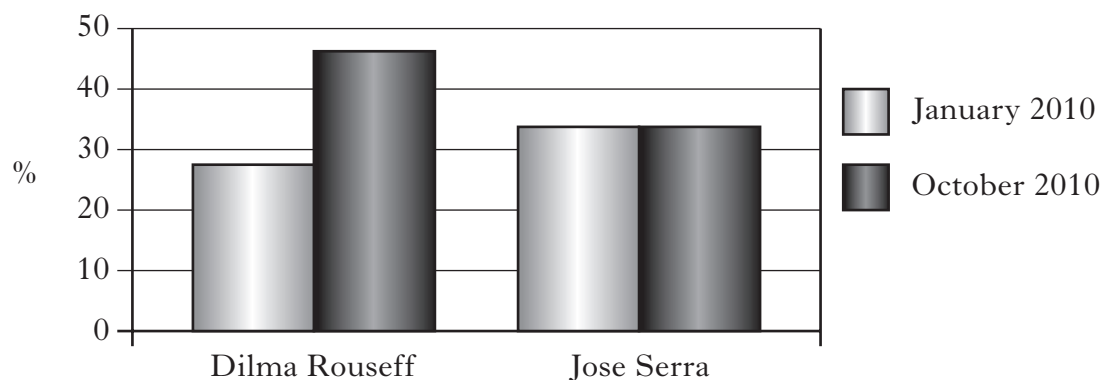
##### Main policies of the two leading Presidential election candidates: 2010

The two main candidates competing to become President of Brazil in 2010 were Dilma Rousseff and Jose Serra. Dilma Rousseff's main policies in the election were to provide more job opportunities, build more clinics and hospitals and provide more help for women.

In the closely fought campaign, Dilma's opponent, Jose Serra campaigned to create more jobs, improve health care and give more help to businesses.

#### SOURCE 2

##### Voting intentions for Presidential Election: January and October 2010



Sources 1 and 2 give information about the Presidential election in Brazil.

Study the two sources and write down **differences** about support for the main candidates and their policies.

Mention **one** difference from **within** Source 1 and **one** difference from **within** Source 2 in your answer.

Your answer must be based only on Sources 1 and 2 above.

**(4 marks)**

**NOW CHECK THAT YOU HAVE ANSWERED ONE QUESTION FROM EACH OF SECTIONS A, B AND C**

*[END OF QUESTION PAPER]*