

FOR OFFICIAL USE

--	--	--	--	--	--

**F**

	KU	HI
Total Marks		

**1660/27/01**

NATIONAL  
QUALIFICATIONS  
2013

TUESDAY, 7 MAY  
9.00 AM - 10.00 AM

HOME ECONOMICS  
STANDARD GRADE  
Foundation Level

**Fill in these boxes and read what is printed below.**

Full name of centre

Town

Forename(s)

Surname

Date of birth

Day    Month    Year

--	--	--	--	--	--

Scottish candidate number

--	--	--	--	--	--	--	--	--	--

Number of seat

- 1 Try to answer every question in this paper.
- 2 Read the questions carefully before you answer them.
- 3 Write your answers in the spaces provided.
- 4 If you need to do any rough work, use the spaces provided.
- 5 Before leaving the examination room you must give this book to the Invigilator. If you do not, you may lose all the marks for this paper.









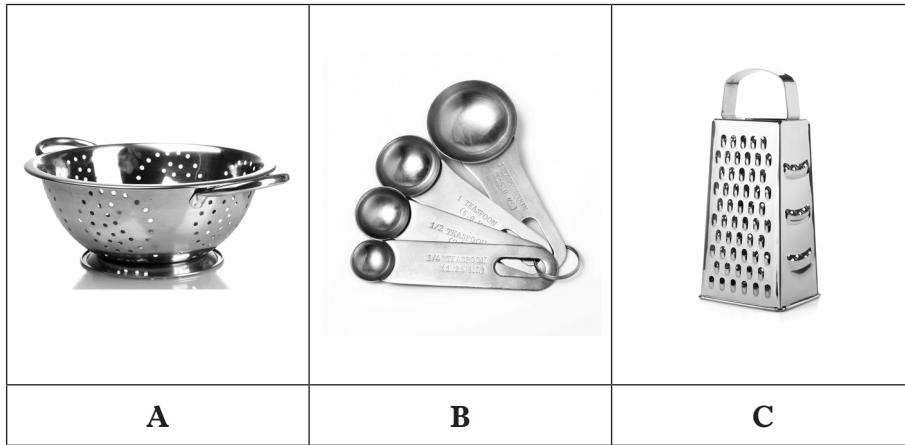
**[Turn over for Question 2 on *Page six***



Marks

2. (a) (continued)

(ii) Look at the equipment shown below.



Which piece of equipment should be used for the following tasks?

Draining macaroni \_\_\_\_\_

1

Measuring mustard \_\_\_\_\_

1

(b) (i) State **one** safety rule to follow when draining pasta.

\_\_\_\_\_

\_\_\_\_\_

1

(ii) State **one** reason why it is important to use a pot stand.

\_\_\_\_\_

\_\_\_\_\_

1

(iii) List **two** nutrients found in cheese.

1 \_\_\_\_\_

1

2 \_\_\_\_\_

1

[Turn over

Marks

3. (a) Look at the food order below and answer the questions that follow.

Home Economics Department Food Order			
Recipe: Fruit Sponge		Date required: 16th March 2013	
Dairy	Meat/Eggs	Stores	Extra equipment
100 g unsalted butter	2 medium eggs	100 g self raising flour	Electric whisk
150 ml whipping cream		100 g caster sugar	2 × 15 cm sponge tins
	Fruit/Vegetables	5 ml vanilla essence	Greaseproof paper
	50 g tinned mandarins		Nylon piping bag with nozzle

- |  |          |  |  |
|--|----------|--|--|
| (i) What is the item being made? _____             | <b>1</b> |  |  |
| (ii) How much caster sugar has been ordered? _____ | <b>1</b> |  |  |
| (iii) What size are the sponge tins? _____         | <b>1</b> |  |  |
| (iv) How much vanilla essence is required? _____   | <b>1</b> |  |  |
| (v) What type of cream is used? _____              | <b>1</b> |  |  |
| (vi) What is the piping bag made from? _____       | <b>1</b> |  |  |



Marks

**3. (continued)**

(b) Thinking about current dietary advice, look at the dietary diseases listed below.

Match the Scottish Dietary Target with the dietary disease that it helps to prevent. Use each dietary disease once.

One is done for you.

<b>Obesity</b>	<b>Constipation</b>	<b>Tooth decay</b>	<b>Coronary heart disease</b>	<b>High blood pressure</b>
A	B	C	D	E

<b>Scottish Dietary Targets</b>	
Eat less sugar	
Eat less fat	
Eat more oily fish	<i>D</i>
Eat less salt	
Eat more Total Complex Carbohydrates	

1  
1  
1  
1

KU	HI

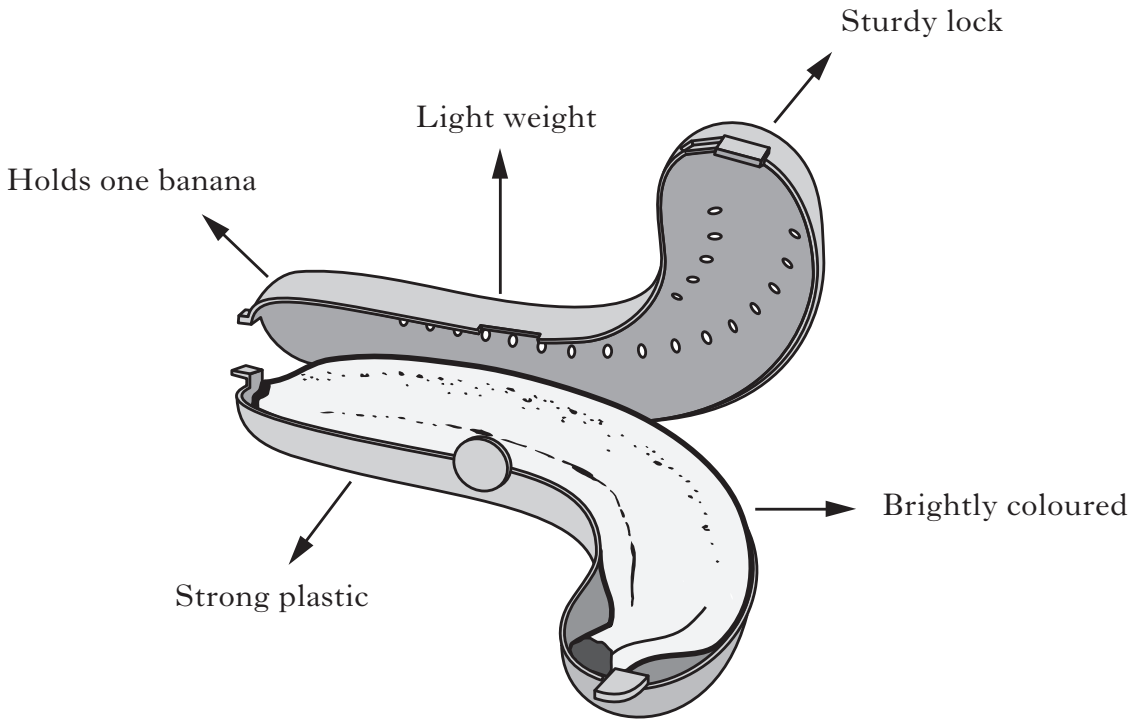
**[Turn over**

Marks

KU	HI

4. A youth worker is going on a sponsored walk and is taking a banana as a snack. He will put the banana in his backpack along with other essentials for the walk.

The youth worker is going to use a banana guard.



(a) Give **three** reasons why the banana guard is suitable for the youth worker and explain why **each** reason is important to him.

Reason 1 \_\_\_\_\_  
\_\_\_\_\_  
\_\_\_\_\_

2

Reason 2 \_\_\_\_\_  
\_\_\_\_\_  
\_\_\_\_\_

2

Reason 3 \_\_\_\_\_  
\_\_\_\_\_  
\_\_\_\_\_

2

**4. (continued)**

*Marks*

KU	HI
<b>1</b>	
<b>1</b>	

(b) State **two** benefits of walking.

Benefit 1 \_\_\_\_\_

\_\_\_\_\_

Benefit 2 \_\_\_\_\_

\_\_\_\_\_

\_\_\_\_\_

[Turn over

5. (a) A primary school needs a top as part of the school uniform.

The top needs to be

- Hard wearing
- Easy to care for
- Suitable for all pupils
- Low cost

Look at the information about tops below.

	<b>Information about tops</b>		
	<b>A</b>	<b>B</b>	<b>C</b>
Durable	***	*	***
Sizes available	ages 2–5	ages 7–10	ages 4–12
Machine wash	Yes	No	Yes
Colours available	3	2	6
Cost	2 for £18	£11	£8

Key: Durability

\*                      →                      \*\*\*  
Poor                      Good

Marks

KU	HI

5. (a) (continued)

(i) Choose the **most suitable** top for the school.

Top \_\_\_\_\_

1

(ii) Give **two** reasons for your choice and explain why **each** reason is important for the school and its pupils.

Reason 1 \_\_\_\_\_

\_\_\_\_\_

\_\_\_\_\_

\_\_\_\_\_

Reason 2 \_\_\_\_\_

\_\_\_\_\_

\_\_\_\_\_

\_\_\_\_\_

(iii) The school want a top for the nursery class.

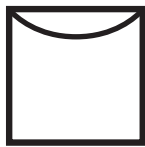
Choose the **most suitable** top for the nursery class.

Top \_\_\_\_\_

1

(b) The following care labels are found on clothing.

State what each symbol means.



Meaning: \_\_\_\_\_

\_\_\_\_\_

\_\_\_\_\_

1



Meaning: \_\_\_\_\_

\_\_\_\_\_

\_\_\_\_\_

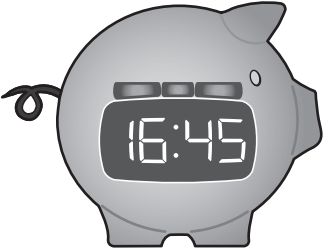
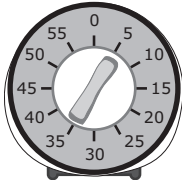
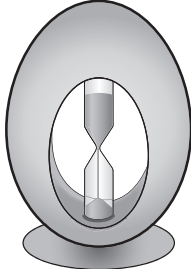
1

[Turn over

6. (a) An elderly single person wants to buy a kitchen timer.



Look at the information about kitchen timers below.

A		<ul style="list-style-type: none"> <li>• Large digital display</li> <li>• 90 minute timer</li> <li>• Available in lime, pink, yellow</li> <li>• Choice of cat, dog, pig shape</li> <li>• 3 year guarantee</li> </ul>
B		<ul style="list-style-type: none"> <li>• Minute markers</li> <li>• 60 minute timer</li> <li>• Available in stainless steel</li> <li>• Choice of round, square, triangle</li> <li>• 2 year guarantee</li> </ul>
C		<ul style="list-style-type: none"> <li>• Top section empties</li> <li>• 3 minute timer</li> <li>• Available in wood finish</li> <li>• Choice of egg or chicken shape</li> <li>• 1 year guarantee</li> </ul>

6. (a) (continued)

Marks

KU	HI

- (i) Choose the **most suitable** kitchen timer for the elderly single person.

Kitchen timer \_\_\_\_\_

1

- (ii) Give **two** reasons for your choice and explain why **each** reason is important for the elderly single person.

Reason 1 \_\_\_\_\_

\_\_\_\_\_

\_\_\_\_\_

\_\_\_\_\_

2

Reason 2 \_\_\_\_\_

\_\_\_\_\_

\_\_\_\_\_

\_\_\_\_\_

2

- (iii) Which kitchen timer would be **most suitable** for cooking boiled eggs?

Kitchen timer \_\_\_\_\_

1

- (b) Name **two** sources of income.

Source of income 1 \_\_\_\_\_

1

Source of income 2 \_\_\_\_\_

1

[END OF QUESTION PAPER]

**FOR OFFICIAL USE ONLY**

	KU		HI	
1		16		0
2		4		6
3		4		6
4		2		6
5		2		6
6		2		6
Total Marks		30		30