

STAPLE HERE

FOR OFFICIAL USE

--	--	--	--	--	--	--	--

X033/701

NATIONAL
QUALIFICATIONS
2007

MONDAY, 21 MAY
9.00 AM – 12.00 NOON

GRAPHIC
COMMUNICATION
ADVANCED HIGHER

Fill in these boxes and read what is printed below.

Full name of centre			Town			
<input type="text"/>			<input type="text"/>			
Forename(s)			Surname			
<input type="text"/>			<input type="text"/>			
Date of birth						
Day	Month	Year	Scottish candidate number			Number of seat
<input type="text"/>	<input type="text"/>	<input type="text"/>	<input type="text"/>	<input type="text"/>	<input type="text"/>	<input type="text"/>

80 marks are allocated to this paper.

- 1 Answer **all** questions.
- 2 Read each question carefully before you answer.
- 3 Written answers may be in **ink** or **pencil**.
- 4 Drawings and sketches **must be in pencil**.
- 5 Coloured pencils may be used when sketching.
- 6 Dimensions are given in millimetres or as stated.
- 7 Orthographic drawings are in third angle projection.
- 8 The leaflet for Question 1 has been supplied separately, please ensure that you have this leaflet.

9 At the end of the examination

check that your name is on every sheet;
put the sheets in correct numerical order;
place this sheet on top of the others;
join all sheets together by **stapling** at the top left-hand corner;
before leaving the examination room, you must give these sheets to the invigilator (if you do not you may lose all the marks for this paper).

Marks Grid

Question	Marks
1	
2	
3	
4	
5	
6	
7	
8	
Total Marks	



[BLANK PAGE]

1. Design Elements and Design Principles should be considered when producing a layout.

With reference to the leaflet for use with **Question 1**, select **two Design Principles** and **two Design Elements** from the list below and explain fully how each contribute to the layout.

Design Principles	Design Element
Contrast	Colour
White Space	Line
Proportion	Shape

Design Principle 1

(iv)

4

2. The following question refers to the commercial printing process.

(a) State **four** factors that would determine the choice of print method used for a publication.

(i)

(ii)

(iii)

(b) What is the term used to describe the process of ordering pages of a document in preparation for printing?

1

(c) Sketch a four page signature below.

Design Element 1

1
(6)

Design Element 2

(8)

3. A magazine is being prepared to promote each sport taking part in the 2008 Olympics in Beijing. The following specification has been drawn up.

- The orientation of the page will be portrait.
- The headline for each page must contain the name of the sport.
- A representation of graphic 1 and graphic 2 must be included.
- A space for text about the sport must be included.

3. **(continued)**
Thumbnail 1



Graphic 1



Graphic 2

- (a) Using the sport of fencing, sketch, in the space opposite, **two thumbnails** to satisfy the specification.

- One of the layouts must be symmetrical the other asymmetrical.
- Annotate either of your thumbnails to include information on:

- headline
- font type
- font size
- columns
- gutters
- colour
- graphic size and position.

Thumbnail 2

8

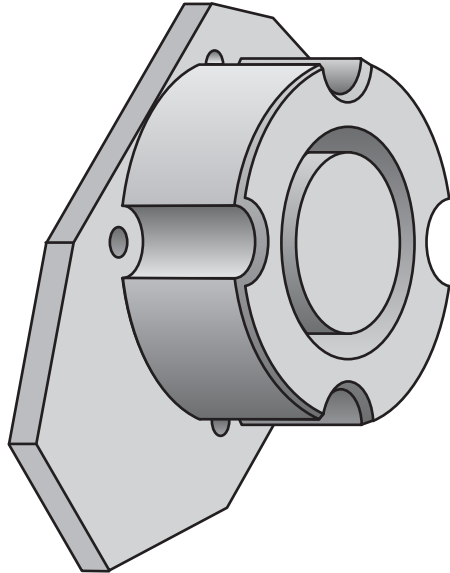
- (b) Explain the difference in purpose between thumbnails and visuals.

2

(10)

Marks

Marks



4. When handling graphics, Vector and Bitmap images are used.

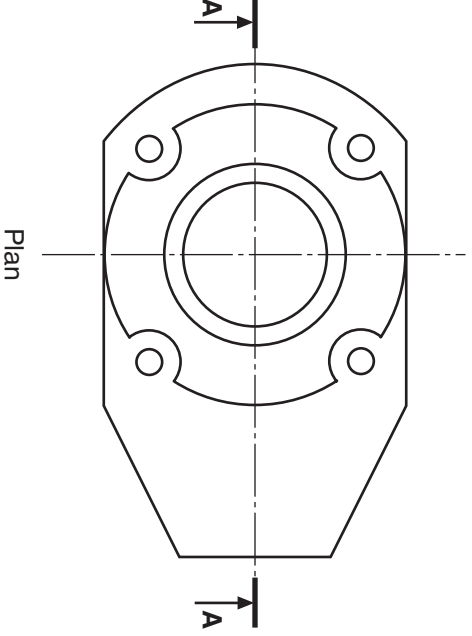
(a) Explain why Bitmap images tend to be much larger files than Vector images.

2

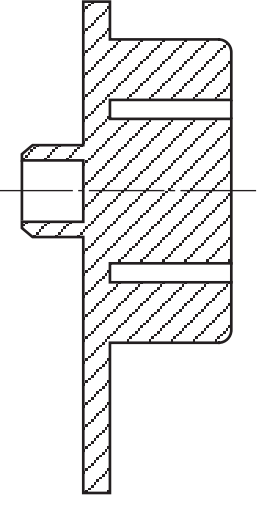
(b) Explain why Vector images do not lose definition when scaled.

2
(4)

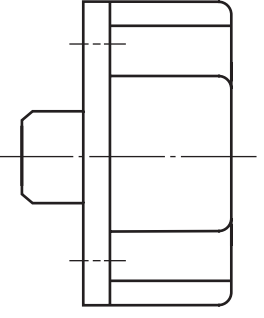
5. Orthographic views of a component are shown below.
With the aid of sketches, explain how a 3D CAD Solid Model of this component can be produced.



Please Note:
Hidden detail
has been
omitted.



Section A-A



End Elevation

(6)

5. (continued)

SUPPLEMENTARY PAGE

Use this page if extra space is required for answer to Question 5.

The given views of a bungalow are shown below. The bungalow has arched patio doors to the front and a door to the side.

Draw a measured two point perspective view of the bungalow from the given plan.

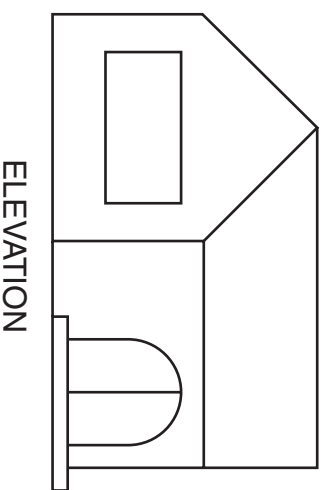
The spectator point (SP), plane of projection (PP), ground line (GL) and eye level (EL) are given.

(16 marks)

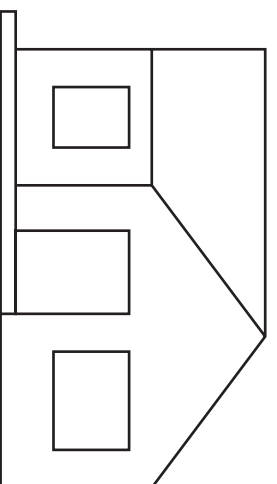
EL _____

GL _____

PP _____

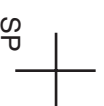
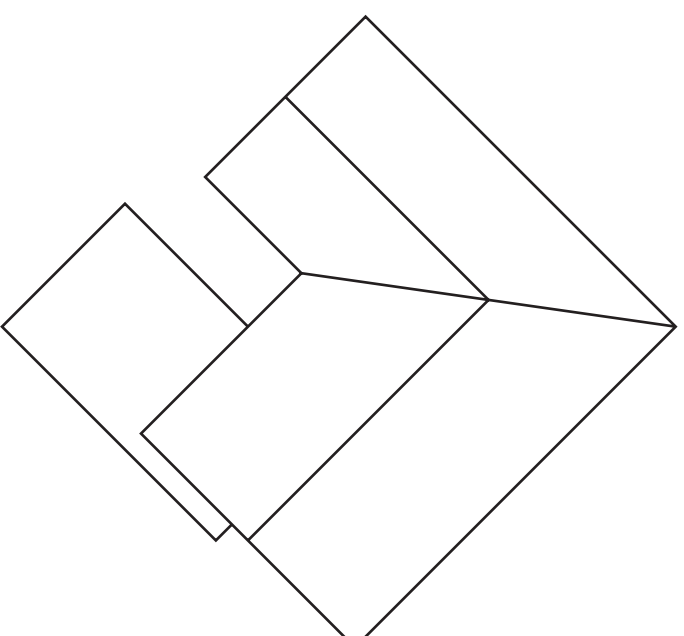
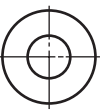


ELEVATION



END ELEVATION

[X033/701]



<i>a</i>	
<i>b</i>	
<i>c</i>	
<i>d</i>	
<i>e</i>	
<i>f</i>	
<i>g</i>	
<i>h</i>	
<i>i</i>	
<i>j</i>	
<i>k</i>	
<i>l</i>	
<i>m</i>	
<i>n</i>	

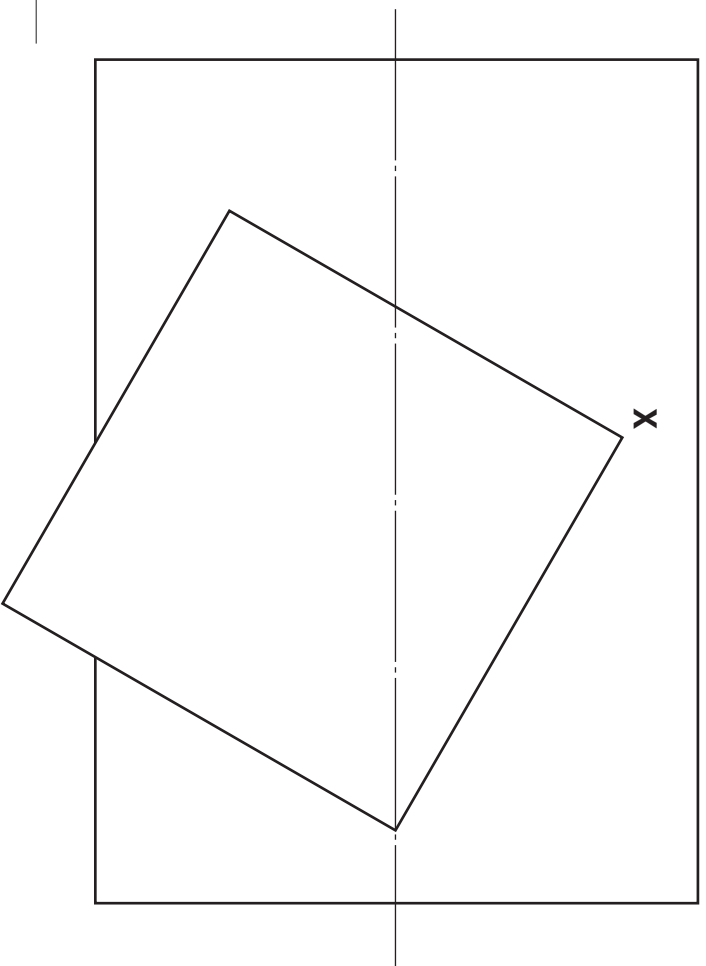
Candidate's Name _____

The plan and end elevation of interpenetrating cylindrical and square pipes are given.

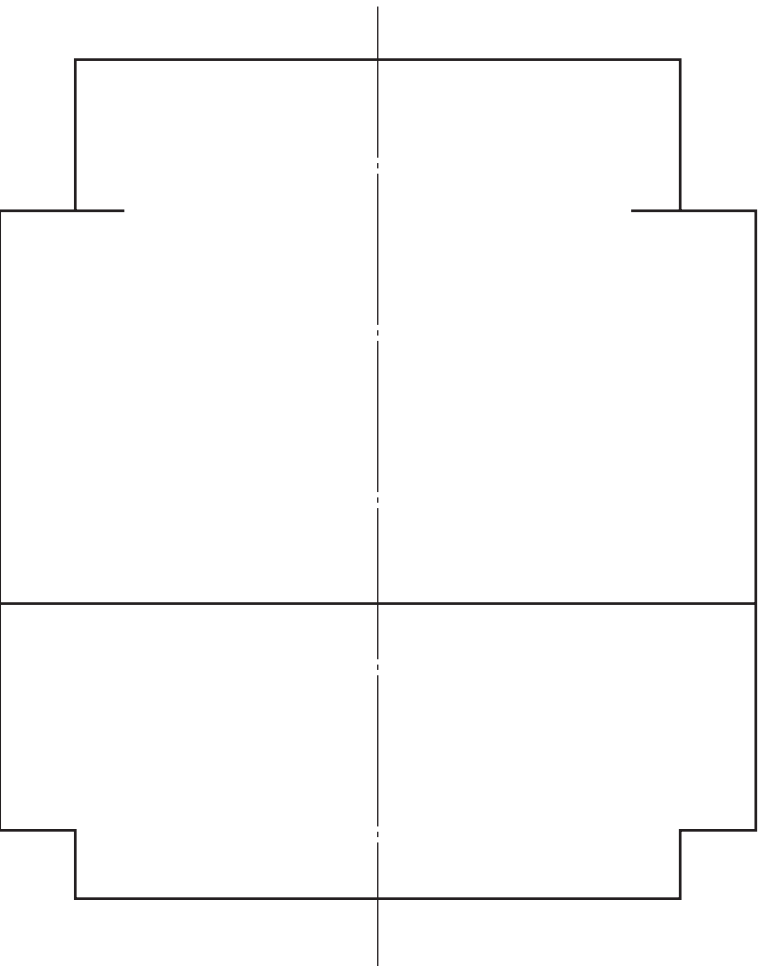
Draw, in the position shown:

- (a) the complete elevation;
- (b) the complete surface development of the square pipe starting at corner **X**.

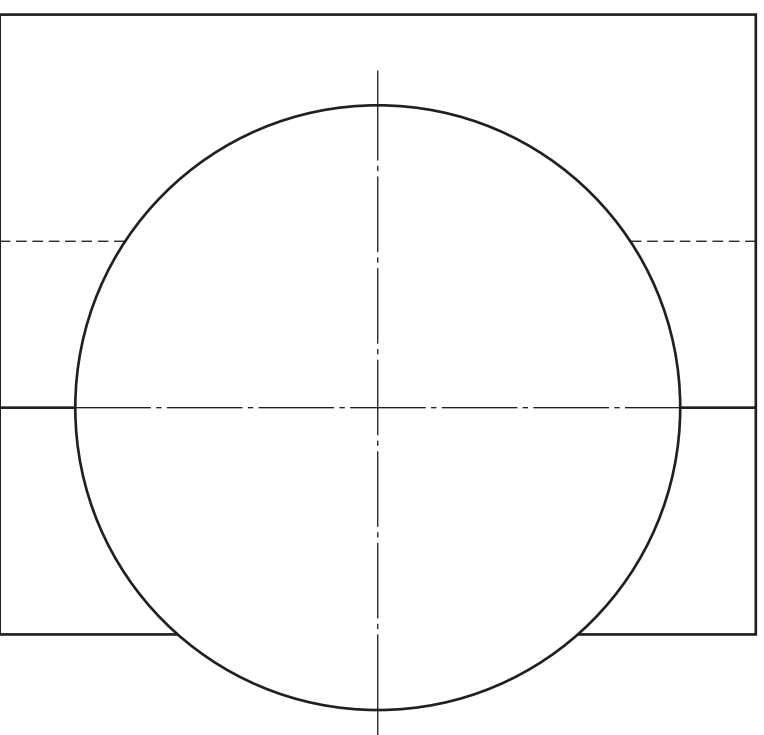
Include Hidden Detail in (a). (16 marks)



PLAN



ELEVATION

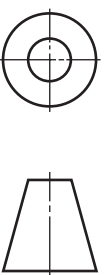


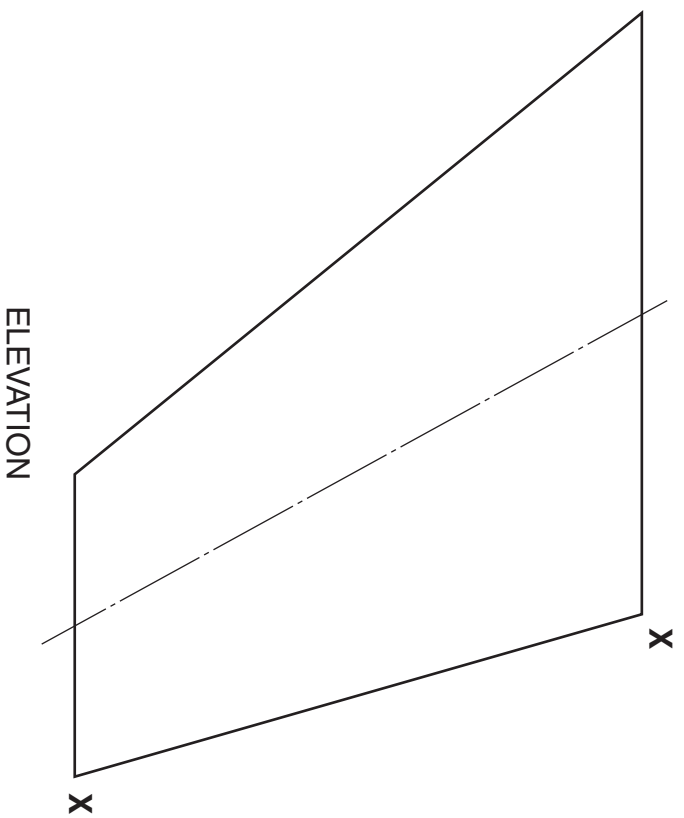
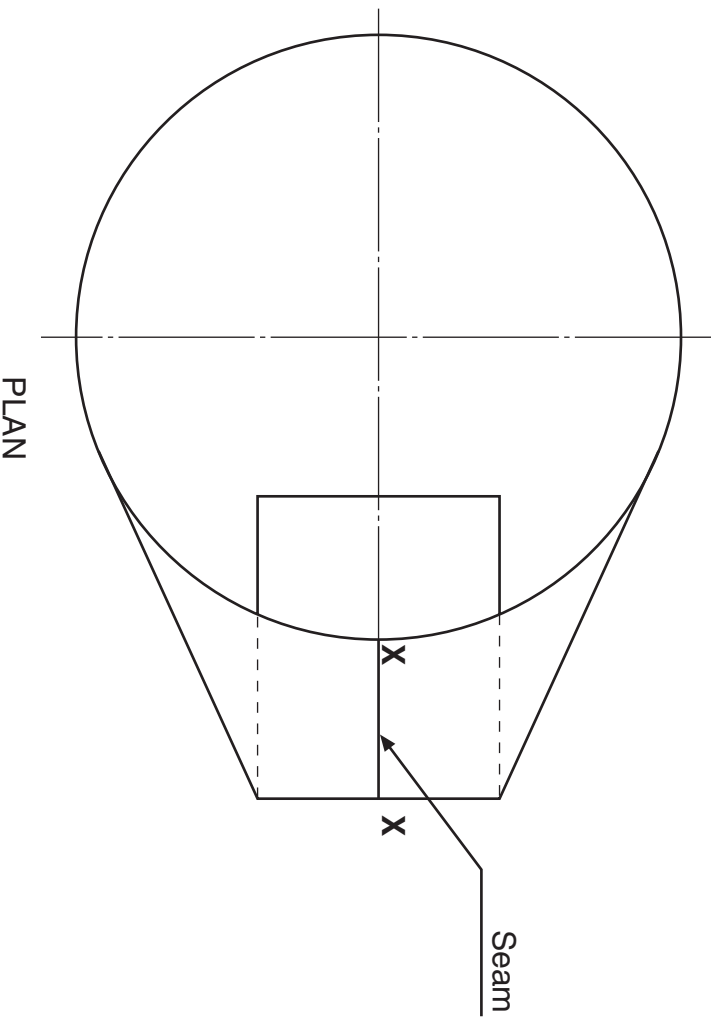
END ELEVATION



DEVELOPMENT

a	
b	
c	
d	
e	
f	
g	
h	
i	
j	
k	
l	
m	
n	



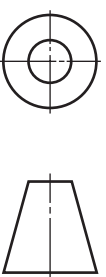


The plan and elevation of a transition piece are given.
Draw, in the position indicated, the Surface Development cut along seam **XX**.

(14 marks)

_____ **X**
 SURFACE DEVELOPMENT **X**

<i>a</i>	
<i>b</i>	
<i>c</i>	
<i>d</i>	
<i>e</i>	
<i>f</i>	
<i>g</i>	
<i>h</i>	
<i>i</i>	
<i>j</i>	
<i>k</i>	
<i>l</i>	
<i>m</i>	
<i>n</i>	



[BLANK PAGE]

ACKNOWLEDGEMENTS

Leaflet for use with Question 1 – Article, “*No-fuss feast*,” is taken from Pages 30–31 of ASDA Magazine, November 2005. Reproduced by kind permission of ASDA Magazine.

Question 3 – Beijing 2008 Olympic Games logo. Permission sought from Beijing Organising Committee for the Games of the XXIX Olympiad.

X033/702

NATIONAL
QUALIFICATIONS
2007

MONDAY, 21 MAY
9.00 AM – 12.00 NOON

GRAPHIC
COMMUNICATION
ADVANCED HIGHER

Leaflet for use with
Question 1



No-fuss feast

With Asda's tasty party food, you can have a whole Christmas spread ready and waiting in your freezer

What better way to celebrate with friends and family than by having a Christmas party? But while it's fun to plan a big bash, it's quite another thing preparing all that fiddly food, especially when you're busy buying presents.

That's why Asda has made it easy for you. Just pop to your local store and pick up a selection of mouthwatering frozen party goodies – choose from melt-in-the-mouth sausage rolls and succulent king prawns to spicy mini roasts and crisp spring rolls. You'll find you can put on a spread fit for a king, for less than £1 a head – and with next-to-no effort. When you're ready, just pop the food on to baking trays to heat in the oven, or simply leave to thaw on serving platters.



Chinese please!

Spring rolls are always popular – serve with a plum, sweet chilli or hoisin sauce.

- 10 Asda Duck Spring Rolls, £1.72 (200g; 86p/100g; freezer), or 3 packs for £5;
- 15 Asda Mint Spring Rolls, £1.72 (300g; 57.3p/100g; freezer), or 3 packs for £5



PREPARE TO PARTY

Spicy delights

Spice fans will love these potato and onion roasts, which come with a tangy tomato and coriander salsa dip. Or try the Indian Selection Pack of onion bhajis, vegetable samosas and vegetable pakoras – serve with mango chutney or raita.

- Asda Mini Rostis, 93p (240g; 38.8p/100g; freezer), or 3 packs for £2.50; Asda Indian Selection Pack, £1.72 (360g; 47.8p/100g; freezer), or 3 packs for £5; Asda Mango Chutney, 79p (240g; 32.9p/100g; grocery); Asda Raita, 98p (275g; 35.6p/100g; grocery)



So succulent

Finger food doesn't get better than these king prawns, which come coated in a light, crispy batter. And guests won't be able to resist skewered strips of tender, marinated chicken.

- Asda Crispy King Prawns, £1.72 (160g; £1.08/100g; freezer), or 3 packs for £5;
- Asda Marinated Chicken Skewers, £1.72 (200g; 86p/100g; freezer), or 3 packs for £5



Moreish bites

With their flaky pastry cases and creamy fillings, vol-au-vents are a party favourite. Asda's selection pack gives you two scrumptious flavours to choose from – Cheddar Cheese and Smoked Ham or Creamy Chicken and Red Chilli.

- Asda Vol-au-Vent Selection Pack, £1.72 (232g; 74.1p/100g; freezer), or 3 packs for £5



Party menu

Our suggested shopping list for a party of 20 people

- For nine pieces of food per guest, buy one pack each of:
 - Mini Rostis with Salsa Dip
 - Duck Spring Rolls
 - Mini Spring Rolls
 - Crispy King Prawns
 - Lattice Topped Savoury Bites
 - Marinated Chicken Skewers
 - Vol-au-Vent Selection Pack
 - Indian Selection Pack
 - Sausage Rolls
 - Mini Pavlovas
 - Mini Chocolate Edairs
 - Mini Cheesecakes

For 21 pieces of food per guest, add one pack each of:

- Chicken Dippers in Southern Style Coating
- Pork Cocktail Sausages
- Southern Fried Style Potato Wedges
- Breaded Garlic Mushrooms
- Hot and Spicy Onion Rings
- Profiteroles

For 24 pieces of food per guest, add one pack each of:

- Chicken Satay with Peanut Dip
- Mini Pizzas
- Filo Prawns
- Cheese and Tomato Bruschettas
- Black Forest Rolls
- Asda Mini Spring Rolls