

STAPLE HERE

FOR OFFICIAL USE

--	--	--	--	--	--

X033/201

NATIONAL
QUALIFICATIONS
2007

MONDAY, 21 MAY
1.00 PM – 3.30 PM

GRAPHIC
COMMUNICATION
INTERMEDIATE 2

Fill in these boxes and read what is printed below.

Full name of centre

Town

Forename(s)

Surname

Date of birth

Scottish candidate number

Number of seat

Day Month Year

70 marks are allocated to this paper

1 Answer all questions.

2 Read each question carefully before you answer.

3 Written answers may be in ink or pencil.

4 Drawings and sketches must be in pencil.

5 Dimensions are given in millimetres or as stated.

6 Orthographic drawings are in third angle projection.

At the end of the examination

check that your name is on every sheet;

put the sheets in correct numerical order;

place this sheet on top of the others;

join all sheets together by stapling at the top left-hand corner;

before leaving the examination room, you must give these sheets to the invigilator

(if you do not you may lose all the marks for this paper).

Question	Marks
1	
2	
3	
4	
5	
6	
7	
8	
Total Marks	

L1 X033/201 6/3870

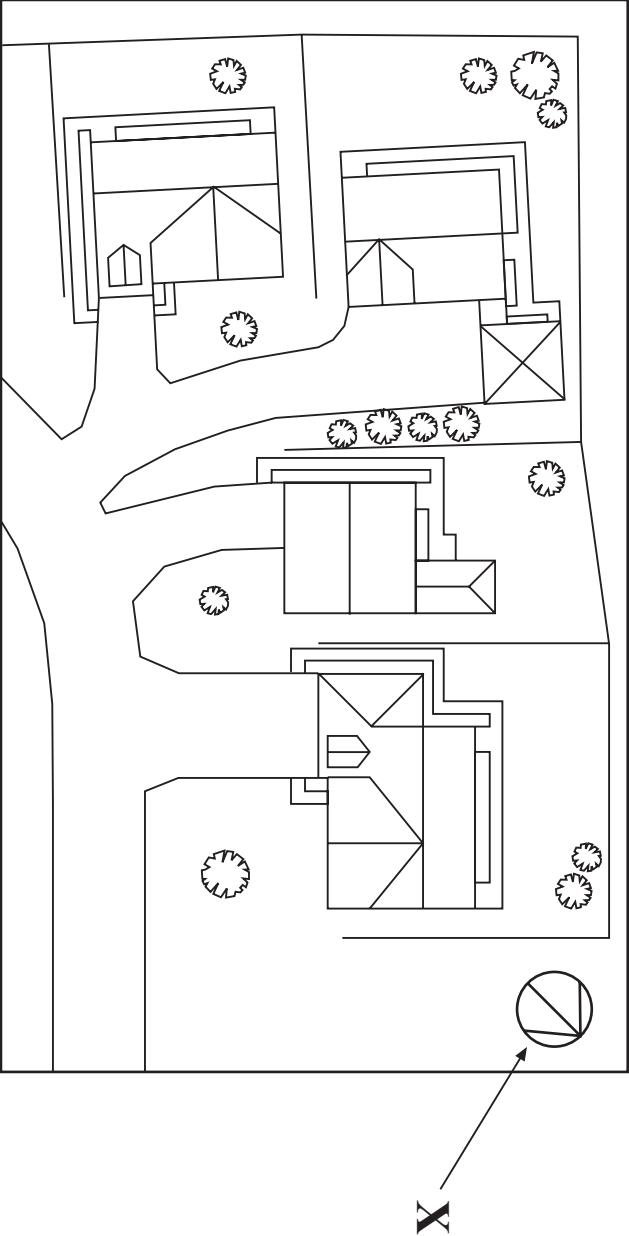
SCOTTISH
QUALIFICATIONS
AUTHORITY

©

[BLANK PAGE]

1

A new housing development is planned. One of the architect's plans is shown below.



(a) State the name given to this type of plan.

.....

(b) State **one** use for this type of plan.

.....

(c) State the appropriate scale for this type of plan.

.....

(d) State the purpose of symbol **X**.

.....

(4 marks)

2

An architects firm has two offices, one in Glasgow and the other in London. Drawings are frequently passed between them. British Standards have been applied to all drawings.

(a) State **two** reasons why it is important to apply common standards.

(i)

(ii)

(b) Name a portable storage **device** that would allow the architect to take CAD files home.

.....

(c) CAD software is used by the firm. Give **three** advantages that this has over manual drawing methods.

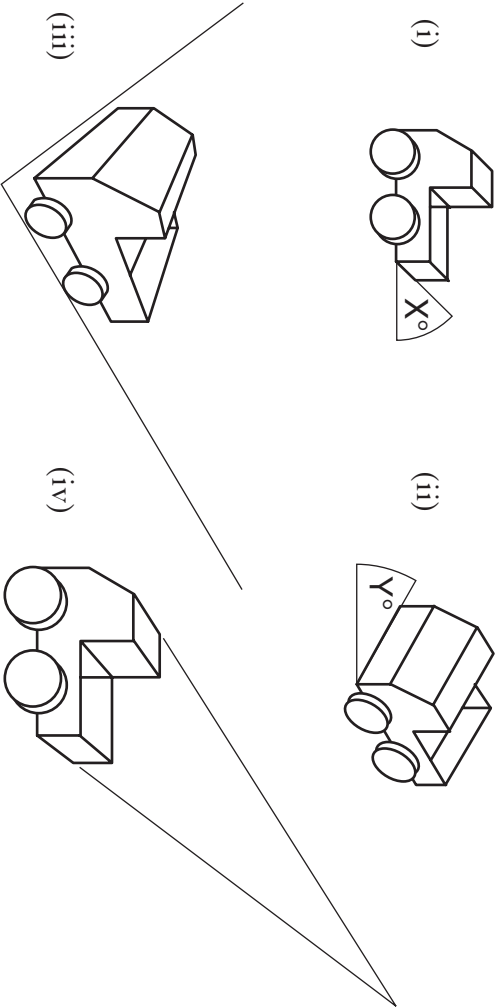
(i)

(ii)

(iii)

(6 marks)

(a) Name the drawing type used in each of the views, shown below.



(i)

(ii)

(iii)

(iv)

(b) State the value of angle X in view (i).

.....

(c) State the value of angle Y in view (ii).

.....

An enterprise class produced a promotional flyer for their Christmas Fair, using a CAG package.



(a) State which two commands would be used to duplicate the decoration graphic from one part of the document to another.

(i) and (ii)

(b) State the type of fill used for the background.

.....

(c) State the command which allows all of the graphic items to be moved as one object.

.....

(6 marks)

(d) Name the **type** of CAG package that would be used to produce a newsletter containing text and graphics.

.....

(e) State **one** reason for saving your work at regular intervals.

.....

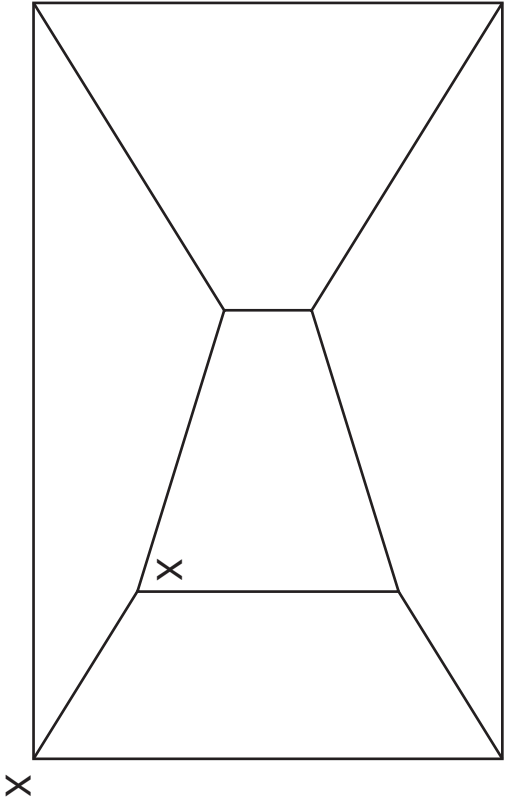
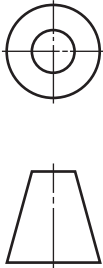
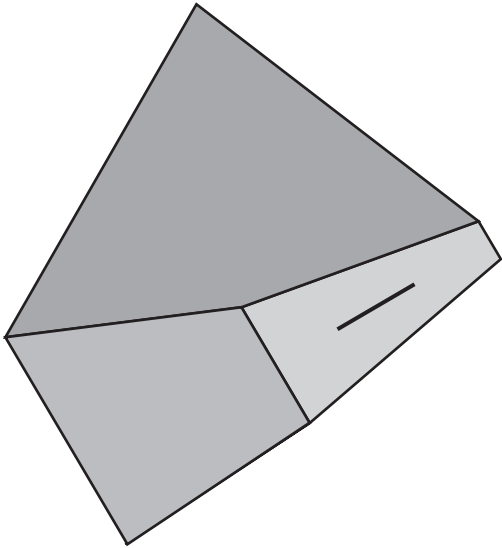
(6 marks)

The complete plan and elevation of a small bank based on a rectangular pyramid are given below. An illustration is shown.

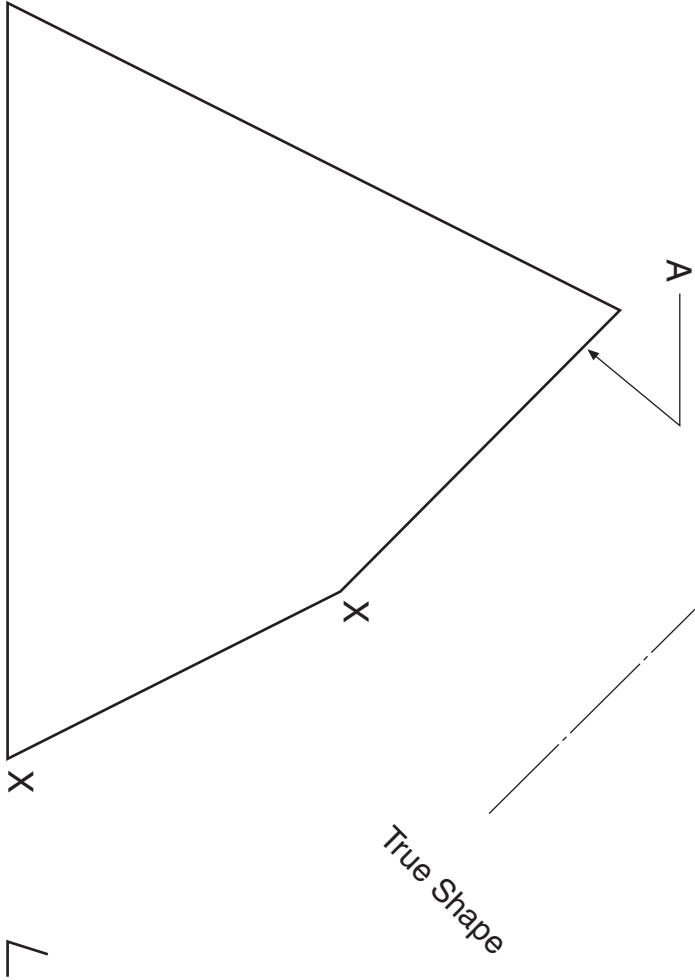
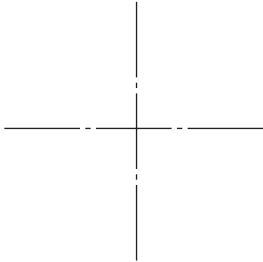
Draw, in the positions given:

- (a) the end elevation;
- (b) the true shape of surface A;
- (c) the development of the sloping sides of the bank, opened along edge X-X.

Do not show hidden detail.
Do not draw the slot shown in the illustration.
(10 marks)



Plan



Elevation

True Shape

End Elevation

Development

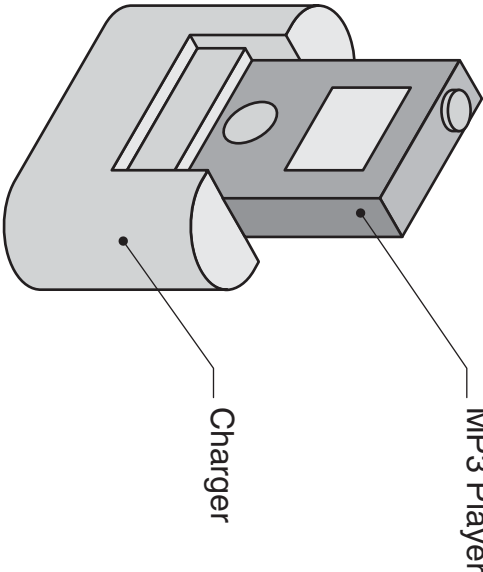
<i>a</i>	
<i>b</i>	
<i>c</i>	
<i>d</i>	
<i>e</i>	
<i>f</i>	
<i>g</i>	
<i>h</i>	
<i>i</i>	
<i>j</i>	
<i>k</i>	
<i>l</i>	
<i>m</i>	
<i>n</i>	

The elevation, end elevation and plan of an MP3 player and charger are given. An illustration is shown.

- Draw**, in the positions indicated:
- (a) the **assembled** elevation;
 - (b) the **assembled** plan;
 - (c) the **assembled** end elevation.

Show all hidden detail.

(12 marks)



Plan

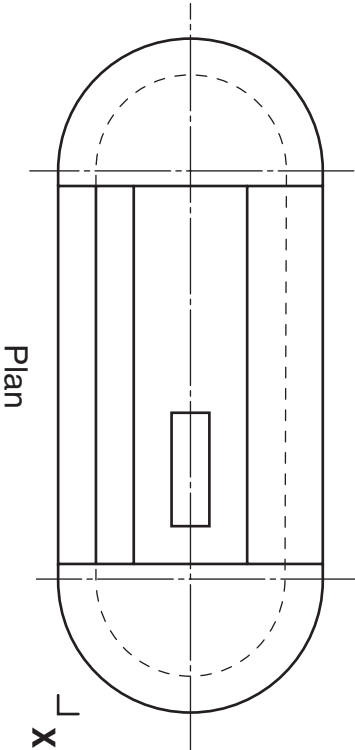
Plan

Elevation

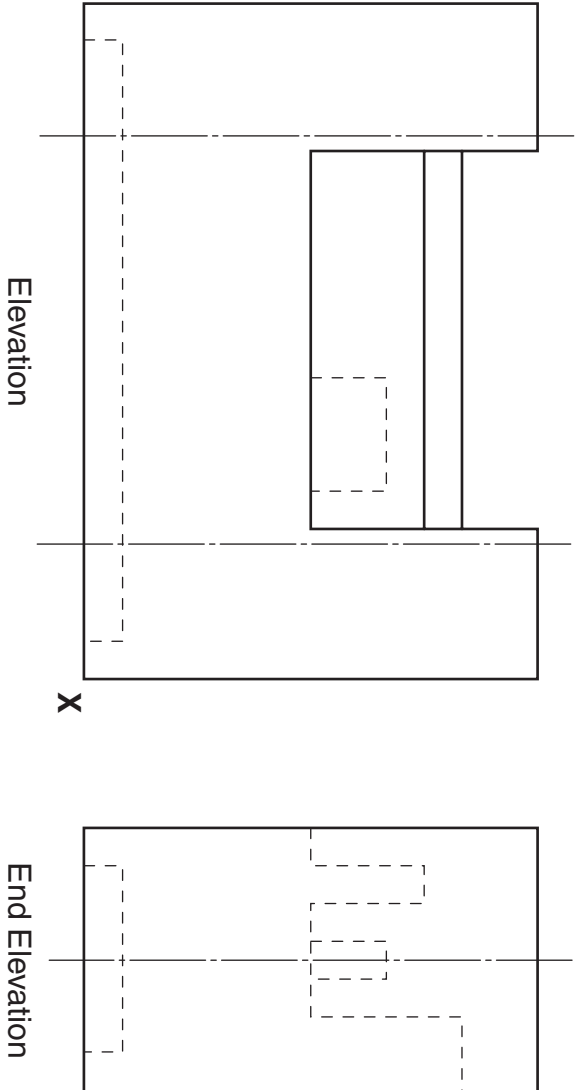
End Elevation

<i>a</i>	
<i>b</i>	
<i>c</i>	
<i>d</i>	
<i>e</i>	
<i>f</i>	
<i>g</i>	
<i>h</i>	
<i>i</i>	
<i>j</i>	
<i>k</i>	
<i>l</i>	
<i>m</i>	
<i>n</i>	

Plan



Elevation



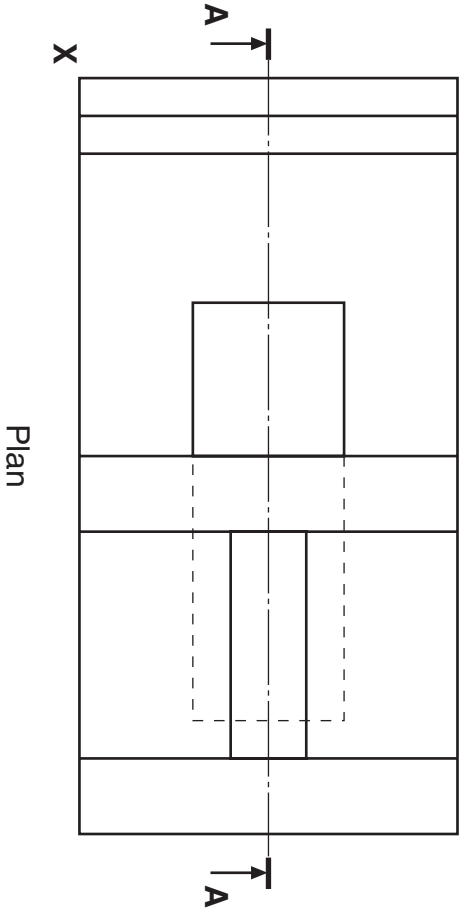
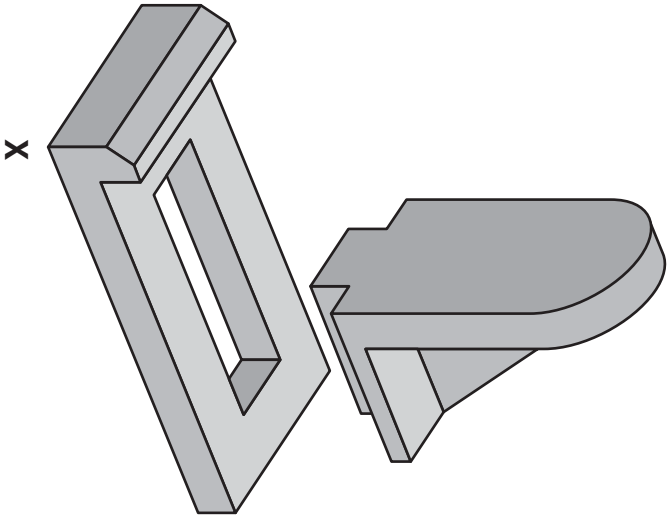
The plan and end elevation of a small display stand are given below.
An illustration of both parts of the stand is also shown.

Draw, in the positions indicated:

- (a) the sectional elevation on **A-A**;
- (b) the **exploded** isometric view of the display stand.

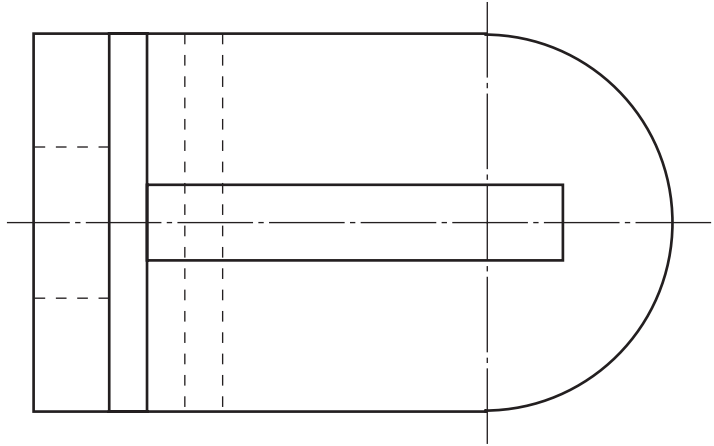
Do not show hidden detail.

(14 marks)



X

Sectional Elevation



End Elevation

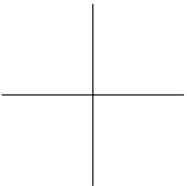
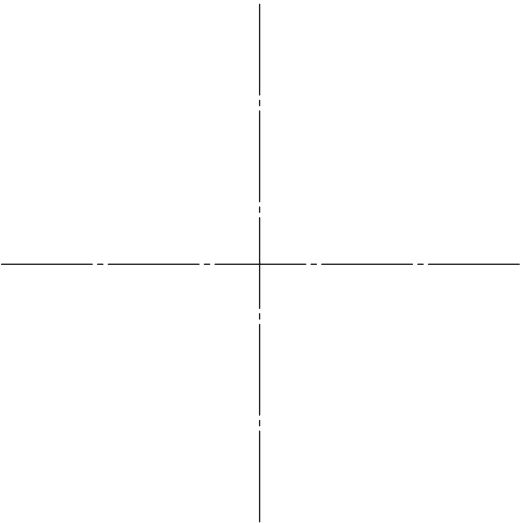
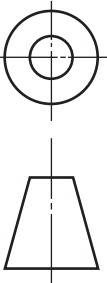
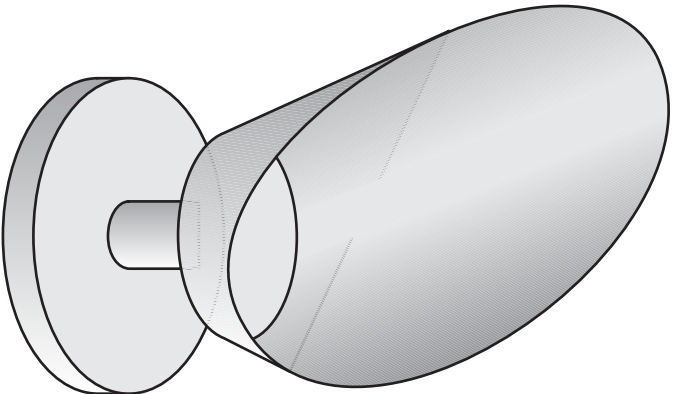


<i>a</i>	
<i>b</i>	
<i>c</i>	
<i>d</i>	
<i>e</i>	
<i>f</i>	
<i>g</i>	
<i>h</i>	
<i>i</i>	
<i>j</i>	
<i>k</i>	
<i>l</i>	
<i>m</i>	
<i>n</i>	

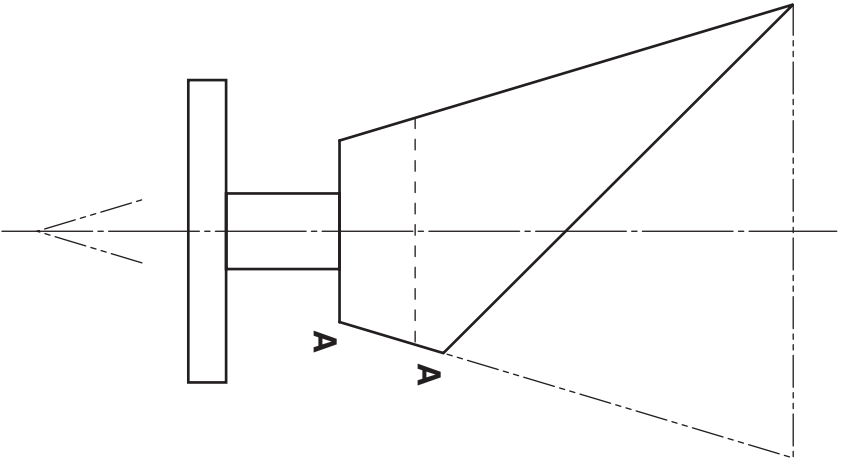
The elevation of a chair based on a cone is given below. An illustration of the chair is shown.
Draw, in the positions indicated:

- (a) the end elevation;
- (b) the plan;
- (c) the surface development of the cone shaped part of the chair opened along **A-A**.

Show all hidden detail. (12 marks)



Plan



Elevation



End Elevation

Development

<i>a</i>	
<i>b</i>	
<i>c</i>	
<i>d</i>	
<i>e</i>	
<i>f</i>	
<i>g</i>	
<i>h</i>	
<i>i</i>	
<i>j</i>	
<i>k</i>	
<i>l</i>	
<i>m</i>	
<i>n</i>	