

STAPLE HERE

FOR OFFICIAL USE

|  |  |  |  |  |  |
|--|--|--|--|--|--|
|  |  |  |  |  |  |
|--|--|--|--|--|--|

**X033/101**

NATIONAL  
QUALIFICATIONS 2008

TUESDAY, 27 MAY  
1.00 PM – 3.00 PM

GRAPHIC  
COMMUNICATION  
INTERMEDIATE 1

Fill in these boxes and read what is printed below.

|                     |       |                           |  |                |  |
|---------------------|-------|---------------------------|--|----------------|--|
| Full name of centre |       |                           |  | Town           |  |
| Forename(s)         |       |                           |  | Surname        |  |
| Date of birth       |       | Scottish candidate number |  | Number of seat |  |
| Day                 | Month | Year                      |  |                |  |
|                     |       |                           |  |                |  |

70 marks are allocated to this paper

- 1 Answer **all** questions.
- 2 Read each question carefully before you answer.
- 3 Written answers may be in **ink** or **pencil**.
- 4 Drawings and sketches **must be in pencil**.
- 5 Dimensions are given in millimetres or as stated.
- 6 Orthographic drawings are in third angle projection.

**At the end of the examination**

check that your name is on every sheet;  
put the sheets in correct numerical order;  
place this sheet on top of the others;  
join all sheets together by **stapling** at the top left-hand corner;  
before leaving the examination room, you must give these sheets to the invigilator  
(if you do not you may lose all the marks for this paper).

| Question           | Marks |
|--------------------|-------|
| 1                  |       |
| 2                  |       |
| 3                  |       |
| 4                  |       |
| 5                  |       |
| 6                  |       |
| 7                  |       |
| 8                  |       |
| 9                  |       |
| <b>Total Marks</b> |       |



[BLANK PAGE]

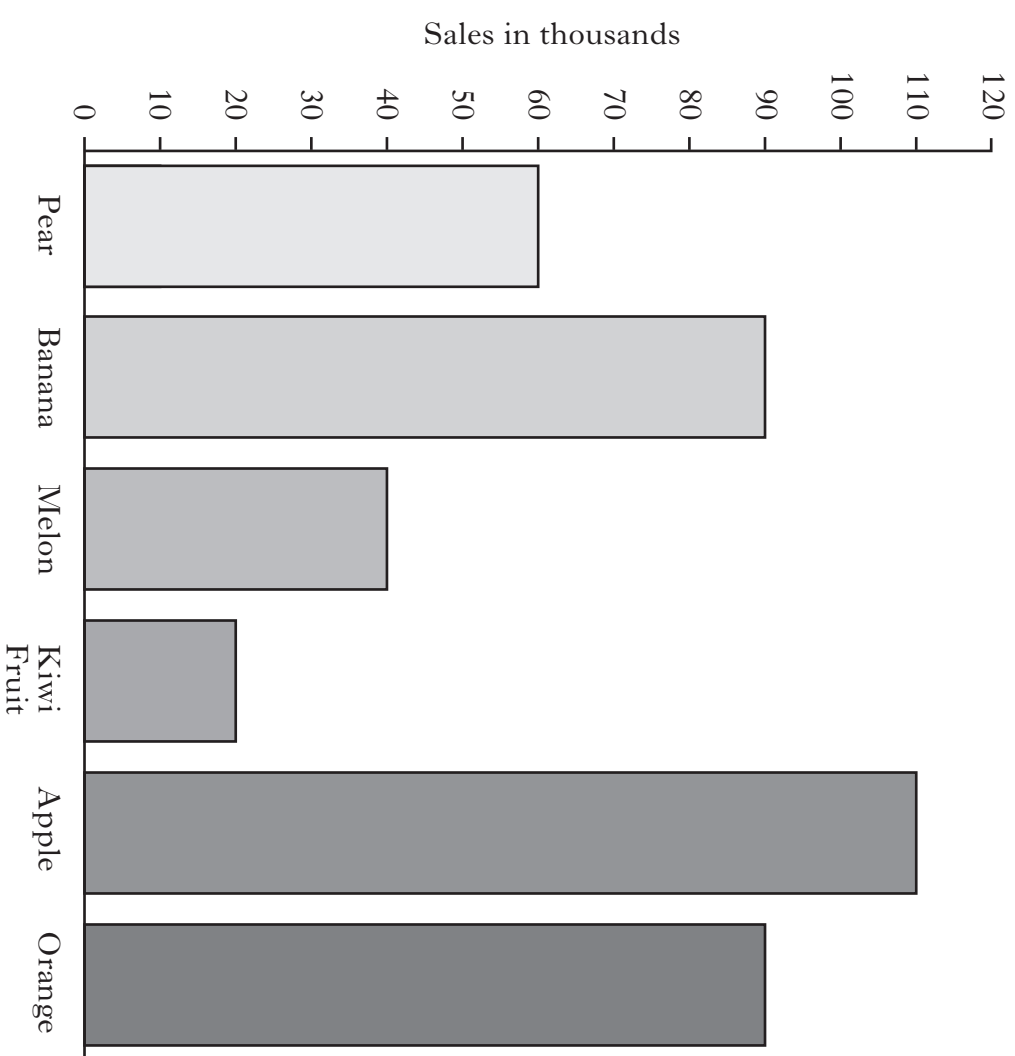
**1**

- (a) State what must be added to a secondary colour in order to make a tertiary colour.  
..... (1)
- (b) State **two** secondary colours.  
..... and ..... (2)
- (c) State an appropriate colour to use in the following situations.
  - (i) To represent something that is warm ..... (1)
  - (ii) To harmonise with orange ..... (1)
  - (iii) To contrast with orange ..... (1)

**(6 marks)**

**2**

Fruit sales in Scotland over the course of one week are shown in the graph below.

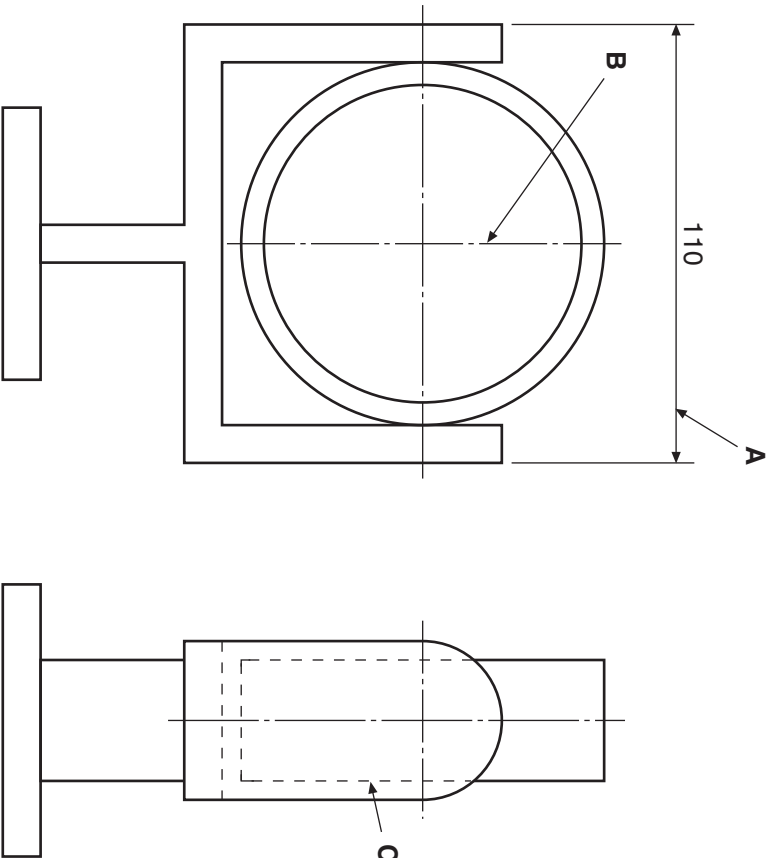


- (a) Which fruit had the most sales? ..... (1)
- (b) Which **two** fruits had the same number of sales?  
..... and ..... (1)
- (c) How many melons were sold? ..... (1)

**(3 marks)**

3

Identify the **three** line types in the orthographic drawing shown below.



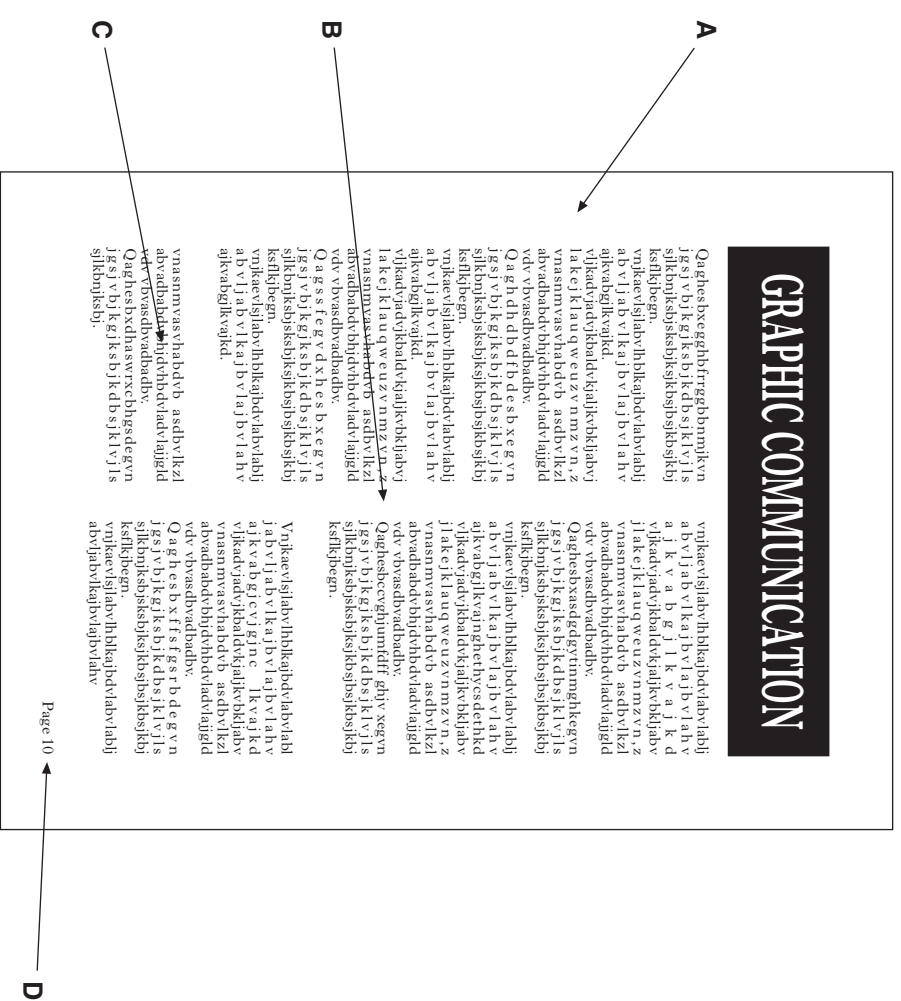
- A ..... (1)
- B ..... (1)
- C ..... (1)

(3 marks)

[X033/101]

4

Identify the **four** Desktop Publishing (DTP) features shown on the magazine page below.



- A ..... (1)
- B ..... (1)
- C ..... (1)
- D ..... (1)

(4 marks)

The end elevation and isometric view of a flat screen TV are given.

**Draw**, full size, in the positions indicated:

- (a) the elevation;
- (b) the plan.

**Show all hidden detail.**

**(10 marks)**

|   |  |
|---|--|
| a |  |
| b |  |
| c |  |
| d |  |
| e |  |
| f |  |
| g |  |
| h |  |
| i |  |
| j |  |
| k |  |
| l |  |
| m |  |
| n |  |

Plan



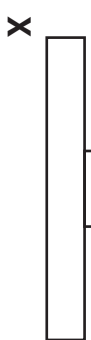
Isometric View



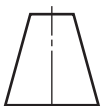
Elevation



End Elevation



[X033/101]



Candidate's Name \_\_\_\_\_

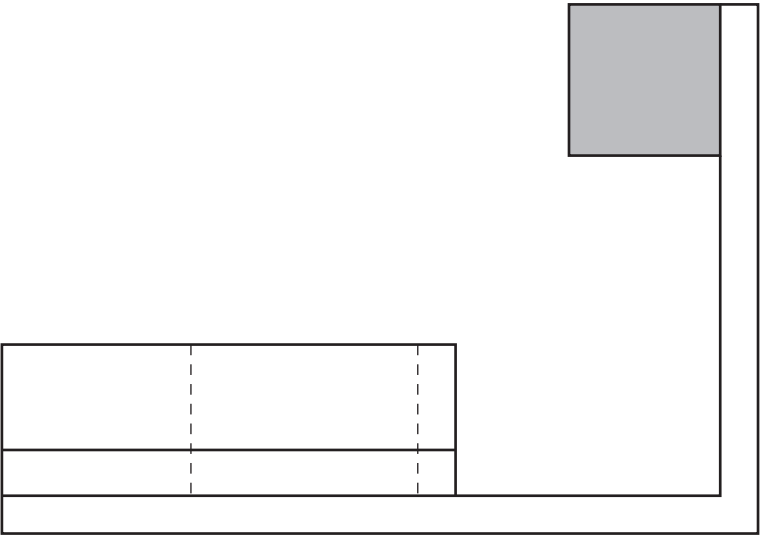
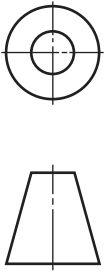
The plan, elevation and end elevation of a room with two pieces of furniture are given.

Draw, in the position indicated, the **Planometric** view of the room, including the wall thickness.

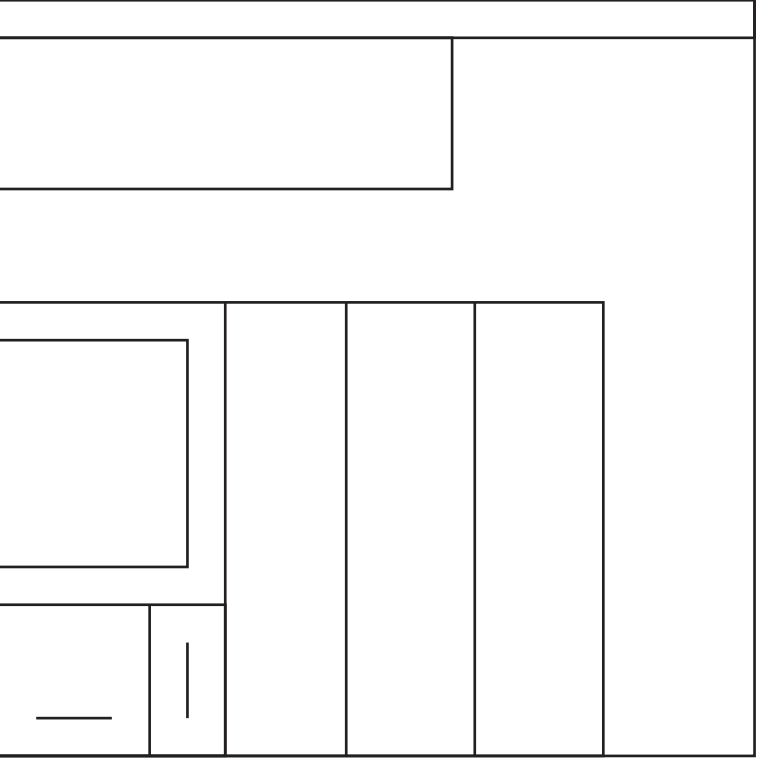
**Do not show hidden detail.**

**Do not show the handles.**

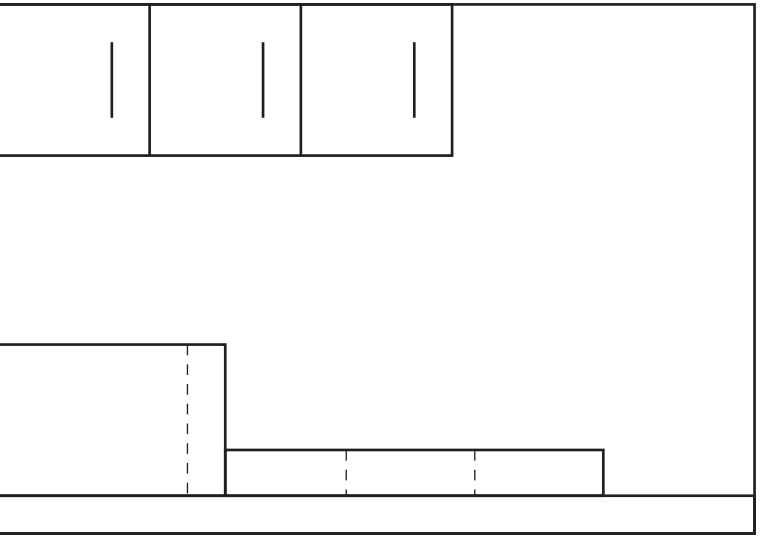
**(11 marks)**



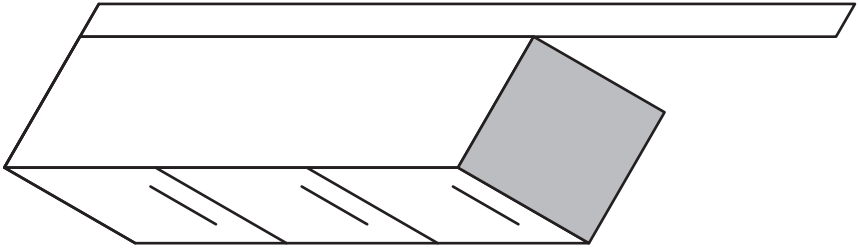
Plan



End Elevation



Elevation

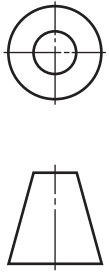


Planometric

|   |  |
|---|--|
| a |  |
| b |  |
| c |  |
| d |  |
| e |  |
| f |  |
| g |  |
| h |  |
| i |  |
| j |  |
| k |  |
| l |  |
| m |  |
| n |  |

7

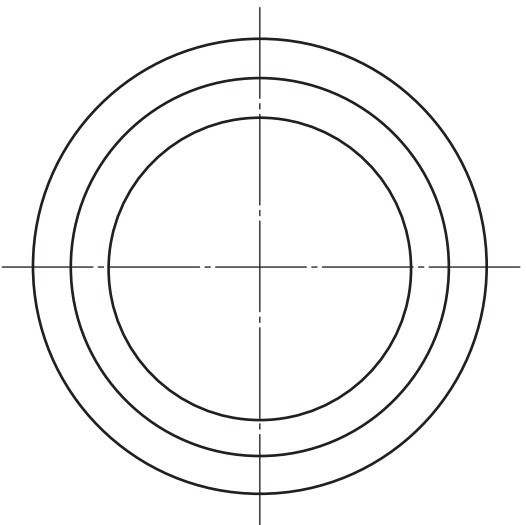
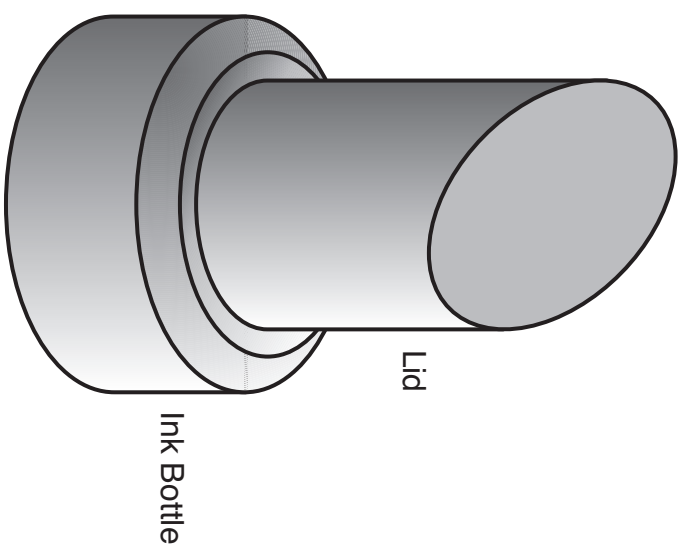
The plan and elevation of an ink bottle are given. An illustration is shown.



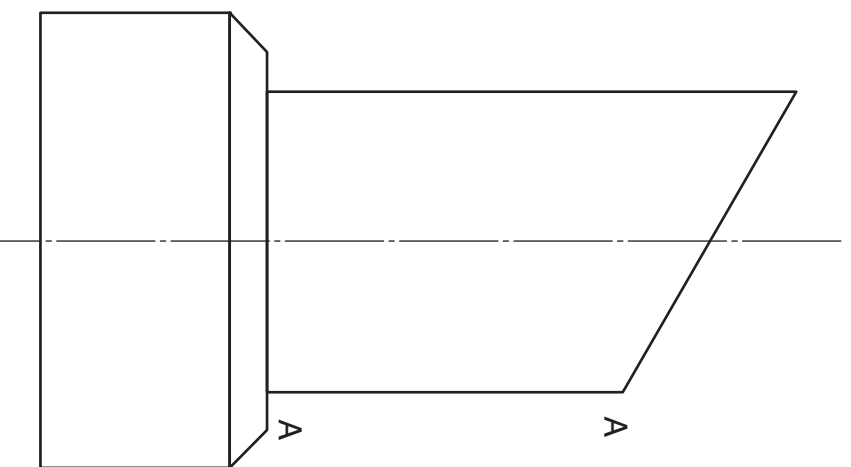
**Draw**, in the positions indicated:

- (a) the end elevation;
- (b) the development of the curved surface of the **lid** opened along A-A.

(12 marks)



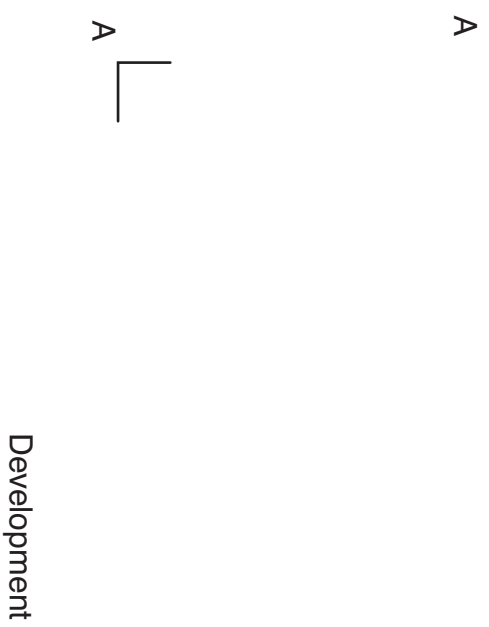
Plan



Elevation



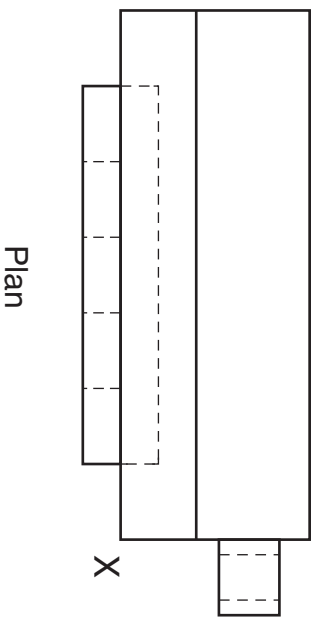
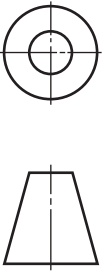
End Elevation



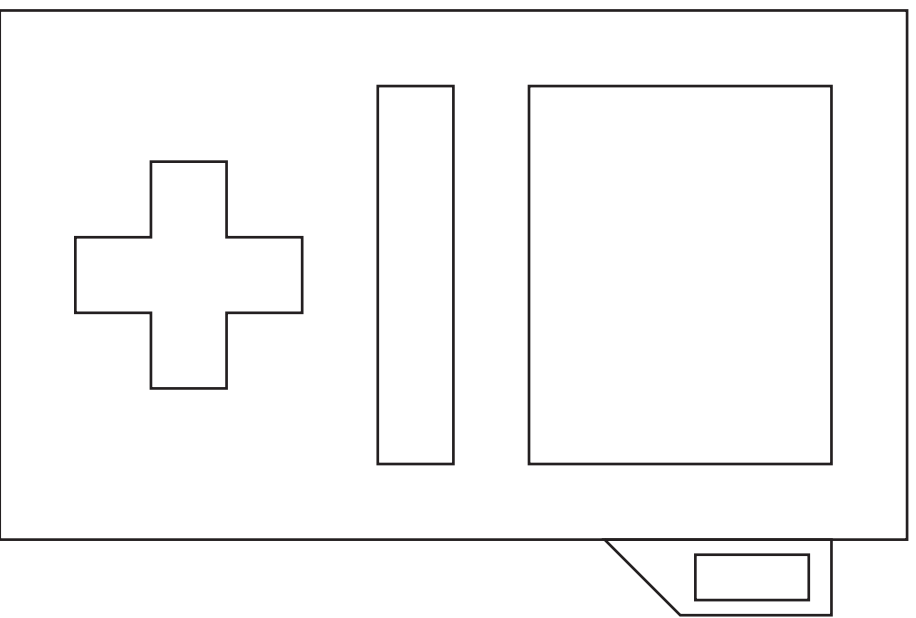
Development

|   |  |
|---|--|
| a |  |
| b |  |
| c |  |
| d |  |
| e |  |
| f |  |
| g |  |
| h |  |
| i |  |
| j |  |
| k |  |
| l |  |
| m |  |
| n |  |
|   |  |

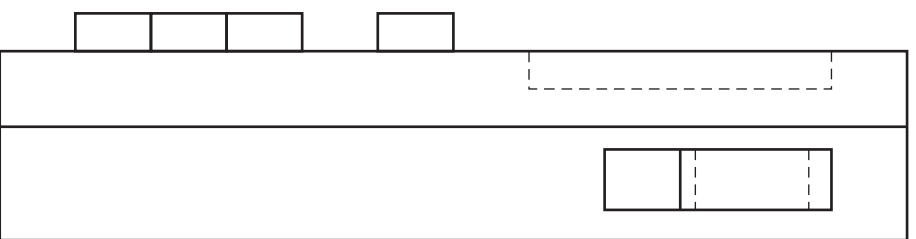
The plan, elevation and end elevation of a handheld computer game are given.  
**Draw, in the position indicated, the isometric view of the game.**  
**Do not show hidden detail.** (11 marks)



Plan



Elevation



End Elevation

Isometric View



|   |  |
|---|--|
| a |  |
| b |  |
| c |  |
| d |  |
| e |  |
| f |  |
| g |  |
| h |  |
| i |  |
| j |  |
| k |  |
| l |  |
| m |  |
| n |  |



9

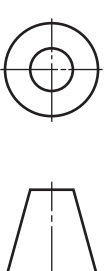
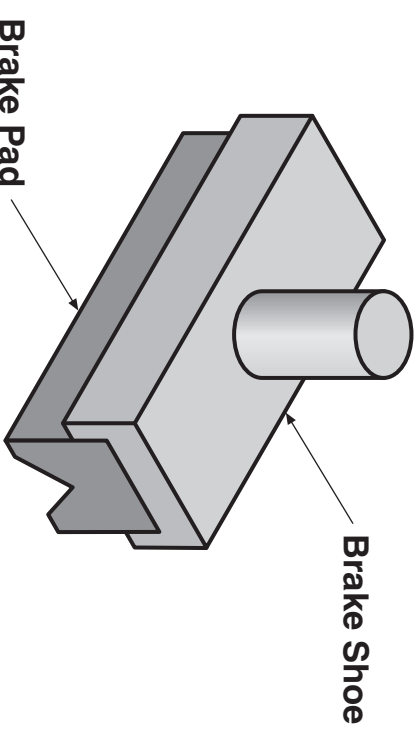
The elevation, end elevation and plan of a bike brake shoe and the end elevation and elevation of a brake pad are given. An illustration is shown.

Draw, in the positions indicated:

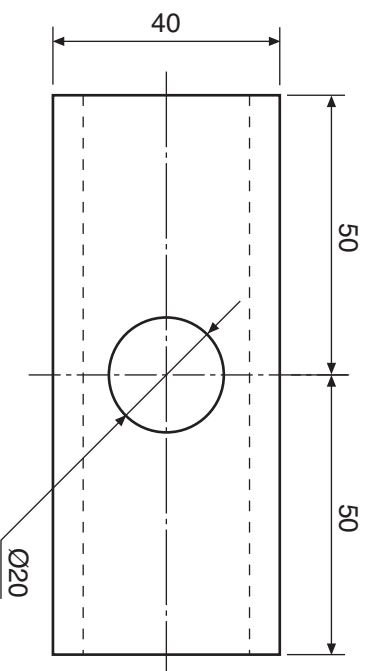
- (a) the assembled end elevation;
- (b) the sectional elevation on A-A of the assembled brake.

Do not show hidden detail.

(10 marks)

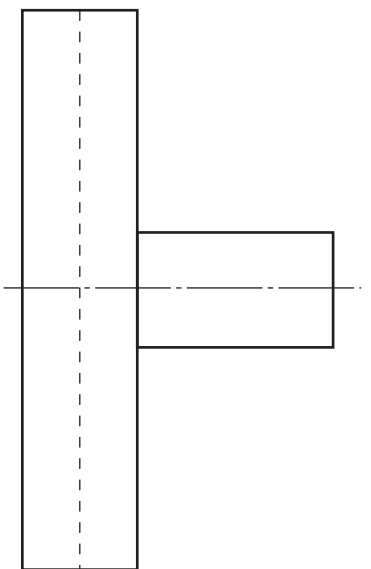


|   |  |
|---|--|
| a |  |
| b |  |
| c |  |
| d |  |
| e |  |
| f |  |
| g |  |
| h |  |
| i |  |
| j |  |
| k |  |
| l |  |
| m |  |
| n |  |

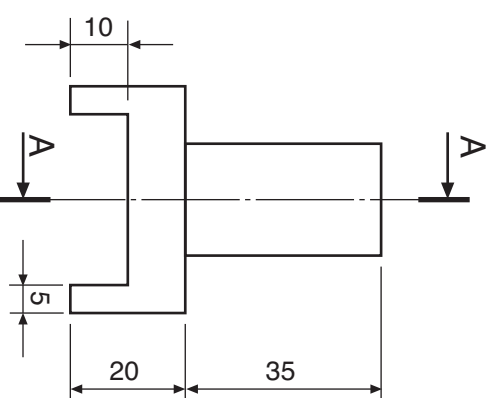


Brake Shoe

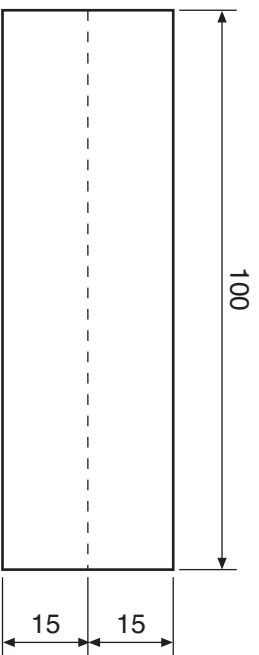
Plan



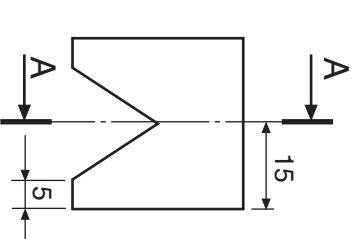
Elevation



End Elevation



Elevation



End Elevation

Sectional Elevation on A-A



End Elevation



[BLANK PAGE]