



2010 Graphic Communication

Standard Grade – General

Finalised Marking Instructions

© Scottish Qualifications Authority 2010

The information in this publication may be reproduced to support SQA qualifications only on a non-commercial basis. If it is to be used for any other purposes written permission must be obtained from the External Print Team, Centre Services, Dalkeith.

Where the publication includes materials from sources other than SQA (secondary copyright), this material should only be reproduced for the purposes of examination or assessment. If it needs to be reproduced for any other purpose it is the centre's responsibility to obtain the necessary copyright clearance. SQA's External Print Team, Centre Services, at Dalkeith may be able to direct you to the secondary sources.

These Marking Instructions have been prepared by Examination Teams for use by SQA Appointed Markers when marking External Course Assessments. This publication must not be reproduced for commercial or trade purposes.

**2010 Graphic Communication SG General
Marking Instructions**

1	(a)	Command:	Line	KI 1
	(b)	Command:	Fillet/Trim Round	KI 1
	(c)	Command:	Arc	KI 1
	(d)	Command:	Chamfer/Trim Bevel	KI 1
	(e)	Command:	Circle	KI 1
	(f)	Command:	Text	KI 1
	(g)	Command:	Trim/Break	KI 1
	(h)	Command:	Copy	KI 1
	(i)	Command:	Array/Polar Array/Circular Array	KI 1
	(j)	Command:	Zoom/Magnify/Scale	KI 1

TOTAL KI 10

2	(a)	A	Sinktop	
		B	Switch	
		C	Socket (Double Socket)	
		D	Lamp	
		E	Brickwork	KI 5
	(b)	F	Shower Tray	
		G	Wash Basin	
		H	Bath	KI 3

TOTAL KI 8

- 3 (a) P Isometric
 Q Oblique
 R Planometric
 S

2pt Perspective

 KI 4
- (b) Horizon/Eye level KI 1
- (c) Vanishing/VP KI 1
- (d) Angle M 60°
 Angle N 30° KI 2

TOTAL KI 8

- 4 (a) Black KI 1
- (b) White KI 1
- (c) Colour Blue-Violet (Blue-Purple)
 Colour Blue-Green KI 2
- (d) A secondary colour KI 1
- (e) (i) Yellow/Orange
 (ii) Blue/Green/Violet/Blue-Violet/Blue-Green
 (iii) Green/Brown
 (iv) Red KI 4

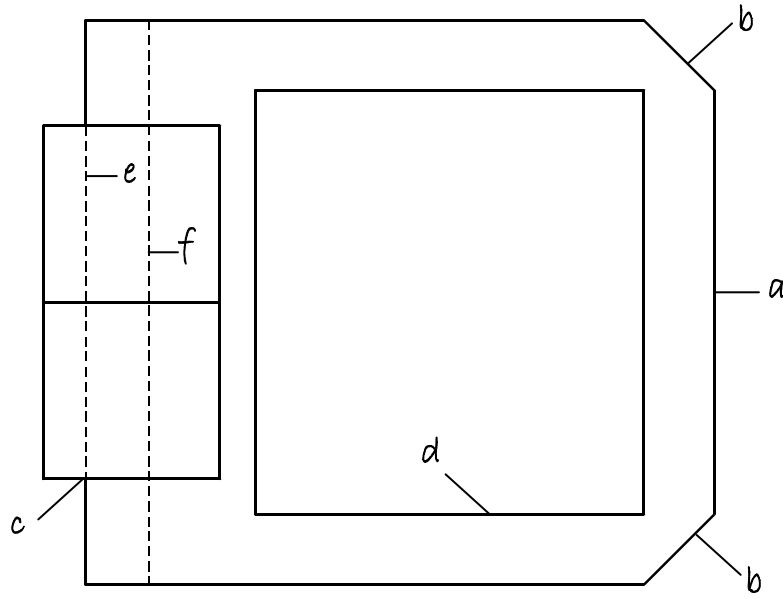
TOTAL KI 9

Question 5

Plan

- (a) Total width 80 1
- (b) Angled lines (both) 1
- (c) Buttons position + width + line 1
- (d) Rectangle position + length + breadth 1
- (e) Broken line 1
- (f) Broken line 1

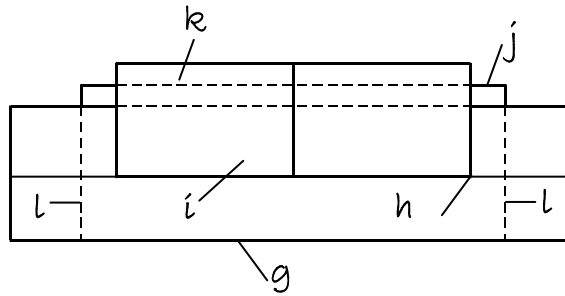
Total DA 6



End Elevation

- (g) Width and height + line 1
- (h) Buttons position 1
- (i) Buttons width + line + height 1
- (j) Screen position + width + height 1
- (k) Broken lines screen (both lines) 1
- (l) Broken lines (both lines) 1

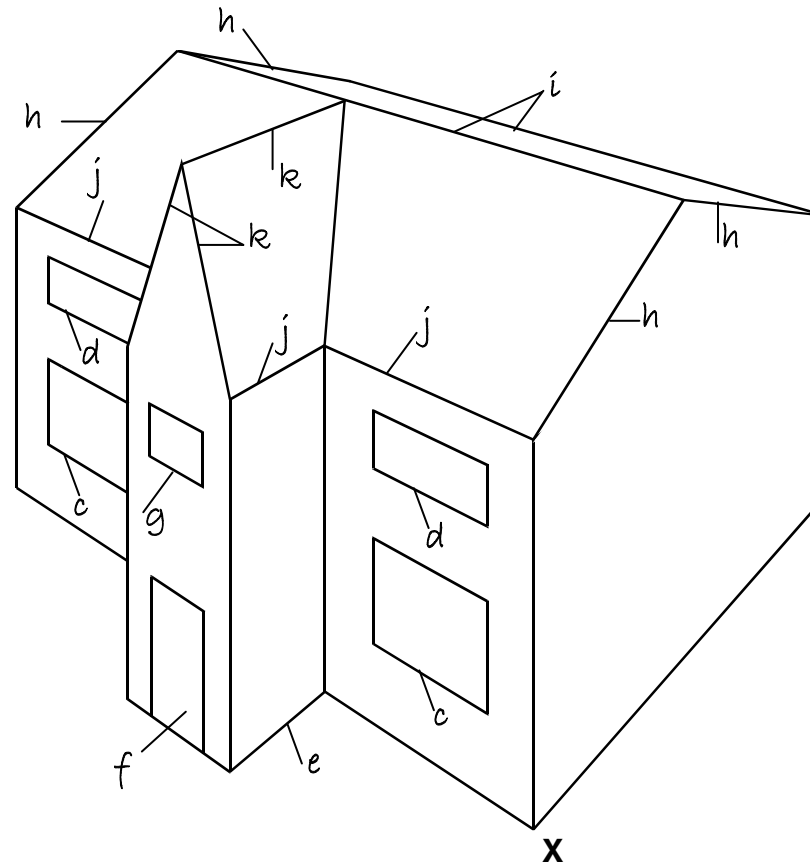
Total DA 6



Question 6

- | | | |
|-----|--|---|
| (a) | Sketch in good perspective | 1 |
| (b) | House in good proportion
(foreshortening) | 2 |
| (c) | Windows in line | 1 |
| (d) | Windows in line | 1 |
| (e) | Position (in middle) | 1 |
| (f) | Door | 1 |
| (g) | Window (in line with door (f)) | 1 |
| (h) | Roof lines (3 from 4) | 1 |
| (i) | Roof lines | 1 |
| (j) | Roof lines (2 lines) | 1 |
| (k) | Roof lines (3 from 4) | 1 |

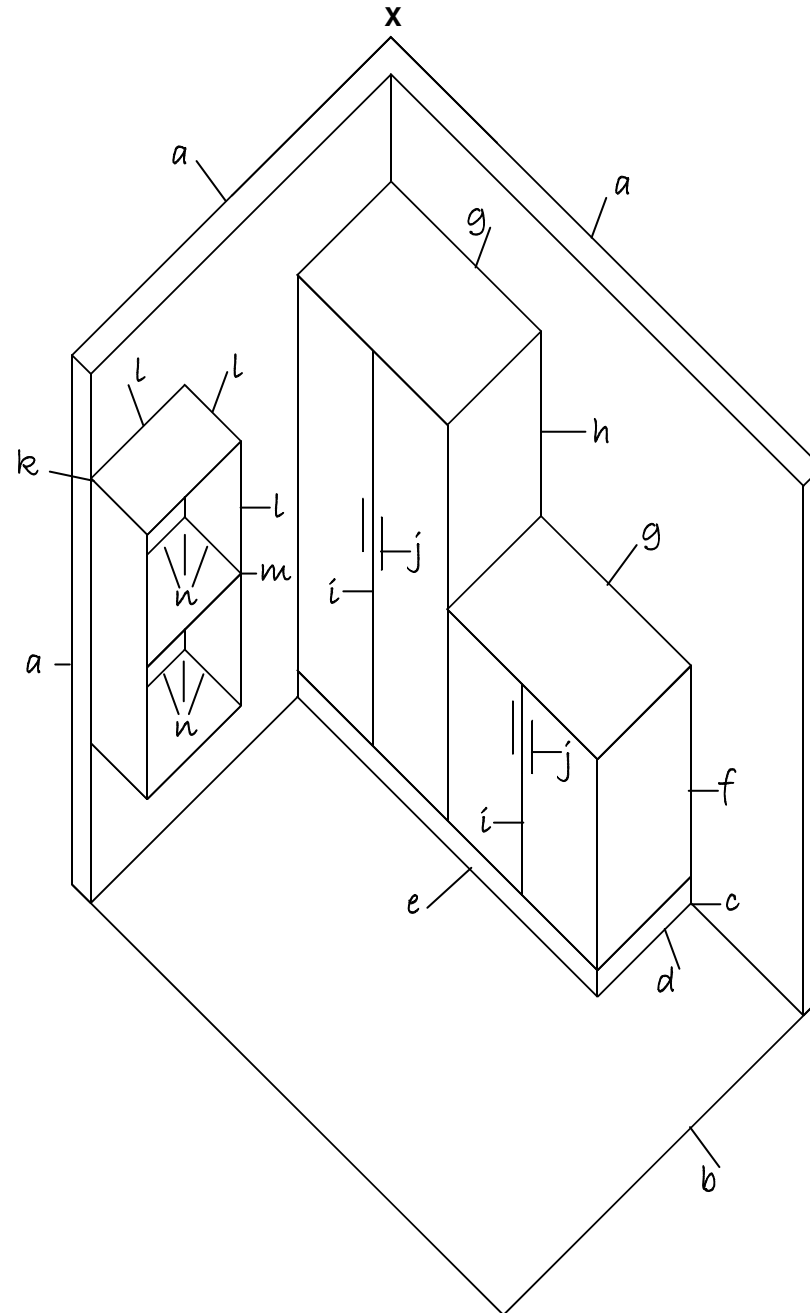
Total DA 12



Question 7

- | | | |
|-----|---|---|
| (a) | Wall detail ($1 \times b \times h$) | 1 |
| (b) | Floor ($1 \times b$) (FTE from (a)) | 1 |
| (c) | Cupboard position | 1 |
| (d) | Cupboard width 25 | 1 |
| (e) | Length 80 | 1 |
| (f) | Cupboard height 45 | 1 |
| (g) | Length (either) | 1 |
| (h) | Height 35 | 1 |
| (i) | Door lines (both) (in middle & plinth) | 1 |
| (j) | Handles (shown/drawn) | 1 |
| (k) | Position of shelves | 1 |
| (l) | Shelves crate ($1 \times b \times h$) | 1 |
| (m) | Shelf (position correct) (middle) | 1 |
| (n) | Shelf lines shown (all six) | 1 |

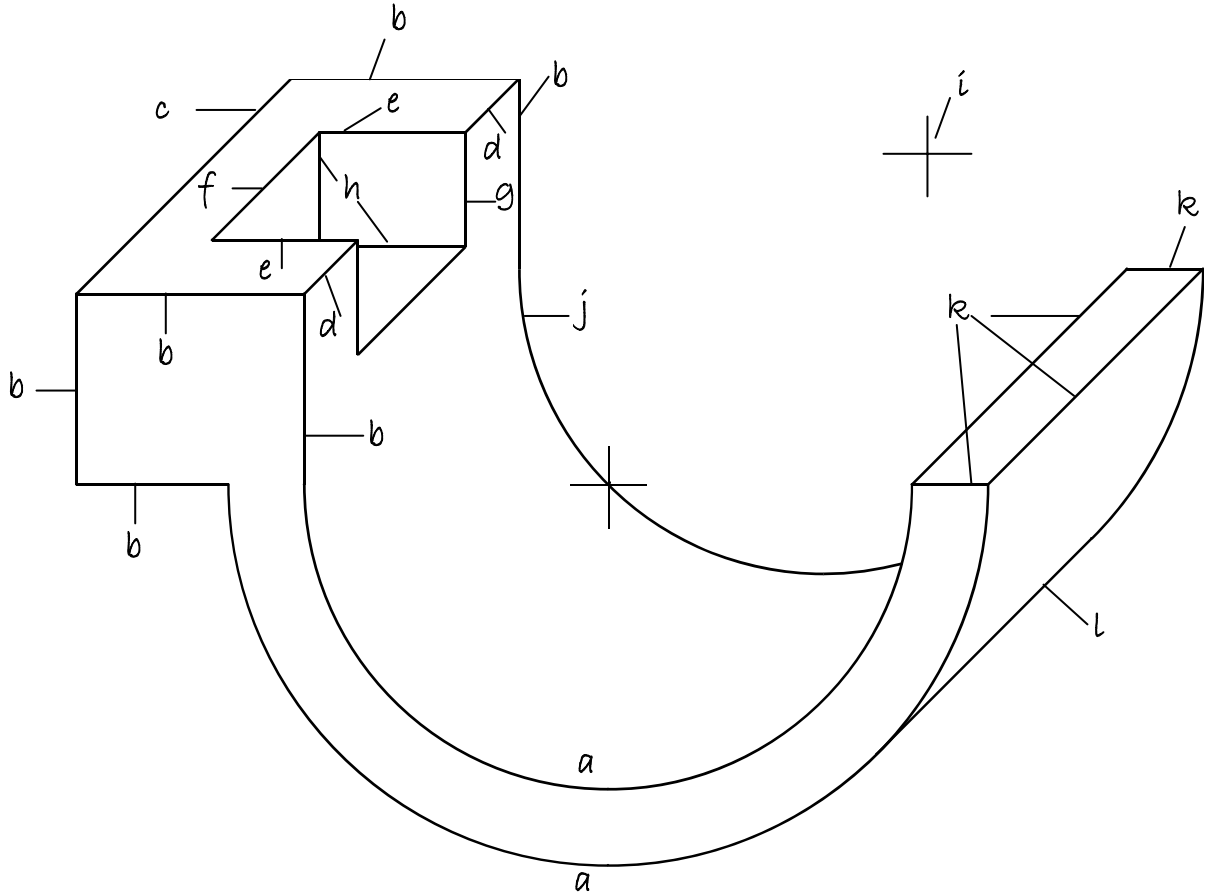
Total DA 14



Question 8

- | | | |
|-----|-------------------------------|---|
| (a) | Radius 40 and 50 | 1 |
| (b) | Corner detail (4 out of 6) | 1 |
| (c) | Width 40 | 1 |
| (d) | Width 10 | 1 |
| | } must be ½ size | |
| (e) | Length 20 (both lines) | 1 |
| (f) | Width 20 (FTE) | 1 |
| (g) | Height | 1 |
| (h) | Corner line | 1 |
| (i) | Centre position correct (FTE) | 1 |
| (j) | Part radius 40 | 1 |
| (k) | Lines (FTE) | 1 |
| (l) | Part radius + tangent line | 1 |

Total DA 12



Question 9

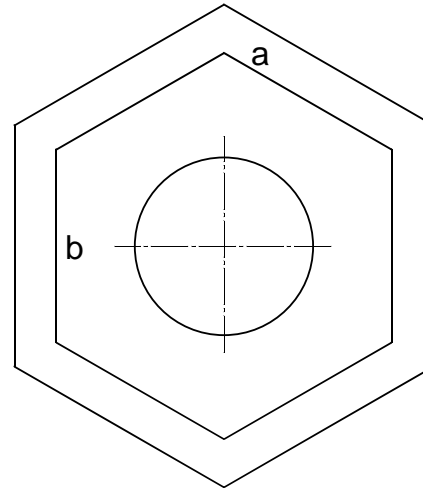
Plan

- (a) Correct orientation and size (across flats) 1
- (b) Six equal sides/hexagon 1

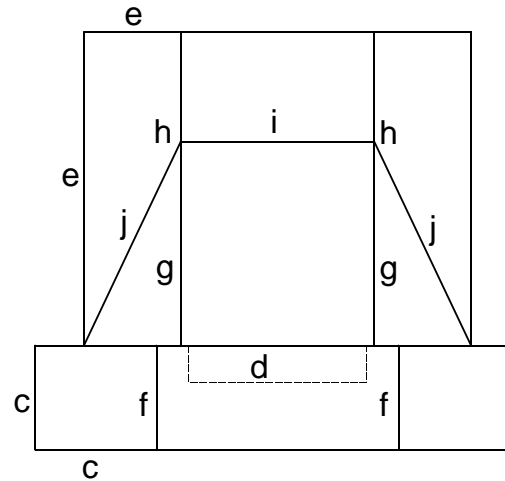
End Elevation

- (c) Base width and height 1
- (d) Hidden detail (all 3 correct) 1
- (e) Body width and height (FTE) 1
- (f) Base vertical lines (both) 1
- (g) Body vertical lines (both) 1
- (h) Correct heights (both) 1
- (i) Horizontal line 1
- (j) Sloping lines (both) 1

Total DA 10



PLAN



END ELEVATION

[END OF MARKING INSTRUCTIONS]