



2013 Graphic Communication

Standard Grade Foundation

Finalised Marking Instructions

© Scottish Qualifications Authority 2013

The information in this publication may be reproduced to support SQA qualifications only on a non-commercial basis. If it is to be used for any other purposes written permission must be obtained from SQA's NQ Assessment team.

Where the publication includes materials from sources other than SQA (secondary copyright), this material should only be reproduced for the purposes of examination or assessment. If it needs to be reproduced for any other purpose it is the centre's responsibility to obtain the necessary copyright clearance. SQA's NQ Assessment team may be able to direct you to the secondary sources.

These Marking Instructions have been prepared by Examination Teams for use by SQA Appointed Markers when marking External Course Assessments. This publication must not be reproduced for commercial or trade purposes.

Part One: General Marking Principles for Graphic Communication Standard Grade Foundation

This information is provided to help you understand the general principles you must apply when marking candidate responses to questions in this Paper. These principles must be read in conjunction with the specific Marking Instructions for each question.

- (a)** Marks for each candidate response must always be assigned in line with these general marking principles and the specific Marking Instructions for the relevant question. If a specific candidate response does not seem to be covered by either the principles or detailed Marking Instructions, and you are uncertain how to assess it, you must seek guidance from your Team Leader/Principal Assessor.
- (b)** Marking should always be positive ie, marks should be awarded for what is correct and not deducted for errors or omissions.

GENERAL MARKING ADVICE: Graphic Communication Standard Grade Foundation

The marking schemes are written to assist in determining the “minimal acceptable answer” rather than listing every possible correct and incorrect answer. The following notes are offered to support Markers in making judgements on candidates’ evidence, and apply to marking both end of unit assessments and course assessments.

Part Two: Marking Instructions for each Question

- | | | | |
|----------|----------|---|-------------|
| 1 | a | Any one from – Red, Red-orange, Orange, Violet, Red-Violet | KI 1 |
| 1 | b | Any two from– Yellow, Yellow-Green, Blue, Blue-Green | KI 2 |
| 1 | c | Either– Red-Violet or Red-Orange | KI 1 |
| 1 | d | (i) Tint
(ii) Shade | KI 2 |
| 1 | e | Secondary Colour: Orange or Green
Tertiary Colour: Blue - Violet | KI 2 |

Total KI 8

2

Factors	Advantage	Disadvantage
Drawings are more accurate	✓	
The speed at which a designer can change mistakes	✓	
The possibility that data can be lost		✓
The constant need to update software		✓
A library of commonly used parts can be created	✓	
Storage of drawings takes up less space	✓	
The cost of buying new computers		✓
The speed of producing new drawings	✓	

3	a	Bar Chart	KI 1
3	b	Liberal Democrats	KI 1
3	c	2005	KI 1
3	d	Labour	KI 1
3	e	Conservatives	KI 1
3	f	2010	KI 1

Total KI 6

4 a Orthographic **KI 1**

4 b P Visible outline/Solid/Continuous thick **KI 4**

Q Broken/Hidden outline or edge, Dashed thin, Hidden detail

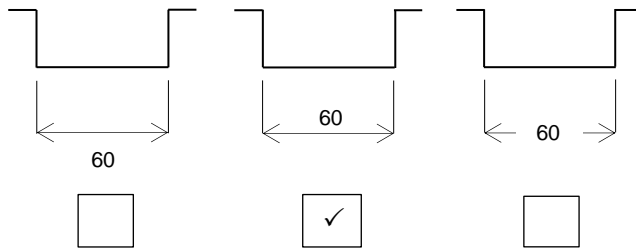
R Centre/Chain

S Hatching/Continuous thin

4 c Section/Sectional Elevation **KI 1**

4 d 45 Deg **KI 1**

4 e **KI 1**

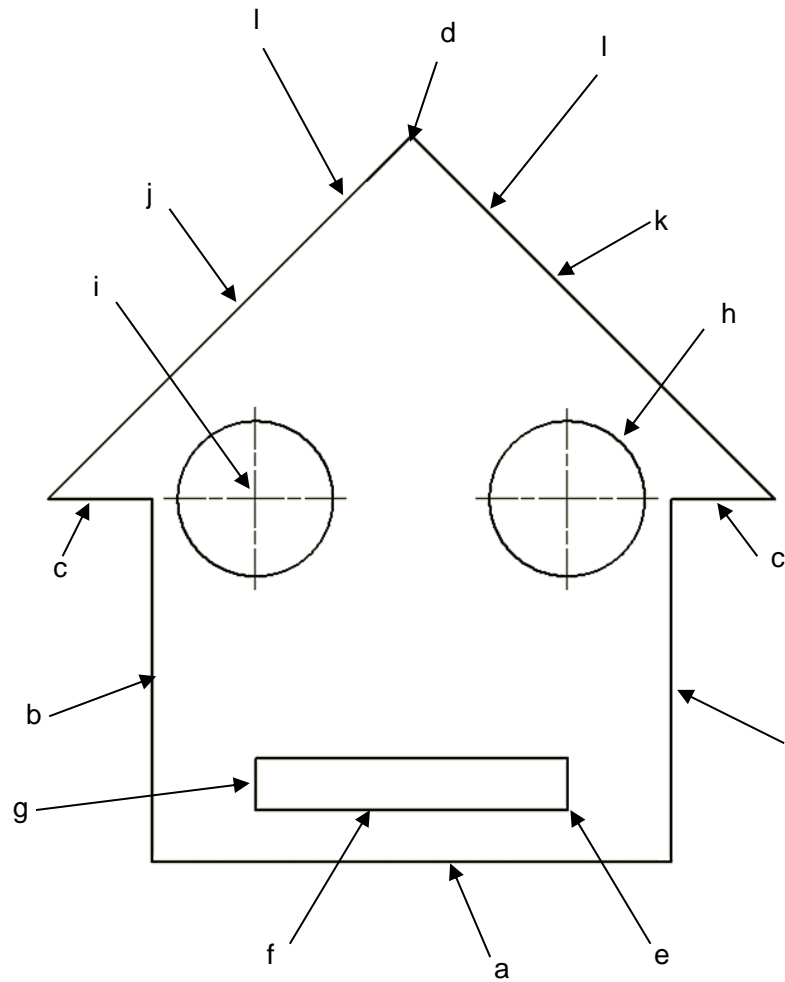


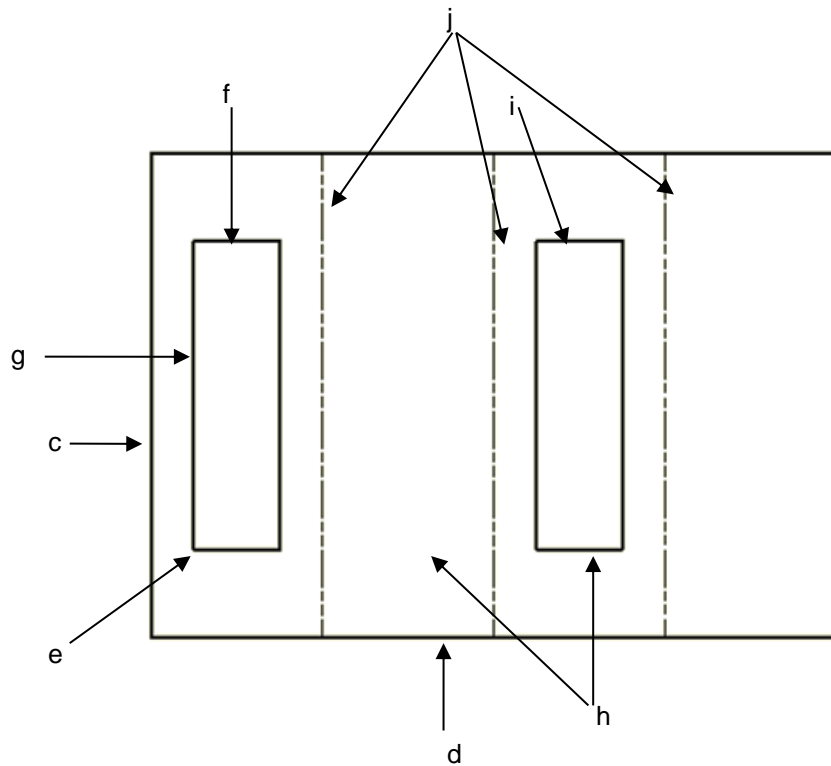
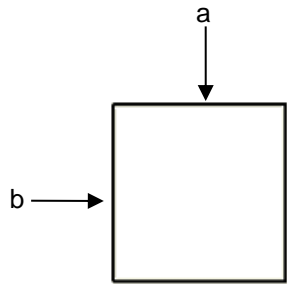
Total KI 8

Question 5

- (a) Base 100 1
- (b) Sides 70, both 1
- (c) Length, both 1
- (d) Position of apex,
- height not important 1
- (e) Mouth position, any corner 1
- (f) Length of mouth 60 1
- (g) Height of mouth 10 1
- (h) Diameter 30, either 1
- (i) Position of circles 1
- (j) Angle at 45 degrees 1
- (k) Angle at 45 degrees 1
- (l) Lines, both 1

Total 12





Question 6

Plan

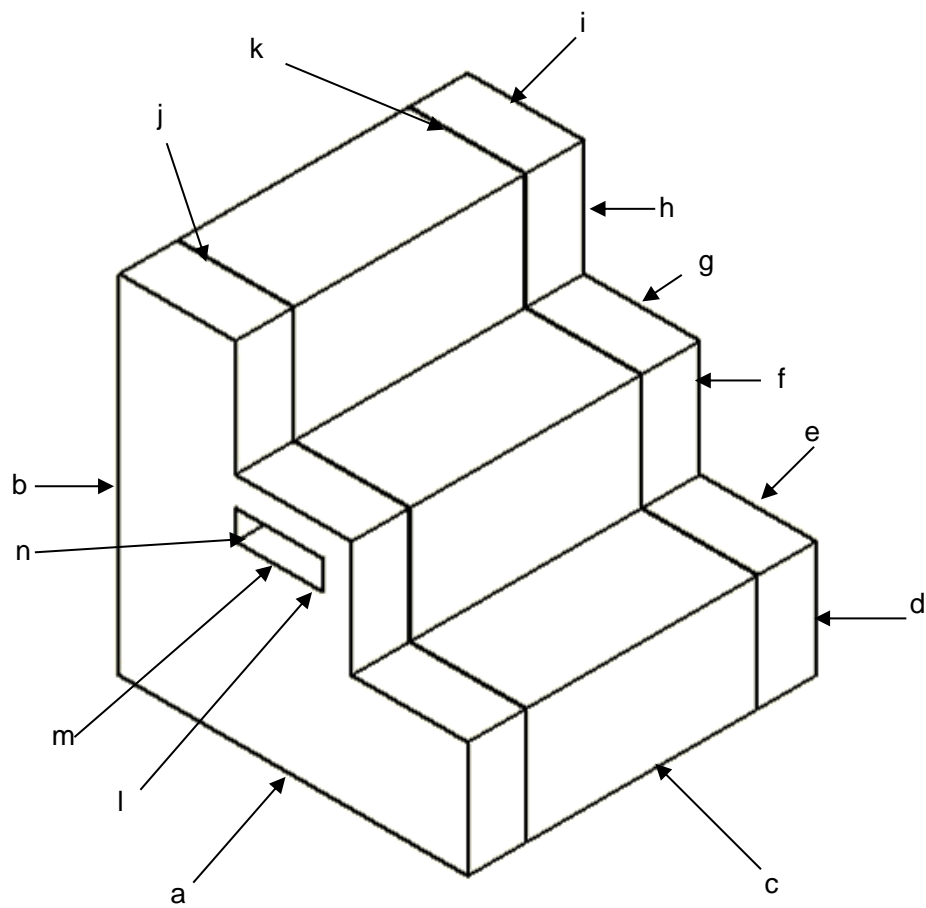
- (a) Length 40 1
- (b) Depth 40 1

Development

- (c) Height 1
- (d) Overall length 160 1
- (e) Position of window, any corner, any window 1
- (f) Width of window 20 1
- (g) Height of window 70 1
- (h) Spacing correct between windows
- ie not adjacent windows 1
- (i) Size of second window 1
- (j) Lines (fold or outline) 1

Total 10



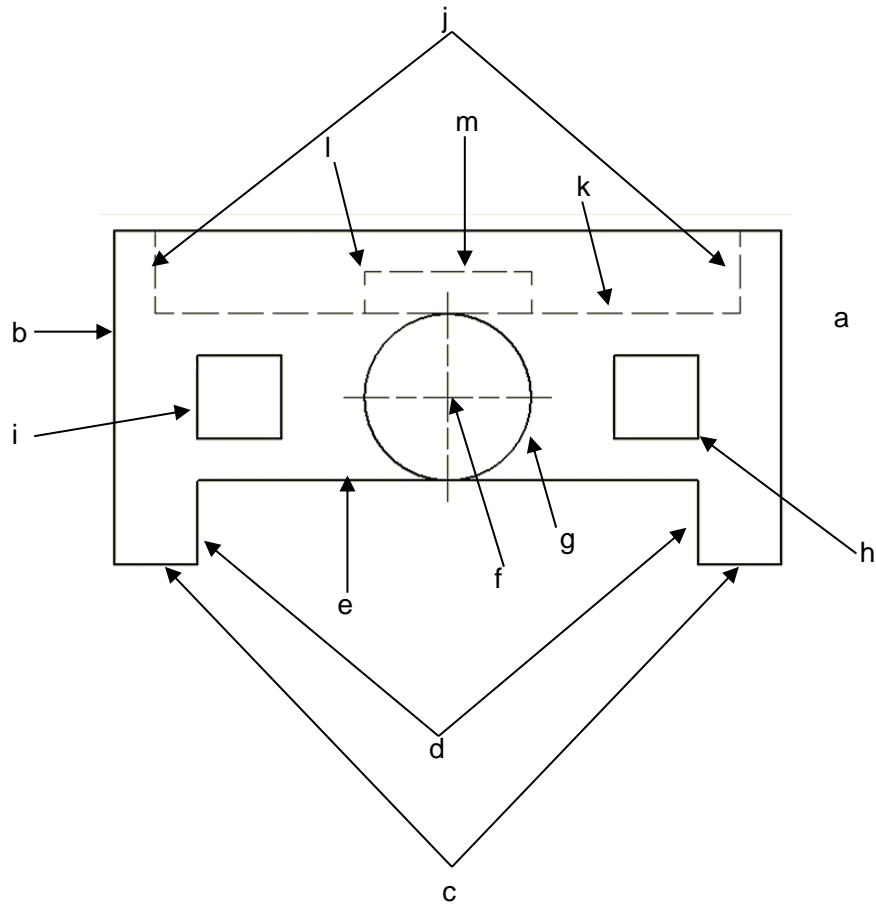


Question 7

- (a) Crate length 60 1
- (b) Crate height 60 1
- (c) Crate depth 60 1
- (d) Step height 20 1
- (e) Step length 20 1
- (f) Step height 20 1
- (g) Step length 20 1
- (h) Step height 20 1
- (i) Step length 20 1
- (j) Track line 10 1
- (k) Track line 10 or 40 1
- (l) Handle position, any corner 1
- (m) Handle size l & h 1
- (n) Handle depth 1

Total 14





Question 8

- (a) Correct projection 1
- (b) Height 40 1
- (c) Line 10 (both) 1
- (d) Line 10 (both) 1
- (e) Line 60 1
- (f) Circle position 1
- (g) Circle diameter 1
- (h) Square position, any corner 1
- (i) Square size 10 (both) 1
- (j) Hidden detail sides, both 1
- (k) Hidden detail base 1
- (l) Position of dock, any corner 1
- (m) Hidden detail (all 3 lines) 1

Total 13



[END OF MARKING INSTRUCTIONS]