



2011 Graphic Communication

Standard Grade – Foundation

Finalised Marking Instructions

© Scottish Qualifications Authority 2011

The information in this publication may be reproduced to support SQA qualifications only on a non-commercial basis. If it is to be used for any other purposes written permission must be obtained from SQA's NQ Delivery: Exam Operations Team.

Where the publication includes materials from sources other than SQA (secondary copyright), this material should only be reproduced for the purposes of examination or assessment. If it needs to be reproduced for any other purpose it is the centre's responsibility to obtain the necessary copyright clearance. SQA's NQ Delivery: Exam Operations Team may be able to direct you to the secondary sources.

These Marking Instructions have been prepared by Examination Teams for use by SQA Appointed Markers when marking External Course Assessments. This publication must not be reproduced for commercial or trade purposes.

**2011 Graphic Communication SG Foundation
Marking Instructions**

1 (a)

Name	Input	Output
Mouse	✓	
Laser printer		✓
Plotter		✓
Keyboard	✓	
Scanner	✓	

KI 5

- (b)**
- (i) Word Processing/DTP
 - (ii) CAD
 - (iii) Illustration/Paint
 - (iv) DTP

KI 4

TOTAL KI 9

2 (a)

COLOUR	PRIMARY	SECONDARY	TERTIARY
RED	✓		
VIOLET		✓	
YELLOW-ORANGE			✓
BLUE-GREEN			✓
GREEN		✓	
BLUE	✓		

KI 6

- (b)**
- Green, Yellow-Green
 - Yellow-Orange, Orange
 - Any 2

KI 2

TOTAL KI 8

3 (a)

	Advantage	Disadvantage
Constant need to update software		✓
Designs could be produced faster	✓	
Changes are easier to make	✓	
Easier to edit drawings	✓	
Storage of designs would take less space	✓	
New hardware would be expensive		✓
New designs could be produced from existing designs more easily	✓	

KI 7

(b) To ensure that you do not lose your work if the computer crashes or freezes.

KI 1

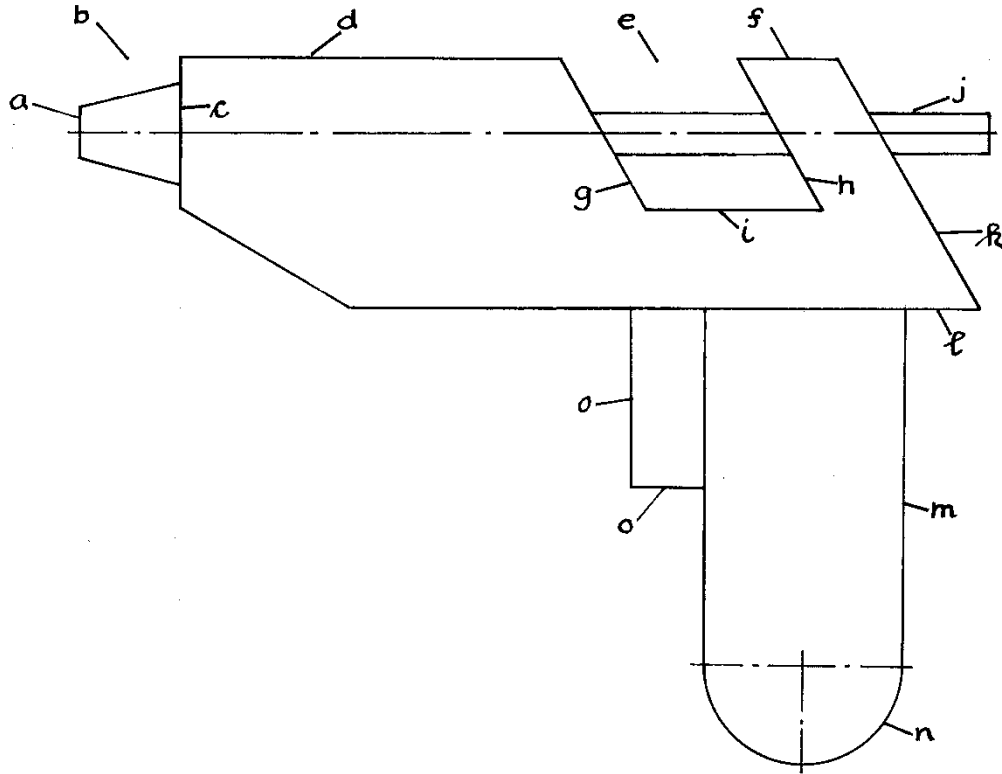
TOTAL KI 8

4 (a)

Centre	2
Hidden	4
Cutting plane	5
Outline	1
Hatching	3

KI 5

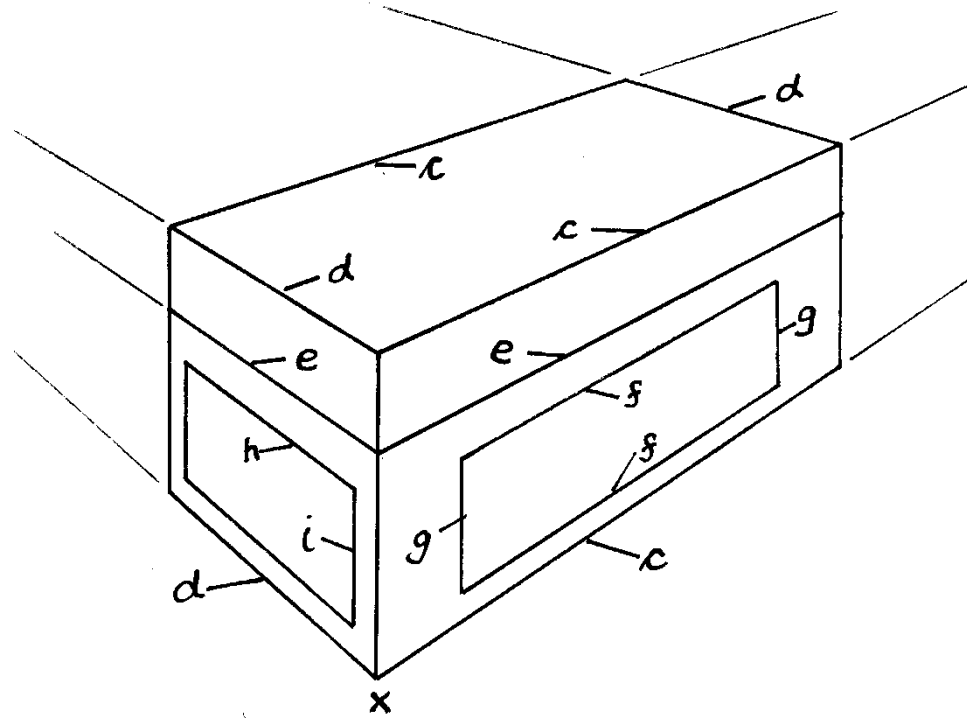
TOTAL KI 5



Question 5

- | | | |
|-----|-----------------------------|---|
| (a) | Diameter 10 | 1 |
| (b) | Length 20 | 1 |
| (c) | Diameter 20 | 1 |
| (d) | Length 75 | 1 |
| (e) | Length 35 | 1 |
| (f) | Length 20 | 1 |
| (g) | Sloping lines at 60° | 1 |
| (h) | Sloping line length (30mm) | 1 |
| (i) | Line | 1 |
| (j) | Diameter 8 + correct length | 1 |
| (k) | Sloping line 60 | 1 |
| (l) | Length 15 | 1 |
| (m) | Height 70 | 1 |
| (n) | Radius 20 | 1 |
| (o) | Trigger length + height | 1 |

Total DA 15



Question 6

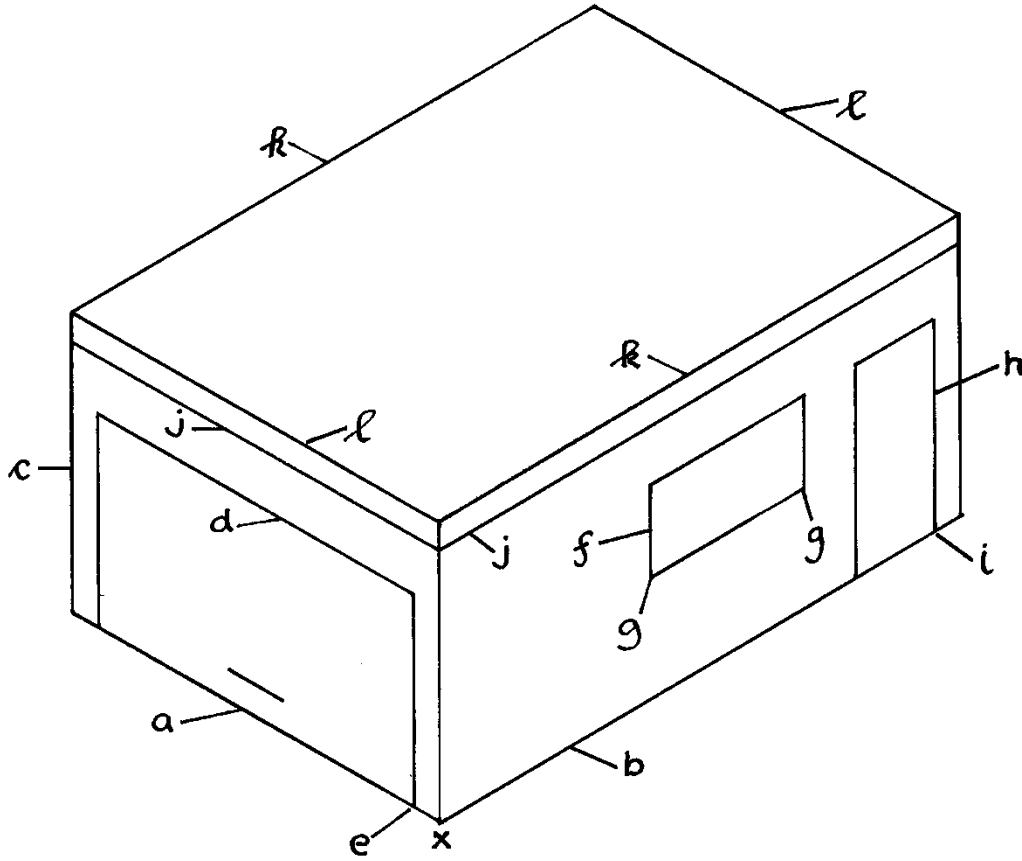
- (a) Good perspective 1
- (b) Good proportion (crate size) 1
- (c) 3 lines to vpr 1
- (d) 3 lines to vpl 1
- (e) Lid lines (both) 1
- (f) 2 label lines to vpr 1
- (g) 2 label lines vertical 1
- (h) 2 end label lines to vpl 1
- (i) 2 end label lines vertical 1
- (j) Labels good proportion + perspective 1

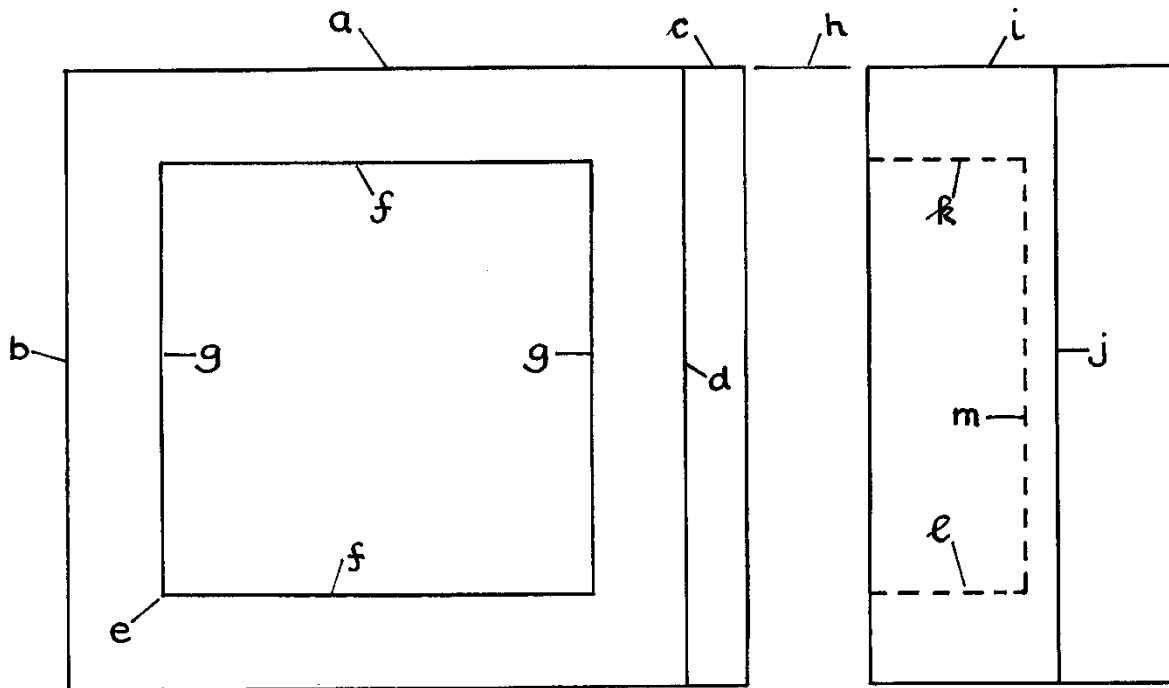
Total DA 10

Question 7

- (a) Crate length 1
- (b) Crate breadth 1
- (c) Crate height 1
- (d) Door size (l x h) 1
- (e) Door position 1
- (f) Window size 1
- (g) Window position 1
- (h) Side door size 1
- (i) Side door position 1
- (j) 2 roof lines shown 1
- (k) 2 side roof edges 1
- (l) Front and back roof edges 1

Total DA 12





Question 8

Elevation

- (a) Length 100 1
- (b) Height 100 1
- (c) Length 10 1
- (d) Line (outline) 1
- (e) Position correct 1
- (f) 2 horizontal lines (70 long) 1
- (g) 2 vertical lines (70 high) 1

End Elevation

- (h) Correct projection 1
- (i) Width 50 1
- (j) Line position correct (FTE from (h)) 1
- (k) Broken line 1
- (l) Broken line (FTE from (k)) 1
- (m) Vertical broken line 1

Total DA 13

[END OF MARKING INSTRUCTIONS]