



**2010 Graphic Communication**

**Standard Grade – Foundation**

**Finalised Marking Instructions**

© Scottish Qualifications Authority 2010

The information in this publication may be reproduced to support SQA qualifications only on a non-commercial basis. If it is to be used for any other purposes written permission must be obtained from the External Print Team, Centre Services, Dalkeith.

Where the publication includes materials from sources other than SQA (secondary copyright), this material should only be reproduced for the purposes of examination or assessment. If it needs to be reproduced for any other purpose it is the centre's responsibility to obtain the necessary copyright clearance. SQA's External Print Team, Centre Services, at Dalkeith may be able to direct you to the secondary sources.

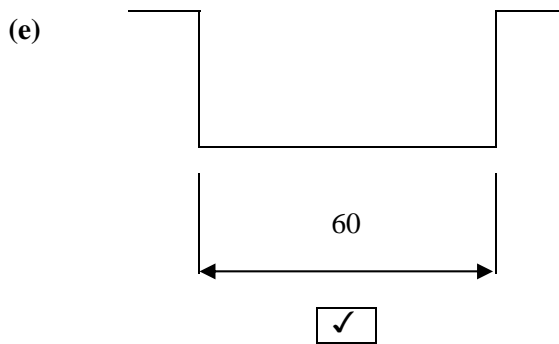
These Marking Instructions have been prepared by Examination Teams for use by SQA Appointed Markers when marking External Course Assessments. This publication must not be reproduced for commercial or trade purposes.

**2010 Graphic Communication SG Foundation  
Marking Instructions**

- 1 (a) Device: Keyboard
- (b) Device: Scanner
- (c) Device: Plotter/Printer
- (d) Device: Mouse/Keyboard
- (e) Device: Printer
- (f) Device: Modem
- (g) Device: Monitor

**TOTAL KI 7**

- 2 (a) Orthographic KI 1
- (b) P Continuous thick/Outline/Visible edge
- Q Hidden edge/Broken/Hidden Detail
- R Cutting plane
- S Chain/Centre
- T Hatching/Continuous thin KI 5
- (c) View A Section/Section XX/Sectional End Elevation KI 1
- (d) Angle 45° KI 1



KI 1

**TOTAL KI 9**

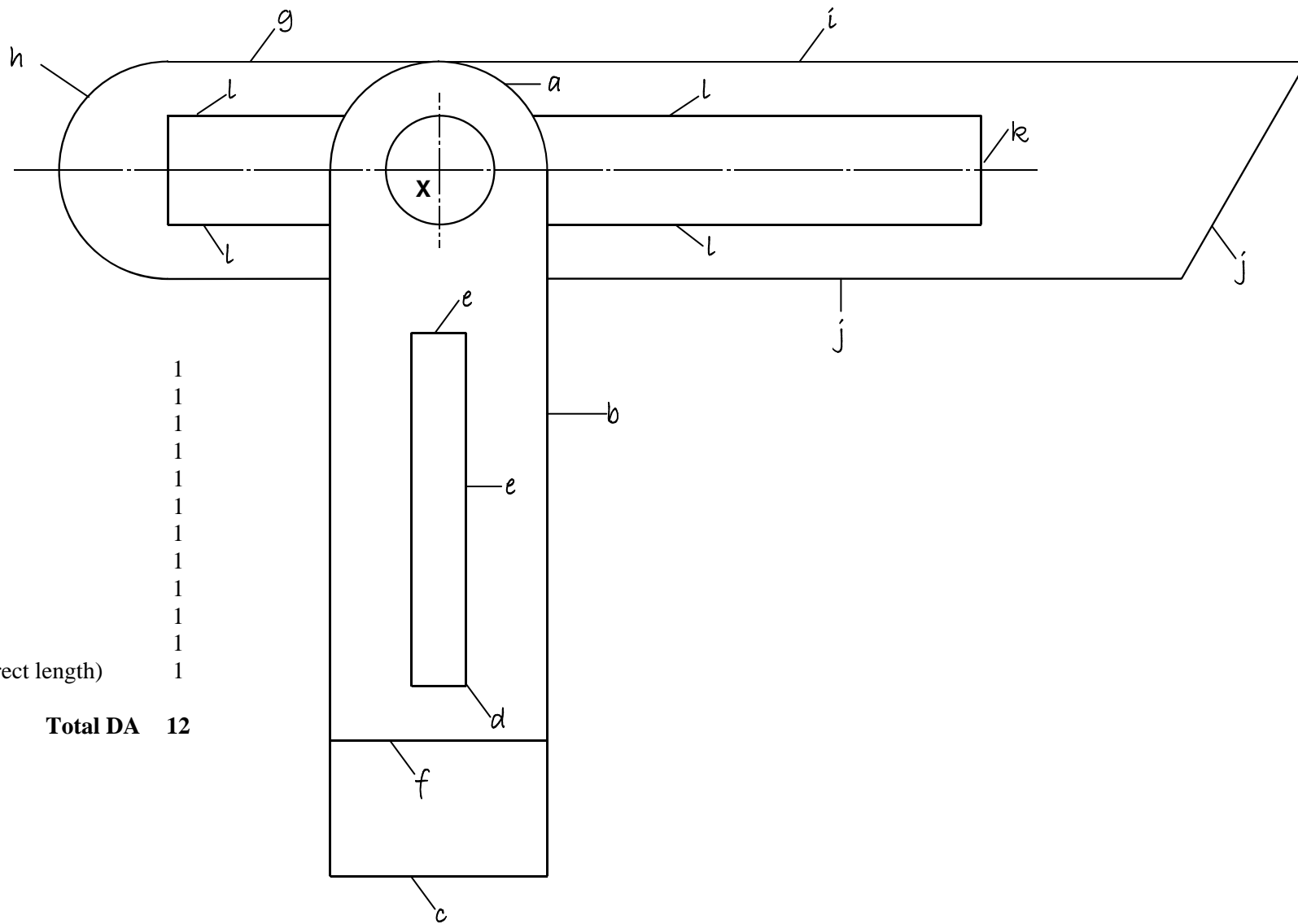
- 3 (a) Name: Bar Chart KI 1
- (b) Month: December KI 1
- (c) Number of months: 1/May KI 1
- (d) Month: December KI 1
- (e) Month: November KI 1
- (f) Number of months: 4/Jan, Feb, Aug, Sep KI 1

**TOTAL KI 6**

4

<b>Factors</b>	<b>Advantage</b>	<b>Disadvantage</b>
The speed with which a designer produces drawings.	✓	
The speed with which a designer can change mistakes.	✓	
The cost of buying new computers.		✓
The need to train staff in the use of computers.		✓
A library of commonly used parts.	✓	
Storage of drawings takes up less space.	✓	
Possible data loss.		✓
Greater accuracy of drawings.	✓	

**TOTAL KI 8**



**Question 5**

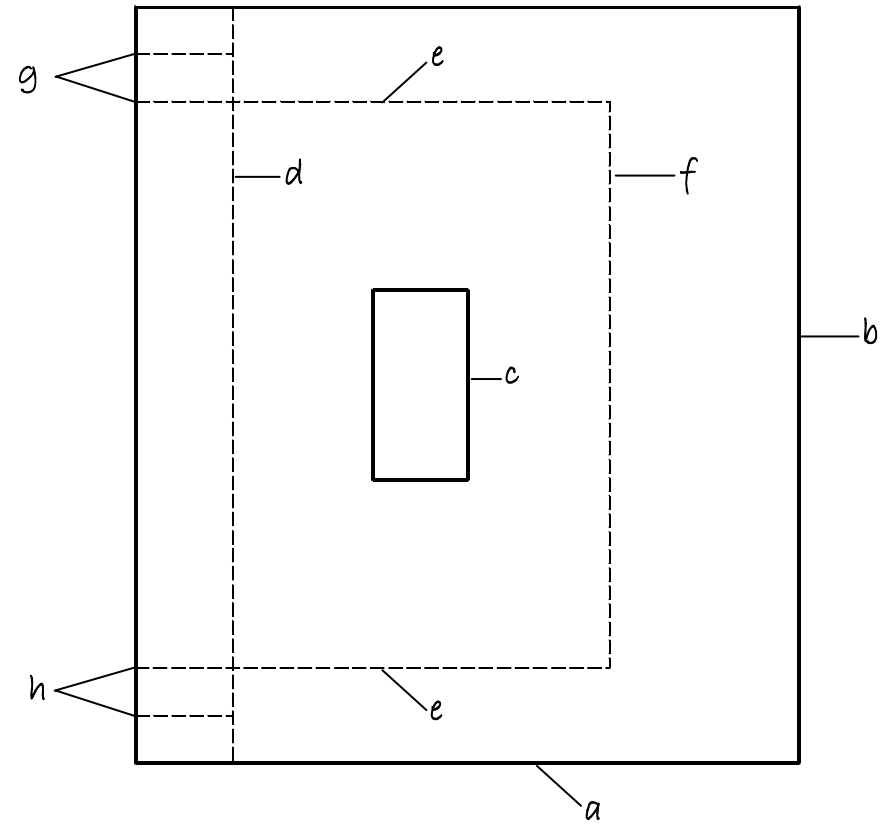
- |     |                                     |   |
|-----|-------------------------------------|---|
| (a) | Radius 20                           | 1 |
| (b) | Height 130                          | 1 |
| (c) | Length 40                           | 1 |
| (d) | Position correct of slot            | 1 |
| (e) | Height and width                    | 1 |
| (f) | Line height correct                 | 1 |
| (g) | Length 50                           | 1 |
| (h) | Radius 20                           | 1 |
| (i) | Length 160                          | 1 |
| (j) | Angle 60° + lines                   | 1 |
| (k) | Height                              | 1 |
| (l) | Lines (2 out of 4) (correct length) | 1 |

**Total DA 12**

**Question 6**

- (a) Length 70 1
- (b) Height 80 1
- (c) Length and height and position 1
- (d) Broken line 1
- (e) Broken lines (2 of) 1
- (f) Broken line 1
- (g) Broken lines 1
- (h) Broken lines 1

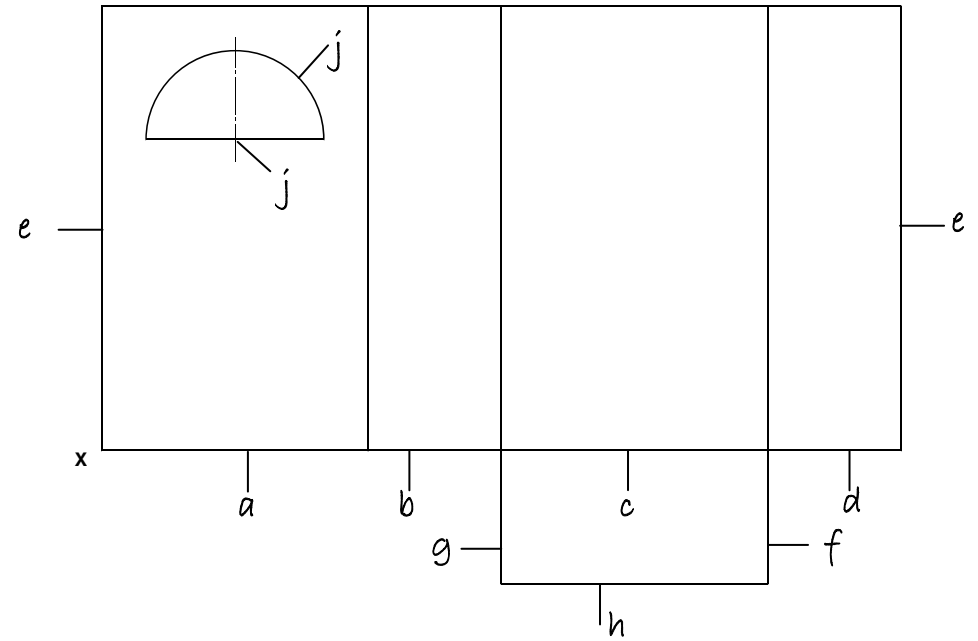
**Total DA 8**



### Question 7

- |     |                           |   |
|-----|---------------------------|---|
| (a) | Length ( $60 \pm 2$ )     | 1 |
| (b) | Length ( $30 \pm 2$ )     | 1 |
| (c) | Length ( $60 \pm 2$ )     | 1 |
| (d) | Length ( $30 \pm 2$ )     | 1 |
| (e) | Height 100                | 1 |
| (f) | Width (same as d)         | 1 |
| (g) | Width (same as b)         | 1 |
| (h) | Line                      | 1 |
| (i) | Position of centre        | 1 |
| (j) | Radius $20 + \text{line}$ | 1 |

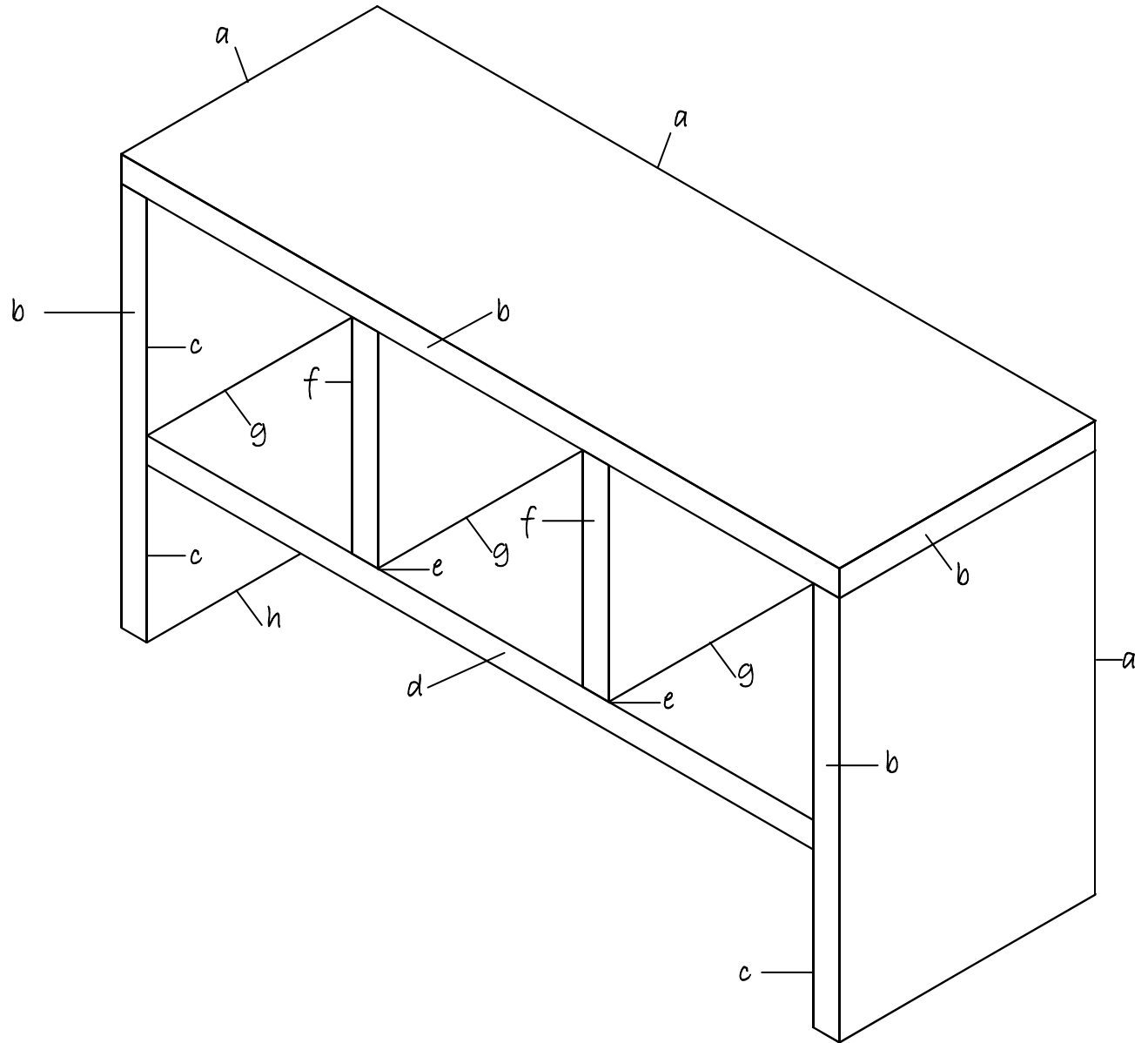
**Total DA 10**



**Question 8**

- |     |                              |   |
|-----|------------------------------|---|
| (a) | Crate $1 \times b \times h$  | 3 |
| (b) | Frame thickness (3 out of 4) | 1 |
| (c) | Height to shelf              | 1 |
| (d) | Shelf thickness              | 1 |
| (e) | Spacing (2 out of 3)         | 1 |
| (f) | Partition thickness          | 1 |
| (g) | Lines (all 3)                | 1 |
| (h) | Line                         | 1 |

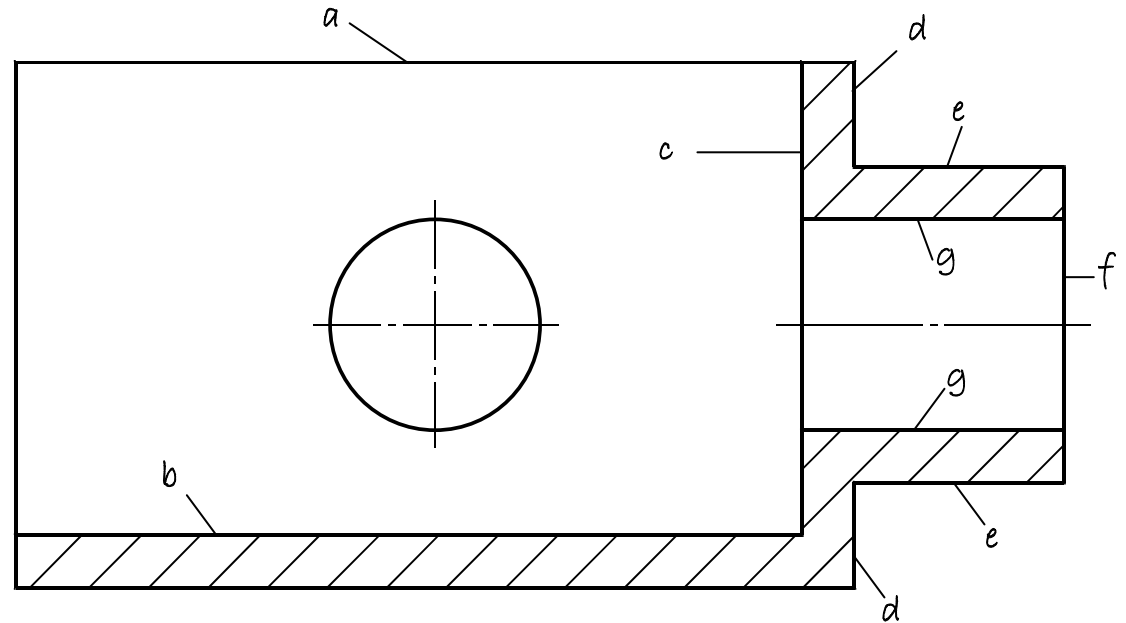
**Total DA 10**



**Question 9**

- |     |                                    |   |
|-----|------------------------------------|---|
| (a) | Width                              | 1 |
| (b) | Line width                         | 1 |
| (c) | Line height                        | 1 |
| (d) | Height 10 (1 only)                 | 1 |
| (e) | Lines width 20                     | 1 |
| (f) | Diameter 20 (FTE from (d))         | 1 |
| (g) | Lines (both)                       | 1 |
| (h) | Hatching lines shown (drawn @ 45°) | 1 |
| (i) | Correct area hatched               | 1 |
| (j) | Full lines shown (b, c, g)         | 1 |

**Total DA 10**



[END OF MARKING INSTRUCTIONS]